

HW UK Ltd
HAIRWORLD



Drew

Base	Monofilament Crown
Head size	Average
Hair length	1 ³ / ₄ - 5"
Fringe	2 ¹ / ₂ - 5"
Crown	2 ¹ / ₂ - 3 ³ / ₄ "
Side	1 ³ / ₄ - 2 ¹ / ₂ "
Nape	1 ³ / ₄ "
Weight	62 grams

Colours:
6H, 8H, 12AH, 12H, 14H, 18/22H,
24H18, 26H, 27AH,
Burnt Cinnamon,
Silver Pearl



Colour shown - 12H





Fern

Base	Monofilament Top Lace Front
Head size	Average
Hair length	2 ¹ / ₂ - 4 ¹ / ₂ "
Fringe	4"
Crown	4 ¹ / ₂ "
Side	3 ³ / ₄ "
Nape	2 ¹ / ₂ "
Weight	61 grams

Colours:

4H, 6H, 8H, 12AH, 12H, 14/24H,
16H, 26H, 27AH, 56,
Burnt Cinnamon,
Rich Coffee Bean,
Silver Pearl,
Toasted Pecan



Main Image Colour - Burnt Cinnamon
Secondary Image Colours - 16H & Burnt Cinnamon

Shona

Base	Monofilament Top Lace Front
Head size	Average
Hair length	2 - 5 ³ / ₄ "
Fringe	3 ³ / ₄ "
Crown	5 ³ / ₄ "
Side	3"
Nape	2"
Weight	64 grams

Colours:
4H, 6H, 8H, 12AH, 12H, 14/24H,
18/22H, 24H18, 26H, 27AH,
30H, 56,
Burnt Cinnamon,
Silver Pearl,
Toasted Pecan



Colour shown - 6H





Willow

Base	Monofilament Top Lace Front
Head size	Average
Hair length	5 - 11"
Fringe	7"
Crown	11"
Side	10"
Nape	8"
Weight	104 grams

Colours:
4H, 6H, 8H, 12AH, 12H, 14H,
24H18, 26H, 27AH,
Burnt Cinnamon,
Rich Coffee Bean,
Toasted Pecan



Main Image Colour - 27AH
Secondary Image Colours - 12H

Pippa

Base	Monofilament Top Lace Front
Head size	Average
Hair length	4 1/2 - 8 1/2"
Fringe	6 - 7 1/2"
Crown	8 1/2"
Side	7 1/2"
Nape	5"
Weight	98 grams

Colours:

4H, 6H, 8H, 12AH, 12H, 14H, 16H,
24H18, 26H, 27AH, 30H, 88H,
Burnt Cinnamon,
Rich Coffee Bean,
Toasted Pecan



Colour shown - 12AH





Ashley

Base	Double Layer Monofilament Top Lace Front
Head size	Average
Hair length	2 1/4 - 3 1/4"
Fringe	2 3/4"
Crown	3 1/4"
Side	2 3/4"
Nape	2 1/4"
Weight	52 grams

Colours:

4H, 12H, 14/24H, 16H, 18/22H,
24H18, 27AH, 38H, 54, 56, 88H,
Barley, Burnt Cinnamon,
Rich Coffee Bean,
Silver Pearl,
Toasted Pecan



Colour shown - Toasted Pecan

Anya

Base	Monofilament Top Lace Front
Head size	Average
Hair length	3 ³ / ₄ - 12 ¹ / ₄ "
Fringe	3 ³ / ₄ "
Crown	11 ³ / ₄ "
Side	12 ¹ / ₄ "
Nape	12 ¹ / ₄ "
Weight	150 grams

Colours:

1H, 1BH, 4H, 6H, 8H, 12AH, 12H,
24H18, 26H, 614H, 131H,
Barley, Burnt Cinnamon,
Butterscotch, Chocolate Flame,
Rich Coffee Bean, Toasted Pecan



Colour shown - 131H





Annabel

Base	Monofilament Parting
Head size	Average
Hair length	4 - 9"
Fringe	4"
Crown	9"
Side	7 ³ / ₄ "
Nape	6 ³ / ₄ "
Weight	64 grams

Colours:
4H, 12H, 88H,
Barley, Burnt Cinnamon,
Butterscotch, Chocolate Flame,
Rich Coffee Bean, Toasted Pecan



Colour shown - Chocolate Flame

Millie

Base	Monofilament Top Lace Front
Head size	Average
Hair length	4 - 8 1/2"
Fringe	7"
Crown	8 1/2"
Side	7"
Nape	4"
Weight	78 grams

Colours:
4H, 6H, 8H, 12H, 14H, 16H, 26H,
Burnt Cinnamon,
Rich Coffee Bean,
Toasted Pecan



Colour shown - 16H



Alex

Base	Monofilament Top
Head size	Average
Hair length	2 - 3 1/4"
Fringe	3"
Crown	3 1/4"
Side	3 1/4"
Nape	2"
Weight	55 grams

Colours:

4R, 8R, 8/26R, 8/27R, 12R,
12/26R, 16/22R, 18/22, 24R,
38R, 51, 54, 56, 60, 60R,
88R



Colour shown - 60

Brooke

Base	Monofilament Top
Head size	Average
Hair length	3 1/2" - 5 1/2"
Fringe	3 1/2"
Crown	5 1/2"
Side	5 1/4"
Nape	4"
Weight	56 grams

Colours:

4H, 6H, 8H, 12AH, 12H,
14/24, 16H, 27AH, 614H,
Barley, Burnt Cinnamon,
Butterscotch, Chocolate Flame,
Toasted Pecan



Colour shown - Chocolate Flame





Scarlett

Base	Monofilament Parting Lace Front
Head size	Average
Hair length	3 ¹ / ₄ - 7"
Fringe	4 - 7"
Crown	4 - 7"
Side	3 ¹ / ₄ - 5 ¹ / ₂ "
Nape	4 ¹ / ₂ "
Weight	78 grams

Colours:
4H, 8H, 12AH, 12H,
14H, 26H, 27AH,
Burnt Cinnamon,
Rich Coffee Bean,
Toasted Pecan



Colour shown - Toasted Pecan

Frankie

Base	Monofilament Top
Head size	Average
Hair length	3 - 3 ³ / ₄ "
Fringe	3"
Crown	4"
Side	3 ³ / ₄ "
Nape	3 ¹ / ₄ "
Weight	63 grams

Colours:

8/26R, 12R, 12/30BT,
12/26R, 16/22R, 26R,
38R, 54, 56, 60R



Colour shown - 12/30BT



Charlie

Base	Monofilament Top
Head size	Average
Hair length	2 ³ / ₄ - 10 ¹ / ₂ "
Fringe	4"
Crown	10 ¹ / ₂ "
Side	8 ¹ / ₂ "
Nape	2 ³ / ₄ "
Weight	89 grams

Colours:

4H, 6H, 8H, 12AH, 12H, 14H, 16H,
24H18, 26H, 27AH, 30H, 38, 56, 88H,
Barley, Burnt Cinnamon,
Butterscotch, Chocolate Flame,
Rich Coffee Bean, Silver Pearl,
Toasted Pecan



Colour shown - 24H18

Talliah

Base	Monofilament Parting
Head size	Average
Hair length	1 ³ / ₄ - 6"
Fringe	3 - 4"
Crown	3 ³ / ₄ - 6"
Side	4 - 5"
Nape	1 ³ / ₄ "
Weight	71 grams

Colours:
4H, 8H, 12AH, 12H,
14/24H, 26H, 27AH,
Burnt Cinnamon,
Rich Coffee Bean,
Toasted Pecan



Colour shown - Burnt Cinnamon





Faith

Base	Monofilament Parting
Head size	Average
Hair length	3 1/2" - 11"
Fringe	3 1/2"
Crown	9 1/2"
Side	11"
Nape	11"
Weight	135 grams

Colours:

1BH, 4H, 6H, 8H, 12H, 14H, 16H,
24H18, 27AH, 131H, 614H,
Barley, Burnt Cinnamon,
Butterscotch,
Chocolate Flame,
Toasted Pecan



Colour shown - 6H

Helen

Base	Double Layer Monofilament Top with hand tied back 1" Lace Front Hairline
Head size	Average
Hair length	2 ¹ / ₄ - 3 ³ / ₄ "
Fringe	3 ¹ / ₂ "
Crown	3 ¹ / ₂ "
Side	3 ³ / ₄ "
Nape	2 ¹ / ₄ "
Weight	57 grams

Colours:

101, 12, 12/26R, 14, 14/24,
24R, 38R, 56, 60/56, 60



Main Image Colour - 24R
Secondary Image Colour - 60





Roz

Base	Monofilament Top Lace Front	
Head size	Petite	
Hair length	3 1/4 - 5"	
Fringe	3 3/4"	Colours:
Crown	5"	4H, 6H, 8H, 12H, 14/24H, 26H,
Side	3 1/2"	Burnt Cinnamon,
Nape	3 1/4"	Rich Coffee Bean,
Weight	63 grams	Toasted Pecan, Silver Pearl



Colour shown - Rich Coffee Bean

Cleo

Base	Monofilament Top
Head size	Petite
Hair length	1 ³ / ₄ - 6 ¹ / ₄ "
Fringe	3 ³ / ₄ "
Crown	6 ¹ / ₄ "
Side	5"
Nape	1 ³ / ₄ "
Weight	65 grams

Colours:
4H, 8H, 12H, 16H, 26H,
Burnt Cinnamon,
Rich Coffee Bean,
Silver Pearl,
Toasted Pecan



Colour shown - 16H





Zara

Base	Monofilament Top
Head size	Petite
Hair length	2 1/2 - 3 1/2"
Fringe	2 1/2"
Crown	3 1/2"
Side	3"
Nape	2 1/2"
Weight	53 grams

Colours:

8R, 8/14R, 8/26R, 8/27R, 14,
16/22R, 18/22, 24R, 27, 38R,
48T, 51, 54, 56, 60R, 88R



Colour shown - 51

Kris

Base	Double Layer Monofilament Top Lace Front
Head size	Petite
Hair length	2 1/4" - 3 1/4"
Fringe	2 3/4"
Crown	3 1/4"
Side	2 3/4"
Nape	2 1/4"
Weight	52 grams

Colours:

4H, 12H, 14/24H, 16H, 18/22H,
24H18, 27AH, 38H, 54, 56, 88H,
Barley, Burnt Cinnamon,
Rich Coffee Bean, Silver Pearl,
Toasted Pecan



Colour shown - 12H





Macie

Base	Monofilament Parting
Head size	Petite
Hair length	3 ³ / ₄ - 10 ³ / ₄ "
Fringe	3 ³ / ₄ "
Crown	10 ³ / ₄ "
Side	9"
Nape	4"
Weight	106 grams

Colours:

4H, 6H, 8H, 12AH, 12H, 14H, 16H,
24H18, 26H, 27AH, 88H,
Barley, Burnt Cinnamon,
Butterscotch, Chocolate Flame,
Rich Coffee Bean, Toasted Pecan



Colour shown - 27AH

Kay

Base	Monofilament Top
Head size	Petite
Hair length	3 1/4 - 8 1/2"
Fringe	3 1/4"
Crown	8 1/2"
Side	7 1/2"
Nape	5"
Weight	91 grams

Colours:

4H, 6H, 8H, 14/24, 24H18, 26H,
Burnt Cinnamon,
Rich Coffee Bean,
Toasted Pecan



Colour shown - 26H





Keeley

Base	Wefted Lace Front	
Head size	Average	
Hair length	2 ¹ / ₄ - 8 ¹ / ₂ "	
Fringe	3 ¹ / ₂ - 5"	Colours:
Crown	4 ¹ / ₂ - 8 ¹ / ₂ "	4H, 8H, 12AH, 12H,
Side	6 - 7"	14H, 16H, 26H,
Nape	2 ¹ / ₄ "	Rich Coffee Bean,
Weight	76 grams	Silver Pearl,
		Toasted Pecan



Colour shown - Rich Coffee Bean

Tori

Base	Wefted Lace Front
Head size	Average
Hair length	1 1/4 - 5 1/4"
Fringe	3 - 5 1/4"
Crown	4"
Side	1 1/4 - 2 3/4"
Nape	1 1/4 - 2 1/4"
Weight	68 grams

Colours:
4H, 12H, 14H, 16H,
26H, 27AH, 60H,
Burnt Cinnamon,
Rich Coffee Bean,
Toasted Pecan



Colour shown - Rich Coffee Bean





Stephanie

Base	Wefted
Head size	Average
Hair length	2 ³ / ₄ - 3"
Fringe	3"
Crown	3"
Side	3"
Nape	2 ³ / ₄ "
Weight	57 grams

Colours:

4H, 6H, 24H18, 27AH, 56, 88H
Barley, Burnt Cinnamon,
Chocolate Flame,
Rich Coffee Bean,
Toasted Pecan



Colour shown - 6H

Eve

Base	Wefted
Head size	Average
Hair length	2 - 3"
Fringe	3"
Crown	3"
Side	3"
Nape	2"
Weight	63 grams

Colours:
8/27R, 12/26R, 17/101,
18/22, 22R, 24R, 38,
38R, 54, 56, 60R,
88R, 101, 102



Colour shown - 24R





Ella

Base	Wefted
Head size	Average
Hair length	2 ¹ / ₄ - 3 ¹ / ₄ "
Fringe	2 ³ / ₄ "
Crown	3 ¹ / ₄ "
Side	2 ³ / ₄ "
Nape	2 ¹ / ₄ "
Weight	56 grams

Colours:
4H, 6H, 8H, 12AH, 12H,
14/24H, 18/22H, 24H18,
26H, 27AH, 38H, 56,
60H, 88H



Colour shown - 88H

Jamie

Base	Wefted
Head size	Average
Hair length	2 ¹ / ₄ - 3 ¹ / ₂ "
Fringe	2 ³ / ₄ "
Crown	3 ¹ / ₂ "
Side	3 ¹ / ₄ "
Nape	2 ¹ / ₄ "
Weight	50 grams

Colours:
8/14R, 8/27R, 12/26R,
16/22R, 18/22, 24R,
38R, 48, 56, 60,
60R, 88R



Colour shown - 16/22R





Emily

Base	Wefted
Head size	Petite
Hair length	2 1/2 - 3"
Fringe	2 1/2"
Crown	3"
Side	3"
Nape	3"
Weight	64 grams

Colours:

10, 12, 14/24H, 16, 17/101,
18/22H, 38, 39, 48, 51, 54,
56, 60/56, 60, 101



Colour shown - 14/24H

Abbie

Base	Wefted
Head size	Petite
Hair length	1 1/4 - 3 1/4"
Fringe	3 1/4"
Crown	3 1/2"
Side	3 1/4"
Nape	1 1/4"
Weight	55 grams

Colours:

8/26R, 12/26R, 14, 14/24,
16/22R, 17/101, 18/22,
22R, 24R, 32, 34, 38R,
39, 51, 54, 56,
60, 88R, 101



Colour shown - 12/26R





Alana

100% Human Hair

Base Monofilament Top
Head size Average
Hair length 2 1/2 - 7"
Weight 83 grams

Colours:
2H, 3H, 4H, 5H, 7H, 9H, 20H



Main Image Colour - 7H
Secondary Image Colour - 3H

Sienna

100% Human Hair

Base Monofilament Top
Head size Small / Average
Hair length 16"
Weight 205 grams

Colours:
2H, 3H, 4H, 5H, 7H, 9H, 20H,
7H Ombre



Colour shown - 7H



Skye

100% Human Hair

Base	Monofilament Top	
Head size	Average	
Hair length	7 - 10 ¹ / ₂ "	Colours:
Weight	117 grams	2H, 3H, 4H, 5H, 7H, 9H



Colour shown - 3H

Accessories



Polystyrene Styling Head

Used for dressing out and styling wigs.
Height 28cm

Code: AC0232



Styling Brush

Silicone tips to prevent damage to the fibres.
Length 16cm

Order code: AC0500

Wig Tape

Medical quality daily wear wig tape.

Code: ACT25 - 25mm x 25mt

Code: ACT5 - 25mm x 5mt



Collapsible Drying Stand

Allows natural drying of your wig and its base material without stretching. Extra strong rigid frame with a unique top grip section that holds the wig, preventing slipping while allowing natural drying of synthetic wigs.

Extra tall height for longer styles and folds flat in seconds for easy transport and storage.
Height 36cm

Code: AC023T

Synthetic Wig Care Pack

- 1 x REFRESH shampoo 250ml
- 1 x REVIVE conditioning spray 250ml
- 1 x CONTROL shape spray 250ml
- 1 x Medi caps in twin pack (beige)
- 1 x Styling brush
- 1 x Collapsible wig stand

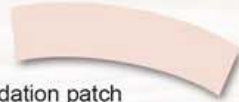
Code: AC0031



Poly Patch

Polyurethane foundation patch use on wigs for use of double sided tape.

Code: AC0172



UV Shine Spray

Help protect against harmful UV damage when sprayed sparingly and also add luster and shine.
100ml

Code: WG/SHI



Medi Cap

Increases wig comfort, security and hygiene.

Made from 100% polyester.

Code: AC022BE: Beige (Twin pack)

Code: AC022BL: Black (Single cap)



Snappy Clips

Wig to hair attachment clips.



2.5cm for fine hair
Code: AC017BR



2.5cm with silicone tips for normal hair
Code: AC017BRS



3cm with rubber band for thicker density hair
Code: AC018BRW



3cm with silicone tips & rubber band for normal hair
Code: AC018BRS



3.5cm with silicone tips & rubber band for normal hair
Code: AC0201BR



Bamboo Wig Liner

Our Bamboo wig liner provides a soft comfortable feel between the wig base and your scalp and because it is 95% bamboo it will help alleviate skin irritation, keeping your scalp cool and dry.

Made from -
95% Bamboo / 5% Lycra.
Colour: Beige

Code: AC022BA

Synthetic Fringe



These easily attached fringes are the ideal accessory for turbans and scarves. They provide an added dimension to your headwear by creating a natural hair appearance.

They are attached with Velcro and are available in a wide range of colours.

The fringe is approximately 4" long and can be trimmed if required to the desired length.

Synthetic Fringe Colours



Headwear Brochure

Showing just a few styles from our headwear collection, many more Hats, Scarves, Turbans, Bandanas, Wraps and Sleep caps to choose from and all produced in many exciting colours.

Sorrento Hat

This stretchy ruched fabric looks amazing and offers a secure and comfortable fit.

Made from a Bamboo material which is a naturally breathable material with a touch of lycra which gives a luxurious soft feel.

Hat shown - Turquoise
Order Code: AC0066TU



Amalfi Scarf

This permanently tied scarf is attached to a soft Bamboo band and provides an elegant look with some truly beautiful colours and mixes.

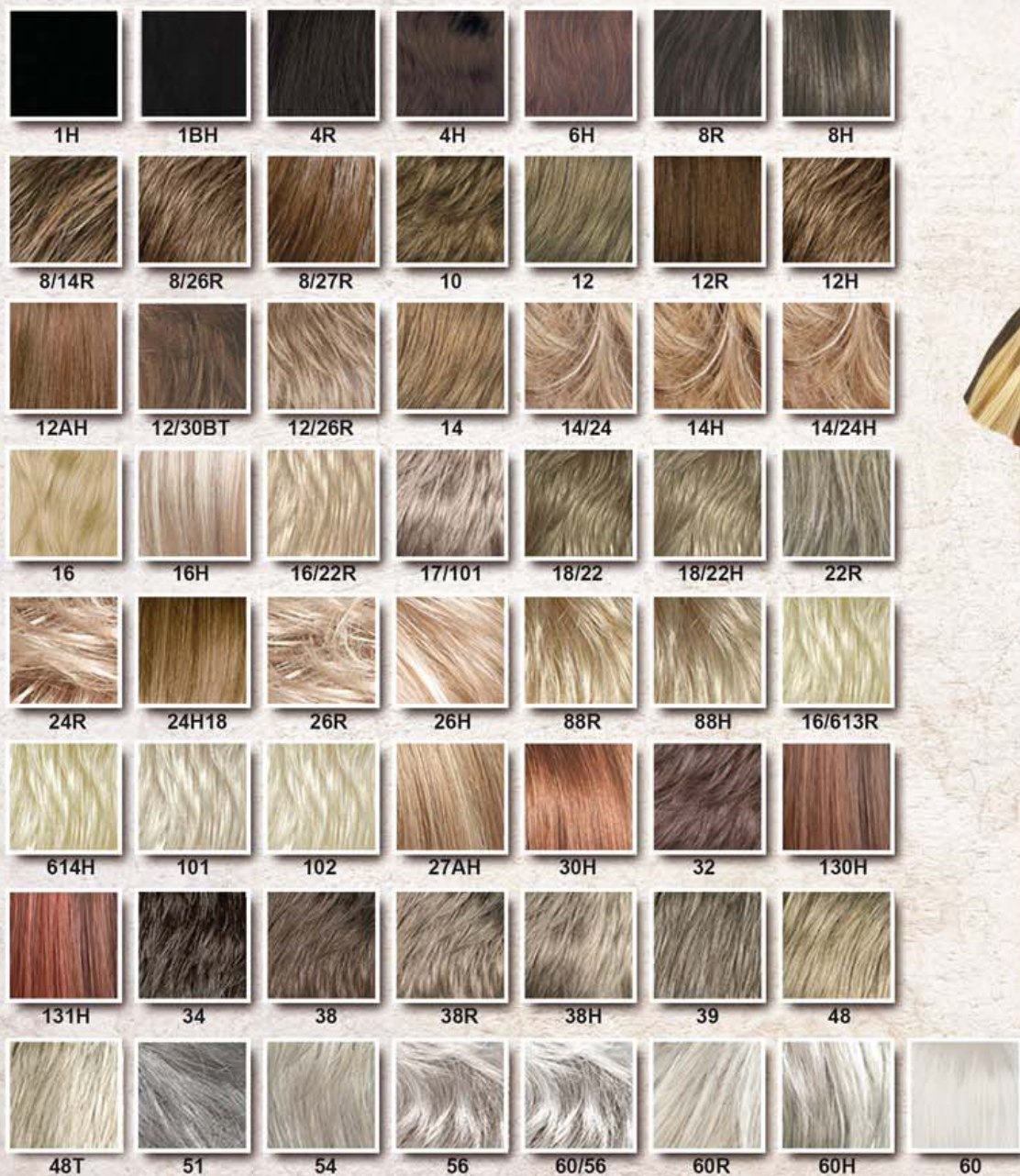
Scarf shown - Order Code: AC00801



Headwear brochure

Order Code: AC026

Synthetic Wig Colours



Synthetic Tri-Light Colours



Human Hair Colours



Colour rings available

Synthetic colour ring - Code: AC0074

Human hair colour ring - Code: AC0052

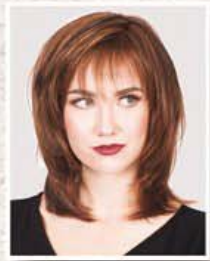




Abbie page 32



Alex page 11



Annabel page 9



Anya page 8



Ashley page 7



Brooke page 12



Charlie page 15



Cleo page 20



Drew page 2



Ella page 29



Emily page 31



Eve page 28



Faith page 17



Fern page 3



Frankie page 14



Helen page 18



Jamie page 30



Kay page 24



Keeley page 25



Kris page 22



Macie page 23



Millie page 10



Pippa page 6



Roz page 19



Scarlett page 13



Shona page 4



Stephanie page 27



Talliah page 16



Tori page 26



Willow page 5



Zara page 21



Alana page 33



Sienna page 34



Skye page 35

