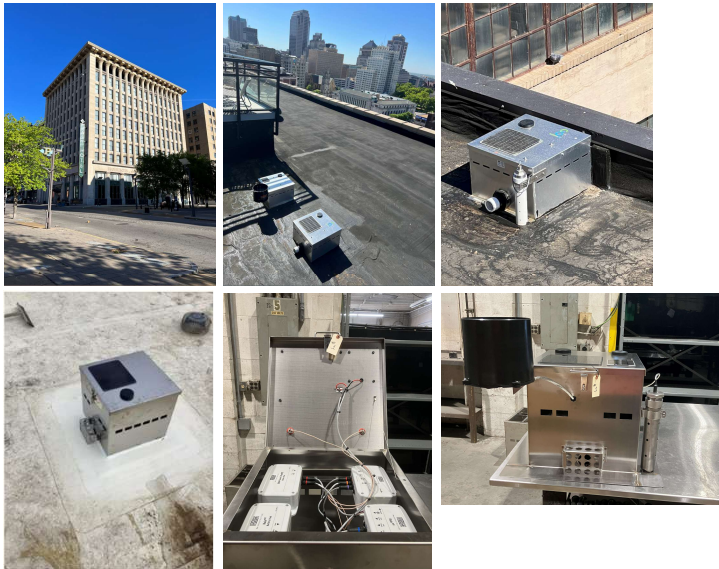


Rooftop Flow Control (RFC)

Digitalization Kits for Real-Time Control & Rainfall Monitoring for Rooftop Detention Systems

Component Images



Application & Value

- Rooftop Detention Systems (Blue Roofs)
- P4 Partnership with Sustainablu
- Rooftop Runoff Control
- User-Defined Detention Period
- Real-Time Control (RTC) of Roof Discharge
- Autonomous Operation
- Manual Over-Ride Operation Possible
- Rooftop Detention Time Documented
- Stormwater Volume Detained Documented
- Rainfall Demand Documented

Wireless (cellular) Data Transmission

- Cat-M1 cellular (2G, 3G, 4G LTE compatible)

Power

- No External Power Required
- Integrated Kits are Battery Powered / Solar Re-Charged (5,000 mAh NIMH)
- Rainfall Monitoring Battery/Solar
- Flow-Control Valves Battery/Solar
- Water-Level Monitoring Battery/Solar

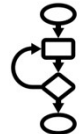
Exposure Allowance, Compliance, and Leak Detection

- FCC and RoHS
- Computer & Battery Enclosures – IP67
- Integral Cellular Antenna in IP67 Enclosure
- Operating Temperatures:
 - Fahrenheit: -30 to 120 deg F
 - Celsius: -34 to 49 deg C
- P4 Leak Detection System (LDS) Option

Features



Nationwide cellular connectivity (Wi-Fi Option)



Real-Time Control (RTC) algorithms facilitate autonomous operation. Remote manual over-ride allow user-controlled remote operation.



Browser-based dashboard (viewing and data download). Advanced notice of potential problems. Data visualization. Data-driven maintenance notification.



Rooftop valve and control system and data can compliment other ground-based systems (synchronized data)

Maintenance (low to zero)

- Modular Plug-and-Play Remote Health Assessment of Battery via Dashboard
- Visual Inspection of Solar Panel (bi-annual)
- Visual Inspection of Valves (bi-annual)