

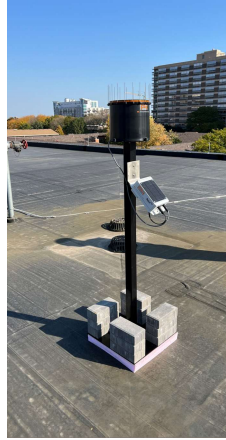
Rain-mX

Rainfall Measurement & Environmental Conditions

Images



Existing Pole Mounting



Stand-Alone Rooftop Mount

Wireless (cellular) Data Transmission

- Cat-M1 cellular (2G, 3G, 4G LTE compatible)

Power (Stand-Alone, NO External Power Source)

Rain-mX Computer and Sensor Power Supply:

- Voltage – 12 VDC
- Battery Pack with Solar-Panel Recharge

Mounting Options

Option 1:

- Stainless Steel Mounting Bracket
- Band-Clamp Mount to Existing Pole Structure

Option 2:

- Stand Alone Rooftop (flat roof) Mounting Pole
- Ballast for Base
- 1-1/2" Rigid Insulation Base

Exposure Allowance & Compliance

- FCC and RoHS
- Computer, Battery Pack, and TPH Sensor Enclosures are all IP67 rated
- Integral Cellular Antenna in IP67 Enclosure

Specifications & Sensors

Data Sampling and Resolution

- 10-minute data sampling (continuous)
- 0.01" resolution - rainfall

Data Aggregation & Usage

- 12-Hr
- 24-Hr
- 7-day
- Event Definitions Possible
- Correlation to ATLAS-14 (15) IDF Curves

8" Diameter Tipping Bucket Rain Gauge (with crown)

Temperature, Barometric Pressure, and Relative Humidity Sensor

Features



Nationwide cellular connectivity (WiFi possible – contact P4)



Environmental conditions:

- rainfall
- relative humidity
- barometric pressure
- temperature



Browser-based dashboard (viewing and data download). Advanced notice of potential problems. Data visualization. Data-driven maintenance notification.



Environmental condition monitoring to complement other sensor systems (curated data stream)

Maintenance (low to zero)

- Modular Plug-and-Play (sensor, computer, battery, solar panel)
- Remote Health Assessment of Battery via Dashboard
- Visual Sensor inspection (annual recommended)