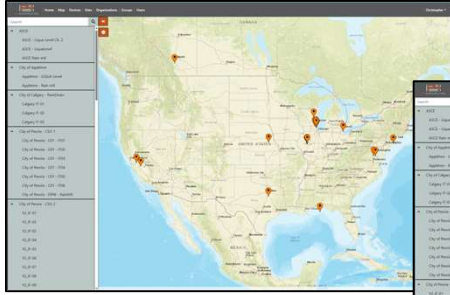


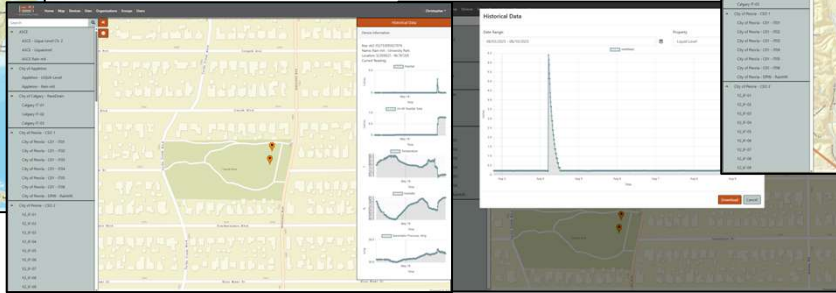
P4 Cloud-Compute Platform

Browser-Based Data Viewing, Download & Reporting for Performance Assessment

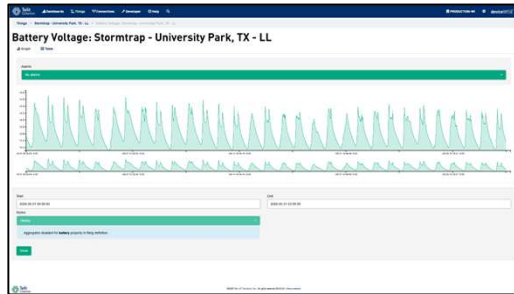
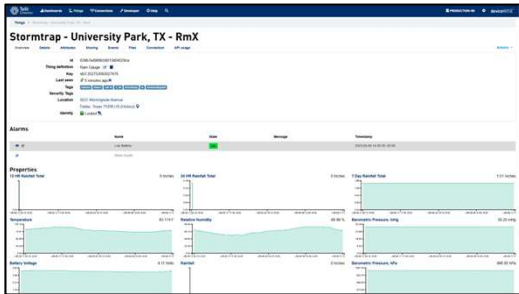
Quick Data Viewing & Download



User-Credentialed Map-Centric Access for Quick Viewing and Assessment and Download of Data. Three-Day View and Date Bookend Download (CSV format).

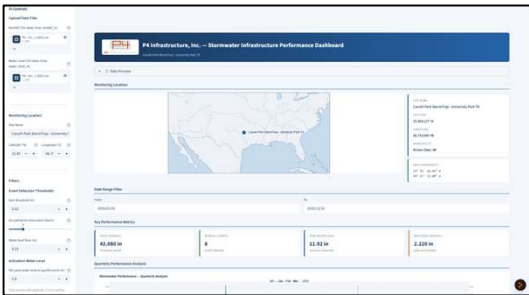


Detailed Data Viewing, Data Download & Remote Battery Health Monitoring



User-Credentialed Access for Detailed viewing Assessment and Download of Data.
Date Bookend Download (CSV format).
Remote Viewing of System Battery Health and Solar-Panel Recharge Cycles

Performance Data Synthesis & Reporting

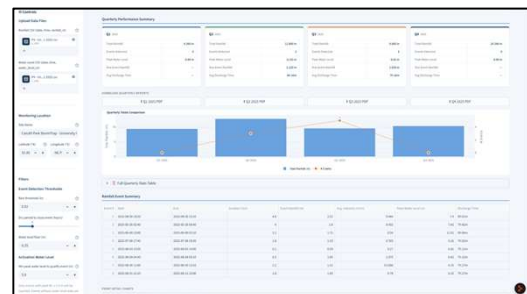


Data Performance Assessment Dashboard.

Data Synthesis with User Control Parameters.

Long-Term Data Synthesis.

PDF Reporting



P4 Infrastructure, Inc.

Stormwater Infrastructure Performance Report
 Caruth Park StormTrap - University Park TX
 Generated June 09, 2024 16:08

Site & Analysis Information

Field	Value
Monitoring Site	Caruth Park StormTrap - University Park TX
Monitoring Station	StormTrap - University Park TX
Latitude	32.85027° N
Longitude	96.79194° W
Analysis Start	January 01, 2024 00:00
Analysis End	December 31, 2023 23:59
Event Definition	Peak readings > 0.02 in. Event < 0 consecutive hrs > 0.02 in.
Activation HL Threshold	Peak water level reach > 0.0 in. qualify as an event.
Discharge Standard	You have peak water level and peak volume < 0.20 in. flow.
Water Level Floor	Readings > 0.20 in. treated as 0.00 in.

Hourly Event Details

#	Start	End	Run Time	Event Duration (min)	Avg. Intensity (in/hr)	Peak W. (in)	Discharge (cfs)
1	06:00 12/01	06:00 12/01	4.5	2.22	0.447	7.4	76.00
2	06:00 02/01	06:00 02/01	4.5	1.8	0.432	7.42	76.40
3	06:00 23/01	06:00 23/01	3.2	1.71	0.54	11.00	96.00
4	07:00 19/01	07:00 19/01	1.8	1.53	0.762	13.40	76.00
5	06:00 15/02	06:00 15/02	0.2	0.09	0.27	6.42	76.00
6	06:00 04/02	06:00 04/02	0.8	1.06	1.075	6.42	76.00
7	06:00 11/01	06:00 11/01	2.2	1.27	0.886	6.16	76.00
8	06:00 31/10	06:00 31/10	1.8	1.42	0.78	6.16	76.00

Engineering Observations / Notes