

BALL BEARING RUB COLLARS

NUMBER	BORE	DIAM.
AM-90-026	3/4"	1-5/8"
AM-90-027	3/4"	1-11/16"
AM-90-028	3/4"	1-3/4"
AM-90-032	3/4"	2"
AM-90-033	3/4"	2-1/16"
AM-90-035	3/4"	2-3/16"
AM-90-036	3/4"	2-1/4"
AM-90-039	3/4"	2-7/16"
AM-90-040	3/4"	2-1/2"
AM-90-047	3/4"	2-15/16"
AM-90-048	3/4"	3"

NUMBER	BORE	DIAM.
AP-90-036	1-1/4"	2-1/4"
AP-90-040	1-1/4"	2-1/2"
AP-90-044	1-1/4"	2-3/4"
AP-90-048	1-1/4"	3"
AP-90-049	1-1/4"	3-1/16"
AP-90-052	1-1/4"	3-1/4"
AP-90-056	1-1/4"	3-1/2"
AP-90-060	1-1/4"	3-3/4"
AP-90-064	1-1/4"	4"
AP-90-066	1-1/4"	4-1/8"
AP-90-068	1-1/4"	4-1/4"
AP-90-072	1-1/4"	4-1/2"



RUB SPACERS FOR COPE & PATTERN

A M 50-803
A P 10-803

1/4" x 3/8"
tongue

A M 50-801
A P 10-801

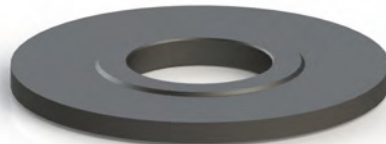
1/4" x 1/2"
tongue

A M 50-806
A P 10-806

5.5 x 3/8"
tongue

A M 50-807
A P 10-807

5.5 x 1/2"
tongue



Optional rub spacer available for M-50 and P-10 series cope & pattern sets. Replaces center cutter on cope side.

T-BUSHINGS

Choose from

- **Long Style** - for 3 to 6 Cutter Sets. Consists of 1 long and 1 short T-Bushing.
- **Short Style** - for Single Cutters. Consists of 2 short T-Bushings.
- **Double Sided** - to run between Cutter and Bearing.

Long Style

NUMBER	I.D.	O.D.
AM-91-008	1/2"	3/4"
AX-91-012	3/4"	1"
AP-91-012	3/4"	1-1/4"
AP-91-016	1"	1-1/4"
AP-91-016 XL*	1"	1-1/4"
AP-91-017	30mm	1-1/4"
AP-91-018	1-1/8"	1-1/4"
AP-91-024	1-1/4"	1-1/2"
AP-91-025	1-1/4"	40mm
AP-91-029	1-1/4"	1-13/16"

Short Style

NUMBER	I.D.	O.D.
AM-92-008	1/2"	3/4"
AX-92-012	3/4"	1"
AP-92-008	1/2"	1-1/4"
AP-92-012	3/4"	1-1/4"
AP-92-016	1"	1-1/4"
AP-92-017	30mm	1-1/4"
AP-92-018	1-1/8"	1-1/4"
AP-92-024	1-1/4"	1-1/2"
AP-92-025	1-1/4"	40mm
AP-92-029	1-1/4"	1-13/16"

Double Sided

NUMBER	I.D.	O.D.
AM-93-008	1/2"	3/4"
AX-93-008	1/2"	1"
AX-93-012	3/4"	1"
AP-93-012	3/4"	1-1/4"
AP-93-016	1"	1-1/4"
AP-93-018	1-1/8"	1-1/4"
AP-93-024	1-1/4"	1-1/2"
AP-93-025	1-1/4"	40mm
AP-93-029	1-1/4"	1-13/16"

SPACERS AND SHIMS

Spacers

NUMBER	BORE	WIDTH
AM-94-001	3/4"	1/16"
AM-94-002	3/4"	1/8"
AM-94-003	3/4"	3/16"
AM-94-004	3/4"	1/4"
AM-94-005	3/4"	5/16"
AM-94-006	3/4"	3/8"
AM-94-007	3/4"	7/16"
AM-94-008	3/4"	1/2"
AM-94-009	3/4"	9/16"
AM-94-010	3/4"	5/8"
AM-94-012	3/4"	3/4"
AM-94-016	3/4"	1"
AP-94-001	1-1/4"	1/16"
AP-94-002	1-1/4"	1/8"
AP-94-003	1-1/4"	3/16"
AP-94-004	1-1/4"	1/4"
AP-94-005	1-1/4"	5/16"
AP-94-006	1-1/4"	3/8"
AP-94-007	1-1/4"	7/16"
AP-94-008	1-1/4"	1/2"
AP-94-009	1-1/4"	9/16"
AP-94-010	1-1/4"	5/8"
AP-94-012	1-1/4"	3/4"
AP-94-016	1-1/4"	1"

Spacers - Used in a wide range of woodworking applications.

Shims - Sets of 48 color-coded plastic shims for various spacing needs.

Shims

NUMBER	BORE	QTY.	COLOR	THICKNESS	QTY.	COLOR	THICKNESS
AM-95-008	1/2"	6	Green	.003"	6	Black	.0125
AP-95-016	1"	6	Matte	.0075"	6	Yellow	.020
AP-95-018	1-1/8"	6	Brown	.010"	6	Coral	.030

Shims - Sets of 20 metal shims in five thicknesses.

Metal Shims

NUMBER	BORE	QTY.	THICKNESS
AM-95-012-M	3/4"	4	.003"
AP-95-020-M	1-1/4"	4	.005"
		4	.010"
		4	.015"
		4	.020"