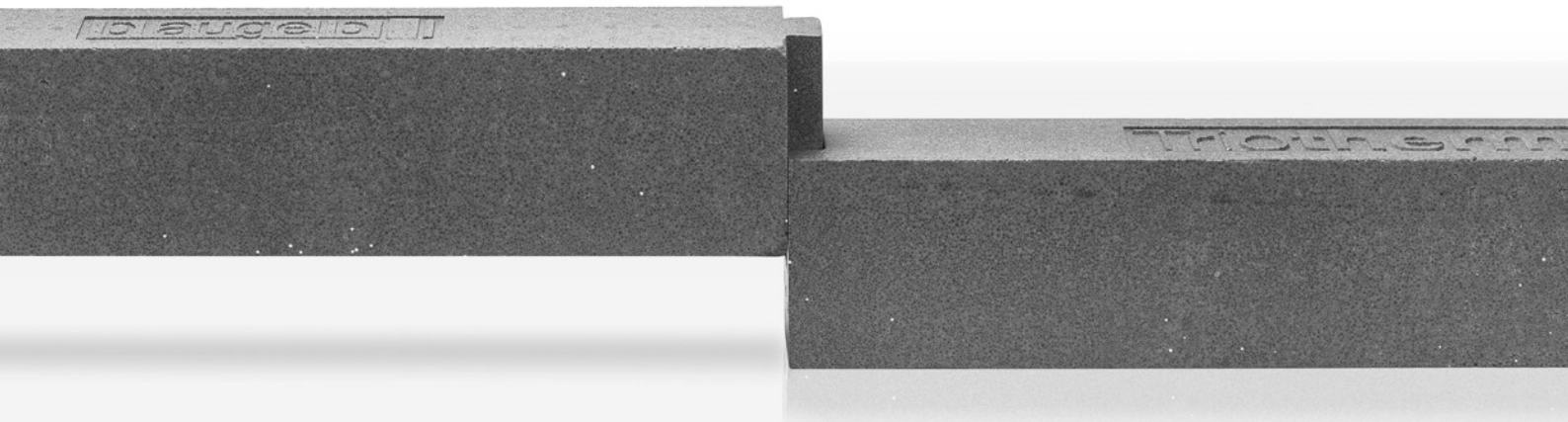




The blaugelb Trio**therm**<sup>+</sup> profiles are part of the Trio**therm**<sup>+</sup> overall system for building element installation in the insulating layer of façades. They transfer all loads arising reliably and without distortion, and systematically apply them to the load-bearing structure. The blaugelb Trio**therm**<sup>+</sup> profiles allow efficient sealing of window connection joints in accordance with the applicable regulations.



## blaugelb Trio**therm**<sup>+</sup> profiles

The Trio**therm**<sup>+</sup> profile – part of the blaugelb Trio**therm**<sup>+</sup> system.

- **100 % recyclable, 100 % free of HCFCs, HFCs and HBCDs**
- **This product is Cradle to Cradle Certified® at the Silver level**
- **High-density (expanded) polystyrene**
- **High ductility**
- **Infinitely extensible by dovetailing**
- **Enables sustainable construction thanks to reversibility of window sealing and fastening when renovating**
- **System component of the tested pre-wall installation system blaugelb Trio**therm**<sup>+</sup>**

## Area of application:

A major area of application of the blaugelb Triotherm<sup>+</sup> profiles is for extending the masonry jamb in the insulation layer of the façade, as the load-bearing, dimensionally stable installation surface for the assembly parts to be fitted. The blaugelb Triotherm<sup>+</sup> profiles can introduce the resulting forces reliably into the load-bearing structure via the mechanical fastening. The permanently dimensionally stable blaugelb Triotherm<sup>+</sup> profiles always form a level plane for the regulation-compliant sealing of connecting joints between construction elements.

blaugelb Triotherm<sup>+</sup> profiles made from a high-density EPS (expanded polystyrene) are one of the three system components of the blaugelb Triotherm<sup>+</sup> system. The robust, hard-wearing profiles exhibit load-bearing capacity, can be fitted to the load-bearing structure quickly and easily, and offer thermally isolated load transfer – thermal bridges from the structurally necessary fastening of construction elements are reduced to a minimum. The blaugelb Triotherm<sup>+</sup> profiles can be integrated perfectly into the insulating zones of all façade systems.

The waste-free joining of the blaugelb Triotherm<sup>+</sup> profiles brings clear advantages for the fitter by virtue of the extruded, positive-locking dovetail design. Thanks to their low weight and compact dimensions, the blaugelb Triotherm<sup>+</sup> profiles are unbeatably quick and straightforward to process.

Expert sealing and mechanical fastening of the blaugelb Triotherm<sup>+</sup> profiles to the load-bearing base is necessary, but takes only a few minutes. For more detailed information on installation, please consult the installation instructions at [www.blaugelb.de](http://www.blaugelb.de)

## Product benefits:

- Stable dimensions and volume
- Insensitive to moisture, non-ageing
- 100 % recyclable, 100 % free of HCFCs and HFCs
- HBCD (hexabromocyclododecane)-free
- High-density (expanded) polystyrene
- High ductility
- Thanks to 100 % reversibility of window fastening for renovation, makes a major contribution to sustainable building
- Time savings thanks to few working steps and swift combination with the system components
- Profiles are easy to machine/saw with a jigsaw or mitre saw (coarse longitudinal-cut blade)
- Can be cut to shape precisely and with minimal dust
- Infinitely extensible by dovetailing
  - Very good fit of the dovetail joint
  - High level of joint stability
  - Waste-free processing
- Profiles exhibit a very low weight and compact dimensions
  - Advantage for transporting to/on construction site
  - Advantage for handling
- Window frames can be screwed on without pre-drilling of the blaugelb Triotherm<sup>+</sup> profiles
- Waffle structure increases the adhesion of the seal between the base and the blaugelb Triotherm<sup>+</sup> profiles

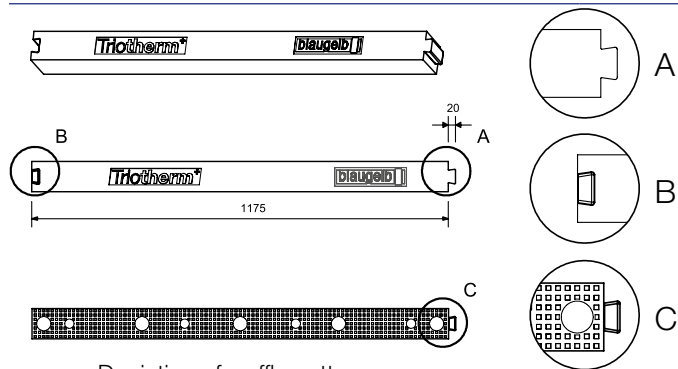
- Production process constantly maintains very high dimensional accuracy and geometrical accuracy of the blaugelb Triotherm<sup>+</sup> profiles
  - Always straight
  - Always level sealing flanks
- High inherent stability and flexural strength, high ductility
- Airtight, connection between profile and base is verified by technical tests
- Absorption of high building tolerances flush with windows is verified by technical tests
- Reduces thermal bridges in the mounting plane of the assembly parts
- Tested to be low in pollutants according to EMICODE EC1 Plus
- This product is Cradle to Cradle Certified® at the Silver level

## Technical data:

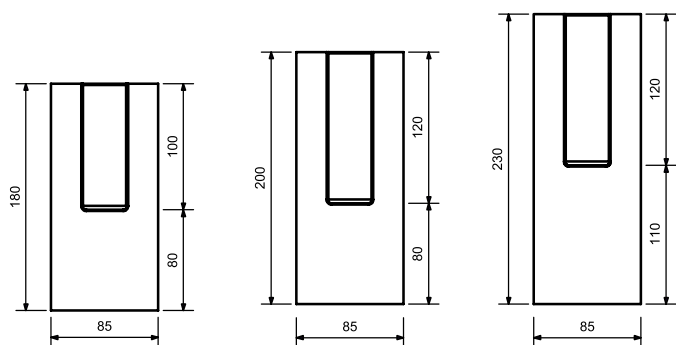
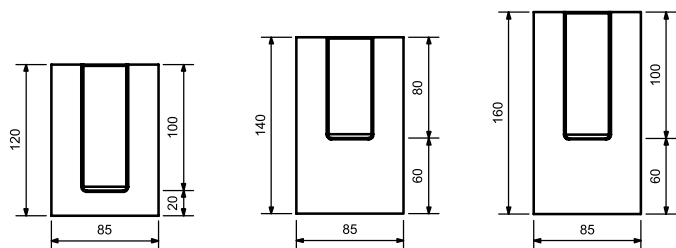
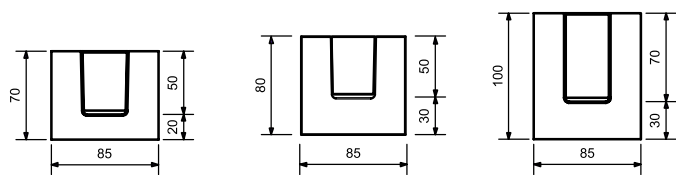
Material:	High-density EPS (expanded polystyrene), high ductility
Colour:	Grey
Compressive load bearing capacity at max. total deformation of 2 %:	1,260 kg/dm <sup>2</sup>
Compressive load bearing capacity at 60 x 40 mm: (blaugelb Spacer Block)	5,800 N
Compressive load bearing capacity at 210 x 53 mm: (blaugelb Shim Block HST)	15,510 N
Fire behaviour: <b>DIN 4102-1:1998-05 / DIN EN 13501-1:2019-05</b>	B2 / Class E
Thermal conductivity nominal value $\lambda_{10}$ : <b>DIN EN 12667:2001-05</b>	0.0375 W/m*K
Air permeability: <b>EN 12207</b>	Class 4
Water vapour diffusion resistance: <b>DIN EN ISO 12086</b>	228 $\mu$
Bending strength: <b>DIN EN 12089</b>	$\geq 2,490$ kPa
Compression stress (2 %) compression: <b>DIN EN 13163:2017 / EN 826:2013-05</b>	$\geq 1,435$ kPa
Shear strength: <b>DIN EN ISO 14130</b>	0.217 N/mm <sup>2</sup>
Screw withdrawal value: (Frame screw Fix FK-T30 7.5 x 62 mm)	2,100 N
Water absorption after 28 days under water: <b>DIN 12087</b>	$\leq 0.5$ vol. %
Compatibility with conventional building materials:	Compatible, except for solvents, solvent-bearing materials and materials that are not polystyrene-compatible
Ageing resistance:	Mould-proof, does not rot
Waste code:	Code no. 170604 Code no. 170904

Product name	PU	Item no.
blaugelb Triotherm <sup>+</sup> profile 70x85x1175 mm	Bundle of 9 pcs.	0420838
blaugelb Triotherm <sup>+</sup> profile 80x85x1175 mm	Bundle of 9 pcs.	9216354
blaugelb Triotherm <sup>+</sup> profile 100x85x1175 mm	Bundle of 6 pcs.	0425988
blaugelb Triotherm <sup>+</sup> profile 120x85x1175 mm	Bundle of 6 pcs.	0420839
blaugelb Triotherm <sup>+</sup> profile 140x85x1175 mm	Bundle of 6 pcs.	9035238
blaugelb Triotherm <sup>+</sup> profile 160x85x1175 mm	Bundle of 6 pcs.	0420840
blaugelb Triotherm <sup>+</sup> profile 180x85x1175 mm	Bundle of 3 pcs.	9035239
blaugelb Triotherm <sup>+</sup> profile 200x85x1175 mm	Bundle of 3 pcs.	9021633

**Product name** blaugelb Triotherm<sup>+</sup> profile 230x85x1175 mm  
**PU** Bundle of 2 pcs.  
**Item no.** 9021632



Depiction of waffle pattern



**Delivery and storage form:**

Store in its original packaging. Current packaging: Use of a PE stretch film dyed white, UV-stable for 6 months made of POLYETHYLENE FS 340-03 and LL 118 BLEND.

**Service**

Instruction on the expert, system-compliant use of the blaugelb Triotherm<sup>+</sup> installation system can be provided by our specialist advisors (info@blaugelb.de).

**Disposal:**

According to Waste Catalogue Ordinance:  
Code no. 170604 (single-grade insulating material EPS)  
Code no. 170904 (mixed construction waste)

**Safety note:**

According to the available specifications and guidelines, the product is not a hazardous substance.