

爱默生电梯（上海）有限公司
EMERSON ELEVATOR (SH) CO.,LTD.

地址：上海市奉贤区奉城镇奉旺路1313号
Add: No. 1313 Fengwang Road, Fengcheng Town, Fengxian District, Shanghai
电话（Tel）：+86 021-67170666
传真（Fax）：+86 021-67171166
E-Mail: sale@emerson-elevator.com
http://www.emerson-elevator.com



**ESCALATOR
MOVING WALK**

自动扶梯/人行道

本书为一般信息类出版物，我们保留随时更改产品设计和说明的权利。
本书的任何字句，无论其字面意思或含义，对于任何产品及该产品的用途和质量，或者任何购销合同条文的表述与更改均不承担任何责任。
This publication is for general informational purposes and we reserve the right at any time to alter product design and specification.
No statement it contains should be construed as a warranty or condition, express or implied, as to any product, its fitness for any particular purpose or quality, or any modifications or representation of the terms of any purchase agreement.

2022年10月

爱默生电梯（上海）有限公司
EMERSON ELEVATOR (SH) CO.,LTD.

PROCEED THROUGH THE CROWD AND DISCOVER THE ELEGANCE

行进在熙攘之间 优雅于足下突显

科技与生活
工业与城市
在极速前进的社会中
爱默生自动扶梯/人行道
搭载着川流不息的人群
也搭载着人们对美好的向往



TECHNOLOGY NEVER ENDS AND WE KEEP MOVING

科技永不止步
我们不断向上



爱默生自动扶梯将国内外先进技术相融合，不断地追求工艺上的进步与细节上的完美。同时将安全性、实用性、耐用性和视觉的美感完美融为一体，为人们出行带来更为舒适便捷的体验。

EMERSON escalator has integrated with domestic and foreign advanced technologies to constantly pursue the improvement in technique and perfect in detail. Meanwhile it combines the safety, practicability, durability and visual aesthetics to bring more comfortable and convenient experience for people.



安全性
Safety

稳健可靠 安全为重

采用微机控制系统，具备一系列扩展功能，既能保证电梯持续高效平稳的运行，又能在出现突发状况时迅速作出应对。
扶梯各个部位都设有相应的安全保护装置，足以应对高密度人流量的运载需求，避免可能出现的问题。
从生产、安装到后期维护，在每一个环节上都对质量严格把控，最大程度的保护客户利益。

Stable and reliable, it is safety-oriented

Secured by Control System of Microcomputer, it is equipped with a series of extended functions, not only ensuring the continuous highly-efficient and stable operation of the escalator, but also able to rapidly respond to emergency situations.
Each part of the escalator has been equipped with corresponding safety protection devices, which is sufficient to satisfy the carrying demand of the high-density population to avoid possible problems.
From the production, installation to post-maintenance, it has been strictly kept control of the quality in each link to protect customers' benefits to the maximum extent.



耐用性
Durability

经久耐用 性能优良

采用国内外最先进的制造工艺，大桁架设计，刚性和防扭曲性达到国际水平。
内外盖板采用高质量的不锈钢，前沿板以高耐磨钢压制，整体采用矩形方管结构，具有强大的负载能力。
提升了整机的使用周期，减少客户的运营成本，为客户带来了便利。

It is durable in use and favorable in performance

Adopting the most advanced domestic and foreign manufacturing techniques, it is designed in large truss. The rigidity and anti-distortion can reach international level.
As to internal and external cover plates, it adopts high-quality stainless steel. The front edge plate is pressed by highly wear-resistant steel. It adopts rectangle square tube in structure overall to ensure strong carrying capacity.
It has upgraded the overall service life which can reduce the operation cost and bring more conveniences for clients.

灵活配置 广泛适用

自动扶梯采用短踏板设计，大大减少了空间上的跨度，整机结构更为紧凑简洁，能适应不同建筑格局的需求。
不论是超市还是车站，亦或是其他地方，都能针对建筑特点，对产品配件进行灵活配置，打造更合理、舒适的乘梯环境。

The flexible configuration can be extensively applied

Designed in short pedal, the escalator can largely reduce the space span. The whole structure becomes more sight and simple to adapt to the demand of different architectural structures.
No matter in supermarkets, stations or other places, the product accessories can be flexibly adjusted to build more reasonable and comfortable escalator environment.

美观自然 贴心设计

自动扶梯采用流线型设计，整体自然大气。设计美观时尚，扶梯与周围建筑环境融为一体，相辅相成。
扶手带、围裙等都有多种款式可供选择，最大程度地满足客户的审美需求，确保每一件产品都是一件独一无二的作品。

It is natural and artistic with comfortable designs

The escalator adopts streamlined design, making it natural in appearance. Beautiful and fashion, the escalator can be well integrated in the surrounding architectural environment. There are multiple choices for the hand strap and apron to satisfy the aesthetic demand for clients to the maximum extent and ensure every product is unique.

TECHNOLOGY LEADS LIFE AND WE KEEP GOING

技术引领生活，我们一路向前

爱默生自动人行道，使用人性化的设计，将先进的工艺技术融入到产品的方方面面中去，为各类公共空间提供完美的大客流运输解决方案。在城市公共空间之中，为人们出行提供便利。

EMERSON moving walk adopts humanized design, introducing advanced techniques into aspects of the product to provide perfect large passenger flow solutions for various public spaces. In urban public spaces, it can provide conveniences for people.

牢固安全 稳定耐用

高精度的金属桁架结构，紧凑、牢固、安全，具备强大的运载能力。

工艺先进，坚持细节，保证了产品从生产到使用的每一个环节的质量。

It is safe, stable and durable

The highly-precise metal truss structure makes it tight, secure and safe with strong carrying capacity.

With advanced techniques, it insists on details to make sure the product quality in each link from production to application.

It is environmental protective with energy-saving operation

It can choose variable frequency driving technology optional to effectively avoid interferences from other factors and further improve the energy-saving effect and reduce the operation cost to the maximum extent.

It adopts bevel gear driving device and horizontal handrail driving to reduce the frictional loss in operation and power consumption.

绿色环保 节能运行

可选配变频驱动技术，有效规避其他因素的干扰，进一步提升节能效果，最大程度地降低运行成本。

采用斜齿轮驱动装置和平行式扶手驱动，降低运行中的摩擦损耗，减少电耗。

人性设计 舒适体验

针对不同环境，选配不同配件，最大程度的改善用户体验。人性化的设计，满足了客户各个方面的需求，给使用者带来舒适、平稳的使用感受。

The humanized design provides comfortable experiences

In different environments, it can be allocated with different accessories to improve user experience to the maximum extent.

The humanized design can satisfy the different demands for clients to bring comfortable and stable user experience.

设计美观 灵活多样

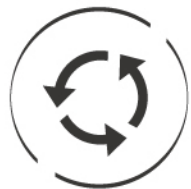
自动人行道采用鱼腹梁式的短踏板结构，减少空间跨度，更灵活地运用于城市建筑当中。在质量之外，兼顾外观上的美感。

扶手带、护壁板等可选配不同颜色材质，满足了不同的审美要求。

The design is artistic, flexible and diverse

The moving walk is designed in fish-belly sill short pedal to reduce the space span. It can be more flexibly applied in urban architectures.

It has also considered the external aesthetics except the quality. There are multiple different colors and materials for the hand strap and retaining wall to satisfy different aesthetic demands.



节能
Energy conservation



耐用
Durable

S.F. EXPRESS SAILING WITH THE WIND SAFE AND STEADY PACE

顺风顺水，平步于安全与稳健

秉持一贯严谨的设计理念，爱默生自动扶梯/自动人行道，以“安全”品质为企业立足之本，在细节上充分考虑到乘客需要，带给人们一个更和谐、更安全的乘行环境。

It adheres to the persistently rigorous design ideas. EMERSON escalator / moving walk regard safe quality as the existing foundation of the enterprise. It fully considers the passengers' requirements in every detail. It provides the people with a more secure and harmonious travel environment.

围裙板刷

在围裙板和梯级之间装有刷子使乘客的鞋子不会碰到围裙板。

Skirt panel brush

The brush that has been installed between the skirt panel and the step will prevent the shoes of passengers from touching the skirt panel.

梯级照明

扶梯上下端，梯级下部装有照明以提醒乘客注意安全。

Step illumination

Illumination exists in the upper and lower ends of the escalator, in the lower part of the step in order to remind the passengers of the security matters.

紧急停止按钮

当按下该按钮时，自动扶梯（自动人行道）将停止运行。

Emergency stop button

When the button has been pressed down, the escalator (moving walk) will be stopped for running.

紧急制动装置

当电力不足或任一安全装置动作时，制动装置将通过弹簧弹力作用使制动功能生效，使自动扶梯（自动人行道）停止运行。

Emergency brake device

When the electric force falls short of supply or it acts any of the safety device, the brake function goes into effect by the safety device through the spring resilience action, the escalator (moving walk) stopped for running accordingly.

驱动链断裂保护

当驱动链被过度拉伸或断裂时，自动扶梯（自动人行道）将自动停止运行。

Drive-chain breaking protection

When the drive-chain has been over-stretched or it is broken, the escalator (moving walk) will automatically stop for running.

梯级（踏板）下陷保护装置

当发现梯级有异常的弯曲时，自动扶梯（自动人行道）会在梯级进入梳齿板前停止运行。

Step (tread) sunk protection device

When there is abnormal step bending, the escalator(moving walk) will be stopped for running before the step entering into the comb plate.

梯级测速装置

如果扶手带速度比梯级慢于一定百分比，自动扶梯（自动人行道）将停止运行。

Step speed detector

When the handrail speed versus step is slower than certain percentage, the escalator (moving walk) will be stopped for running.

梯级链断裂保护装置

当梯级链被过度拉伸或断裂时，自动扶梯（自动人行道）将自动停止运行。

Step-chain breaking protector

When the step-chain has been over-stretched or it is broken, the escalator (moving walk) will be automatically stopped for running.

BASIC FUNCTION

基本功能



扶手入口

新颖别致、富有现代时尚感的流线型扶手带出入口设计，赋予扶梯更多的灵活性和亲和力，蕴含对用户的细心体察。尽显灵活、圆润、顺畅的美感，又可彰显周围建筑的典雅与尊贵。

Handrail inlet

The escalator is richly endowed with the intelligence and popularity by the novel, distinctive, elegant, tensile and modernized streamline handrail inlet and outlet design model. It appears to be more beautiful in the outer appearance. It displays the nobleness and imposing manner of the conveying constructions.



自动加油

PLC控制自动加油润滑系统，实现了在扶梯运行过程中给传动链理想的自动润滑，不仅减轻了日常维保工作量，而且可以延长传动机构的使用寿命。

Automatic oiling

PLC control automatic oiling and lubricating system fulfills the ideal automatic lubrication to the transmission chain during the running process of the escalator. It not only reduces the daily repair and maintenance work load, but also prolongs the service life of the driving mechanism.



故障显示器

当有故障发生时，故障代码就会显示在故障屏幕上，确保在最短的时间内，准确的判断故障部位，大大提高了维修保养效率。

Fault display

When it happens to have an accident, the trouble code will be shown in the screen of the trouble to ensure the accurate judgment of the trouble position within the shortest time possible so as to greatly enhance the repair and maintenance efficiency.



围裙照明

沿着梯级运行轨迹流线型的围裙板照明光线，在运行时不仅维持了光束的美观大方，同时又强调了扶梯在整幢大楼中的可见度并使乘客的乘坐更加舒适和安全。

Skirt panel illumination

The streamline skirt panel lighting along the step running track not only keeps the elegant and pleasing beam of light during the operational process, but also emphasizes the sound degree of visibility to the escalator in the whole building. It brings about the more cozy and secure riding for vast passengers.

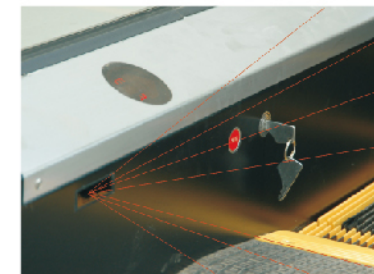


斜扶手

采用不锈钢封闭式斜扶手扶梯，适合于人流量大，承载重，用于公共交通运输的场所。能最大程度的扩展乘梯空间，更有效提高乘客乘梯的安全系数。

Inclined handrail

It adopts the stainless steel enclosed and inclined handrail escalator. It is fit for the occasions with the large stream of people, heavy loading. It is also applicable for the public traffic and transport places. It can extend the riding space to the greatest extent and increase the safety coefficient of the passengers in traveling the lifts.



自动启动/停止

位于楼层板附近的红外线传感器可以检测到进入楼层板的乘客，并自动开始运行，当所有乘客离开后会自动停止运行，以节约能耗。有扫描传感器和传统的导向杆方式可供选择。

Automatic start / stop

The infrared ray sensor which is near the floor plate can detect the passenger that enter into the floor plate. Then it will automatically start the operation. After all the passengers leave, it will automatically stop the operation again in order to save the energy loss. Scanning sensor and traditional guide rod are available for your choice.

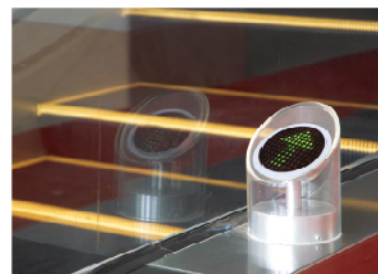


滚轮内置梯级链（常规结构用）

滚轮内置于专门设计的滚轴梯级链，能有效实现降低驱动运行时的噪音，使运行更加平稳和宁静。

Step Chain-roller inbuilt (for conventional structures)

The roller has been internally installed in the specially-designed roller step chain. It can effectively fulfill the reduction of the noise during the driving process and bring about a more smooth and quiet operation.

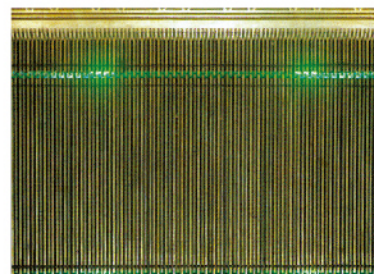


运行方向指示

运行方向和禁行显示标识置于扶手带出入口处，以显示运行或禁行指示，确保乘客安全自如地乘坐。

Running direction indication

The running direction and forbidden display mark have been placed in the inlet and outlet of the handrail to show the lift travel or forbidden instructions which ensure the safe travel of the passengers with great ease.

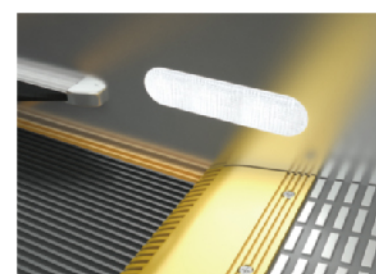


梯级警界灯

绿色荧光灯安装在口部和下部梯级踏板下，当两连接的梯级运行错开时，绿色荧光便从梯级的齿口中照出，以帮助乘客识别梯级进出水平段，提高乘梯安全。

Demarcation lamp

The green fluorescent lamp has been installed under the upper and lower step tread. When there is the staggering running of two connecting steps, the green fluorescent light will be sent out from the step teeth in order to help the passengers identify the step inlet and outlet horizontal section and enhance the riding safety.

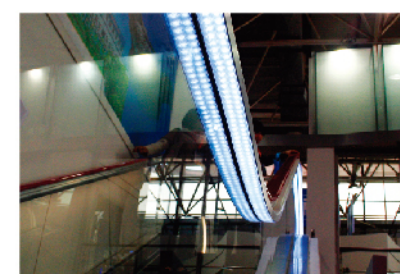


梳齿照明

照明被安装在靠近梳齿板旁的围裙板上，为梯级和梳齿板提供照明以方便乘客安全的乘坐自动扶梯。

Comb illumination

The illumination has been installed in the skirt panel near the comb plate. It offers the lighting for the step and the comb plate. It is more convenient for the passengers to up and down the escalator.

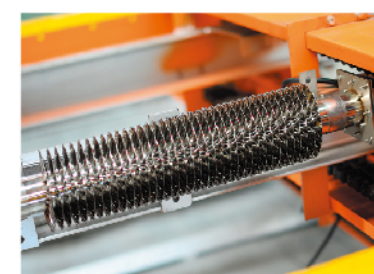


扶手照明

扶手照明安装在扶手支架内，柔和的光线为运行中的自动扶梯增添了几份灵气。

Handrail illumination

The handrail illumination has been installed in the handrail frame. The gentle light adds charm to the running escalator.



加热装置

在三个部位，上部安装在上机房主机边，主要对上部机房进行加热，中部安装在扶梯中部，下部安装在下机房，主要对整个梯路进行加热。

Heating device

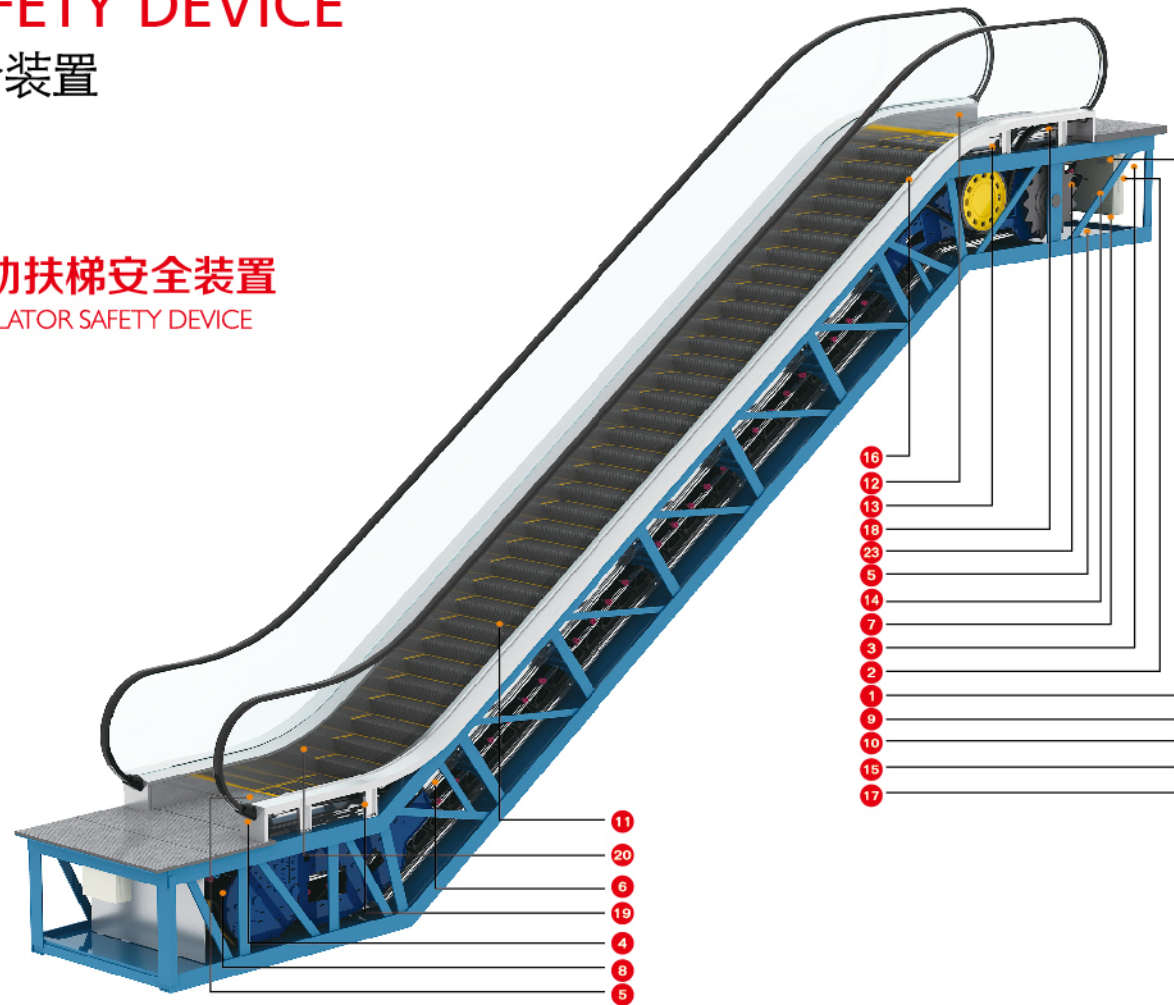
In three sections, one is beside the host in the upper machine room. It mainly heats the upper machine room. The second is installed in the mid escalator. And the third is in the lower part. It mainly heats the whole escalator.

SAFETY DEVICE

安全装置

自动扶梯安全装置

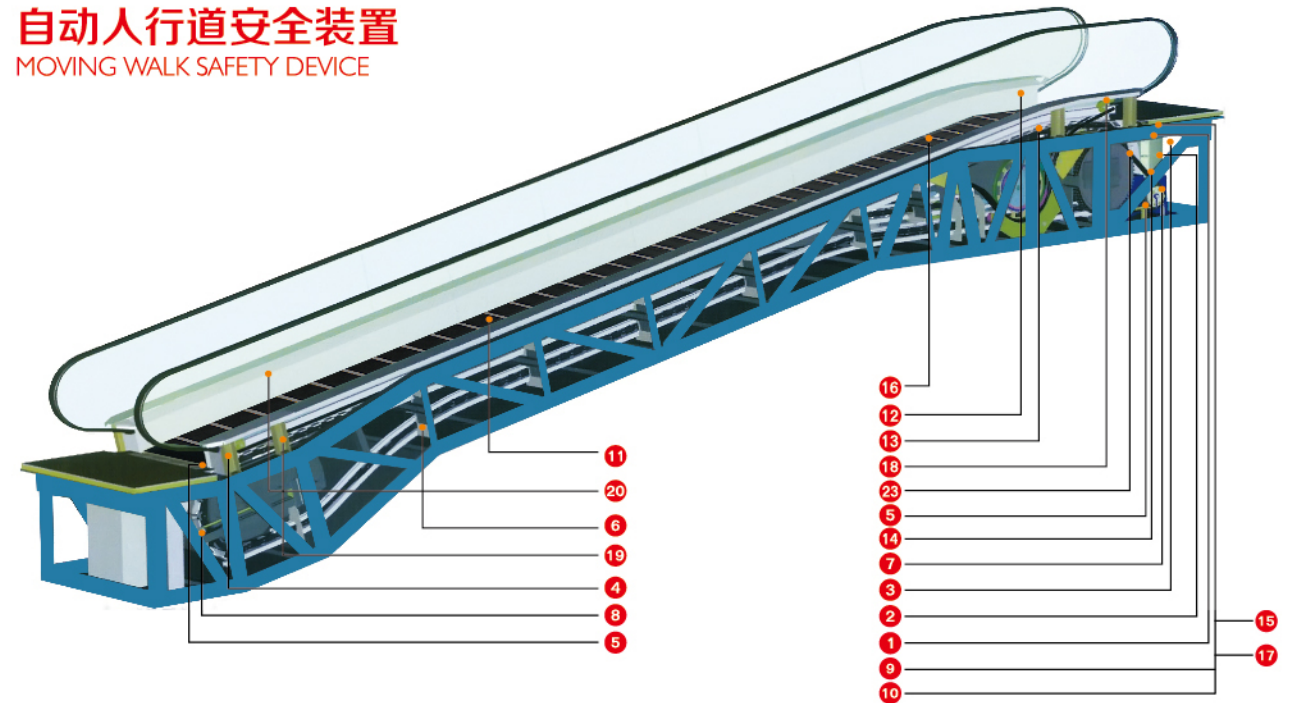
ESCALATOR SAFETY DEVICE



标准安全装置 Standard safety device	说明 Description
1.缺相、错相保护 Lack of phase, error phase protection	如果发生缺相或错相，自动扶梯（自动人行道）将自动停止。 If lack of phase or error phase has been checked out, the escalator (auto-walk) will automatically stop the operation.
2.马达超载保护 Motor over-load protection	电流超过额定电流的15%则扶梯自动停止运行。 When the current exceeds 15% of the current rating, the escalator will automatically stop the operation.
3.电气回路保护 Electrical appliance loop protection	提供自动电路断开装置以保护自动扶梯（自动人行道）的电路和电源部件。 It offers the automatic circuit disconnecting device to protect the circuit and mains components of the escalator (auto-walk).
4.扶手带入口保护 Handrail inlet protection	当外物夹在扶手带入口处时，自动扶梯（自动人行道）会自动停止。 When some foreign substance has been clipped in the handrail inlet, the escalator (auto-walk) will automatically stop the operation.
5.梳齿板安全保护装置 Comb plate safety device	当外物夹入梳齿板时，自动扶梯（自动人行道）将自动停止运行。 When some foreign substance has been clipped in or between the combs, the escalator (auto-walk) will automatically stop the operation.
6.梯级塌陷保护装置 Step sagging protection device	当发现梯级有异常的弯曲时，自动扶梯（自动人行道）会在梯级进入梳齿板前停止运行。 When there is abnormal step bending, the escalator (auto-walk) will stop the operation before the step entering into the comb plate.
7.驱动链断裂保护 Broken drive-chain safety device	当驱动链被过度拉伸或断裂时，自动扶梯（自动人行道）将自动停止运行。 When the drive-chain has been over-stretched or it is broken, the escalator (auto-walk) will automatically stop the operation.
8.梯级链断裂保护 Broken step chain protection	当梯级（板）链过度拉伸或断裂时，自动扶梯（自动人行道）将会自动停止运行。 When the step (pallet) chain has been over-stretched or it is broken, the escalator (auto-walk) will automatically stop the operation.
9.超速保护 Over-speed protection	当自动扶梯（自动人行道）超速，将自动停止运行。 When there is over-speed to the escalator (auto-walk), it will automatically stop the operation.
10.非操作逆转保护 Direction reversal protection	当逆转操作而违反了预定的运行方向，自动扶梯（自动人行道）将自动停止运行。 When it comes the unintentional reversal of the direction of travel, the escalator (auto-walk) will automatically stop the operation.
11.警戒线 Security line	黄色合成树脂警戒线位于自动扶梯梯级的前部或两侧，以防止乘客踏入相邻梯级的边缘和围裙版之间，在梯级两边的警戒线高于踏板的面。 The yellow synthetic resin security line is located in the front position and two sides of the escalator tread so that the passengers will not tread in-between the edge of the adjacent step and the lift group lengthened skirt panel. The security line on both sides of the step is higher than the tread surface.
12.紧急停止按钮 Emergency stop button	当按下该按钮时，自动扶梯（自动人行道）将停止运行。 When the button has been pressed down, the escalator (auto-walk) will stop the operation.

自动人行道安全装置

MOVING WALK SAFETY DEVICE

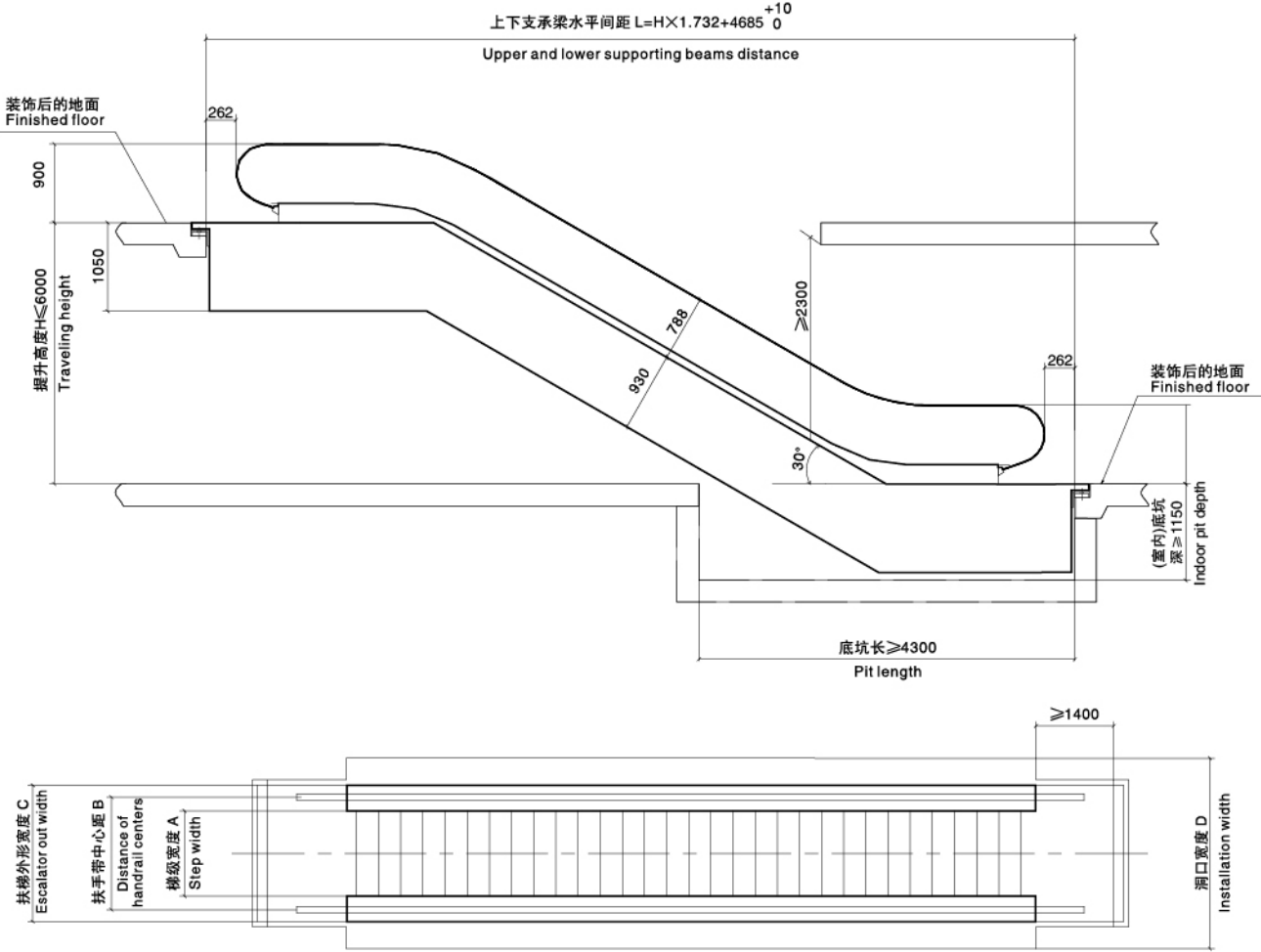


13.围裙板保护 Skirt panel protection	当外物被夹在围裙板和梯级之间时，自动扶梯（自动人行道）将停止运行。 When some foreign substance has been clipped in between the skirt panel and the step, the escalator (auto-walk) will automatically stop the operation.
14.制动器保护 Brake protection	当电力不足或任一安全装置动作时，制动装置将通过弹簧弹力作用使制动功能生效，自动扶梯（自动人行道）将停止运行。 When the electric force falls short of supply or it acts any of the safety device, the brake function goes into effect by the safety device through the spring resilience action. In this way, the escalator (auto-walk) stops the operation.
15.检修安全开关 Safety inspection switch	检修保养时，防止自动扶梯自动启动的安全装置。 It is a safety device to prevent from the escalator starting during the inspection and maintenance.
16.梯级照明 Step illumination	扶梯上下段，梯级下部装有照明以提醒乘客注意安全。 Illumination exists in the upper and lower ends of the escalator, in the lower part of the step in order to remind the passengers of the security matters.
17.启动警铃装置 Alarm bell starting device	自动扶梯启动时警铃响起，以提醒乘客注意。 The alarm bell rings when it starts the escalator in order to remind the passengers of the security matters.
18.扶手带断裂保护 Control device for handrail breakage	当扶手带断裂时，自动扶梯（自动人行道）将停止运行。 When the handrail is broken, the escalator (auto-walk) will automatically stop the operation.
19.围裙板刷 Skirt panel brush	可选用的安全装置，在围裙板和梯级之间装有刷子使乘客的鞋子不会碰到围裙板。 Optional safety device installs brush between step and skirting so that the passengers' shoes will not touch the skirting.

可选用的安全装置 Optional safety device	说明 Description
20.扶手带速度监控 Handrail speed monitor	当扶手带的运行速度比梯级慢于一定的百分比，自动扶梯（自动人行道）将停止运行。 When the handrail speed versus step is slower than certain percentage, the escalator (auto-walk) will stop the operation.
21.防火卷帘门装置 Fire-proof shutter	当该装置作用时，可停止自动扶梯（自动人行道）运行，装置位于自动扶梯（自动人行道）附近。 It prevents from the escalator slide and ensures the human security in case of the drive chain breakage or the out-of-order of the brake.
22.下部机房排水功能 Lower machine room drain function	当下部机房进水超过标准时，自动排水系统运行（室外梯型）。 When water inlet of lower machine room exceeds the standard, drain system runs automatically. (Outdoor elevator type)
23.紧急制动器 Emergency brake	驱动链断裂或制动失灵防止扶梯下滑确保人员安全（6m < H时必须配备） It prevents from the escalator slide and ensures the human security in case of the drive chain breakage or the out-of-order of the brake. (It should be allocated with the emergency brake when 6m < H.)

30° ESCALATOR
CONSTRUCTION PARAMETERS

30° 自动扶梯土建参数



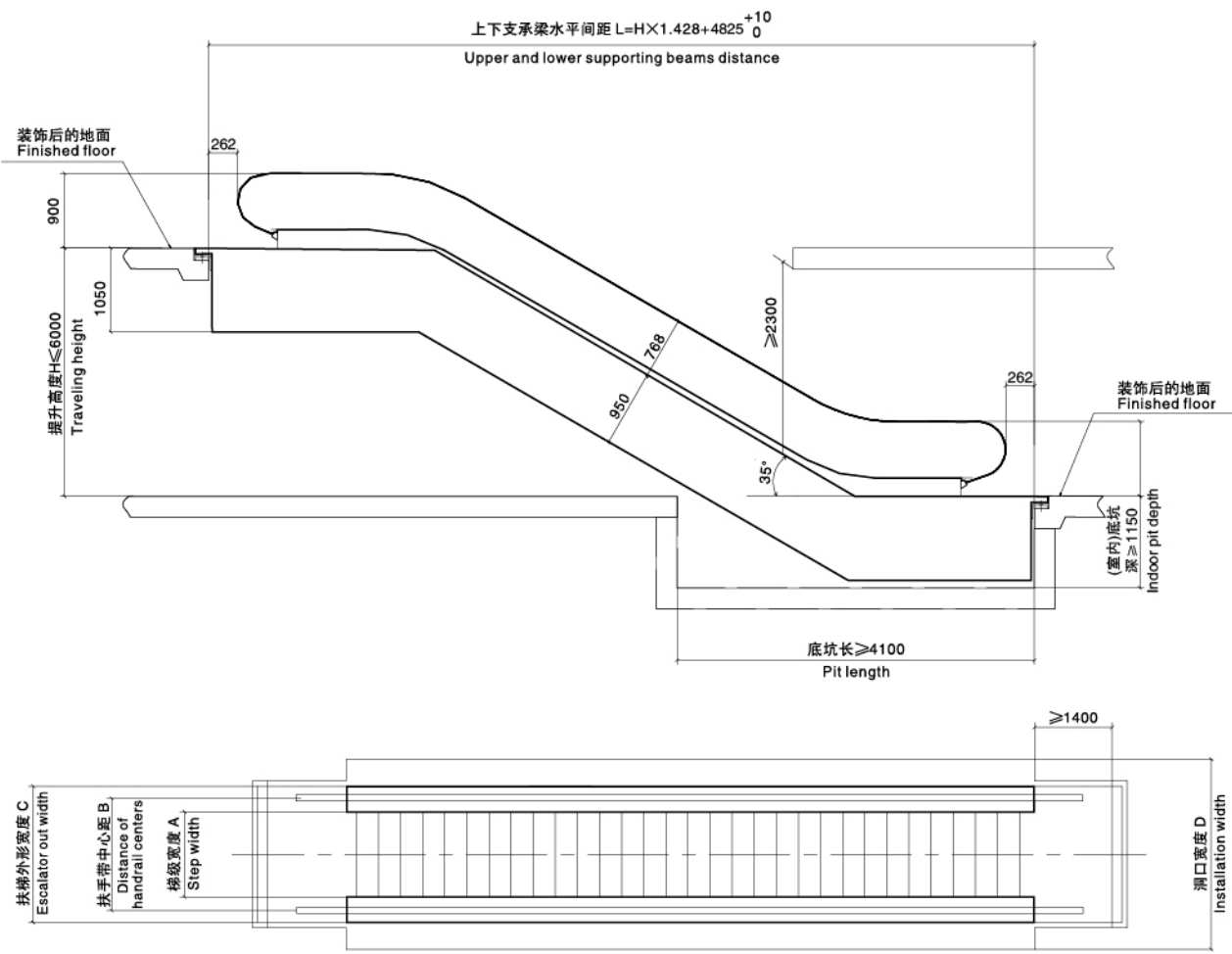
30° 自动扶梯参数表
30° Escalator parameters

型号 Model	提升高度H (mm) Traveling height	名义速度 (m/s) Nominal speed	最大输送能力(人/h) Maximum delivery capacity	倾斜角 Inclination	水平梯级 (节) Flat step num	驱动主机功率(kW) Motor power	A(mm)	B(mm)	C(mm)	D(mm)
(600/30°)	$3000 \leq H \leq 6000$	0.5	4500	30	2	8	600	838	1200	≥ 1260
(800/30°)	$3000 \leq H \leq 5000$	0.5	6750	30	2	8	800	1038	1400	≥ 1460
	$5000 \leq H \leq 6000$					11				
(1000/30°)	$3000 \leq H \leq 4500$	0.5	9000	30	2	8	1000	1238	1600	≥ 1660
	$4500 \leq H \leq 6000$					11				
	$6000 \leq H \leq 7500$					15				

(本资料仅供设计选用参考，详细参数以技术图纸为准。)
The data is for design reference only. For the detailed parameters, please take the technical drawing as the criterion.
梯级宽度为600mm时，桁架上部水平段需加长。
When step width is 600mm, horizontal section of upper truss shall be lengthened.

35° ESCALATOR
CONSTRUCTION PARAMETERS

35° 自动扶梯土建参数



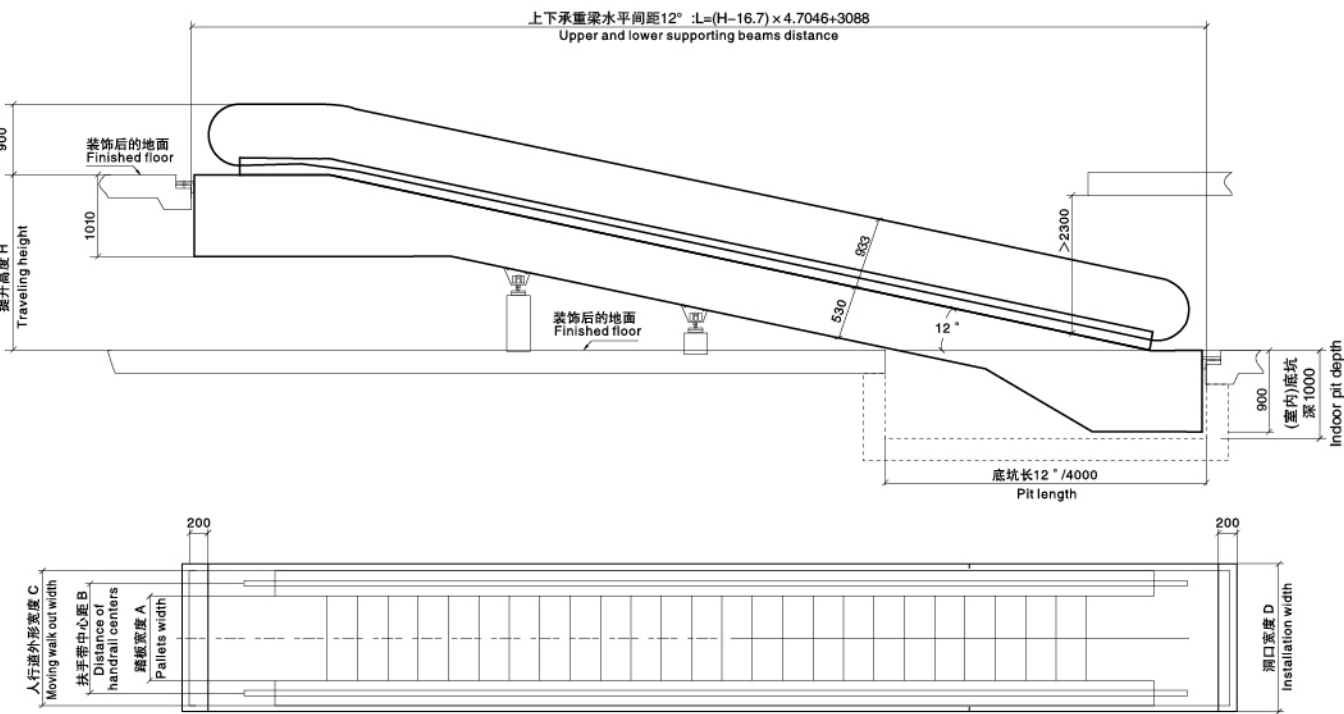
35° 自动扶梯参数表
35° Escalator parameters

型号 Model	提升高度H (mm) Traveling height	名义速度 (m/s) Nominal speed	最大输送能力(人/h) Maximum delivery capacity	倾斜角 Inclination	水平梯级 (节) Flat step num	驱动主机功率(kW) Motor power	A(mm)	B(mm)	C(mm)	D(mm)
(600/35°)	$3000 \leq H \leq 6000$	0.5	4500	35	2	8	600	838	1200	≥ 1260
(800/35°)	$3000 \leq H \leq 5500$	0.5	6750	35	2	8	800	1038	1400	≥ 1460
	$5500 \leq H \leq 6000$					11				
(1000/35°)	$3000 \leq H \leq 4500$	0.5	9000	35	2	8	1000	1238	1600	≥ 1660
	$4500 \leq H \leq 6000$					11				

(本资料仅供设计选用参考，详细参数以技术图纸为准。)
The data is for design reference only. For the detailed parameters, please take the technical drawing as the criterion.
梯级宽度为600mm时，桁架上部水平段需加长。
When step width is 600mm, horizontal section of upper truss shall be lengthened.

12° MOVING WALK
CONSTRUCTION PARAMETERS

12° 自动人行道土建参数



12° 自动人行道参数表

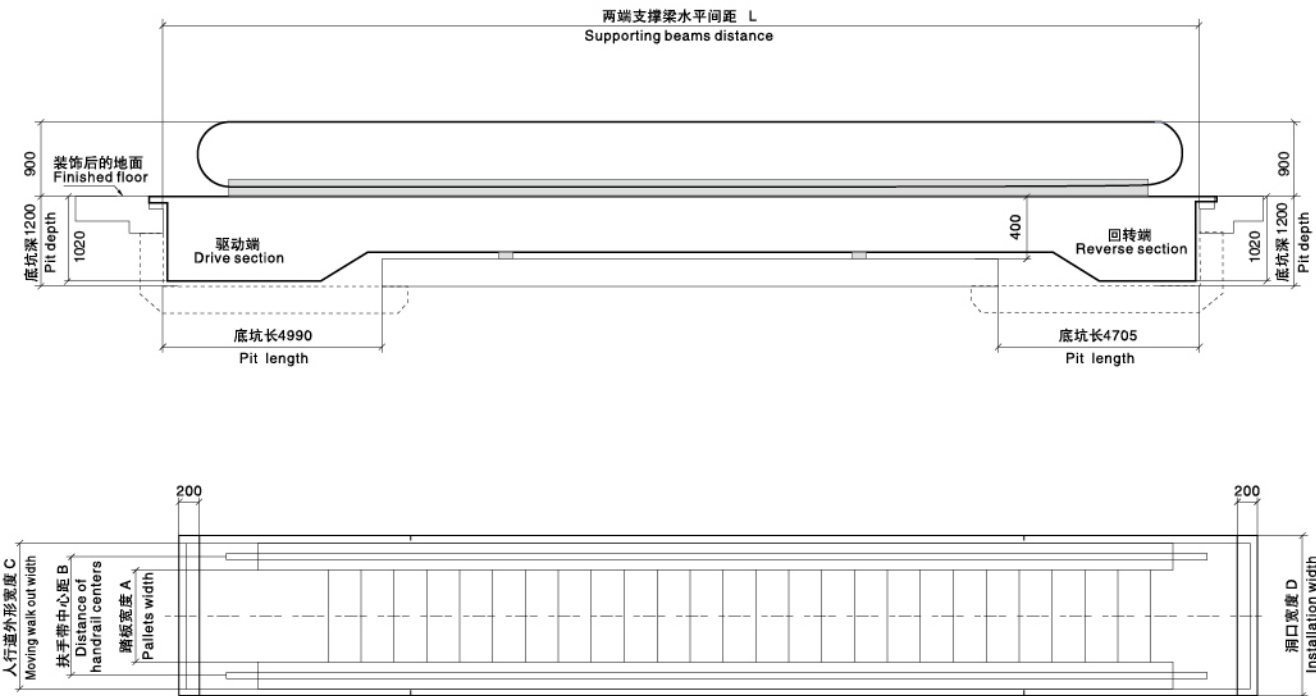
12° Moving Walk parameters

型号 Model	提升高度H (mm) Traveling height	名义速度 (m/s) Nominal speed	最大输送能力(人/h) Maximum delivery capacity	倾斜角 Inclination	驱动主机功率(kW) Motor power	A(mm)	B(mm)	C(mm)	D(mm)
(800/12°)	1000≤H≤3800	0.5	6750	12	1×7.5	800	1038	1400	≥1460
	3800<H≤6000				1×11				
	6000<H≤7600				1×15				
	7600<H≤7800				2×11				
(1000/12°)	1000≤H≤3000	0.5	9000	12	1×7.5	1000	1238	1600	≥1660
	3000<H≤4800				1×11				
	4800<H≤6000				1×15				
	6000<H≤6200				2×11				

(本资料仅供设计选用参考，详细参数以技术图纸为准。)
The data is for design reference only. For the detailed parameters, please take the technical drawing as the criterion.

0° MOVING WALK
CONSTRUCTION PARAMETERS

0° 自动人行道土建参数



0° 自动人行道参数表

0° Moving Walk parameters

型号 Model	输送长度L (mm) Delivery length	名义速度 (m/s) Nominal speed	最大输送能力(人/h) Maximum delivery capacity	倾斜角 Inclination	驱动主机功率(kW) Motor power	A(mm)	B(mm)	C(mm)	D(mm)
(800/0°)	80000	0.5	6750	0	5.5	800	1038	1400	≥1460
	80000<L≤130000				8				
	130000<L≤150000				11				
(1000/0°)	70000	0.5	9000	0	5.5	1000	1238	1600	≥1660
	70000<L≤110000				8				
	110000<L≤150000				11				

(本资料仅供设计选用参考，详细参数以技术图纸为准。)
The data is for design reference only. For the detailed parameters, please take the technical drawing as the criterion.

SERVICE SYSTEM

服务体系

优质的服务是电梯产品安全运行的有力保障。从销售到安装维保的每一个环节，爱默生都提供专业而优质的服务。

Quality service is a strong guarantee for the safe operation of elevator products. EMERSON provide professional and quality service from sales to installation and maintenance.



安装工程

爱默生所有负责安装的工程师都经过严格而系统的培训，能够以高标准完成电梯的安装和调试，协调电梯安装全过程，控制电梯安装质量和安全，保障电梯产品各项服务功能和技术指标完美实现，为客户提供全方位的技术支持，同时为电梯的无故障运行和维护保养奠定良好基础。

Installation engineering

All EMERSON engineers responsible for the installation have received rigorous and systematic training, to ensure the installation and debugging of elevator, coordination of the entire process of elevator installation, the installation quality and safety with high standard, and guarantee of the perfect realization of service function and technical specifications, to provide customers with comprehensive technical support, while laying a good foundation for trouble-free operation and maintenance of the elevator.

维修与保养

爱默生拥有专业的维保团队。负责保障您的电梯每天处于安全舒适的运行环境；我们为每台电梯量身定做保养计划，结合国家标准和爱默生的安全要求，保证设备始终处于最佳状态；运用电梯物联网技术实现了对每一台电梯的智能管理。24小时、365天对电梯的运行状态进行实时监控，做到自动报警和风险预警，保障电梯安全运行；完善的备件支持体系，为故障快速排出提供强大而及时的零部件支持。

Repair and maintenance

EMERSON has a professional maintenance team. We are responsible for guaranteeing your escalators and elevators remain at safe and comfortable operating environment; we customize maintenance program for each elevator, combined with the national standards and safety requirements of EMERSON, to ensure that the equipment is always in the best condition; Using Internet of Things technology to realize smart management of each elevator. 24 hours and 365 days real-time monitoring of the operating condition of elevators, realizing automatic alarm and early warning of risks, to guarantee the safe operation of elevators; Complete spare parts support system provides powerful and timely component support for the rapid trouble clearing.

