



Paul wanted his friends to be strong and diligent, trying always to please God.

Use the compass code to fill in the blanks below.

“ _____
 2SE 2SW 3E 2SW 3NW 1E 3SW 1N 2NE 1SE 1SE 2SW

 2S 1E 1N 2NE 1N 3SE 1SE 3E 2SW 3NW 1E 2NE 1N 2W 1W

 1SE 2SW 3NE 2SW 2SE 2E 2NE 2SW 3SE 1N

 2E 2S 2S 1E 2SW 1SW 1N 2SE 2E

 3N 2SW 1E 3S 2NW 2E 3SE 3N 1S 2SW 2SE 2SW 1N 2NE

 3SE 2SW 1SE 3SE 1N 1N 2SE 1SE 2SW 3SW 1N

 2E 2NE 1S 2E 2NW 1N 2SE 2E 3SE 2SE 3N 1S 2SW

 1NE 2SW 1E 1E 1N 1NE 1SE 2W 3E

 1S 2E 3SE 2SE 2W 1N 2NE 1SE 1S 1N 3N 2SW 1E 2SE

 2SW 1W 1SE 1E 3NW 1SE 1S
 ”

Children's Worship Bulletin™

Ages 7+ October 9, 2022 • 2 Timothy 2:8-15

Obtaining Salvation In Christ Jesus

Though Paul was put in chains, the Gospel could not be chained.

Think of words that fit each clue and picture. Use the first letters to complete the sentence.



has an odor



has a pointed head



has a mane



has lava



has a core



has a trunk



has ice blocks



has a peel



has an eye

Paul endured suffering so others might obtain _____ in Christ.

Paul endured suffering,
and he encouraged others to endure.

Think of 4-letter words to match the definitions.
Use the code to find Paul's encouraging words.

To crush or pulverize

● 1 ● 2 ● 3 ● 4

Impolite, having bad manners

■ 1 ■ 2 ■ 3 ■ 4

Look-alike born at the same time

▲ 1 ▲ 2 ▲ 3 ▲ 4

Games with tees and holes

◆ 1 ◆ 2 ◆ 3 ◆ 4

“

▲ 3 ◆ 4 ▲ 2 ■ 4

■ 4 ▲ 4 ■ 3 ■ 2 ■ 1 ■ 4 ▲ 2 ■ 4

▲ 2 ▲ 3 ◆ 3 ◆ 3 ● 2 ◆ 3 ● 3 ◆ 2

■ 1 ■ 4 ▲ 3 ◆ 1 ▲ 4

”

▲ 2 ▲ 3 ▲ 1 ● 4 ● 4 ▲ 3 ● 1



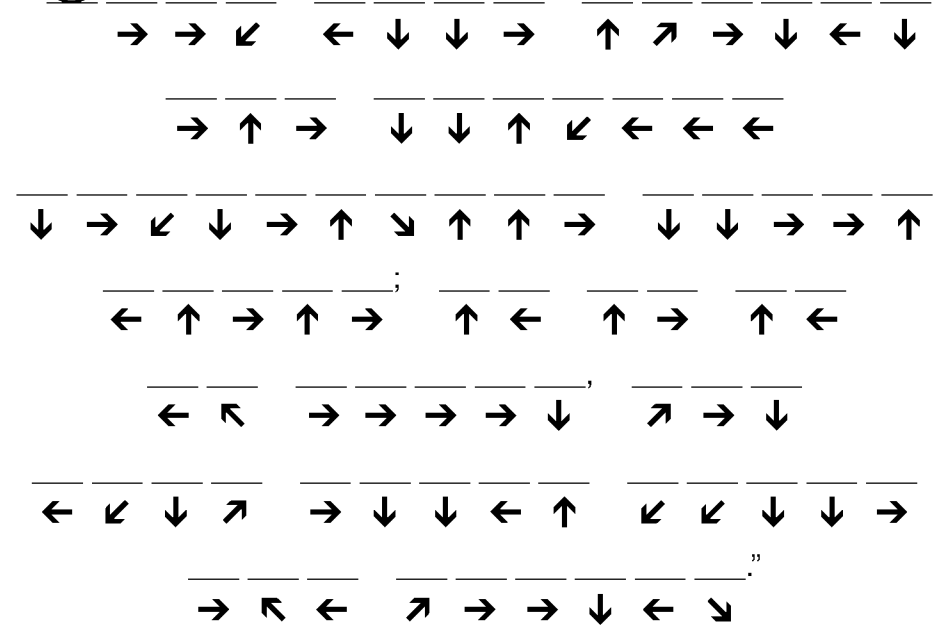
Paul encouraged Timothy to remind
the believers of these things.



Follow the arrows to fill in
the blanks with the correct letters.

(W)	A	R	O	V	A	L	U	A	N
T	N	E	F	N	F	O	E	O	D
H	B	R	O	D	I	S	N	Y	R
E	M	E	G	A	T	I	L	S	U
T	S	N	I	G	D	S	T	N	I
Q	U	N	G	O	R	H	L	I	S
A	E	I	A	W	T	O	H	E	T
R	R	L	B	O	U	S	E	W	N

“ (W)





What does the psalmist say is the beginning of wisdom?



Circle words in each column as directed. Then fill in the remaining words below, top to bottom, left to right.

4 MONTHS	4 ANIMALS	4 FOODS	2 COLORS
A	P	M	P
U	A	E	U
G	N	A	R
U	T	T	P
S	H	G	L
T	E	O	E
M	R	O	U
A	B	O	N
R	I	O	D
C	R	S	E
H	D	O	R
M	L	U	S
A	O	P	T
Y	R	B	A
F	D	R	N
E	D	E	D
A	O	A	I
R	G	S	N
J	B	A	G
U	E	L	R
N	A	A	E
E	R	D	D

“The _____ of the _____ is the beginning of wisdom; all who follow His precepts have _____.”

To Him belongs eternal praise.”

Children's Worship Bulletin™

Ages 7+

October 9, 2022 • Psalm 111:1-10

The Beginning of Wisdom

The psalmist praises the Lord. What does he say about God's works?

To find the words to fill in the blanks, shade in all the letters that have an odd number.

Word search grid with letters and numbers:

Row 1: 70 I 11 B 18 G 35 O 44 R 23 S 14 E 27 L 3 A 2 M 3 T

Row 2: 38 J 20 V 64 F 58 E 8 I 32 R 12 B 68 G 28 O 54 R 30 S

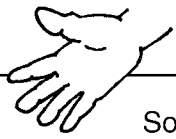
Row 3: 60 F 48 A 17 D 22 T 29 E 46 H 6 P 15 D 40 I 56 S

Row 4: 50 E 16 L 42 A 24 M 10 T 4 F 2 I 66 O 18 R 34 L 6 E

Row 5: 47 F 14 I 39 O 12 R 41 L 20 E 13 J 38 V 9 F 16 E 25 I 37 R

“ _____ are the works of the Lord; they are pondered by all who delight in them. Glorious and majestic are His _____, and His righteousness endures _____.”

What else does the psalmist say about the works of the Lord?



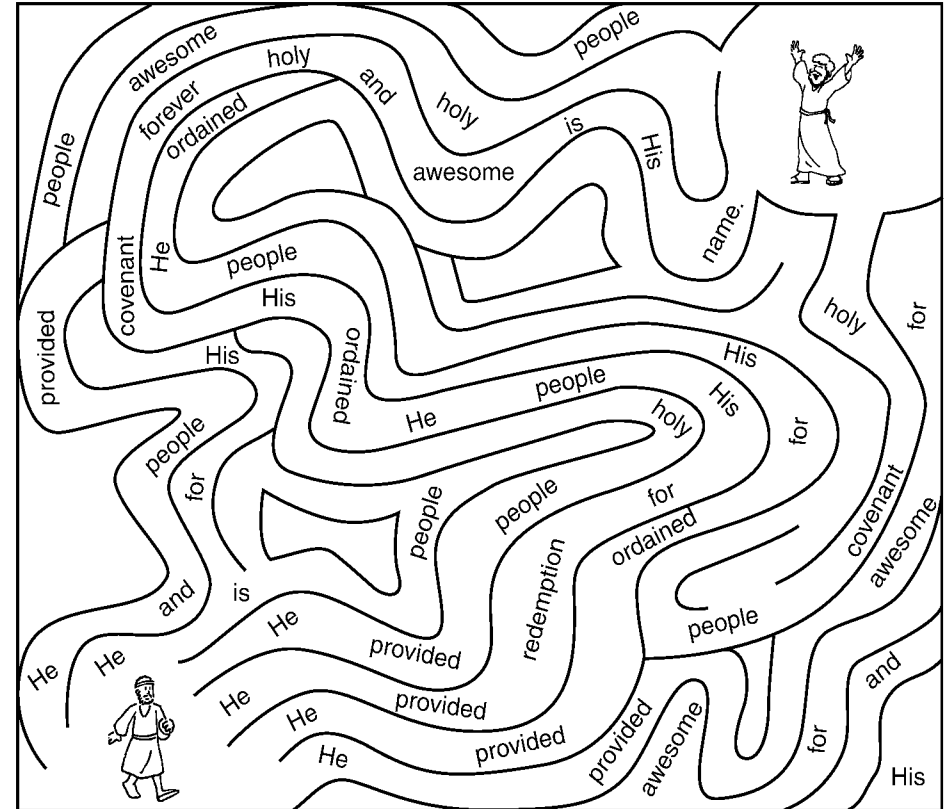
Solve the math problems and fill in the blanks.

just 4 + 4
 ever 8 - 1
 works 4 + 2
 uprightiness 5 - 3
 trustworthy 2 + 3
 ever 2 + 1
 faithfulness 8 + 3
 established 11 - 1
 precepts 6 - 2
 hands 2 - 1
 faithful 5 + 4

"The 6) _____ of His
 1) _____ are 9) _____ and
 8) _____; all His 4) _____ are
 5) _____. They are
 10) _____ for 3) _____ and
 7) _____, done in 11) _____
 and 2) _____."

What does the Lord provide?

Follow the path to fill in the blanks.



" _____

 _____;

 _____."

Naomi's husband died and her 2 sons married women named Orpah and Ruth. Later, Naomi's 2 sons also died, leaving the 3 women alone.

What happened next?



Use this code to find out.

A B C D E F G H I J K L M N O P Q R S T U V W X Y Z
Z Y X W V U T S R Q P O N M L K J I H G F E D C B A

G S V D L N V M

K I V K Z I V W G L

I V G F I M G L M Z L N R H

S L N V O Z M W M Z L N R

H Z R W, T L Y Z X P,

V Z X S L U B L F, G L

B L F I N L G S V I H

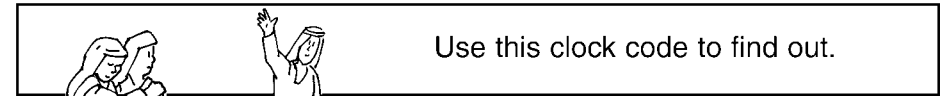
S L N V, G S V B H Z R W,

" D V D R O O T L Y Z X P

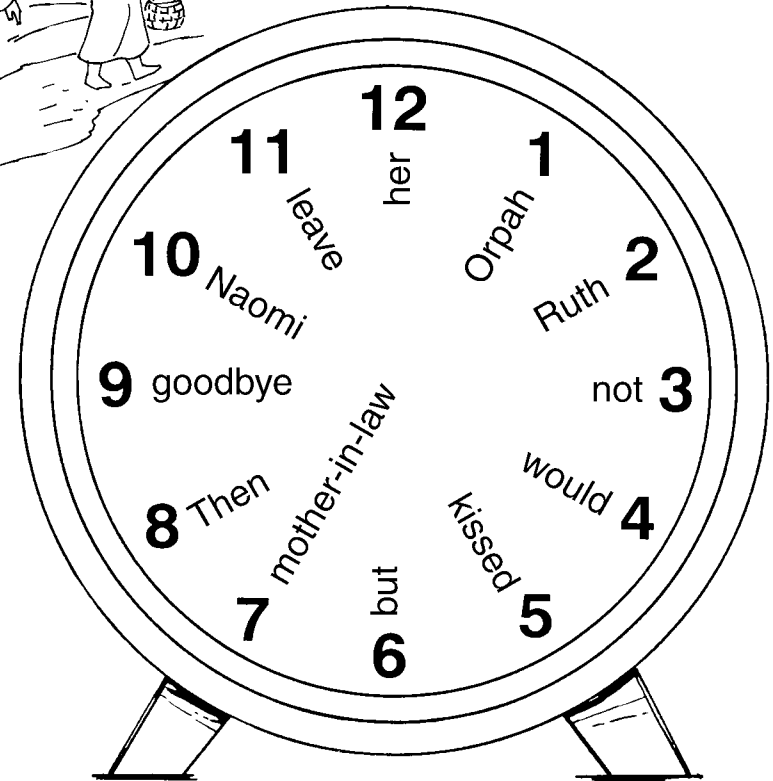
D R G S B L F G L

B L F I K V L K O V,

But Naomi again told Orpah and Ruth to go to their mothers' homes. What happened next?



Use this clock code to find out.



8:00 1:00 5:00 12:00
7:00 9:00
6:00 2:00 4:00
3:00 11:00 10:00