

# NEWSLETTER

April 2025

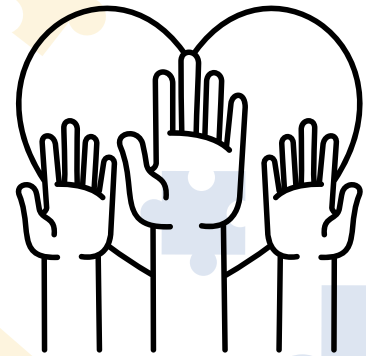


## MISSION

To empower individuals with disabilities to thrive by promoting inclusion, accessibility, and equal opportunities, fostering independence, and celebrating their unique abilities and contributions. For all those we serve it shall be done with the highest level of integrity and compassion.

## WE PRIORITIZE YOUR TRUST AND SAFETY

We prioritize your trust and safety by being fully **licensed, bonded, and insured** at Circle of Strength, ensuring you receive the highest standard of care.



## Referral Team

**PATRICIA - DIRECTOR:**  
[PHUGHES@NJCIRCLEOFSTRENGTH.COM](mailto:PHUGHES@NJCIRCLEOFSTRENGTH.COM)  
201-874-4049

**JEREMY - ASSISTANT DIRECTOR:**  
[JBROWN@NJCIRCLEOFSTRENGTH.COM](mailto:JBROWN@NJCIRCLEOFSTRENGTH.COM)  
732-640-8383

**CORINNE - ASSISTANT DIRECTOR:**  
[ECRIVERA89@NJCIRCLEOFSTRENGTH.COM](mailto:ECRIVERA89@NJCIRCLEOFSTRENGTH.COM)  
423-430-6571

**FOR OUR  
CIRCLE OF STRENGTH FAMILIES**

Visit website for  
more information!

[WWW.NJCIRCLEOFSTRENGTH.COM](http://WWW.NJCIRCLEOFSTRENGTH.COM)

(908) - 290 - 0227



# CELEBRATING WOMEN IN THE WORKPLACE

Ashley Simmons

Being a woman is your superpower. You were born to do incredible things and the huge impact I know you will have on this world, will change lives for the better. You are worth every dream you have and every achievement you will accomplish. Don't let anyone dim your light, shine brighter than the sun even in the darkest times, your light will save at least one life.

Destiny Monda Alyssa Simmons

Circle of Strength is a home care agency that supports and values women as caregivers and clients. It offers opportunities, encouragement, and resources to help women strengthen their foundations and thrive in their own ways. Empowerment is about providing the necessary tools for success.

Having women like our CEO, Elise, who is dedicated to mentoring, empowering, and leading women into their greatness, is truly inspiring. And with a director like Patricia, who shows us how high we can reach, we're given the guidance and support to thrive. They are both incredible leaders who genuinely want to see us succeed and grow.

Angelina Rivera

I uplift and empower women in the workplace by sharing my knowledge and skills, ensuring they have the tools they need to succeed. I make it a priority to offer guidance, support, and encouragement, letting them know that I am always available to assist and uplift them.

Giselle Hernandez

Women, especially Latina women, in male-dominated fields like sports broadcasting inspire me through their hard work and dedication. Elise empowers women at Circle of Strength (COS), allowing them to be unique and true to themselves without conforming to norms. COS has significantly contributed to my personal growth and realization of my potential.

Perla Rodriguez

The majority of our staff are women, many of whom are mothers and wives. Circle of Strength allows them to embrace these roles while encouraging personal growth. I advise them to pursue their desires confidently and to avoid underselling themselves. As Oprah Winfrey said, "You get in life what you have the courage to ask for."

Visit website for more information!

[WWW.NJCIRCLEOFSTRENGTH.COM](http://WWW.NJCIRCLEOFSTRENGTH.COM)

(908)-290-0227



# CELEBRATING WOMEN IN THE WORKPLACE

## Pat Cribbin

My mother has inspired me, even after her passing. Circle of Strength is a fulfilling workplace where we can positively impact lives. Seek help when needed, and work hard to chase your dreams.

## Denise Cirona

COS focuses on empowering women in the workplace through kindness and knowledge sharing. It aims to uplift female employees and the women it serves, encouraging the next generation to pursue their desires fearlessly and boldly.

## Patricia Hughes

Circle of Strength is a female-owned business, exemplifying the accomplishments of strong women working together. The educated female staff offers knowledge, skills, and tools to empower other women both personally and professionally.

## Corinne Rivera

I actively support and empower women by offering guidance, listening, and promoting their growth and success. I encourage collaboration and ensure their voices are heard in meetings and discussions.

## Elise Counts

Empowering women to excel and express their creativity is a core mission. As a mentor, I prioritize personal connections, listening to their struggles and providing genuine encouragement. I emphasize the importance of staying true to oneself, advocating for personal well-being, seeking inspiration, and maintaining confidence in choices.

Visit website for more information!

[WWW.NJCIRCLEOFSTRENGTH.COM](http://WWW.NJCIRCLEOFSTRENGTH.COM)

(908)-290-0227





# CERTIFIED CPR TRAINING

## Certified Instructor

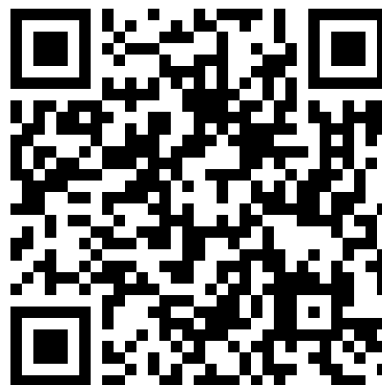
**JESSICA ARMSTRONG**

Certified Instructor

[Jessica@njcircleofstrength.com](mailto:Jessica@njcircleofstrength.com)

Email Jessica to get the link to sign up for your next combo class which will include the online presentation and video's and the next available class for the last step to get certified with compressions

Scan for more information



INFORMATION FOR STUDENTS TAKING A COMBINATION ONLINE + IN-CLASSROOM COURSE:  
Please access your Red Cross Learning Center account

**RED CROSS TRAINING**

Visit website for more information!

[WWW.NJCIRCLEOFSTRENGTH.COM](http://WWW.NJCIRCLEOFSTRENGTH.COM)  
(908)-290-0227



# HOME CARE SERVICES

01

## COMPANION CARE

Companion care provides emotional support, social interaction, and assistance with daily activities to enhance the quality of life for individuals in their own homes.

02

## PERSONAL CARE

Personal care offers hands-on assistance with daily tasks like bathing, dressing, and grooming to support comfort and well-being.

03

## RESPIRE CARE

Respite care provides temporary relief from caregiving duties, whether for an afternoon, a day, or a week, allowing you to focus on self-care, family, and other responsibilities.

04

## DEMENTIA AND ALZHEIMER'S CARE

Provides the perfect balance of safety, comfort, and independence for your loved one, with a trusted caregiver offering experienced support through every stage of dementia or Alzheimer's, helping you navigate these challenges with confidence.

## HOME CARE SERVICES

Scan for more information



or contact us

**DESTINY MONDA**

Home Care Specialist

732-400-5040

# DIRECT SUPPORT SERVICES

01

## INDIVIDUAL SUPPORT

Assisting families by providing support at home, employing live-in caregivers, and aiding family members and loved ones in the hiring of Direct Support Professionals (DSPs) for home assistance.

02

## COMMUNITY INCLUSION

Facilitating shared activities to enrich community experiences together.

03

## BEHAVIORAL SUPPORT

Working together on behavioral support plans and resources within the home for the entire family.

04

## RESPIRE

Short-term breaks for families and caregivers with additional in-home support for your loved ones.

05

## TRANSPORTATION

Providing transportation to our participants to assist them with their doctor's appointment, work, school etc.

06

## COMMUNITY BASED SUPPORTS

Providing community-based services to support their full community participation and realization of personal goals.

## REFERRAL TEAM

Scan for more information



PATRICIA - DIRECTOR  
PHUGHES@NJCIRCLEOFSTRENGTH.COM  
201-874-4049

JEREMY - ASSISTANT DIRECTOR  
JBROWN@NJCIRCLEOFSTRENGTH.COM  
732-640-8383

CORINNE - ASSISTANT DIRECTOR:  
ECRIVERA89@NJCIRCLEOFSTRENGTH.COM  
423-430-6571

Visit website for more information!

[WWW.NJCIRCLEOFSTRENGTH.COM](http://WWW.NJCIRCLEOFSTRENGTH.COM)

(908)-290-0227

# Join our Team



## CHHA- CERTIFIED HOME HEALTH AIDE

Professional caregivers are responsible for helping individuals maintain their health and hygiene in their home setting.

## RN- REGISTERED NURSE

Is a licensed medical professional providing hands-on care in different medical and community settings.

## DSP- DIRECT SUPPORT PROFESSIONAL

### North Jersey

- Fairview
- Garfield
- Old Tappan
- Ramsey
- Stanhope

### Central Jersey

- Allentown
- Edison
- Freehold
- Hillsborough
- Mercerville
- Metuchen
- Monmouth
- Morganville
- Piscataway

### South Jersey

- Barnegat
- Brick Township
- Brown Mills
- Cape May



## LPN- LICENSE PRACTICAL NURSE

A healthcare professional responsible for basic patient care in comfort.

## CNA- CERTIFIED NURSE ASSISTANT

In an entry-level role that provides vital support to both patients and nurses.

## HR TEAM

Scan for more information



## Contact us

ANGELINA RIVERA  
ANGELINAR@NJCIRCLEOFSTRENGTH.COM  
732-646-5574

JUSTING COUNTS  
JUSTINGC@NJCIRCLEOFSTRENGTH.COM  
908-379-8164

Visit website for more information!

[WWW.NJCIRCLEOFSTRENGTH.COM](http://WWW.NJCIRCLEOFSTRENGTH.COM)

(908)-290-0227



# JOIN US AT THESE EVENTS WE ARE ATTENDING!

<b>APRIL 24</b>	<b>THE ALL ABILITIES CARNIVAL</b>
<b>APRIL 26</b>	<b>INCLUSIVE FIELD DAY</b>
<b>APRIL 29</b>	<b>BOMBERS BEYOND CAFE TRANSITIONS RESOURCE FAIR</b>
<b>MAY 03</b>	<b>SPRING INTO ACTION DISABILITY FAIR</b>

<b>MAY 06</b>	<b>WOMEN WHO EMPOWER LUNCHEON</b>
<b>MAY 14</b>	<b>2025 OCEAN TOWNSHIP SPECIAL SERVICES TRANSITION FAIR</b>
<b>JUNE 08</b>	<b>AUTISM WALK FOR A DIFFERENCE 2025</b>
<b>JULY 16</b>	<b>JERSEY CITY PUBLIC SCHOOL'S SPECIAL EDUCATION DEPARTMENT TRANSITION RESOURCE FAIR</b>

## OUR PARTNERS AND SUPPORT

**NASSANS  
PLACE**

**JAR OF HOPE**

**UNLIMITED ABA  
SPORTS, LLC**

**EMBRACE  
WELLNESS**

**VITA MOBILE  
CARE**



### NOTE FROM CEO

extremely grateful to advocate for our  
community and empower family circles.

*"Start by doing what's necessary; then do what's possible; and suddenly you are doing the impossible."*

*-Francis of Assisi*

**Visit website for more information!**

**WWW.NJCIRCLEOFSTRENGTH.COM**

**(908)-290-0227**

