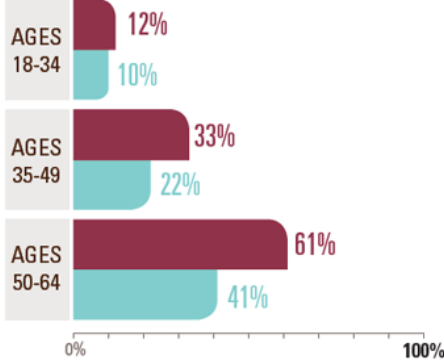


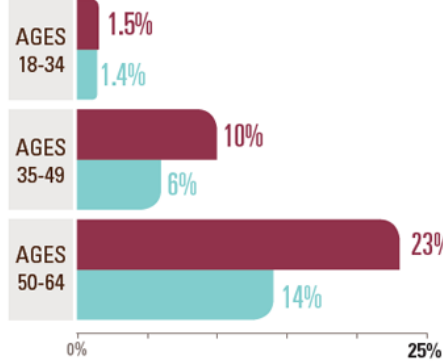
## African American Health

What you should know

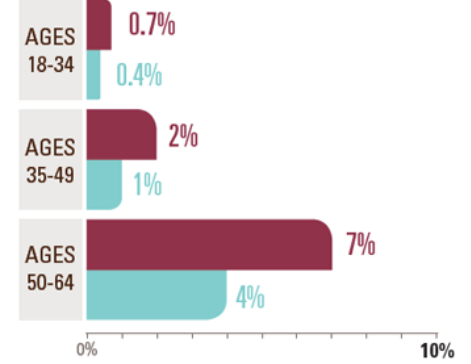
### High Blood Pressure



### Diabetes



### Stroke



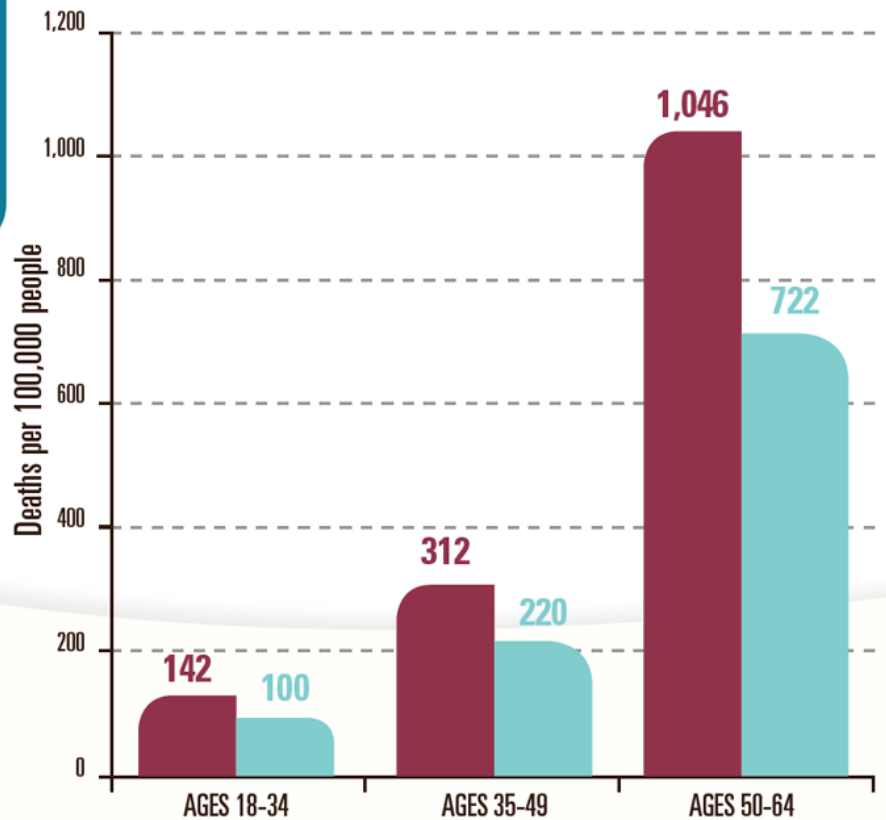
African American

White

African Americans and whites include Hispanic and non-Hispanic origin.

SOURCE: Behavioral Risk Factor Surveillance System, 2015.

African Americans are more likely to die at early ages from all causes.



SOURCE: US Vital Statistics, 2015.

Problem: Young African Americans are living with diseases more common at older ages.

Disease type	Ages	Race/Ethnicity	Percent (%)
High blood pressure	18-34	African American	12
		White	10
	35-49	African American	33

		White	22
	<b>50-64</b>	African American	64
		White	41
<b>Diabetes</b>	<b>18-34</b>	African American	1.5
		White	1.4
	<b>35-49</b>	African American	10
		White	6
	<b>50-64</b>	African American	23
		White	14
<b>Stroke</b>	<b>18-34</b>	African American	0.7
		White	0.4
	<b>35-49</b>	African American	2
		White	1
	<b>50-64</b>	African American	7
		White	4

African Americans and whites include Hispanic and non-Hispanic origin.

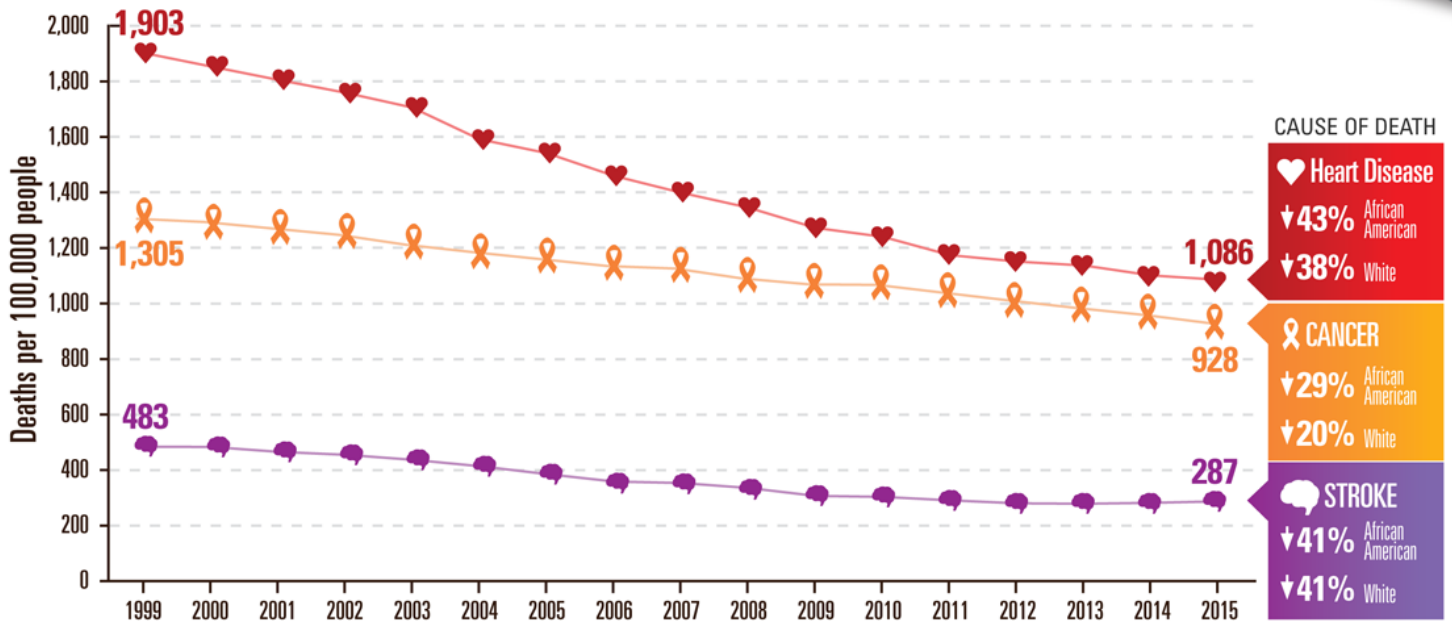
Source: Behavioral Risk Factor Surveillance System, 2015.

African Americans are more likely to die at early ages from all causes.

<b>Ages</b>	<b>Race/Ethnicity</b>	<b>Deaths per 100,000 people</b>
<b>18-34</b>	African American	142
	White	100
<b>35-49</b>	African American	312
	White	220
<b>50-64</b>	African American	1,046
	White	722

# The leading causes of death for African Americans have decreased from 1999–2015.

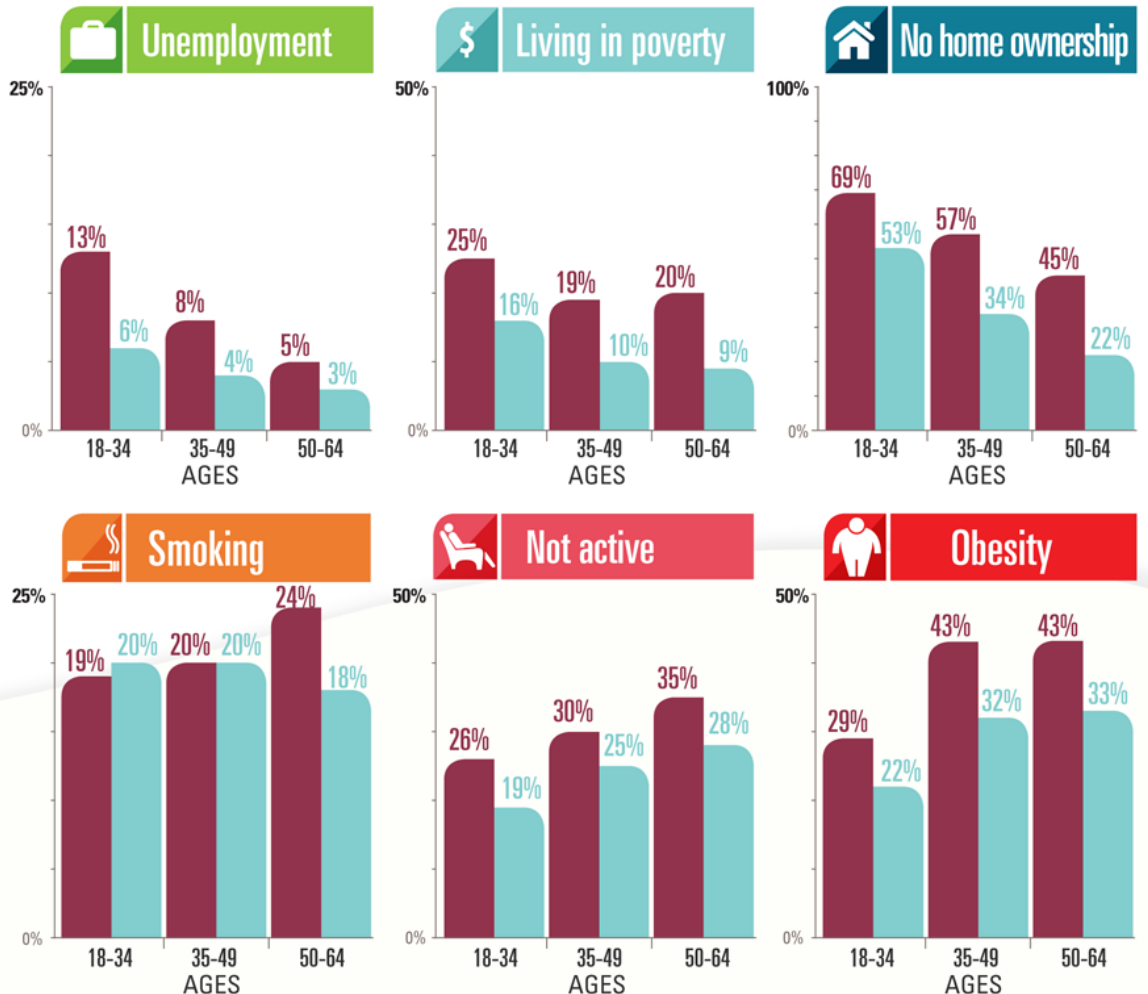
## Deaths in African Americans ages 65 years and older



SOURCE: US Vital Statistics, 1999–2015.

## Some social factors and health risks affect African Americans at younger ages.

**African American**  
**White**



SOURCES: Behavioral Risk Factor Surveillance System, 2015; American Community Survey of the US Census Bureau, 2014.

A line graph shows how deaths per 100,000 people in African Americans ages 65 years and older decreased steadily from 1999 to 2015.

Deaths in African Americans ages 65 years and older

Year	Heart disease	Cancer	Stroke
1999	1,902.6	1,305	483.4
2000	1,854.5	1,293.1	483.5
2001	1,805.5	1,269.6	466.1
2002	1,759.8	1,247	455.7
2003	1,705.6	1,210.8	437.1
2004	1,591.5	1,185.1	414.1
2005	1,540.8	1,159.8	384.7
2006	1,460.4	1,134.8	359
2007	1,399.4	1,126.7	354.1
2008	1,345.5	1,090.2	335.8
2009	1,272.9	1,068.8	307.8
2010	1,240.8	1,067.9	303.7
2011	1,174	1,039.1	291.7
2012	1,151	1,010.6	281
2013	1,136.4	983.3	278.7
2014	1,100.8	958.9	281.6
2015	1,085.5	927.7	287.2

The causes of death included in this study were heart disease, cancer, and stroke. The decreases in deaths due to heart disease, cancer, and stroke are shown for African Americans and whites.

Cause of Death	Decrease (%)	Race/Ethnicity
Heart disease	43	African American
	38	White
Cancer	29	African American
	20	White
Stroke	41	African American
	41	White

Some social factors and health risks affect African Americans at younger ages:

Social factor/health risk	Ages	Race/Ethnicity	Percent (%)
Unemployment	18-34	African American	13
		White	6
	35-49	African American	8
		White	4
	50-64	African American	5
		White	3
Living in poverty	18-34	African American	25
		White	16
	35-49	African American	19
		White	10
	50-64	African American	20

		White	9
<b>No home ownership</b>	18-34	African American	69
		White	53
	35-49	African American	57
		White	34
	50-64	African American	45
		White	22
<b>Could not see an MD because of cost</b>	18-34	African American	19
		White	15
	35-49	African American	19
		White	15
	50-64	African American	18
		White	12
<b>Smoking</b>	18-34	African American	19
		White	20
	35-49	African American	20
		White	20
	50-64	African American	24
		White	18
<b>Not active</b>	18-34	African American	26
		White	19
	35-49	African American	30
		White	25
	50-64	African American	35
		White	28
<b>Obesity</b>	18-34	African American	29
		White	22
	35-49	African American	43
		White	32
	50-64	African American	43
		White	33

SOURCES: Behavioral Risk Factor Surveillance System, 2015; American Community Survey of the US Census Bureau, 2014.

Page last reviewed: May 2, 2017

Page last updated: May 2, 2017

Content source: National Center for Chronic Disease Prevention and Health Promotion (<https://www.cdc.gov/chronicdisease/index.htm>)

Page maintained by: Office of the Associate Director for Communications (OADC)