



**Nightowl
Stage
Lighting.com**

230W 7R Beam Moving Head Light



User Instruction



This product manual contains important information about the safe installation and use of this projector. Please read and follow these instructions carefully and keep this manual in a safe place for future

Thank you for choosing our products.

This user manual includes important informations about how to install and use safely. Please read carefully the requirements of installation and operation .

At the same time, please return this user manual properly preserved, for a rainy day.

The light is very good, humanization and industrial design perfect combination, attractive appearance, fluent. The lamp body of aluminum alloy and high temperature resistant engineering plastics design, good heat dissipation effect. Transmission mechanism adopts electronic positioning technology Products completely accord with CE standard, adopts the international standard DMX512 signal control. Widely used in televisions, DISCO, dance halls, night clubs and other indoor places and outdoor performances.

This product when in the factory are performance in good condition and completely packed. So users should strictly comply with this specification statement warnings and instructions, any damage caused by misuse is not our company guarantee. If ignore this manual operation to fault and problem, It is not our responsible for the dealer. This user manual such as technical subject aren't changed without prior notice.

Safety warning information

Before the first time to use it, Please check whether the damage in transit, if happen damages in transit, please do not use this lamp, and please contact distributors or manufacturers ASAP.

Please don't install the lamp in the ordinary combustible material on the surface. Lamp should be installed in the well ventilated place, and the distance of the wall to keep it over 10cm, at the same time, please check the fan hole was clear.

Do not use lamp direct project in flammable objects, lamp and the radiation of the distance between the objects please keep it over 12 m.

Do not use direct lamp project light source , to avoid damage the eyes.

Before installation, please make sure your use power supply voltage and marked voltage.

Instruction

- Lamp: Philips or Osram MSD Platinum 7R
- Channel mode: 16/20 DMX512 Channel
- Pan scan: 540° (16bit) Electric correction
- Tilt scan: 270° (16bit) Electric correction
- Amazing dot matrix ,four tact switch, 180° turning show
- one color wheel, 14 colors and open Gobo: 17 gobos
- Rotate 8 Facet Rotating Prism, frost
- 0-100% mechanical dimming, mechanical dimming and free dimming available. strobe macro control available.
- Lens optical system mechanical focus .beam angle 0~4°
- Over heat protection
- Voltage: 100-240V, 50/60Hz
- power: 400W
- IP Rate :IP20 Rate
- Dimensions:405x345x475mm
- Carton Packing: 460x430x560mm

- Net weight: 18.00KG

Before any installation, maintain and clean lamp, please make sure the power is off.

1.Operation

touch	wheel	function
Up	turn left	option/edit
down	turn right	option/edit
OK / Enter	press the wheel	Executive start / exit
return	when return menu ,press the wheel	return previous page

Set "Modify address code" as an example, tell about the using of the touch.

1. Touch button "setting" in the main interface, and then into "setting" interface.
2. The 4 touch button in the right, are "up", "ok", "down", "back".
3. Press "up" or "down" button select "DMX address".
4. Press "ok" button into editing state.
5. Press "up" button or "down" button modification address code (using the new address immediately and autosave)
6. Press "OK" button out of the editing state (could omitted)
7. Press "back" button back to the main menu.

If using the wheel, process like bellow :

1. In the main interface , turn the wheel, select "setting" button.
2. Press the turn wheel and then loosen, into "setting" interface.
3. In the "setting" interface, select "DMX address"
4. Press the turn wheel and then loosen, into the editing state.
5. Turn the wheel, modification address code
6. After modification, press turn wheel and then loosen, out of the editing state.
7. Turn the wheel select "back", press turn wheel and then loosen, back into the main interface.

2. Interface description

2.1 Main Interface



Top right corner 3 button for language switching and screen rotation.

EN: English

Bottom row four button corresponding sub interface is introduced, it's in the back.

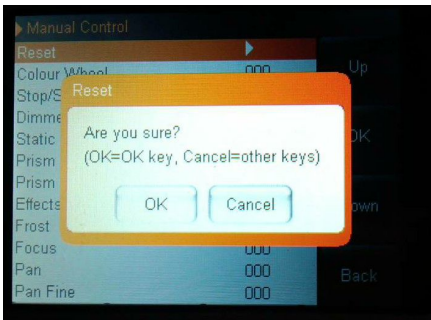
With touch operating mode sub interface is introduced, if use wheel, corresponding relation as follows:

Press up : turn left

Press down : turn right

Press ok : press the wheel

Use wheel operation dialog box



If ok, press the wheel. if cancel, turn the wheel.

2.2 Set up the interface

Option	Instruction	
Run Mode	DMX	Slave state: Accept control table or main engine
	Automatic	Statistics: Automatic operation and send DMX signal for slave Note:If the bulb is putout before , the light bulb will not be full light. If you need to observe the lighting effects, please keep the light on, and then into the automatic state
DMX Address	1-512	Press OK key into edit state, its selected hundred. Press up or down,change address code.Press again OK key, selected ten editor. Press again OK key, select the edit. Press it again to exit the edit state.
Channel Mode	16CH	The 17 th to 20 th channels are invalid.
	20CH	Control Speed of th 17 th to 20 th channels
Invert Pan/Tilt	OFF	
	NO	
Swap Pan-Tilt	OFF	
	NO	Change the channel of XY axis (include trimming)
Encoder Pan-Tilt	NO	Use encoder correct position
	OFF	Do not use encoder correct position
No DMX Signal	KEEP	According to the original state continues to run
	CLEAR	The return of the motor, stop running
Display Power Save	NO	Free 30 seconds after closing backlight
	OFF	Backlight ever bright
Burn on start up	OFF	Power on directly after reset, no light bulb (need to use the menu or control table to manual light bubble)
	NO	After power on automatic light bubble, must wait for the light bulb light up success can be reset
Load Default		Press ok key see the confirmation dialog box, again press ok key, Press OK key into edit

2.3. Information interface

Option	Instruction
Total using time	Cumulative using time (Accuracy to the minute)
The use of time	Use of time since the boot (Accuracy to the minute)

System error logs	If the red indicator shine ,that mean the lamps runs error . The details can be entered sub-interface to view
After you finish view,	you can press the "OK" key to make the error log empty. Pay attention: Sometimes not the Hall or optical coupler installation problems, But the motor cable is connected backwards

2.4. Manual control interface

This interface use to control present light, neither belong to the from the machine state (didn't received DMX signal), nor belong to Host state(send DMX signal).

Option	Instruction	
Reset	Press ok key see the confirmation dialog box, again press ok key, enter the reset interface, all motor reset.	
Color wheel	0-255	Press OK key into edit state, its selected hundred. Press up or down,change channel value .Press again OK key, selected ten editor. Press again OK key, select the edit. Press it again to exit the edit state.
.....	0-255	
the speed of gobo wheel	0-255	
Blub control	ON	
	OFF	

2.5 Advanced interface

Password is "Up down up down " . For the runner , password is "Left right left right"

Touch operation : Press one time on the "up" key (Appear the first "**"),Then press one time on the "down" key (Appear the second "**") , Press one time on the "up" key again (Appear the third "**") , Press one time on the "down" key again (Appear the fourth "**") . At last press "OK" key to do the password authentication .

Runner operation : Turn to the left 1 bar (Appear the first "**") , then turn to the right 1 bar (Appear the second "**") , Turn to the left 1 bar again (Appear the third "**") , Turn to the right 1 bar again (Appear the fourth "**") . At last press runner key to do the password authentication.

Option	Instruction
Touch screen adjustment	After entering the calibration interface, Follow the cross cursor tips go touch the corresponding position. If the four locations to the correct data is received. Then complete the calibration and save the calibration data. If the calibration fails , This process will continue the cycle ,then can at any time by pressing the "OK" button to interrupt calibration.
Reset calibration (Zero calibration)	After entering the sub-interface, Can be adjusted x-axis, Y-axis to the motor's reset position. To compensate for hardware installation error. With address code and channel value different , reset calibration not support One-digit Two-digit Three-digit edited respectively. Not support long press too . And must be in 1 unit step-by-step calibration . Pay attention : Don't reset calibration when the motor work. If

motor is working ,Please stop it then start to reset calibration.If necessary, Please reset operation one time before reset calibration .

2.6 DMX Channel List

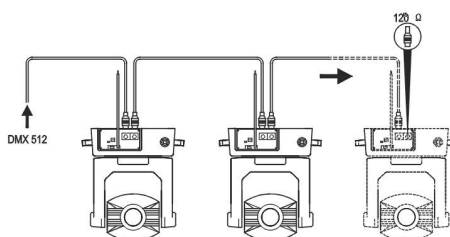
CHANNEL		DESCRIPTION	VALUE	EFFECT
16CH	20CH			
CH1	CH1	COLOR WHEEL	0	WHITE
			5	WHITE + RED
			10	RED
			15	RED + ORANGE
			20	ORANGE
			25	ORANGE + AQUAMARINE
			30	AQUAMARINE
			35	AQUAMARINE + GREEN
			40	GREEN
			45	GREEN + LIGHT GREEN
			50	LIGHT GREEN
			55	LIGHT GREEN + LAVENDER
			60	LAVENDER
			65	LAVENDER + PINK
			70	PINK
			75	PINK + YELLOW
			80	YELLOW
			85	YELLOW + MAGENTA
			90	MAGENTA
			95	MAGENTA + CYAN
			100	CYAN
			105	CYAN + CTO 260
			110	CTO 260
			115	CTO 260 + CTO 190
			120	CTO 190
125	CTO 190 + CTB 8000			
130	CTB 8000			
135	CTB 8000 + BLUE			
140	BLUE			
145	BLUE + WHITE			
150	SLOW ROTATION			
....				
255	FAST ROTATION			
CH2	CH2	SOPT/STROBE	0-3	CLOSED
			4	SLOW STROBE
		
			103	FAST STROBE
			104-107	OPEN
108	SLOW PULSATION			

		 207 208-212 213-225 226-238 239-251 252-255 FAST PULSATION OPEN RANDOM SLOW STROBE RANDOM MEDIUM STROBE RANDOM FAST STROBE OPEN
CH3	CH3	DIMMER	0-255	DARK-BRIGHT 0-100%
CH4	CH4	GOBO WHEEL	0 5 10 15 20 25 30 35 40 45 50 55 60 65 70 75 80 85 90 129 130-134 135 170 171 175 176 180 246 250 251 255	WHITE GOBO 1 GOBO 2 GOBO 3 GOBO 4 GOBO 5 GOBO 6 GOBO 7 GOBO 8 GOBO 9 GOBO 10 GOBO 11 GOBO 12 GOBO 13 GOBO 14 GOBO 15 GOBO 16 GOBO 17 FAST ROTATION (REVERSE) SLOW ROTATION (REVERSE) STOP (WHITE) SLOW ROTATION (FORWARD) FAST ROTATION GOBO 1 SHAKE, SLOW SPEE GOBO 1 SHAKE, FAST SPEED GOBO 2 SHAKE, SLOW SPEED GOBO 2 SHAKE, FAST SPEED GOBO 16 SHAKE, SLOW SPEED GOBO 16 SHAKE, FAST SPEED GOBO 17 SHAKE, SLOW SPEED GOBO 17 SHAKE, FAST SPEED

CH5	CH5	PRISM	0-127 128-255	PRISM EXCLUDED PRISM INSERTED
CH6	CH6	PRISM ROTATION	0-127 128 190 191-192 193 255	POSITION FAST ROTATION SLOW ROTATION STOP SLOW ROTATION FAST ROTATION
CH7	CH7	EMPTY		
CH8	CH8	FOREST	0-127 128-255	FROST EXCLUDED FROST INSERTED
CH9	CH9	FOCUS	0-255	Near-Far
CH10	CH10	PAN	0-255	0-540°
CH11	CH11	PAN FINE	0-255	0-2.1°
CH12	CH12	TILT	0-255	0-270°
CH13	CH13	TILT FINE	0-255	0-1.0°
CH14	CH14	MACRO FUNCTION	0-15 16-255	UNUSED RANGE MARCO FUCTION
CH15	CH15	RESET	0-25 26-76 77-127 128-255	UNUSED RANGE EFFECTS RESET PAN/TILT RESET COMPLETE RESET
CH16	CH16	LAMP CONTROL	0-9 10-100 101-255	UNUSED RANGE LAMP OFF LAMP ON
	CH17	EMPTY		
	CH18	COLOR WHEEL SPEED	0-255	
	CH19	DIMMER-PRISM-FOREST SPEEND	0-255	
	CH20	GOBO WHEEL SPEED	0-255	

Control signal wire connection

Use the CLR-XLR controller line connect every light's DMX input port from controller's DMX input port, and start from the first light's DMX input port connect to the second light's DMX input port, in this way, until connect all of the lights, and then use the loop accompanied connect to the last light's signal input port the connect complete, as the follow picture:



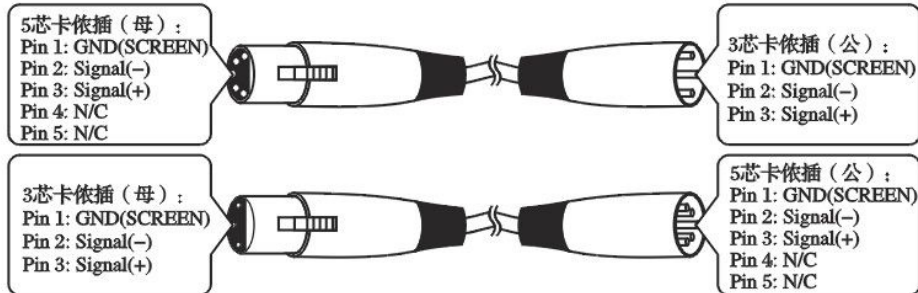
Note:

Please remember that in the last table lamps and lanterns signal outlet connection a loop plug. In this loop inserted in

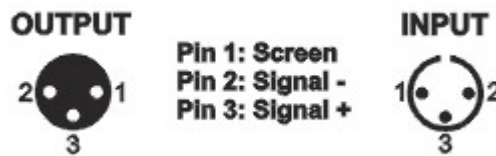
The CANON plug between 2 and 3 feet . Connect a 120 European resistance, connect this loop plug can avoid DM X512 signal reflection phenomenon in the transmission process of signl.

This lamp use 3 core XLR plug (plug seat) . If use 3 core XLR plugs (plug seat), you must use a conversion line (5 core to 3 core), as shown:

The conversion of three and five core plug (male and female)



Three core canon plug DMX512 interface circuit



Maintenance

- If the light's lens damaged or broken, and should need change the new lens, if the bulb damaged or have any deformation, make the light dim, it says that the bulb had run out of its life., should change in time. There are 3 thermal protection device, using for cut off the lights power when it is heating. If the thermal protection device set up, and then need to check whether the fan is normal.
- It need Periodically to clean the light out and in optical lens and the reflector's. put out for the optimization lighting effect, clean time need to see the lights operating frequency and the using of the surrounding environment, using the soft cloth or general glass cleaning products to clean. Suggest clean the external optical system every 20 day, at least clean the internal optical system every 60 days.
- Please don't to use the alcohol etc organic solvent clean the out shell, in case it is damaged.

Statement

- When the products manufactured, They are good performance, complete packaging . All users should comply with the warnings and instructions stated above . Any damage caused by misuse is not within the scope of the company's warranty . Operation manual of neglect caused problems and the fault is not in the dealer is responsible within the scope of Neglect operation manual due to problem is out of dealer responsibility .
 - This handbook stated related matters explanation right belongs to our company .
- This lamp use 3 core XLR plug((plug seat). If use 3 core XLR plugs (plug seat), you must use a conversion line (5 core to 3 core), as shown:The conversion of three and five core plug.