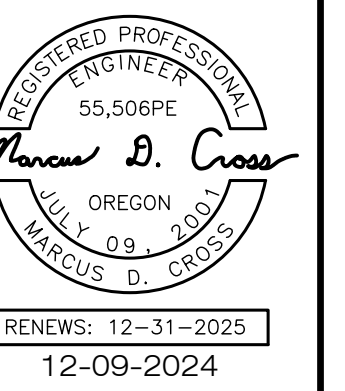


12-09-2024

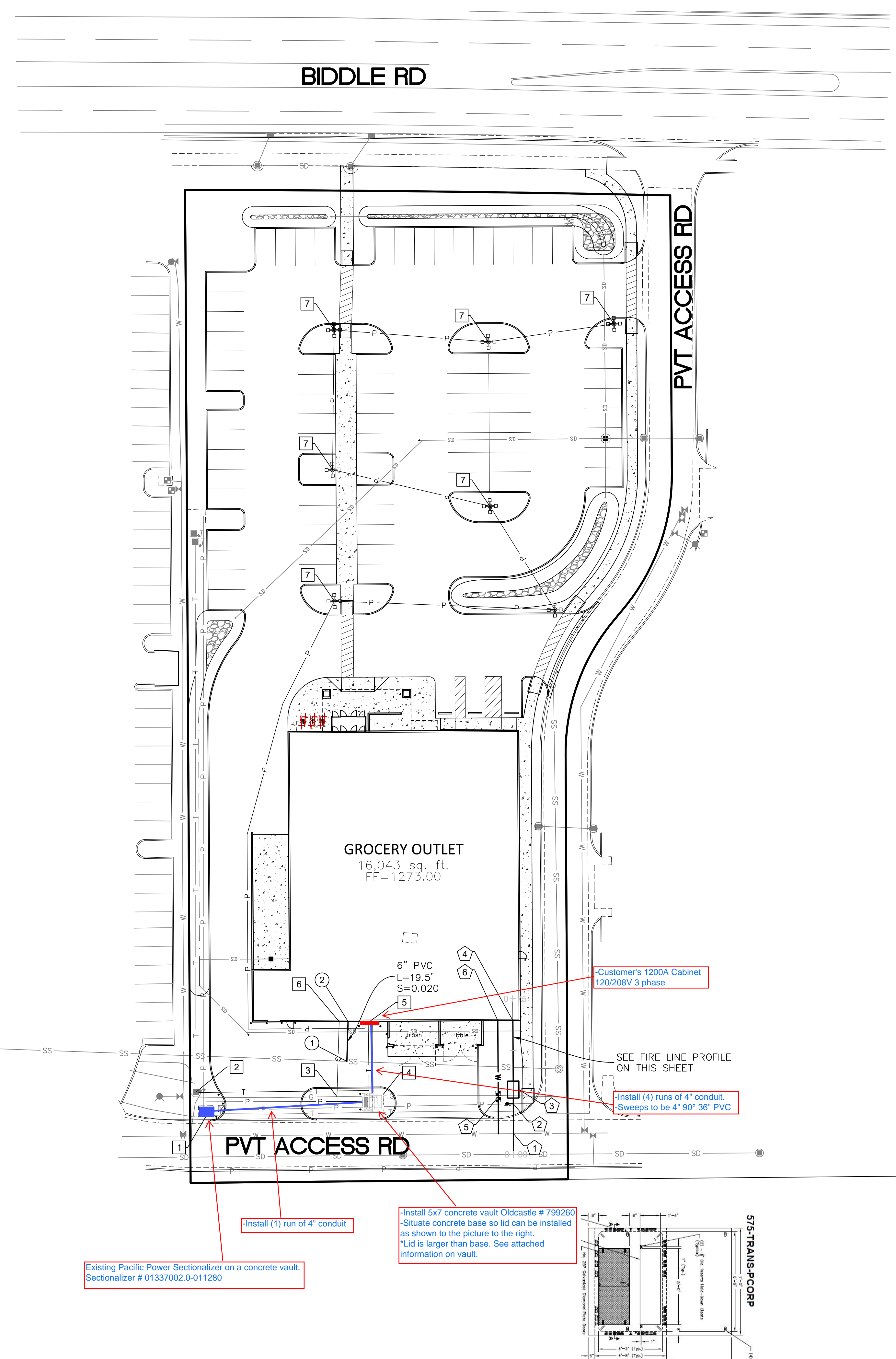
DICKERHOOF PROPERTIES
 P.O. BOX 1583
 CORVALLIS, OR 97339
 (541) 754-3630

RHINE-CROSS GROUP, LLC
 ENGINEERING - SURVEYING - PLANNING
 112 N 5th ST - SUITE 200 - P.O. BOX 909
 CLAMATH FALLS, OREGON 97601
 Phone: (541) 851-9405 Fax: (541) 273-9200
 admin@rc-grp.com



Grocery Outlet
 4951 Biddle Road
 CENTRAL POINT OREGON

SHEET NAME: Utility Plan
 DRAWN BY: TDC
 CHKD BY: MDC
 DATE: DECEMBER 2024
 REVISIONS:
 JOB NO. 2363
 SHEET NO. C2.0



DRY UTILITY CONSTRUCTION NOTES:

- 1 CONNECT TO EXISTING POWER VAULT NUMBER OF CONDUITS & SIZES TO BE DETERMINED BY UTILITY PROVIDER. CONTRACTOR SHALL COORDINATE WORK WITH PACIFIC POWER.
- 2 CONNECT TO EXISTING TELEPHONE RISER. CONTRACTOR SHALL COORDINATE WORK WITH CENTURY LINK.
- 3 CONNECT TO EXISTING GAS LINE. CONTRACTOR SHALL COORDINATE WORK WITH AVISTA.
- 4 INSTALL NEW TRANSFORMER VAULT. COORDINATE INSTALLATION WITH PACIFIC POWER. SIZE AND NUMBER OF CONDUITS TO BE DETERMINED BY UTILITY PROVIDER.
- 5 CONNECT TO BUILDING POWER AND COMMUNICATION. REFERENCE ELECTRICAL PLANS FOR CONTINUATION. ROUTE POWER CONDUIT FROM BUILDING TO SITE LIGHTS AS SHOWN.
- 6 CONNECT GAS LINE TO BUILDING. SIZE OF LINE TO BE DETERMINED BY UTILITY PROVIDER. REFERENCE PLUMBING PLANS FOR CONTINUATION.
- 7 INSTALL LIGHT POLES (7 TOTAL). SEE PLAN VIEW FOR NUMBER OF HEADS

SANITARY & STORM PIPE NOTES:

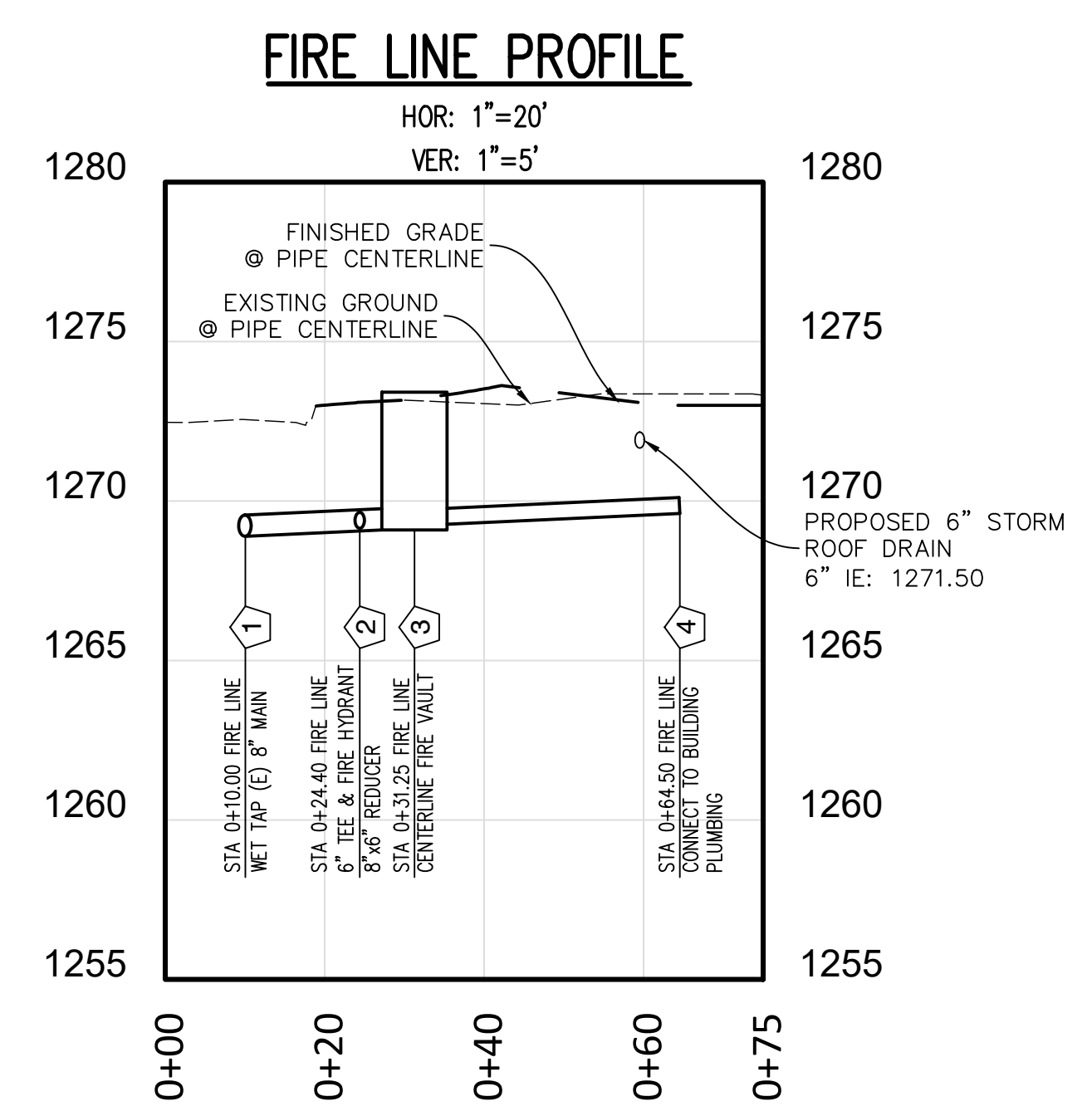
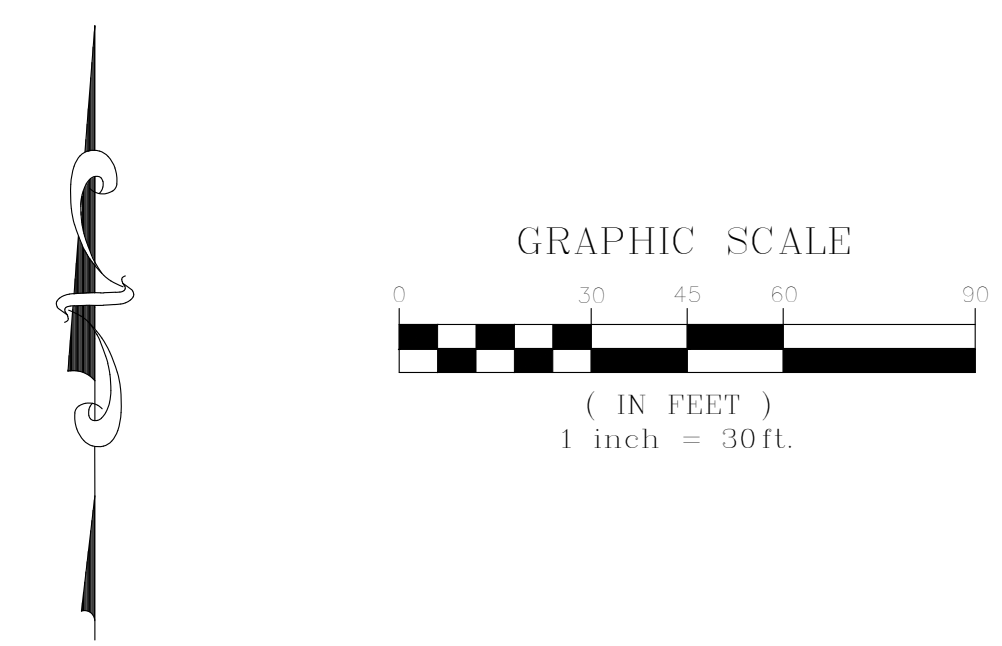
1. STORM PIPE SHALL BE (GPP) CORRUGATED PLASTIC PIPE, HDPE, SMOOTH INTERIOR (ADS OR HANCOR). WITHIN 5' OF BUILDING FOUNDATIONS, PIPE SHALL BE ABS BLACK PLASTIC.
2. CATCH BASINS SHALL BE CONCRETE. ALL CATCH BASINS SHALL HAVE THERMOPLASTIC STENCILS "NO DUMPING - DRAINS TO RIVER" ALL CATCH BASINS TO CONTAIN DEBRIS FILTERS.
3. SEWER PIPE SHALL BE PVC, CLASS 3034, IF NOT SHOWN, MINIMUM SLOPE = 0.25'/FOOT.
4. ALL UTILITY TRENCHES WITHIN PAVED AREAS SHALL BE BACKFILLED WITH 3/4"-0" GRANULAR MATERIAL COMPACTED TO 95% T-99. STREET TRENCHING SHALL BE BACKFILLED PER THE CITY'S STANDARDS.

SANITARY SEWER CONSTRUCTION NOTES:

- 1 CONNECT TO EXISTING 8" SANITARY SEWER MAIN. EXISTING 8" IE: 1264.39± PROPOSED 6" IE (N): 1268.58± INSTALL (2) 6" 45° BENDS FOR VERTICAL RISE.
- 2 CONNECT TO BUILDING SEWER. REFERENCE PLUMBING PLANS FOR CONTINUATION. INSTALL (1) INLINE CLEANOUT AT BUILDING EXTERIOR. RIM: 1273.00 6" IE: 1268.78

WATER CONSTRUCTION NOTES:

- 1 CONNECT TO EXISTING 8" WATER MAIN. INSTALL: (1) 8"x8" D.I. TAPPING SADDLE (1) 8" TAPPING GATE VALVE (1) THRUST BLOCK TAP TO BE PERFORMED BY CITY CREWS. CONTRACTOR SHALL COORDINATE.
- 2 INSTALL: (1) 8"x6" TEE (1) FIRE HYDRANT ASSEMBLY (1) THRUST BLOCK
- 3 INSTALL: (1) 6'x8' FIRE VAULT (1) 6" DOUBLE CHECK DETECTOR ASSEMBLY (DCDA) FEBCO 656ST OR OREGON HEALTH DEPT. APPROVED EQUAL (1) UTILITY VAULT #675-WA (1) FIRE DEPARTMENT CONNECTION
- 4 6" FIRE LINE CONNECTION TO BUILDING REFERENCE FIRE SPRINKLER PLANS FOR CONTINUATION.
- 5 CONNECT TO EXISTING 8" WATER MAIN. CITY CREWS TO INSTALL: (1) 2" DOMESTIC SERVICE LINE AND METER CONTRACTOR TO INSTALL: (1) 2" REDUCED BACKFLOW DEVICE (O.H.D. APPROVED) IN SEPARATE METER BOX SET TO GRADE.
- 6 INSTALL: 2" SERVICE LINE CONNECTION TO BUILDING REFERENCE PLUMBING PLANS FOR CONTINUATION.



Existing Pacific Power Sectionalizer on a concrete vault. Sectionalizer # 01337002.0-011280

-Install (1) run of 4" conduit

-Install 5x7 concrete vault Oldcastle # 799260. Situate concrete base so lid can be installed as shown to the picture to the right. Lid is larger than base. See attached information on vault.

Customer's 1200A Cabinet 120/208V 3 phase

SEE FIRE LINE PROFILE ON THIS SHEET

Install (4) runs of 4" conduit. Sweeps to be 4" 90° 36" PVC

