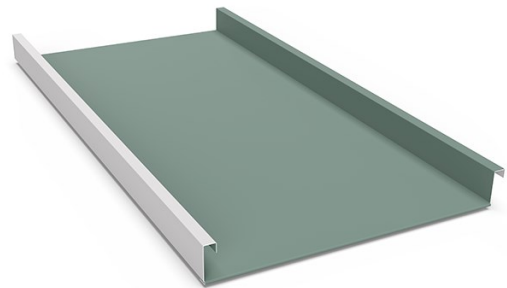
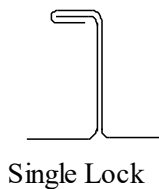
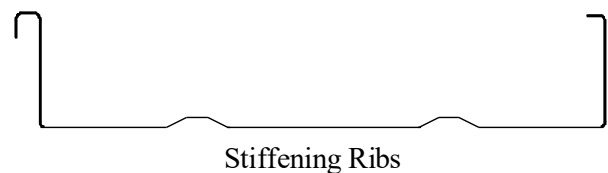
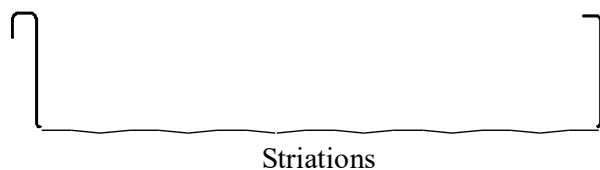
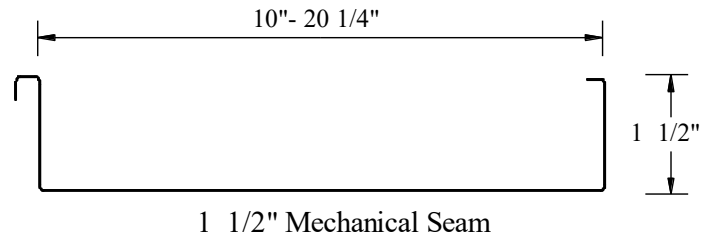


MS150

The MS150 is a double lock mechanical seamed roof system.

The conceal clip and fastener allows for the unlimited thermal movement and resistance to wind uplift.

Panels are designed for application on solid substrate.



- **Optimal Panel Width:** 12 1/4", 16 1/4", 20 1/4"
- **Min. Panel Length:** 2'
- **Max Panel Length:** 45' (Consult SMWA for Field Roll Forming)
- **Min Slope:** 1:12 Solid Substrate
- **Material:** Standard 24 Gauge Steel (Consult SMWA for optional material, gauges and finishes)
- [Color Chart](#)
- **Optional:** striations, stiffening ribs, clip offset