

Land Taking Maps With Scale: page 1

https://www.bedfordma.gov/sites/g/files/vyhlf6866/f/uploads/mmbe_taking_maps_-_aerials_with_areas_-_reduced.pdf

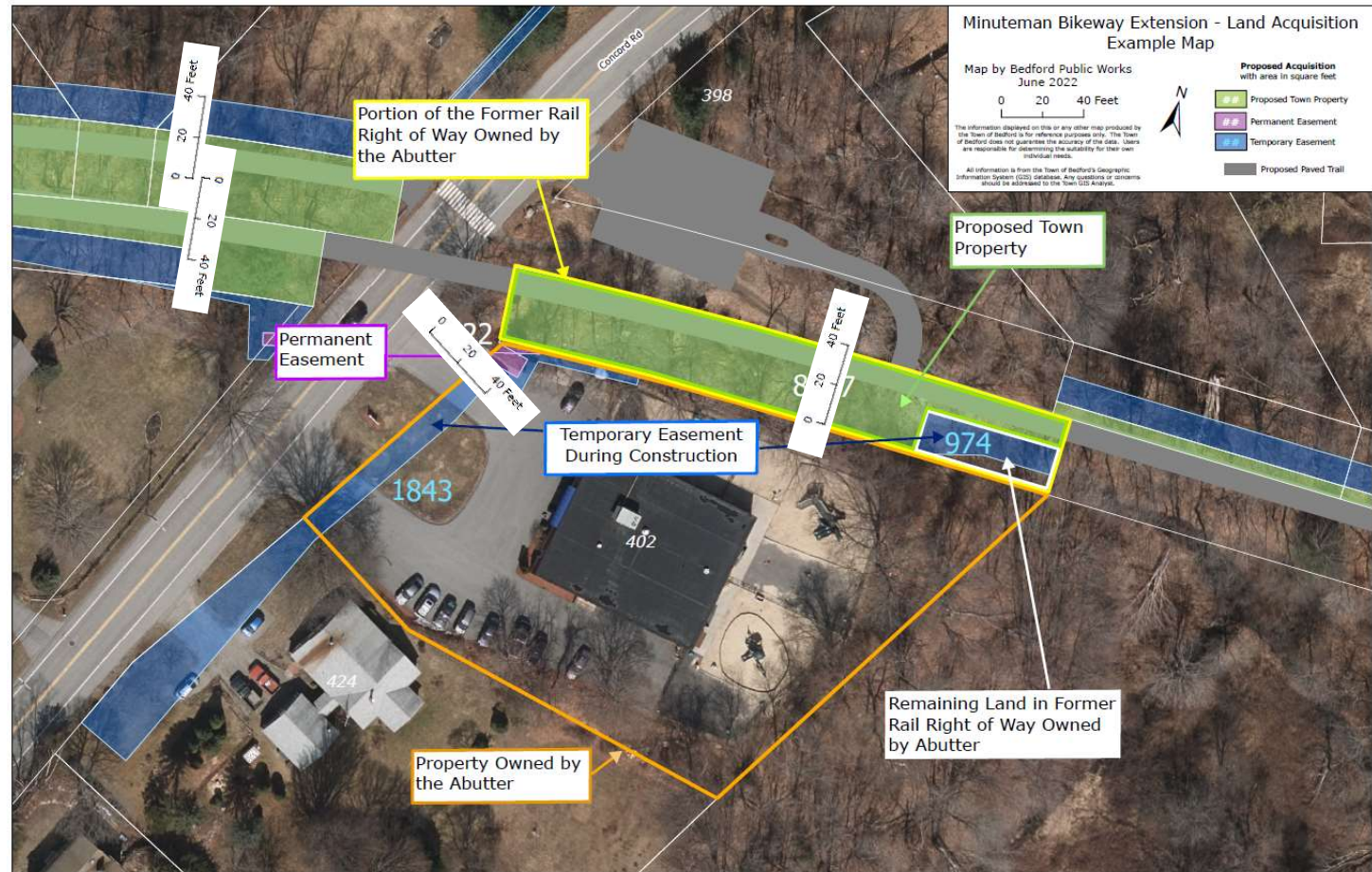
Green: Eminent Domain Parcel.
Town will take this land by force if necessary.

Blue: PROPOSED Temporary Construction Easement: private property that be cleared and used by MassDOT for duration of project.

The final dimensions are not what is shown here. Town documents show that MassDOT (and not the Town) will establish final Temporary Easements during contract negotiations. (1) The Town may not dictate means nor methods to MassDOT. (2)

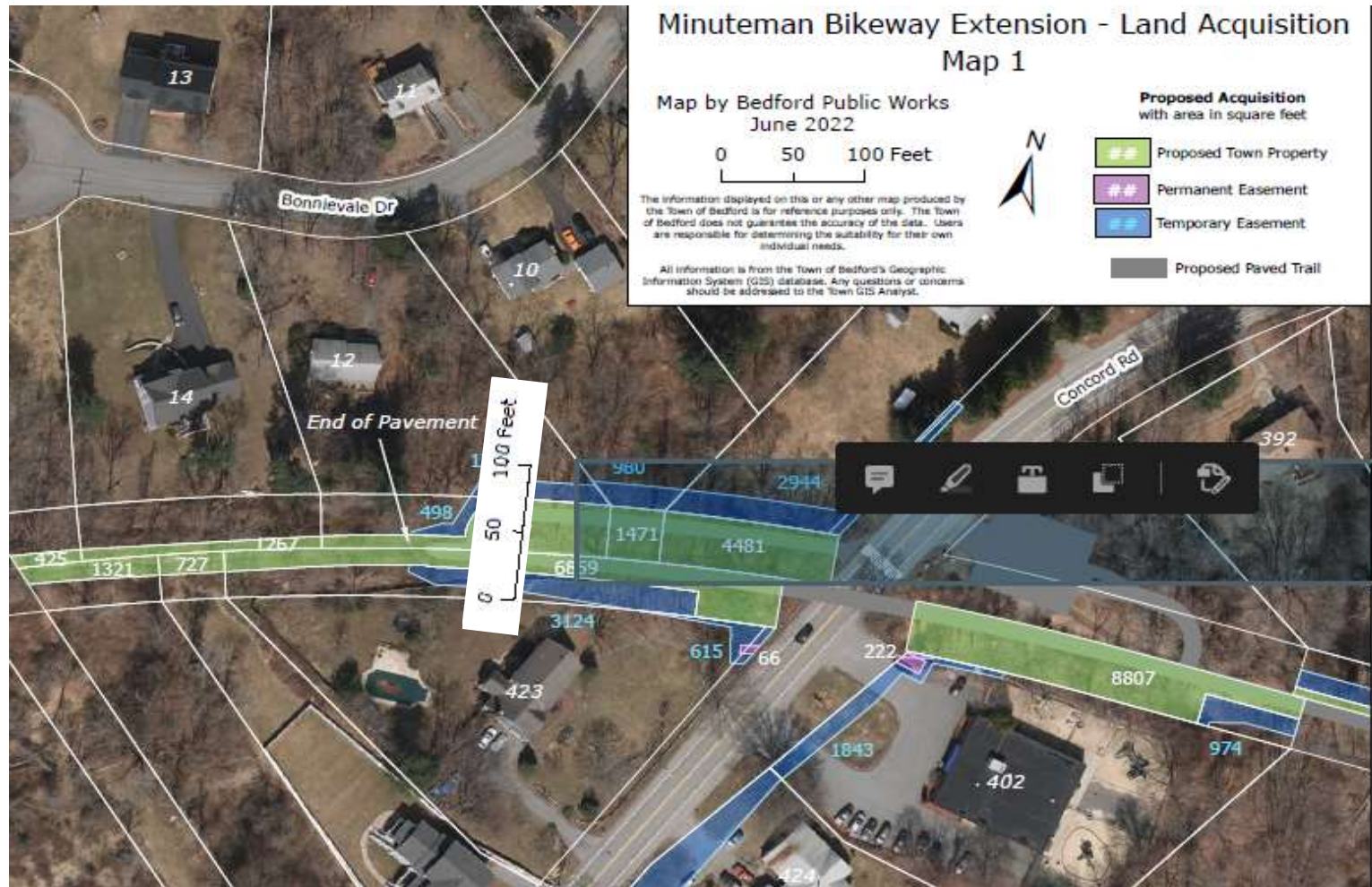
1- https://www.bedfordma.gov/sites/g/files/vyhlf6866/f/uploads/mmbw_extension_tr ee_removal_cover_memo.pdf

(2) https://www.bedfordma.gov/sites/g/files/vyhlf6866/f/uploads/minuteman_bikeway_dph_comment_responses_final_4-9-2020.pdf



Land Taking Maps With Scale: page 2

https://www.bedfordma.gov/sites/g/files/vyhlf6866/f/uploads/mmbe_taking_maps_-_aerials_with_areas_-_reduced.pdf



Land Taking Maps With Scale: page 4

https://www.bedfordma.gov/sites/g/files/vyhlf6866/f/uploads/mmbe_taking_maps_-_aerials_with_areas_-_reduced.pdf

Lavender Lane Parking Lot.
PROPOSED Temporary
Construction Easements
omitted.

See 100% Design for Proposed
Temporary Easements and tree
removal plans. (3)

NOTE: MassDOT will have leave
to remove all trees inside
Easements, regardless of what
the PROP CLEARING & GRUBBING
line shows.

(3)

https://www.bedfordma.gov/sites/g/files/vyhlf6866/f/uploads/100_percent_submission_-_highway_plans.pdf



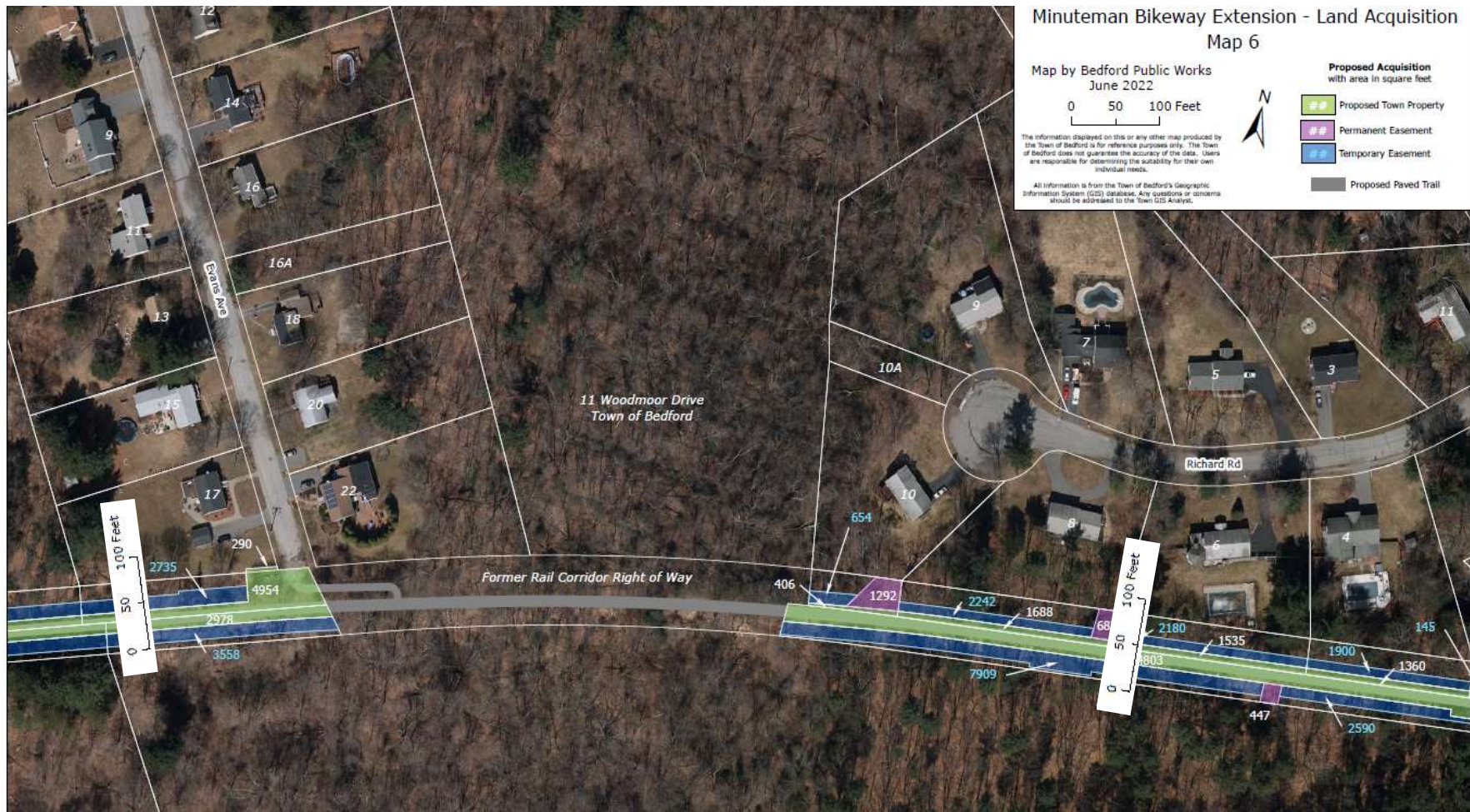
Land Taking Maps With Scale: page 6

https://www.bedfordma.gov/sites/g/files/vyhli6866/f/uploads/mmbe_taking_maps_-_aerials_with_areas_-_reduced.pdf



Land Taking Maps With Scale: page 7

https://www.bedfordma.gov/sites/g/files/vyhlf6866/f/uploads/mmbe_taking_maps_-_aerials_with_areas_-_reduced.pdf



Land Taking Maps With Scale: page 8 -Western End of Railroad Ave.

https://www.bedfordma.gov/sites/g/files/vyhlf6866/f/uploads/mmbe_taking_maps_-_aerials_with_areas_-_reduced.pdf

Closeup of Railroad Ave.
Extension plan.

Make an estimate of land-taking here. You may use a measuring tape to see how much of your neighbors' front yards and places of business will be taken.

Annually, there are 322k+ users on the Minuteman Bikeway. More than 50% of traffic is from weekend recreation. (4). They will be at your neighbors' front doors. Do you wish this on them?

(4)

<https://www.mass.gov/doc/masstrails-shared-use-path-benefits-primer/download>



Land Taking Maps With Scale: page 9

https://www.bedfordma.gov/sites/g/files/vyhlif6866/f/uploads/mmbe_taking_maps_-_aerials_with_areas_-_reduced.pdf

