



# Bel-Esprit Day School

## STATEMENT OF SERVICES

Children must be potty trained for preschool enrollment

Preschool: 3, 4 & 5 Year-Olds & Toddlers: 1 & 2 Year-Olds

*Affordable  
Educational  
Child Care!*

NO REFUNDS GIVEN FOR CURRICULUM FEES, UNIFORM FEES OR PREPAID TUITION

<b>Registration Fee:</b>	<b>\$125 DUE AT ENROLLMENT (Renewed Every Year on Anniversary Date)</b>
<b>Academic Year:</b>	<b>August – May (Aligned with Litchfield Elementary School District Calendar)</b>
<b>Summer Camp/\$40 Registration:</b>	<b>June - July</b>
<b>Preschool Uniform Shirts:</b>	<b>1 for \$22      3 for \$60      5 for \$95      --Uniform shirts are gray polos with embroidered school logo</b>

**\*\* Armed Forces, Licensed Medical Professionals, Public Safety Workers  
10% off any 7-10 month contract rate (must provide ID to receive discount)**

**\*The Registration Fee is due at the time of enrollment and renewed each anniversary. There are no refunds OR credits of Registration Fees if your child withdraws during the academic year or stops attending school.**

**CONTRACTED RATES**

**Preschool Full Day Session:**

	<u>Hours</u>	<u>7-10 Months</u>	<u>3-6 Months</u>	<u>Mo-To-Mo Rate</u>
5 Day Full-Day (12 hrs) <b>Professional Day</b>	6:00 - 6:00	\$775	\$800	\$815
5 Day Full Day (10 hrs) <b>Extended Day</b>	7:00 - 5:30	\$700	\$725	\$740
5 Day Full Day (9.5 hrs) <b>Certified Educator Rate</b>	7:00 - 5:00	\$655		→ August - May
5 Day Full-Day (7 hrs) <b>School Day</b>	*8:00 - 3:30	\$675	\$700	\$715
3 Day Full-Day (12 hrs) <b>M, W, F</b>	6:00 - 5:30	\$570	\$595	\$610
2 Day Full-Day (12 hrs) <b>T, Th</b>	6:00 - 5:30	\$520	\$540	\$555

**\*\* Kinder Prep:** additional class for enrolled students graduating to kindergarten at the end of the academic year- \$30/MO or \$250 prepaid \* ask about sibling rate

**Preschool Half Day Session:**

5 Day Half-Day (3.5 hrs) <b>M-F</b>	8:00-11:30	\$470	\$500	\$520
3 Day Half-Day (3.5 hrs) <b>M, W, F</b>	8:00-11:30	\$420	\$455	\$475
2 Day Half-Day (3.5 hrs) <b>T, Th</b>	8:00-11:30	\$340	\$375	\$405

Tuition is based on an annual amount per number of academic days in the school year & divided into equal monthly payments. Tuition amounts do not include intercessions or holidays.

- ❖ School day promptly begins at 8:30 AM
- ❖ 8:00 AM start times can drop off beginning at 7:55 AM\* - - Earlier drops will be charged \$1/minute
- ❖ Tuition is due ON OR BEFORE the 1<sup>st</sup> & 15<sup>th</sup> BY 9:00 AM regardless of holidays, intercessions or weekends – **CASH OR CHECK ONLY**
- ❖ M-F Sibling Rate: PRESCHOOL ONLY \$675 per child/mo M-F 7:00am-5:00pm OR Standard Price 1<sup>st</sup> Child 5% OFF 2<sup>nd</sup> Child 6:00-6:00
- ❖ M-F Sibling Rate: (Preschool/Toddler) \$680 Preschool Child & \$775 Toddler Child M-F 7:00am-5:00pm OR Standard Price 1<sup>st</sup> Child 5% OFF 2<sup>nd</sup> Child 6:00-6:00



# 1 & 2 Year-Olds Room

**Registration Fee: \$125**

## 5 Day Full Day

\$850 or \$800 contract rate

## 3 Day Full Day

\$750 or \$700 contract rate

## 2 Day Full Day

6:30AM-5:30 PM

\$650 or \$600 contract rate

## 5 Day Half Day

\$650 or \$600 contract rate

## 3 Day Half Day

\$550 or \$600 contract rate

## 2 Day Half Day

Up to 4 hours

\$450 or \$400 contract rate

\*\*Ask front desk for special educator preschool/toddler room combination pricing

DISCOUNTS CANNOT BE COMBINED WITH OTHER SPECIAL OFFERS/PRICING

**NO UNIFORMS!**

### What You Must Provide:

- ❖ **Crib Sheet & Nap Blanket**
- ❖ **Diapers, Wipes & Creams**
- ❖ **2 Changes of Clothing**
- ❖ **Packed Lunch -- Daily**
- ❖ **Sippy Cup For Class**  
\*\*This cup will stay at school & be used for water only in the classroom
- ❖ **Sippy Cup For Lunch**  
\*\* This cup should be packed with your child's lunch everyday - please include drink
- ❖ **School Provides Snacks**

## 60 Minutes Before or After Care:

Minutes can be applied however needed to enrollment plan.

- \$20 MONTH/1 day per week
- \$30 MONTH/2 days per week
- \$40 MONTH/3 days per week
- \$50 MONTH/4 days per week
- \$60 MONTH/5 days per week

## Hours A La Carte:

Must be arranged 24 hours in advance or standard late pick-up fees will apply.

- \$20 per 1 hour
- \$10 per 1/2 hour

## Summer Camp for School-Agers: (Kinder through 4<sup>th</sup> graders)

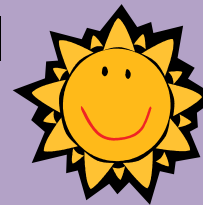
Hours of Operation: 7:00-5:30 PM – Tuition includes 2 snacks;

you must pack a lunch for full-day attendance

**REGISTRATION FEE** \$50

5 Day Full-Day	\$650/MO	5 Day Half-Day	\$450/MO
4 Day Full-Day	\$600/MO	4 Day Half-Day	\$425/MO
3 Day Full-Day	\$550/MO	3 Day Half-Day	\$400/MO
2 Day Full-Day	\$500/MO	2 Day Half-Day	\$350/MO

**NO UNIFORMS!**



## Lead Educator on Staff

(Minimum Bachelor's Degree & State Certified)  
 State Licensed Facility  
 Small Classrooms: 13:1 Ratios  
 Literacy Rich Environments  
 Integrated Thematic Instruction

**AFFORDABLE  
EDUCATIONAL  
CARE**

## Drop-In Days/Monthly Prorated Rates:

- \$40/up to 4 hrs (any ½ day between 7:30AM to 5:30 PM)
- \$60/up to 4.5-8 hrs (any full day between 7:30 AM to 5:30 PM)
- \$65/up to 8.5-12 hrs OR any drop off before 7:00 AM or any pick up after 5:30 PM

Reservation required for guaranteed availability.

Drop-in's based on availability. \$10 off for sibling.

## **Bel-Esprit Day School**

@ Palm Valley Pavilions  
 1375 N. Litchfield Rd. #104  
 Goodyear, AZ 85395

# 623-536-6600

www.beday.school.com  
 info@belespritdayschool.com

**Like us on Facebook**  
 Bel-Esprit Day School  
 Education