

# Williams County Fair



Sept. 11 - 18, 2021





**Pence's**  
CONCESSIONS



**The  
WILLIAMS COUNTY FAIR**

September 11th to the 18th, 2021  
619 East Main Street • Montpelier, OH 43543

Fair Office 419-485-3755

Ticket Office 419-485-4456

Fax 419-485-1324

Website - [www.wcofair.com](http://www.wcofair.com)

Email - [office@wcofair.com](mailto:office@wcofair.com)

**Daily Fair Gates**

**Saturday - Saturday (9/11 to 9/18) open 9am**

**Admission Prices**

**Daily Adult Admission \$5.00**  
**Children age 12 and under FREE**  
**Adult Season Pass \$20.00**  
**Student Season Pass \$10.00**  
**Ag. Society Membership \$1.00**



**WELCOME MESSAGE FROM THE PRESIDENT - Matthew Kennedy**

Welcome to the 2021 Williams County Fair!!! We are back in full force after restrictions forced us into a Junior Fair only in 2020 and I couldn't be more excited to get back to as normal as possible. I personally invite everyone to come and take part in all aspects of the fair. Enjoy the food, livestock shows, free midway concerts and entertainment on a nightly basis, as well as our grandstand events which will include Truck Pulls on the last Saturday this year. Please be sure to stop and thank all the volunteers who work tirelessly to help put on a safe and successful fair. My personal thanks go out to the 4-H and FFA Advisors, Williams County Dairy Producers Association, Williams County Beef Producers, Williams County Pork Producers, the parents of our Junior Fair exhibitors, OSU Extension staff, and our Junior & Senior Fair Board staff.

**COME ONE, COME ALL TO THE 2021 WILLIAMS COUNTY FAIR**





Row 1—Dave Page, Matt Kennedy, Danyel Wortkoetter. Row 2— Loretta Burkhart, Pam Goll, Summer Owens. Row 3— Alex Baker, Sam Farmer, Tobi Fenicle, Jason Fry, Joe Winebernner. Not pictured— Scott Carroll, Chad Carroll, Tom Fry, Josh Mercer, Tim Belding.

**NOTICE**  
**WE ARE NOT RESPONSIBLE FOR THEFT OR DAMAGE TO VEHICLES OR CONTENTS**  
**PARK AT YOUR OWN RISK**

***Williams County Fair Board Policies***

*The Williams County Agricultural Society has adopted the following Policies for the betterment of the fair and the organization as a whole. Copies are available at the Fair Office for the public. Thank you.*

- Code of Conduct
  - Code of Ethics
  - Conflict of Interest
  - Background Checks
  - Record Retention
  - Whistle Blower
  - Alcohol
  - Open Records Request
  - Equipment Operations
  - Auxiliary Directors
- And other minor operational policies.



**PROUD MEMBERS OF THE OHIO FAIR MANAGERS ASSOCIATION**



# Edgerton Forge

257 East Morrison  
Edgerton, Ohio 43517  
(419) 298-2333



## THE OHIO STATE UNIVERSITY

COLLEGE OF FOOD, AGRICULTURAL,  
AND ENVIRONMENTAL SCIENCES

**Stacey Perry, M.A.**  
Extension Education  
4-H Youth Development  
OSU Extension Williams County

**Stephanie Karhoff**  
Extension Educator  
Agriculture and Natural Resources  
OSU Extension Williams County

# SPECIAL THANKS

Williams County Pork Producers  
Williams County Beef Producers  
Williams County Dairy Association  
Williams County Horseman Association  
Williams County Jr. Fair Board Parents  
Williams County Jr. Fair Board Members  
Williams County Sr. Fair Board Spouses  
Williams County Commissioners  
Williams County OSU Extension Office  
Williams County 4H Advisors  
Williams County 4H Students  
Williams County FFA Groups  
Williams County 4H Advisory Council  
Pete's Posey Patch  
Crista Wortkoetter (2016 Williams County  
Fair Queen, 2017 Ohio Fairs' Queen)  
A Stitch in Time  
Wieland Auto Repair  
Heller Creations and Modifications  
Crista's Care Packages  
Shultz Huber & Assoc.  
A.J. Door  
Edgerton Forge, Inc.

*Heartfelt thanks to the sponsors,  
donors and supporters of the Wil-  
liams County Fair. You're the key  
to our success for the 4H/FFA  
Youth of this county!*





**BECOMING A CANDIDATE**

- Be a citizen of Williams County
- Be a member of the Ag. Society (\$1.00 fee)
- Submit 2 character references
- Complete 10 hours of volunteer service at the previous fair
- Attend a minimum of 3 Fair Board Meetings prior to August 19, 2021
- Complete a BCI background check
- Pull & file a petition for an open seat with 10 Ag Society member signatures

ALL petitions must be filed with the Secretary no later than 6PM on August 19, 2021 to be considered valid.

Stop at the office and get a Candidate Packet today!

**2021 Board of Directors Elections**

**Open Seats of the Board for 2021**

**Open Seats of the Board for voting on Sept. 13, 2021**

**For a full 3 year term expiring in 2024**

Seat	Encumbent
Edgerton	Jason Fry
Bridgewater Township	Tobi Fenicle
Madison Township	Open
Brady Township	Matt Kennedy
Florence Township	Josh Mercer
St. Joseph Township	Open
District 3	Pam Goll
Member @ Large 4	Tom Fry

**For a 2 year term expiring in 2023**

Seat	Encumbent
Jefferson Township	Open
Pulaski Township	Open
District 2	Open
Montpelier	Open
Member @ Large 2	Open
Member @ Large 3	Open

For a 1 year term expiring in 2022

Seat	Encumbent
Superior Township	Open
Center Township	Open
Edon	Open
Pioneer	Open

**Be sure to stop an Auxiliary Director and thank them!**  
 Serving both at the fair, the board room and working with the Directors, these talented friends had a passion to test the water for joining through the Auxiliary. We are fortunate to have such amazing and passionate people here in Williams County!

**Loretta Burkhart**

**Chad Carroll**

**GET INVOLVED**  
**Make a Difference!**





**ROLL OFF DUMPSTERS • BULK MULCH**

Cleaning out? Roof Project? Home Improvement?



**Delivery & Pick-Up**  
20 to 40 yard containers



**We Make Colored Mulch**

Recycle your material from the next project.  
**We Accept • Concrete, Brush, Pallets, Building Materials & Fixtures • Charges May Apply**

**CRUSHED & SCREENED CONCRETE / ASPHALT**

**Check out our Warehouse**  
**Full of Salvage Items**

- Doors • Windows • Cabinets
- Bathroom Fixtures • Electrical
- Architectural
- Lots of Treasures...



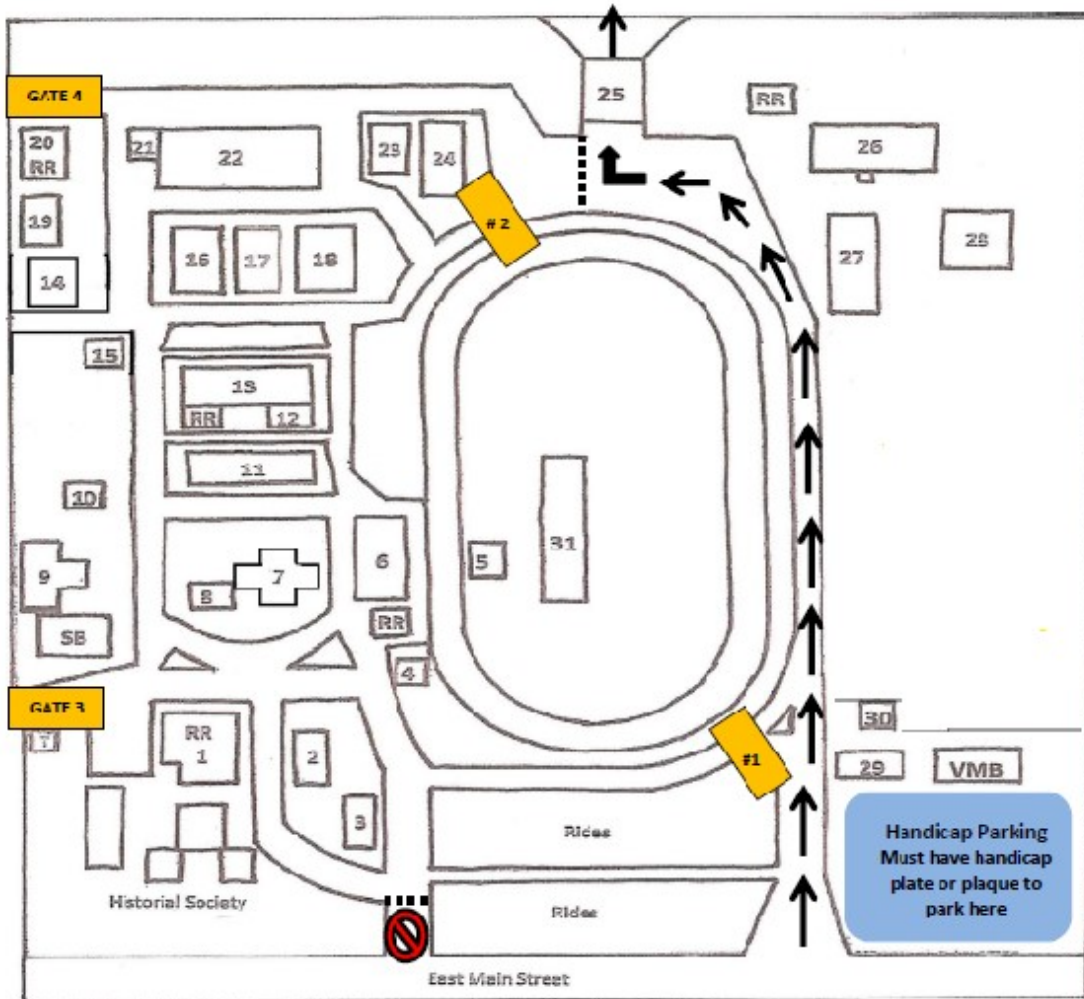





**4103 Cty. Rd. 15D, Bryan, Ohio. • 419-636-1460**  
**E-mail office@oberlindemo.com • www.oberlindemo.com**

## 2021 Master Fairgrounds Map

General Parking North of the Bridge - All traffic must exit to County Road M. - No southbound traffic on the bridge



1. Fair Board Office
  2. Activities Shelter
  3. Sheriff's Office
  4. Pork Producers Stand
  5. Event Stage
  6. Grandstands
  7. Merchant Building
  8. Beef Producers Stand
  9. Rural Building
  10. Dairy Producers Stand
  11. 4H Building
  12. Antique Building
  13. Gillette Building
  14. Goat Barn
  15. Jr. Fair Board Office
  16. Cattle Barn
  17. Dairy & Sheep Barn
  18. Swine Barn
  19. Rabbits Barn
  20. Livestock Office
  21. Milk Parlor
  22. Livestock Show Arena
  23. Poultry Barn
  24. Pony Barn
  25. Covered Bridge
  26. Horse Arena
  27. Horse Barn
  28. Practice Arena
  29. Maintenance Barn
  30. Speed Office
  31. Pulling Track
- RR = Rest Rooms  
SB = Safety Building

## LIVESTOCK MOVE-IN DAY FRIDAY SEPT. 10th, 2021

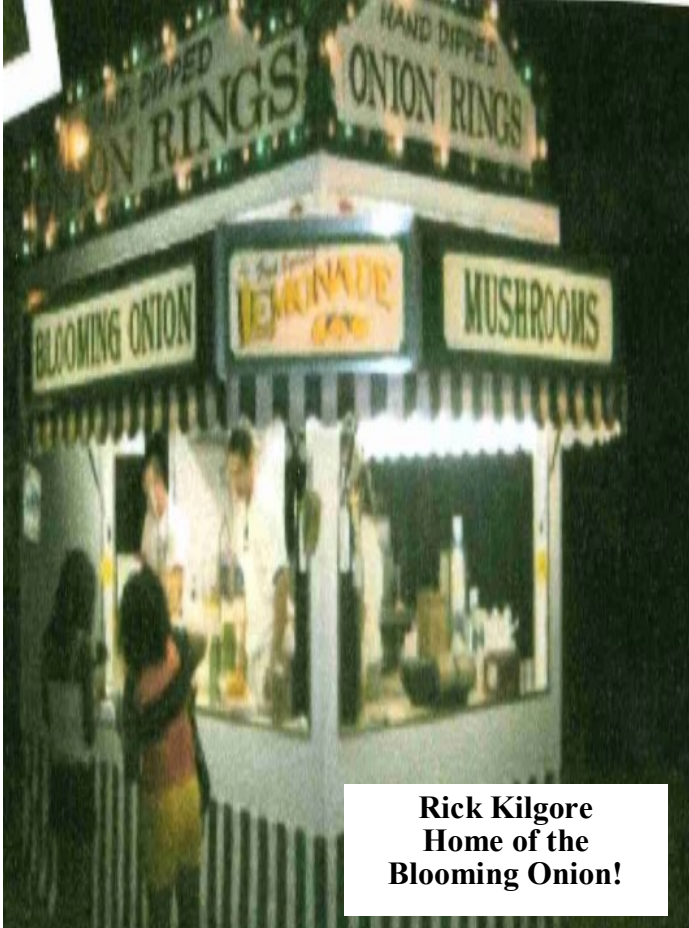
Animals **MUST** be weighed in upon arrival to the fairgrounds.  
 Beef/Sheep/Goats - weighed at the show pavilion.  
 Swine - weighed at the swine barn (unload in the wash rack)  
 Poultry/Rabbits - weighed in at the poultry and rabbit barn.  
 DUNF Forms must be turned in at the scales to be weighed.

### Show Numbers

All livestock exhibitors need to stop by the Jr. Fairboard Office to pick up their show numbers once they have checked in their animal (s) into the barns. They will have until close of business on the first Saturday of the fair to pick-up their show numbers. Business hours will be posted in the Jr. Fair Office and shared ahead of time for exhibitors.




  
 Thank You! Thank You! Thank You!
   
*Be sure to support our advertisers and sponsors!*



**Rick Kilgore**  
**Home of the**  
**Blooming Onion!**



**Superior Farm Supply**  
**13080 State Route 107**  
**Montpelier, OH 43543**  
**419.485.8351**



<h1>A.J. DOOR</h1>	
<p>             107 Linden Dr. • West Unity, OH 43570              419-924-5533 • Email <a href="mailto:ajdoor@frontier.com">ajdoor@frontier.com</a>  <i>"Your Garage Door is OUR Business"</i> </p>	

# SATURDAY SEPTEMBER 11th

## OPENING DAY & Veterans Day

### Junior Fair Schedule

- 8:30 am Horse Showmanship & Pleasure Class @ the horse arena
- 9:30 am Goat Show @ the Show Pavilion
- 10:00 am FFA Crop Projects to be in place at the Gillette Building
- 1:00 pm Poultry Show @ the Show Pavilion

### Senior Fair Schedule

- 9:00 am Admission Gates Open - Adults \$5 12 & under Free
- All Day Veteran's Day - Free Admission for Veteran's & Active Duty Service members.
- 8:00 am Opening Ceremony @ the Show Pavilion
- 9:00 am US Flag Raising Ceremony @ the infield
- 9:00 am 9/11 Stair Climb and 5K @ Grandstands
- 12:00 pm 9/11 Event @ Safety Building
- 12:00 pm Flower Show Judging @ the Gillette Building
- 2:00 pm Horticultural Judging @ the Gillette Building
- 5:00 pm King & Queen Coronation @ North Entertainment Stage
- 5:00 pm Open ARBA Rabbit Show @ Show Pavillion
- 7:00 pm Pete Schlegel @ Grandstand
- 9:00 pm Admission Gates close



### OPENING CEREMONIES

In the Show Pavilion  
8:00am

*The Junior Fair Members & Senior Fair Directors invite you to join us for opening remarks, the 4H pledge, FFA creed and American Flag pledge kicking off the Fair.*

*Thank You for your Support*



**RIDIN', ROCKIN' and LIVESTOCKIN'**

### FLAG RAISING CEREMONY

9:00 am on the infield

Join us as we support the Montpelier VFW Post raise our American Flag to welcome the 2020 Williams Co. Fair

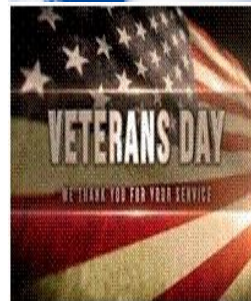


### VETERANS DAY

**Free Admission All Day**

All Veterans & Active Duty personnel with ID will be given free admission all day.

*Thank you for your service*





## Entertainment Stage Schedule

**Williams County Royalty**  
*King & Queen Coronation*  
5:00 PM  
Entertainment Stage  
(north side of the Gillette Building)



Queen Contestants:  
Makinzy King, Hannah Missler, Heavenlee Owens



King Contestants:  
Gage Winebernner and Nathan Herman



Princess Contestants:  
Gracie Hardin, Autumn Owens, Kirian Mercer, and Katie Dorsten

# SUNDAY SEPTEMBER 13th

## Junior Fair Schedule

- 9:00 am Swine Show @ the Show Pavilion
- 10:30 am Horse Show @ the Horse Arena (Gymkhana)  
Versatility Class begins 30 min. after conclusion of the Gymkhana events @ the Horse Arena
- 7:00 pm Junior Fair Board Fun Night @ Grandstands



**New for 2021**  
**Junior Fairboard**  
**Hosted**  
**Fun Night Events**  
 Sunday September 12, 2021  
 Beginning at 7:00 P.M  
 In Front of the Grandstands

**Hay Bale Hauling (Truck)**  
  
**Outhouse Race**  
  
**Round Bale Race**  
  
**Straw Bale Pyramid Stacking**  


**CASH Payouts to 1st / 2nd / 3rd Place Winners**  
 Rules and Registration Information can be found on Williams County Junior Fairboard FACEBOOK page / at the Fair Office or email to [williamscojrfairboard@gmail.com](mailto:williamscojrfairboard@gmail.com)

**Williams County Fair Ticket Office**  
 Open Daily 9am until 8pm  
**Selling Reserved Seating Grandstand Tickets for;**  
**Demo Derby**  
 Don't miss your seat ~ Buy early



**Annual Kid's Fishing Derby**  
 4:00 pm to 600 pm  
 Children ages 5 to 12  
 At the pond on the North Campus just past the campgrounds.

**Rules;**

- 1.) All children must be accompanied by an adult to fish.
  - 2.) All participants must pay entry fee of \$1.00
  - 3.) Fishing poles and bait are available if you don't have one.
  - 4.) WCAS is not responsible for accidents
- PRIZES ~ Biggest catch of the day and for most fish caught!**  
 Superintendent: Scott Carroll

## Senior Fair Schedule

- 9:00 am Admission Gates Open - Adults \$5 12 & under Free
- 11:00 am Horse Pulls @ Grandstands
- 4:00 pm Kids Fishing Derby @ the Pond
- 7:00 pm Jess Kelly Adams - Entertainment Stage
- 9:00 pm Admission Gates close



*Presented by Williams County FFA Chapters and sponsored by the Commodity Groups*

**Sunday ~ September 12th ~ 5PM**  
**East Side Show Pavilion**

**Species to be judged**

- Beef Steers
- Dairy Cows
- Market Swine
- Market Lambs
- Market Goats

**2 Divisions to Enter**

- Jr. Division  
13 and Under
- Sr. Division  
14 and Older

Contestants will compete individually, however, teams consisting of three people may be selected prior to the competition for a team score. Sign-Ups will be posted at the announcers stand in the show pavilion Friday 9/10 through Sunday 9/12. Prizes will be awarded to the 1st place team and the top 3 placing individuals in each division. Results will be posted Monday 9/13 and winners awarded at the Showman Sweepstakes on Wednesday 9/15.

## Entertainment Stage Schedule



**Jess Kellie Adams**  
*Saving Grace*

Jess Kellie Adams @ 7:00 pm

Event Contact is Katie Fry - (419) 572-6171



## Camping at the FAIR

Superintendent: Matt Kennedy

Folks don't miss the chance to make more memories by joining in the fun of camping at the Fair! We offer 10 days (Sept. 11—20) for the exciting value of \$150.00. Each site is set up for water and electric hook-up. Our sites are 25' x 55'. Maybe all 10 days doesn't fit your schedule....join us for a couple days with our day sites for the price of \$20.00 per night. We take reservations until all sites are filled. Your reservation must be paid in full by Labor day to be guaranteed previous years site.

Call the office at 419-485-3755

Or Matt Kennedy at 419-630-3978

We look forward to camping with you this year!



## Fair Shuttle Operations

Superintendent: Tim Belding

The Board is pleased to provide shuttle services to and from our general parking and the admission gate. The tractor shuttles are donated by our partners and operated by volunteers. All guests are asked to be observant and aware while loading, unload and walking around the shuttles. We also offer golf cart shuttles from the Veterans lot to the fair for our guest who require it. A midway shuttle will assist guests who need a ride from the Fair Board Office to the Livestock Barns.

## UTV/Golf Cart Policy

UTV or Golf Cart is permitted on the Fair Grounds without a permit. Driver assumes full liability and will operate the UTV \ Golf Cart in a safe and responsible manner. Violations of the policy will be cause to have your unit removed from the grounds by security & Sheriff's Office.

## Towing Policy

The Williams County Sr. Fairboard reserve the right to have any vehicle towed that obstructs safe fair operations, blocks a fire lane and or is illegally parked. Expenses related to having a vehicle towed from the fair is the sole responsibility of the owner of the vehicle. Please observe all signage which is placed for your benefit and the safety of our guests.

## Admission Gates

Superintendent: Tom Fry

Daily admission gates are operated by the fair via our wonderful volunteers who are working to earn money for their non-profit group. Please remember that they are volunteers and respect them. If you have a complaint about gate operations, contact Tom.

## Fair Parking & Exiting the Fair

Superintendent: Tom Fry

Free Parking—follow the signage and cross our bridge to the general parking area. ALL vehicles on the North side of the bridge MUST exit onto County Road M. Our bridge is 1 way traffic for vehicles. All parking at the fair is done at the owners own risk. We are not responsible for vehicles damaged or broken into.

## Fair Safety & Security

Superintendent: Tom Fry

Welcome to the 2021 Williams County Fair. The committee is proud to continue its partnership with our EMS Director, EMA Director, Sheriff and County Fire Chiefs to provide a safe and fun week at the Fair. While fire protection and medical care is provided at the Fair Grounds Safety building next to Gate 3, should you need assistance call 911 and give your location on the fairgrounds and dispatchers will direct emergency providers to you.

Security is paramount along side safety of our fair guests. We ask that you abide by all rules and policies established by the Board. Sheriff Kochert and his deputies will assist in the enforcement of these and should the need arise escort any person who needs to be removed for the safety of other guests. Signage and barricades are put in place for the most effective flow of traffic, read and follow those as well as the deputies working our parking areas.

## Fair Pets Policy

Registered service animals are the only personal pets allowed on the Fair midway. Additionally, the Fair prohibits leaving any pets unattended in a vehicle in any fair parking areas. Those who violate this policy will be asked to leave.

## Merchants, Vendors, Rides & Tents

Superintendents: David Page

The Williams County Fair offers unique opportunities to various organizations, groups and business as we are home to 50,000 fair guests over the 8 days. There is standard booths for \$175 inside buildings as well as the tent spots also. Contact Dave to secure a spot at this our fair.

We welcome Poor Jack Amusements back this year and we encourage anyone with constructive feedback or comments to reach out to the committee members. Thank you for your continued support of the Fair!

Thank You for your Support!!

# MONDAY SEPTEMBER 13th

## KIDS DAY AT THE FAIR

### Junior Fair Schedule

8:30 am Sheep Show @ the Show Pavilion  
 2:00 pm Beef Show @ the Show Pavilion  
 3:00 pm Jr. Horse Team Tournament @ the Horse Arena  
 \*\*This event is open to any Jr. Fair horse exhibitor.

### Senior Fair Schedule

9:00 am Admission Gates Open - Adults \$5 12 & under Free  
 Kids Day - Age 18 and under are free until 3PM  
 9 - 11 am Fire Safety House @ the Safety Building  
 11:30 am Kids Coin Find @ the Chirra Pavilion  
 12:30 pm Kids Tractor Races @ the Chirra Pavilion  
 2:30 pm Kids Pedal Pull Registration @ the Chirra Pavilion  
 3:00 pm Kids Pedal Pull Contest Starts @ the Chirra Pavilion  
 5:30 pm Bike Give-Away @ the Entertainment Stage  
 7:00 pm All County Band Show @ the Grandstands  
 9:00 pm Admission Gates close

### Entertainment Stage Schedule

Magic Show @ 7:00 pm



### Kids Day Events

Superintendent: Scott Carroll

**Everyone age 17 and under is FREE admission at the Fair until 3:00 PM**

9:00 am till 11:00 am  
 Fire Safety House @ the Safety Building. Meet real fire fighters and learn about fire prevention and safety. Thanks to the Williams County Fireman's Association.



11:30 am  
 Coin Find Contest at the Chirra Pavilion. Children ages 3 to 10 are eligible to participate in this fun event as they hunt for the coins hidden in the sawdust! Keep what you find. Age groups will be separated and registration begins at 11:30 am at the Pavilion.



12:30 am  
 Child Tractor Races! We provide the space and the tractor you bring the driver. Ages Groups are split between the boys and girls into classes. Class 1 is K through 1st grade. Class 2 is 2nd through 3rd grade. Class 3 is 4th through 5th grade. Trophies for 1st and 2nd place. Registration is a \$1.00 fee. Join us at the Chirra Pavilion for the racing fun.



2:30 pm  
 The famous Kids Pedal Pull Contest at the Fair. Registration opens at 2:30 pm at the Chirra Pavilion with the Pulls Starting at 3:00 pm. See the rules below. There is a \$1.00 entry fee. We furnish the pedal tractor and separate the boys from girls into classes. Judges ruling is final. The 1st and 2nd place winners of each class get a trophy.



**RULES;**

- 1.) Contestant must be able to pedal the tractor without help.
- 2.) No jerking and you get 2 chances to pull to the 4 foot mark.
- 3.) Contestants must wear shoes. No flip flops or sandals.
- 4.) Twice off the tractor ends the pull and measurement taken.
- 5.) Due to liability, all participants

must have a signed waiver by a parent or legal guardian to register.  
 Most importantly ~ HAVE FUN AND BE A GOOD SPORT!



## All County Band Show

**Monday - Sept. 13 @ 7:00PM in the Grandstands**

Superintendent: Danyel Wortkoetter

**General Admission Seating \$2.00  
Children 5yrs and under FREE**



*Come join us as we are entertained by the musical talents of our fine youth from within each School District in Williams County at the "All County Band Show". Every year the band directors spend hours working with these young musicians and put on an amazing show that includes musical talents and competition. Show your school spirit and pride by cheering for your group as they impress us again this year! A special thanks to each of the Schools for their participation.*

## KIDS BIKE GIVEAWAY



**2021  
Bike Giveaway  
Entertainment Stage  
5:30PM**

**Tickets must be turned in at the Fair Office by 5PM on Monday 9/13 to be eligible.**

Every year we partner with sponsors, local business and merchant/vendors to host our annual bike giveaway. So many lucky children from all over our county have the opportunity to win a new bike!

**RULES;**

- 1.) Must be present to win
  - 2.) Tickets must be placed in the can in the fair office by 5PM
  - 3.) Ticket back must have the child's name written on it.
- Good luck to all the participants and a huge **THANK YOU** to our wonderful donors who make this event a success every year!

***Best wish to all the 4H & FFA youth exhibitors!***

**TUESDAY SEPTEMBER 14th**

**SENIOR & DISABILITY Awareness DAY**

**Junior Fair Schedule**

- 900 am Dairy Show @ the Show Pavilion
- 12:00 pm Rabbit Show @ the Show Pavilion



*In recognition of Senior Day the Fair Board Directors extend a special invite of those 65 years and older to enjoy free admissions today from 9:00 am to 3:00 pm*

**Senior Fair Schedule**

- 9:00 am Admission Gates Open - Adults \$5 12 & under Free
- 9a - 3p Senior Day - Seniors free admission (65 yrs and older)
- 9a - 3p Disability Awareness Day - free admission for those with disabilities
- 2p - 9p Barnyard Friends @ the Dairy Barn
- 5:00 pm Grandstand Opens for seating
- 6:00 pm MAIN EVENT - Cheer Off Competition
- 9:00 pm Admission Gates close



*In recognition of Disability Awareness Day, the Fair Board Directors invite all those with disabilities to enjoy free admissions today from 9:00 am to 3:00 pm*



**Entertainment Stage Schedule**

Weekend Warriors @ 7:00 pm



# ALLSTAR CHEER OFF COMPETITION

Tuesday - Sept. 14 @ 6:00 PM in the Grandstands

Superintendent: Danyel Wortkoetter

General Admission Seating \$2.00 - Children 5yrs and under FREE

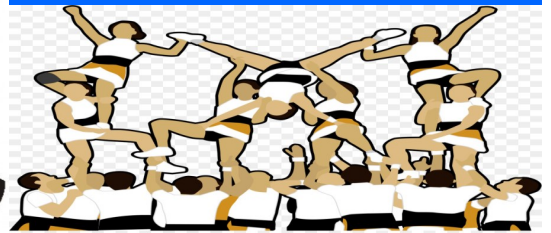


Presented by ~ NWO Elite Athletics  
Welcome

Groups, Individuals & Schools

- Spirit Awards
- Team Awards
- Jump Off Awards
- Tumble Awards

Feel the energy and see the talent in this great, fun and exciting competition.  
See you in the Grandstands!



## Thank you for caring.

Jodi Herman Ins Agcy Inc  
Jodi Herman, Agent  
224 North Defiance Street  
Archbold, OH 43502  
Bus: 419-445-8626

When we turn caring into doing, we can change lives. I'm proud to support Williams County 4-H and the work they do to make the world better.



# WEDNESDAY SEPTEMBER 15th

## Women's DAY

### Junior Fair Schedule

5:00 pm Showmanship Sweepstakes @ the Show Pavilion

### Senior Fair Schedule

- 9:00 am Admission Gates Open - Adults \$5 12 & under Free
- 9a - 3p Women's Day - free admission for females
- 9:00 am Kids Day on the Farm @ the Show Pavilion
- 12:00 pm Round 2—Flower Show Judging @ the Gillette Building
- 1:00 pm MAIN EVENT - Harness Racing
- 2p - 9p Barnyard Friends @ the Dairy Barn
- 9:00 pm Admission Gates close



*In recognition of Women's Day the Fair Board Directors extend a special invite to all females to enjoy admissions today from 9:00 am to 3:00 pm. Sponsored in part by the*

### Entertainment Stage Schedule

Bridging the Gap Ministries @ 7:00 pm

**TICKET OFFICE**

Open Daily  
9 am to 8 pm

THANK YOU,  
VOLUNTEERS!



## Harness racing

Wednesday - Sept. 15  
1:00 PM @ the Grandstands  
Superintendent: Dave Page

Admission FREE  
Seating sponsored by the Williams County Harness Horseman's Association



## Showmanship

2021 Williams County Fair  
Showmanship of Showmanship Sweepstakes

Join us in the Show Pavilion as the 4H & FFA youth showcase their animal projects in competition for the Sweepstakes title! Judging will start at the Horse Arena and then moves to the Show Pavilion. 5:00 PM



SHULTZ HUBER  
AND ASSOCIATES, INC.  
CERTIFIED PUBLIC ACCOUNTANTS

Certified Public Accountants &  
Business Development Specialists



Proud sponsor of the Williams County Fair and a GOLD sponsor of the concert.

### ARCHBOLD OFFICE

105 Stryker Street  
Archbold, OH 43502  
Telephone: (419) 445-2000

### BRYAN OFFICE

126 East High Street  
Bryan, OH 43506  
Telephone: (419) 636-8000

### DEFIANCE OFFICE

101 Clinton Street  
Defiance, OH 43512  
Telephone: (419) 782-2000

### VAN WERT OFFICE

595 Fox Road  
Van Wert, OH 45891  
Telephone: (419) 238-2000

# THURSDAY SEPTEMBER 16th

## COMMODITY DAY

### Junior Fair Schedule

6:30 pm Youth Night Events @ the Grandstands

### Senior Fair Schedule

9:00 am Admission Gates Open - FREE thanks to our sponsors!  
COMMODITY DAY

2p - 9p Barnyard Friends @ the Dairy Barn

6:30 pm MAIN EVENT - Youth Night - FREE GRANDSTANDS

9:00 pm Admission Gates close

### Entertainment Stage Schedule



Bridge County Band @ 7:00 pm

Admission is free!

COMMODITY DAY



Williams County Pork Producers  
Williams County Dairy Association  
Williams County Beef Producers

# YOUTH NIGHT

## 4H Parade - 6:30 PM

Superintendents: P. Goll & J. Winebrenner  
 "Line up for the parade at the North end of the track  
 @ 6:00 PM"



You are invited to join us welcome each of the 4H groups in Williams County show off their colors and pride during the 4H parade in front of the grandstands.



## Tug -O'-War Contest

Following the 4H Parade, the annual tug-o'-war contest will take place. This fun battle goes between 4H groups, Jr. Fair and the Sr. Fair. Watch and see who wins the title this year!

## Pig Scramble

Rules; Contestants must complete & return an official entry form and a minor's release form by Tuesday (9/14/2021) before he or she will be allowed to compete. No exceptions. Forms are ONLY available at the Pork Producers Stand at the south end of the Grandstands. The decisions of the Pork Producers is final and the Board supports all of the decisions they make regarding the event.



## Mutton Buckin' Contest

Rules; Age group 8 to 9 who have not shown in or been a 4H member are eligible. The winners are riders who make the 8 second ride! They receive \$25 each to purchase a lamb for the 2022 fair year. Applications are in the Fair Office and sign up deadline is Thursday (9/16/21) by noon. Last years winners are not eligible.



## Dairy Barrel Racing

The great dairy barrel race is intended to encourage youth to enroll in the 4H program and complete a Dairy Heifer Calf or Dairy Feeder project. The winning teammates in each of the 3 classes will be awarded \$100 certificate from the Williams County Dairy Association to be used for the purchase of a 2021 4H Dairy project. Registration forms are at the Milkshake Stand and the deadline for all forms is Wednesday (9/15/21). A complete list of the rules are available with the form!



## Pullet Pursuit

Ages 4 to 7. Giving children a chance to bring a poultry project to the 2022 fair is what this fun event is all about. Children will chase the feathered friends in hope to capture a chicken. Winners will each receive a chicken to raise for a poultry project in the 2020 fair. The forms are available in the fair office with a deadline of Thursday (9/16/21) by noon. Good luck and have fun!





# FRIDAY SEPTEMBER 17th

## DERBY DAY

### Junior Fair Schedule

Animals not in the Junior Fair Sale may be released from 6:00 a.m. until 8:00 a.m.

Animals not in the Junior Fair Sale may be Released from 8:00 p.m. until 11:00 p.m.

### Senior Fair Schedule

- 9:00 am Admission Gates Open - Adults \$5 12 & under Free
- 10:00 am Rain Date - Harness Racing
- 5p - 9p Barnyard Friends @ the Dairy Barn
- 6:00 pm Grandstand Seating/Infield Seating Opens
- 7:00 pm Main Event - Demolition Derby
- 9:00 pm Admission Gates close

### ANIMAL REMOVAL POLICY

Exhibitors who wish to remove animals not in the Junior Fair Sale may only do so according to the scheduled release times. Safety is paramount and we ask you exercise caution around fair guests loading your animals and gear. Do not block fire lanes or building access for extended period of time. If you need assistance, please contact the barn



**\*\*ALL PIT ENTRANCE & EXIT IS MADE NORTH OF THE GRANDSTANDS AT THE WALK THROUGH GATE ACROSS FROM THE GILLETTE BUILDING\*\***

### Entertainment Stage Schedule



Electrik Circus @ 7:00 pm

# SATURDAY SEPTEMBER 18th

## JR FAIR AUCTION DAY

### Junior Fair Schedule

“Terminal Sale” - Show Pavilion  
9:30 AM

See the Jr. Fair Office for a Sale Listing

All Livestock Removed from the Barns @ 4:00 PM

### Senior Fair Schedule

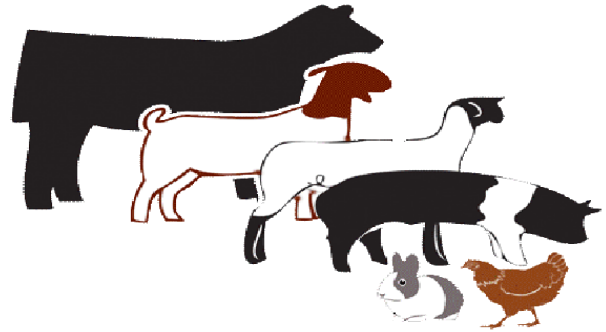
- 9:00 am Admission Gates Open - Adults \$5 12 & under Free
- 9:30 am Junior Livestock Auction @ the Show Pavilion
- 6:00 pm Truck Pulls @ Grandstand
- 9:00 pm Admission Gates close

### Entertainment Stage Schedule



Cook & Belle @ 7:00 pm

# Junior Livestock Auction



9:30 AM - At the Show Pavilion  
The Williams County Jr. Fair Livestock Sale  
Terminal Sale



A special thanks for our Auctioneers for donating their time for these 4H & FFA students and their projects.

### THANK YOU BUYERS

*Every dollar counts! These children and young adults work hard on these projects and we thank all of the many livestock buyers for their amazing support!*





*Williams County Fair is proud to have Bloomin Tasty Taters here!  
Stop by and see Rick and his team and bring along your taste buds and appetite.  
Bloomin Tasty Taters wishes all the 4H and FFA youth the very best this 2021 Fair!*



**WCAS Constitution****Article I****Section 1 – Name**

This organization shall be known as the Williams County Agricultural Society.

**Article II****Section 1 – Purpose**

The purpose of this Society shall be for the improvement of agriculture, domestic, industry, public schools, better acquaintance of our citizenship and for wholesome entertainment and shall be the overseers of the Williams County Agricultural Society Land Preservation Project

**Article III****Section 1 – Officers & Directors**

The officers of this Society shall consist of a president, vice president, secretary-treasurer, and the board of directors consisting of 8 or more members.

**Section 2 – Ex-Officio Directors**

The Williams County Extension Educator / 4H Youth Development, the Williams County Extension Educator / 4-H-ANR Program Assistant, the Williams County Extension Educator / Natural Resources and Community Development, the Williams County School Superintendent, and the Williams County Commissioners shall be ex-officio members of the Board of Directors.

**Article IV****Section 1 – Annual Meeting**

The Annual Meeting of the Board of Directors shall be held the third Thursday in October each year.

**Section 2 – Regular Meeting**

The Society shall hold a regular meeting of the Board to conduct business on the third (3) Thursday of each month in a place upon the fairgrounds as designated by the Board.

**Section 3 – Special Meeting**

The President of the Society or the Executive Committee of the Board may call a special meeting of the Board to conduct special business. To call a special meeting of the Board, the President shall make proper notice to every Director of the Board no sooner than 72 hours and no later than 24 hours prior to the meeting time and date. Notice of the same shall also be given to public and media outlining the place and time of the meeting.

**Section 4 – Emergency Meeting**

The President of the Society may call an emergency meeting of the Board to conduct emergent business. To call an emergency meeting of the Board, the President shall make proper notice to every Director no sooner than 24 hours and no later than 12 hours prior to the meeting time and date. Notice of the same shall be given to the media outlining the place and time of the meeting. A public notice shall be posted on the fair board office door within the same time period as that of Director notice outlined above.

**Article V****Section 1 – The Board**

One third (1/3) of twenty-six (26) potential directors shall be elected annually from in Williams County as listed below, on or after the second day of the fair to be held each year on the Fairgrounds of the Society in the town of Montpelier, County of Williams. One member shall be chosen from each township in Williams County, one from within the corporation limits of the City of Bryan, villages of Montpelier, Edon, Edgerton, Stryker, Pioneer and West Unity, Ohio; four members-at-large from any District of the County; and (woman/man) at-large from each of the three (3) Districts as follows; District #1 Northwest, Bridgewater, Madison, and Millcreek; District #2 Florence, Superior, Jefferson and Brady; District #3 St. Joe, Center, Pulaski and Springfield. Only members of the Williams County Agricultural Society are eligible to become directors and only directors can hold office. The County Agriculture Society members shall have a right to vote at the annual election of Directors of the Society. The Board of Directors shall fix the membership fee. The Polls shall open at 1:00 pm and close at 7:00 pm the day of election at the Annual Elections. Voting will be by ballot furnished by the Society. The President shall appoint clerks and judges from its membership.

**Section 2 – Candidate for Director**

Members of the Williams County Agricultural Society must declare their candidacy for the office of Director by filing with the Secretary a petition signed by 10 members of the Society. Any Candidate for Director is subject to a criminal background check by the Williams County Agricultural Society. The Board of Directors shall meet in executive session to discuss the results of any background check and shall notify the petitioner in writing if his or her petition is declared invalid as a result of the criminal history. The Society shall prohibit any candidate, Director or Officer from the Board who has a felony conviction. Further, a candidate shall be required to submit 2-character reference statements, volunteer at minimum 10 hours during the previous fair and attend three (3) regular meetings of the Board to have his or her petition declared valid by the Board of the Society. Once the petition has been declared valid the candidate shall be added to the ballot for election. Candidates for office of Director must be members of the Williams County Agricultural Society and be residents of Williams County, Ohio. All petitions for consideration must be submitted no later than the third Thursday of October each year. Any Director who currently serves the Society Board may run for re-election for his/her seat by filing his/her petition in the foregoing prescribed manner providing his/her term of office is complete. Any Director who currently serves the Society Board and changes residence may run for his/her new prospective seat by first resigning his/her seat and waiting 15 days before filing a new petition.

Continued from page 34 - Constitution**Section 6 – Suspension of a Director or Officer**

A member of the Board of Directors or an Officer of the Society who absents himself from three (3) consecutive regular meetings or a total of four (4) for the year or who neglects or refuses to perform duties assigned to him/her may be temporarily suspended by the Executive Committee. Notice shall be mailed to the suspended Director or Officer within three (3) days of such action, and he/she shall be given an opportunity to defend himself/herself at the next meeting of the Board and if the suspension is confirmed by a two thirds ( $\frac{2}{3}$ ) vote of the members present and voting, the office shall be declared vacant after a period of thirty (30) days and the vacancy filled in the prescribed manner. A Director or Officer whose suspension is confirmed by the Board may appeal the suspension by submitting to the executive committee a letter requesting time to speak in front of the Board at the next regular meeting. If the Board by a vote of two thirds ( $\frac{2}{3}$ ) declines the appeal, the Director or Officer is then banned from the Board and the fairgrounds for a period of three (3) terms or nine (9) years.

*Article VI***Section 1 – Officer Election**

The Board of Directors at their Annual Meeting shall elect a President and Vice President. Their term of office shall be for one year and until his/her successors are elected. The President and Vice President shall be directors of the Board. The Secretary and the Treasurer may or may not be directors. IF the officers of Secretary and or Treasurer are filled by directors of the Board, they shall be elected in the same manner as the President and Vice President. Their term of office shall be for one year and until his/her successors are elected.

**Section 2 – Annual Elections:**

Annual elections of the membership shall be held on Monday during the annual fair with the polls open from 1:00 pm to 7:00 pm.

*Article VII***Section 1 – President**

The President shall preside at all meetings of the Society and of the Board and such other duties as pertain to the office and shall be entitled to vote upon all questions coming before the board.

**Section 2 – Vice President**

The Vice President shall fulfill the duties of the President in his/her absence and any other obligations as pursuant to the office or as directed by the President.

**Section 3 – Secretary**

It shall be the duty of the Secretary to keep a record of the proceedings of the meeting of the Society, the Board of Directors and the Executive Committee; record all entries for premiums, receive all monies due the Society except for tickets sold by the treasurer, and pay the same to the treasurer, sell all privileges, superintend the printing and distribution of the Society's catalogs; make a report annually to the Board of Directors at the November meeting, and shall also make a report annually to the State Board as required by the rules; shall notify all members of the Board of Directors of all called compensation as the board may deem proper.

**Section 4 – Treasurer**

It shall be the duty of the Treasurer to collect all money for the Society, pay all orders drawn upon the Society accounts as directed by the Executive Committee and or Board of Directors. Further, the Treasurer will submit to the Board a financial statement detailing all receipts of incomes and debits for accounts each month. The Audit Committee shall conduct bi-monthly reviews of the Society accounts to further complete a check and balances as well as an outside firm shall review at minimum bi-annually all accounts of the society and report to the Board at its November meeting the amount of receipts and expenditures.

Continued from page 35 - Constitution

**Section 5 – Executive Committee**

The Executive Committee shall be comprised of the President, Vice President, outgoing President, Treasurer, Secretary and 2 Directors in good standing of the Board. The committee being comprised of seven (7) shall consider quorum anytime 4 of its members are present. The Executive Committee is charged with day to day operations of the fairgrounds and fair board as well as any other duties and powers as assigned by the Board of Directors. The members of the Executive Committee shall be the authorized signors of all warrants drawn upon the Society's Accounts.

**Section 6 – The Board Duties & Quorum**

The Board of Directors shall charge of the management of the affairs of the Society, one more than half of the total board in good standing shall constitute a quorum for the transaction of business.

*Article VIII*

**Section 1 – Fair Dates**

The annual exhibition shall be held at the grounds of the Society at some period between the first day of August and the first day of November.

*Article IX*

**Section 1 – Constitution Amendments**

The Constitution of a Society shall not be amended except by a majority vote of the membership voting at the annual meeting of the Board of Directors. Amendments to the Constitution may be proposed by; a majority of the Board of Directors at a scheduled meeting voting in favor of placing an amendment on the ballot for the annual elections. If an amendment is proposed as set forth above, it shall be submitted to the membership of the Society at the annual meeting. Said amendment shall be published in at least one newspaper of general circulation in the county or district concerned no less than three but not more than 10 days before it is to be voted on. When there is more than one amendment, it shall be submitted in a manner that the members may vote on each amendment separately.

Previous revision date unknown.

Revised by ballot vote 10/15/15 President Dave Page

Revised by ballot vote 11/04/17 President Dave Page

Revised by ballot vote 11/03/18 President Matthew Kennedy

Revised by ballot vote 11/2/2019 President Matthew Kennedy

Revised by ballot vote 11/7/2020 President Matthew Kennedy





## NOTICES/INFORMATION/RULES

In accordance to the rules of the Department of Agriculture for the State of Ohio and the laws of Ohio Revised Code 1711 and Ohio Administrative Code 121, 755 and 901 the Williams County Agricultural Society makes official public notice of the following:

**Constitution** - A copy of the Constitution of the Williams County Agricultural Society is available in the fair office during regular hours.

**Board Policies & Procedures** - The Board of Directors makes available during office hours for the public a copy of voted and approved Policies and Procedures. A sample list of those are:

- Code of Conduct
- Code of Ethics
- Conflict of Interest
- Whistle Blower
- Record Retention
- Alcohol
- Open Records Requests
- Equipment Operations
- Auxiliary Directors

And other minor operational policies.

**Redbook** - A copy of the Ohio Fairs Redbook is available online as well as in the Fair Office.

**Election Notice** - Annual Election of Directors is to be held Monday during the Annual Fair at the Thaman Building on the Fairgrounds. The polls shall open at 1:00pm and close at 7:00 pm. Memberships are on sale in the Fair Office during regular hours and cost \$1.00. No membership may be sold 15 days prior to the elections.

### **OHIO'S LIVESTOCK HEALTH EXHIBITION RULES**

The Williams County Agricultural Society shall operate under the rules of ORC 901: 1-18 which outlines the guidelines and laws of exhibiting animals at the annual fair. A copy of these regulations are available in the fair office.

### What is the Williams County Junior Fair?

Williams County Junior Fair is the showcase of projects completed by youth involved in FFA, 4-H, Boy Scouts, Girl Scouts, and Farm Bureau Youth. The Jr. Fair program is part of the Williams County Fair, which is organized and administered by the WCAS (a.k.a. Senior Fair Board). The fair provides the opportunity for youth to exhibit the results of their project efforts, to have a project evaluated by a hired judge and to compete for awards and prizes. Participation at the county fair is not required for project completion, although it is strongly encouraged. Participation is required; however, to receive a premium. Rules and regulations for the Jr. Fair are designed to promote maximum educational experiences. They are created in part by the Junior Fair Board along with the Sr. Fairboard.

### What is the Williams County Agricultural Society?

The WCAS (Senior Fairboard) supports Williams County 4-H by sponsoring a Williams County Jr. Fair. They are the legal sponsoring authority. They assign Sr. Fairboard members to work with the Jr. Fair and Jr. Fairboard activities. The Fairboard offers premiums for exhibiting, pays for judges, ribbons, electricity, sawdust for shows and supplies necessary to operate the Junior Fair efficiently. They also decide which buildings and facilities will be used. The Sr. Fairboard has final say on the Junior Fair rules which are recommended by the 4-H Advisory Council and Junior Fairboard. The Sr. Fairboard obtains judges for the Senior and Junior Fair. Passes are available to 4-H members over 12 years of age. The Sr. Fairboard is responsible for distributing members' passes. The Sr. Fairboard meetings are held on the third Thursday of each month. All buildings and facilities on the fairgrounds belong to the Sr. Fairboard regardless of the source of money.

## Junior Fair Rules & Regulations

### I. THE PURPOSE OF THE JUNIOR FAIR

The purpose of the Junior Fair shall be to promote and encourage agriculture, horticulture, production of better livestock and to improve domestic, commercial and educational interests of the young people of Williams County.

### II. ELIGIBILITY

Any boy or girl belonging to the following organizations in Williams County: FFA Chapters and Agri-Science Classes, 4-H Members or Other Youth Organizations

1. Boys and girls who are regularly enrolled in any of the above named organizations are eligible to show providing they have complied with the rules of the Junior Fair as given in this premium book. Exhibitors must successfully meet all requirements of their youth organizations before being eligible to exhibit for competition.
2. Other youth organizations that are affiliated with county, state and national organizations.
3. There shall be two classes of exhibits on exhibition at the Jr. Fair, individual and group. Individual exhibits and awards shall be limited to those organizations supported whole or part by public monies as specified by revised code of the General Assembly of the State of Ohio. At the present time, this includes 4-H and FFA.
4. Members' entries must fit into the divisions allowed for their organizations by the Junior Fair (e.g. only 4-H members may exhibit in the 4-H project classes; only 4-H and FFA members may exhibit in the livestock classes; other specific project eligibility are listed by department.)
5. Should an exhibitor belong to both a 4-H club and a FFA chapter in the same county, in all cases, the projects must be separate and different. Examples of separate and different projects are breeding-market lamb; beef breeding-market beef; cows in production-dairy heifer not freshened; horse production-horse riding; and laying hens-market poultry.
6. The Ohio Department of Agricultural requires all youth who produce livestock for breeding, market and/or produce a marketable livestock commodity (i.e., milk) to attend a general Livestock Quality Assurance program each year or test out at the appropriate age

level. Any youth failing to meet this requirement will not be permitted to exhibit livestock (excluding dogs, breeding rabbits, llama and small animals) at the Ohio State Fair and the Williams County Fair. Check 4-H Calendar for LQA and testing dates. Deadline is June 1 of current year.

7. Livestock Project Interview: All 4-H and FFA members must pass an oral interview for each project enrolled to exhibit and/or sell that project animal (s) at the Williams County Fair. Any youth failing to pass the interview will receive a letter stating such. The Junior Fair eligibility for the respective specie(s) will be at the discretion of the Senior Fairboard Livestock Committee. Note: Definition of pass: Have the project book and feed record completed to date, completed one page report either in book or on separate paper (one report per species) and attempt to answer oral questions that are taken from the project book(s). Livestock Interviews will be held Wed., August 7. Anyone not able to attend on the original interview date should contact the OSU Extension office prior to that date to schedule an early interview. Early interviews must be completed before the regularly scheduled interview date. Youth missing the official Livestock Interview date will have no more than 7 days following the official interview date to pay a fee of \$50, payable to the Williams County Ag. Society, complete the Livestock Interview and turn in an entry form. Anyone missing both deadlines will not be able to exhibit an animal at the Williams County Fair for the current year and should complete their project(s) with an educational display.

8. Entry Forms are to be turned in at Livestock Interviews or at the time of Early Livestock Interviews. All FFA Farm Shop and Farm Products Department entries must be turned in by June 1 of the current year.

9. All animals must comply with health requirements of the Williams County Fair and Ohio State Department of Agriculture.

10. All animals (exhibits) must be fully owned as evidenced by a bill of sale before June 1 of current year; with the exception of the pen of three market chickens and beef projects. Be sure to check with each division for different rules.

11. Any project not meeting all Jr. Fair project requirements will not enter the fairgrounds.

#### **4-H and Cloverbud Membership Policy**

Ohio 4-H Membership is the youth development initiative of Ohio State University Extension and is open to all boys and girls in Ohio. Cloverbud membership is open to youth 5-8 years old and in grades K-2. Cloverbuds is a non-competitive program. Traditional 4-H membership begins when the youth is at least eight years of age and in the third grade as of January 1. A member must not have passed his or her 19th birthday on January 1 of the current year. 4-H enrollment deadline is April 1 with April 15th being the deadline for changes. Only traditional 4-H club members can exhibit livestock, compete for awards or sell livestock at the Williams County Junior Fair. 4-H Livestock project books must be up-to-date when junior fair entry forms are submitted. 4-H members must attend four club meetings or club activities to compete by August 7 which is Livestock Interview day.

#### **4-H membership across county lines**

Ohio State University Extension administers the 4-H youth development education program whose mission is to develop youth to reach their fullest potential as capable, competent, caring, and contributing citizens. Each county in Ohio conducts the 4-H youth development program to accomplish this goal. In order to affirm Ohio State Extension's position concerning across county (and/or state lines) 4-H membership and establish guidelines in this area to fulfill the above mission, the following philosophy and process statements are provided.

1. Youth are expected to affiliate with the program in their county of residence. 4-H membership in a county other than the county of residence is limited to an individual who may live in one county very close to a county line, but is logically oriented to another county by school district, church, town or city corporation limits, and/or other governmental boundaries.
2. 4-H membership in two counties simultaneously is NOT possible. Youth must choose one county.
3. It is recognized that limited situations may occur where membership in a county other than the county of residence might be positive. The Educators in both counties must be in agreement that the change should occur. This agreement should be based on their professional judgment in accord with the opening paragraph of this policy. Please contact the OSU Extension Office in Williams County to request an "Across County Lines" form.

4. Any change motivated by perceived competitive or sale advantage, any change due to controversial issues, or other similar motivations will not be seen as justified reasons for consideration for membership in a county other than the county of residence, and should be automatically rejected by the Educators involved.

#### **FFA Membership**

In FFA, entries are open to regularly enrolled high school Agri- Science students and enrolled in their school FFA Chapter. A member must not have passed his or her 19th birthday on January 1, of current year, to be eligible. Exhibits must be a part of the student's occupational experience program, and follow all Junior Fair rules for exhibit and competition.

#### **III. LIVESTOCK PROJECT BOOKS (UPDATED)**

1. All livestock projects books will be considered complete at the end of the Livestock Interview.

#### **IV. GENERAL**

1. All exhibitors shall abide by the Junior Fair Rules & Regulations regarding tampering and/or misrepresentation, showing & fitting.
2. Pedestrian safety must be observed at all times.
3. All Junior Fair Livestock (including equine) may arrive between 8:00 a.m. and 7 p.m. on the Friday before the opening day of the Williams County Fair.
4. Youth must be present to either show the project animal or sell the project animal. Youth cannot be absent for both or he/she will forfeit the opportunity to sell the project through the Junior Livestock Sale.
5. Any exhibitor may be entered in open classes provided exhibitor conforms to Open Class rules.
6. All livestock not being sold are released early. All livestock not being sold may leave on Friday before 9:00am or after 8:00pm.
7. All livestock should stay on the fairgrounds in designated areas.
8. Any exhibit leaving early without written permission from the Senior Fairboard Superintendent will forfeit all premiums and awards and will be barred for one

**SHOW NUMBERS** - All livestock exhibitors need to stop by the Jr. Fairboard Office to pick up their show numbers once they have checked in their animal (s) into the barns. They will have until close of business on the first Saturday of the fair to pick-up their show numbers. Business hours will be posted in the Jr. Fair Office and shared ahead of time for exhibitors.



9. If an animal designated for the Jr. Fair Sale dies during the fair, the exhibitor cannot participate in the Jr. Fair Sale. Exhibitors will still receive premiums earned.

10. Once an animal leaves the fairgrounds, it will not be allowed to return.

**V. HEALTH REGULATIONS**

1. Effective 2009, health certificates are not required unless animals have to cross a state line to attend the Williams County Fair.
2. Large animals (beef, dairy, equine, goats, llamas, sheep & swine) should be exercised daily for better animal health. Livestock is to be exercised in designated areas. No livestock is permitted to be exercised on the midway, nor in the camping area.
3. **\*\*All animals are to be dehorned and healed prior to fair with no regrowth that is pointed and/or dangerous. If, in a dehorned animal, there is regrowth (scurs), which resembles horn/horns, that animal will be evaluated by the official fair veterinarian. The exception to this rule would be Angora Goats and breeding Boer does.**
4. Completed DUNF papers must be turned in at time of weigh-in. One DUNF required for each market animal. Pen of 3 market poultry and pen of 3 market rabbits require only one DUNF per pen.
5. All required forms must be checked as animal(s) are unloaded or weighed at each livestock department. For exhibitors showing dogs, papers will be checked at the beginning of the show.
6. Any livestock show could be canceled due to any disease outbreak upon authorization of the State Veterinarian.
7. Any animal deemed unsafe to spectators, exhibits and/or exhibitors may be sent home. This determination will be made by the Senior Fairboard Superintendent in charge of the respective division and the Senior Fairboard Livestock Committee members. Their decision is final.

8. Any animal may be deemed unworthy of show due to health condition or injury. This animal will be sent home. This determination will be made by the Senior Fairboard Superintendent in charge of the respective division and the Senior Fairboard Livestock Committee members. Their decision is final.

**VI. CODE OF ETHICS/ PRACTICES**

1. Participation in Jr. Fair should be considered a privilege. All Jr. Fair rules must be followed.

2. Be cooperative to all Jr. and Sr. Fair officials, volunteers, parents, and members of the public.
3. Practice good sportsmanship in all fair events or activities.
4. Exhibitors should make quality their goal in all exhibits (livestock exhibitors refer to the Code of Practices on care of animals.)
5. Parental help is allowed. Guiding and teaching members to do the work, that they are capable of doing, should be the primary goal.

**Code of Practices** The following describes general responsibilities of the exhibitor and all persons in their authority, in the proper care and handling of animals raised for food and fiber.

1. To provide food, water and care necessary to protect the health and welfare of animals.
2. To provide a safe and healthy environment for animals, that is clean, well-ventilated and provides ample space.
3. To use humane and sanitary methods when it becomes necessary to dispose of animals.
4. To make timely inspections of all animals to evaluate the health and ensure that all basic requirements are being met.
5. To ensure proper handling techniques are used to eliminate any undue stress or injury when manual manipulation is necessary.
6. To provide transportation for animals that avoids undue stress or injury caused by overcrowding, excessive time in transit or improper handling when loading or unloading.
7. To make management decisions based on scientific fact and to consider the welfare of the animals.

**VII. STALL/HOUSING**

1. Senior Fairboard livestock superintendents are in charge of assigning buildings or barns, or tents, if necessary, for the different livestock departments.
2. Each exhibitor is responsible for bringing necessary feed, water, equipment and bedding to properly maintain exhibits.

3. Aisles, stalls and/or pens are to be kept clean throughout the fair. After the sale, manure is to be removed from the stalls/pens. There will be no cleaning of pens during the show for that species or during the sale.

Junior Fairboard and Senior Fairboard Superintendents can down grade the premium for not maintaining proper care of animals exhibited.

**VIII. SHOWING/FITTING**

1. Junior Fair exhibitors must show their own animals. Exceptions will be made only for exhibitors who may be physically impaired, who have two animals entered in the same class, or an exhibitor is absent on show day due to other commitments. In case of these exceptions, another boy or girl who is a Junior Fair member may exhibit the animal with the authorization of the Superintendent in charge. If a Junior Fair Livestock Exhibitor cannot be present at the time of judging the exhibitor will need to present to the Junior Fairboard office a written permission notice signed by the parent.

2. Show attire should include clean, neat appropriate clothing. This includes hard soled shoes. No writing, farm name, advertising or 4-H or FFA logos permitted on clothing. Refer to individual department rules for specific dress code.

3. Fitting of animals shall be done only by exhibitor and immediate family members. Immediate family consists of father, mother, step-father, step-mother, grandparents, sibling or guardian. Current Williams County Junior Fair exhibitors may assist each other in the fitting/grooming process. Exhibitor of animal should take an active role in the grooming process. Senior Fairboard Superintendent will address any infraction of the above rule immediately. Any further penalties or disqualifications will be addressed by the Senior Fairboard Livestock Committee.

**IX. JUNIOR LIVESTOCK TAMPERING AND/OR MISREPRESENTATION**

1. Any exhibitor entered or planned to enter the Junior Fair classes that are misrepresented or exhibited with unacceptable practices may be removed from the Junior Fair Show and Sale and may forfeit premiums and awards. The interpretation and enforcement of these rules and all Junior Fair rules will be made by the Rules Interpretation Committee. Application to any animal, of any material which will conceal the true conformation or condition of said animal, or make said animal appear more sound than it actually is, will result in disqualification.

2. Tampering and/or misrepresentation as to breeding, age, ownership, custody and any other irregularity in showing will be considered fraud and deception.

3. To maintain a high degree of confidence and integrity in the livestock shows, the Senior Fairboard reserves the right to disqualify any animal fitted in an unethical manner and disqualify the exhibitor and the exhibitor's assistant who fitted the animal involved.

4. Unethical fitting shall include any cutting or tearing of the hide, cutting or tearing underneath the hide or removal of tissue in any attempt to alter the shape or appearance. It shall also include attempts to disrupt or change normal dental development, dyeing or coloring hair, adding artificial tail- heads, switches, polls, hair and heels, as well as any attempt to change the conformation and degree of firmness, by administration of fluids or air internally or externally in a liquid, solid or gaseous state. Transparent grooming materials only may be used.

5. The use of clenbuterol and other unapproved drugs is prohibited.

6. All exhibitors, their immediate family, and any other parties involved in the unethical fitting and showing of an animal will be barred forever from exhibiting or showing at this fair and will forfeit all premiums, prize money and awards won in any junior fair and/or open class divisions.

7. Should fraud or deception, and proof, as determined by the Senior Fairboard, be discovered after the animal or animals have been shown and prior to the sale, such animal(s) shall not be permitted to sell.

8. Should violation be discovered after the sale, all sale money shall be returned to the buyer and the animal, carcass value shall be returned to the exhibitor. All placings in show will stand. No animals will move up. Any carcass suspected of being tampered with or suspected of containing drugs will be detained until the investigation is complete.

9. If the carcass is condemned at the packing plant for any reason, it shall be grounds for disqualification in the on-foot and carcass division of the show. Additionally, all premiums and sale money shall be forfeited and the loss of the animal be incurred by the exhibitor.

10. No painting, coloring or application of other foreign substances to the hooves or any other part of any animal with the exception of equine hooves.

11. No icing or cold compresses can be applied to any animal unless administered or prescribed by a licensed veterinarian for fever.

**X. PREMIUMS**

1. Premium money is paid by the Williams County Ag Society for exhibition of project work. The premium disbursed is based upon amounts set for each category or department on an individual or group basis.

**JUNIOR FAIR SALE RULES**  
**ALL MARKET ANIMALS**  
**MUST GO TO HARVEST/SLAUGHTER**  
**Saturday, Sept. 18, 9:30 a.m.**

1. All animals to be sold in the Junior Fair Sale must have been shown in the Junior Fair market classes.
2. If an animal designated for the Jr. Fair Sale dies during the fair, the exhibitor cannot participate in the Jr. Fair Sale. Exhibitors will still receive premiums earned. Also for no reason can anyone soliciting/put ads on pens for buyers or anything else.
3. Animals will be weighed upon arrival from 8:00am – 7:00pm.
4. There will be additional emphasis placed on a desirable market weight. Minimum pounds for Beef Steers must be 950 pounds, Swine 220 pounds, Sheep 90 pounds, Market Goats: min. 50 pounds, Feeder Calves min. 300 – 650 pounds, Rabbits Pen of Three, each rabbit should weigh 3.5 – 5.5 pounds, Rabbit Fryer 3.5—5.5 pounds, Rabbit Roaster 5-9 pounds and Poultry Pen of Three, each chicken should weigh 5-7 pounds each. All animals go through the scales once, no reweighs.
5. Livestock Committee representatives obtain a market value with livestock buyers.
6. An exhibitor may pass through the sale ring only one time unless they are the owner of multiple market grand champions or reserve grand champions.
7. All Market Grand Champions and Reserve Grand Champions must sell. Feeder calves are the only exception to the rule and they have the option to sell.
8. All market livestock going through the Junior Fair Sale must go to a buyer or packer. Exhibitors may sell any additional market animals at market price to a packer privately.
9. Destination forms are to be filled out by exhibitors and signed by a parent or guardian. Destination forms identify only the market animals and verify destination of each animal – sale, direct or custom processing. Forms are due at time of weigh-in. Changes can be made by an exhibitor selected as Grand and/or Reserve Champion only.
10. Each exhibitor is responsible to the buyers for the animal(s) until they are loaded on the packers' truck.
11. Junior Fair Sale Fee will be based on 5% of the gross sale for Junior Fair improvements.
12. Sale fee will be used for Junior Fair expenses, advertising, promotion and improvements.
13. The order of sale rotates yearly. The division of livestock sold first one year will be sold last the following year. Single market animals will be sold first then the market pens. A division being added to the sale starts at the bottom of the order. Dairy Feeders, Beef Feeders, Market Meat Goats, Market Swine, Dairy, Beef Steers, Dairy Steers, Market Sheep, Broilers, Market Turkeys, Market Ducks and Market Geese, Rabbits - Single, Rabbits - Pens, will each rotate within themselves when they move to the end of the sale.
14. Junior Fair Sale Committee is responsible for all areas of the sale; banking, promotion and advertising, selecting and coordinating auctioneers, consignors, appraisals, and show and sale barn.
15. A number system will be used for bidding at the Junior Fair Sale. Previous year buyers will be sent a number. Extra numbers will be available at the sale for new buyers.
16. Buyer or buyer's representatives will receive a statement at the Junior Fair Sale. Buyers are asked to be ready to pay immediately following the sale.
17. Buyers will receive buyer recognition banners when they receive their statement at the sale. The Sale Committee consists of the representatives from Senior Fairboard Livestock Superintendents, 4-H Council (4), and the 4-H Extension Educator.
18. Dairy exhibitors will walk a dairy project through the ring individually and sell it to the highest bidder. The animal remains the property of the Junior Fair exhibitor.
19. Any exhibitor wanting to donate to the Junior Fair Buildings or 4-H Activities Fund must fill out and sign a form consenting to a specific percentage (5%; 10% ; etc.) figured on Gross Sale Value, to be deducted by no later than Friday noon and signed by parent or guardian.
20. Exhibitors must be present or have arranged for another Jr. Fair member to present their animal in the sale arena. No animals will be sold without the youth or their representative present. Respective Senior Fairboard barn superintendent must be notified of the authorized substitute representative.
21. Youth must be present to either show the project animal or sell the project animal. Youth cannot be absent for both or he/she will forfeit the opportunity to sell the project through the Junior Livestock Sale.
22. If an exhibitor should miss their position in the Jr. Fair Sale line-up, he/she will go to the end of that species that is selling. If you miss that position he/she will go to the end of the entire sale

---

Thank you to all of our Livestock Buyers, Auctioneers and Sale Volun-

---



## *Williams County Junior Fair - Department 200 - Poultry*

Superintendent  
Matt Kennedy  
419-630-3978

**SATURDAY - Sept. 11th**  
**1:00 PM**  
**Show Pavilion**

### **A. Rules and Regulations**

1. Poultry are subject to a negative blood test and inspection by the fair veterinarian, if not obtained within 60 days from a NPIP Certified hatchery and have an NPIP form 15. This does not include waterfowl.
2. Exhibitors are limited to two entries per class.
3. Premiums to be paid to the top 4 grades per project plus showmanship.

### **B. Market Classes**

1. To exhibit a pen of three market chickens, members must be enrolled in the appropriate (market) project or the FFA poultry project.
2. A meat pen of Market Chickens (150CM) consists of three chickens between 6-8 weeks of age weighing between 5-7 pounds each. Animals not meeting this requirement are not eligible to sell in the Junior Fair Sale and will be graded separately.
3. Market Turkey (150TM) class consists of two males that are approximately 18 weeks of age. Turkeys can be shown in showmanship class and are shown similar to swine, with a cane.
4. Market Ducks (150DM) class consists of two market-type ducks (either sex) approximately 18 weeks of age.

### **C. Breeding classes**

1. Must be enrolled in 150CEP to exhibit in the Pullet Class and/or Commercial Hen Class. Must be enrolled in the 150CE to exhibit in Bantam and/or Standard classes. FFA members must be enrolled in the FFA poultry project.

### **Department #200/Section PO/Poultry Classes**

200. Senior Showmanship (age 15-18)
201. Intermediate Showmanship (age 12-14)
202. Junior Showmanship (age 8-11)
203. First Year Showmanship (age 8-18)
204. Showman of Showmen
205. Pee Wee Showmanship
206. Bantam Rooster (1) born before Jan. 1st
207. Bantam Hen (1) born before Jan. 1st
208. Bantam Cockerel (1) after Jan. 1st
209. Bantam Pullet (1) after before Jan. 1st
210. Standard Rooster (1) born Jan. 1st
211. Standard Hen (1) born before Jan. 1st
212. Standard Cockerel (1) Born after Jan. 1st
213. Standard Pullet (1) Born after Jan. 1st
214. Pullet Class (2 pullets beginning egg production, approx. 5 months old)
215. Commercial Hen Class (2 hens in egg production and over one year old)
216. Duck, Drake
217. Duck, Hen

218. Goose, Gander
219. Goose, Hen
220. Turkey, Tom
221. Turkey, Hen
222. Self-Determined project (must carry the project)
223. Market Turkey (two males)
224. Market Ducks
225. Market Geese
226. Market Pen of Three Chickens

### **Premiums**

Showmanship Classes: A-\$3.00 B-\$2.00 C-\$1.00

Market Classes: A-\$4.00 B-\$3.00 C-\$2.00

Breeding Classes: A-\$3.00 B-\$2.50 C-\$2.00

## *Williams County Junior Fair - Department 300 - Rabbit*

Superintendent  
Matt Kennedy  
419-630-3978

**Tuesday - Sept. 14th**  
**12:00 PM**  
**Show Pavilion**

### **A. Rules and Regulations**

1. All rabbits, including market meat pens and market roasters, must have a tattoo in the left ear before/as of check in time at the fair. Any rabbits without a tattoo will be graded separately and not eligible for championship honors.
2. Entries in Rabbit Divisions are limited to two entries per class for breeding classes, a maximum of one doe and litter per class, two meat pen entries, two roaster entries, and a showmanship class using one of the rabbits entered by the exhibitor.
3. Show order will include showmanship classes, class 4, class 6, crossbred bucks (all ages), crossbred does (all ages), doe & litter (to be judged in their cage), and market classes.
4. Premiums will be paid to the top 4 grades per project plus showmanship.

### **B. Breeding Classes**

1. Purebred rabbits will be divided and shown by the following breed classes:

#### **Class 4-Fancy**

English Angora, French Angora, Belgian Hare, Britannia Petite, Standard Chinchilla, Dutch, Dwarf hotot, English Spot, Florida White, Harlequin, Havana, Himalayan, Jersey Wooly, Lilac, American Fuzzy Lop, Holland Lop, Mini Lop, Netherland Dwarf, Polish, Rex, Mini Rex, Rhinelander, American Sable, Mini Satin, Silver Marten, Tan, Thrianta, Lionhead.

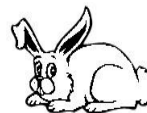
#### **Class 6-Commercial**

American Argent Brown, Beveren, Californian, Champagne D'Argent, Checkered Giant, American Chinchilla, Giant Chinchilla, Cinnamon, Crème D'Argent, Flemish Giant, Giant Angora, Blanc de Hotot, English Lop, French Lop, New Zealand, Palomino, Satin, Satin Angora, Silver Fox.

2. Crossbred rabbits may also be shown.
3. All breeds (purebred and crossbred) are eligible for best in show.

### **C. Market Classes**

1. Market meat pen of three rabbits are required to be born at the member's home from a down owned by the member. The doe must be in the member's possession by June 1st of the current year. A meat pen consists of three rabbits not over 75 days old with each rabbit weighing 3.5-5.5 pounds to be eligible for championship classes and to sell through the ring. A market meat pen must be purebred or crossbred commercial type rabbits.
2. Market roaster class consists of one (market type) meat rabbit weighing 5-9 pounds and under six months of age to be eligible for championship classes and to sell through the ring.. Rabbits must be purebred or crossbred commercial type rabbits. Market roaster projects must be in the member's possession by June 1st of the current year.
3. Market fryer class consists of one (market type) meat rabbit weighing 3.5 to 5.5 pounds and under 75 days old. Rabbits must be purebred or crossbred commercial type rabbits.
3. All market rabbits go through the scales once; no re-weighs. DUNFs must be turned in on Friday's weigh-in day. Only meat rabbits meeting weight requirements will be eligible to sell in the Junior Fair Sale. Non-qualifying rabbits will receive a ribbon only.

**DEPARTMENT 300 - Rabbit (cont')****Department #300-Section RA/Rabbit Classes**

- 300. Senior Showmanship (age 15-18)
- 301. Intermediate Showmanship (age 12-14)
- 302. Junior Showmanship (age 8-11)
- 303. First Year Showmanship (age 8-18)
- 304. Showman of Showmen
- 305. Pee Wee Showmanship

**Breeding Classes**

- 306. Dutch Sr. Buck (over 6mo.)
- 307. Dutch Sr. Doe (over 6mo.)
- 308. Dutch Jr. Buck (under 6mo.)
- 309. Dutch Jr. Doe (under 6mo.)
- 310. Polish Sr. Buck (over 6mo.)
- 311. Polish Sr. Doe (over 6mo.)
- 312. Polish Jr. Buck (under 6mo.)
- 313. Polish Jr. Doe (under 6mo.)
- 314. Holland Lop Senior Buck (over 6 mo.)
- 315. Holland Lop Senior Doe (over 6 mo.)
- 316. Holland Lop Junior Buck (under 6 mo.)
- 317. Holland Lop Junior Doe (under 6 mo.)
- 318. Mini Lop Sr. Buck (over 6 mo.)
- 319. Mini Lop Sr. Doe (over 6 mo.)
- 320. Mini Lop Jr. Buck (under 6 mo.)
- 321. Mini Lop Jr. Doe (under 6 mo.)
- 322. Netherland Dwarf Sr. Buck (over 6 mo.)
- 323. Netherland Dwarf Sr. Doe (over 6 mo.)
- 324. Netherland Dwarf Jr. Buck (under 6 mo.)
- 325. Netherland Dwarf Jr. Doe (under 6 mo.)
- 326. Mini Rex Sr. Buck (over 6 mo.)
- 327. Mini Rex Sr. Doe (over 6 mo.)
- 328. Mini Rex Jr. Buck (under 6 mo.)
- 329. Mini Rex Jr. Doe (under 6 mo.)
- 330. Other Purebred Class 4 Sr. Buck (over 6 mo.)
- 331. Other Purebred Class 4 Sr. Doe (over 6 mo.)
- 332. Other Purebred Class 4 Jr. Buck (under 6 mo.)
- 333. Other Purebred Class 4 Jr. Doe (under 6 mo.)
- 334. Class 4 Purebred Doe & Litter
- 335. Californian Senior Buck (over 8 mo.)
- 336. Californian Senior Doe (over 8 mo.)
- 337. Californian Intermediate Buck (6 to 8 months)
- 338. Californian Intermediate Doe (6 to 8 months)
- 339. Californian Junior Buck (under 6 mo.)
- 340. Californian Junior Doe (under 6 mo.)
- 341. New Zealand Senior Buck (over 8 mo.)
- 342. New Zealand Senior Doe (over 8 mo.)

- 343. New Zealand Intermediate Buck (6 to 8 months)
- 344. New Zealand Intermediate Doe (6 to 8 months)
- 345. New Zealand Junior Buck (under 6 mo.)
- 346. New Zealand Junior Doe (under 6 mo.)
- 347. Other Purebred Class 6 Sr. Buck (over 8 mo.)
- 348. Other Purebred Class 6 Sr. Doe (over 8 mo.)
- 349. Other Purebred Class 6 Intermediate Buck (6 to 8 months)
- 350. Other Purebred Class 6 Intermediate Doe (6 to 8 months)
- 351. Other Purebred Class 6 Jr. Buck (under 6 mo.)
- 352. Other Purebred Class 6 Jr. Doe (under 6 mo.)
- 353. Class 6 Purebred Doe & Litter
- 354. Crossbred Bucks
- 355. Crossbred Does
- 356. Crossbred Doe and Litter

**Market Classes**

- 357. Market Meat Pen





## *Williams County Junior Fair - Department 400 - Dairy*

Show  
Superintendent  
Alex Baker  
419-519-2499

**TUESDAY - Sept. 14th**  
**9:00 AM**  
**Show Pavilion**

**No District 10 Black/White Showmanship Award  
Premiums**

Dairy Breeding Classes: A - \$10.00; B - \$8.00; C - \$6.00  
Showmanship: A - \$3.00; B - \$2.00; C - \$1.00

**Department #400-Junior Fair Dairy  
Exhibitor Rules & Regulations**

**Please also read complete Junior Fair Rules & Department Rules.**

1. Animal ID papers are required to be turned into OSU Extension office by June 1st.
2. If exhibitor or parent does not own the animal, a lease agreement must be on file at the OSU Extension office by June 1st.
3. All animals must be halter broken to lead and double tied with neck strap and halter.
4. All animals should be purebred.
5. Exhibitors are limited to 2 entries in each class.
6. Entries will be judged on type only.
7. No tampering to udders.
8. Clean, neat appropriate clothing including white shirt, white pants and hard soled shoes or boots are expected.
9. Each age category heifer and cow in a breed will compete for breed champion.
10. Each age category heifer will compete for Champion Heifer All Breeds.
11. Each age category cow will compete for Champion Cow all Breeds.
12. The Champion All Breeds and Champion Cow all Breeds will compete for Grand and Reserve Champion Dairy project. These winners will sell as the Champion and Reserve Champion dairy project.

**Age Classification**

- Spring Heifer Calf, born on or after March 1st, and over 4 months of age of current year.
- Winter Heifer Calf, born Dec. 1st, last year through Feb. 28th, of current year.
- Fall Heifer Calf, born Sept. 1st, last year through Nov. 30th, last year.
- Summer Yearling Heifer, born June 1st, last year through August 31st, last year
- Spring Yearling Heifer, born March 1st, last year through May 31st, last year.
- Winter Yearling Heifer, born December 1st, through February 28th, last year.
- Fall Yearling Heifer, born Sept. 1st, through November 30th, two years ago.
- Spring Two Year Old Cow, born March 1st, through Aug. 31st, two years ago.
- Fall Two Year Old Cow, born Sept. 1st, through Feb. 28th, two years ago.
- Three Year Old Cow, born Sept. 1st, though Aug. 31st, three years ago.
- Four Year Old Cow, born Sept. 1st, through Aug. 31st, four years ago.
- Aged Cow, Five Years Old and Over, born before Sept. 1st, five years ago.




---

**Our Junior Fairboard Kids Rock - A special thanks for all they do for each show!**

---

**DEPARTMENT 400 - DAIRY (cont')**

**Department-400/ Section- DC/ Class**

- 400. Senior Showmanship (15-18)
- 401. Intermediate Showmanship (12-14)
- 402. Junior Showmanship (8-11)
- 403. First Year Showmanship (8-18)
- 404. Showman of Showmen
- 405. Pee Wee Showmanship
- 406. Brown Swiss Spring Calf
- 407. Holstein Spring Calf
- 408. Jersey Spring Calf
- 409. Other Spring Calf
- 410. Brown Swiss Winter Calf
- 411. Holstein Winter Calf
- 412. Jersey Winter Calf
- 413. Other Winter Calf
- 414. Brown Swiss Fall Calf
- 415. Holstein Fall Calf
- 416. Jersey Fall Calf
- 417. Other Fall Calf
- 418. Brown Swiss Summer Yearling
- 419. Holstein Summer Yearling
- 420. Jersey Summer Yearling
- 421. Other Summer Yearling
- 422. Brown Swiss Spring Yearling
- 423. Holstein Spring Yearling
- 424. Jersey Spring Yearling
- 425. Other Spring Yearling
- 426. Brown Swiss Winter Yearling
- 427. Holstein Winter Yearling
- 428. Jersey Winter Yearling
- 429. Other Winter Yearling
- 430. Brown Swiss Fall Yearling
- 431. Holstein Fall Yearling
- 432. Jersey Fall Yearling
- 433. Other Fall Yearling
- 434. Brown Swiss Jr. 2 Yr. Old Cow
- 435. Holstein Jr. 2 Yr. Old Cow
- 436. Jersey Jr. 2 Yr. Old Cow
- 437. Other Jr. 2 Yr. Old Cow
- 438. Brown Swiss Sr. 2 Yr. Old Cow
- 439. Holstein Sr. 2 Yr. Old Cow
- 440. Jersey Sr. 2 Yr. Old Cow
- 441. Other Sr. 2 Yr. Old Cow
- 442. Brown Swiss 3 Yr. Old Cow
- 443. Holstein 3 Yr. Old Cow
- 444. Jersey 3 Yr. Old Cow
- 445. Other 3 Yr. Old Cow

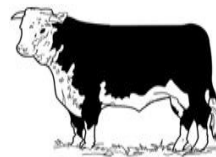
- 446. Brown Swiss 4 Yr. Old Cow
- 447. Holstein 4 Yr. Old Cow
- 448. Jersey 4 Yr. Old Cow
- 449. Other 4 Yr. Old Cow
- 450. Brown Swiss Aged Cow
- 451. Holstein Age Cow
- 452. Jersey Aged Cow
- 453. Other Aged Cow



## *Williams County Junior Fair - Department 500 - Beef*

Show  
Superintendent  
Alex Baker  
419-519-2499

**Monday - Sept. 13th**  
**2:30 PM**  
**Show Pavilion**



### **Premiums**

Market Classes: A - \$4.00, B - \$3.00, C - \$2.00

Breeding Classes: A - \$10.00, B - \$8.00, C - \$6.00

Showmanship: A - \$3.00; B - \$2.00; C - \$1.00

### **Dept. #500-Junior Fair Beef Exhibitor**

#### **Rules & Regulations**

Please also read complete Junior Fair Rules & Department Rules.

1. All animals must be halter broken to lead and double tied with neck strap and halter.
2. Show halters, show sticks, combs and brushes are required.
3. Exhibitors are limited to 2 entries per class.
4. Male market animals must be castrated and healed by official tagging date for that animal. According to the Ohio Code of Ethics, it is unacceptable to castrate cattle over 8 months of age.

#### **Market Classes**

(Includes beef and dairy steer and feeder classes)

1. 4-H members must be enrolled in 117M to exhibit a market steer (beef or dairy); 117BF to exhibit a beef feeder; 117DF to exhibit a dairy beef feeder. FFA members must be enrolled in their FFA beef project.
2. All Market Steers/heifers must be in the care of the member by January 1st and ear tagged by the Senior Fair-board on specified dates before January 15th of current year. Dairy beef feeder calves and beef feeder calves must be in possession by June 1st of current year and tagged by the specified date.
3. Families can tag up to 5 market animals per project-per youth. The animals will be tagged under all youth's names that are active 4-H/FFA members. Animals may still be tagged under individuals as well. Exhibitors planning to exhibit a market beef steer at the Ohio State Fair must register the animal under an individual name. This individual will retain possession of the market beef steer throughout all exhibits for the current year.
4. All feeder calves are required to be wormed and vaccinated for BVD, IBR, PI3, BRSV, PH (Pasteurella Hemolytica), by August 15th. Certificate of vaccination must be turned in along with DUNF upon weigh-in at the fair.
5. Animals may be purebred or crossbred. Dairy market projects must be comprised of 100 percent dairy breeds. Beef market projects must be comprised of 100 percent beef breeds.
6. Steers must be a minimum of 950 pounds to be sold in the Junior Fair Sale.
7. Feeder calves must weigh between 300 to 650 pounds to be eligible for the Junior Fair Sale.
8. Animals over or under the required weight will be shown in a separate class and can still participate in Showmanship. All animals go through the scales once. No re-weighs.
9. Following weigh-in at the fair, market animals will be divided into uniform weight classes.
10. Beef Heifer Feeder Calves or market dairy/beef heifer cannot be exhibited in breeding classes.

#### **Breeding Classes**

1. 4-H members must be enrolled in 117B Beef Breeding to exhibit in the breeding classes. FFA members must be enrolled in their FFA beef project.
2. All breeding animals will be shown by age. Refer to the following dates to determine age of animal.



**DEPARTMENT 500 - BEEF (cont')****Beef Age Classification**

- A Spring Calf must have been calved on or after March 1st of current year.
- A Junior Calf must have been calved between Jan. 1st and Feb. 28th of current year.
- A Winter Calf must have been calved between Nov. 1st and Dec. 31st, last year.
- A Senior Calf must have been calved between Sept. 1st and Oct. 31st, last year.
- A Late Summer Calf must have been calved between July 1st and Aug. 31st, last year.
- An Early Summer Calf must have been calved between May 1st and June 30th, last year.
- A Spring Yearling must have been calved between March 1st and April 30th last year.
- A Junior Yearling must have been calved between Jan. 1st and Feb. 28th, last year.
- A Senior Yearling must have been calved between Sept. 1st and Dec. 31st, 2 years ago.
- A Two Year Old must have been calved between Jan. 1st and Aug. 31st, two years ago.
- An Aged Cow, born prior to Jan. 1st, two years ago, with calf born within past 12 months.

**Department- 500/ Section- BC/ Classes**

- 501. Senior Showmanship (age 15-18)
- 502. Intermediate Showmanship (age 12-14)
- 503. Junior Showmanship (age 8-11)
- 504. First Year Showmanship (age 8-18)
- 505. Showman of Showmen
- 506. Pee Wee Showmanship

**Breeding Classes**

- 507. Spring Calf
- 508. Junior Calf
- 509. Winter Calf
- 510. Senior Calf
- 511. Late Summer Calf
- 512. Early Summer Calf
- 513. Spring Yearling
- 514. Junior Yearling
- 515. Senior Yearling
- 516. 2 Yrs. Old
- 517. Aged Cow

**Market Classes**

- 518. Dairy Feeders
- 519. Beef Feeders
- 520. Market Dairy
- 521. Market Beef



## *Williams County Junior Fair - Department 600 - Sheep*

Show  
Superintendent  
Pam Goll  
419-553-0778

**Monday - Sept. 13th**  
**8:30 AM**  
**Show Pavilion**



### **Department #600 Junior Fair Sheep**

Exhibitor Rules & Regulations

#### A. Rules and Regulations

Please also read complete Junior Fair Rules & Department Rules.

1. All female and intact male sheep must have the official USDA scrapie Id tag affixed to the ear at fair check in. Animals without this official tag will not be allowed to enter the fairgrounds or compete at the Williams County Fair.

#### Breeding Classes

1. Exhibitors are limited to two entries per breeding class.

2. Breeding animals will be shown by age.

3. A Grand Champion Ewe and a Grand Champion Ram will be awarded. The first place lamb and yearling of each sex will compete for the respective Grand Champion.

#### Market Classes

1. All market lambs are to be born after January 1st of the current year of show.

2. All market lambs must be brought to the Williams County Fairgrounds to be tagged on the date designated in June. Families can tag up to 5 market sheep per youth-the animals will be tagged under all youths' names that are active 4-H/FFA members. Animals may still be tagged under individuals as well.

3. Exhibitors may enter a maximum of two market lambs and one pair of market lambs in the show. All market lambs must be wether or ewe lambs.

4. All market lambs must be slick shorn within two weeks of the fair. All wool must be a uniform length of no more than 1/4 inch.

5. Market lambs must have a minimum weight of 90 pounds to sell in the Junior Fair Sale. Animals not meeting the required weight will be shown in a separate class and can still participate in Showmanship. All animals go through the scales once. No re-weighs.

6. Single market lambs born and raised in Williams County may be entered in the born and raised class. A Williams County Born and Raised Market Lamb entry form must be completed and turned into the Williams County OSU Extension office by July 1st. If entry form is not received by specified date, animal (s) will be entered in the traditional market lamb class.

7. The Champion and Reserve Champion Market Lambs will compete with the Champion and Reserve Champion County Born Market Lambs to select one Grand Champion and one Reserve Grand Champion Market Lamb.

### **Premiums:**

Breeding:

A-\$7.00 B-\$6.00 C-\$5.00

Market:

A-\$4.00 B-\$3.00 C-\$2.00

Showmanship:

A-\$3.00 B-\$2.00 C-\$1.00

### **Department- 600**

Section- SH/ Class

600. Senior Showmanship

(age 15-18)

601. Intermediate Showmanship

(age 12-14)

602. Junior Showmanship

(age 8-11)

603. First Year Showmanship

(age 8-18)

604. Showman of Showmen

605. Pee Wee Showmanship

(Cloverbuds)

606. Ewe Lamb

607. Yearling Ewe

608. Ram Lamb

609. Yearling Ram

610. Pair of Market Lambs

611. Single Market Lamb

612. Single Market

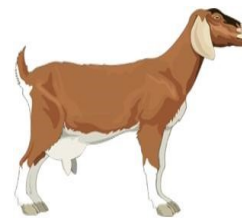
Lamb County Born



## *Williams County Junior Fair - Department 700 - Goat*

Show  
Superintendent  
Matt Kennedy  
419-630-3978

**Saturday - Sept. 11th**  
**9:30 AM**  
**Show Pavilion**



### **Premiums**

Breeding Classes: A-\$7.00 B- \$6.00 C- \$5.00  
Market Classes: A-\$4.00 B- \$3.00 C-\$2.00  
Showmanship: A-\$3.00 B-\$2.00 C-\$1.00

### **Department #700-Junior Fair Goat**

#### **Exhibitor Rules & Regulations**

1. 4-H members must be enrolled in the correct project to exhibit in specific classes. FFA members must be enrolled in the goat project. A separate animal must be used for each class with the exception of the Doe & Daughter and pack/harness classes.
2. All goats must have the official USDA scrapie ID tag affixed to the ear or tattooed into the ear or tail at Fair check-in. Registration papers in conjunction with the appropriate tattoo placed into the ear or tail will be accepted in lieu of an official USDA Scrapie ID #. Animals without this official tag will not be allowed to enter the fairgrounds or compete at the Williams County Fair.
3. Drug Use Notification Form is required for all market and lactating goats.
4. No horned goats are allowed on fairgrounds (with the exception of Angora and Boer Breeding Doe). If in a dehorned goat, there is re-growth of horn (movable scurs LESS THAN 1/2") which resembles a horn/horns that animal will be evaluated by the official fair veterinarian for entry.
5. All market goats will go to slaughter. Market goats may be does or wethers, but a doe shown in the market class cannot show in any other class.
6. When the winner of the Pygmy and/or Angora showmanship class is of the age 15-18, an overall Sr. Showmanship winner will be selected by the judge. The top senior showman from the Pygmy, Angora, Meat and/or Dairy showmanship class will represent the goat department in the Showmanship Sweepstakes.
7. Limit of two entries in each class.

8. Show attire: Collared shirt with long pants (no logos, wording, "bling", shorts or capris, matching belt and shoes (no open toes) in black or brown.
9. Goats presented for exhibition must show no evidence of caseous lymphadenitis (superficial abscesses), contagious ecthyma (sore mouth), foot rot, or any other contagious or infectious disease. These goats are not to be unloaded and cannot be shown.
10. NO BUCKS (intact male) GOATS ALLOWED.

#### **Breeding Classes**

1. All goat breeds will be shown by age, in their respective areas (Dairy, Meat, Pygmy and Angora).
2. Doe & daughter pairs must be shown in their respective individual classes as well.
3. Only one Pygmy or Angora Showmanship class will be conducted if under five participants.

#### **Market Goats**

1. All market goats must be weighed on the designated date in June. Families can tag up to 5 market goats (meat and dairy) per youth. The animals will be tagged under all youths' names that are active 4-H/FFA members. Animals may still be tagged under individuals as well.
2. Market goats are to be born between Jan. 1st and April 30th of current year.
3. Market goats must weigh a minimum of 50 pounds to be sold in the Junior Fair Sale. Animals not meeting the required weight will be shown in a separate class and can still participate in Showmanship. All animals go through the scales once. No re-weighs.
4. Market goats with any percentage of Meat Goat ancestry (Boer, Kiko, Spanish, etc.) will be required to show in a Meat Market class. There will be a Grand Champion and Reserve Grand Champion Meat Market Goat and a Grand Champion and Reserve Grand Champion Dairy Market Goat.



**DEPARTMENT 700 - GOAT (cont')****Harness Goats**

1. Harness 1st year-will be halter broken and led with a lead strap. Animals should respond to voice commands of "stop", "go", and "back".
2. Harness 2nd year-will be harnessed and pull an empty cart. Animals should respond to voice commands of "stop, go, and back."
3. Harness 3rd year-will be harnessed and pull a child-driven cart. Animals must respond to the commands of stop, go, back, left and right" while pulling the cart through an obstacle course.
4. The same animal may be used for harness and pack classes only. Harness and pack animals cannot be exhibited as market or breeding animals.

**Pack Goats**

1. Pack 1st year-- must be halter broken and lead with a lead strap.
2. Pack 2nd year—must be halter broken, lead with a lead strap and carry an empty pack.
3. Pack 3rd year—must be halter broken, lead with a lead strap, and carry a loaded pack of at least 25% of the goat's weight.
4. The same animal may be used for harness and pack classes only. Harness and pack animals cannot be exhibited as market or breeding animals.

**Department 700/Section GO/Class**

- 700.Senior Showmanship (age 15-18)  
 701.Intermediate Showmanship (12-14)  
 702.Junior Showmanship (8-11)  
 703.First Year Showmanship (8-18)  
 704.Showman of Showmen  
 705.Pee Wee Showmanship

**PYGMY GOATS**

- 706.Pygmy Doe Kid- born after Jan. 1 of current year.  
 707.Pygmy Doe-under 3 years  
 708.Pygmy Doe-over 3 years

- 709.Pygmy Wether Kid- born after Jan. 1 of current year.  
 710.Pygmy Wether Dairy Goats  
 711.Does, Junior Kid- born after April 1 of current year.  
 712.Does, Intermediate Kid- born March 1-March 31 of current year  
 713.Does, Senior Kid- born Jan. 1 to last day of February of current year.  
 714.Does, Senior Yearling- 12 months & under 24 months old, not in milk.  
 715.Does, under 2 years old in milk.  
 716.Does, 2 years old and under 3 years.  
 717.Does, 3 years old and under 5 years.  
 718.Does, 5 years old and over.  
 719.Doe and Daughter

**MEAT GOATS**

720. Meat Doe-under 1 year old  
 721. Meat Doe-over 1 yrs old and under 3 yrs old  
 722. Meat Doe-over 3 yrs old and under 5 yrs old  
 723. Meat Doe-over 5 yrs old

**PACK AND HARNESS GOATS**

724. Pack Kid  
 725. Pack Yearling  
 726. Pack Senior  
 727. Harness Kid  
 728. Harness Yearling  
 729. Harness Senior

**ANGORA GOATS**

730. Doe, Kid-born after Jan. 1 of current year  
 731. Doe, Yearling-under 24 month of age  
 732. Doe & Kid

**MARKET GOATS**

733. Dairy Market Goat  
 734. Meat-Type Market Goat



## *Williams County Junior Fair - Department 800 - Swine*

Show  
Superintendent  
Joe Wineberner  
419-518-0073

**Sunday - Sept. 12th**  
**9:00 AM**  
**Show Pavilion**



### **Premiums**

Market:  
A-\$4.00 B-\$3.00 C-\$2.00  
Showmanship:  
A-\$3.00 B-\$2.00 C-\$1.00

### **Department #800 Junior Fair Swine Exhibitor Rules & Regulations**

Please also read complete Junior Fair Rules & Department Rules.

1. All youth exhibiting swine must be National Pork Producers Council Level III Pork Quality Assurance verified.
2. Jr. Fair swine show is a TERMINAL SHOW. No swine can return home after the fair. Animals must be sold or custom processed directly from the fair.

#### **Market Classes**

1. Market swine ID forms are due to Extension Office no later than June 1st. Families can ID up to 5 market swine per youth-the animals can be ID'd under all youths' names that are active 4-H/FFA members. Animals may still be ID'd under individuals as well.
2. Animals entered as purebred market hogs must supply proof of registration to Extension Office by July 1st.
3. An exhibitor may enter a maximum of three market singles and one market pair in the swine show. Exhibitors can exhibit no more than two purebred or two crossbred market singles, but cannot exceed 3 market singles. Market animals (singles or pairs) may be barrows or gilts.
4. All male market animals should be castrated and healed by fair. According to the Ohio Code of Ethics it is unacceptable to castrate swine over seventy- five pounds.
5. All market animals must have a measurable 1/2" of body hair, underline included. Ears and tail may be a shorter length.
6. Any purebred market class that does not have at least 5 entries registered at Livestock Interviews will be shown in an All Other Breeds class.
7. All hogs must have a minimum weight of 220 pounds to sell in the Junior Fair Sale. Upon arrival at the swine barn, all animals go through the scales once, no reweighs.
8. Crossbred market animals will be uniformly divided into weight divisions for show after weigh-in. First place single market hog from each weight division will compete for Grand Champion Single Market Hog. Reserve Grand Champion will be selected from the remaining first place animals and the respective second place animal from the Grand Champion class. Grand and Reserve Grand Champion Market Pair will be selected using the same process.
9. Awards will be: 1st Place (Scramble, Purebred(s), each weight division) Market Hog; 2nd Place (Scramble, Purebred(s), each weight division) Market Hog; Grand Champion Single Crossbred Market Hog; Reserve Grand Champion Single Crossbred Market Hog; Grand Champion Market Pair; Reserve Champion Market Pair.
10. Market hogs that are designated as being sold direct (not sold through the sale ring) will be marked 24 hours before shipment. It is the responsibility of the exhibitor to make sure the correct animal is marked. Due to possible health issues, once an animal leaves the fairgrounds, it cannot return.

*A special thanks to our fair friend - Dr. Pete Bowen for being our 2021 Fair Veterinarian.*

**Swine Department- 800**

**Section- SW/ Class**

- 800.Senior Showmanship (age 15-18)
- 801.Intermediate Showmanship (age 12-14)
- 802.Junior Showmanship (age 8-11)
- 803.First Year Showmanship (age 8-18)
- 804.Showman of Showmen
- 805.Pee Wee Showmanship
- 806.Pair Market Hogs
- 807.Scramble Pig
- 808.Berkshire Single Market Hog
- 809.Chester White Single Market Hog
- 810.Duroc Single Market Hog
- 811.Hampshire Single Market Hog
- 812.Hereford Single Market Hog
- 813.Landrace Single Market Hog
- 814.Poland China Single Market Hog
- 815.Spotted Single Market Hog
- 816.Tamworth Single Market Hog
- 817.Yorkshire Single Market Hog
- 818.AOB Single Market Hog
- 819.Crossbred Single Market

## *Williams County Junior Fair - Department 900 Horse*

Show  
Superintendent  
Pam Goll  
419-553-0778

**1st Show - Saturday - Sept. 11th  
8:30 AM**  
**2nd Show - Sunday - Sept. 12th  
10:30 AM**  
**Horse Arena**



### **Premiums**

All Equine Classes: A -\$4.00 B -\$3.50 C -\$3.00

### **Department #900 Junior Fair Horse Exhibitor Rules & Regulations**

#### **A. Rules and Regulations**

1. Equine Identification Form must be on file by June 1st, with the OSU Extension Office. If equine ID forms and vaccination forms are not turned in by specified dates, the named equine is ineligible for Ohio State Fair (PAS) and the Williams County Fair.
2. All equine exhibitors must attend a minimum of one Williams County Quality Assurance to be eligible to participate at the Williams County Fair. Also all required films, forms, etc. must be completed.
3. All equine that will be exhibited at the Williams County Fair must be vaccinated for Eastern and Western Encephalitis, Influenza, Herpes/Rhino, West Nile, and Tetanus. All exhibitors must sign and turn in required vaccination form stating that the vaccines were administered to the equine by the first Thursday in June (official Williams County Horse and Pony measurement date).
4. All equine must be measured on the official county horse measuring date if the animal is 5 years old and younger, or has never received an official height measurement for the Williams County Fair. The exception is that if an equine measure 58 inches or above any time before age 5, a measurement is not required. All measurements are final. Pony height is 58-inches or less. Horse height is anything over 58-inches.
5. Uniform Rules for 4-H Horse Shows, except grouping of classes, will be the official guidelines.
6. All youth age 19 and under, participating in any 4-H equestrian activity, are required to wear properly fitted protective headgear which meets or exceed current ASTM (American Society for Testing and Materials)/SEI (Safety Equipment Institute) standards with the chin harness securely fastened at all times while riding or driving an equine on the Williams County Fairgrounds. It is the responsibility of the rider, or the parent/guardian of the youth participant, to make sure that the headgear worn complied with appropriate safety standards for protective headgear intended for equestrian use, and is properly fitted and in good condition, The Ohio 4-H Horse Program, show committees, officials, Extension personnel and volunteer leaders are not responsible for checking headgear worn for such compliance. The Ohio 4-H Horse Program, show committees, officials, Extension personnel and volunteer leaders make no representation or warranty, expressed or implied, about any protective headgear and cautions riders that death or serious injury may result despite wearing such headgear, as no helmet can protect against all foreseeable injuries in equestrian activities. The Ohio 4-H Horse Program, show committees, officials, Extension personnel and volunteer leaders may, at his/her discretion, check a participant's protective headgear for proper standards. If the youth is found to be wearing unapproved defective or improperly fitting headgear, he/she is not permitted to participate in riding or driving activities until proper headgear is acquired.
7. A member may exhibit two horses or ponies and one single harness horse.
8. Class entries are limited to 7 entries per equine plus showmanship. Premiums will be paid on the top four grades per animal. Each exhibitor may only enter one horse/pony per class. One horse, one rider-no animal sharing. No entries added to classes after entry forms are turned in at Livestock Interviews.
9. Showmanship is required for all participants. When the winner of the Draft Horse Showmanship is age 15-18, an Overall Sr. Showmanship winner will be selected by the judge to represent the horse department in the Showmanship Sweepstakes. The Gymkhana Showmanship class will be held prior to the Gymkhana classes and is open to Gymkhana participants to complete the showmanship requirement.



**DEPARTMENT 900 - HORSE (cont')**

Participants in this class will not be eligible for Showman of Showmen or to represent the Horse Department in Showmanship Sweepstakes. Only ribbons will be awarded for Gymkhana showmanship class only. Only participants in Saturday's showmanship classes are eligible for Showman of Showmen and Sweepstakes. If showmanship is not entered or is scratched at a later date, that individual will not participate in any classes.

10. Junior (Jr.) ages are 8-13 and Senior (Sr.) ages are 14-18 (as of Jan. 1st of current year), except for showmanship classes.

11. First year members can enter First Year Showmanship and either First Year Walk and Trot or the canter and contesting classes.

12. Animals must be stabled in facilities provided by the Fairboard. No padlocks on stalls. Mares with foals, mares in foal, weanlings, and yearlings will have first choice of box stalls. One (1) stall per exhibitor with the exception; 1) an exhibitor that also shows a draft animal 2) an exhibitor w/mare and un-weaned foal. Draft horses will be stalled in the Draft Horse Barn. All additional animals will be hauled in on day of show.

13. When a member exhibits at the county fair, the horse must stay for the entire fair, or forfeit all trophies and premiums. Exception being that a medical release must be signed by the fair veterinarian and the Senior Fairboard Superintendent. Mares with foals have the option of taking project home after the show.

**Department-900/Section HP/Classes****1st Show- Saturday 9/11/21****Horse Arena at 8:30 a.m.**

- 900. Senior Showmanship (age 15-18)
- 901. Intermediate Showmanship (age 12-14)
- 902. Junior Showmanship (age 8-11)
- 903. First Year Showmanship (age 8-18)
- 904. Draft Showmanship 8-18
- 905. Showman of Showmen
- 906. Pew Wee Showmanship
- 907. English Equitation
- 908. English Pleasure
- 909. First Year Walk and Trot Horsemanship
- 910. Horse Senior Horsemanship
- 911. Horse Junior Horsemanship
- 912. Pony Senior Horsemanship
- 913. Pony Junior Horsemanship
- 914. Easy Gaited Equitation
- 915. Horse Senior Western Pleasure
- 916. Horse Junior Western Pleasure
- 917. Pony Senior Western Pleasure
- 918. Pony Junior Western Pleasure
- 919. Easy Gaited Pleasure
- 920. First Year Walk/Trot Pleasure
- 921. Ranch Horse Pleasure
- 922. In Hand Trail
- 923. Trail class
- 924. Trail class-First Year Member Walk-trot
- 925. Western Riding
- 926. Reining
- 927. Draft Driving Class
- 928. Light Pleasure Driving (no draft)

**2nd Show- Sunday 9/12/21****Horse Arena at 10:30 a.m.**

- 929. Gymkhana Showmanship (ribbons only)
- 930. Horse Barrels Sr.
- 931. Horse Barrels Jr.
- 932. Pony Barrels Sr.
- 933. Pony Barrels Jr.
- 934. Horse Flags Sr.
- 935. Horse Flags Jr.
- 936. Pony Flags Sr.
- 937. Pony Flags Jr.
- 938. Horse Cones & Barrels Sr.
- 939. Horse Cones & Barrels Jr.
- 940. Pony Cones & Barrels Sr.
- 941. Pony Cones & Barrels Jr.
- 942. Horse Pole Bending Sr.
- 943. Horse Pole Bending Jr.
- 944. Pony Pole Bending Sr.
- 945. Pony Pole Bending Jr.
- 946. Horse Stake Race Sr.
- 947. Horse Stake Race Jr.
- 948. Pony Stake Race Sr.
- 949. Pony Stake Race Jr.
- 950. Horse Keyhole Sr.
- 951. Horse Keyhole Jr.
- 952. Pony Keyhole Sr.
- 953. Pony Keyhole Jr.
- 954. Horse Speed & Control Sr.
- 955. Horse Speed & Control Jr.
- 956. Pony Speed & Control Sr.
- 957. Pony Speed & Control Jr.

# *Williams County Junior Fair Schedule of Events*

## **FRIDAY - 9/10/21**

### **Move - In - Day**

Animals MUST be weighed in upon arrival to the fairgrounds. No exceptions.  
Beef/Sheep/Goats - weighed at the show pavilion.  
Swine - weighed at the swine barn (unload in the wash rack)  
Poultry/Rabbits - weighed in at the poultry and rabbit barn.  
DUNF Forms must be turned in at the scales to be weighed.

### **Barn Superintendents**

In each of the barns the Superintendent for the species is listed. If you have questions or concerns on move in day, please be sure to contact the Superintendent of the Barn. Hours of effort has been put into organizing and set-up by the Junior Fair Board members....please respect that.

## **SATURDAY - 9/11/20**

8:00 AM Opening Ceremony - Show Pavilion  
8:30 AM Horse Showmanship - Horse Arena  
9:30 AM Goat Show - Show Pavilion  
10:00 AM FFA Projects in place at the Gillette  
1:00 PM Poultry Show - Show Pavilion

## **SUNDAY - 9/12/21**

8:00 AM Church Service - Show Pavilion  
9:00 AM Swine Show - Show Pavilion  
10:30 AM Horse Show - Horse Arena  
Gymkhana & Versatility  
7:00 PM Junior Fair Board Fun Night @  
Grandstands

## **MONDAY - 9/13/21**

8:30 AM Sheep Show - Show Pavilion  
2:00 PM Beef Show - Show Pavilion  
3:00 PM Jr. Horse Team Show - Horse Arena

## **TUESDAY - 9/14/21**

9:00 AM Dairy Show - Show Pavilion  
12:00 PM Rabbit Show - Show Pavilion  
6:30 PM Animal & Me Program - Show Pavilion

## **WEDNESDAY - 9/15/21**

5:00 PM Showmanship Sweepstakes  
Show Pavilion

## **THURSDAY - 9/16/21**

6:30 PM 4H Youth Parade & Youth Night  
Grandstands

## **FRIDAY - 9/17/21**

Morning Release Animals - If not in the Junior Fair Sale, animals may be released from 6:00 AM until gates open at 8:00 AM.

Evening Release Animals - If not in the Junior Fair Sale, animals may be released from 8:00 PM until 11:00 PM.

## **SATURDAY 9/18/21**

9:30 AM Junior Fair Livestock Sale  
Show Pavilion  
4:00 PM All Livestock removed from the barns

*On behalf of the Directors of the Williams County Agricultural Society, THANK YOU. We extend our sincere appreciation to our Williams County Extension Office, 4H Advisory Council, 4H & FFA Advisors, the exhibitors, the parents, the mentors, the volunteers and our very own Williams County Junior Fairboard members for everything all of you do to support the 4H and FFA programs and the GREAT WILLIAMS COUNTY FAIR! We are very humbled and grateful to serve all of you!*

# *Williams County Senior Fair Schedule of Events*

## **FRIDAY - 9/10/21**

Senior Fair and still exhibits received in the Gillette Building from 8:00 AM until 7:00 PM. New for 2019 All exhibitors must pay an Exhibitor Registration fee of \$5.00 at the Fair Office.

## **SATURDAY - 9/11/21**

### **Veterans Day 9AM to 9PM**

9:00 AM Flag Raising Ceremonies - Infield  
9:00 AM 9/11 Fundraiser—Grandstand  
9:00 AM Judging Baked Goods - Gillette Bldg.  
12:00 PM Flower Show Judging - Gillette Bldg.  
2:00 PM Horticulture Judging - Gillette Bldg.  
5:00 PM King & Queen Coronation  
Entertainment Stage  
5:00 PM Open ARBA Rabbit Show—Show  
Pavillion  
7:00 PM Pete Schlegel—Grandstands

## **SUNDAY - 9/12/21**

11:00 AM Horse Pulls—Grandstand  
4:00 PM Kids Fishing Derby - Pond  
7:00 PM Jr. Fair Board Fun Night—  
Grandstands  
7:00 PM Jess Kellie Adams—Midway Stage

## **MONDAY - 9/13/21**

### **Kids Day 9AM to 3PM**

9 to 3 PM Kids Day Events - See Fair Book  
5:30 PM Kids Bike Giveaway - Free Stage  
7:00 PM High School Band Show - Grandstands  
7:00 PM Magic Show—Midway Stage

## **TUESDAY - 9/14/21**

### **Senior & Disability Day 9AM to 3PM**

6:00 PM Cheer Off Competition - Grandstands  
7:00 PM Weekend Warriors—Midway Stage

## **WEDNESDAY - 9/15/21**

### **Women's Day 9AM to 3PM**

12:00 PM Show 2 Flower Show Judging -  
Gillette Building  
1:00 PM Harness Racing - Grandstands  
7:00 PM Bridging the Garp—Midway Stage

## **THURSDAY - 9/16/21**

### **Commodity Day**

6:30 PM Youth Night in the Grandstands  
7:00 PM Bridge County Band—Midway Stage

## **FRIDAY - 9/17/21**

10:00 AM Rain Date - Harness Racing  
6:00 PM Demolition Derby - Grandstands  
7:00 PM Elektrik Circus—Midway Stage

## **SATURDAY - 9/18/21**

6:00 PM Truck Pulls—Infield  
7:00 PM Cook & Belle—Midway Stage

# Williams County Senior Fair Gillette & Still Exhibits - Book 8

Division  
Superintendent  
Danyl Wortkoetter

## HORTICULTURE DIVISION

Assistant  
Superintendent  
Sam Farmer



### To make entry in the Division you must Purchase an Exhibitor Pass for \$20

Send in your entries early and avoid the lines and time waiting. In making entries use book, class, lot, description.

#### Division Rules

1. Entries will be accepted Friday Sept. 10th from 8:00 am to 8:00 pm. All exhibits MUST be in place by 12:00 pm Sat. Sept. 11th. Judging @ 2pm.
2. Each entry can be listed in one category only.
3. Exhibits in this department are open to all counties and states with fairs that are open to Williams County.
4. To make entry to any class in the Horticulture Division you must purchase an Exhibitors Pass.
5. The Exhibitors Pass is a weekly gate pass.
6. All entries must have been canned in current season.
7. Standard pints and quart jars and standard jelly glasses must be used. Any other jars will be disqualified.
8. Vegetables and other entries will be judged by one Judge system and are open to the public.
9. Display exhibits cannot be entered for single exhibits.
10. Exhibitors are limited to two entries per premium.
11. Exhibitors shall correctly name, on ticket, the entry as to variety.
12. Premiums will be mailed the first business day after the annual fair.
13. Exhibits will be released from 9 am until 12 pm on Sept. 19th.
14. All exhibits MUST be removed. If not removed by 12 noon on Sun. 9/20, exhibits will be disposed of.
15. The Williams County Agricultural Society is not responsible for theft or loss.

#### Ernie Ricks Corn Contest

Variety Premiums: 1st -\$5; 2nd -\$3

1. Any grower may exhibit two piles of corn and must have 10 ears of each variety.

2. Each variety will be judged
3. First place winner from each variety will be entered in the Ernie Ricks Corn Sweepstakes. CORN MUST BE GROWN IN 2021.

#### Class 1 (10 Ears Corn)

- 8 1 100 Northrup King
- 8 1 101 Stewart
- 8 1 102 Pioneer hybrid
- 8 1 103 Rupp seed
- 8 1 104 DeKalb
- 8 1 105 Golden Harvest
- 8 1 106 Specialty
- 8 1 107 Seed Consultants
- 8 1 108 Brodbeck's
- 8 1 109 Select Seed
- 8 1 110 Garst
- 8 1 111 Becks
- 8 1 112 Any others

Ernie Ricks Corn Sweepstakes places

Premiums: 1st \$25.00; 2nd \$20.00; 3rd \$15.00; 4th \$10.00; 5th \$5.00

- 8 1 114 1st Place:
- 8 1 115 2nd Place:
- 8 1 116 3rd Place:
- 8 1 117 4th Place:
- 8 1 118 5th Place:

#### Class 2 -Agricultural Oddities

Premiums: 1st -\$3.00, 2-\$2.00, 3-\$1.00 unless stated different. All entries must have exhibitor's name, the variety, the count or measurements on the ticket attached.

- 8 2 200 Tallest stalk of corn with ear, WITHOUT roots
- 8 2 201 Tallest sunflower stalk, WITHOUT roots
- 8 2 202 Single longest ear
- 8 2 203 Single biggest ear around
- 8 2 204 Single heaviest ear by weight
- 8 2 205 Soybean plant with most pods.

NO TAPED-ON BRANCHES. COUNT MUST BE ON TAG.

- 8 2 206 Any odd growth on any vegetable
- 8 2 207 Decorated oddities
- 8 2 208 Largest diameter Sunflower head
- 8 2 209 Heaviest sunflower head
- 8 2 210 Scarecrow \$5.00 \$3.00 \$2.00



## BOOK 8 - HORTICULTURE (cont')

### Hay Rules:

Premiums: 1st -\$3.00, 2-\$2.00, 3-\$1.00.

1. One slice square baled hay neatly tied.
2. Must be this year's hay and grown by exhibitor.
3. Limit one entry per class.

8 2 213 Hay-Alfalfa

8 2 214 Hay-Clover

8 2 215 Hay-Mixed/ Grass

### Class 3 -Popcorn and Sweet Corn

Premium: 1st -\$2.00, 2nd -\$1.00

8 3 300 Popcorn 10 ears, yellow

8 3 301 Popcorn 10 ears, white

8 3 302 Popcorn 10 ears, strawberry

8 3 303 Popcorn 10 ears, Tom Thumb

8 3 304 Popcorn 10 ears, any other variety

8 3 305 Sweet corn, 6 ears, yellow

8 3 306 Sweet corn, 6 ears, white

8 3 307 Sweet corn, 6 ears, bi-color

8 3 308 6 ears of Indian corn

### Class 4 -Grains and Honey

Premiums: 1st -\$3.00, 2-\$2.00, 3-\$1.00

8 4 400 Wheat, any variety (1qt glass jar)

8 4 401 Oats, any named variety (1qt glass jar)

8 4 402 Soybeans, any named variety (1qt glass jar)

8 4 403 Alfalfa (1qt glass jar)

8 4 404 Timothy

8 4 405 Mammoth

8 4 406 Red Clover

8 4 407 Any other (named)

### Honey

Premiums: 1st -\$5.00, 2-\$3.00, 3-\$2.00

8 4 408 Comb honey -3 each

8 4 409 Extracted White — 1 lb. Queen line jars, 3ea

8 4 410 Extracted Amber — 1 lb. Queen line jars, 3ea

8 4 411 Extracted Dark — 1 lb. Queen line jars, 3ea

8 4 412 Chunk Honey, 3 jars

8 4 413 Extracting Frame of Honey any size

8 4 414 Beeswax 3lbs minimum

8 4 415 Beeswax candles dipped, 1 pr.

8 4 416 Beeswax candles molded, 1 pr.

8 4 417 Beeswax candles made with bees wax foundation, 1 pair

8 4 418 Bees with Queen (observation hive)



8 4 419 Honey Exhibit- must contain education information, 5 jars of honey, comb honey, Bees wax, and any other hive related products (such as candles, Honey candies, pollen, frames of honey, etc.)

\$15.00 \$10.00 \$5.00

### Class 5 – Vegetables

Potatoes (5)

8 5 500 Red \$2.00 \$1.00

8 5 500 White \$2.00 \$1.00

8 5 502 Yellow \$2.00 \$1.00

8 5 503 Sweet \$2.00 \$1.00

8 5 504 Any other, named \$2.00 \$1.00

8 5 505 3 largest by weight \$2.00 \$1.00

8 5 506 Heaviest white (1) \$2.00 \$1.00

8 5 507 Largest diameter (1) \$2.00 \$1.00

### Red Beets (5)

8 5 508 Baby gladiator \$2.00 \$1.00

8 5 509 Yellow \$2.00 \$1.00

8 5 510 Detroit dark \$2.00 \$1.00

8 5 511 Any other named variety \$2.00 \$1.00

### Turnips (5)

8 5 512 Purple top \$2.00 \$1.00

8 5 513 White top \$2.00 \$1.00

### Parsnips (5)

8 5 514 Parsnips \$2.00 \$1.00

### Carrots (5)

8 5 515 Nantes \$2.00 \$1.00

8 5 516 Danvers half long \$2.00 \$1.00

8 5 517 Red cored chantey \$2.00 \$1.00

8 5 518 Longest \$2.00 \$1.00

8 5 519 Largest around \$2.00 \$1.00

8 5 520 Any Variety \$2.00 \$1.00

### Onions (5)

8 5 521 Bermuda, white \$2.00 \$1.00

8 5 522 Sweet Spanish, yellow \$2.00 \$1.00

8 5 523 Red any variety named \$2.00 \$1.00

8 5 524 Multiplier (1 qt. basket) \$2.00 \$1.00

8 5 525 Largest round, named \$2.00 \$1.00

8 5 526 Largest by weight, named \$2.00 \$1.00

### Tomatoes (5)

8 5 527 Canning, named \$2.00 \$1.00

8 5 528 Yellow, named \$2.00 \$1.00

8 5 529 Slicers, named \$2.00 \$1.00

8 5 530 Cherry red, 10 named \$2.00 \$1.00

8 5 531 Yellow salad, named \$2.00 \$1.00

8 5 532 Paste, 10 named \$2.00 \$1.00

8 5 533 Largest by weight \$2.00 \$1.00

8 5 534 Any other variety, named \$2.00 \$1.00

### Peppers (3)

8 5 535 Large green \$2.00 \$1.00

8 5 536 Large red \$2.00 \$1.00

8 5 537 Large yellow \$2.00 \$1.00

8 5 538 Large purple \$2.00 \$1.00

8 5 539 Any other variety, named \$2.00 \$1.00

## BOOK 8 - HORTICULTURE (cont')

### CLASS 5 Vegetables continued

#### Hot Peppers (5)

- 8 5 540 Jalapeno \$2.00 \$1.00
- 8 5 541 Hungarian wax \$2.00 \$1.00
- 8 5 542 Habeneros \$2.00 \$1.00
- 8 5 543 Mixed \$2.00 \$1.00
- 8 5 544 Any other variety \$2.00 \$1.00

#### Cabbage (1 head)

- 8 5 545 Flat dutch \$2.00 \$1.00
- 8 5 546 Red \$2.00 \$1.00
- 8 5 547 Stonehead, named \$2.00 \$1.00
- 8 5 548 Chinese \$2.00 \$1.00
- 8 5 549 Largest by weight \$2.00 \$1.00
- 8 5 550 Any other variety named \$2.00 \$1.00

#### Cucumbers

- 8 5 551 Slicer (4) \$2.00 \$1.00
- 8 5 552 Pickling (6) \$2.00 \$1.00
- 8 5 553 Any other variety (4) \$2.00 \$1.00

#### Class 6 Beans, Melons, Squash,

##### Misc. Beans (Shelled) 1qt jar

- 8 6 600 Navy or soup \$2.00 \$1.00
- 8 6 601 Red kidney \$2.00 \$1.00
- 8 6 602 Any other variety, named \$2.00 \$1.00

##### Beans in Pod (10)

- 8 6 603 Purple \$2.00 \$1.00
- 8 6 604 Yellow \$2.00 \$1.00
- 8 6 605 Green \$2.00 \$1.00
- 8 6 606 Lima \$2.00 \$1.00

##### Melons (one) Must name variety

- 8 6 610 Watermelon \$3.00 \$2.00
- 8 6 611 Watermelon, largest diameter \$3.00 \$2.00
- 8 6 612 Watermelon, largest by weight \$3.00 \$2.00
- 8 6 613 Muskmelon \$3.00 \$2.00
- 8 6 614 Muskmelon, largest by weight \$3.00 \$2.00
- 8 6 615 Honeydew \$3.00 \$2.00
- 8 6 616 Any other named variety \$3.00 \$2.00

##### PUMPKINS (one)

- 8 6 620 Pie, any variety named \$2.00 \$1.00
- 8 6 621 White \$2.00 \$1.00
- 8 6 622 Any other variety named \$2.00 \$1.00
- 8 6 623 Largest by diameter \$10.00 \$7.00 \$5.00
- 8 6 624 Largest by weight \$10.00 \$7.00 \$5.00  
(must have certified weight slip from any where)

##### Squash (two) Must name variety

- 8 6 630 Summer yellow \$2.00 \$1.00
- 8 6 631 Scallop, any variety, named \$2.00 \$1.00
- 8 6 633 Zucchini \$2.00 \$1.00
- 8 6 634 Turk's turban \$2.00 \$1.00
- 8 6 635 Hubbard (1) \$2.00 \$1.00
- 8 6 636 Butternut \$2.00 \$1.00
- 8 6 637 Spaghetti \$2.00 \$1.00
- 8 6 638 Cushaw (1) \$2.00 \$1.00
- 8 6 639 Any other variety, named \$2.00 \$1.00



##### Miscellaneous - Must name variety

- 8 6 645 Rutabaga (1) \$2.00 \$1.00
  - 8 6 646 Broccoli (3 heads) \$2.00 \$1.00
  - 8 6 647 Kohlrabi (3) \$2.00 \$1.00
  - 8 6 648 Cauliflower (1 head) \$2.00 \$1.00
  - 8 6 649 Brussel sprouts, any variety (8) \$2.00 \$1.00
  - 8 6 650 Eggplant (2) \$2.00 \$1.00
  - 8 6 651 Radish (plate of any variety) \$2.00 \$1.00
  - 8 6 652 Salsify (plate of 6) \$2.00 \$1.00
  - 8 6 653 Swiss chard (2 stalks) \$2.00 \$1.00
  - 8 6 654 Rhubarb (6 stalks) \$2.00 \$1.00
  - 8 6 655 Celery (1 bunch) \$2.00 \$1.00
  - 8 6 656 Horseradish (6 roots) \$2.00 \$1.00
  - 8 6 657 Dill (3 stalks, fresh) \$2.00 \$1.00
  - 8 6 658 Leeks (2) \$2.00 \$1.00
  - 8 6 659 Garlic (3) \$2.00 \$1.00
  - 8 6 660 Hops (1 plant) \$2.00 \$1.00
  - 8 6 661 Zipper Peas (10) \$2.00 \$1.00
  - 8 6 662 Okra 5 pods \$2.00 \$1.00
  - 8 6 663 Collection of herbs \$2.00 \$1.00
  - 8 6 664 Apple gourd (1) \$2.00 \$1.00
  - 8 6 665 Basket of gourds, 2013 (fresh assorted with stems attached) \$2.00 \$1.00
  - 8 6 666 Basket of gourds, dried \$2.00 \$1.00
  - 8 6 667 Display a peck market basket of home grown garden produce. Filler allowed \$5.00 \$3.00
  - 8 6 668 Anything not listed \$2.00 \$1.00
  - 8 6 669 Garden Exhibit (see below)
- Premiums: 1st -\$25; 2nd -\$20; 3rd -\$15; 4th \$10; 5th -\$5  
A 24"x 24" container will be provided for display. Each exhibit is to consist of:
1. Three different root vegetables
  2. Three different pod vegetables
  3. Red, yellow and miniature tomatoes
  4. One head cabbage. To make the display full, fill with any other vegetable.
- ##### Class 7 -Jellies, butters, jams, pickles
- All premiums are: \$3.00 (first), \$2.00 (second) unless otherwise stated. Products of 2021 must be shown in clear glass or standard jelly glasses. Can lids must not be covered. NO PARAFFIN. Jellies 1/2 or 1pt. Glass jar, named
- 8 7 700 Blackberry
  - 8 7 701 Elderberry
  - 8 7 702 Currant
  - 8 7 703 Apple
  - 8 7 704 Red Raspberry
  - 8 7 705 Black Raspberry
  - 8 7 706 Grape
  - 8 7 707 Plum
  - 8 7 708 Any other variety, named Butters
  - 8 7 709 Apple
  - 8 7 710 Peach
  - 8 7 711 Pear
  - 8 7 712 Any other, named

**BOOK 8 - HORTICULTURE (cont')**

**CLASS 7 Jellies, Butters, Jams & Pickles continued  
Jams & Preserves 1/2 or 1 pt. glass jar, named**

- 8 7 713 Apple
- 8 7 714 Peach
- 8 7 715 Pear
- 8 7 716 Thimbleberry
- 8 7 717 Strawberry
- 8 7 718 Any other, named

**Pickles in pint or quart jar**

- 8 7 719 Sweet whole
- 8 7 720 Sweet chunk
- 8 7 721 Cucumbers, small whole
- 8 7 722 Cucumbers, sliced
- 8 7 723 Cucumbers, dill
- 8 7 724 Hot peppers
- 8 7 725 Any other, named

**Relishes, Sauces & Miscellaneous**

- 8 7 726 Bean salad
- 8 7 727 Beets, pickled
- 8 7 728 Salsa
- 8 7 729 Sauerkraut
- 8 7 730 Pickle relish
- 8 7 731 Corn relish
- 8 7 732 Spaghetti sauce
- 8 7 733 Chili sauce
- 8 7 734 Any other, named

**Fruit in pint or quart jars**

- 8 7 735 Apricots
- 8 7 736 Red or black raspberries
- 8 7 737 Red cherries
- 8 7 738 Black cherries
- 8 7 739 Peaches
- 8 7 740 Pears
- 8 7 741 Plums
- 8 7 742 Applesauce
- 8 7 743 Spiced fruit
- 8 7 744 Grape juice
- 8 7 745 Fruit cocktail
- 8 7 746 Pineapple
- 8 7 747 Any other, named
- 8 7 748 Display of any 6 different fruits \$10.00 \$5.00

**Vegetables in pint or quart jars**

- 8 7 749 Beets
- 8 7 750 Lima beans
- 8 7 751 Green string beans
- 8 7 752 Yellow string beans
- 8 7 753 Carrots, whole or sliced
- 8 7 754 Corn
- 8 7 755 Peas
- 8 7 756 Asparagus, spears or cut
- 8 7 757 Cauliflower
- 8 7 758 Pumpkin



- 8 7 759 Tomatoes, whole red or yellow
  - 8 7 760 Tomato juice
  - 8 7 761 Vegetable soup
  - 8 7 762 Any other
  - 8 7 763 Display of any 6 different vegetables
  - 8 7 764 Display canned meal (6 jars)
- Canned meal is to include meat, potato, vegetable, fruit, juice or soup, and pickle or salad. \$10.00 \$5.00

**Meat in pint or quart jar**

- 8 7 765 Beef
- 8 7 766 Pork
- 8 7 767 Chicken
- 8 7 768 Venison
- 8 7 769 Fish
- 8 7 770 Mincemeat
- 8 7 771 Sausage
- 8 7 772 Any other, named

**Class 8 -Dehydrated fruits & vegetables Pint**

- 8 8 800 Peaches \$2.00 \$1.00
- 8 8 801 Pears \$2.00 \$1.00
- 8 8 802 Apricots \$2.00 \$1.00
- 8 8 803 Bananas \$2.00 \$1.00
- 8 8 804 Fruit leathers \$2.00 \$1.00
- 8 8 805 Apple \$2.00 \$1.00
- 8 8 806 Strawberry \$2.00 \$1.00
- 8 8 807 Any other, named \$2.00 \$1.00
- 8 8 808 Peppers \$2.00 \$1.00
- 8 8 809 Soup \$2.00 \$1.00
- 8 8 810 Onions \$2.00 \$1.00
- 8 8 811 Carrots \$2.00 \$1.00
- 8 8 812 Celery \$2.00 \$1.00
- 8 8 813 String of hot peppers (String of peppers should measure 18" from stem to tip) \$2.00 \$1.00
- 8 8 814 Dehydrated herbs \$2.00 \$1.00
- 8 8 815 Beef jerky \$2.00 \$1.00
- 8 8 816 Any other \$2.00 \$1.00

**Miscellaneous**

- 8 8 817 Eggs, best doz. Any kind \$2.00 \$1.00
- 8 8 818 Eggs, best doz. Brown \$2.00 \$1.00
- 8 8 819 Eggs, best doz. White \$2.00 \$1.00
- 8 8 820 Lard \$2.00 \$1.00
- 8 8 821 Homemade soap (1 cake) \$2.00 \$1.00
- 8 8 822 Homemade Hand Lotion (1) \$2.00 \$1.00
- 8 8 823 Maple syrup light amber 1 qt. \$5.00 \$3.00 \$2.00
- 8 8 824 Maple syrup med. amber 1 qt. \$5.00 \$3.00 \$2.00
- 8 8 825 Maple syrup dark amber 1 qt. \$5.00 \$3.00 \$2.00
- 8 8 826 Maple Candy, 5 pcs. \$5.00 \$3.00 \$2.00

**Class 9 - Apples, pears, plums, grapes Apples, home grown (5)**

- 8 9 900 Jonathan \$2.00 \$1.00
- 8 9 901 Red delicious \$2.00 \$1.00
- 8 9 902 Yellow delicious \$2.00 \$1.00
- 8 9 903 McIntosh \$2.00 \$1.00
- 8 9 904 Northern spy \$2.00 \$1.00

**BOOK 8 - HORTICULTURE (cont')****Class 9 - Apples, pears, plums, grapes Apples, home grown (5) - continued**

- 8 9 905 Crabapples \$2.00 \$1.00
- 8 9 906 Any variety, named \$2.00 \$1.00
- 8 9 907 Pears (5) Any variety \$2.00 \$1.00
- 8 9 908 Plums (5) \$2.00 \$1.00
- 8 9 909 Other \$2.00 \$1.00 Grapes, 3 bunches
- 8 9 910 Concord (purple) \$2.00 \$1.00
- 8 9 911 Niagara (white) \$2.00 \$1.00
- 8 9 912 Any variety, named \$2.00 \$1.00

**Class 10 - Youth Class**

Judging set for Sat. Sept. 7th if judges are available.

Premiums: 1st - \$3.00, 2nd - \$2.00, 3rd - \$1.00

**Rules:**

1. Open to all youth 4-H age of any County.
2. Youth ages 13—19 must purchase a \$5 registration fee. Youth ages 12 and under will receive awards only, no premiums.
3. Entries MUST BE properly named.
4. Exhibitors may make TWO ENTRIES PER CLASS
5. All entries will be judged on TABLE QUALITY.

**Youth Potatoes (5)**

- 8 10 1000 White, any variety named
- 8 10 1001 Red, any variety named
- 8 10 1002 Sweet, any variety named
- 8 10 1003 Any other variety, named
- 8 10 1004 Largest by diameter (1)

**Youth Beets (5)**

- 8 10 1005 Table, named Youth Turnips (5)
- 8 10 1006 Named

**Youth Parsnips (5)**

- 8 10 1007 Named

**Youth Carrots (5)**

- 8 10 1008 Named

**Youth Onions (5)**

- 8 10 1009 Yellow
- 8 10 1010 White
- 8 10 1011 Red
- 8 10 1012 Largest by diameter (1)

**Youth Tomatoes**

- 8 10 1020 Canning (5)
- 8 10 1021 Slicer (5)
- 8 10 1022 Salad (10)
- 8 10 1023 Heaviest (1)

**Youth Peppers (3) named**

- 8 10 1024 Large green
- 8 10 1025 Large red
- 8 10 1026 Large yellow
- 8 10 1027 Hot peppers

**Youth Cabbage (1 head) named**

- 8 10 1029 Round
- 8 10 1030 Flat
- 8 10 1031 Red
- 8 10 1032 Largest by diameter, any variety
- 8 10 1033 Heaviest head, any variety

**Youth Cucumbers**

- 8 10 1034 4 slicers
- 8 10 1035 Plate of pickling (6)

**Youth Watermelon (1)**

- 8 10 1040 Any variety, named
- 8 10 1041 Largest diameter
- 8 10 1042 Largest by weight

**Youth Muskmelon (1)**

- 8 10 1043 Any variety, named
- 8 10 1044 Largest by weight

**Youth Pumpkins (1) named**

- 8 10 1050 Paint a jack-o-lantern (Youth Only) \$5.00 \$3.00 \$2.00

- 8 10 1051 Any variety pie
- 8 10 1052 Any variety field
- 8 10 1053 Largest by diameter
- 8 10 1054 Heaviest

**MUST HAVE CERTIFIED WEIGHT SLIP FROM ANYWHERE****Youth Squash (2) named**

- 8 10 1060 Summer yellow
- 8 10 1061 Acorn
- 8 10 1062 Butternut
- 8 10 1063 Zucchini
- 8 10 1064 Turk's turban
- 8 10 1065 Any other variety, named

**Youth Beans**

- 8 10 1070 Green string (10)
- 8 10 1071 Yellow
- 8 10 1072 Lima
- 8 10 1073 Any other variety

**Youth Gourds**

- 8 10 1074 Ornamental (5)

**Youth Popcorn**

- 8 10 1080 White, 10 ears
- 8 10 1081 Yellow, 10 ears
- 8 10 1082 Red, 10 ears

**Class 11 - Youth Canning-Ball Fresh Preserving**

Premiums:

1st -\$3.00, 2-\$2.00, 3-\$1.00 unless stated different.

**Youth Fruit-pints or quarts**

- 8 11 1100 Cherries, red or black
- 8 11 1101 Peaches
- 8 11 1102 Pears
- 8 11 1103 Applesauce

**Youth Vegetables pints or quarts**

- 8 11 1110 Beans, green
- 8 11 1111 Beets
- 8 11 1112 Carrots, whole or sliced
- 8 11 1113 Tomatoes
- 8 11 1114 Dill Pickles, any variety
- 8 11 1115 Sweet Pickles, any variety
- 8 11 1116 Jam, any variety
- 8 11 1117 Jelly, any variety





# *Williams County Senior Fair Gillette & Still Exhibits - Book 8*

Division  
Superintendent  
Danyel Wortkoetter

Assistant  
Superintendent  
Sam Farmer

## **FLORICULTURE DIVISION**

**Committee Members**  
**Pioneer Garden Club, Pulaski Garden Club**  
**Williams County Master Gardeners**



### **2021 Williams County Fair Flower Show Flower Show Rules**

1. All Exhibitors ages 13 and up must purchase an Exhibitors Pass for \$20. the Exhibitors Pass is a weekly gate pass. Ages 12 and under are free but will receive awards only, no premiums.
2. Any Garden Club will require no entry fee; however, an exhibitor's number for a club must be obtained from the Fair board. No individual can exhibit using the club exhibitor number.
3. Entries are open to anyone who wishes to exhibit with the exception of classes 5&8, which are open to Garden Clubs only.
4. Each entry must be accompanied by an exhibitor's tag correctly filled in with the name, address, exhibitor number, section and class. Juniors must list age on entry tag. Exhibitor numbers are obtained from the Fair Office on or before the Friday before the first flower show.
5. All exhibits for the first show must be entered Fri., Sept. 10, from 9 am to 8 pm . All exhibits must be in place by 10:30 am on 9/11 at the Gillette Cultural Arts Building, with judging to begin at noon, Saturday. The first show must be removed on Tuesday, Sept. 14, at 4:30 pm. Entries for the second show may be entered on Tues. Sept.14 from 6 pm to 8 pm or before Wed., Sept. 15. All exhibits must be in place by 10:30 am with judging to begin at noon. All exhibits will be removed on Sunday morning, Sept.19th after 9 am.
6. All specimen entries must be grown by the exhibitor and correctly named by variety. Exhibitors may enter more than one specimen per class, providing that each entry is a different named variety.
7. When the schedule calls for a definite number, as in floriculture exhibits, buds are considered a bloom and a greater or lesser number disqualifies the exhibit.
8. Exhibitors may enter as many classes in the Artistic Section as desired, but only one entry per premium number. Artistic Designs must be the work of the exhibitor. Plant material may be obtained from any source for use in arrangements.
9. Novice Exhibitor is anyone who enters competition for the first time or has not won a blue ribbon in a design class.
10. No artificial material will be permitted. Any dried, dyed and painted material may be used but fresh cut material must be featured unless otherwise stated. No painted fresh material will be permitted.
11. All plant material used in the artistic designs must be listed on a card accompanying the arrangements.
12. All containers and accessories should have the owner's name on them in an inconspicuous place.
13. All due care will be taken, but no responsibility is assumed for broken or lost articles.
14. In sections 3 & 11, the plant must have been in the possession of the exhibitor for at least 3 months.
15. All entries will be placed as directed by the placement committee.
16. If there is no entry in a class, the placement committee reserves the right to remove cards for those entries and place other entries accordingly.
17. Entries will be judged by Standard System of judging, by an accredited judge of the Ohio Association of Garden Clubs, Inc. The judge's decision is final. Judging is to be limited to four hours.
18. No one but the judge and one clerk from each Garden Club will be allowed on the floor during the judging, unless oral judging is requested.
19. Judges will disqualify any exhibit that does not meet the requirements of the class in which it is entered.
20. Premiums may be withheld if wilted flowers are not replaced in the arrangements.
21. THE BEST OF SHOW award will be given to any Junior and Senior in the Artistic Division for both shows.
22. The GREEN THUMB Award will be given to any Junior or Senior in the Floriculture Division for both shows.
23. The INDOOR GROWER award may be given to any Senior or Junior in the house plant division, first show only.
24. The PEOPLE'S AWARD will be given after the public's vote is counted.
25. Premiums will be mailed the first business day after the annual fair.

## **BOOK 9 - FLORICULTURE (cont')**

### **Standards For Judging**

In all classes, specimens should clean and water in containers, fresh.

### **SPECIMEN FLOWERS**

**Form**-perfection of form for type of flower. Symmetry very important for most cultivars.

**Color**-clear, rich, luminous color.

**Substance**-firm, crisp petals.

**Stem and Foliage**-clean, healthy foliage, strong straight stem (length in proportion to size of bloom).

**Size**- large blooms for type and variety.

Note: Classes asking for three of a variety, the three stems should be as identical in size, color and form as possible.

### **POTTED PLANTS -flowering and foliage**

Flowers, Quality and Quantity (if flowering plant)

Form and Symmetry of Plant

Health and Vigor of Foliage

Size of Plant and /or Flowers (typical of variety)

Grooming

Correct Labeling of Plant

Note: African violets should have only one crown to a pot.

Pots should be scrubbed, and plant should be clean.

### **PLANTER DIVISION RULES**

Shape and color of the container is exhibitor's choice. The Planter must be under 18" inside measurements. The planter is to be entered the first show and will stay all week and feature orange. The Herb Planter is under 18" and contain at least one herb.

**ARRANGEMENT ARTISTIC DESIGN CLASSES** - A design is the orderly arrangement of the component parts to each other and to their environment. For further explanations of designs see OAGC Handbook.

**ALFRESCO TABLE DESIGN** may be on a table, ground, bench or a tailgate. Service casual to semi-formal.

**COLLAGE DESIGN** is an abstract two-dimensional design done on a flat panel or board, using plant material and other diverse objects and giving an illusion of depth.

**DECORATED HAT** will be exhibited on a hat stand using dried materials.

**FANTASY FLOW DESIGN** is a three-dimensional creative design with a dominant form flowing away from it, establishing an additional creative form.

**FLOOR DESIGN** is a large design staged on the floor, or low platform. It may be abstract, traditional or creative design. Design must be a minimum of 4 feet with a maximum of 7 feet. Using dried materials.

**INTERPRETIVE DESIGN** conveys a message about the exhibitor feelings of the subject title. Any element of design can be used.

**TAPESTRY DESIGN** is a three dimensional creative solid-mass design with geometric closed silhouettes. Emphasis is on plant materials(s) massed by volume in the geometric form.

**SMALL DESIGN** should be more than 5" yet less than 12"; can use creative, Ikebana or traditional styles.

**TUBULAR DESIGN** is a three-dimensional creative design featuring dominant cylindrical forms.

**UNDERWATER DESIGN** is a three-dimensional creative design using one or more containers with some components placed under water to create interest.

**WREATH** is a design having the appearance of no beginning or end. These should be able to hang.

## **FLORICULTURE EXHIBITS**

### **BOOK 9 SECTION 1 AND 2**

Section 1: First Show Saturday, Sept. 11, 2020

Section 2: Second Show: Wednesday, Sept. 15, 2020

Premiums: 1<sup>st</sup> \$1.00, 2<sup>nd</sup> \$.75, 3<sup>rd</sup> \$.50

### **ROSES**

9 1-2 1 HYBRID TEA ROSES, one bloom, disbudded with foliage attached

Note: Roses are best entered the day of judging-Saturday and Wednesday mornings before 10 a.m.

9 1-2 2 FLORIBUNDA & CLIMBING FLORIBUNDA

9 1-2 3 GRANDIFLORA & CLIMBING GRANDIFLORA

9 1-2 4 MINIATURE & CLIMBING MINIATURE

9 1-2 5 OLD GARDEN ROSES

9 1-2 6 POLYANTHA & CLIMBING POLYANTHA

9 1-2 7 SHRUB ROSE

### **SPECIAL VARIETIES**

9 1-2 8 Cockscomb, Variegated

9 1-2 9 Marigold, Fireball

9 1-2 10 Zinnia, Magellan, Yellow

### **ASTERS**

9 1-2 11 Perennial, 1 spray with foliage attached

9 1-2 12 Annual with foliage attached

### **BEGONIA**

9 1-2 13 Fibrous

9 1-2 14 Tuberosus

### **CALADIUM**

9 1-2 15 Any variety, 1 leaf

**CALENDULA**, disbudded with foliage attached

9 1-2 16 Large, same variety, 3 blooms

### **CELOSIA**

9 1-2 17 Crested, any variety, laterals removed

9 1-2 18 Plumed, any variety, laterals permitted

**CHRYSANTHEMUMS**, foliage attached

9 1-2 19 White, 1 spray

9 1-2 20 Yellow, 1 spray

9 1-2 21 Rust, red or bronze, 1 spray

9 1-2 22 Purple, 1 spray

9 1-2 23 Any other, 1 spray

### **CLEMATIS**

9 1-2 24 Any variety, 1 stem

### **CLEOME**

9 1-2 25 Any variety, 1 spike, seed pods left intact



## BOOK 9 - FLORICULTURE (cont')

### COLEUS

9 1-2 26 Trailing

9 1-2 27 Upright

### CORAL BELLS, Heuchera

9 1-2 28 Any variety, 1 leaf

### COREOPSIS

9 1-2 29 Any variety, 1 stem, foliage attached

### COSMOS (Excludes "Special Varieties")

9 1-2 30 Any variety, 1 bloom

### DAHLIA, disbudded with foliage attached (side buds left on disqualify specimen)

9 1-2 31 Under 4" any color, 1 bloom

9 1-2 32 4" to 8" Red, 1 bloom

9 1-2 33 4" to 8" Purple, 1 bloom

9 1-2 34 4" to 8" White, 1 bloom

9 1-2 35 4" to 8" Yellow, 1 bloom

9 1-2 36 4" to 8" Orange, 1 bloom

9 1-2 37 4" to 8" Any other color, 1 bloom

9 1-2 38 Over 8" Any color

### ECHINACEA (cone flower)

9 1-2 39 Any color, 1 stem

### GAILLARDIA

9 1-2 40 Any variety, 1 bloom

### GLADIOLUS, stems should not exceed 20" length from bottom floret down; side shoots must be removed, but foliage attached; proportion 2/3 bloom head to 1/3 stem all florets facing forward and bottom florets should be fresh

9 1-2 41 White, green, yellow

9 1-2 42 Orange, salmon, peach

9 1-2 43 Pink, red, rose

9 1-2 44 Lavender, purple, blue

9 1-2 45 Any other color

9 1-2 46 Miniature or small 100-200 size, any color

### HELIANTHUS

9 1-2 47 Any variety, 1 stem

### HERB

9 1-2 48 Basil, 1 stem

9 1-2 49 Chives, 3 stems with flowers

9 1-2 50 Dill, 1 stem

9 1-2 51 Lavender, 3 stems

9 1-2 52 Mint, 1 stem

9 1-2 53 Parsley, 1 stem other than Curly Leaf

9 1-2 54 Rosemary, 1 stem

9 1-2 55 Sage

9 1-2 56 Any other variety, 1 stem

### HOSTA

9 1-2 57 Mini Solid: leaf under 6 square inches, 1 leaf

9 1-2 58 Mini variegated

9 1-2 59 Small solid: leaf size 6-30 square inches, 1 leaf

9 1-2 60 Small variegated

9 1-2 61 Medium solid: leaf size 31-64 square inches, 1 leaf

9 1-2 62 Medium variegated

9 1-2 63 Large solid: leaf size 65-120 inches, 1 leaf

9 1-2 64 Large variegated

9 1-2 65 Giant solid: leaf size over 121 square inches, 1 leaf

9 1-2 66 Giant variegated

### MARIGOLD, large flowered, disbudded with foliage attached

9 1-2 67 Orange

9 1-2 68 Yellow

9 1-2 69 White

### MARIGOLD, Small to mid-sized spray forms, not disbudded, foliage attached

9 1-2 70 Orange, 1 spray

9 1-2 71 Yellow, 1 spray

9 1-2 72 Multi-colored, 1 spray

### ORNAMENTAL GRASSES

9 1-2 73 Any variety 3 stems/plumage

### RUDBECKIA, 1 stem disbudded, with foliage attached

9 1-2 74 Any variety

### SALVIA

9 1-2 75 Any blue variety

9 1-2 76 Any red variety

### SEDUM

9 1-2 77 Small - Any Variety Under 3"

9 1-2 78 Large - Any Variety Over 3"

### SNAPDRAGON

9 1-2 79 Any variety

### SUNFLOWER - Other than Autumn Blend

9 1-2 80 Yellow or yellow blend, 1 bloom, disbudded, with foliage attached

9 1-2 81 Red or red blend, 1 bloom, disbudded, with foliage attached

9 1-2 82 Any other color, 1 stem, disbudded, with foliage attached

### VINCA

9 1-2 83 Any variety, 1 stem

### ZINNIA - Other than Magelin - Coral

9 1-2 84 Small Flowered 1-3 1/2 "1 stem, disbudded, with foliage attached

9 1-2 85 Dahlia type, any variety, 1 stem disbudded, with foliage attached

9 1-2 86 Cactus flowering, any variety 1 bloom, with foliage attached

### MISCELLANEOUS for specimens with no category

9 1-2 87 Flowering Vine, any variety, 1 stem (not to exceed 24" stem length)

9 1-2 88 Flowering Shrub, any variety, 1 stem (not to exceed 24" stem length)

9 1-2 89 Berried Branch, any variety, 1 stem (not to exceed 24" stem length)

9 1-2 90 Annual, Round Form, 1 bloom (stem in proportion to bloom size), disbudded

9 1-2 91 Annual, Spike Form, 1 stem (stem in proportion to bloom size) laterals permitted

9 1-2 92 Annual, Spray Form, 1 stem (stem in proportion to bloom size) laterals permitted

9 1-2 93 Biennial or Perennial, Round Form, any variety, 1 bloom (stem in proportion to bloom size), disbudded



**BOOK 9 - FLORICULTURE (cont')**

- 9 1-2 94 Biennial or Perennial, Spike Form, 1 stem (stem in proportion to bloom size), laterals permitted  
 9 1-2 95 Biennial or Perennial, Spray Form, 1 stem (stem in proportion to bloom size), laterals permitted  
 9 1-2 96 Flowering Bulb or Tuber  
 9 1-2 97 Unusual Bloom, any variety, shape or color  
**DRIED**, not to exceed 24" stem length (stays all week)  
 9 1 98 Static, any variety, 1 spray  
 9 1 99 Yarrow, any color, 2 stems  
 9 1 100 Any other variety, 1 stem

**PLANTS**

(Judged first show, stays all week)

**BOOK 9 SECTION 3**

Premiums: 1st \$2.00, 2nd \$1.50, 3rd \$1.25

- 9 3 1 African Violet, single bloom, any variety-1 crown per pot  
 9 3 2 African Violet, double bloom, any variety-1 crown per pot  
 9 3 3 Foliage plant, one variety, 6-8" pot  
 9 3 4 Flowering plant, one variety 6-8" pot  
 9 3 5 Cactus or succulent, one variety

**PLANTER DIVISION****BOOK 9 SECTION 4**

Premiums: 1st \$7, 2nd \$5, 3rd \$4

- 9 4 1 "Beach Bond Fire" Planter 12"-16" container, featuring orange  
 9 4 2 "Ocean Breezes" Planter 12"-16" container, Herb Planter, including at least one herb

**CLUB ARTISTIC DESIGNS****BOOK 9 SECTION 5**

Premiums: \$30 to each club with 1st, 2nd or 3rd ribbons

42"x 27" background panel required, dried or fresh materials

- 9 5 1 "Driftwood" Fantasy Flow Design  
 9 5 2 "Under the Sea" Underwater Design

**ARTISTIC DESIGNS****BOOK 9 SECTION 6**

First Show, Saturday, September 11, 2021

Premiums: 1st \$7, 2nd \$5, 3rd \$4

Background panel any size is optional for artistic designs

- 9 6 1 "Back to The Beach" Floor Design, Minimum 4 feet, Dried, Stays all week  
 9 6 2 "Sunset" Collage Design  
 9 6 3 "Beach Umbrella" Tubular Design  
 9 6 4 "5 O'Clock Somewhere" Interpretive Design  
 9 6 5 "Life Preserver" Wreath, Dried

**ARTISTIC DESIGNS****BOOK 9 SECTION 7**

Second Show, Wednesday, September 15, 2021

Premiums: 1st \$7, 2nd \$5, 3rd \$4

Background panel any size is optional for artistic designs

- 9 7 1 "Itsy Bitsy Polka Dot..." Small Design, 6"-12" Design  
 9 7 2 "Beach Picnic" Alfresco Table Design  
 9 7 3 "Board Walk" Mass Design  
 9 7 4 "Beach Hats" Decorated Hat, Dried

**JUNIOR DIVISION****BOOK 9 SECTION 9 AND 10**

Section 9-First Show: Saturday, September 11, 2021

Section 10- Second Show: Wednesday, September 15, 2021

Ribbons: Youth age 12 and under

Premiums: Youth age 13 and over 1st \$.75, 2nd \$.50, 3rd \$.25

**COSMOS**

- 9-10 1 Any variety, 1 stem-age under 12  
 9-10 2 Any variety, 1 stem-age 13 over

**MARIGOLD**, with foliage attached

- 9-10 3 Large type, 1 bloom, disbudded-age under 12  
 9-10 4 Large type, 1 bloom, disbudded-age 13 over  
 9-10 5 Small type, 1 spray-age under 12  
 9-10 6 Small type, 1 spray-age 13 over

**ZINNIA**, disbudded with foliage attached

- 9-10 7 Cactus flowered, 1 bloom-age under 12  
 9-10 8 Cactus flowered, 1 bloom-age 13 over  
 9-10 9 Dahlia flowered, 1 bloom-age under 12  
 9-10 10 Dahlia flowered, 1 bloom-age 13 over

**MISCELLANEOUS**

- 9-10 11 Annual round form, 1 bloom (stem in proportion to bloom size), disbudded-age under 12  
 9-10 12 Annual round form, 1 bloom (stem in proportion to bloom size), disbudded-age 13 over  
 9-10 13 Annual spike form, 1 stem (stem in proportion to bloom size), laterals permitted-age under 12  
 9-10 14 Annual spike form, 1 stem (stem in proportion to bloom size), laterals permitted-age 13 over  
 9-10 15 Annual spray form, 1 stem (stem in proportion to bloom size) -age under 12  
 9-10 16 Annual spray form, 1 stem (stem in proportion to bloom size) -age 13 over

**BOOK 9 SECTION 11 - PLANTS**

(Judged first show, stays all week)

Ribbons or Premiums 1st \$1.75, 2nd \$1.25 3rd \$1.00

- 9 11 1 Foliage or Flowering Plant, 1 variety, 6"-8" pot-age under 12  
 9 11 2 Foliage or Flowering Plant, 1 variety, 6"-8" pot-age 13 over

**BOOK 9 SECTION 12-PLANTER**

(Judged first show, stays all week)

Ribbons or Premiums: 1st \$7, 2nd \$5, 3rd \$4

- 6"- 12" Pot (Inside measurement) 3 or more plant varieties  
 9 12 1 "Sea Shells on Sea Shore" age under 12  
 9 12 2 "Sea Shells on Sea Shore" age 13 over

**BOOK 9 SECTION 13 - ARTISTIC DESIGNS**

First Show: Saturday, September 11, 2021

Ribbons or Premiums: 1st \$2.50, 2nd \$2.00, 3rd \$1.00

**AGE UNDER 12**

- 9 13 1 "Flip Flops" Interpretive Design

**AGE 13 OVER**

- 9 13 2 "Flip Flops" Interpretive Design

**BOOK 9 SECTION 14**

Second Show- Wednesday, September 15, 2021

Ribbons or Premiums: 1st \$2.50, 2nd \$2.00, 3rd \$1.00

**AGE UNDER 12**

- 9 14 1 "Sail Away" Design featuring a boat

**AGE 13 OVER**

- 9 14 2 "Sail Away" Design featuring a boat



# Williams County Senior Fair Gillette & Still Exhibits - Book 10

Superintendent  
Danyel Wortkoetter

## NEEDLEWORK CRAFTS DIVISION

Committee Members  
Laura Allion & Susan Walker



### BOOK 10 - Needlework & Crafts

**\*\*NEW\*\*** All items in Needlework Book 10 should be of NEW CONSTRUCTION. Any old or antique items will not be accepted. Those items can be entered under Book 12 Antiques and registered under the new textiles category.

All entries must be submitted by the last Friday in August. Tags can be picked up in the Secretary's office the following week. All items must be brought to the Gillette Cultural Arts Building on the THURSDAY BEFORE THE FAIR from 10am to 7pm. Judging of needlework and crafts will be on Friday at 9:00 am.

#### Rules:

1. Exhibits in this department are open to all counties. No articles may be exhibited more than two (2) years.
2. Any articles that previously have won a ribbon at this fair are not eligible.
3. All articles shown must be the work of the exhibitor or some member of his or her family.
4. Exhibitors must bring a written list of exhibits as they appear in the premium lists, and no article will be examined by the Secretary.
5. DO NOT Task the Secretary to make entries of any article not listed, as they will not be considered by the Judge.
6. No worn, soiled or unfinished article will be considered by the Judge.
7. Exhibitors may enter two entries per item number, but only one premium per item number / per exhibitor will be paid.
8. This department will be judged by appointed Judges.
9. The arrangement of all exhibits must be left to the Superintendent and the Assistants. They will assign locations and their decisions will be final on all questions that may arise.
10. Any disrespectful conduct on the part of the Exhibitors should be reported to the Judge or Superintendent who may reject any or all entries not properly made.

11. Any article shown and considered unworthy of first premium may be awarded second premium or none. No article will receive more than one premium.

12. There is no guarantee of the safety of exhibits, but all precautions possible will be taken to protect exhibits.

13. Premium cards have no value in receiving payment of premiums, as they are paid from Judges' books, which are final in all cases. Premiums will be mailed the first business day after the annual fair.

14. Items will be released on Sunday following the fair between 10 am to 2 pm.

15. NO ENTRIES ACCEPTED AFTER DEADLINE.

16. Anything left after 2pm Sunday can be picked up at the office during office hours.

17. Entry's are free for Ages 12 and under. Ages 13 and up must purchase an Exhibitors Pass for \$20. Ages 12 and under receive awards only, no premiums.

18. The Exhibitors Pass is a weekly gate pass.

**Needlework Scorecard Total 100%**

**Workmanship – 40%**

**Beauty and simplicity of design – 25%**

**Harmony of color and material – 25%**

**General appearance – 10%**

Enter by using Book-Class-Lot-Description

**Two Best of Show awards will be chosen by the judges from all needlework and craft entries.**

**Class 1 – Quilts, Hand Quilted & Comforters, Knotted**  
(For Baby Quilts & Comforters see Infant Items)

Premiums: 1st - \$8.00, 2nd -\$6.00, 3rd - \$4.00

- 10 1 1 Cross-Stitch or Hand Embroidered
- 10 1 2 Appliqué
- 10 1 3 Pieced, Two Colors
- 10 1 4 Pieced, Scrap Quilt
- 10 1 5 Pieced & Quilted
- 10 1 6 Lap Quilt
- 10 1 7 Crazy Quilt, new construction
- 10 1 8 Miniature Quilt under 15" x 18"
- 10 1 9 Comforter, Pieced & Knotted
- 10 1 10 Beginner Quilt (simple design by beginning quilter)
- 10 1 11 Quilt top under construction
- 10 1 12 T-Shirt Quilt
- 10 1 13 Quilt made from a kit
- 10 1 14 Not Listed



## BOOK 10 - NEEDLEWORK & CRAFTS (cont')

### Class 2 – Quilts, Longarm Machine Quilted

Premiums: 1st - \$8.00, 2nd -\$6.00, 3rd - \$4.00

- 10 2 1 Cross Stitch or Embroidered
- 10 2 2 Appliqué
- 10 2 3 Pieced, two colors
- 10 2 4 Pieced Scrap Quilt
- 10 2 5 Pieced & Quilted
- 10 2 6 Lap Quilt
- 10 2 7 Miniature Quilt (under 15" x 18")
- 10 2 8 Beginner Quilt (simple design by beginning quilter)
- 10 2 9 T-Shirt Quilt
- 10 2 10 Quilt made from a kit
- 10 2 11 Not Listed

### Class 3 – Quilts, Home Sewing Machine Quilted

Premiums: 1st - \$8.00, 2nd -\$6.00, 3rd - \$4.00

- 10 3 1 Cross Stitch or Embroidered
- 10 3 2 Appliqué
- 10 3 3 Pieced, two colors
- 10 3 4 Pieced, Scrap Quilt
- 10 3 5 Pieced & Quilted
- 10 3 6 Lap Quilt
- 10 3 7 Miniature Quilt (under 15" x 18")
- 10 3 8 Beginner Quilt (simple design by beginning quilter)
- 10 3 9 T-Shirt Quilt
- 10 3 10 Quilt made from a kit
- 10 3 11 Not Listed

### Class 4 – Bedspreads

Premiums: 1st - \$6.00, 2nd -\$4.00, 3rd - \$3.00

- 10 4 1 Crocheted
- 10 4 2 Embroidered
- 10 4 3 Pieced
- 10 4 4 Knitted
- 10 4 5 Not Listed

### Class 5 – Afghans

Premiums: 1st - \$7.00, 2nd -\$5.00, 3rd - \$3.00

- 10 5 1 Woven Fabric
- 10 5 2 Granny Square, any variation
- 10 5 3 Knitted
- 10 5 4 Cable Panel
- 10 5 5 Ripple
- 10 5 6 Hairpin Lace
- 10 5 7 Navajo
- 10 5 8 Afghan Stitch
- 10 5 9 Counted Cross Stitch on woven fabric
- 10 5 10 Lap Size (3' x 5' max)
- 10 5 11 Scrap Yarn
- 10 5 12 Mile-a-Minute
- 10 5 13 Not Listed

### Class 6 – Rugs

Premiums: 1st - \$4.00, 2nd -\$2.00, 3rd - \$1.00

- 10 6 1 Crocheted
- 10 6 2 Latch Hook
- 10 6 3 Braided
- 10 6 4 Woven
- 10 6 5 Hooked wool material
- 10 6 6 Not Listed

### Class 7 – Tablecloths

Premiums: 1st - \$3.00, 2nd -\$2.00

- 10 7 1 Crocheted
- 10 7 2 Cross Stitch
- 10 7 3 Hand Embroidered
- 10 7 4 Machine Embroidered
- 10 7 5 Holiday
- 10 7 6 Not Listed

### Class 8 – Lunch Cloths & Placemats (2)

Premiums: 1st - \$2.00, 2nd -\$1.00

- 10 8 1 Cross Stitch
- 10 8 2 Hand Embroidered
- 10 8 3 Machine Embroidered
- 10 8 4 Pieced Topper or Runner
- 10 8 5 Pieced Placemats (2)
- 10 8 6 Not Listed

### Class 9 – Pillowcases

Premiums: 1st - \$2.00, 2nd -\$1.00

- 10 9 1 Hand Embroidery
- 10 9 2 Cross Stitch
- 10 9 3 Not Listed

### Class 10 – Pot Holders (2) Dishcloths (2)

Premiums: 1st - \$1.50, 2nd -\$1.00

- 10 10 1 Knitted Pot Holders
- 10 10 2 Crocheted Pot Holders
- 10 10 3 Patchwork Pot Holders
- 10 10 4 Knitted Dishcloths
- 10 10 5 Crocheted Dishcloths
- 10 10 6 Not Listed

### Class 11 – Doll Clothes

Premiums: 1st - \$1.50, 2nd - \$1.00

- 10 11 1 Machine sewn
- 10 11 2 Hand sewn
- 10 11 3 Knitted
- 10 11 4 Crocheted
- 10 11 5 Not Listed

### Class 12 – Crocheting

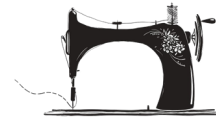
Premiums: 1st - \$1.50, 2nd -\$1.00

- 10 12 1 Centerpiece – over 14"
- 10 12 2 Doily – under 14"
- 10 12 3 Buffet or Vanity set
- 10 12 4 Dresser scarf
- 10 12 5 Table Topper or Runner
- 10 12 6 Not Listed

### Class 13– Crocheted Garments

Premiums: 1st - \$5.00, 2nd -\$3.00, 3rd - \$1.00

- 10 13 1 Ladies' Pullover Sweater
- 10 13 2 Man's Pullover Sweater
- 10 13 3 Adult Cardigan
- 10 13 4 Child's Sweater
- 10 13 5 Vest
- 10 13 6 Shawl
- 10 13 7 Not Listed



## **BOOK 10 - NEEDLEWORK & CRAFTS (cont')**

### **Class 14 – Crocheted Items (small)**

Premiums: 1st - \$3.00, 2nd -\$2.00, 3rd - \$1.00

- 10 14 1 Scarf
- 10 14 2 Hat or Cap
- 10 14 3 Slippers
- 10 14 4 Gloves or Mittens
- 10 14 5 Not Listed

### **Class 15 – Knitted Garments**

Premiums: 1st – \$5.00, 2nd -\$3.00, 3rd - \$1.00

- 10 15 1 Ladies' Pullover Sweater
- 10 15 2 Man's Pullover Sweater
- 10 15 3 Adult Cardigan
- 10 15 4 Child's Sweater
- 10 15 5 Vest
- 10 15 6 Shawl
- 10 15 7 Not Listed

### **Class 16 – Knitted Items (small)**

Premiums: 1st - \$3.00, 2nd -\$2.00, 3rd - \$1.00

- 10 16 1 Hat or Cap
- 10 16 2 Gloves or Mittens
- 10 16 3 Scarf
- 10 16 4 Slippers
- 10 16 5 Socks
- 10 16 6 Not Listed

### **Class 17 – Infant Items**

Premiums: 1st – 3.00, 2nd –\$2.00, 3rd - \$1.00

- 10 17 1 Sweater, crocheted
- 10 17 2 Sweater, knitted
- 10 17 3 Baby Outfit, crocheted, 2 or 3 pieces
- 10 17 4 Baby Outfit, knitted, 2 or 3 pieces
- 10 17 5 Booties, crocheted
- 10 17 6 Booties, knitted
- 10 17 7 Bibs (2)
- 10 17 8 Bonnet, crocheted
- 10 17 9 Bonnet, knitted
- 10 17 10 Dress, crocheted
- 10 17 11 Dress, knitted
- 10 17 12 Baby Afghan, crocheted
- 10 17 13 Baby Afghan, knitted
- 10 17 14 Baby Quilt, hand quilted
- 10 17 15 Baby Quilt, machine quilted
- 10 17 16 Baby Comforter, knotted
- 10 17 17 Baby coverlet, embroidered
- 10 17 18 Not Listed

### **Class 18 – Machine Sewing**

#### **Clothing Construction**

Premiums: 1st - \$3.00, 2nd -\$2.00, 3rd - \$1.00

- 10 18 1 Dress, Woman's, 1 or 2 piece
- 10 18 2 Outer Garment
- 10 18 3 Suit
- 10 18 4 Vest
- 10 18 5 Slacks
- 10 18 6 Skirt

- 10 18 7 Blouse or Top, woman's or girl's
- 10 18 8 Shirt, man's or boy's
- 10 18 9 Dress, child's
- 10 18 10 Child's Outfit, 2 pieces
- 10 18 11 Christening Gown
- 10 18 12 Costume, Adult
- 10 18 13 Costume, Child
- 10 18 14 Apron
- 10 18 15 Not Listed

### **Class 19 – Purse Making & Tote Bags**

Premiums: 1st - \$2.00, 2nd - \$1.00

- 10 19 1 Purse - Small
- 10 19 2 Purse - Medium
- 10 19 3 Purse - Large
- 10 19 4 Purse & Accessories to Match
- 10 19 5 Tote Bag

### **Class 20 – Pillows, Made Up**

Premiums: 1st - \$2.00, 2nd -\$1.00

- 10 20 1 Cross Stitch
- 10 20 2 Needlepoint
- 10 20 3 Counted Cross Stitch
- 10 20 4 Crocheted
- 10 20 5 Appliqué
- 10 20 6 Hooked wool or other medium
- 10 20 7 Hand Quilted
- 10 20 8 Pieced
- 10 20 9 Not Listed

### **Class 21 – Pictures (must be ready to hang)**

Premiums: 1st - \$4.00, 2nd - \$2.00

- 10 21 1 Needlepoint
- 10 21 2 Embroidery
- 10 21 3 Cross Stitch (not counted)
- 10 21 4 Sampler – Cross Stitch
- 10 21 5 Sampler - other
- 10 21 6 Wall Hanging - small (24" or under)
- 10 21 7 Wall Hanging - large (over 24")
- 10 21 8 Wall Hanging - quilted
- 10 21 9 Wall Hanging- hooked
- 10 21 10 Crewel
- 10 21 11 Appliqué
- 10 21 12 Counted Cross Stitch - small (5" x 7" or under)
- 10 21 13 Counted Cross Stitch - medium (up to 11" x 14")
- 10 21 14 Counted Cross Stitch - large (over 11" x 14")
- 10 21 15 Paper Cut Work
- 10 21 16 Pressed Flowers
- 10 21 17 Not Listed



## BOOK 10 - NEEDLEWORK & CRAFTS (cont')

### Class 22 – Seasonal Decorations

Premiums: 1st - \$2.00, 2nd - \$1.00

- 10 22 1 Table Decorations
- 10 22 2 Door Arrangement
- 10 22 3 Decorated Tree Ornament
- 10 22 4 Christmas Wall Hanging
- 10 22 5 Tree Skirt
- 10 22 6 Christmas stocking
- 10 22 7 Not Listed

### Class 23 – Misc. (needlework & related items)

Premiums: 1st - \$2.00, 2nd - \$1.00

- 10 23 1 Needlework Item
- 10 23 2 Crewel Embroidery

### Class 24 – Woodworking

Premiums: 1st - \$5.00, 2nd - \$3.00, 3rd - \$1.00

- 10 24 1 Hand Carved wood item small (12" or under)
- 10 24 2 Hand Carved wood item large (over 12")
- 10 24 3 Scroll Saw Item Small (12" or under)
- 10 24 4 Scroll Saw Item large (over 12")
- 10 24 5 Turned Wood Item small (12" or under)
- 10 24 6 Turned Wood Item large (over 12")
- 10 24 7 Handmade Wood Item Small (under 12")
- 10 24 8 Handmade Wood Item Medium (12" to 24")
- 10 24 9 Handmade Wood Item large (over 24")

### Class 25 – Card Making

Premiums: 1st - \$2.00, 2nd - \$1.00

#### Youth (up thru age 12)

- 10 25 1 Birthday
- 10 25 2 Christmas
- 10 25 3 Other

#### Teen (13 thru 19)

- 10 25 4 Birthday
- 10 25 5 Christmas
- 10 25 6 Other

#### Adult

- 10 25 7 Birthday
- 10 25 8 Christmas
- 10 25 9 Other

### Class 26 – Scrapbooking

Premiums: 1st - \$3.00, 2nd - \$2.00

#### Youth (up thru age 12)

- 10 26 1 Double Page - School
- 10 26 2 Double Page - Pets
- 10 26 3 Double Page - Other
- 10 26 4 Single Page, any subject
- 10 26 5 Mini Album



#### Teen (13 thru 18)

- 10 26 6 Double Page - Sports
- 10 26 7 Double Page - Clubs (4-H, Scouts, etc.)
- 10 26 8 Double Page - Other
- 10 26 9 Single Page, any subject
- 10 26 10 Mini Album

#### Adult

- 10 26 11 Double Page - Wedding
- 10 26 12 Double Page - Travel
- 10 26 13 Double Page - Other
- 10 26 14 Single Page, any subject
- 10 26 15 Mini Album

### Class 27 – Hobbies & Crafts

Premiums: 1st - \$3.00, 2nd - \$2.00

- 10 27 1 Beaded Item, large (over 6")
- 10 27 2 Beaded Item, small (6" or under)
- 10 27 3 Stained Glass Item
- 10 27 4 Handmade Jewelry, Necklace
- 10 27 5 Handmade Jewelry, Bracelet
- 10 27 6 Handmade Jewelry, Earrings
- 10 27 7 Handmade Jewelry, Any Other
- 10 27 8 Rubber Stamp Item
- 10 27 9 Machine Knitted Item
- 10 27 10 Stuffed Animal or Toy
- 10 27 11 Doll, Handmade & Dressed
- 10 27 12 Item made on Loom
- 10 27 13 Door Stop
- 10 27 14 Button Collection (8" x 10" display)
- 10 27 15 Collection (at least 6 items, ready to display)
- 10 27 16 Painted Wood Item
- 10 27 17 Wood Burning Item
- 10 27 18 Model, assembled by Adult (1)
- 10 27 19 Hand Woven Egg Basket
- 10 27 20 Hand Woven Market Basket
- 10 27 21 Hand Woven Grapevine Basket
- 10 27 22 Hand Woven Rag Basket
- 10 27 23 Hand Woven Open- Weave Basket
- 10 27 24 Hand Woven Basket, Any Other
- 10 27 25 Decorated Wreath
- 10 27 26 Gourd Item
- 10 27 27 Recycled Art Item (made from recycled materials)
- 10 27 28 Any Other Craft



**A special note of thanks to  
our Department Volun-  
teers**

**Laura Allion  
Susan Walker**

## **BOOK 10 - NEEDLEWORK & CRAFTS (cont')**

### **Class 28 – Youth & Grade Hobby Class**

Premiums: 1st - \$3.00, 2nd - \$2.00, 3rd \$1.00

Exhibitors will please include any container, mounting or other aids that might be useful in properly displaying their articles, collections, handcrafts, etc.

#### **Youth (ages 13 thru 18)**

- 10 28 1 Models (1)
- 10 28 2 Other hobby
- 10 28 3 Collection (6 items, ready for display)
- 10 28 4 Wood Item
- 10 28 5 Recycled Art Item (item made from recycled materials)

#### **Grade School (up thru age 12)**

- 10 28 6 Models (1)
- 10 28 7 Other hobby
- 10 28 8 Collection (6 items, ready for display)
- 10 28 9 Wood Item, small
- 10 28 10 Recycled Art Item (item made recycled materials)

### **Class 29 – Children's Needlework (12 & under)**

Premiums: 1st - \$3.00, 2nd - \$2.00, 3rd - \$1.00

- 10 29 1 Machine Sewing, Clothing
- 10 29 2 Crocheted Item
- 10 29 3 Knitted Item
- 10 29 4 Fleece Item
- 10 29 5 Pillow
- 10 29 6 Not Listed

### **Class 30 – Youth Needlework (13-18)**

Premiums: 1st - \$3.00, 2nd -\$2.00, 3rd - \$1.00

- 10 30 1 Machine Sewing, Clothing
- 10 30 2 Crocheted Item
- 10 30 3 Knitted Item
- 10 30 4 Fleece Item
- 10 30 5 Pillow
- 10 30 6 Not Listed



# Williams County Senior Fair Gillette & Still Exhibits - Book 11

Superintendent  
Danyel Wortkoetter

## BAKING CULINARY ARTS DIVISION

Committee Members  
Laura Allion & Susan Walker



### BOOK 11 - BAKING & CULINARY ARTS

#### Rules:

1. Entry's are free for ages 12 and under. Ages 13 and up must purchase an Exhibitors Pass for \$20. Ages 12 and under receive awards only, no premiums.
2. All entries must be submitted by the last Friday in August. NO ENTRIES WILL BE ACCEPTED AFTER THE ENTRY DEADLINE.
3. All items shown must be the work of the exhibitor.
4. Exhibitors must bring a written list of exhibits as they appear in the premium lists, and no item will be examined by the Secretary.
5. DO NOT ask the Secretary to make entries of any item not listed, as they will not be considered by the Judge.
6. ONE ENTRY PER CATEGORY UNLESS OTHERWISE SPECIFIED.
7. This department will be judged by appointed Judges.
8. The arrangement of all exhibits must be left to the Superintendent and the Assistants. They will assign locations and their decisions will be final on all questions that may arise.
9. Any disrespectful conduct on the part of the Exhibitors should be reported to the Judge or Superintendent who may reject any or all items not properly made.
10. Any item shown and considered unworthy of first premium may be awarded second premium or none. No item will receive more than one premium.
11. There is no guarantee of the safety of exhibits, but all precautions possible will be taken to protect exhibits.
12. Premium cards have no value in receiving payment of premiums, as they are paid from Judges' books, which are final in all cases.
13. Items will be released on Sunday following the fair from 10 am to 2 pm.
14. Anything left after 2pm Sunday can be picked up at the office during office hours.

15. The Exhibitors Pass is your weekly gate pass.

ALL CLASSES - No box or prepared mixes. Must submit recipe with item. One entry per category.

BAKED GOODS can be brought in on Thursday or Friday before the fair, but must be in place before 8:00 pm Friday. Judging of baked goods will be on Saturday @ 9:00 am. A piece will be kept for display of all pies, cakes and larger bread items. The remainder of these items only will be available for pickup by the exhibitor after judging on Saturday. Two Best of Show awards will be selected by the judges. One will be selected from the Adult entries and one from the Children's entries.

#### Class 31 – Candy (6 pieces on a small plate)

Premiums: 1st - \$4.00, 2nd - \$3.00, 3rd - \$2.00

- 11 31 1 Chocolate Fudge
- 11 31 2 Truffles
- 11 31 3 Nut Brittle
- 11 31 4 Caramels
- 11 31 5 Peanut Butter Fudge
- 11 31 6 Buckeyes



Explore  
Culinary Arts



## BOOK 11 - BAKING & CULINARY ARTS (cont')

### Class 32 – Cakes & Pies

Premiums: 1st - \$5.00, 2nd - \$4.00, 3rd - \$3.00

- 11 32 1 White Cake
- 11 32 2 Coffee Cake
- 11 32 3 Spice Cake
- 11 32 4 Angel Food Cake, no icing
- 11 32 5 Chocolate Cake
- 11 32 6 Pound Cake
- 11 32 7 Upside Down Cake
- 11 32 8 Cupcakes, any variety, frosted
- 11 32 9 Berry Pie, any variety
- 11 32 10 Apple Pie
- 11 32 11 Cherry Pie
- 11 32 12 Peach Pie
- 11 32 13 Pumpkin Pie
- 11 32 14 Custard Pie
- 11 32 15 Pecan Pie
- 11 32 16 Not Listed Cake
- 11 32 17 Not Listed Pie

### Class 33 – Cookies & Breads

Premiums: 1st - \$4.00, 2nd - \$3.00, 3rd - \$2.00

- 11 33 1 Oatmeal Cookies (6)
- 11 33 2 Molasses Cookies (6)
- 11 33 3 Cut-Out Sugar Cookies (6)
- 11 33 4 Refrigerator Cookies (6)
- 11 33 5 Chocolate Chip Cookies (6)
- 11 33 6 Snickerdoodles (6)
- 11 33 7 Not Listed Cookies (6)
- 11 33 8 Brownies (6)
- 11 33 9 Muffins, any variety (6)
- 11 33 10 Quick Bread Loaf, any variety
- 11 33 11 Brown Bread
- 11 33 12 White Bread
- 11 33 13 Cinnamon Rolls (6)
- 11 33 14 Pan Rolls (6)
- 11 33 15 Not Listed Yeast Bread
- 11 33 16 Cake Doughnuts (6)
- 11 33 17 Yeast Doughnuts (6)

### Class 34– Baking for Children (Ages 12 and under)

Awards Only—No Premiums

- 11 34 1 Peanut Butter Cookies (6)
- 11 34 2 Chocolate Chip Cookies (6)
- 11 34 3 Bar Cookies, any variety (6)
- 11 34 4 Muffins, any variety (6)
- 11 34 5 Decorated Cupcakes (6)

### Class 35 – Decorated Cakes – Amateur

All cakes will be judged on decoration only. Styrofoam or other cake forms will be acceptable

- 11 35 1 Wedding Cake \$8.00, \$5.00, \$3.00
- 11 35 2 Birthday Cake \$5.00, \$4.00, \$3.00
- 11 35 3 Special Occasion \$5.00, \$4.00, \$3.00
- 11 35 4 Decorated Cupcakes 4.00, \$3.00, \$2.00

### Class 36 – Bakers' Challenge

Premiums: 1st - \$25.00, 2nd - \$15.00, 3rd - \$10.00

#### Rules:

1. Open to all ages
2. Must use recipe as printed, no substitutions.
3. Recipe will change yearly
4. Winners will be determined by appointed judge.
5. All General Rules for Baked Goods apply
6. Nuts and a glazing are optional, place bread on a sturdy dish of your choice. Half of the bread will be kept for display, the remainder can be picked up after judging on Saturday.

#### Recipe: Plucket Bread

- 1 package regular yeast dissolved in 1/4 cup lukewarm water
- 1 cup scalded milk
- 1/3 cup granulated sugar
- 1/3 cup unsalted butter, melted
- 3 large eggs, well beaten
- 4 cups all-purpose flour
- 1/4 teaspoon salt

#### Filling:

- 1/2 cup unsalted butter, melted
- 1 cup granulated sugar
- 1/2 cup chopped nuts, optional
- 3 teaspoons cinnamon
- 1/4 teaspoon salt

Add sugar, melted butter, and salt to scalded milk. When lukewarm, add dissolved yeast, eggs, and flour. Beat thoroughly. Cover and let rise until double. Stir down and let rise again, until double. Pinch off pieces of dough to roll into 1 1/2 inch balls and dip in melted butter, then roll in mixture of sugar, nuts (if using), cinnamon, and salt. Pile balls loosely into an ungreased angel food cake pan. Let rise 30 minutes. Bake at 400 degrees for 10 minutes. Turn oven down to 350 degrees and bake for 30 minutes or until golden brown. Cool in pan for 5-10 minutes. Turn out of pan onto platter. Can be served warm or cooled.

### GOOD LUCK EVERYONE



# Williams County Senior Fair Gillette & Still Exhibits - Book 12

Division  
Superintendent  
Danyl Wortkoeter

## ANTIQUES & COLLECTIBLES DIVISION



### BOOK 12 - ANTIQUES & COLLECTIBLES

The exhibit will be staged in the Gillette Cultural Arts Center. The show will be open to all counties. Entries are free for ages 12 and under. Ages 13 and up must purchase an Exhibitors Pass for \$20. Ages 12 and under will receive awards only, no premiums.

1. Exhibitors may submit 3 items per CLASS. Three years must pass before an item may be exhibited again.
2. Exhibitor must bring in or mail an entry form with a list of items to the fair office by the last Friday in August.
3. Exhibitor is responsible for placing items in proper class and category.
4. Exhibits will be accepted at the Gillette Building on Thursday, September 9th from 10:00 am until 5:00 pm.
5. The exhibitor or their agents must present all exhibits in person. Be sure all entry tags are firmly attached to items
6. The Exhibitors Pass is a weekly gate pass.
7. All items should be clean and in a good state of preservation. Condition and rarity are of prime importance and will be considered in the judging. The judge may place an entry less than first place if the entries in the class are not worthy of a higher place.
8. If the item is unusual, a small typed or neatly printed information card would be appreciated.
9. The Williams County Agricultural Society is not responsible for damage, breakage, or theft.
10. Judging will be Thursday, Sept. 9, 2019.
11. Judge's decision is final.
12. Premiums will be paid from judge's records only and not from ribbons which may be attached to the exhibits. Premiums will be mailed the first business day after the annual fair. No names will be printed in the newspapers.

**Premiums: 1st -\$4.00 2nd -\$3.00 3rd-\$2.00**  
**Best Of Show: Plaque, Rosette Ribbon**  
**People's Choice Award**

#### Class 1: Dolls

1. Barbies
2. Steiff Bears
3. Beanie Baby's
4. Stuffed Animals
5. China Doll
6. Other

#### Class 2: Bells

1. School Bells
2. Sleigh Bells
3. Glass Bells
4. Cow Bells
5. Brass Bells
6. Any Other

#### Class 3: China

1. Tea Set
2. Plates
3. Nippon
4. Calendar Plate
5. Figurines
6. Other

#### Class 4: Glass

1. Milk Glass
2. Candle Stick (Pair)
3. Shot Glass
4. Flower Vase
5. Early American Press Cut
6. Any Other

#### Class 5: Pottery

1. Hull
2. McCoy
3. Weller
4. Jug
5. Crock
6. Other

#### Class 6: Service Clubs

1. Rotary Club
2. Kiwanis Club
3. Lion's Club
4. United Way
5. Other

#### Class 7: Music

1. Musical Instrument
2. Record Album
3. Transistor Radio
4. Sheet Music
5. Any Others

#### Class 8: Halloween

1. Mask
  2. Pumpkin
  3. Book
  4. Decoration
  5. Any Other
- #### Class 9: Money
1. Confederate
  2. Coin Pre 1900
  3. Foreign Money
  4. Tokens or Good For's
  5. Wooden Nickels
  6. Any Other

#### Class 10: Montpelier, OH

1. Post Card
2. Fair Item
3. Manufacturing
4. Merchant
5. Any Other

#### Class 11: Sports

1. Football
2. Baseball
3. Hunting
4. Fishing
5. Golf

#### Class 12: Toys

1. Ohio Art
2. Tractor
3. Pedal Vehicle
4. Pull Toy
5. Jack in a Box
6. Any Other

#### Class 13: Textiles

1. Quilts
2. Linen & Dollies
3. Women's Clothes
4. Men's Clothes
5. Hats
6. Any Other

#### Class 14: Collectible Pre 1990

1. Fast Food
2. Auto Racing
3. Political
4. Soft Drink
5. Beer Cans
6. Any Others

#### Class 15: Farm Tools

1. Bale Hook
2. Pulley
3. Implement Tool
4. Wood Working
5. Any Other



# *Williams County Senior Fair Gillette & Still Exhibits - Book 15*

Division  
Superintendent  
Danyel Wortkoetter

## **PHOTOGRAPHY DIVISION**

**Premiums:**  
**1st -\$4.50 2nd -\$3.50 3rd-\$2.50**  
**Ribbons for 1st, 2nd and 3rd place**  
**Best Of Show: Rosette Ribbon**



### **BOOK 15 - PHOTOTGRAPHY**

#### **Rules:**

1. Entry forms must be submitted by the last Friday in August, to receive your entry tags. Entry's are free for ages 12 and under. Ages 13 and up must purchase an Exhibitors Pass for \$20. Ages 12 and under receive awards only, no premiums.
2. Exhibits must be brought into the Gillette Building on the fairgrounds on Thursday, Sept. 9, from 12 p.m. – 8:00 p.m.
3. Judging will be conducted on Friday, Sept. 10. All results will be posted by Saturday, Sept. 11.
4. Exhibits can be picked up between 9 a.m. and 12 p.m. Sunday, September 19th. Any exhibit removed before this time will forfeit premium.
5. An exhibitor may enter two photos per sub class, but photos can only be exhibited once and many not be exhibited again at the fair.
6. No photo will be exhibited with photographer's signature or logo on the face of the photo.
7. Exhibit is open to amateur photographers only. An individual who receives money for their work or who makes a living with photography is NOT eligible to exhibit, nor is their work eligible for exhibit by others.
8. The Committee reserves the right to determine whether an article is worthy of exhibition. (No Nudes)
9. Single photos must be 8x10 and mounted neatly and securely on mounting board not to exceed 12x14. A border of 2 inches per side is recommended for all photographs. No photographs will be displayed in frames of any kind. Photos will be secured to walls with use of stapes on each corner. Staples will not penetrate the mounting board. Please don't put any kind of hanger on your photos. The Fairboard Department Superintendent will do this.
10. Name and address must be placed on back of each entry.
11. All different types of photos, be it colored, black and white, or digital prints will be entered not by the type but by what the photo is of.
12. Age divisions are: Youth 8-12 Years of Age; Junior 13-18 Years of age; and Senior 19 Years of age and older.
13. Premiums will be given from the awards marked in the judge's records and not from stickers that may be attached to the exhibit. Premiums will be mailed the first business day after the annual fair.
14. Judges decision is final Premiums will be paid per class.
15. Bring exhibitor tags with the photos at time of entry and Superintendent will attach tag.
16. Williams County Agricultural Society is not responsible for loss or damage of entries.
17. Premiums can be picked up the first business day following the annual fair.
18. The Williams County Agriculture Society is not responsible for photo's entered as an exhibit without consent of the individual pictured as that may apply. Exhibitors bear the sole responsibility for the pictures they enter.

**BOOK 15 - PHOTOGRAPHY (cont')**

*Enter by using Book-Class-Lot-Description*

**Youth Class 1: Color**

- 15 1 1 Animals(s)
- 15 1 2 Scenery
- 15 1 3 People
- 15 1 4 Special Effects

**Youth Class 2: Black & White**

- 15 2 1 Animal(s)
- 15 2 2 Scenery
- 15 2 3 People
- 15 2 4 Special Effects

**Youth Class 3: Digital**

- 15 3 1 Animal(s)
- 15 3 2 Scenery
- 15 3 3 Sport & Recreation
- 15 3 4 Special Effects

**Junior Class 4: Color**

- 15 4 1 Animal(s)
- 15 4 2 Scenery
- 15 4 3 Sports & Recreation
- 15 4 4 Special Effect

**Junior Class 5: Black & White**

- 15 5 1 Animal(s)
- 15 5 2 Scenery
- 15 4 3 Sports & Recreation
- 15 4 4 Special Effect

**Junior Class 6: Digital**

- 15 6 1 Animal(s)
- 15 6 2 Scenery
- 15 6 3 Sports & Recreation
- 15 6 4 Special Effect

**Senior Class 7: Color**

- 15 7 1 Animals
- 15 7 2 Scenery
- 15 7 3 People
- 15 7 4 Sports & Recreation

**Senior Class 8: Black and White**

- 15 8 1 Animals
- 15 8 2 Scenery
- 15 8 3 People
- 15 8 4 Sports & Recreation

**Senior Class 9: Digital**

- 15 9 1 Animals
- 15 9 2 Scenery
- 15 9 3 People
- 15 9 4 Sports & Recreation

**Open Photography Class 10: Fair History**

*This class is open display of any pictures related to history of the Williams Co. Fair. \*special class\**

- 15 10 1 Fair History - Youth - any picture
- 15 10 2 Fair History - Junior - any picture
- 15 10 3 Fair History - Senior - any picture

# Williams County Senior Fair Gillette & Still Exhibits - Book 16

Division  
 Superintendent  
 Danyel Wortkoetter  
 419-633-1992

## ARTS DIVISION

**Premiums:**  
**1st -\$3.00; 2nd-\$2.00; 3rd-\$1.00,**  
**Ribbon for 1st, 2nd and 3rd place**  
**Best Of Show \$5.00**



### BOOK 16 - ARTS

#### Rules:

1. Exhibits must be brought into the Gillette Building on the Fairgrounds on Thursday Sept.9th from 12 p.m. - 8:00 p.m. Contact the Superintendent if you cannot make this date.
2. Entry forms need to be submitted to the fair office by the last Friday in August to receive your entry tags. Entry's are free for ages 12 and under. Ages 13 and up must purchase an Exhibitors Pass for \$20. Ages 12 and under receive awards only, no premiums.
3. Judging to be Friday, Sept. 10th. All results will be posted by Saturday the 11th.
4. Removal of exhibits will be 9 a.m. - 12 p.m. Sept. 19th. Any exhibits removed before this time will be forfeit premiums.
5. All artwork must be matted and in frames equipped with wire for hanging.
6. An exhibitor may enter no more than two entries per class, but will only receive one premium per class.
7. The Committee reserves the right to determine whether an article is worthy of exhibition (no nudes).
8. Name, address and date of work must be on back of entry.
9. Judges decision is final.
10. Best of Show will receive a rosette ribbon.
11. The Exhibitors Pass is your weekly gate pass.
12. Williams County Agricultural Society is not responsible for loss or damage of entries.
13. Exhibits can be picked up Sunday, Sept. 19th between 9am -12pm. Premiums will be mailed the first business day after the annual fair.

Divisions for all classes as follows: Youth (up to 12 yrs.), Junior (13-19 yrs.) Seniors (20 and up yrs.)

#### Senior Division

##### Class 3: Watercolor Paintings

- 16 3 1 Flower or Fruit
- 16 3 2 Animals
- 16 3 3 Still Life

##### Class 4: Oil Paintings

- 16 4 1 Flower(s) or Fruit
- 16 4 2 Animal
- 16 4 3 Pastel Flower(s) or Fruit
- 16 4 4 Scenery

##### Class 5: Acrylic

- 16 5 1 Flower(s) or Fruit
- 16 5 2 Animal(s)
- 16 5 3 Still Life
- 16 5 4 Scenery

##### Class 6: Porcelain - Commercial Blanks

- 16 6 1 Bells and Boxes
- 16 6 2 Tea Sets
- 16 6 3 Vases
- 16 6 4 Plates
- 16 6 5 Banks
- 16 6 6 Specimen not listed

#### Professional Division

##### Class 7: Watercolor Paintings

- 16 7 1 Flower or Fruit
- 16 7 2 Animals
- 16 7 3 Still Life

##### Class 8: Oil Paintings

- 16 8 1 Flower(s) or Fruit
- 16 8 2 Animal
- 16 8 3 Pastel Flower(s) or Fruit
- 16 8 4 Scenery

##### Class 9: Acrylic

- 16 9 1 Flower(s) or Fruit
- 16 9 2 Animal(s)
- 16 9 3 Still Life
- 16 9 4 Scenery

##### Class 10: Porcelain - Commercial Blanks

- 16 6 1 Bells and Boxes
- 16 6 2 Tea Sets
- 16 6 3 Vases
- 16 6 4 Plates
- 16 6 5 Banks
- 16 6 6 Specimen not listed

##### Class 11: Any Media

- 16 11 1 Flowers
- 16 11 2 Animals(s)
- 16 11 3 Scenery

##### Class 12: Painted Object

- Object not to exceed weight of 10 lbs. and size limited to a max of 24"x24"x24".
- 16 12 1 Acrylic painted
- 16 12 2 Oil painted

#### Youth Division

##### Class 1: General Art

- 16 1 1 Chalk
- 16 1 2 Pencil Work
- 16 1 3 Pen & Ink Sketch
- 16 1 4 Crayon
- 16 1 5 Paint by Number

#### Junior Division

##### Class 2: General Art

- 16 2 1 Pencil work
- 16 2 2 Pen & Ink Sketch
- 16 2 3 Water Color Painting
- 16 2 4 Oil Painting
- 16 2 5 Acrylic Painting





# Williams County Junior Fair - FFA - Farm Shop & Farm Products

Shared  
Superintendent  
Pam Goll  
419-553-0778

**Farm Products  
Farm Shop  
Judging  
Sat - Sept. 11th  
Gillette Building**

Shared  
Superintendent  
Scott Carroll  
419-212-0610

**All FFA Division Premiums:  
A-\$3.50, B-\$3.00, C-\$2.50**



## FFA **\*\*Still Projects\*\***

### **FARM PRODUCTS DIVISION**

All non-crop projects must be in place in the Gillette Building by Friday, September 11th, 2020 at 8:00 p.m. Crop projects must be in place by Saturday, September 11th at 10:00 a.m. Projects will be released on Sunday, September 19th from 10 a.m. to 1 p.m.

#### **Judging:**

Saturday, September 11th at 4:00 p.m.

#### **Rules:**

1. All exhibits must be grown in the current year and part of the FFA members' project.
2. Entries are limited to one in each class per exhibitor. All entries must be submitted by June 1st of current year to OSU Extension Office.
3. No more than four premiums paid per division.
4. Variety of seed must be given when entry is made.
5. There will be a class champion if three (3) or more entries are exhibited.
6. Exhibitors must furnish their own glass jar for the field crop class. Field crops include wheat, oats, barley, rye, spelts, alfalfa, mammoth clover, red clover, sweet clover and timothy.
7. Garden vegetables include sweet corn (6 ears), potatoes, tomatoes, peppers, etc. Vegetables other than sweet corn should be exhibited on a paper plate in a grouping of 4-6.

#### **Department/Section/Class**

JR FFA 900 Field Corn (6 ears)  
JR FFA 901 Soybeans (3 stalks w/ roots)  
JR FFA 902 Hay (4-6 inch slice)  
JR FFA 903 Field Crop (1 pint)  
JR FFA 904 Garden Vegetables

## FFA

### **FARM SHOP DIVISION**

All non-crop projects must be in place in the Gillette Building by Thursday, September 9th at 8:00 p.m. Crop projects must be in place by Saturday, September 11th at 10:00 a.m. Projects will be released on Sunday, September 19th from 10 a.m. to 1 p.m.

#### **Judging:**

Saturday, September 11th at 4:00 p.m.

#### **Rules:**

1. Entries are limited to 2 different entries per class. All entries must be submitted by June 1st of current year to the OSU Extension Office.
2. Exhibits must be part of exhibitor's Ag Ed instructional program from previous year and must be made in the school lab.
3. A poster with at least two photographs of the project can be exhibited in place of actual projects that are too large or unable to be exhibited.
4. There will be a class champion if three (3) or more entries are exhibited.

#### **Department/Section/Class**

JR FFA 920 Small Wood Projects  
JR FFA 921 Small Metal Projects  
JR FFA 922 Medium & Large Wood Projects  
JR FFA 923 Medium & Large Metal Projects  
JR FFA 924 Non-Ag Indoor Projects  
JR FFA 925 Non-Ag Outdoor Projects  
JR FFA 926 Poster- Current Ag Studies/SAE  
JR FFA 927 Ag Science Research (tri-fold)



## 2021 SENIOR FAIR/STILL ENTRY FORM

619 East Main Street ♦ Montpelier, Ohio 43543  
Phone (419) 485-3755 ♦ Fax (419) 485-1324  
Email - office@wcofair.com ♦ website - www.wcofair.com

**Exhibitor Name:** \_\_\_\_\_ **Register's #** \_\_\_\_\_

**Address:** \_\_\_\_\_

**City:** \_\_\_\_\_ **State:** \_\_\_\_\_ **Zip:** \_\_\_\_\_

**Email:** \_\_\_\_\_ **Phone:** \_\_\_\_\_

The Williams County Ag. Society, its Directors, agents and employees assume no responsibility for any exhibits entered at the Fair. An Exhibitor acknowledges articles placed at the fair are maintained by them at their sole risk. By signing the "Entry Form", the Exhibitor agrees to hold harmless from all claims the Society, Directors, agents or employees. The Directors and Superintendents assume no responsibility for errors made in exhibit entry. ALL EXHIBITORS ages 13 and up must purchase an Exhibitors Pass for \$20.00 to make entry into the Senior Fair/Still exhibits. Ages 12 and under are free with awards only, no premiums.

Complete the form and submit to the office during regular hours or mail to the address above. Entries are due no later than August 28, 2021. Thank you for your entry and support!

BOOK	CLASS	LOT	ENTRY DESCRIPTION
10	3	23	(SAMPLE ENTRY) Bed Spread - Crochet

<b>Exhibitor Signature</b> _____	<b>Exhibitor Pass</b>	<b>\$20.00</b>



**Proud partner for more than 30 years!**

**POOR JACK**  
**AMUSEMENTS**

THIS SPACE FOR RIDE PRICES / WRISTBAND PRICES  
AND DAILY SCHEDULES FOR POOR JACK