

Client **D&H Peps**

 Received **03/22/2026**

 Analyzed **03/22/2026**

This Certificate of Analysis certifies that the sample listed herein was tested by Kovera Labs using validated analytical methods and was found to meet the stated specifications at the time of analysis.

**SAMPLE INFORMATION**

<b>Product</b>	<b>Glow</b>	<b>Form</b>	<b>Lyophilized Powder</b>
<b>Batch</b>	<b>GW70326A</b>	<b>Labeled Qty</b>	<b>70mg</b>
<b>Cap Color</b>	<b>Green</b>	<b>Crimp Color</b>	<b>Silver</b>

**TEST RESULTS**

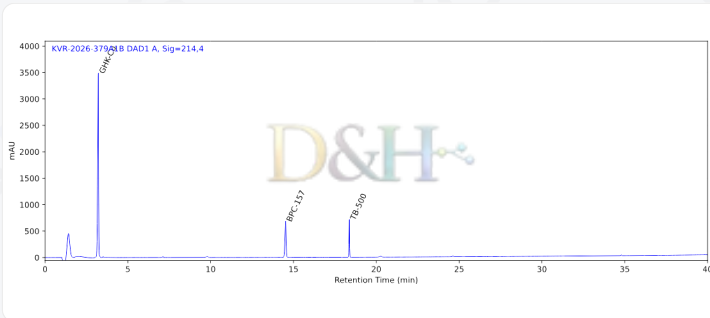
	<b>REFERENCE STANDARD</b>	<b>RESULT</b>	
<b>Blend Avg Purity</b>	(>98%)	<b>99.734%</b>	✔
<b>Blend Avg Net Content</b>	(70mg ± 10%)	<b>74.18 mg</b>	✔
<b>Blend Identification (LC-MS)</b>	(Glow)	<b>Glow</b>	✔

**BLEND COMPONENT ANALYSIS**

<b>Component</b>	<b>Labeled</b>	<b>Measured</b>
BPC-157	10 mg	10.43 mg
TB-500	10 mg	11.19 mg
GHK-Cu	50 mg	52.56 mg

**CHROMATOGRAM**

Method: RP-HPLC | Column: C18 | Detection: DAD @ 214 nm


 David Cohen  
 Lab Director


koveralabs.com/verify

Report#: KVR-2026-379A1B

Access Code: 33WTEIM