

## Use Photoshop to Create a Posterization

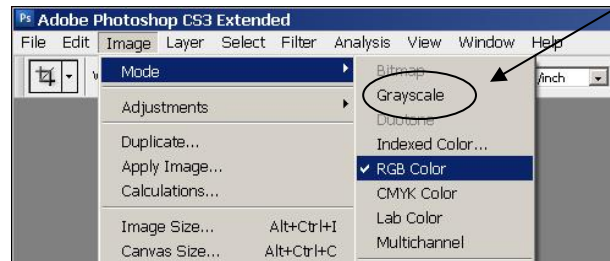
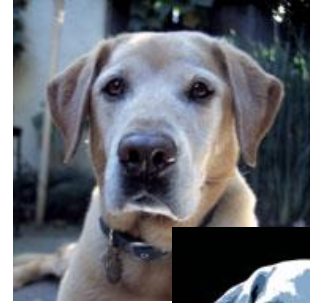
This Photoshop technique demonstrates how to reduce the color palette of an image to create a posterized effect

1. Open One Drive to find the image you want. **Download your chosen image.**

2. Open Photoshop  
Search CS6 > Click on Adobe Photoshop CS6

3. Open the image you want to posterize in Photoshop.  
File >> Open >> select from Downloads >>select file

4. Next, we will convert the image to Grayscale.  
Image >> **Mode** >> Grayscale >> Click OK to discard all color information



5. Posterize the image.

**Layer >> New Adjustment Layer >> Posterize**

In the New Layer dialog box, click OK and select the number of Levels (colors) desired in the image.

Use the slider bar to see how different numbers affect the image.

Most likely, the best result will have somewhere between **2 to 8 levels**.

6. Add color to the image.

In order to add color, we must first change the **MODE** back to RGB Color (see above.)

Image >> **Mode** >> RGB Color >> Click OK to Flatten the image

7. Choose a foreground and background color.

Double click to select a color you like in the color **foreground box** at the bottom of the tool box.

Then double click to choose a **background color**. Try selecting one light color and one dark.

8. Apply the colors using a Gradient Map.

Select Layer >> New Adjustment Layer >> **Gradient Map**

In the New Layer dialog box, click OK.

9. Experiment with colors.

If you don't like your color, undo using EDIT >> UNDO or CTRL Z

Try several colors until you find the one you like best.

10. When you are finished posterizing, you will wind up with an image that has MANY LAYERS! Layers take up memory and space. **WE DON'T WANT LAYERS IN THE FINISHED IMAGE!!!**

When you are **COMPLETELY FINISHED** adding color, click on Layer >> **Flatten Image**. This will merge all the layers into one.

11. Finally, **SAVE** your image!

File >> Save As >> Click Save

When you are asked if you want to replace, click YES.

Make sure to **UPLOAD** the final image in your One Drive.

