



PMC Approach

VecTrance / DNI Group provides oil operating companies, with PMC packages for construction project of oil/gas, mining, petrochemical , power production facilities

MISSION



Our mission:

- ▶ Assist project owners, contractors in the analysis, set up and achievement of their projects.

- ▶ Answer the engineering and project management requirement and specialized competencies of our clients, on site, in order to :
 - ▶ optimize their PMC needs,
 - ▶ supervise engineering or construction contracts,
 - ▶ provide technology transfer

VISION

Our vision:

- ➔ Create a close FOUNDERShip with our clients in order to help them achieve Oil & Gas and energy projects on time, under budget and with quality standards exceeding expectancies

- ➔ **VecTrance / DNI Group strategy** is to expand its operations on a global basis through the development and diversification into new markets and business streams, with a continuous focus to strengthen its core competencies.



OBJECTIVES AND CAPABILITIES

Objectives:

- Provides ultimately engineering deliverables for procurement and construction of process installations, based on advanced project engineering management capabilities, which allow control of project quality, cost and delay.



Capabilities and disciplines:

- Our PMC services are orientated in the integration and coordination of various know how covering the following engineering specialties and know how :
 - Process (simulations, spec, PID preparation, OM preparation), Mechanical: rotating machines, piping, vessels, pipeline, Electrical, Process control/ Instrumentation (field bus standard, old standards ...), Civil engineering
 - Construction supervision, Inspection, QA/QC, HSE engineering/management strong experience
 - Project control (scheduling, cost/estimating, progress monitoring, contract management/administration....), high backlog of experience

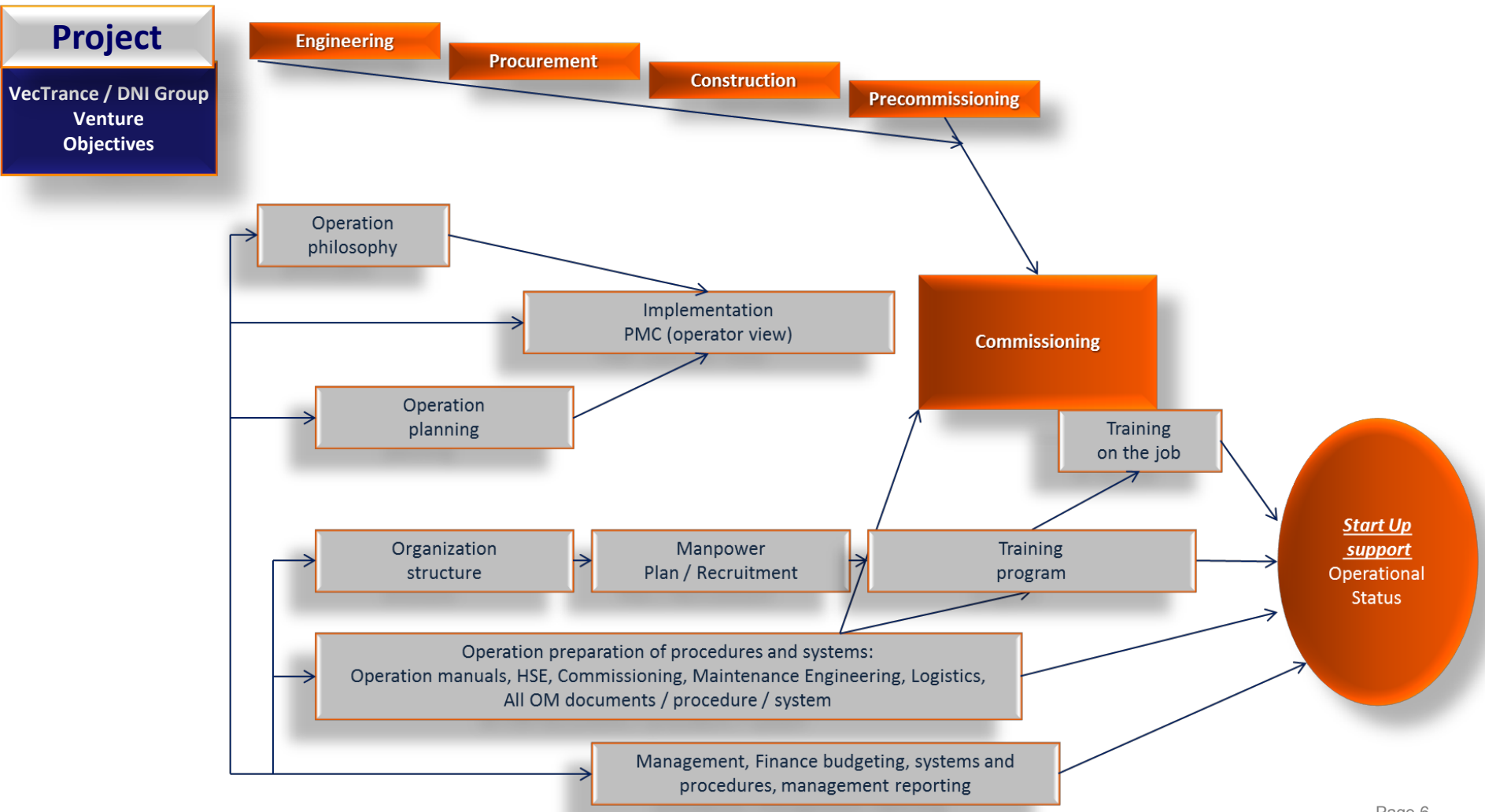
OUR COMPETITIVE ADVANTGE

- Lean Management Team gathering one of the best track record in the Oil & Gas and Power Generation industry with minimum overhead
- Project Teams tailored to client's requirements and composed of highly skilled professionals
- Flexible structure allowing complex contract requirements

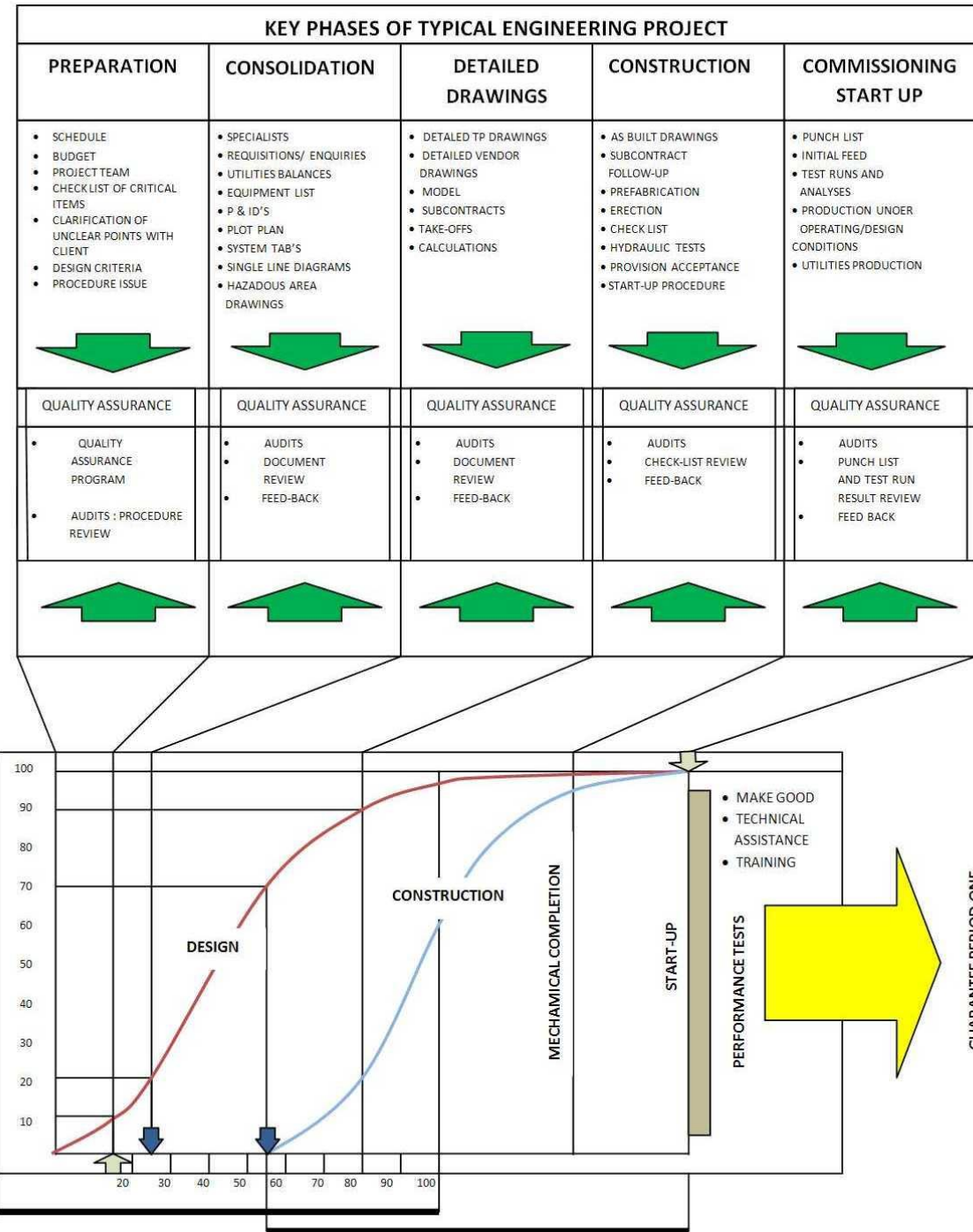
➡ **Capabilities and network of relations of a multinational firm allied to the reactivity and adaptability of a start-up company**



OPERATION PREPARATION PLAN



QC ENGINEERING



PMC : Detailed tasks

■ Project management including

- Project control (scheduling, cost control, progress control, estimation)
- Project strategy development
- Documentation management
- HSE & QA/QC



■ **Engineering coordination & supervision**

- Civil
- Steel structure
- Vessels
- Piping
- Electrical
- Instrumentation
- DCS
- Mechanical
- Thermal
- Insulation & painting



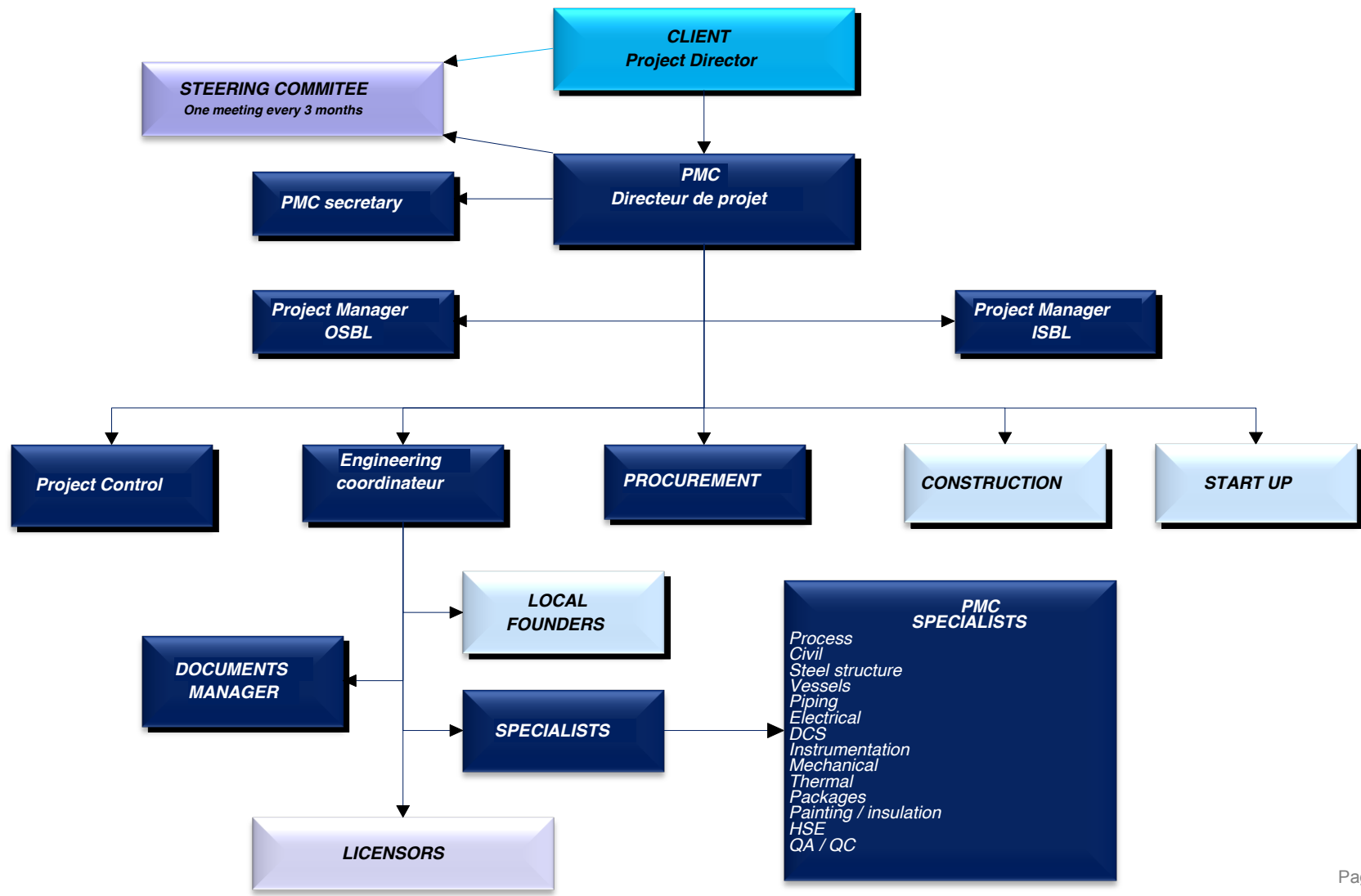
- **Procurement coordination**
 - Equipments & materials Purchasing
 - Work shop inspection
 - Expediting
 - Contracting
 - Transport



- **Construction management**
 - Construction management
 - Construction supervision
 - Construction quality control
 - Construction HSE
 - Pre-commissioning supervision



ORGANIZATION



EXPERIENCE AND REFERENCES OF VecTrance / DNI Group FOUNDERS

- ➔ Oil/Gas processing, treatment plants, power gen, solar,...
- ➔ Gas processing units, refinery units (IFP Patents), Gas power-generation plants
- ➔ Offshore platform topsides, FPSO, pipelines, offsite utilities.



* Partners' references

VecTrance / DNI Group experience covers news unit engineering designs, as well as revamping or installations modifications.

Actually VecTrance / DNI Group is used to work on a lump sum basis, on call off contract, or bill of quantities, as required its by clients.

WORLDWIDE EXPERIENCE 1999 – 2015: OILGAS, POWERGEN, SOLAR

- ➔ **F.E.E.D. (Process and Disciplines)** : Burlington, Anadarko, Total EP Yemen, Bouygues Offshore, Foster Wheeler, Kvaerner, Technip, Shell, RNZ Integrated, PC Myanmar, TOTAL
- ➔ **FEASIBILITY (Process Defin, Architecture Design and Optimization)**: Bapco, Agoco, Eni, Agip Kco, MPG Elf, Total Austral, Kvaerner, Technip, GDF, BEERD, Eco...
- ➔ **DESIGN ENGINEER MANAGEMENT/PROJECT CONTROL**: Saipem, Korea gasco, Geostock, Repsol, Technip, Total Sincor, Total Nigeria/Angola/Venez, NEPA, Modec, Petrobras, VME Process inc, SBM, Mc Dermott, Sun oil, Santa Fe Ener Res of China, Technip, OGER, Polysius, Yemen Ing, Atlantic Ing
- ➔ **HSE ENGINEERING/PROJ CONTRACT MANAGT**: Apache, Nimir, Total, Exxon, Perenco, Pedco, Hyundai, Technip, Cnooc
- ➔ **PMC procuremt/Construct management: oilgas, power gen, Chem/infrastructures**
 - GOSP/Oil : Kvaerner, Burlington, Technip, Total, Shell, Sincor, Repsol
 - Gas , Petrochem: Total, Kaverner, Elf, FW, Kvaerner, FW, ENI, Atlantic LNG, Total,
 - GDF, Cofatec, PC Myanmar, FW, Lavalin, Arkema,
 - Power plant/cement: Nepa, EDF, Lafarge, Tractebel GDF, GE, Marubeni, Alstom...
 - Civil infrastr: Oger, Thyssen, ...

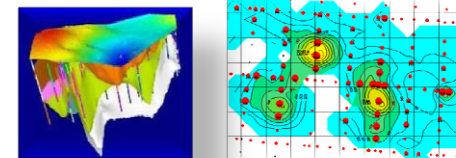
SOME PMC FOUNDERS REFERENCES

Client : DNI METALS, KELT,....

date 2004, 2009

PMC function basic geology studies, sow, planning contract management, QA/QC

details Pmc of all geophysics and geochemistry studies: contract management, planning, supervision of contractors

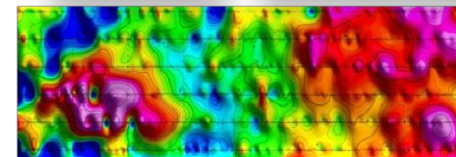


Client : TOTAL, NIMIR, PERTAMINA, NIOC

date 2003, 2008

PMC function studies basic petroleum enging ,site geolog, planning contract management, feed

details Pmc of all reservoir studies/well site geolog: contract management, planning, supervision of logging contractors



SOME PMC FOUNDERS REFERENCES

Client: **SINCOR (Total Statoil PDV), Venezuela – 5.3 B \$, 1998,2008**

Client **LAFARGEHOLCIM, 2013,15, 9 PROJECTS ON 8 COUNTRIES, 45refer with oil co Shell, BP Angola,...**

PMC functions: **construct Project control, HSE, OM preparation**

Detail on Sincor: Overall FEED (Frontal Engineering Design) supervision (Foster Wheeler US),
Engineering contractors supervision (FW, Technip, Uhde, ...) in Caracas, Puerto La Cruz and San José (Planning contract management).
Construction management upstream facilities (heavy oil process).
Supervision maintenance, operation, preparation programs and HSE supervision.
Upgraded PMC engineering, procurement, construction and commissioning.

Size: 1500 men months



SOME PMC FOUNDERS REFERENCES

Client: Burlington, London, Total Argentina

Date: 2001-2002

PMC function: Engineering, HSE, Project control

Detail: Conceptual and feasibility studies, basic engineering of an Algerian project.
Supervision of contractors in charge of the project.

Size: 144 men months.



SOME PMC FOUNDERS REFERENCES

- Client:** EDF (Electricité De France),...
- Date:** 1996 to 2001
- PMC functions:** project control
- Detail:** PMC of major shutdown of all France nuclear plants.
Preparation of engineering, shutdown implementation, cost planning, vendor and contractor contract management.
- Size:** 370 men months.



SOME PMC FOUNDERS REFERENCES

- Client:** Cofathec (GDFSuez)
- Date:** 1997 to 2000
- PMC functions:** Engineering, HSE, Project Control, QA/QC
- Detail:** PMC of 3 power generators and cogeneration plants in France.
Engineering supervision and contractor supervision up to Pre-commissioning.
- Size:** 45 men months.



SOME PMC FOUNDERS REFERENCES

- Client:** Kaduna Refining Company, Nepa, Afam power plant Nigeria
- Date:** 1991-94
- PMC function:** Engineering and project control
- Detail:** Feasibility and FEED (Frontal Engineering Design) of new projects (reforming, hydro-treatments, utilities...).
Supervision of contractors (Lummus...).
- Size:** 70 men months



SOME PMC FOUNDERS REFERENCES

Client: Amoco, Houston

Date: 1992

PMC function: Engineering, project control, QA/QC

Detail: Supervision of contractors in charge of conceptual and feasibility studies of a Gulf production and semi-sub platform.

Size: 65 men months.



SOME PMC FOUNDERS REFERENCES

Client: Alfol plant, Mashino Import

Date : 1977-78

PMC function: Engineering, Project Control, QA/QC

Detail: FEED (Frontal Engineering Design), engineering, procurement start.
Supervision of contractors (Alfol process from Conoco).
Start up supervision.

Client: Conoco, El Paso,

Date: 1975-76

PMC function: Engineering, Project Control, QA/QC

Detail: Construction Phase of San Juan Basin BCG gas plant (NGL).



SOME PMC FOUNDERS REFERENCES

Client: RENAULT
Date: 1991-2007
PMC function: Engineering and Project Control
Detail: PMC of car launching projects, engine development projects and automotive plants construction.
Size: 1030 men months.



Client: PSA (PEUGEOT – CITROËN)
Date: 1998-2007
PMC function: Engineering and Project Control
Detail: PMC of 4 car launching projects, engine development projects and automotive plants construction.
Size: 1440 men months.

SOME PMC FOUNDERS REFERENCES

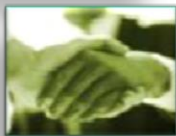
- Client:** AGIP, London
- Date:** 2003-2004
- PMC function:** Engineering, HSE, and project control
- Detail:** PMC of conceptual studies and feasibility phase of KCO mega project (Kazakstan) of subsea architecture in Artic conditions.
Analysed 50 options and evaluated them on economics, risk, operation maintenance and HSE criteria.
Optimised architecture and performed cost control and planning management.
Supervision of Parsons, FMC and other vendors.
- Size:** 72 men months.



SOME PMC FOUNDERS REFERENCES

Other PMC DNI K founders References in oil/gas drilling/engin/management 1997/2011

Arco , Atlantic LNG
 Caspian gas corp, Agoco
 Amoco,Chevron,
 Orientpetroleum,
 Pedco, South Pars co
 Wascana Total
 Pluspetrol,
 Monument,
 BHP, Nimir,
 Repsol,
 SakhalineEnergy,
 Shell (Malais, Nigeria)
 Saudi Aramco,Sec



SOME PMC REFERENCES

- Client:** LAFARGE-HOLCIM
Canada, Iraq, Russia, Egypt, Nigeria, Tanzania....
- Date:** 2013 – 2015
- PMC functions:** HSE, Construction supervision
- Detail:** Site supervision and HSE, WAH... supervision and coordination
- Size:** 25 men months per project



SOME PMC REFERENCES

- Client:** TECHNIP
New Caledonia, Niger, Korea, Finland...
- Date:** 2013 – 2015
- PMC function:** Site supervision, QA/QC, HSE, Material logistics management
- Detail:** Yard in Korea, mining project (Koniambo), Finland nuclear project
- Size:** 25 men months per project



SOME PMC REFERENCES

Client: TRACTEBEL (Engie)
China, Morocco

Date: 2015

PMC functions: HSE, QA/QC, project control

Detail: Coal and gas power stations

Size: 20 men months per project



SOME PMC REFERENCES

- Client:** OGER INTERNATIONAL
Saudi Arabia, Morocco
- Date:** 2015
- PMC functions:** Construction project management (hotels, residences, stadiums, hospitals...)
- Detail:** Architecture design
- Size:** 15 men months per project

