



Breaking Boundaries: Confronting Sit-to-Stand Challenges with Innovation

IT ALL BEGAN WITH A PIVOTAL MOMENT IN 2017 WHEN CURT CHRISTIAN, OUR FOUNDER, RECEIVED A LIFE-ALTERING CALL ABOUT HIS FATHER'S NEAR-FATAL ACCIDENT. WITNESSING HIS FATHER'S STRUGGLE WITH SIT-TO-STAND ISSUES, EVEN AFTER EXTENSIVE THERAPY, IGNITED CURT'S DETERMINATION TO MAKE A DIFFERENCE. SHOCKED BY THE LACK OF SIMPLE SIT-TO-STAND SOLUTIONS, CURT ASSEMBLED A TEAM OF EXPERTS TO DEVELOP GROUNDBREAKING FURNITURE DESIGNS, CULMINATING IN OUR PATENTED S3 UPLIFTER CHAIRS™

GUIDED BY CURT'S UNIQUE VISION, F3 SENIOR IS REVOLUTIONIZING SENIOR LIVING ENVIRONMENTS. THESE GROUNDBREAKING DESIGNS PRIORITIZE INDEPENDENCE, ENABLING THOSE WITH MOBILITY CHALLENGES TO NAVIGATE SPACES WITH EASE AND COMFORT, ULTIMATELY LEADING MORE FULFILLING LIVES. EACH PIECE OF FURNITURE REFLECTS THE METICULOUS BALANCE BETWEEN AESTHETICS AND PRACTICALITY, INCORPORATING FEATURES THAT ENHANCE USABILITY AND SAFETY.

We create spaces that your tenants
will love to call home.

SPACE TO DINE
INSTEAD OF JUST EAT



ENVIRONMENTAL RESPECT

DOING OUR PART

Our products are made with sustainably manufactured solid bamboo and bamboo veneers. These rapid renewable materials perform like hardwoods yet can grow up to 3 feet a day in ideal conditions.

Bamboo consumes 5-10 times more carbon than wood, making it a powerful carbon sink and environmentally-friendly manufacturing option.

We construct our furniture using low VOC (Volatile Organic Compound) glues, improving air quality and creating safer and healthier indoor environments.

Our use of VOCs is industry-leading and outperforms CARB requirements for low formaldehyde emissions.



We use **bamboo** substrates for all of our timber products.



Bamboo can grow up to **3 feet per day** and fully mature within 3 years (compared to wood which takes 10+ years).



Bamboo thrives in poor soil conditions and **requires minimal inputs such as fertilizer and pesticides**.



Bamboo is a **rapid renewable material**. No manual forestation is required and the more it's harvested, the faster it grows.



The easy harvesting of bamboo **avoids the emissions** required to cut down traditional wood.



Bamboo is a powerful carbon sink and **absorbs 5-10X more CO2** than traditional wood.



Bamboo is nature's **strongest fiber**. Its tensile strength per weight unit is greater than steel.



We construct our products using **low VOC glues**, which helps create safer air quality.



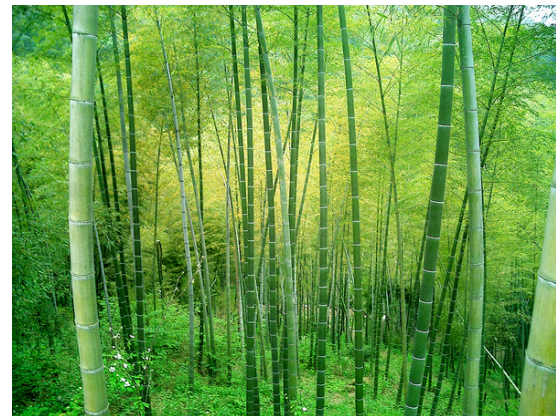
Our manufacturing facilities are **FSC Certified** (FSC certification ensures that products come from responsibly managed forests that provide environmental, social and economic benefits).



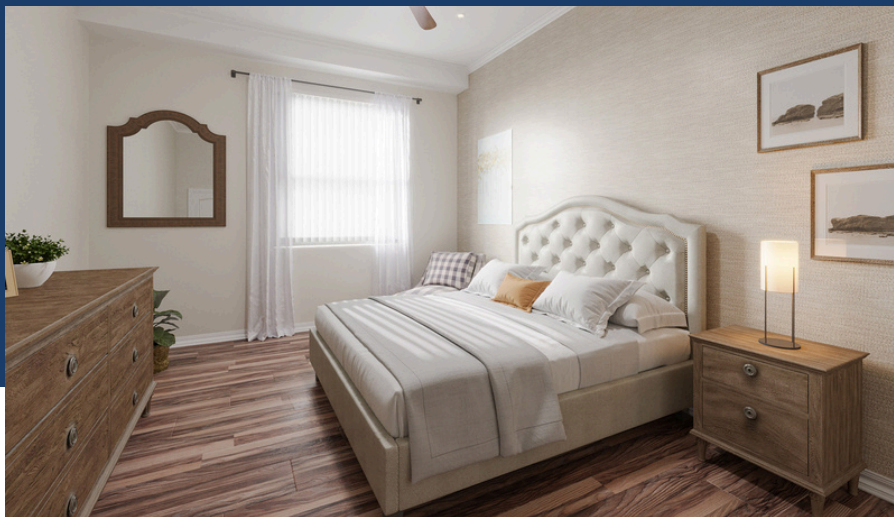
We use locally sourced steel and aluminum. Both are **eco-friendly materials that can be recycled and reused repeatedly** without degrading value.



Steel requires **little energy to produce** and its waste is reusable.



SPACE FOR SWEET DREAMING





S3 Uplifter Chair™ Toilet

The patented S3 Uplifter Chair™ Toilet, Pat. 11,957,282 is an innovative solution tailored for handicapped individuals, specifically addressing sit-to-stand mobility difficulties.



Patented lift-assist seat can **help decrease fall incidents**



Built-in lever paddles engage lift-assist seat, making 'sit-to-stand' safer and easier



A two-way hydraulic system **helps users sit and stand safely and easily**



Adjustable height and width make the Uplifter Assist a **perfect fit for most bathrooms**



Detachable legs make the Uplifter Assist **easily transportable** when traveling outside the home

DID YOU KNOW?

MORE THAN A 33% OF PEOPLE OVER AGE 65 SLIP AND FALL EACH YEAR. 80 PERCENT OF THOSE FALLS OCCUR IN THE BATHROOM.*

Centers for Disease Control and Prevention (CDC)

* Aging.com

- » Injuries getting on and off the toilet are high in people aged 65 and older, with individuals over 85 **suffering more than half of their injuries near the toilet***
- » Injuries occurring while getting on, off, or using the toilet **increase with age**, starting at 19.3% for people 65+ and reaching 36.9% for individuals 85+.
- » Every 11 seconds an older adult in the United States is treated in the emergency room for a fall.†
- » Every 19 minutes an older adult in the United States dies from a fall. †

PROCESS

HERE ARE THE TRADE SECRETS BEHIND OUR CUSTOMIZED PRODUCT DEVELOPMENT AND STRESS-FREE INSTALLS...

FOCUS & DESIGN

First, we visit your facility and meet with your team (including tenants, if agreed upon) to study location and style. We gain an understanding of your vision: visually, financially, and logistically. Then, we use our areas of expertise to create renderings, estimates, and product samples for your approval.

TRANSLATE & BUILD

We determine how to deliver the best products on time and at the lowest price. After prototypes are approved, manufacturing begins with dozens of our overseas quality control experts examining work in production, signing off on every item, and overseeing loading.

DELIVER & INSTALL

We manage the entire freight process for you. We schedule shippers, clear customs, receive, unload, inspect, and deliver everything directly to your site. Upon arrival, factory-trained personnel assemble and place items according to your plans.

REFRESH & SERVICE

Then you get to sit back and relax. We'll return free of charge for a maintenance call up to one year after installation under our innovative REFRESH program. Our techs will inspect, adjust, and touch up any items to get them looking and working as good as new. We promise an unbelievable experience, and this is how we walk the talk!





THE EASY WAY TO DECREASE
TENANT FALLS



S3 Uplifter Chair™ Dining, Pat. 9,861,542 B2

S3 Secure Sit to Stand Series

- » The S3 Uplifter Chair™ provides a safer environment for both patients and caregivers, giving you the freedom to focus on what's most important.
- » Proven to improve safety and independence with 'sit-to-stand' activities (moving from a sitting to a standing position) for adults with mobility challenges such as ALS, multiple sclerosis (MS), and lower extremity amputations.
- » Effectively improves safety and independence of older adults with increased fall risk.



Recessed handle assists in moving chair, **reducing caregiver injuries**



Patented lever-and-spring lift assist seat **decreases fall incidents**



Built-in lever paddles engage lift assist seat making 'sit-to-stand' **safer and easier**



Locking, weight activated swivels and casters **improve safety while moving**

CUSTOMIZE COLORS AND FABRICS TO COMPLEMENT YOUR YOUR INTERIOR

DID YOU KNOW?

NEARLY THREE MILLION ELDERLY AMERICANS ARE INJURED IN FALL RELATED ACCIDENTS EVERY YEAR.*

*Source: CDC.gov



S3 Secure Sit to Stand Series

- » The S3 Uplifter Chair™ provides a safer environment for both patients and caregivers, giving you the freedom to focus on what's most important.
- » Proven to improve safety and independence with 'sit-to-stand' activities (moving from a sitting to a standing position) for adults with mobility challenges such as ALS, multiple sclerosis (MS), and lower extremity amputations.
- » Effectively improves safety and independence of older adults with increased fall risk.

DID YOU KNOW?

NEARLY THREE MILLION
ELDERLY AMERICANS ARE
INJURED IN FALL RELATED
ACCIDENTS EVERY YEAR.*

*Source: CDC.gov



Recessed handle assists
in moving chair, **reducing**
caregiver injuries



Patented lever-and-
spring lift assist seat
decreases fall incidents



Built-in lever paddles
engage lift assist seat
making 'sit-to-stand'
safer and easier



Locking, weight
activated swivels and
casters **improve safety**
while moving

**CUSTOMIZE COLORS AND FABRICS TO
COMPLEMENT YOUR YOUR INTERIOR**



S3 Uplifter Chair™ Dining, Pat. 9,861,542 B2
S3 Uplifter Chair™ Pat. 10,327,970 B2.

S3 Secure Sit to Stand Series

- » The S3 Uplifter Chair™ provides a safer environment for both patients and caregivers, giving you the freedom to focus on what's most important.
- » Proven to improve safety and independence with 'sit-to-stand' activities (moving from a sitting to a standing position) for adults with mobility challenges such as ALS, multiple sclerosis (MS), and lower extremity amputations.
- » Effectively improves safety and independence of older adults with increased fall risk.



S3 Uplifter Chair™ Pat. 10,327,970 B2.



Recessed handle assists in moving chair, **reducing caregiver injuries**



Patented lever-and-spring lift assist seat **decreases fall incidents**



Built-in lever paddles engage lift assist seat making 'sit-to-stand' **safer and easier**



Locking, weight activated swivels and casters **improve safety while moving**

DID YOU KNOW?

NEARLY THREE MILLION ELDERLY AMERICANS ARE INJURED IN FALL RELATED ACCIDENTS EVERY YEAR.*

*Source: CDC.gov

CUSTOMIZE COLORS AND FABRICS TO COMPLEMENT YOUR YOUR INTERIOR



S3 Secure Sit to Stand Series

- » The S3 Uplifter Chair™ provides a safer environment for both patients and caregivers, giving you the freedom to focus on what's most important.
- » Proven to improve safety and independence with 'sit-to-stand' activities (moving from a sitting to a standing position) for adults with mobility challenges such as ALS, multiple sclerosis (MS), and lower extremity amputations.
- » Effectively improves safety and independence of older adults with increased fall risk.



S3 Uplifter Chair™ Pat. 10,327,970 B2.



Recessed handle assists in moving chair, **reducing caregiver injuries**



Patented lever-and-spring lift assist seat **decreases fall incidents**



Built-in lever paddles engage lift assist seat making 'sit-to-stand' **safer and easier**



Locking, weight activated swivels and casters **improve safety while moving**

DID YOU KNOW?

NEARLY THREE MILLION ELDERLY AMERICANS ARE INJURED IN FALL RELATED ACCIDENTS EVERY YEAR.*

*Source: CDC.gov

CUSTOMIZE COLORS AND FABRICS TO COMPLEMENT YOUR YOUR INTERIOR



S3 Secure Sit to Stand Series



- » The S3 Uplifter Chair™ provides a safer environment for both patients and caregivers, giving you the freedom to focus on what's most important.
- » Proven to improve safety and independence with 'sit-to-stand' activities (moving from a sitting to a standing position) for adults with mobility challenges such as ALS, multiple sclerosis (MS), and lower extremity amputations.
- » Effectively improves safety and independence of older adults with increased fall risk.

DID YOU KNOW?

NEARLY THREE MILLION
ELDERLY AMERICANS ARE
INJURED IN FALL RELATED
ACCIDENTS EVERY YEAR.*

*Source: CDC.gov



Recessed handle assists
in moving chair, **reducing**
caregiver injuries



Patented lever-and-
spring lift assist seat
decreases fall incidents



Built-in lever paddles
engage lift assist seat
making 'sit-to-stand'
safer and easier



Locking, weight
activated swivels and
casters **improve safety**
while moving

**CUSTOMIZE COLORS AND FABRICS TO
COMPLEMENT YOUR YOUR INTERIOR**



S3 Uplifter Chair™ Pat. 10,327,970 B2.



CUSTOMIZE YOUR ORDER

F3 collaborates with you and your tenants to blend our design experience with your vision.

**FOR MORE INFORMATION ON CUSTOMIZING YOUR ORDER,
CALL US AT 888.335.6881**

UPHOLSTERY

Our made-to-order upholstery is as sturdy as it is stylish. We exceed standard commercial specs to stand up to daily use. The 100K double rub leathers, stain-proof microfibers, and soft-touch vinyls are difficult to damage and easy to clean. If your project calls for a different fabric, we can source your favorite type.

POPULAR UPHOLSTERY COLORS



Otter



Pewter



Royal



Storm

LEATHER & VINYL

In the durability debate, leather's better, and vinyl's final. We avoid taking sides by offering both. Step up to split leathers in every color of the rainbow with your choice of soft or sleek finish. Or play it safe with our virtually indestructible, surprisingly supple, wipe-clean vinyl.

POPULAR LEATHER & VINYL COLORS



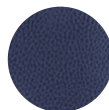
Black



Dark Brown



Gray



Navy

POWDER COATING

F3 metal products are powder coated electrostatically with an epoxy powder, then heated to 390°F, fusing into a beautiful protective finish. In addition to being durable, powder coating is an attractive choice due to environmental advantages. All are available in a limitless range of colors and textures. You can be sure you're buying the most durable finish available. It's tough, long-lasting, and looks great.

POPULAR POWDER COATING COLORS



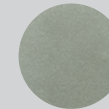
Black - Matte



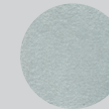
Brass



Golden Bronze



Gunmetal



Platinum

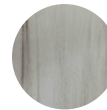


White - Matte

WOOD/LAMINATE

Everyone loves the look of natural wood but could do without the warping and splitting. Laminated wood solves the problem but often looks fake. Not ours. We emphasize solid bamboo posts, frames, and thick sheeted panels with a 7-layer finishing process for a deep, lustrous, natural look.

POPULAR LAMINATE FINISHES



Barnwood



Oak



Salvaged Plank



Terra

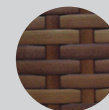


White

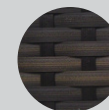
WEATHER & WICKER

Outdoor furnishings face the tough trifecta of water, sun, and sitting. Weather proof textiles use synthetic fibers in an open weave for easy moisture migration. Traditional wicker is upgraded with sun resistant binding wrapped around each strand. Both ensure comfort for years.

POPULAR WICKER FINISHES



Brown Pine



Flash Espresso



Light Panther



White Washed

