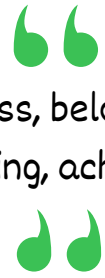




# Newsletter



Kindness, belonging,  
believing, achieving

September 2025

## Message from our

## Executive Headteacher:

What a fantastic start to the school year it's been! We've welcomed new pupils who are settling in beautifully, with wonderful friendships already beginning to blossom. The energy and engagement across both sites has been truly inspiring — from classroom learning to outdoor adventures, our pupils are thriving.

One of the highlights has been the adventures of Gerald the Giraffe, who's been joining our pupils on outings and bringing a lot of joy and curiosity to our days. Gerald has quickly become a much-loved member of our school community!

We're also excited to have launched our "In the Community" framework, which will see even more trips, experiences, and meaningful engagement with the wider community. It's all part of our commitment to nurturing confident, compassionate learners who feel connected to the world around them.

Thank you to all our staff, families, and pupils for making the start of this year so special.

Warm wishes,

Mrs Quantrill

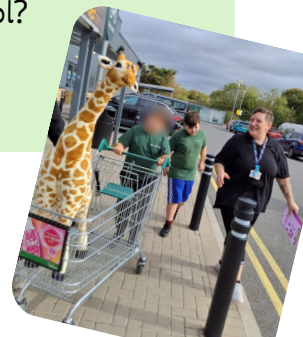
Executive Headteacher

**Gerald  
the  
Giraffe**



Something tall and unexpected has popped up in school... and it's got everyone talking!

Meet our mystery guest: **Gerald the Giraffe**, spotted peeking through a door, clearly up to something cheeky. But what exactly has Gerald been doing around school?



# Message from our Pastoral Lead

We've had a fantastic start to the new school year, and it's been wonderful to see the children so engaged and enthusiastic in their learning.

!!  
A gentle reminder: if you haven't yet returned your child's consent form, please do so at your earliest convenience. These forms are important for ensuring we can support your child fully in all aspects of school life.

Our catering team is currently reviewing the school menu to ensure it reflects children's preferences and dietary needs. A letter will be sent home shortly with more details, including how to update us on any allergies or requirements.

The children are looking very smart in their uniforms! For those asking about where to purchase additional items, you can visit: [www.gemzthreadz.co.uk](http://www.gemzthreadz.co.uk).

Finally, please remember that regular attendance is key to giving children the best possible start in life. It supports learning, social development, and friendships. If your child is absent, please report it by 9am, and ensure that proof is provided for any medical appointments.

Thank you for your continued support.

Miss Kinsville

## Feedback



As part of our ongoing commitment to improving communication, we'd love to hear from you.

How do you usually get in touch with us? Do you feel you receive timely responses from staff?

Your feedback is always welcome—please email us at [akinsville@woodendfarm.school](mailto:akinsville@woodendfarm.school) or contact me directly on 07523 683372.

## School Term Dates

Autumn Half Term 1: 3<sup>rd</sup> Sept 2025 to 24<sup>th</sup> Oct 2025

Autumn Half Term 2: 4<sup>th</sup> Nov 2025 to 19<sup>th</sup> Dec 2025

Spring Half Term 1: 6<sup>th</sup> Jan 2026 to 13<sup>th</sup> Feb 2026

Spring Half Term 2: 23<sup>rd</sup> Feb 2026 to 27<sup>th</sup> Mar 2026

Summer Half Term 1: 14<sup>th</sup> Apr 2026 to 22<sup>nd</sup> May 2026

Summer Half Term 2: 1<sup>st</sup> Jun 2026 to 20<sup>th</sup> Jul 2026



**If you have any questions feel free to contact us.**



[admin@woodendfarm.school](mailto:admin@woodendfarm.school)



01376 790 202

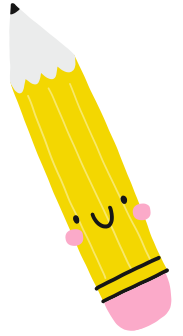


# Introducing our School Council...

We're delighted to introduce our newly elected School Council! A group of enthusiastic pupils have been chosen to represent student voices and help shape the future of our school.



We're also proud to introduce our newly elected School Council representatives:



This term, council members have been busy gathering feedback from their peers, discussing ideas to improve school life, and planning upcoming initiatives.

Recent topics have included:

- Enhancing playground equipment and lunchtime activities
- Promoting our values across the school

The council will meet regularly to share ideas, discuss improvements, and work on exciting projects that benefit the whole school community. It's a brilliant opportunity for our pupils to develop leadership, teamwork, and communication skills—and we can't wait to see what they achieve this year!





# Role Model of the Month

We'd like to take a moment to celebrate Jack, our Role Model of the Month.

Jack has consistently shown outstanding leadership and responsibility throughout the school. His thoughtful actions and positive attitude have made a real difference—not just in the classroom, but across the entire school community.

Jack continues to show what it means to be a true role model, displaying kindness, maturity, and initiative in everything he does.

We're incredibly proud of the impact he's making and grateful to have him as part of our school.





# Ash Class


Since returning to school, the children of Ash Class have slipped seamlessly back into routine — and what a joyful return it's been! Our vision of embedding our core values into everything we do has truly come to life, sparking celebrations left, right, and centre. We are absolutely loving the confident, kind, and curious individuals the children are becoming, and it's clear they're just as proud of themselves as we are of them.

In Creative Arts, we've been exploring the world of portraits and self-expression through collage. The children have been reflecting on who they are and how they see themselves, culminating in a stunning art gallery hosted by the class. It was a beautiful moment to see their personalities shine through their work — and the pride on their faces was priceless!

Miss Magnus was absolutely blown away by the children's understanding of the digestive system. Their ability to recall and explain the process with such clarity and enthusiasm was nothing short of impressive. Science has never looked so exciting!

Our interventions continue to be a whirlwind of mess, craft, and a whole lot of fun — just the way we like it! These sessions are not only supporting learning but also building confidence and creativity in the most joyful ways. We're also looking forward to upcoming community visits, because let's be honest — that's where Ash Class truly thrives. Whether it's exploring, connecting, or sharing our learning, we can't wait to take our values beyond the classroom walls.

Here's to a term full of growth, giggles, and greatness!



# Beech Class

This week, Beech Class embraced outdoor learning with joyful enthusiasm as they explored the water tuff tray in the garden. Despite the grey skies overhead, the children's spirits were bright—they played together beautifully, sharing resources, space, and laughter. It was a heart-warming display of teamwork, curiosity, and budding friendships. Moments like these remind us how powerful outdoor play can be in nurturing collaboration and joyful learning.


Beech Class have been busy exploring key maths concepts through hands-on learning. The children worked together to compare heights, measure items, and sort objects from smallest to biggest and lightest to heaviest. They measured each other's heights and weighed classroom items, showing fantastic teamwork and curiosity. It was a brilliant way to build understanding of size and weight while learning collaboratively. Well done Beech Class for your fantastic Maths this week!









# Oak Class



Oak Class has had a wonderfully creative and active start to the term! In art, we've been exploring the fascinating world of self-portraits, looking at famous artists and their unique styles before creating our own expressive pieces. The children showed great focus and individuality in their work—each portrait tells a story!

We also had our first swimming lesson, which was a big hit! The boys especially had a fantastic time building confidence in the water, splashing, laughing, and learning new skills. It was lovely to see their enthusiasm and teamwork in action.

Creativity has been flowing in the classroom too, with children designing and making all sorts of imaginative creations—including Solly's brilliant kite, which sparked lots of interest and inspiration among his classmates. In science, we've been diving into the topic of the human body, learning about organs, systems, and how everything works together to keep us healthy. The children have been full of questions and curiosity, making it a truly engaging learning experience.



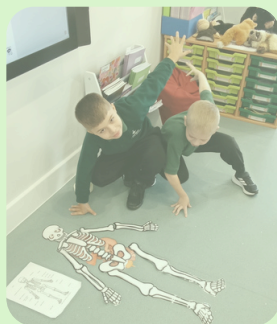
We've had a fantastic beginning to the new school year in Willow Class! All five boys have settled in beautifully and are already forming strong, positive relationships with both staff and their peers. It's been heart-warming to see them supporting one another and embracing our school values from day one.

A real highlight this month was our WOW Day, which launched our 'All About Me' topic. We transformed Willow Class into a vibrant museum, with interactive zones that sparked curiosity and teamwork. In the history section, the children brought in meaningful personal objects to share and discuss. In science, they collaborated to build a skeleton and explored the placement of internal organs, while also measuring different parts of their bodies. To top it off, we created a planetarium right in the classroom, allowing the children to explore space and make the experience truly immersive.

Every child was fully engaged, and it was inspiring to see such strong teamwork and enthusiasm so early in the term.

We're also thrilled to see the children actively participating in PE and lunchtime sports clubs with Mr Etheridge. Their encouragement of one another and commitment to our values is shining through.

We're looking forward to a joyful and enriching year ahead!



# Willow Class

# Thrive



At Woodend Farm School, Thrive helps our children feel safe, supported, and ready to learn.

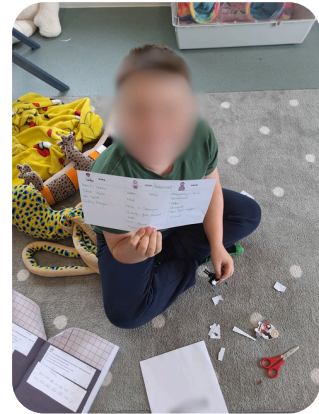


This term in Thrive, students have been exploring a range of developmental strands—from Being to Power and Identity—designed to support emotional resilience, self-awareness, and positive relationships.

We're pleased to announce that we are now opening Thrive sessions twice a week for students currently working below the Thinking strand. These targeted sessions aim to provide additional support tailored to each child's emotional and developmental needs.

If your child has been identified for these sessions, you will receive an email shortly with details about their start date and session times within the school day.

Thank you for your continued support in helping us nurture every child's wellbeing and growth.



## Upcoming Events



1<sup>st</sup> October to 31<sup>st</sup> October 2025 - Black History Month

10<sup>th</sup> October 2025 - World Mental Health Day

14<sup>th</sup> October 2025 - Battle of Hastings 1066

5<sup>th</sup> November 2025 - Bonfire Night

11<sup>th</sup> November 2025 - Remembrance Day

13<sup>th</sup> November to 17<sup>th</sup> November 2025 - Anti Bullying Week

TBC - Christmas Jumper Day

TBC - Christmas Panto




## Woodend Farm School Term and Holiday Dates - Academic Year 2025-2026

September 2025							October 2025							November 2025							December 2025						
M	T	W	T	F	S	S	M	T	W	T	F	S	S	M	T	W	T	F	S	S	M	T	W	T	F	S	S
									1	2	3	4	5						1	2	1	2	3	4	5	6	7
1	2	3	4	5	6	7	6	7	8	9	10	11	12	3	4	5	6	7	8	9	8	9	10	11	12	13	14
8	9	10	11	12	13	14	13	14	15	16	17	18	19	10	11	12	13	14	15	16	15	16	17	18	19	20	21
15	16	17	18	19	20	21	20	21	22	23	24	25	26	17	18	19	20	21	22	23	22	23	24	25	26	27	28
22	23	24	25	26	27	28	27	28	29	30	31			24	25	26	27	28	29	30	29	30	31				
29	30																										
January 2026							February 2026							March 2026							April 2026						
M	T	W	T	F	S	S	M	T	W	T	F	S	S	M	T	W	T	F	S	S	M	T	W	T	F	S	S
			1	2	3	4							1							1			1	2	3	4	5
5	6	7	8	9	10	11	2	3	4	5	6	7	8	2	3	4	5	6	7	8	6	7	8	9	10	11	12
12	13	14	15	16	17	18	9	10	11	12	13	14	15	9	10	11	12	13	14	15	13	14	15	16	17	18	19
19	20	21	22	23	24	25	16	17	18	19	20	21	22	16	17	18	19	20	21	22	20	21	22	23	24	25	26
26	27	28	29	30	31		23	24	25	26	27	28		23	24	25	26	27	28	29	27	28	29	30			
														30	31												
May 2026							June 2026							July 2026							August 2026						
M	T	W	T	F	S	S	M	T	W	T	F	S	S	M	T	W	T	F	S	S	M	T	W	T	F	S	S
				1	2	3	1	2	3	4	5	6	7			1	2	3	4	5						1	2
4	5	6	7	8	9	10	8	9	10	11	12	13	14	6	7	8	9	10	11	12	3	4	5	6	7	8	9
11	12	13	14	15	16	17	15	16	17	18	19	20	21	13	14	15	16	17	18	19	10	11	12	13	14	15	16
18	19	20	21	22	23	24	22	23	24	25	26	27	28	20	21	22	23	24	25	26	17	18	19	20	21	22	23
25	26	27	28	29	30	31	29	30						27	28	29	30	31			24	25	26	27	28	29	30
																					31						

 = Schooldays

 = School holidays

 = Bank holidays

 = Weekends

 = Non pupil day

In addition, schools allocate five non-pupil days out of the school days indicated,  
or the equivalent in disaggregated twilight sessions.

**Autumn Term:** Monday 1 September 2025 – Friday 19 December 2025 75 days

*Half Term 27 October – 31 October*

**Spring Term:** Monday 5 January 2026 – Friday 27 March 2026 55 days

*HalfTerm16February - 20February*

**Summer Term:** Monday 13 April 2026 – Monday 20 July 2026 65 days

*HalfTerm25May–29May,andMayBankHoliday - 4 May*

195 days