



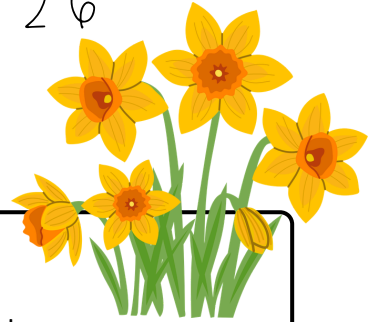
Woodend Farm school
Kindness comes in many forms

NEWSLETTER

May 2026

**EXECUTIVE
HEADTEACHER**

Message



As we look forward to the half-term break, I want to take a moment to recognise and celebrate the many achievements and shared experiences of our pupils over the past few weeks.

It has been fantastic to see the excitement around the introduction of Times Tables Rock Stars. Our pupils showed true confidence and belief in themselves as they embraced the challenge and it was wonderful to see so many creative rock star outfits! The joy, laughter and determination on display reflected our values of believing and achieving, as pupils worked together and supported one another to improve their learning.

In Forest School, we marked David Attenborough's birthday, giving pupils the opportunity to connect with nature and reflect on the importance of caring for the world around us. This experience highlighted our values of kindness and accountability, reminding us all of our responsibility to look after our environment and each other.

We also came together to recognise Mental Health Awareness Day, with staff and pupils wearing green to show support and raise awareness. This was a powerful moment of belonging and teamwork, reinforcing that we are a community where everyone is supported and valued and where we remember that 'it is okay not to be okay'.

Across all of these moments, I have been incredibly proud to see our pupils demonstrating kindness, resilience and a strong sense of identity.

As we head into the break, I hope this is a time for rest and reflection for all our families. We look forward to welcoming everyone back for what promises to be a wonderful and inspiring summer term, as we continue to learn, grow and achieve together.

Mrs Quantrill
Executive Headteacher





MESSAGE FROM OUR PASTORAL LEAD

Dear Parents and Carers,

I cannot believe that we are already at the end of the first half term of the summer term. The children have been thoroughly enjoying their learning, as well as trips to a variety of places and taking part in celebratory events such as Mental Health Week and our celebration of British Values.

Please remember that Friday 22nd May will be our last day of term. There will be many more opportunities for celebration next term, including Sports Day on 3rd July.

I would like to remind all parents and carers that any pastoral matters, including attendance, must be communicated directly to me or the school office.

For medical appointments, we must receive evidence; this can simply be a screenshot of the appointment confirmation. This helps us greatly in maintaining accurate attendance records and managing the school day effectively.

As the weather begins to warm up, please ensure that children come to school with sun cream already applied and bring a named sun hat. We will continue to support children in keeping safe in the sun and all classrooms are equipped with air conditioning to help keep them comfortable. If you wish to send in named sun cream, we are happy to assist children in reapplying it throughout the day.

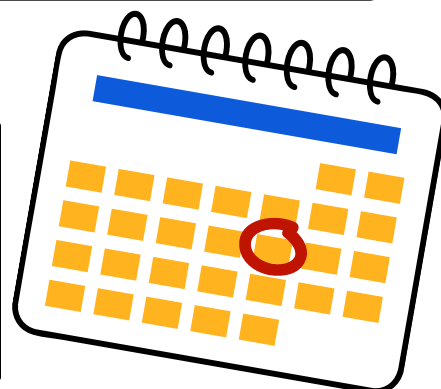
As we begin planning for the new school year in September, we will be asking all parents and carers to update their child's information. Please ensure that these forms are completed and returned by Friday 17th July so that our records remain accurate and up to date.

Wishing you all a wonderful half term break. We look forward to welcoming the children back on 1st June 2026.

Miss Kinsville

KEY DATES

Monday 1 st June 2026:	FIRST DAY BACK
Tuesday 2 nd June 2026:	CLASS ALLOCATION
Thursday 2 nd July 2026:	SCHOOL PHOTOS
Friday 3 rd July 2026:	SPORTS DAY
Friday 17 th July 2026:	SCHOOL REPORTS
Monday 20 th July 2026:	LAST DAY OF TERM



You can view our 26/27 academic calendar on our website.

ROLE MODEL OF THE MONTH



Congratulations to Tamzyn, who consistently demonstrates all of our school values.

Tamzyn has made excellent progress in developing her confidence when speaking with staff and has been very welcoming to new staff and students in her classroom. She makes a real effort to be a wonderful friend and shows kindness every day.

Tamzyn is an important part of our school community and we are very proud of the way she attends school each day and the positive values she shows.

Tamzyn has gone above and beyond to support other students, she gives 100% to her learning constantly, she is able to reflect on her choices, respond and take accountability.

Well done Tamzyn!

SCHOOL COUNCIL

I am so proud of our School Council, who have made a fantastic effort to attend each meeting and bring a range of brilliant ideas, as well as sharing the views of their peers.

The School Council also came up with the wonderful idea of having a blue, white and red non-uniform day to celebrate the King's Garden Party.

I have really enjoyed watching them work together as a team and seeing how full of ideas they are.

Well done to all members of the School Council!



HOUSE TEAMS

Congratulations to Honour House for winning the most points this half term!

They will be celebrating with a cream tea party together on the last day of term. Well done to all members of Honour House for the effort they have shown and the positive values they demonstrate in our school every day.

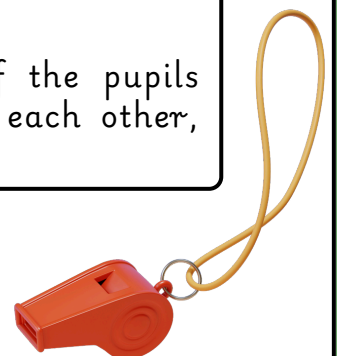
We are very proud of you, keep up the fantastic work!

PE

This term at Woodend Farm School we have been focusing on throwing, catching and striking in PE. All pupils have been learning lots of different throwing and catching techniques to build up their hand-eye coordination and their body positioning.

All of the pupils have participated in group games such as rounders and football. Rounders focussed on their hand-eye coordination when striking the ball and football focussed on foot-eye coordination, when striking the ball with their feet.

Sports club had an amazing turn out this term! All of the pupils demonstrated excellent sportsmanship and respect towards each other, the equipment and the staff who supported them.



FOREST SCHOOL

This term in Forest School, our learners and staff have continued to nurture our Forest School community from the roots up. From mastering our Forest School rules to working together outdoors, everyone has embraced learning through play, exploration and teamwork.

Our learners have been busy developing an impressive range of practical tool skills. They've learned how to use tools safely and purposefully, sawing logs, whittling sticks into spinning tops, peeling fruit and vegetables, drilling, sawing, stapling and even lining pallets to create stylish herb planters. Their confidence and competence have grown beautifully with every session.

Campfire cooking has been another highlight. Learners and staff have practised fire safety and food hygiene while building and lighting their own campfires. Together, they've created a delicious menu of woodland treats including homemade garlic bread, pancakes and, of course, our Forest School favourite, gooey, golden s'mores.

Learners also celebrated David Attenborough's 100th birthday by exploring fascinating facts about his life and discussing his incredible achievements. This sparked thoughtful conversations about nature; conservation themes that resonate deeply with our Forest School ethos.

As the term has progressed, learners have begun to explore more independently, showing curiosity, imagination and creativity in abundance. It's been wonderful to see them take ownership of their learning and embrace the wonder of the outdoors

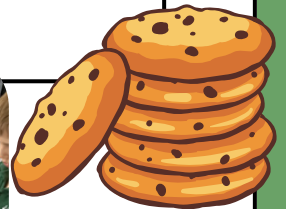


BEECH CLASS

Beech Class has had a fantastic month, with the pupils showing impressive teamwork and enthusiasm across their lessons. Their engagement in cooking has been a real highlight, as they worked together to bake delicious banana muffins and flapjacks topped with chocolate, all while discussing what makes a healthy and balanced diet.

In maths, the pupils have thrown themselves into learning about money, confidently taking on the roles of shopkeepers and customers, both in structured lessons and during imaginative role-play.

Their willingness to support one another, share ideas and stay fully involved has created a brilliant learning atmosphere that truly reflects the spirit of the class.

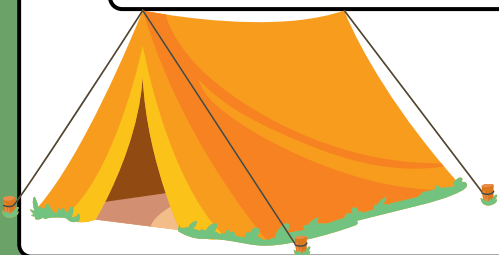


MAPLE CLASS

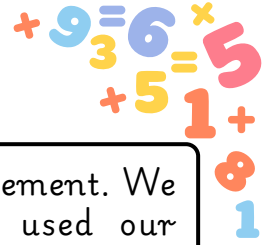
This term, Maple Class have loved exploring The Three Little Pigs through a range of creative, hands-on activities. The children enthusiastically built houses using materials such as sand, straw, twigs and bricks, investigating which were the strongest and safest.

As part of our Home Sweet Home topic, we enjoyed several exciting experiences. We visited Maldon High Street and the local church to learn about our community, went camping on the school field to explore life on a farm, and had a fantastic trip to the beach where we built sandcastles inspired by the story. We also visited Toby Carvery, where we learned about the role of cooking and food in a home.

We are incredibly proud of the children's curiosity, teamwork and creativity throughout this topic and look forward to continuing our learning together.



ASH CLASS



Ash Class has had a wonderful term full of learning and achievement. We explored different types of houses in our community and used our imaginations to create magical homes inspired by Disneyland.

In Science, we investigated insulation, testing materials and working like real scientists. Maths kept us busy measuring length and mass, with fun estimation games along the way.

We've also built confidence in times tables through TT Rockstars, cheering each other on, and we've ended the term by exploring bullying awareness with thoughtfulness and empathy.

Ash Class continues to shine, living our values of Kindness, Achieving, Belonging and Believing every day.



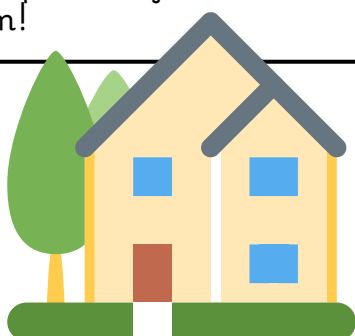
OAK CLASS

Oak Class have had a busy and exciting half term! The pupils have been learning about homes around the world, showing great curiosity as they explored how people live in different environments. In Science and Technology, they designed and built mini model homes, demonstrating fantastic creativity.

We also enjoyed several trips linked to our learning. At the beach, the pupils explored seaside homes and while at Hylands Park they visited Hylands House, looking closely at its architecture and discussing what makes it special.

Back in class, our Values and Den Day were a highlight. The pupils worked together to build an impressive den, showing excellent teamwork, cooperation and creativity.

We are very proud of their enthusiasm and the effort they have shown this half term!



WILLOW CLASS

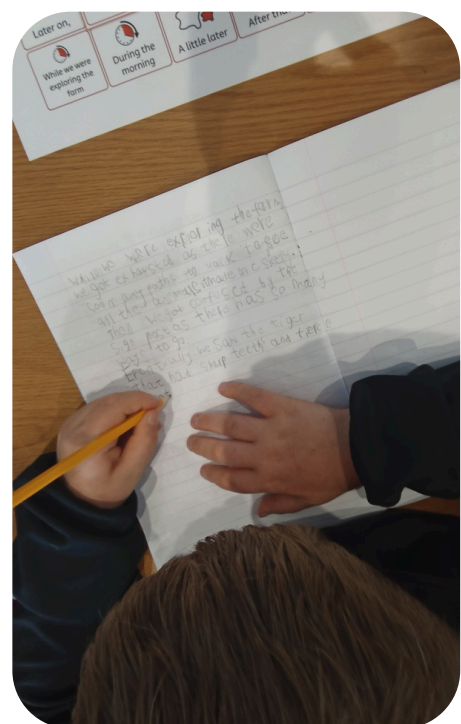
May has been an exciting and hands-on month, with Science truly coming to life through a range of engaging activities. The children explored renewable energy by building a solar-powered car, as well as a windmill and house model, developing both their creativity and understanding of sustainability.

A highlight of the month was our visit to Mountnessing Windmill, where pupils had the opportunity to explore the inside of a real working windmill. They learned about its history and discussed what life is like in rural areas. Inspired by their visit, the children expressed their creativity through beautiful watercolour paintings of the windmill.

We also enjoyed a trip to Witham High Street, where children developed their independence and decision-making skills by managing a small budget. They visited charity shops and carefully chose items to bring back for the classroom.

In Literacy we have been building on these experiences, by writing recounts of our memorable trip to Jimmy's Farm. The children have been encouraged to include their personal memories and emotions, helping to make their writing both vivid and meaningful.

It has been a wonderful month of learning, exploration, and creativity!



HOMWORK

Home Sweet Home - Maple

Home Water Play

Add cups, spoons, a small jug and a few 'home' items (plastic keys, toy people, toy furniture). Scoop and pour with cups and spoons.

Bubble Washing Station

Make a washing-up bowl with bubbly water. Wash toy plates/cups or plastic animals. Squeeze sponges and watch the bubbles pop!

Sound Hunt at Home

Find safe noisy things (foil, empty bottle with rice, wooden spoon). Shake/tap them while you listen to a cosy home story.

Texture Tray: Cosy Home

Fill a tray with soft blanket, smooth spoon, bumpy sponge, crinkly paper. Let your child explore freely and choose what they like.

Smell & Stir 'Kitchen Potions'

In bowls of water, add safe smells (lemon slice, mint, cinnamon stick). Stir and watch it swirl. Talk about 'kitchen smells'.

Blanket Den Time

Build a tiny den with blankets/cushions. Bring a book inside and enjoy a calm 'home corner'.

Here are some home learning ideas to enhance your child's learning in school. If you do choose to complete any activities, please upload them to ClassDojo!!

Home Sweet Home - Beech

Story Bag Surprise: Home Items

Fill a bag with items (spoon, sock, keyring, sponge). Let your child pull one out and feel it. Say: 'This spoon helps us eat at home!'

Home Treasure Hunt

Hide objects and give clues like 'Find something soft for the bed!' or 'Find something shiny from the kitchen!'

Build a Cosy Corner

Use cushions/blankets to make a snug reading space. Choose a favourite book and read inside.

Mini Tea Party

Set up a 'home café' with cups/plates. Practise pouring drinks (water/juice) and offering snacks.

Cleaning Helper Game

Match cloths/sponges to tasks: wipe table, 'wash' toy dishes, tidy toys into boxes. Celebrate being a home helper!

Make a Door Sign

Decorate a simple sign: 'Welcome', 'My Bedroom', or 'Quiet Corner'. Use stickers, colours and shapes.

Here are some home learning ideas to enhance your child's learning in school. If you do choose to complete any activities, please upload them to ClassDojo!!

HOMWORK

Home Sweet Home - Ash

Room Designer Challenge

Choose a room (bedroom, kitchen, living room). Draw it and add furniture. Can you label 3 items (e.g., bed, sofa, table)?

Kitchen Recipe with Measurements

Make a simple snack (sandwich, fruit salad, wrap). Write a recipe using measurements (e.g., 2 slices of bread, 1 spoon of spread, 5 grapes).

Build a Mini House

Use a cereal box or recycled materials to build a small house. Add windows, doors and a roof. Can you add a garden or fence?

Home Helpers Menu

Create a 'Home Helpers' chart for the week (e.g., set the table, feed a pet, tidy toys). Tick off jobs and celebrate your helping!

Soundtrack of a Home Day

Make sound effects for home moments (doorbell, kettle, footsteps, rain on windows). Use drums, pots/spoons or clapping. Can you make a morning and bedtime soundtrack?

Home Science: Melting & Freezing

Freeze water in a cup (add food colouring if you like). Watch it melt in different places (warm room vs. shaded spot). What changes fastest? (Adult supervision.)

Here are some home learning ideas to enhance your child's learning in school. If you do choose to complete any activities, please upload them to ClassDojo!!

Home Sweet Home - Willow

Build the Setting: My Home

Use cushions, boxes and blankets to build a 'home scene' (living room/bedroom). Add a pretend TV, bed or table.

Character Costume Challenge

Dress up as a 'home helper' (chef, cleaner, builder, gardener). Add props like a spoon, cloth, tape measure (toy).

Home Map Adventure

Draw a map of your home (rooms, stairs, garden). Add a key and simple directions (left/right, upstairs/downstairs).

Design a Dream Bedroom

Plan your dream room: colours, bed, storage, reading corner. What would make it calm and cosy?

Home Puppet Show

Make simple puppets (socks/paper/spoons) and act out a 'day at home' scene (waking up, cooking, bedtime story).

Design a Home Poster

Create a colourful poster: 'Home Sweet Home' with your house, family/pets (if you like), and favourite room.

Here are some home learning ideas to enhance your child's learning in school. If you do choose to complete any activities, please upload them to ClassDojo!!

HOMWORK

Home Sweet Home - Oak

Home Helper Points Challenge

Make a points chart for tasks (tidy toys = 2, set table = 3). Add up your total and try to beat it tomorrow!

My Home Budget Shop

Set up a pretend shop with price tags. 'Buy' snack items with coins. Count totals and find the correct change.

House Blueprint Design

Draw a floor plan with labelled rooms. Add measurements (steps, rulers, or paper squares). Which room is biggest?

Home Map + Compass Directions

Make a map including a key and compass directions (N/E/S/W). Mark hazards (stairs, slippery floor) and safe routes.

Build a Strong Roof STEM Test

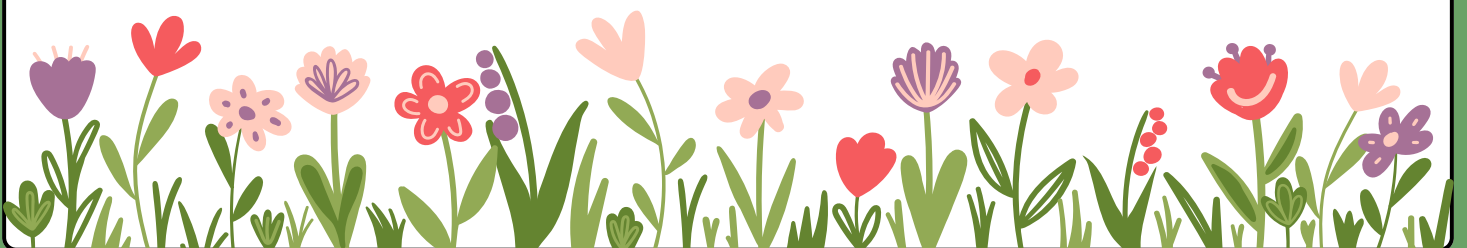
Use paper/card to build a roof for a toy house. Test it with small weights (coins). How can you make it stronger?

Home Security Puzzle

Create a 'safe entry' plan: where to put keys, how to check doors, who to tell if worried. Write a 5-step checklist.

Here are some home learning ideas to enhance your child's learning in school. If you do choose to complete any activities, please upload them to ClassDojo!!

Here are some home learning ideas to enhance your child's learning in school. If you do choose to complete any activities, please upload them to Class Dojo!





Woodend Farm school
Kindness comes in many forms

Woodend Farm School Term and Holiday Dates - Academic Year 2025-2026

September 2025							October 2025							November 2025							December 2025						
M	T	W	T	F	S	S	M	T	W	T	F	S	S	M	T	W	T	F	S	S	M	T	W	T	F	S	S
									1	2	3	4	5						1	2	1	2	3	4	5	6	7
●	●	3	4	5	6	7	6	7	8	9	10	11	12	●	4	5	6	7	8	9	8	9	10	11	12	13	14
8	9	10	11	12	13	14	13	14	15	16	17	18	19	10	11	12	13	14	15	16	15	16	17	18	19	20	21
15	16	17	18	19	20	21	20	21	22	23	24	25	26	17	18	19	20	21	22	23	22	23	24	25	26	27	28
22	23	24	25	26	27	28	27	28	29	30	31			24	25	26	27	28	29	30	29	30	31				
29	30																										

January 2026							February 2026							March 2026							April 2026						
M	T	W	T	F	S	S	M	T	W	T	F	S	S	M	T	W	T	F	S	S	M	T	W	T	F	S	S
			1	2	3	4							1							1			1	2	3	4	5
●	6	7	8	9	10	11	2	3	4	5	6	7	8	2	3	4	5	6	7	8	●	6	7	8	9	10	11
12	13	14	15	16	17	18	9	10	11	12	13	14	15	9	10	11	12	13	14	15	13	14	15	16	17	18	19
19	20	21	22	23	24	25	16	17	18	19	20	21	22	16	17	18	19	20	21	22	20	21	22	23	24	25	26
26	27	28	29	30	31		23	24	25	26	27	28		23	24	25	26	27	28	29	27	28	29	30			
														30	31												

May 2026							June 2026							July 2026							August 2026							
M	T	W	T	F	S	S	M	T	W	T	F	S	S	M	T	W	T	F	S	S	M	T	W	T	F	S	S	
				1	2	3	1	2	3	4	5	6	7			1	2	3	4	5							1	2
4	5	6	7	8	9	10	8	9	10	11	12	13	14	6	7	8	9	10	11	12	3	4	5	6	7	8	9	
11	12	13	14	15	16	17	15	16	17	18	19	20	21	13	14	15	16	17	18	19	10	11	12	13	14	15	16	
18	19	20	21	22	23	24	22	23	24	25	26	27	28	20	21	22	23	24	25	26	17	18	19	20	21	22	23	
25	26	27	28	29	30	31	29	30						27	28	29	30	31			24	25	26	27	28	29	30	
																					31							

- = Schooldays □ = School holidays □ = Bank holidays
- = Weekends ● = Non pupil day

In addition, schools allocate five non-pupil days out of the school days indicated,
or the equivalent in disaggregated twilight sessions.

Autumn Term:	Monday 1 September 2025 – Friday 19 December 2025	75 days
	<i>Half Term 27 October – 31 October</i>	
Spring Term:	Monday 5 January 2026 – Friday 27 March 2026	55 days
	<i>Half Term 16 February – 20 February</i>	
Summer Term:	Monday 13 April 2026 – Monday 20 July 2026	65 days
	<i>Half Term 25 May – 29 May, and May Bank Holiday – 4 May</i>	
		195 days

Essex County Council School Term and Holiday Dates for Community and Voluntary Controlled Schools - Academic Year 2026-2027

September 2026							October 2026							November 2026							December 2026						
M	T	W	T	F	S	S	M	T	W	T	F	S	S	M	T	W	T	F	S	S	M	T	W	T	F	S	S
										1	2	3	4							1		1	2	3	4	5	6
	●	●	3	4	5	6	5	6	7	8	9	10	11	●	3	4	5	6	7	8	7	8	9	10	11	12	13
7	8	9	10	11	12	13	12	13	14	15	16	17	18	9	10	11	12	13	14	15	14	15	16	17	18	19	20
14	15	16	17	18	19	20	19	20	21	22	23	24	25	16	17	18	19	20	21	22	21	22	23	24	25	26	27
21	22	23	24	25	26	27	26	27	28	29	30	31		23	24	25	26	27	28	29	28	29	30	31			
28	29	30												30													

January 2027							February 2027							March 2027							April 2027							
M	T	W	T	F	S	S	M	T	W	T	F	S	S	M	T	W	T	F	S	S	M	T	W	T	F	S	S	
				1	2	3	1	2	3	4	5	6	7	1	2	3	4	5	6	7					1	2	3	4
●	5	6	7	8	9	10	8	9	10	11	12	13	14	8	9	10	11	12	13	14	5	6	7	8	9	10	11	
11	12	13	14	15	16	17	15	16	17	18	19	20	21	15	16	17	18	19	20	21	●	13	14	15	16	17	18	
18	19	20	21	22	23	24	22	23	24	25	26	27	28	22	23	24	25	26	27	28	19	20	21	22	23	24	25	
25	26	27	28	29	30	31								29	30	31					26	27	28	29	30			

May 2027							June 2027							July 2027							August 2027							
M	T	W	T	F	S	S	M	T	W	T	F	S	S	M	T	W	T	F	S	S	M	T	W	T	F	S	S	
					1	2		1	2	3	4	5	6					1	2	3	4							1
3	4	5	6	7	8	9	7	8	9	10	11	12	13	5	6	7	8	9	10	11	2	3	4	5	6	7	8	
10	11	12	13	14	15	16	14	15	16	17	18	19	20	12	13	14	15	16	17	18	9	10	11	12	13	14	15	
17	18	19	20	21	22	23	21	22	23	24	25	26	27	19	20	21	22	23	24	25	16	17	18	19	20	21	22	
24	25	26	27	28	29	30	28	29	30					26	27	28	29	30	31	23	24	25	26	27	28	29		
31																					30	31						

- = Schooldays
 = School holidays
 = Bank holidays
 = Weekends
 = Non pupil days

In addition, schools allocate five non-pupil days out of the school days indicated, or the equivalent in disaggregated twilight sessions.

Autumn Term:	Tuesday 1 September 2026 – Friday 18 December 2026 <i>Half Term 26 October – 30 October</i>	74 days
Spring Term:	Monday 4 January 2027 – Thursday 25 March 2027 <i>Half Term 15 February - 19 February</i>	54 days
Summer Term:	Monday 12 April 2027 – Wednesday 21 July 2027 <i>Half Term 31 May – 4 June, and May Bank Holiday - 3 May</i>	67 days
		195 days

Please note:

The above dates may vary for individual schools, especially Foundation, Voluntary Aided schools and Academies.

You are strongly advised to check with your child's school before making any holiday or other commitments.