



Woodend Farm school

Kindness comes in many forms

July 2025 Newsletter

As we come to the end of a vibrant and fulfilling month, I want to take a moment to reflect on the many highlights that have brought joy, pride, and a deep sense of community to our school. This past month has been nothing short of exceptional. Our Sports Day was a true celebration of teamwork and spirit, with children, parents, and staff coming together in a wonderful display of unity and enthusiasm. It was a joy to witness the smiles, encouragement, and shared moments that made the day so special.

Our pupils have also enjoyed enriching experiences beyond the classroom, including a delightful trip to the petting zoo and continued progress in swimming lessons, where their confidence and skills have grown tremendously. Across the school, pupil progress meetings have shown clear and consistent development, a testament to the hard work of both staff and students.

Despite the recent heat, our pupils have shown remarkable resilience and exemplary behaviour. Their growing understanding of our school values and their ability to reflect on their actions is something we are incredibly proud of.

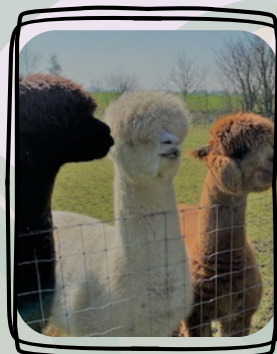
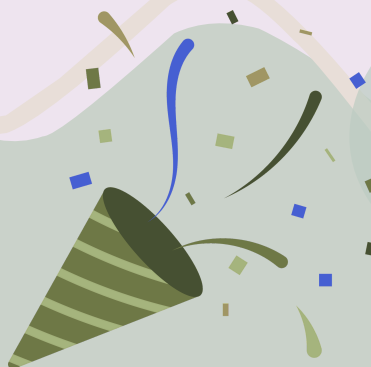
Participation in sports clubs has soared, and it's been fantastic to see so many children engaging with energy and passion. Transitions into new classes have gone smoothly, with smiles and excitement all around as pupils prepare for their next steps.

Our celebration assemblies have been a joyful way to recognise the achievements and values demonstrated by our pupils. It's been heartwarming to see every child's efforts acknowledged and celebrated.

As we now look ahead to the summer break, I want to thank our entire school community—pupils, staff, and families—for your continued support, dedication, and positivity.

We wish you all a wonderful, restful, and safe summer holiday. We look forward to welcoming everyone back refreshed and ready for another fantastic year ahead.

Mrs Quantrill
Executive Head Teacher



Kindness



Belonging



Believing



Achieving



Woodend Farm school

Kindness comes in many forms

Reminders

Wow, what a spectacular sport's day. I just want to say, thank you so much for joining us on the day. It was incredible to see so many parents cheering the children on and I know it was so special for you all too.

There are many contact forms and media consents that have not been completed and returned. Please could I have these as soon as possible to ensure we have all the up to date and correct information.

Attendance certificates were sent out, well done to all of those with 100% attendance.

It has been an amazing term, and the children have had so much fun.

Wishing you an amazing summer holiday and cannot wait to see all the children and parents in September.

Anna Kinsvile

Well -being and Pastoral Lead

Term Dates

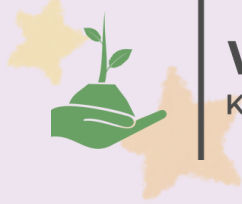
Last Day of Term - Tues 22nd July

Summer Holidays - Wed 23rd July to 31st August

Inset Days: 1st/2nd September

First Day Back: 3rd September





Woodend Farm school
Kindness comes in many forms

Role Model of the Month



Matthew has worked incredibly hard throughout his time at Woodend Farm School. He consistently demonstrates our values and took his role as a school councillor seriously, showing his commitment to bettering our school. Furthermore, Matthew models our values to all of our pupils, supporting his friends in doing the right thing, which is not always easy. Well done Matthew, your hard work has certainly paid off!

Ash Class

What a fantastic month it's been in Ash Class! The boys have truly embodied our core values of Kindness, Believing, Achieving, and Belonging in everything they've done.

Over in Maths, we've been finishing up our work on fractions. The boys now know exactly how to equally share a pizza—so no more arguments at dinner time! 🍕

Sports Day was a real highlight this term. The boys showed incredible resilience, cheering each other on and giving every event their all. Whether sprinting, jumping, or balancing, they demonstrated true team spirit and determination.

Our creative topic has been a big hit too! The boys have designed and brought to life their very own puppets, using a mix of materials and techniques. It's been wonderful to see their ideas take shape and their confidence grow as they performed with their creations.

As we move into transition weeks, we're so proud of how confidently the boys are adapting to change. They've shown great maturity and excitement about what's to come, and we know they'll continue to thrive as they take their next steps. Well done, Ash Class—you've had a brilliant month, and we're so proud of everything you've achieved! 🌈



Willow Class

Willow Class have been absolutely buzzing in every P.E. session, even with the scorching sun blazing down on us! Our little athletes have been truly inspiring, making sure they stay hydrated as we top up their refreshments regularly. They've been diving into all sorts of sports, including basketball, where they've been working on their balancing and coordination skills in such a fun way. Keep up the amazing work, Willow Class! We're incredibly proud of each and every one of you!

What a fantastic term it's been for Willow Class as they dove headfirst into their swimming lessons! Not only did everyone master the art of floating on their backs, but they also impressed us all by swimming across the entire pool. Bravo, little swimmers! After honing their skills, the fun didn't stop there – we even managed to dunk Mr Etheridge! The smiles were infectious as Willow Class transformed into a team of synchronised swimmers, showing off their new moves. A big well done to all for their hard work and enthusiasm!



Beech Class

This month has seen the end products of our Talk for writing sessions with each child becoming an author and illustrator producing their own amazing books. We have had stories about Danny the Lovely Seal, Bobby the Funny Seal, Riley the crazy Crab and an Ariel Atom car. The children have loved creating story maps, editing them and then using these to support them to create their own versions of the story.

Alongside their stories the children have also created fantastic pieces of artwork based on their stories, completed seaside wordsearches, completed summer cutting activities and made sandcastles in the tuft trays.

A massive thankyou for all coming to support sports day it was such a special event and was so amazing that all of you were there to share it with us.

From all of Beech class staff we just wanted to say what a privilege it has been to be a part of the children's journey at Woodend Farm this year and look forward to seeing them all continue to flourish next year.

Wishing you all a fantastic summer holiday.

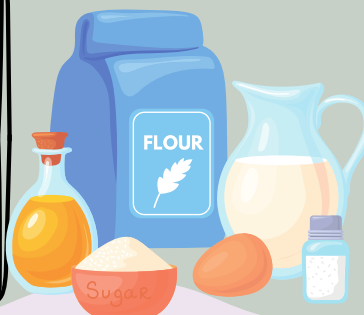


Oak Class

Oak Class has had a truly fantastic month, filled with a wonderful variety of activities that brought both joy and learning. From splashing around in swimming sessions to getting creative in the kitchen with some delicious baking, the children have embraced every opportunity with enthusiasm and curiosity.

In the classroom, they've been equally engaged, taking part in a range of exciting learning experiences that encouraged teamwork, problem-solving, and creativity. It's been heartwarming to see their confidence grow and friendships flourish as the term came to a close.

We're incredibly proud of all the hard work and positive energy our pupils have shown. It's been a joyful and rewarding end to the term, and we wish all our families a happy, restful, and safe summer holiday!



PE Achievements

Recently we had our annual sports day, and it was an absolute blast! All of the children took part and did their very best to secure the WIN for Woodend Farm School. The school have been working extremely hard in the hot weather during PE to improve themselves. The improvements were clear to see throughout sports day as the children took on a wide range of activities.

Mr Etheridge
PE Teacher



Let's help every child
thrive

As we approach the end of the school year, we are proud to highlight the positive progress our students have made through the Thrive program. This initiative has focused on nurturing social and emotional development in a fun, engaging, and meaningful way.

Classroom Activities

Throughout the month, each class participated in a variety of enjoyable and enriching activities. These were carefully designed to support emotional growth and social interaction, helping students build essential life skills without even realizing it.

Activities included:

- Collaborative games that encouraged teamwork and empathy
- Creative arts projects promoting self-expression
- Group discussions and storytelling to foster emotional awareness
- Mindfulness and reflection exercises to support self-regulation

Student Engagement

The students responded with enthusiasm and joy to every activity. Their participation was natural and wholehearted, showing how effective experiential learning can be in developing emotional intelligence. The smiles, laughter, and cooperation observed across classrooms were clear indicators of their thriving progress.

Conclusion

This month's Thrive activities have laid strong foundations for emotional resilience and social confidence. As students prepare to transition to new classes, they carry with them valuable skills that will support their continued development.

We look forward to building on this momentum in the academic year.



Support Services



If you become concerned about an imminent threat to life or risk of imminent and significant harm to someone's life, always contact the Police on 999.

COMPASS



Respect



COMPASS provides an initial point of contact that enables callers to speak with a trained member of staff who will complete an assessment and ensure contact is made with the most appropriate support service across Southend, Essex and Thurrock **call 0330 333 7 444 or complete their online contact form.**

Whatever you're going through, call the **Samaritans** any time, from any phone. This number is free to call from both landlines and mobiles, including pay-as-you-go mobiles. You do not need to have any credit or call allowance on your plan to **call 116 123.**

We know it can be a really difficult decision to speak out. **Crimestoppers** takes information about crime 100% anonymously. Reports of domestic abuse can be completed online or calling **Freephone 0800 555 111.**

The freephone, **24-hour National Domestic Abuse Helpline** provides information on how to access support, rights and options available for female victims of domestic abuse. You can reach their Helpline team by calling **Freephone 0808 2000 247.**

Respect is a national organisation focussed on increasing the safety of men experiencing domestic abuse (and the safety of any children) by providing confidential support calling **Freephone 0808 8010 327.**

ManKind is a national charity that provides help and support for male victims of domestic abuse and domestic violence. Their confidential helpline is available for all men across the UK suffering from domestic violence or domestic abuse by their current or former wife or partner (including same-sex partner) calling **Freephone 0808 800 1170.**

Abuse can happen at any time of the day or night. And when it does, it's vital that children have someone they can talk to – no matter the hour:

Help for adults concerned about a child call 0808 800 5000
Help for children and young people call Childline on 0800 1111

For non-emergency health or mental health concerns contact **NHS 111** (Option 2 for Mental Health). For emergency health or mental health concerns, go straight to A&E or dial **999 for urgent support.**

Report a concern about an adult if you are worried about their safety or wellbeing, suspect neglect, abuse or would like to report an incident. If you believe someone is in immediate danger, always dial 999.

- **Textphone: 0345 758 5592 or Telephone: 0345 603 7630**
- **Out of hours telephone: 0345 606 1212**
- **Email: socialcaredirect@essex.gov.uk**

If you are worried about a child or young person or maybe you're worried about something that's happened to you, a friend or someone you know. You don't have to leave your name if you don't want to. If you believe someone is in immediate danger, always dial 999.

- **Call the Children and Families Hub on 0345 603 7627**
- **Out of hours or bank holidays: 0345 606 1212**
- **Access 'Request for Support' form via www.essex.gov.uk**



Woodend Farm School Term and Holiday Dates - Academic Year 2025-2026

September 2025							October 2025							November 2025							December 2025						
M	T	W	T	F	S	S	M	T	W	T	F	S	S	M	T	W	T	F	S	S	M	T	W	T	F	S	S
									1	2	3	4	5						1	2	1	2	3	4	5	6	7
1	2	3	4	5	6	7	6	7	8	9	10	11	12	3	4	5	6	7	8	9	8	9	10	11	12	13	14
8	9	10	11	12	13	14	13	14	15	16	17	18	19	10	11	12	13	14	15	16	15	16	17	18	19	20	21
15	16	17	18	19	20	21	20	21	22	23	24	25	26	17	18	19	20	21	22	23	22	23	24	25	26	27	28
22	23	24	25	26	27	28	27	28	29	30	31			24	25	26	27	28	29	30	29	30	31				
29	30																										
January 2026							February 2026							March 2026							April 2026						
M	T	W	T	F	S	S	M	T	W	T	F	S	S	M	T	W	T	F	S	S	M	T	W	T	F	S	S
			1	2	3	4							1							1			1	2	3	4	5
5	6	7	8	9	10	11	2	3	4	5	6	7	8	2	3	4	5	6	7	8	6	7	8	9	10	11	12
12	13	14	15	16	17	18	9	10	11	12	13	14	15	9	10	11	12	13	14	15	13	14	15	16	17	18	19
19	20	21	22	23	24	25	16	17	18	19	20	21	22	16	17	18	19	20	21	22	20	21	22	23	24	25	26
26	27	28	29	30	31		23	24	25	26	27	28		23	24	25	26	27	28	29	27	28	29	30			
														30	31												
May 2026							June 2026							July 2026							August 2026						
M	T	W	T	F	S	S	M	T	W	T	F	S	S	M	T	W	T	F	S	S	M	T	W	T	F	S	S
				1	2	3	1	2	3	4	5	6	7			1	2	3	4	5						1	2
4	5	6	7	8	9	10	8	9	10	11	12	13	14	6	7	8	9	10	11	12	3	4	5	6	7	8	9
11	12	13	14	15	16	17	15	16	17	18	19	20	21	13	14	15	16	17	18	19	10	11	12	13	14	15	16
18	19	20	21	22	23	24	22	23	24	25	26	27	28	20	21	22	23	24	25	26	17	18	19	20	21	22	23
25	26	27	28	29	30	31	29	30						27	28	29	30	31			24	25	26	27	28	29	30
																					31						



= Schooldays



= School holidays



= Bank holidays



= Weekends



= Non pupil day

In addition, schools allocate five non-pupil days out of the school days indicated,
or the equivalent in disaggregated twilight sessions.

Autumn Term:	Monday 1 September 2025 – Friday 19 December 2025	75 days
	Half Term 27 October – 31 October	
Spring Term:	Monday 5 January 2026 – Friday 27 March 2026	55 days
	HalfTerm16February - 20February	
Summer Term:	Monday 13 April 2026 – Monday 20 July 2026	65 days
	HalfTerm25May–29May,andMayBankHoliday - 4 May	195 days