

Woodend Farm School Newsletter - September 2023

WELCOME BACK!

We hope you enjoyed a lovely summer break! The new Autumn term is well underway, and it has been so wonderful seeing the children enjoying each other's company again.

The theme for this half-term is 'Teamwork'. All classes will be focusing on building relationships with their peers and also Woodend Farm School staff. Through games and project work we will find opportunities to learn about working together collaboratively. Our PSHE and Thrive lessons will also cover Teamwork.

I hope you enjoy the first edition of our newsletter. In it you will find lots of information about the school, but if you have any questions or queries please do not hesitate to contact me at the school on 01376 790202.

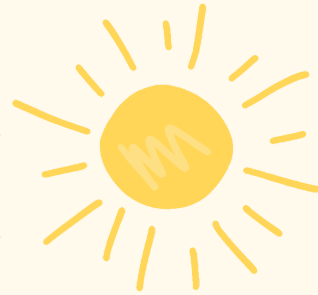
Mrs Overland
Head of School



New School Staff

This term we welcome the following new members of staff to our team:

- Mr Cleary, who will be teaching in Oak Room
- Mrs Allen, Pastoral and Safeguarding
- Mrs Innes,
• Catering Manager
- Miss Haynes,
• Learning Facilitator
- Miss Quantrill,
• Learning Facilitator
- Miss Bowyer,
• Learning Facilitator



We are delighted to welcome all our new staff to Woodend Farm School, and we wish you all the best in your new positions.

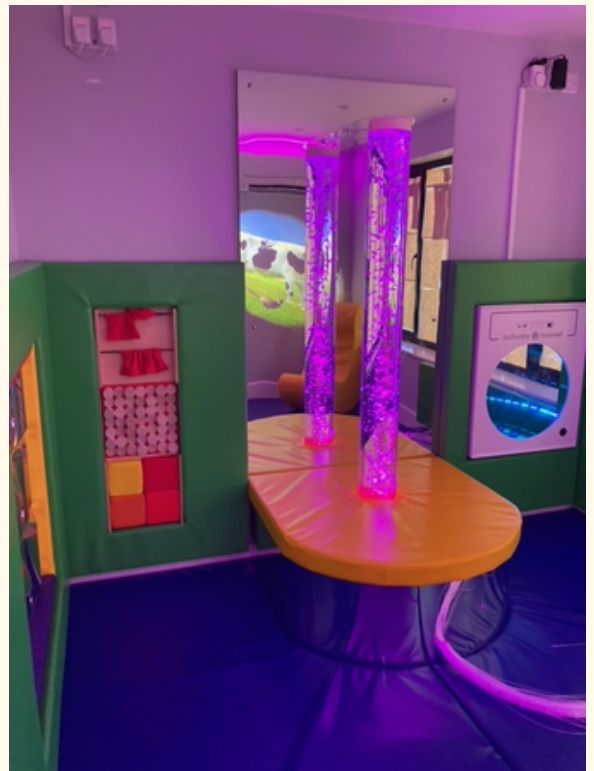
We have a lovely new bench for the children to relax on, in our front courtyard area, with our school motto on.



Brand New Sensory Rooms!

We are delighted to officially open our fantastic sensory and movement rooms - brand new for September 2023!

Items in each room calm, stimulate and engage our pupils and we have had a wonderful response from them all 😊



Parent's Evening

We will be holding our parents' evenings the week commencing Monday, 31st October. Appointments will be held across the week.

Staff will contact you soon to confirm individual appointment dates. We will also ask what option is best for you - holding your appointment here at the school, us coming to your home, having an online video call or us calling you on the phone.

We look forward to telling you all about what your child has been up to this half term and we will be happy to answer any questions you may have.

PE Kits

Please could you ensure your children have the correct PE kit with them each day they attend school.



We have a lovely outside area to enjoy and we're still lucky with the weather at the moment so we need to make sure children have everything they need to enjoy their PE lessons.

Thank you.



Parent contact details

In order to keep in touch with parents and to contact you quickly if needed, we need to make sure we have the correct phone numbers, email addresses and home addresses for our pupils.

Please let us know if any of your contact details have changed and we will update them.

Thank you!

Daily Pupil Updates

We enjoy updating you via our daily phone calls about your child's day at Woodend Farm School.

The school days can be very busy and although we can't always guarantee an exact time to call, we will call by the end of the day.





Jeans for Jeans Day

In recognition of Jeans for Genes week we are inviting the children to wear Jeans to school on Friday 22nd September 2023.

We are not collecting donations but if you wish to contribute, please visit www.justgiving/jeansforgenes

Trying something new!

We have been encouraging the children to try new fruit and vegetables at lunchtime. Everyone has been Keen to engage in the activity by either bravely trying something new, describing the taste and texture or asking questions and sharing their opinions.

A massive well done to everyone for taking part and discovering more things they like or dislike. We will continue to encourage children to be curious by offering some more options and look forward seeing some of the children overcome anxiety or nervousness around new choices and trying new things.

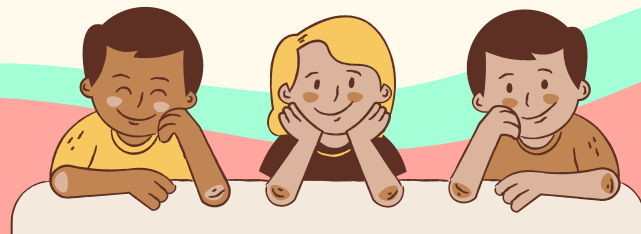
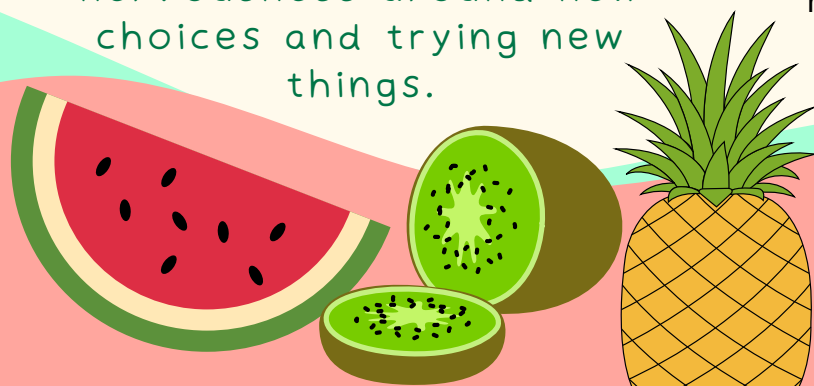
A message from Mrs Allen, Safeguarding and Pastoral Lead

I would like to say a big thank you to all the children, parents and carers that have welcomed me to Woodend Farm School.

It has been a pleasure to meet and spend time with the children. It was lovely to see the pupils from last year excited to return to school and the new students embrace their new environment and settling very quickly.

Everyone has shown a positive attitude towards school and their learning which is a wonderful start to the new academic year. I look forward to getting to know and working with parents and carers of all our children.

In the interim, if you have any concerns or questions regarding support or access to resources, please do not hesitate to contact me and I shall endeavour to assist you.



Attendance Procedure Awareness - IMPORTANT

Children are required to attend school for a minimum of 96% in an academic year. If your child's attendance falls below this figure they will be classed as a persistent absentee and you will receive correspondence from school making you aware of this. If attendance does not improve parent and carers will be invited to an attendance meeting to discuss ways the school can support families to help increase attendance.

Ten unauthorised absences in a ten week period (one whole week or five sporadic days) will result in a referral to the Local Authority and you may be prosecuted in the Magistrates Court under section 444 of the Education Act 1996 for failing to ensure regular attendance at school. However, depending upon the circumstances, you may be provided with an opportunity to discharge the offence by paying a penalty notice which imposes a fine of £60 if paid within 21 days, rising to £120 if paid between 22 days and 28 days. Should you fail to pay within the prescribed timescales, you will be prosecuted for the original offence.

Please note: If you have previously been the subject of a prosecution for any child in relation to irregular school attendance and improvements are not to a satisfactory level immediately, you may be required to attend a formal pre-court interview. This interview will be carried out under caution to investigate the circumstances.

When deciding upon the most appropriate action, the Local Authority has a duty to consider if the making of an Education Supervision Order would be appropriate. If an assessment of the situation indicates that this may be appropriate, and no improvement is achieved, you may be invited to a pupil planning meeting.

Parents and carers are required to provide evidence of medical or dental appointments. This maybe a screen shot of your child's appointment confirmation or a copy of a medical letter or appointment card. If evidence is not provided the absence will be marked as unauthorised.

The school does not authorise leave of absence but will consider exceptional circumstances. We ask that leave of absence is applied for to ensure the correct produces are followed and prevents a safeguarding enquiry and possibly a penalty notice. The school will respond to your application in writing within five days or three days should the leave be within a week period. If you have any concerns or would like advice, please do not hesitate to contact the school and we will we be happy to discuss this with you.

