

LOUISIANA

ECONOMIC RECOVERY

TASKFORCE

WWW.LAERTASKFORCE.COM

INFO@LAERTASKFORCE.COM



2020 Regular Legislative Session

2020 Regular Legislative Session

- Key Dates (Timeline)
 - Convened on Monday, March 9, 2020
 - Recessed on Monday, March 16, 2020
 - Reconvened on Tuesday, March 31, 2020
 - Recessed on Tuesday, March 31, 2020 (last day to introduce bills)
 - Reconvenes on (TBD), 2020
 - Adjourns on Monday, June 1, 2020

Subject Matter (Non-fiscal Regular Session)

- No measure levying or authorizing a new tax by the state or by any statewide political subdivision whose boundaries are coterminous with the state; increasing an existing tax by the state or by any statewide political subdivision whose boundaries are coterminous with the state; or legislating with regard to tax exemptions, exclusions, deductions or credits shall be introduced or enacted during a regular session held in an even-numbered year (Const. Art. III, § 2(A)(3)(a)).



COVID-19 Related Legislation

Healthcare

Bill No.	Author	Description
HB 324	Echols	Sets standards for Medicaid reimbursement rates for primary care services
HB 449	Echols	Provides relative to behavioral health services delivered via telehealth
HB 530	Echols	Provides for coverage of healthcare services provided through telehealth or telemedicine
HB 553	Crews	Provides relative to remote patient monitoring
HB 745	Villio	Provides for limited liability for medical services rendered during a state of emergency
HB 806	Echols	Prohibits the restraint of the practice of medicine in contracts or agreements
SB 170	Mills	Provides relative to health care emergency visit alternative treatment reimbursement.
SB 464	Peacock	Provides relative to the practice of medicine.
SB 449	Boudreaux	Requires reporting of contagious or infectious diseases to first responders.

Tax & Fiscal

Bill No.	Author	Description
HB 833 SB 461	Frieman Reese	Provides with respect to unemployment insurance benefits
HCR 34	DeVillier	Suspends the severance taxes levied on oil, natural gas, distillate, and condensate
HCR 40	Wright	Directs the Dept. of Revenue to develop data on the projected impact the COVID-19 pandemic will have on Louisiana business revenue in 2020 and on net operating loss carry forward tax deductions for future tax filings
HCR 43	Edmonds	Suspends the corporation franchise tax levied on domestic and foreign corporations and the initial tax levied on certain business entities subject to the corporation franchise tax
SB 498	Allain	Provides for tax filing and payment extensions.
SB 503 SCR 28	White	Suspends deadline for withdrawing appropriations from preceding fiscal year from state treasury.
SCR 26	Hewitt	Suspends corporate franchise tax for the 2021 tax year.

Legal Liability

Bill No.	Author	Description
HB 745	Villio	Provides for limited liability for medical services rendered during a state of emergency
HB 759	Marino	Provides for the suspension of certain time periods, limitations, and delays in declared states of disaster or emergency
HB 778	Villio	Provides for the limitation of liability during a declaration of a state of public health emergency
HB 826	Pressly	Provides relative to the limitations of liability due to the COVID-19 public health emergency
HB 856	Edmonds	Provides relative to limitations of liability in response to the COVID-19 state of emergency
SB 435	Abraham/Foil	Provides relative to certain immunity from civil liability during state of emergencies.
SB 445	Peacock	Provides relative to limitation of civil liability for medical personnel and healthcare providers during public health emergency.
SB 489	McMath	Provides relative to limitation of liability of governmental entities which require its employees to work during a declared state of emergency.
SB 491	Hewitt	Limits liability of persons who provide relief or recovery equipment or services during a declared state emergency.
SB 508	McMath	Limits liability for restaurants that provide food-to-go during a state declared emergency.

Small Business

Bill No.	Author	Description
HB 763	McFarland	Provides relative to a gubernatorial declaration of an abnormal economic disruption
HB 798	Dwight	Authorizes public bodies to allow members to participate and vote electronically during certain states of emergency subject to certain conditions
HB 868	Ivey	Provides relative to the continuity of the legislature in times of emergency or disaster
HR 20	Edmonds	Urges and requests Attorney General Jeff Landry to ensure a swift, effective, and unified response to price gouging
SB 466	Hewitt	Provides for teleconferencing of public bodies under certain circumstances
SB 468	Morris	Provides relative to the regulation of financial institutions during a declared emergency.
SB 469	Johns	Provides relative to professional and occupational licensing boards and commissions during declared emergencies.
SB 497	Barrow	Allows a voter to request his absentee by mail ballot be rescinded in the event an election is delayed as a result of a declared state of emergency.
SB 499	Connick	Provides relative to the regulation of business entities during a public health emergency
SB 500	Connick	Provides relative to state agencies during a declared emergency.
SB 512	Boudreaux	Provides for the use and exemptions applicable to payments, grants, and loans made by governmental entities to persons resulting from the occurrence of an extraordinary emergency event.
SCR 32	Hewitt	Suspends legal requirements to ensure the continued operation of local government

Update on Economy & Unemployment Trends

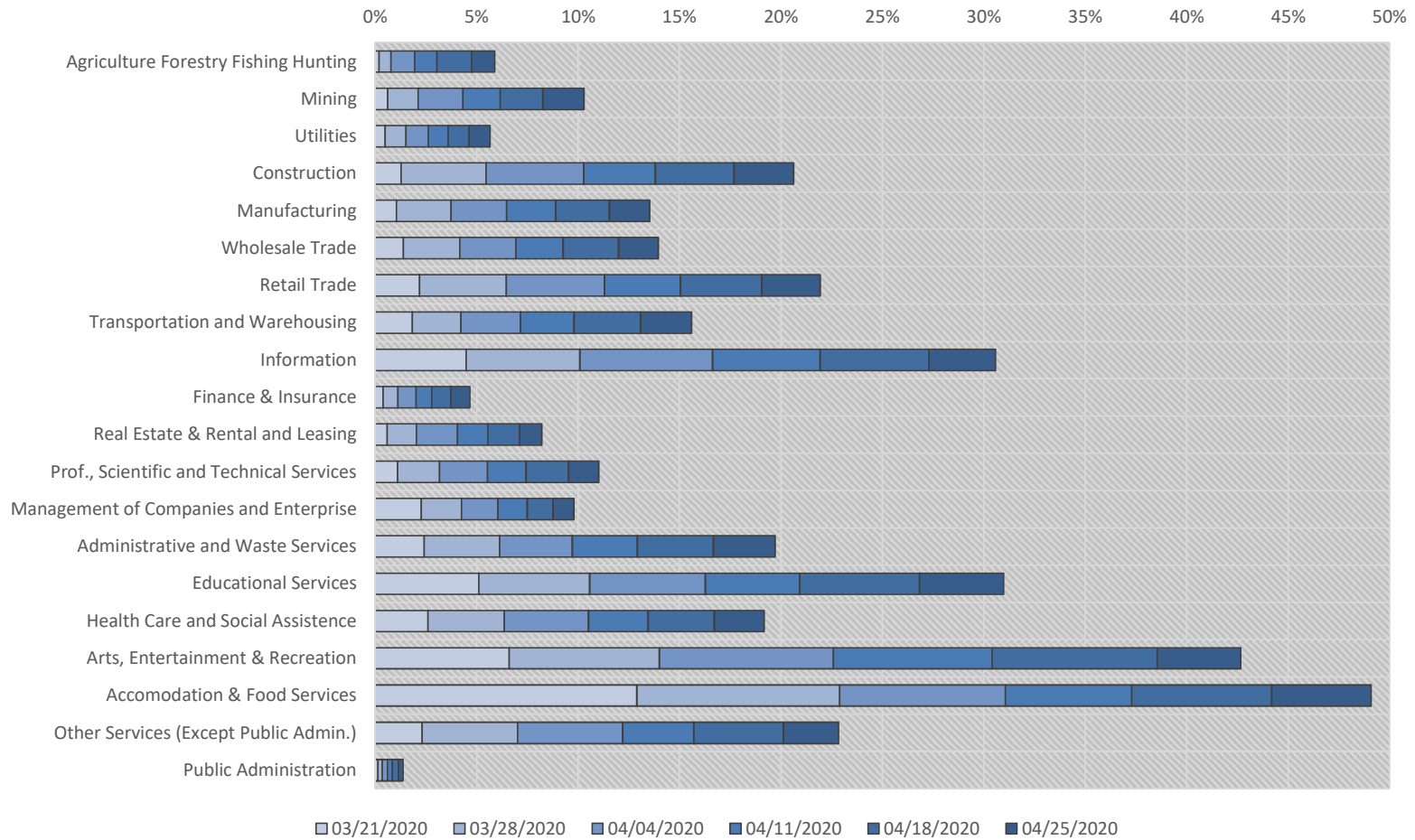
Stephen R. Barnes, PhD
Blanco Public Policy Center Director
Associate Professor of Economics



UNIVERSITY of
LOUISIANA
L A F A Y E T T E ®

Kathleen Babineaux Blanco
Public Policy Center

Initial UI Claims as Percent of 2019 Employment by Week



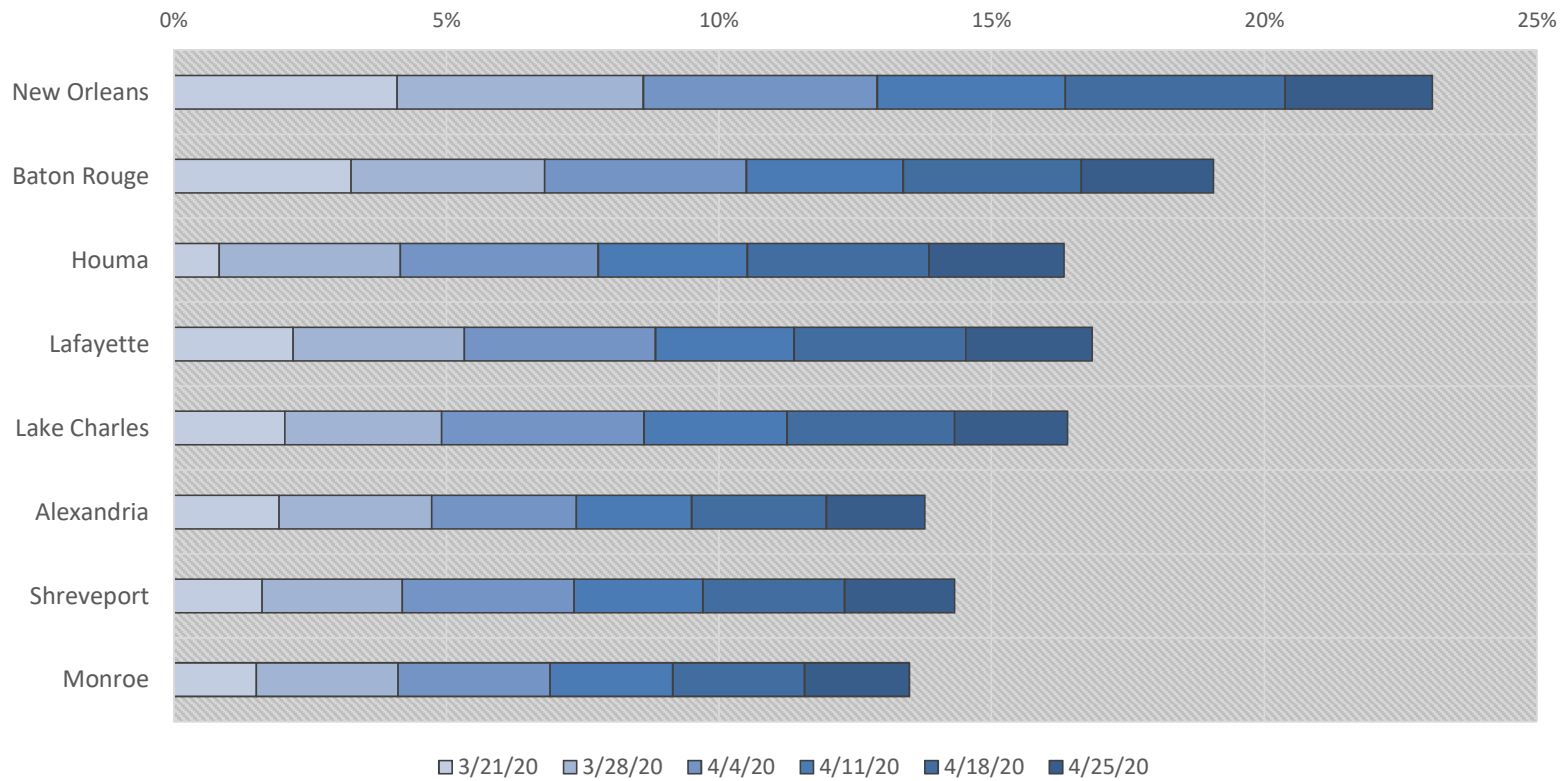
Sources: LWC UI Claims; BEA 2018 Employment



UNIVERSITY of
LOUISIANA
LAFAYETTE

Kathleen Babineaux Blanco
Public Policy Center

Weekly Initial UI Claims by Region as Percent of Pre-COVID Employment

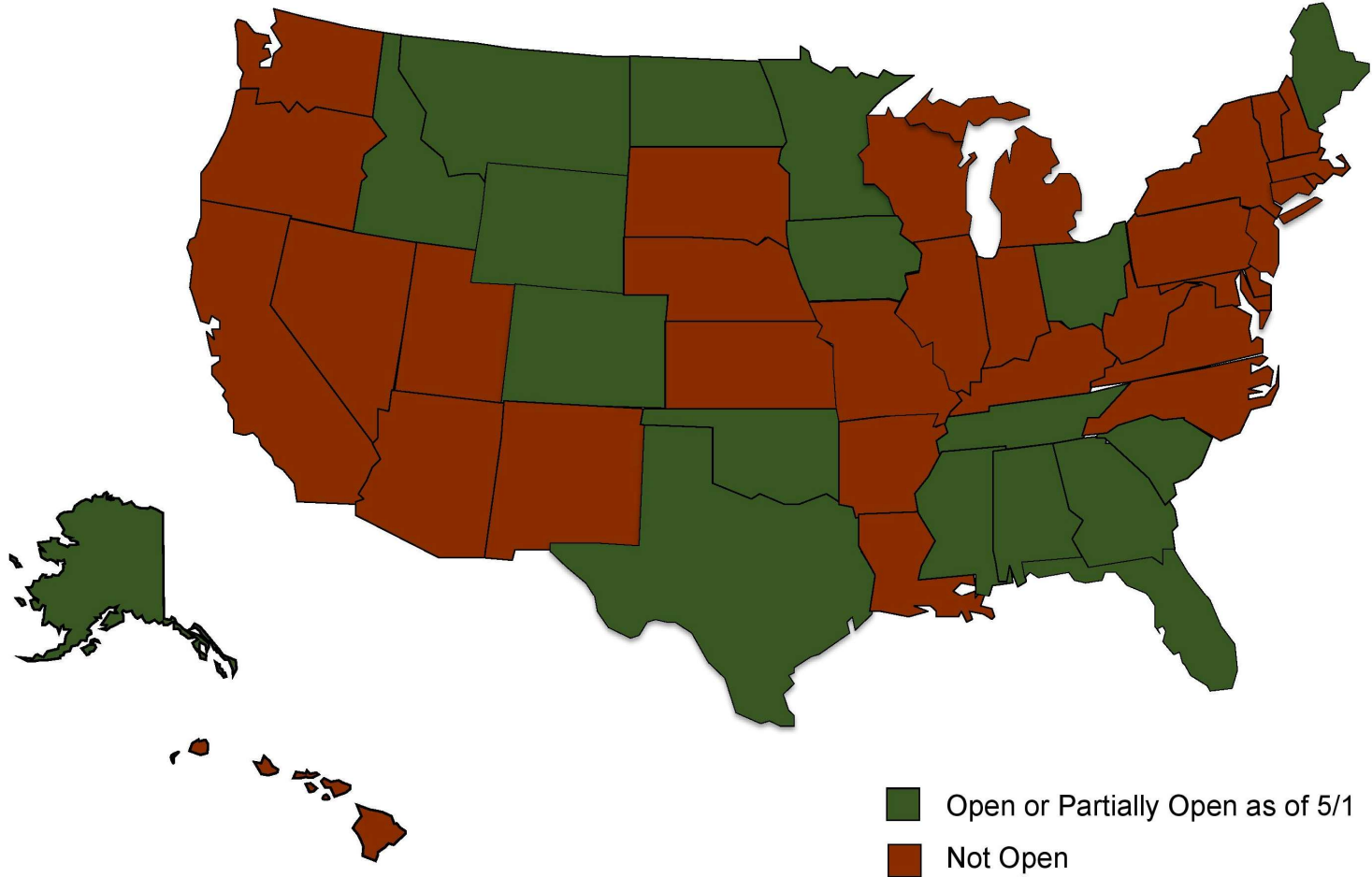


Sources: LWC UI Claims; BEA 2018 Employment



UNIVERSITY of
LOUISIANA
L A F A Y E T T E

Kathleen Babineaux Blanco
Public Policy Center





1. Ensuring Public Health and Safety at Work

Weekly Presentation to Task Force

Chair: Dr. Craig Greene

Membership: Scott Ballard, Jeff Drozda, David Ellis, Friday Ellis, John Finan, Stan Harris, Quentin Messer, Pete November, Dr. Catherine O'Neal, Allyson Pharr, Doug Shipley

Special Advisor: Beverly Haydel

Initial Proposals

1. Provide guidance and information, not rules and mandates, to businesses as they work to re-open.

Look to industry specific professional association best practices and guidelines on PPE, social distancing, and physical space adaptations

2. No unfunded mandates

Businesses, especially small ones, may have trouble accessing or paying for PPE, changes to physical spaces, new technology, etc.

Initial Proposals

3. Support coordinated testing, tracing and tracking.

- Support hospitals and providers as they work to increase testing, including through enhanced funding.
- Leverage public-private partnerships to create a robust contact tracing system to minimize spread.
- Work with healthcare systems and private-sector companies to establish a coordinated tracking system to quickly identify trends and assist employers in identifying who may be potentially immune.
- Launch an information campaign to foster a sense of psychological safety for employers and consumers .

4. Protect employers and healthcare providers from frivolous COVID-related liability.

Businesses that adhere to certain minimum requirements or professional association guidelines should be protected

Initial Proposals

5. Roll back the red tape.

- Build on emergency measures to permanently roll back red tape and ease regulatory requirements on businesses.
- Healthcare examples include quicker processes for hiring/credentialing employees, quicker authorizations from payors, and increased flexibility for patient transfers and home care options.

6. Encourage the use of in-state businesses for COVID response.

Leverage existing infrastructure, human capital and expertise for equipment, supplies and testing materials.

Initial Proposals

7. Increase access to care.

- *Permanent expansion of telemedicine.*
- *Temporary postponement of certain medical education requirements to allow students to more quickly provide patient care.*



2. Promoting Jobs and Opportunity for Louisiana

Weekly Presentation to Task Force

Chair: Nathalie Simon

Membership: Dr. Stephen Barnes, Tommy Faucheux, Cody Gielen, Vic Lafont, Nanette Noland, Deborah Randolph, Erich Schouest, George Swift

Special Advisor: Jim Bourgeois

Promoting Jobs and Opportunity for Louisiana



1. Analyze positions and industries with job losses and those with potential growth opportunities
2. Explore the impact of extended unemployment benefits on the ability to re-hire workers
3. Address other external challenges to getting people back to work, including the availability of childcare (including schools) and transportation
4. Promote job creation through new or revamped public incentives or programs
5. Consider how to scale up worker training or re-skill workers to meet changing market demand in the short and long term
6. Report on available federal and state education and workforce funding with recommendations on how to improve the outcomes of education and job training to better connect to the job market

Analysis of positions & industries w/ job losses and those w/ growth opportunities

- Industries most impacted:
 - Art, entertainment, and recreation – ↓72%
 - Accommodation and food services – ↓49%
 - Information – ↓37%
 - Education services – ↓32%
 - Professional services – ↓15%
 - Mining – ↓14%
 - Management of companies – ↓10%
 - Finance and insurance – ↓6%
- Need to identify growth opportunities

Impact of extended unemployment benefits on the ability to re-hire workers

- Enhanced unemployment benefits causing concern in rehiring process
 - Unemployed insurance benefit amount
 - Initial Proposals:
 - Recommendations to employers on re-hiring process
 - PR campaign to articulate short- and long-term concerns of prolonged unemployment
 - Action to preserve the unemployment insurance trust fund

Other external challenges to getting people back to work

- Childcare
 - COVID presenting significant childcare challenges when the stay at home order is lifted
- Broadband Access
 - COVID confirms the importance of broadband access, especially in rural areas



3. Supporting Diverse Industries Across the Louisiana Economy to Grow and Prosper

Weekly Presentation to Task Force

Chair: Stephen Waguespack

Membership: Jim Bernhard, Chett Chaisson, Blake Chatelain, Hank Danos, Lavelle Edmonson, Meryl Kennedy Farr, Adam Knapp, Scott Martinez, Matt McKay, Richard Neal, Dave Roberts, Ruffin Rodrigue

Special Advisor: Ileana Ledet

Policy Goals

- 1.) Jumpstart Commerce
- 2.) Generate Savings & Increase Competitiveness
- 3.) Increase Ease of Doing Business
- 4.) Generate Revenue

Jumpstart Commerce

Proposal	Section of Law	Stakeholders	Impact
NOL Carryback	Tax	Businesses	Business relief; enhance competitiveness
Franchise Tax	Tax	Businesses	Business relief; enhance La. competitiveness
Sales Tax Holiday	Tax	Retailers, consumers	Incentivizing consumers
GOHSEP PPE Supply	State Agencies	Citizens, businesses	Consumer confidence

Generate Savings & Increase Competitiveness

Proposal	Section of Law	Stakeholders	Impact
Liability Reform*	Liability	COVID-19, auto insurance, energy industry	Businesses reopen and operate with confidence
Licensing Reform	Licensing	Workforce	Easing of regulatory burdens
Infrastructure – Investments; Additional Bonding Authority; PPPs	Infrastructure	Residents, businesses	Job growth, improved transport for all

*Businesses making a good faith effort to comply with guidelines and regulations would not be liable for COVID-related personal injury claims; Anyone who manufactures PPE not liable (exceptions for gross negligence)

Increase Ease of Doing Business

Proposal	Section of Law	Stakeholders	Impact
Centralized Sales Tax	Tax	Local governments, businesses	Loosen regulatory environment, spur economic growth
Eliminate Federal Deductibility	Tax	Taxpayers	Aligns La. with other states
ITEP Changes	Tax	Manufacturers, local governments	Business relief; enhance competitiveness

Generate Revenue

Proposal	Section of Law	Stakeholders	Impact
Sports betting	Gambling	State, local governments	New revenue source
Online gaming	Gambling	State, local governments	New revenue Source

Further Exploration...

- Stimulate capital investment over next 18 months (e.g. GOZONE at state level)

Example: Develop program for a tax credit that draws down private sector dollars that are invested in the community - without immediate costs to the state



4. Removing Obstacles to Incentivize Job Creation and Economic Growth

Weekly Presentation to Task Force

Chair: Scott Poole

Membership: Greg Bowser, Gifford Briggs, Jeff Copeskey, David Cresson, Bryan Hanks, Ray Lasseigne, Chris Leopold, Jude Melville, Chris Schouest, Dawn Starns

Special Advisor: Barker Dirmann

Initial Proposals

1. Minimize the potential liability for businesses as they seek to re-open under new guidelines and regulations.

Businesses that adopt and substantially adhere to published state guidelines for employee and customer safety, specific to their industry, should be granted expanded protection from legal liability.

2. Identify and correct current policies and regulations that are inhibiting economic recovery

Current policies and regulations related to the state's economic shutdown, legal climate, tax structure and the low price of oil and gas must be addressed to create an economic climate that will promote, not hinder, economic recovery.

Initial Proposals

3. Work to streamline licensing requirements, paperwork, and unnecessary regulations for general operations and the creation of new businesses.

Develop solutions to regulatory, logistical and access to capital impediments that often serve as major barriers to the successful creation of new businesses and entrepreneurship.

4. Consider changes to occupational licensing laws that will ease the cost and burden of getting back to work

Support legislation, like SB 469, that would limit punitive or disciplinary action against licensees for the failure to comply with a regulatory action during this time of economic crisis.

Initial Proposals

5. Suggest ways for local government to ease regulatory and licensing burden

- Recommend the immediate suspension of any performance requirements tied to the receipt/award of a business tax incentive or abatement as they relate to local government entities.
- Relax building code requirements so that businesses seeking to invest money in capital improvements are not overly burdened by unnecessary regulations built into local building permits and codes.



5. Encouraging Long-Term Economic Growth

Weekly Presentation to Task Force

Chair: Maura Donahue

Membership: Stephanie Calhoun, Art Favre, Kelisha Garrett, Tyler Gray, Steven Grissom, Michael Hecht, Todd Murphy, Art Price, Dr. Loren Scott, Craig Spohn, Dennis Stine

Special Advisor: Camille Conaway

Major Issues Areas to Explore for Long-Term Economic Growth

1. Tax Relief and Fiscal Policy
2. Legal and Regulatory Structure
3. Governmental Reforms
4. A Modern Economy

Infrastructure Report

Louisiana AGC



Construction Employment Changes

Louisiana			March 2019	March 2020	% change
	Statewide	Construction	14,800	13,910	-6%
	Statewide	Mining, Logging, and Construction	18,470	17,470	-5%
	Baton Rouge, LA	Construction	54,700	52,700	-4%
	Houma-Thibodaux, LA	Construction	4,700	4,900	4%
	Lafayette, LA	Construction	9,000	9,200	2%
	Lake Charles, LA	Construction	25,400	20,800	-18%
	New Orleans-Metairie, LA	Construction	29,300	26,500	-10%
	Shreveport-Bossier City, LA	Construction	7,700	7,600	-1%



Safety Is Paramount

DOT
LOUISIANA DEPARTMENT OF
TRANSPORTATION & DEVELOPMENT

Office of Engineering
PO Box 94345 | Baton Rouge, LA 70804-9435
ph: 225-237-9000 | fx: 225-279-9000

John Bel Edwards, Governor
Shawn D. Wilson, Ph.D., Secretary

March 20, 2020

To: LADOTD Project Engineers
LADOTD District Administrators
LADOTD Construction Contractors
Louisiana Associated General Contractors (AGC)
Louisiana Asphalt Pavement Association (LAPA)
Concrete & Aggregates Association of Louisiana (CAAL)

From: Mike Vosburg, PE, Director of Construction and Materials *MV*

Subject: LADOTD Operations due to COVID-19 (Coronavirus)

The Louisiana Department of Transportation and Development ("LADOTD") is monitoring the COVID-19 virus situation. LADOTD encourages all contractors, consultants, and employees to stay informed of the directives and guidance issued by state and federal public health authorities, including the CDC and the Louisiana Department of Health. For more information about the virus, please visit the Louisiana Department of Health website at www.ldh.la.gov, the Centers for Disease Control and Prevention (CDC) website at www.cdc.gov, or by dialing 211 to contact the Louisiana 211 Network. You can also text LACOVID to 898-211 for current information about COVID-19.

At this time, all Contractors should proceed with the work on all LADOTD projects to the extent consistent with the public interest including the safety of all construction workers, consultants, and employees and the motoring public.

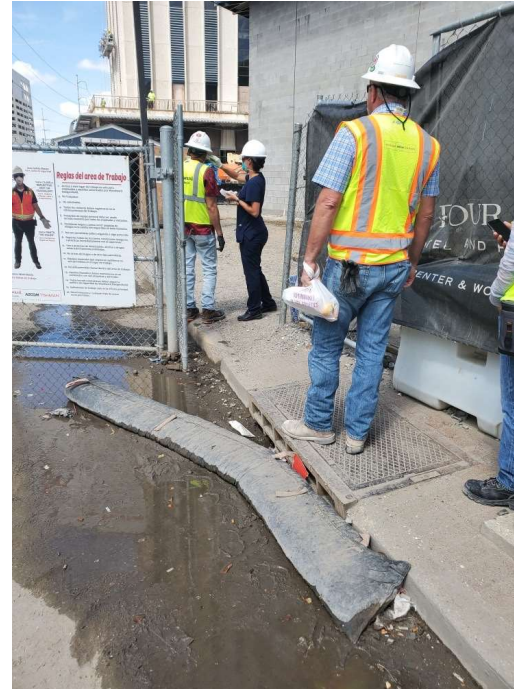
If you believe that the COVID-19 virus has impacted your work on any project, any claimed impact must be documented and all applications for adjustments must be in accordance with the requirements of the Contract. Any claims for impacts to any projects will be reviewed in accordance with the terms and provisions of the Contract, specifically including the Standard Specifications applicable to Excusable, Non-Compensable Delays, if warranted.

Additionally, to assist the LADOTD with monitoring any complete work stoppages, if you must engage in a complete work stoppage of any project due to impacts arising from the COVID-19 virus situation please provide the LADOTD Project Engineer with advanced written notice of: 1) the date of the work stoppage; 2) the reasons for the work stoppage; and, 3) the anticipated date of resumption of the work. In addition, you must also document any claim in accordance with the Contract, including the Standard Specifications. Further you must continue to maintain the project limits in accordance with Sections 105.15 and 107.19 of the Standard Specifications. Upon resuming any work on the Project, you must notify LADOTD in writing.

We will continue to monitor the COVID-19 virus situation and we appreciate your efforts to minimize any project impacts.

Louisiana Department of Transportation and Development | 1301 Capitol Access Road | Baton Rouge, LA 70802 | 225-279-1300
An Equal Opportunity Employer | A Drug-Free Workplace | Agency of Louisiana.gov | dotd.la.gov

Site Specific Safety Plans



Industry Partnerships



Workforce Survey

LAGC Surveyed our Membership to address current market conditions:

- Workforce has remained steady. An overwhelming majority have not seen any issues as it relates to their workforce



Common Concerns

- **Replacing Subs/Suppliers:**
 - Less than 20% of Contractors have had to replace subs/suppliers
- **Production Rate:**
 - 75% of contractors are reporting at or near the same production rates



Staffing An Infrastructure Package

- AGC Polled our Members and asked if they could support it from a staffing side:
 - 98% felt confident about staffing an infrastructure package



Upcoming Task Force Meeting Dates

- Task Force Meetings—Thursdays, 8:30 am
- Work Group Meetings—
Mondays and/or Tuesdays (TBD by Chair of
Work Groups)