



# STEELUPRO

**Prefabrik Konut Katalođu**

[www.steelupro.com](http://www.steelupro.com)

DÜNYANIN HER YERİNDE



STEELUPRO

Kalite

Sürdürülebilirlik

KALİTESİYLE

Planlama

Ekonomik

Güvenilirlik

Estetik-Tasarım



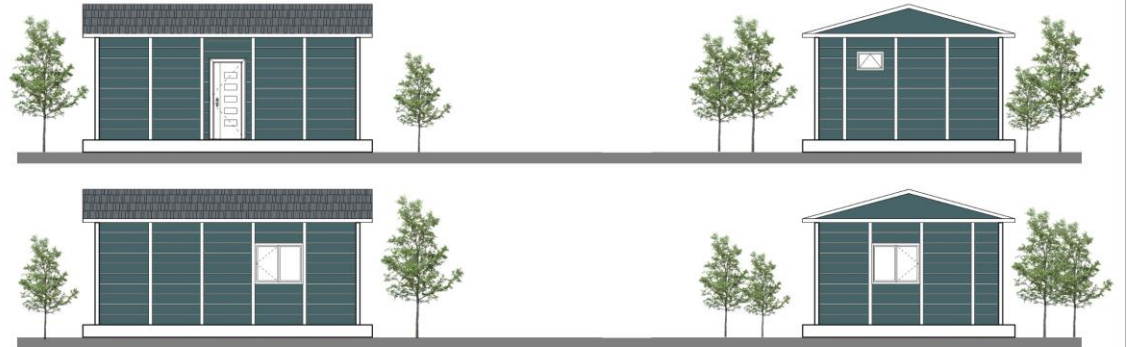
STEELUPRO



## KÜBA

Tek Katlı  
1+1 / 30 m<sup>2</sup>

Hol+Mutfak+Salon: 15 m<sup>2</sup>  
Yatak Odası: 10 m<sup>2</sup>  
Banyo: 5 m<sup>2</sup>





## ATINA

Tek Katlı  
1+1 / 47 m<sup>2</sup>

Hol: 5 m<sup>2</sup>  
Salon-Mutfak: 20.5 m<sup>2</sup>  
Yatak Odası: 10.5 m<sup>2</sup>  
Banyo: 5 m<sup>2</sup>  
Teras: 6 m<sup>2</sup>





## KIBRIS

Tek Katlı  
2+1 / 50 m<sup>2</sup>

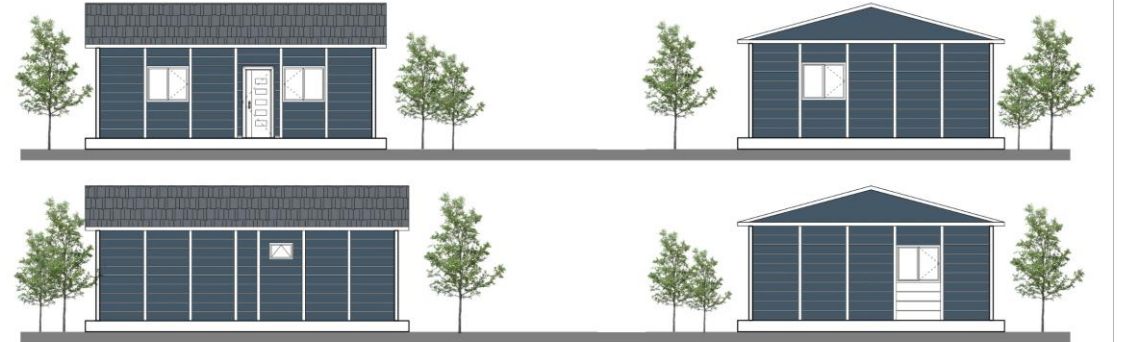
Hol+Salon: 19 m<sup>2</sup>

Mutfak: 8.5 m<sup>2</sup>

Yatak Odası: 10 m<sup>2</sup>

Çocuk Odası: 8.5 m<sup>2</sup>

Banyo: 4 m<sup>2</sup>



## PEKIN

Tek Katlı  
2+1 / 64 m<sup>2</sup>

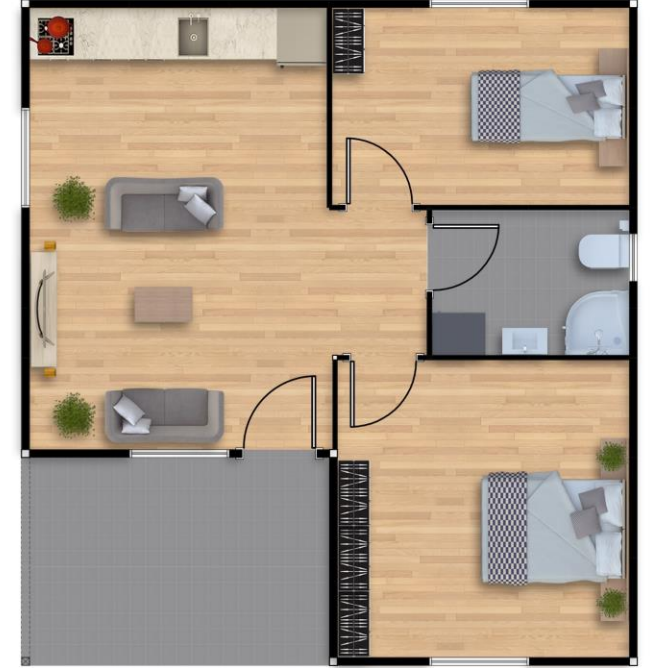
Hol+Salon+Mutfak: 14 m<sup>2</sup>

Yatak Odası: 15 m<sup>2</sup>

Çocuk Odası: 10 m<sup>2</sup>

Banyo: 5 m<sup>2</sup>

Teras: 10 m<sup>2</sup>



STEELUPRO

PEKIN

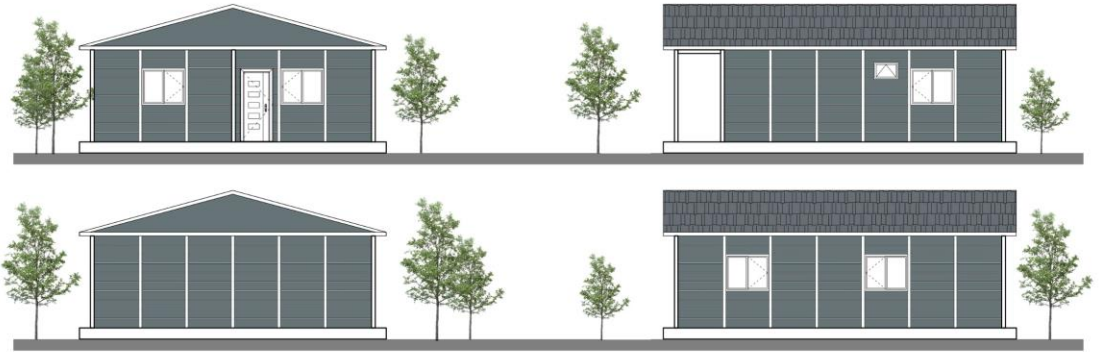
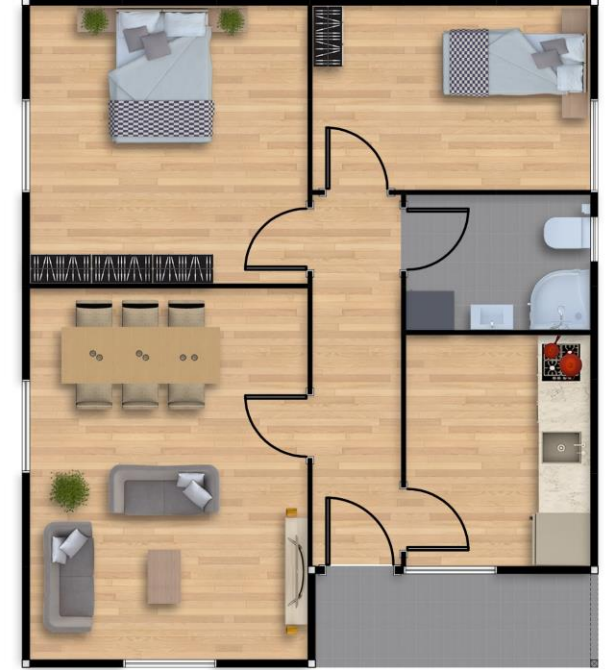
Pekin 64m<sup>2</sup> – Tek Katlı Prefabrik Bina



## VIYANA

Tek Katlı  
2+1 / 69 m<sup>2</sup>

Hol: 6.5 m<sup>2</sup>  
Salon: 20 m<sup>2</sup>  
Mutfak: 8 m<sup>2</sup>  
Yatak Odası: 15 m<sup>2</sup>  
Çocuk Odası: 10 m<sup>2</sup>  
Banyo: 5 m<sup>2</sup>  
Teras: 5 m<sup>2</sup>



Viyana 69m2 – Tek Katlı Prefabrik Bina



## ZÜRIH

Tek Katlı  
2+1 / 69 m<sup>2</sup>

Hol+Salon+Mutfak: 32 m<sup>2</sup>

Yatak Odası 1: 12.5 m<sup>2</sup>

Yatak Odası 2: 12.5 m<sup>2</sup>

Banyo: 5 m<sup>2</sup>

Teras: 7 m<sup>2</sup>



Zurih 69m<sup>2</sup> – Tek Katlı Prefabrik Bina

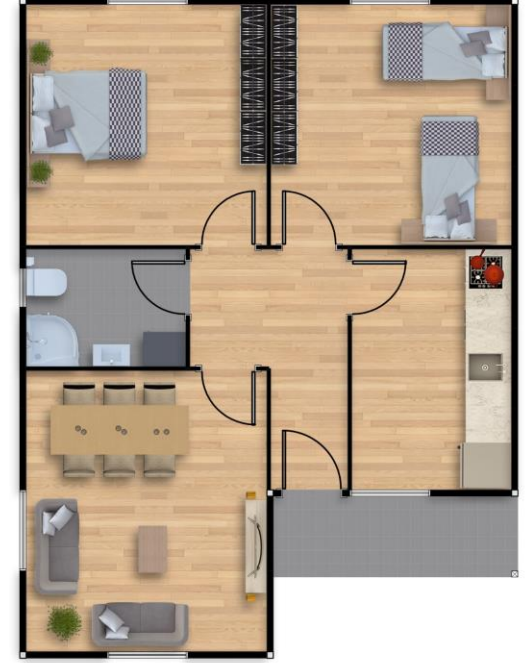




## TORONTO

Tek Katlı  
2+1 / 74 m<sup>2</sup>

Hol: 6 m<sup>2</sup>  
Salon: 18 m<sup>2</sup>  
Mutfak: 10 m<sup>2</sup>  
Yatak Odası: 15 m<sup>2</sup>  
Çocuk Odası: 15 m<sup>2</sup>  
Banyo: 5 m<sup>2</sup>  
Teras: 5 m<sup>2</sup>

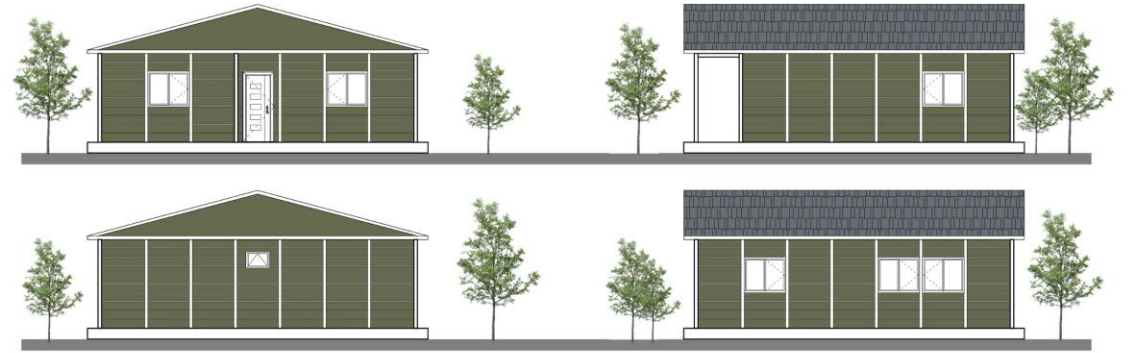




## BERLIN

Tek Katlı  
2+1 / 81 m<sup>2</sup>

Hol: 10 m<sup>2</sup>  
Salon: 20 m<sup>2</sup>  
Mutfak: 12.5 m<sup>2</sup>  
Yatak Odası: 15 m<sup>2</sup>  
Çocuk Odası: 12.5 m<sup>2</sup>  
Banyo: 5 m<sup>2</sup>  
Teras: 6 m<sup>2</sup>



Berlin 81m<sup>2</sup> – Tek Katlı Prefabrik Bina



## TOKYO

Tek Katlı  
3+1 / 81 m<sup>2</sup>

Hol: 12 m<sup>2</sup>  
Salon: 26 m<sup>2</sup>  
Mutfak: 14 m<sup>2</sup>  
Yatak Odası 1: 15 m<sup>2</sup>  
Yatak Odası 2: 15 m<sup>2</sup>  
Çocuk Odası: 12 m<sup>2</sup>  
Banyo: 5 m<sup>2</sup>  
WC: 3 m<sup>2</sup>  
Teras: 23 m<sup>2</sup>



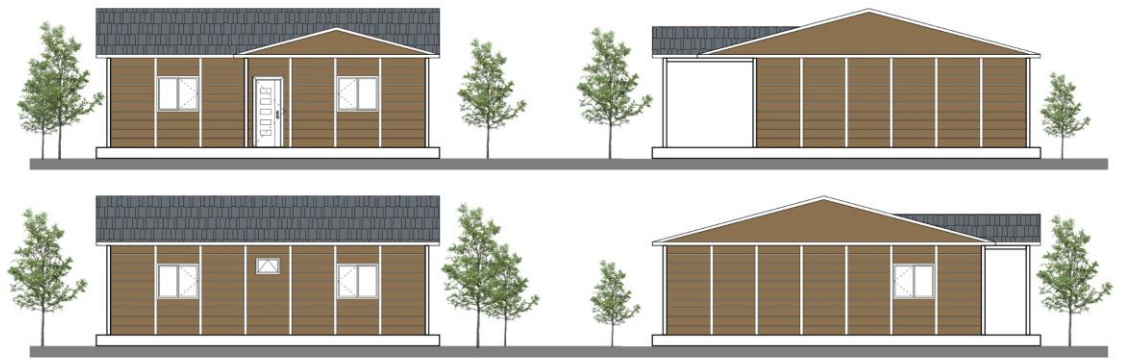
Tokyo 81m2 – Tek Katlı Prefabrik Bina



## TEKSAS

Tek Katlı  
2+1 / 87 m<sup>2</sup>

Hol: 13 m<sup>2</sup>  
Salon: 20 m<sup>2</sup>  
Mutfak: 10 m<sup>2</sup>  
Yatak Odası: 15 m<sup>2</sup>  
Çocuk Odası: 10 m<sup>2</sup>  
Banyo: 6 m<sup>2</sup>  
Teras: 13 m<sup>2</sup>



Teksas 87m2 – Tek Katlı Prefabrik Bina



## HAVANA

Tek Katlı  
2+1 / 92 m<sup>2</sup>

Hol: 8 m<sup>2</sup>  
Salon: 25 m<sup>2</sup>  
Mutfak: 9.5 m<sup>2</sup>  
Yatak Odası: 15 m<sup>2</sup>  
Çocuk Odası: 13.5 m<sup>2</sup>  
Banyo: 5 m<sup>2</sup>  
Teras: 16 m<sup>2</sup>

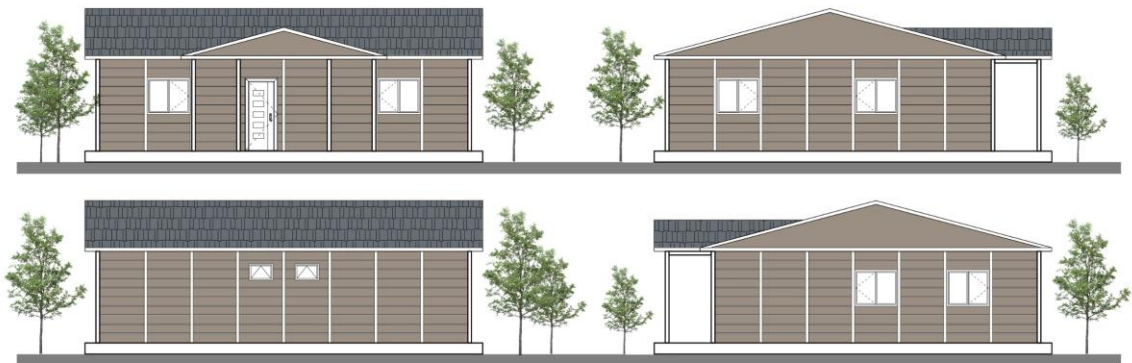




## MOSKOVA

Tek Katlı  
3+1 / 98 m<sup>2</sup>

Hol: 14 m<sup>2</sup>  
Salon: 20 m<sup>2</sup>  
Mutfak: 10 m<sup>2</sup>  
Yatak Odası 1: 15 m<sup>2</sup>  
Yatak Odası 2: 13.5 m<sup>2</sup>  
Çocuk Odası: 10 m<sup>2</sup>  
Banyo: 5 m<sup>2</sup>  
WC: 3 m<sup>2</sup>  
Teras: 8 m<sup>2</sup>



Moskova 98m<sup>2</sup> – Tek Katlı Prefabrik Bina



## MOSKOVA

Tek Katlı  
3+1 / 98 m<sup>2</sup>

Hol: 14 m<sup>2</sup>  
Salon: 20 m<sup>2</sup>  
Mutfak: 10 m<sup>2</sup>  
Yatak Odası 1: 15 m<sup>2</sup>  
Yatak Odası 2: 13.5 m<sup>2</sup>  
Çocuk Odası: 10 m<sup>2</sup>  
Banyo: 5 m<sup>2</sup>  
WC: 3 m<sup>2</sup>  
Teras: 8 m<sup>2</sup>

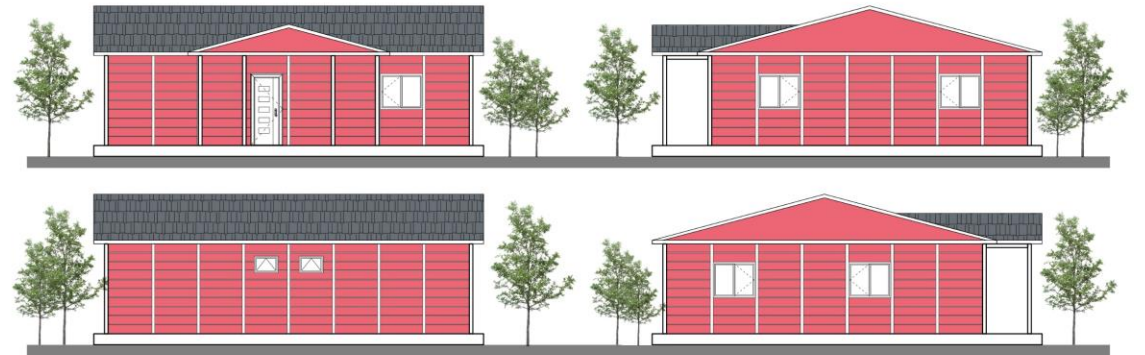
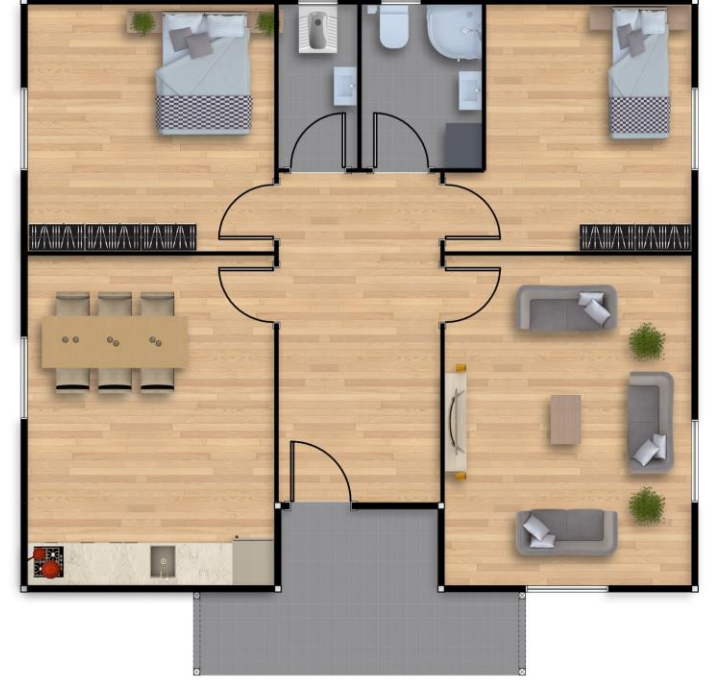




## MILANO

Tek Katlı  
2+1 / 98 m<sup>2</sup>

Hol: 12 m<sup>2</sup>  
Salon: 20 m<sup>2</sup>  
Mutfak: 20 m<sup>2</sup>  
Yatak Odası: 15 m<sup>2</sup>  
Çocuk Odası: 13 m<sup>2</sup>  
Banyo: 5 m<sup>2</sup>  
WC: 3 m<sup>2</sup>  
Teras: 10 m<sup>2</sup>







## KUDÜS

İki Katlı  
2+1 / 89 m<sup>2</sup>

Zemin Kat /  
Salon+Mutfak+Hol: 30 m<sup>2</sup>  
WC: 3 m<sup>2</sup>  
Veranda: 3.5 m<sup>2</sup>

1.Kat /  
Hol: 5.5 m<sup>2</sup>  
Yatak Odası: 12.5 m<sup>2</sup>  
Çocuk Odası: 10 m<sup>2</sup>  
Banyo: 5 m<sup>2</sup>  
Balkon: 3.5 m<sup>2</sup>





STEELUPRO

ROMA



STEELUPRO

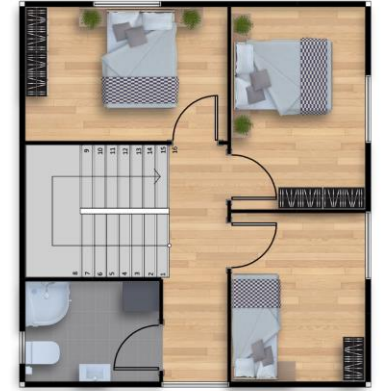
ROMA

## ROMA

İki Katlı  
3+1 / 92 m<sup>2</sup>

Zemin Kat /  
Hol: 5 m<sup>2</sup>  
Salon: 15 m<sup>2</sup>  
Mutfak: 10 m<sup>2</sup>  
Banyo: 5 m<sup>2</sup>  
WC: 10 m<sup>2</sup>

1.Kat /  
Hol: 5 m<sup>2</sup>  
Yatak Odası 1: 10 m<sup>2</sup>  
Yatak Odası 2: 10 m<sup>2</sup>  
Çocuk Odası: 8.5 m<sup>2</sup>  
Banyo: 5 m<sup>2</sup>





## ISTANBUL

İki Katlı  
2+1 / 100 m<sup>2</sup>

Zemin Kat /  
Salon+Mutfak+Hol: 31 m<sup>2</sup>  
Ön Veranda: 4 m<sup>2</sup>  
Arka Veranda: 6 m<sup>2</sup>  
WC: 2.5 m<sup>2</sup>

1.Kat /  
Hol: 8 m<sup>2</sup>  
Yatak Odası: 12 m<sup>2</sup>  
Çocuk Odası: 8 m<sup>2</sup>  
Banyo: 5 m<sup>2</sup>  
Balkon: 6 m<sup>2</sup>





## ALASKA

İki Katlı  
3+1 / 100 m<sup>2</sup>

Zemin Kat /  
Hol: 5 m<sup>2</sup>  
Salon: 25 m<sup>2</sup>  
Mutfak: 10 m<sup>2</sup>  
WC: 3 m<sup>2</sup>

1.Kat /  
Hol: 7 m<sup>2</sup>  
Yatak Odası 1: 10 m<sup>2</sup>  
Yatak Odası 2: 10 m<sup>2</sup>  
Çocuk Odası: 10 m<sup>2</sup>  
Banyo: 5 m<sup>2</sup>





STEELUPRO

KALIFORNIYA



STEELUPRO

KALIFORNIYA

## KALIFORNIYA

İki Katlı  
2+1 / 110 m<sup>2</sup>

Zemin Kat /  
Hol: 4 m<sup>2</sup>  
Salon: 20 m<sup>2</sup>  
Mutfak: 10 m<sup>2</sup>  
WC: 3.5 m<sup>2</sup>  
Veranda: 10 m<sup>2</sup>

1.Kat /  
Hol: 4 m<sup>2</sup>  
Yatak Odası: 15 m<sup>2</sup>  
Evebeyn Banyosu: 5 m<sup>2</sup>  
Çocuk Odası: 10 m<sup>2</sup>  
Banyo: 3.5 m<sup>2</sup>  
Balkon: 10 m<sup>2</sup>



Kaliforniya 110m<sup>2</sup> - 2 Katlı Prefabrik Bina



## MADRID

iki Katlı  
3+1 / 120 m<sup>2</sup>

Zemin Kat /  
Hol: 4.5 m<sup>2</sup>  
Salon: 25 m<sup>2</sup>  
Mutfak: 15 m<sup>2</sup>  
WC: 3 m<sup>2</sup>  
Veranda: 5 m<sup>2</sup>

1.Kat /  
Hol: 5 m<sup>2</sup>  
Yatak Odası 1: 15 m<sup>2</sup>  
Yatak Odası 2: 12.5 m<sup>2</sup>  
Çocuk Odası: 10 m<sup>2</sup>  
Banyo: 5 m<sup>2</sup>  
Balkon: 5 m<sup>2</sup>





## BARCELONA

İki Katlı  
3+1 / 120 m<sup>2</sup>

Zemin Kat /  
Hol: 4.5 m<sup>2</sup>  
Salon: 30 m<sup>2</sup>  
Mutfak: 15 m<sup>2</sup>  
WC: 3 m<sup>2</sup>

1.Kat /  
Hol: 6 m<sup>2</sup>  
Yatak Odası: 15 m<sup>2</sup>  
Çocuk Odası 1: 10 m<sup>2</sup>  
Çocuk Odası 2: 10 m<sup>2</sup>  
Banyo: 7 m<sup>2</sup>  
Balkon: 5 m<sup>2</sup>





## BAKÜ

İki Katlı  
4+1 / 126 m<sup>2</sup>

Zemin Kat /  
Hol: 6 m<sup>2</sup>  
Salon+Mutfak: 32 m<sup>2</sup>  
Çocuk Odası: 7 m<sup>2</sup>  
Banyo: 7 m<sup>2</sup>  
Ön Veranda: 3 m<sup>2</sup>  
Arka Veranda: 3 m<sup>2</sup>



1.Kat /  
Hol: 6 m<sup>2</sup>  
Yatak Odası 1: 15 m<sup>2</sup>  
Yatak Odası 2: 10 m<sup>2</sup>  
Çocuk Odası: 13 m<sup>2</sup>  
Banyo: 6.5 m<sup>2</sup>  
Evebeyn Banyosu: 3.5 m<sup>2</sup>  
Balkon: 3 m<sup>2</sup>







STEELUPRO

MEKSIKA



STEELUPRO

MEKSIKA

## MEKSIKA

İki Katlı  
2+1 / 128 m<sup>2</sup>

Zemin Kat /  
Hol: 4 m<sup>2</sup>  
Salon: 25 m<sup>2</sup>  
Mutfak: 15 m<sup>2</sup>  
WC: 3.5 m<sup>2</sup>  
Veranda: 10 m<sup>2</sup>

1.Kat /  
Hol: 7 m<sup>2</sup>  
Yatak Odası 1: 15 m<sup>2</sup>  
Yatak Odası 2: 13.5 m<sup>2</sup>  
Banyo: 6.5 m<sup>2</sup>  
Evebeyn Banyosu: 5 m<sup>2</sup>  
Balkon: 10 m<sup>2</sup>



# Meksika 128m2 - 2 Katlı Prefabrik Bina



## VIETNAM

İki Katlı  
3+1 / 132 m<sup>2</sup>

Zemin Kat /  
Hol: 6 m<sup>2</sup>  
Salon: 30 m<sup>2</sup>  
Mutfak: 10 m<sup>2</sup>  
Banyo: 7 m<sup>2</sup>  
Veranda: 6.5 m<sup>2</sup>

1.Kat /  
Hol: 14 m<sup>2</sup>  
Yatak Odası : 13 m<sup>2</sup>  
Giyinme Odası : 3.5 m<sup>2</sup>  
Çocuk Odası 1: 7 m<sup>2</sup>  
Çocuk Odası 2: 6.5 m<sup>2</sup>  
Banyo: 7 m<sup>2</sup>  
Evebeyn Banyosu: 3.5 m<sup>2</sup>  
Balkon: 6.5 m<sup>2</sup>





## AMSTERDAM

İki Katlı  
3+1 / 133 m<sup>2</sup>

Zemin Kat /  
Hol: 10.5 m<sup>2</sup>  
Salon: 25.5 m<sup>2</sup>  
Mutfak: 11.5 m<sup>2</sup>  
WC: 5.5 m<sup>2</sup>  
Ön Veranda: 3 m<sup>2</sup>  
Arka Veranda: 5 m<sup>2</sup>

1. Kat /  
Hol: 6 m<sup>2</sup>  
Yatak Odası 1 : 15 m<sup>2</sup>  
Yatak Odası 2: 14 m<sup>2</sup>  
Çocuk Odası: 10 m<sup>2</sup>  
Banyo: 8 m<sup>2</sup>  
Balkon: 5 m<sup>2</sup>



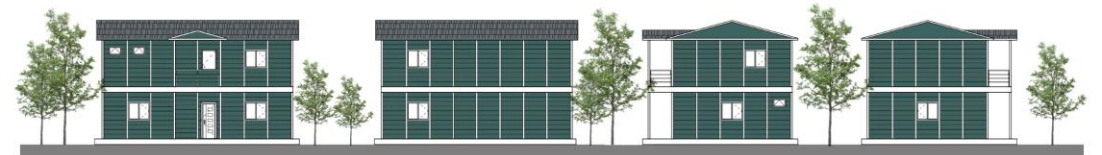


## SOFYA

İki Katlı  
3+1 / 140 m<sup>2</sup>

Zemin Kat /  
Hol: 9 m<sup>2</sup>  
Salon: 25 m<sup>2</sup>  
Mutfak: 19.5 m<sup>2</sup>  
WC: 5 m<sup>2</sup>  
Veranda: 3.5 m<sup>2</sup>

1.Kat /  
Hol: 9 m<sup>2</sup>  
Yatak Odası 1 : 15 m<sup>2</sup>  
Yatak Odası 2: 15 m<sup>2</sup>  
Çocuk Odası: 10 m<sup>2</sup>  
Banyo: 6 m<sup>2</sup>  
Evebeyn Banyosu: 3.5 m<sup>2</sup>  
Balkon: 3.5 m<sup>2</sup>



Sofya 140m<sup>2</sup> - 2 Katlı Prefabrik Bina



## MARSILYA

İki Katlı  
3+1 / 148 m<sup>2</sup>

Zemin Kat /  
Hol: 11.5 m<sup>2</sup>  
Salon: 25 m<sup>2</sup>  
Mutfak: 15 m<sup>2</sup>  
Banyo: 6 m<sup>2</sup>  
WC: 2.5 m<sup>2</sup>  
Veranda: 7 m<sup>2</sup>

1.Kat /  
Hol: 10 m<sup>2</sup>  
Yatak Odası: 15 m<sup>2</sup>  
Çocuk Odası 1: 15 m<sup>2</sup>  
Çocuk Odası 2: 10 m<sup>2</sup>  
Banyo: 6.5 m<sup>2</sup>  
Evebeyn Banyosu: 3.5 m<sup>2</sup>  
Balkon: 7 m<sup>2</sup>





## DUBAI

İki Katlı  
3+1 / 152 m<sup>2</sup>

Zemin Kat /  
Hol: 12 m<sup>2</sup>  
Salon: 25 m<sup>2</sup>  
Mutfak: 15 m<sup>2</sup>  
Banyo: 6.5 m<sup>2</sup>  
Kiler: 3.5 m<sup>2</sup>  
Veranda: 6.5 m<sup>2</sup>

1.Kat /  
Hol: 7.5 m<sup>2</sup>  
Yatak Odası 1: 17 m<sup>2</sup>  
Yatak Odası 2: 17 m<sup>2</sup>  
Çocuk Odası: 10 m<sup>2</sup>  
Banyo: 6.5 m<sup>2</sup>  
Evebeyn Banyosu: 3.5 m<sup>2</sup>  
Balkon: 6.5 m<sup>2</sup>





## DUBLIN

İki Katlı  
4+1 / 171 m<sup>2</sup>

Zemin Kat /  
Hol: 11.5 m<sup>2</sup>  
Salon: 25 m<sup>2</sup>  
Mutfak: 15 m<sup>2</sup>  
Çocuk Odası: 10 m<sup>2</sup>  
Banyo: 5 m<sup>2</sup>  
Veranda: 12 m<sup>2</sup>

1.Kat /  
Hol: 9 m<sup>2</sup>  
Yatak Odası 1: 17 m<sup>2</sup>  
Yatak Odası 2: 15 m<sup>2</sup>  
Çocuk Odası: 10 m<sup>2</sup>  
Banyo: 10 m<sup>2</sup>  
Evebeyn Banyosu: 5 m<sup>2</sup>  
Balkon: 12 m<sup>2</sup>

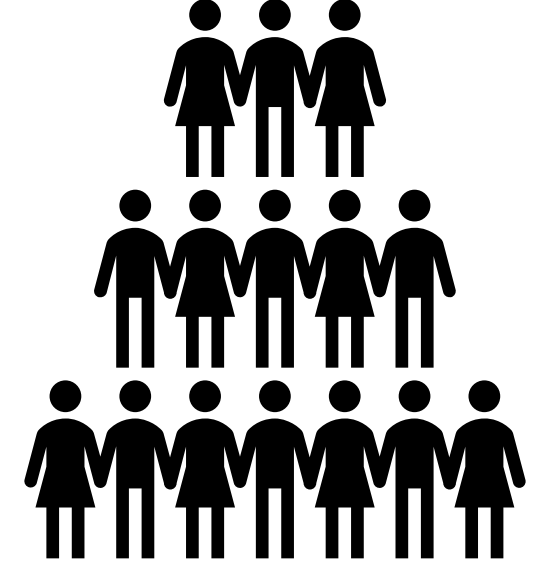


 Yönetim Kurulu : 3

 İcra Kurulu Üyesi : 4

 Beyaz Yaka Çalışan : 12

 Mavi Yaka Çalışan : 25





\*\*Türk Kızılayı

\*\*IGA

\*\*Enka

\*\*Unitek

\*\*Setap

\*\*Danış Yapı

\*\*Rönesans

\*\*Sanmar

\*\*Kalyon

\*\*Gemak

\*\*MMK Metalurji

\*\*BTD İnşaat

\*\*Traton İnşaat

\*\*İ.B.B

\*\*Omsan



**ENKA**



**Referanslarımızdan Bazıları**

