

Full Product Catalogue

Welcome to JAG Plumbing Products.

Quality plumbing and repair parts for all your needs:

Commercial
Tub, Sink and Drain
Faucet
Toilet
Accessories
Distribution

Please Note:

Where Possible, JAG Parts are cross referenced to OEM (Original Equipment Manufacturer) numbers, registered/non registered trademarks, names, brands, and manufacturers. These are marked with an asterisk () in this Catalogue and are supplied and listed for your reference only.*

2018 Catalogue

We are constantly adding new products to our distribution and private label line. If you don't see it in our Catalogue, please call us

at 1 855 686 0133

JAG PLUMBING PRODUCTS

Pickering, Ontario
Canada L1W 2Y5

1 855 686 0133
www.JAGPlumbingProducts.com



Contents:

Commercial	Page 8
Tub, Sink and Drain	Page
Faucet	Page
Toilet	Page
Accessories	Page
Distribution	Page
Terms and Conditions	Page

Commercial Products:

Faucets	Page
Flushometer Repair	Page
Drinking Fountain Repair	Page

Commercial Faucets:

JAG Commercial
8" Wide Spread Deck Mount
Pre-Rinse Assembly

JAG Part #: 17-701



JAG Commercial
8" Wide Spread Wall Mount
Pre-Rinse Assembly

JAG Part #: 17-702



JAG Commercial
4" Centres Double Pantry Deck Mount
Pre-Rinse Assembly

JAG Part #: 17-703



JAG Commercial
8" Wide Spread Wall Mount
with 10" Spout.

JAG Part #: 17-706



JAG Commercial
4" Centres Wall Mount
With 6" Gooseneck Spout.

JAG Part #: 17-707



JAG Commercial
8" Wide Spread Wall Mount
Service Sink Faucet.

JAG Part #: 17-708



JAG Commercial
Add On Spouts for JAG Commercial
Faucets

6" Spout
JAG Part #: 17-704

10" Spout
JAG Part #: 17-705



Part#	Description	Fits
17-711	Deck Mount Connector Assembly fits JAG Faucets	JAG: 17-701 and 17-708
17-712	Handle Assembly fits JAG Faucets	JAG: 17-701, 17-702, 17-703, 17-404, 17-705, 17-706 and 17-708
17-713	Cartridge Assembly fits JAG Faucets: Cold	JAG: 17-701, 17-703 and 17-708
17-714	Cartridge Assembly fits JAG Faucets: Hot	JAG: 17-701, 17-703 and 17-708
17-715	Riser Tube fits JAG Faucets	JAG: 17-701, 17-702 and 17-703
17-716	Wall Bracket for JAG Faucets	JAG: 17-701, 17-702 and 17-703
17-717	Spray Hook fits JAG Faucets	JAG: 17-701, 17-702 and 17-703
17-718	Spring Retainer fits JAG Faucets	JAG: 17-701, 17-702 and 17-703
17-719	Spray Hose and Assembly fits JAG Faucets	JAG: 17-701, 17-702 and 17-703
17-720	Hose spring fist JAG Faucets	JAG: 17-701, 17-702 and 17-703
17-721	Wall Mount Connector Assembly for JAG Faucets	JAG:17-702
17-722	Cartridge Assembly fits JAG Faucets: Cold	JAG: 17-702 and 17-706
17-723	Cartridge Assembly fits JAG Faucets: Hot	JAG: 17-702 and 17-706
17-725	Tube Connector Assembly fits JAG faucets	JAG: 17-702
17-731	Mixet Valve for JAG Faucets	JAG: 17-703
17-732	Lock Nut Assembly fits JAG Faucets	JAG: 17-703
17-740	Cartridge Assembly for JAG Faucets: Cold	JAG: 17-704 and 17-705
17-741	Cartridge Assembly for JAG Faucets: Hot	JAG: 17-704 and 17-705
17-747	Faucet Connector Tube for JAG Faucets:	JAG: 17-704 and 17-705
17-771	Handle Assembly fits JAG Faucets	JAG: 17-707
17-772	Bonnett Nut Assembly fist JAG Faucets	JAG: 17-707
17-773	Cartridge COLD for JAG Faucets	JAG: 17-707
17-774	Cartridge HOT for JAG Faucets	JAG: 17-707
17-775	Face Plate for JAG Faucets	JAG: 17-707
17-783	Check Stop Valve for JAG Faucets	JAG: 17-708
17-786	Vacuum Breaker Fits JAG Faucets	JAG: 17-708
17-788	Wall Bracket fist JAG Faucets	JAG: 17-708

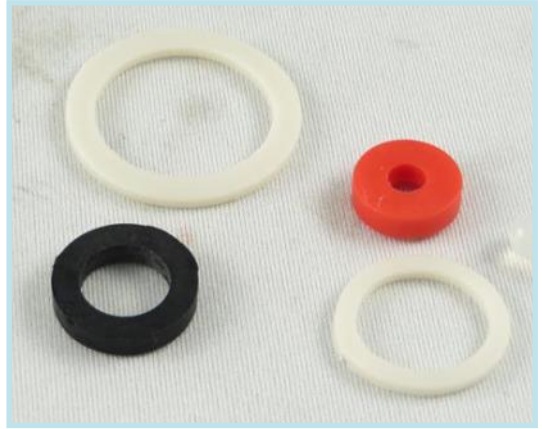
T&S BRASS*

SPINDLE REBUILD KIT

Eterna* Faucet Repair

JAG Part #: 18-500

OEM Reference #: 002713-40*, 002714-40*



T&S BRASS*

NEW STYLE FACE PLATE

1.42 GPM at 60 psi

JAG Part #: 18-498

OEM Reference #: TSI121-45*



T&S BRASS*

SPINDLE REBUILD KIT

Eterna* Faucet Repair with Spring Check Assembly

JAG Part #: 18-499

OEM Reference #: 002711-40*, 002712-40*



Flushometer Repair Parts:

CRANE*

Repair Kit for Flushometers

Crane* Presto* Toilet Repair

JAG Part #: 18-265

OEM Reference #: 039003*

Crane* Presto* Urinal Repair

JAG Part #: 18-266

OEM Reference #: 039002*

Crane* Presto* Toilet Repair

JAG Part #: 18-267

OEM Reference #: 039003*

Crane* Presto* Urinal Repair

JAG Part #: 18-268

OEM Reference #: 427A*

Also proven to fit some models of: Sloan*, Delaney*, Presto*, Rex*



CRANE*

Vacuum Breaker

Crane* Presto* Repair

JAG Part #: 18-269

OEM Reference #: R35A*

Also proven to fit some models of: Sloan*, Delaney*, Presto*, Rex*

CRANE*

Flush Valve Handle

Crane Presto

JAG Part #: 18-270

OEM Reference #: 23-1/2"

JAG Part #: 18-470

OEM Reference #: R333A*

Also proven to fit some models of: Sloan*, Delaney*, Presto*, Rex*



CRANE*

Shut off Valve Rebuild Kit

JAG Part #: 18-503

OEM Reference #: 44-4AJ*

Also proven to fit some models of: Sloan*, Delaney*, Presto*, Rex*



AMERICAN STANDARD*

Actuating Cartridge With Pin

JAG Part #: 18-491

OEM Reference #: 302AG*



DELTA*

Rebuild Kits for Flushometers

FULL

JAG Part #: 18-581

OEM Reference #: 76601*

HANDLE ONLY

JAG Part #: 18-582

HANDLE AND CAGE

JAG Part #: 18-583

OEM Reference #: 76602*

CAGE ACTUATOR ONLY

JAG Part #: 18-795

OEM Reference #: 77191*

Also proven to fit some models of: Teck I* and Teck II*



DELTA*

Vacuum Breaker Assembly

JAG Part #: 18-580

OEM Reference #: 70267*

Also proven to fit some models of: Teck I* and Teck II*



HUNTER/LAVELLE*

Diaphragm and Cap

JAG Part #: 18-099

OEM Reference #: R528*



SLOAN

Inside Parts Kit for Flushometers

1.6 GPF Toilet

JAG Part #: 18-122

OEM Reference #: A-41-A, Z600-EU

1.0 GPF Urinal

JAG Part #: 18-123

OEM Reference #: A-42-A

0.5 GPF Urinal

JAG Part #: 18-124

1.6 GPF Toilet

JAG Part #: 18-129

OEM Reference #: A-1041-AA, Z600-EU

1.0 GPF Urinal

JAG Part #: 18-130

OEM Reference #: A-1042-A

0.5 GPF Urinal

JAG Part #: 18-131

3.5 GPF Toilet and Urinal

JAG Part #: 18-252

OEM Reference #: A-38-A*

Also proven to fit some models of: Zurn*



SLOAN

Flushmate Replacement Cartridge

Fits all Series 500* Sloan* systems

JAG Part #: 18-207

OEM Reference #: C100500K

Flushmate Cartridge Tool

Use with a 3/8" socket wrench to extract and install any Sloan* Flushmate Cartridges

JAG Part #: 18-208



SLOAN

MasterPro* Repair Kit

1.5 GPF Urinal

JAG Part #: 18-126

OEM Reference #: R-1011-A*

1.6 GPF Toilet

JAG Part #: 18-127

0.5 GPF Urinal

JAG Part #: 18-128

Also proven to fit some models of: Zurn*



SLOAN

Flush Valve Diaphragm

JAG Part #: 18-253

OEM Reference #: 10316*

Also proven to fit some models of: Teck* II Delta*, Zurn*



SLOAN

Flush Valve Shut Off Cover Vandalproof

Cover 3/4"

JAG Part #: 18-255

OEM Reference #: H1009A*

Cover 1"

JAG Part #: 18-256

OEM Reference #: H110A*

Also proven to fit some models of: Zurn*



SLOAN

Flushometer Handle Seals

JAG Part #: 18-388

OEM Reference #: B-39-A*

JAG Part #: 18-389

OEM Reference #: B-50-A*



SLOAN*

Flushometer Handle Assembly

JAG Part #: 18-390

OEM Reference #: B73A*

Also proven to fit some models of: Zurn*



SLOAN*

Actuator Cartridge Repair

Solenoid

JAG Part #: 18-494

OEM Reference #: EL-128-A*

Hydraulic

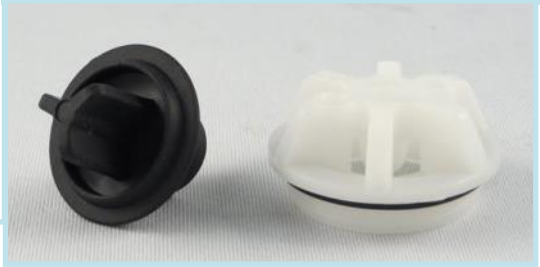
JAG Part #: 18-495

OEM Reference #: HY-83-A*

Vacuum Assembly

JAG Part #: 18-501

OEM Reference #: 892-302KJKNF*



SLOAN*

Chemical Resistant Diaphragm

JAG Part #: 18-360

OEM Reference #: P00-E15*



SLOAN*

Relief Valve

JAG Part #: 18-555

OEM Reference #: A-19

Also Proven to Fit: Zurn*



Drinking Fountain Repair:

ELKAY*

Repair Cartridge

GREEN SPRING

JAG Part #: 18-813

OEM Reference #: 61314C*

RED SPRING

JAG Part #: 18-814

OEM Reference #: 61313C*

NO SPRING

JAG Part #: 18-815

OEM Reference #: 66654C*

Also Fits: Hawes*, Halsey-Taylor*



ELKAY*

Regulator Repair Kit: Spring and Holder

GREEN SPRING

JAG Part #: 18-816

OEM Reference #: 98531C*

RED SPRING

JAG Part #: 18-817

OEM Reference #: 98530C*

Also Fits: Hawes*, Halsey-Taylor*



Tub, Sink and Drain

Commercial	Page 8
Tub, Sink and Drain	Page
Faucet	Page
Toilet	Page
Accessories	Page
Distribution	Page
Terms and Conditions	Page

Overflow:

JAG UNIVERSAL

Lift Turn Strainer and Overflow Assembly

Fits 1-3/8" x 6 Fine Thread or 1-1/2" - 11-1/2" Pipe Thread
Includes Bushing, Converter Bar, Overflow Plate and Screw (2" X 1/4")

JAG Part #: 17-243



JAG UNIVERSAL

Oversized Waste and Overflow Cover

JAG Part #: 18-502



JAG UNIVERSAL

Waste and Overflow Cover, 1 Screw

CHROME

JAG Part #: 17-244

BRUSHED NICKEL

JAG Part #: 17-245



JAG Universal

Plastic Drain Bushing/Adapter

8"-16 UN x 1-1/2"-11.5NPSM

JAG Part #: 17-246



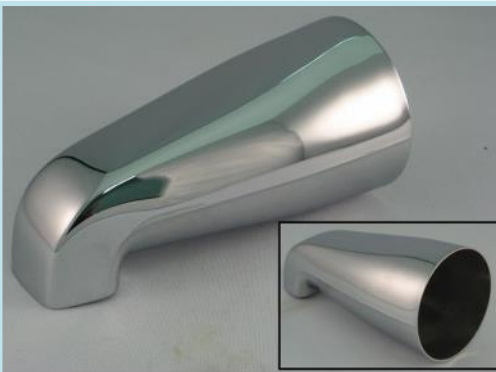
Tub Spouts:



JAG Universal TUB SPOUTS

Slip Fit,
No Diverter
Chrome
JAG Part #: 18-225
Brushed Nickel
JAG Part #: 18-340

3/4" threaded with 1/2" bushing,
No Diverter
Chrome
JAG Part #: 18-226



1/2" threaded at nose
No Diverter
Chrome
JAG Part #: 18-227



Slip Fit
With Diverter
Chrome
JAG Part #: 18-228
Brushed Nickel
JAG Part #: 18-341



3/4" threaded with 1/2" bushing,
With Diverter
Chrome
JAG Part #: 18-231

JAG PLUMBING PRODUCTS

JAG Universal TUB SPOUTS



1/2" threaded at nose
With Diverter
Chrome
JAG Part #: 18-229

3/4" threaded with 1/2" bushing,
With Diverter and
With Handheld Attachment
Chrome
JAG Part #: 18-230



Ornate Slip Fit
With Diverter
Chrome
JAG Part #: 18-338
Brushed Nickel
JAG Part #: 18-342



InSinkErator:

INSINKERATOR* Sink Drain Components

BLACK PLUG
JAG Part #: 18-003

ALMOND PLUG
JAG Part #: 18-004

WHITE
JAG Part #: 18-005

BLACK WITH FLAPS
JAG Part #: 18-006

BLACK WITH FINGERS
JAG Part #: 18-007



Baskets, Strainers and Drains:

JAG Universal Sink Drain and Strainer

SPIN and LOCK
JAG Part #: 18-410



PUSH IN CRUMB BASKET
JAG Part #: 18-413



PUSH IN CRUMB BASKET and EXTEND-
ED TAILPIECE
JAG Part #: 18-415



BAR/LAUNDRY SINK
JAG Part #: 18-412



**JAG Universal
STRAINERS**

WITH POST
JAG Part #: 18-411

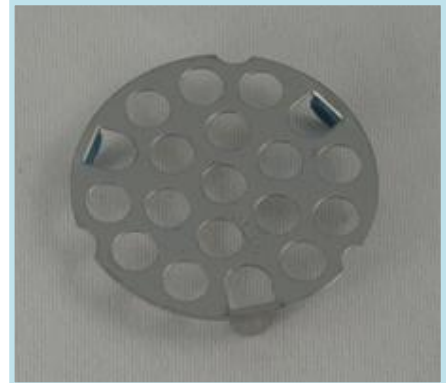


PUSH TO SEAL
JAG Part #: 18-414



**JAG Universal
BAR SINK STRAINERS**

PUSH IN GRID, 3 PRING 1-5/8'
JAG Part #: 18-416



PUSH IN GRID, 3 PRING 1-7/8'
JAG Part #: 18-417



CRUMB CUP WITH POST
JAG Part #: 18-418

CRUMB CUP NO POST
JAG Part #: 18-419



Under-Counter Repair:



**JAG Universal
Counter Repair Plate, 8" Width Polycarbonate**

3 Holes

JAG Part #: 18-801

3 Open Slots

JAG Part #: 18-802



**JAG Universal
Counter Repair Plate, 4" Width Polycarbonate**

3 Holes

JAG Part #: 18-803

3 Open Slots

JAG Part #: 18-804



AMERICAN STANDARD*
POP UP PLUG

4.71" H x 1.48" D

JAG Part #: 18-434



DELTA*
POP UP PLUG

5.9" H x 1.35" D

CHROME

JAG Part #: 18-435

POLISHED BRASS

JAG Part #: 17-255



ELJER*
POP-UP PLUG

4.15" H x 1.29" D

JAG Part #: 18-436



GERBER*
POP-UP PLUG

4.15" H x 1.30" D

JAG Part #: 18-437



KOHLER*
POP-UP PLUG

4.06" H x 1.32" D

JAG Part #: 18-438



MOEN*

POP-UP PLUG

5" H x 1.23" D

JAG Part #: 18-439

4.71" H x 1.22" D

JAG Part #: 18-440



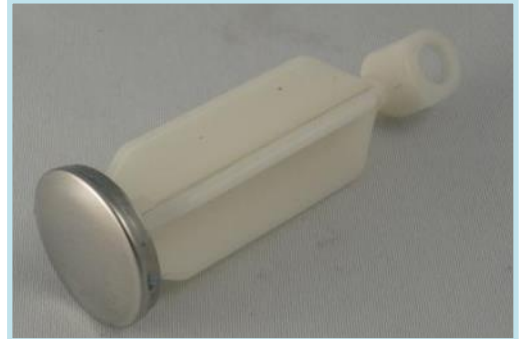
MOEN*

POP-UP PLUG

3.95" H x 1.33" D

JAG Part #: 18-441

Also proven to fit some models of: Streamway*



PFISTER*

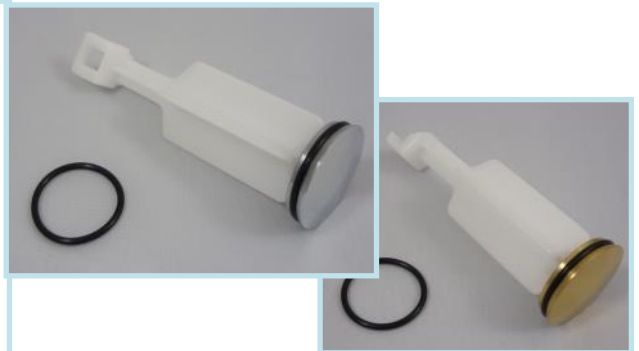
POP-UP PLUG

CHROME

JAG Part #: 17-252

POLISHED BRASS

JAG Part #: 17-253

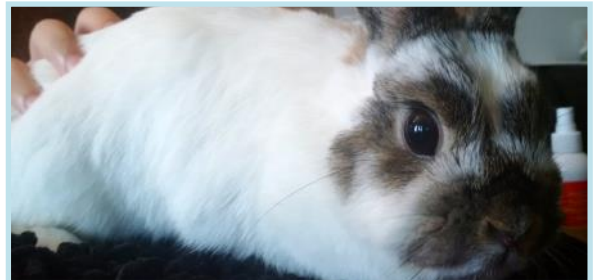


SYMMONS*

POP-UP PLUG

JAG Part #: 18-840

OEM Reference #: P-100N*



JAG Universal

POP-UP PLUG

JAG Part #: 17-254



JAG Universal
FAUCET SHANK EXTENSION

WHITE PLASTIC
JAG Part #: 18-000

SOLID BRASS
JAG Part #: 18-097



JAG Universal
BASIN ROSETTE / SPACER KIT

4 pieces

JAG Part #: 18-442



JAG Universal
Pivot Rod Assembly

13" steel rod / CP Brass Nut

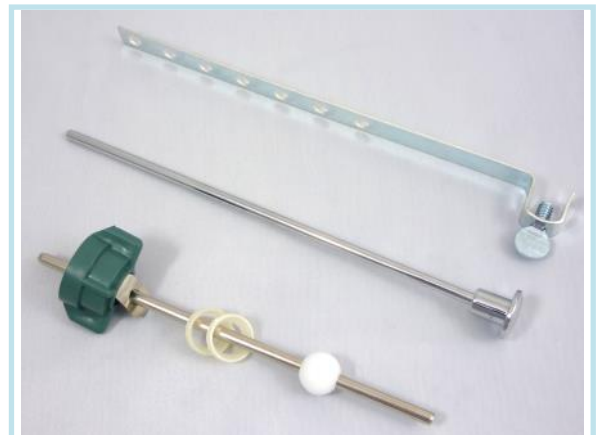
JAG Part #: 18-556



JAG Universal
POP-UP ROD ASSEMBLY

3/16" x 8": Brass Rod, Brass Thumb-Screw, Steel Pull-Up Rod, Plastic Pivot Ball and Drain Attachment

JAG Part #: 17-259



Faucets:

Aerators

Page

Cartridges

Page

Aerators:

JAG Universal DUAL THREAD AERATORS

JAG Part #: 17-101
Packaged: Single Aerators in bags
Type: Slot-less
Size: 15/16" male by 55/64" female
Flow: Full 2.0 GPM at 60 psi
Finish: Chrome

JAG Part #: 17-104
Packaged: Single Aerators in bags
Type: Slot-less
Size: 15/16" male by 55/64" female
Flow: Full flow at 60 psi
Finish: Chrome

JAG Part #: 17-107
Packaged: 6 Aerators in a tube
Type: Regular
Size: 15/16" male by 55/64" female
Flow: Full 1.5 GPM at 60 psi
Finish: Chrome

JAG Part #: 17-108
Packaged: 6 Aerators in a tube
Type: Regular
Size: 15/16" male by 55/64" female
Flow: Full 2.2 GPM at 60 psi
Finish: Chrome



Cartridges:

ALTMANS*

1/2" Ceramic Cartridge

COLD

JAG Part #: 18-560

OEM Reference #: M5706*, OLC3CI

HOT

JAG Part #: 18-561

OEM Reference #: M5706*, OLC3CI

Also proven to fit some models of: Rubinet*, Phylrich*, Sigma*



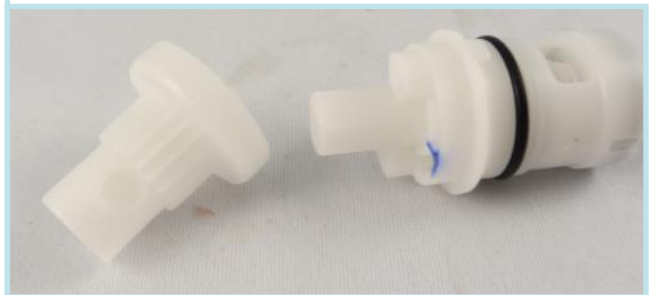
AMERICAN STANDARD*

Cartridge and Handle Adapter

Fits Colony* II

JAG Part #: 18-767

OEM Reference #: 954120-0070A*, A954



BRADLEY*

Faucet Stem

JAG Part #: 18-477

OEM Reference #: 300-0050*

Also proven to fit some models of: Sayco*, Briggs*, Kohler*, JPI*, Sears* and Brad-Trol*



CRANE*

Faucet Cartridge

COLD

JAG Part #: 18-454

OEM Reference #: 354001/039038*; CR-1*

HOT

JAG Part #: 18-455

OEM Reference #: 354001/039038*; CR-1*

Also proven to fit some models of: Dialese*



CUTHBERT*

Faucet Cartridge

COLD or HOT

JAG Part #: 18-460

OEM Reference #: M11*; CU-5*

Also proven to fit some models of: Belanger*

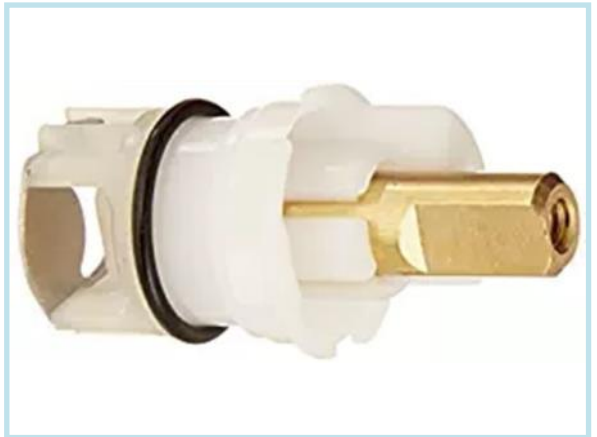


DELTA*

Faucet Cartridge - Older Models

JAG Part #: 17-096

OEM Reference #: RP24096*



DELTA*

Faucet Repair Kit

- Includes wrench, o-rings, springs, gaskets and rings

JAG Part #: 18-257

Also proven to fit some models of: Delex*, Peerless*



DELTA*

Seats and Springs Kit

- Includes: Springs, gaskets and Rings

JAG Part #: 18-258

Also proven to fit some models of: Delex*, Peerless*



DELTA*

Stainless Steel Repair Ball

- Ball-70* style in stainless steel

JAG Part #: 18-259

OEM Reference #: RP70*

Also proven to fit some models of: Delex*, Peerless*



DELTA*

Stainless Steel Repair Ball

- Ball-212* style in stainless steel

JAG Part #: 18-260

OEM Reference #: RP212*

Also proven to fit some models of: Delex*, Peerless*



DELTA*

New Style Faucet Cartridge

COLD or HOT

JAG Part #: 18-261

OEM Reference #: RP1974*

Also proven to fit some models of: Delex*, Peerless*



DELTA*

Tub/Shower Cartridge

- Plastic Cartridge and Brass Stem plus spring for Delta* Scald-Guard*

JAG Part #: 18-262

OEM Reference #: RP3550*

Also proven to fit some models of: Delex*, Peerless*



DELTA

Slow Close Cartridge

COLD or HOT

JAG Part #: 18-264

OEM Reference #: RP6399*

Also proven to fit some models of: Delex*, Peerless*



DELTA*

Tub/Shower Cartridge

- Plastic Cartridge and Brass Stem for Delta* Monitor*
- Fits 1300* and 1400* Series Faucets
- Short Legs

JAG Part #: 18-557

OEM Reference #: RP19804*



DELTA*

Tub/Shower Cartridge

- Plastic Cartridge and Brass Stem for Delta* Monitor*
- Fits 1300* and 1400* Series Faucets
- Long Legs

JAG Part #: 19-557

OEM Reference #: RP46074



DELTA*
Rebuild Kit

- Brass ball, springs rings and Handle assembly
- Chrome escutcheon and Acrylic ball handle
- For Delta* Peerless* single handle tub and shower faucet

JAG Part #: 18-594



DELTA*
Rebuild Kit

- Brass ball, springs rings and Handle assembly
- Chrome escutcheon and Acrylic ball handle
- For Delta* Peerless* single handle faucet

JAG Part #: 18-598



EMCO*
1/2" Cartridge

COLD or HOT

JAG Part #: 18-453

OEM Reference #: 54-195223/4157*; E-4*



EMCO*
Diverter Cartridge and Button

JAG Part #: 18-456

OEM Reference #: 2285/51-193782*; E-12A*



EMCO
Diverter Cartridge

JAG Part #: 18-457
OEM Reference #: 51-193209/2275*; E-11*



EMCO*
Diverter Cartridge

JAG Part #: 18-463
OEM Reference #: 51-193210*; E-12*



EMCO*
1/2" Cartridge

COLD or HOT
JAG Part #: 18-465
OEM Reference #: 1057*; E-1*



GALT*
Tub/Shower Cartridge

- Brass Stem for tub and shower valves 1953-1963

COLD or HOT
JAG Part #: 18-464
OEM Reference #: 70281*; G-7*

Also known as: GaltMaster*



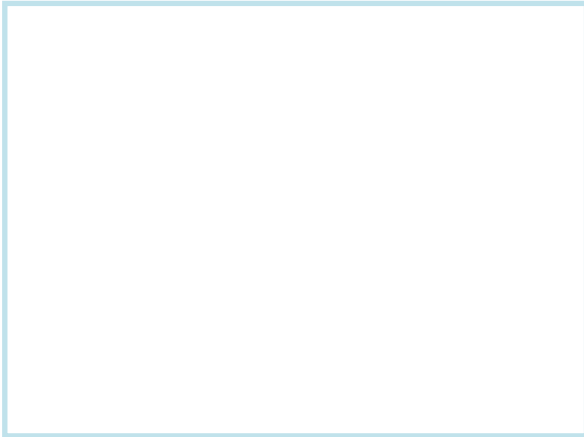
GLACIER BAY*

Pressure Balance Cartridge

- Glacier Bay* is a Home Depot* Brand
- Base Diameter Measures 1-1/4"

JAG Part #: 17-003

Also proven to fit some models of: Imports*



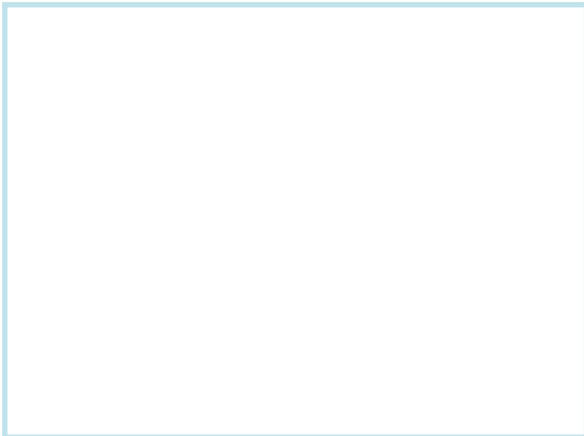
GLACIER BAY*

Scald Guard Cartridge Assembly

- Glacier Bay* is a Home Depot* Brand
- Fits 17-003 - Pressure Balance Cartridge

JAG Part #: 17-004

Also proven to fit some models of: Imports*



GLACIER BAY*

Cartridge for Single-Handle Faucets

- Glacier Bay* is a Home Depot* Brand

JAG Part #: 17-380

OEM Reference #: 973-9004*, 873-0127H2*, 873-0004*, 873-7096*, 876-6004* and 873-6001*

Also proven to fit some models of: Imports*



GLACIER BAY*

Cartridge for Single-Handle Faucets

- Glacier Bay* is a Home Depot* Brand
- Base Diameter Measures 1-1/2" or 45mm

JAG Part #: 17-381

OEM Reference #: 58377*

Also proven to fit some models of: Imports*



GLACIER BAY*

Ceramic Cartridge

- Glacier Bay* is a Home Depot* Brand
- Base Diameter Measures 1-3/8" or 35mm

JAG Part #: 17-382

OEM Reference #: 10738*

Also proven to fit some models of: Uberhaus* (UB-12*), Aquasource* and other Imports*



GLACIER BAY*

Cartridge for 2 Handle Faucets

COLD

JAG Part #: 17-384

OEM Reference #: 3S-15C

HOT

JAG Part #: 17-383

OEM Reference #: 3S-15H

Also proven to fit some models of: Pegasus* and Imports*



GLACIER BAY*

Cartridge for 2 Handle Faucets

COLD

JAG Part #: 17-385

OEM Reference #: 3Z-16C

HOT

JAG Part #: 17-386

OEM Reference #: 3Z-16H

Also proven to fit some models of: Pegasus* and Imports*



GLACIER BAY*

Ceramic Tub and Shower Cartridge

- Glacier Bay* is a Home Depot* Brand
- Base Diameter Measures 1-1/2"

JAG Part #: 17-391

Also proven to fit some models of: Pegasus*, Uberhaus* (UB-12*), Aquasource*, Delta* (RP70538*) and other Imports*



GLACIER BAY*

Cartridge for 2 Handle Faucets

- Glacier Bay* is a Home Depot* Brand

COLD

JAG Part #: 17-388

OEM Reference #: 101-627*

HOT

JAG Part #: 17-387

OEM Reference #: 101-677*

Also proven to fit some models of: Pegasus* and Imports*



GLACIER BAY*

Cartridge for 2 Handle Faucets

- Glacier Bay* is a Home Depot* Brand

COLD

JAG Part #: 17-389

OEM Reference #: 101-626*

HOT

JAG Part #: 17-390

OEM Reference #: 101-676*

Also proven to fit some models of: Pegasus* and Imports*



GLACIER BAY*

Cartridge for 2 Handle Faucets

- Glacier Bay* is a Home Depot* Brand

COLD

JAG Part #: 18-565

OEM Reference #: 3S-11C

HOT

JAG Part #: 18-564

OEM Reference #: 3S-11H

Also proven to fit some models of: Delta*, RP20013*, RP20014*, Pegasus* and Imports**



GLACIER BAY*

Cartridge for 2 Handle Faucets

- Glacier Bay* is a Home Depot* Brand

COLD

JAG Part #: 18-567

OEM Reference #: 3S-10C

HOT

JAG Part #: 18-566

OEM Reference #: 3S-10H

Also proven to fit some models of: Pegasus* and Imports*



GLACIER BAY*

Cartridge for 2 Handle Faucets

- Glacier Bay* is a Home Depot* Brand

COLD

JAG Part #: 18-569

OEM Reference #: 3S-12C

HOT

JAG Part #: 18-568

OEM Reference #: 3S-12H

Also proven to fit some models of: Pegasus* and Imports*



GLACIER BAY*

Tub and Shower Stem Assembly

- Glacier Bay* is a Home Depot* Brand

JAG Part #: 18-570

Also proven to fit some models of: Pegasus* and Imports*



GLACIER BAY*

Cartridge for Single-Handle Faucets

- Glacier Bay* is a Home Depot* Brand
- Base Diameter Measures 1-1/2"

JAG Part #: 18-571

Also proven to fit some models of: Hain-Yo*, N35D*, Pegasus* and Imports*



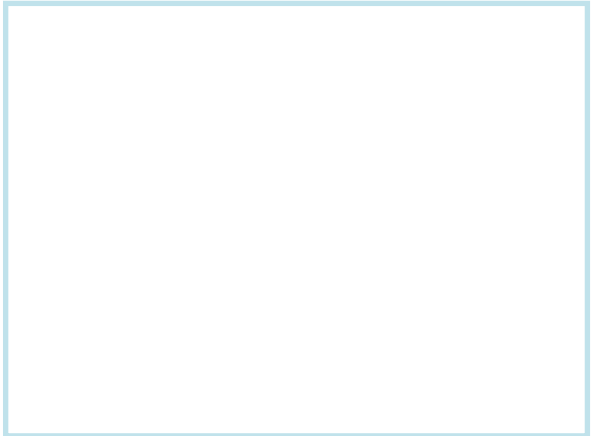
JAG Universal Import

Cartridge for Single-Handle Faucets

- Barry Walter # ABRCC19023 6+price is \$14.48 for the HJ-40 Cartridge Replacement 40 MM Diameter; located at Everflow being tested Jan 10 2017
- price is \$14.48 for the HJ-40 Cartridge Replacement 40 MM Diameter; located at Everflow being tested Jan 10 2017

JAG Part #: 18-999

Also proven to fit some models of: Hain-Yo*, N40D*, Pegasus* and Imports*



JAMECO*

Cartridge for 2 Handle Faucets

COLD

JAG Part #: 18-461

OEM Reference #: 1100*; J-1*

HOT

JAG Part #: 18-462

OEM Reference #: 1101*; J-2*



KEROX*

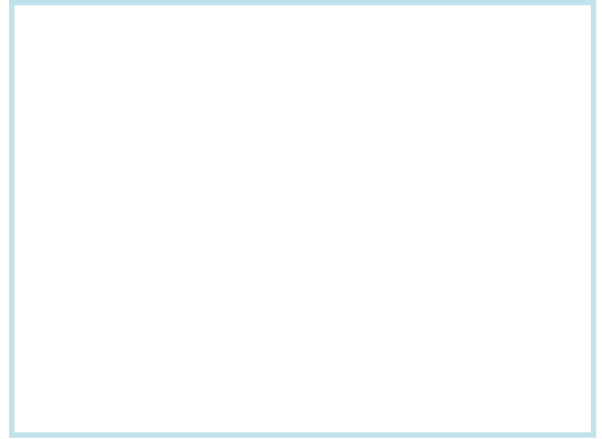
Ceramic Cartridge

- fits many applications replacing Kerox* K-35B*
- Base Diameter Measures 35mm

JAG Part #: 17-001

OEM Reference #: K-35B

Also proven to fit some models of: Glacier Bay*, Hain-Yo*,
N35D*, Pegasus* and Imports*



KEROX*

Ceramic Cartridge

- fits many applications replacing Kerox* K-40B*
- Base Diameter Measures 40mm

JAG Part #: 17-002

OEM Reference #: K-40B

Also proven to fit some models of: Glacier Bay*, Hain-Yo*,
N35D*, Pegasus* and Imports*



KOHLER*

Single Lever Cartridge

- Single control valve for older style faucets

JAG Part #: 18-528

OEM Reference #: GP30413, 46-0413



KOHLER*

Tub and Shower Mixer Cap

- Mixer cap for Older Style Coralais
- Brass Stem

JAG Part #: 18-586

OEM Reference #: GP77886*

Also proven to fit some models of: Sterling*



KOHLER*

Tub/Shower Mixer Cartridge

- Cartridge fits Fairfax, Avatar, Coralais or Falling Water
- For Rite-Temp Valves
- Works with JAG 18-588

JAG Part #: 18-587

OEM Reference #: GP76851*

Also proven to fit some models of: Sterling*



KOHLER*

Pressure Balancing Spool

- Used in most 1/2" shower valves with single handle
- For Rite-Temp Valves
- Works with JAG 18-587

JAG Part #: 18-588

OEM Reference #: GP500520*

Also proven to fit some models of: Sterling*



MOEN*

Single Handle Cartridge

- Brass Stem, clear cartridge and removal tool

SINGLE

JAG Part #: 18-102

5-PACK

JAG Part #: 18-103

OEM Reference #: #1225B*, 1225(SM-1)*



MOEN*

Single Handle Cartridge

- Brass Stem, Solid Brass cartridge and removal tool

SINGLE

JAG Part #: 18-104

5-PACK

JAG Part #: 18-105

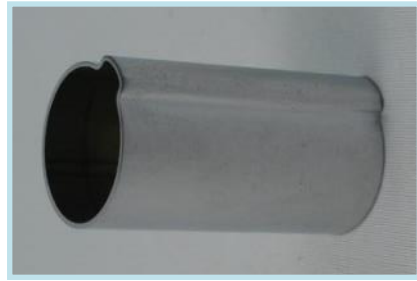
OEM Reference #: #1200B*



MOEN*

Shower Flange Tube

JAG Part #: 18-106



MOEN*

Single Handle Cartridge

- Brass Stem, Teflon* balancing spool
- For Posi-Temp

JAG Part #: 18-107

OEM Reference #: 1222B*



MOEN*

Single Handle Cartridge Kit

- Institutional grade brass assembly and chemical resistant side seals
- For Posi-Temp

JAG Part #: 18-108

OEM Reference #: #1200*, 1225*



MOEN*

Rebuild Kit for Single Lever Faucet

JAG Part #: 18-597



MOEN*

Rebuild Kit for Single Handle Faucet

JAG Part #: 18-595

OEM Reference #: #1200B*



MOEN*

Journeyman Parts Kit

- Over 40 repair parts, including Cartridges, Handles, Clips, O-rings, Seals, Caps and a Combination cartridge puller tool

JAG Part #: 18-109

OEM Reference #: 1200*, 1200B* 1225*



MOEN*

Cartridge Tool

- Fits Moen* Posi-Temp, and all other Moen Cartridges

JAG Part #: 18-148



PFISTER*

Cartridge for 2 Handle Faucet

COLD

JAG Part #: 18-768

OEM Reference #: 910-025*, 910-032*

HOT

JAG Part #: 18-769

OEM Reference #: 910-024*, 910-031*



POWERS*

Pressure Balancing Spool

- Fits 400* and 410* series, models 1 through 3

JAG Part #: 18-239

OEM Reference #: 410-183*

Also proven to fit some models of: Biltmore*



POWERS*

Brass Stem Kit

- Fits 400* and 410* series, models 1 through 3

JAG Part #: 18-240

OEM Reference #: 410-378*

Also proven to fit some models of: Biltmore*



POWERS*

Plastic Stem Kit

- Fits 400* series faucets

JAG Part #: 18-241

OEM Reference #: 401-176*

Also proven to fit some models of: Biltmore*



POWERS*

Pressure Balancing Spool

- Fits 400* and 410* series faucets, models 4 through 6

JAG Part #: 18-242

OEM Reference #: 401-175*

Also proven to fit some models of: Biltmore*



POWERS*

Cartridge and Spool

- Fits 800* series faucets

JAG Part #: 18-243

OEM Reference #: 800-163*

Also proven to fit some models of: Biltmore*



POWERS*

Cartridge and Spool

- Fits 900* series

JAG Part #: 18-244

OEM Reference #: 900-031*

Also proven to fit some models of: Biltmore*



POWERS*

Integral Stops

- Fits 900* series

JAG Part #: 18-245

OEM Reference #: 900-049*

Also proven to fit some models of: Biltmore*



POWERS*

Rebuild Kit

- Fits 400* and 410* series with handles and caps

JAG Part #: 18-249

OEM Reference #: 410-182*

Also proven to fit some models of: Biltmore*



POWERS*

Rebuild Kit

- Fits 900* series

JAG Part #: 18-250

OEM Reference #: 900-030*

Also proven to fit some models of: Biltmore*



POWERS*

Rebuild Kit

- Fits 800* series

JAG Part #: 18-251

OEM Reference #: 800-030*

Also proven to fit some models of: Biltmore*



SAYCO*

Stem Rebuild Kit

- Fits 2 handle compression stems

JAG Part #: 18-493



SYMMONS*

Washer and Gasket Kit

- Fits C-5* Safety Mix* Shower Systems

JAG Part #: 18-376

OEM Reference #: Kit-B*



SYMMONS*

Tub and Shower Spindle

- Solid Brass for shower Models T29A*, T29C* and T29B*

JAG Part #: 18-116

OEM Reference #: TA-10*



SYMMONS*

Seat Repair Kit

- Solid Brass fits TA-10*, Temptrol* Shower Systems

JAG Part #: 18-117

OEM Reference #: TA-4*, SI/3*



SYMMONS*

Washer Kit

- Solid Brass fits TA-10*, Temptrol* Shower Systems

JAG Part #: 18-118

OEM Reference #: TA-9*



SYMMONS*

Tub and Shower Cartridge

- Solid Brass fits C-5* Safety Mix* Shower Systems

JAG Part #: 18-119

OEM Reference #: C-5*



SYMMONS*

Washer Kit

- Fits C-5* Safety Mix* Shower Systems

JAG Part #: 18-375

OEM Reference #: KIT-BT-9*



TEMPRESS*

Stop Plus Kit

- Kit fits Danfoss, Grohe and Tempress

JAG Part #: 18-812

OEM Reference #:

Also proven to fit some models of: Danfoss*, Grohe*



TEMPRESS*

Tub and Shower Cartridge

- Cartridge for Tempress II* model faucets
- Also proven to fit some models of: Danfoss*, Grohe*

JAG Part #: 18-425

OEM Reference #: I-207*, NI-207*, 060013A, 062NI206, 062NI285, 1786-9000, 41031285, 4103128500, 4330569192240, 550140, 79719, B005F25KUI, B018HCFR6O, EV-6GKF-ROFM, LD-INYK-PW8X, QE10AA, QE-10AA, ULNE10AA, ULNE-10AA



TEMPRESS*

Pressure Balance Cartridge

- Cartridge for Tempress High Flow* model faucets
- Also proven to fit some models of: Danfoss*, Grohe*

JAG Part #: 18-788

OEM Reference #: T-11*, 47-157-000*



TEMPRESS*

Faucet Cartridge with Hemispheric Seal

- Cartridge for Tempress Modular* Cartridges
- Also proven to fit some models of: Rohl*, Newport Brass*, Brass-tech, Danfoss*, Grohe*

JAG Part #: 18-789

OEM Reference #: Tempress* II, 1793 9000*, NI-207*, 4115-0040*, I-207*



VALLEY*

Handle Extender

COLD

JAG Part #: 18-472

OEM Reference #: V5805*

HOT

JAG Part #: 18-471

OEM Reference #: V5806*



VALLEY*

Single Handle Cartridge with Brass Stem

JAG Part #: 18-786

OEM Reference #: VPI964*

JAG Part #: 18-787

OEM Reference #: VPI965*



VALLEY*

2-Handle Cartridge

- Roman Tub post October 1987

JAG Part #: 18-794

OEM Reference #: V6860*

Also proven to fit some models of: Eljer*



VALLEY*

Single Lever Cartridge with Seats

JAG Part #: 18-785

OEM Reference #: V6680*, VA-1*

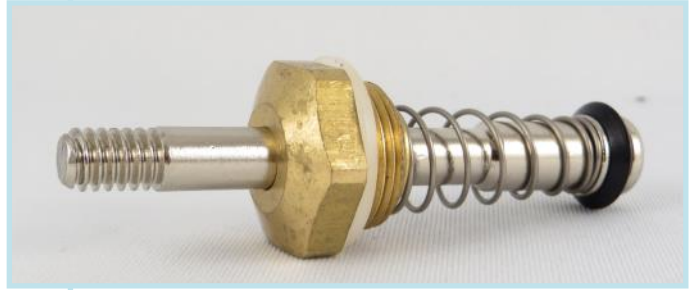


WALTEC*

Diverter Cartridge

JAG Part #: 18-458

OEM Reference #: 76305*; W-7*



WALTEC*

Diverter Cartridge

JAG Part #: 18-459

OEM Reference #: 76341*; W-8*



Waltec

Cartridge Fits WALTEC*

COLD

JAG Part #: 18-466

OEM Reference #: 76100*; W-1K*

HOT

JAG Part #: 18-467

OEM Reference #: 76101*; W-2K*



JAG Universal

Stop Re-Build Kit

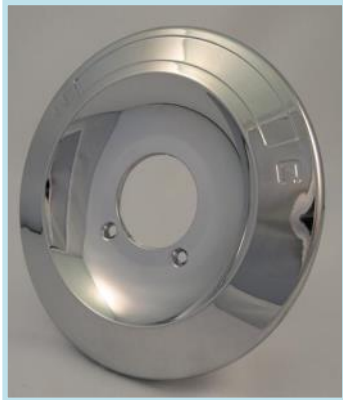
- Repairs R19 and R14 shut off valves

JAG Part #: 18-775

Also proven to fit some models of: BrassCraft*



Shower Escutcheons:



DELTA*

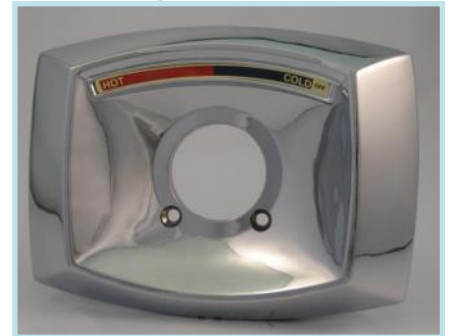
Shower Escutcheons for DELTA* Faucets

JAG Part #: 18-051

- 6-3/4" Diameter
- No Diverter
- Screws at 5 and 7 o'clock

JAG Part #: 18-055

- Rectangular Shape for Delta* Peerless* Scald Guard*
- No Diverter
- Screws at 5 and 7 o'clock



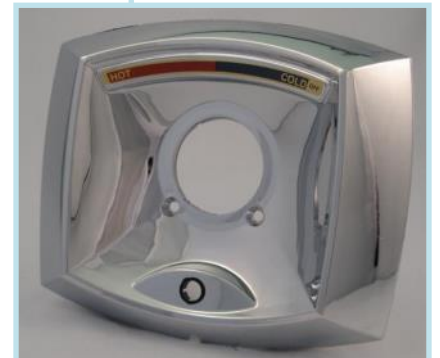
JAG Part #: 18-060

- Delta* Peerless* Push Button
- Central Diverter Hole
- Screws at 5 and 7 o'clock



JAG Part #: 18-061

- Delta* Peerless* Scald Guard*
- Central Diverter Hole
- Screws at 5 and 7 o'clock



MOEN*

Shower Escutcheons for MOEN* Faucets

JAG Part #: 18-052

- Flat 7" Diameter
- No Diverter
- Screws at 5 and 7 o'clock

JAG Part #: 18-053

- Recessed 7" Diameter
- No Diverter
- Screws at 5 and 7 o'clock

JAG Part #: 18-057

- Recessed 7" Diameter for Moentrol*
- Central Diverter Hole
- Screws at 2 and 7 o'clock

JAG Part #: 18-058

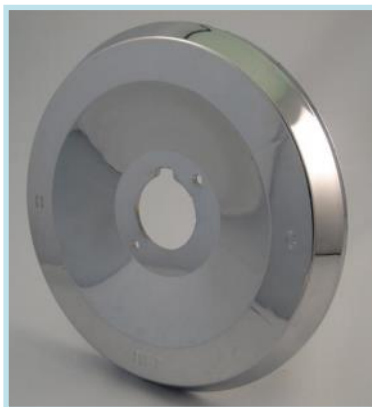
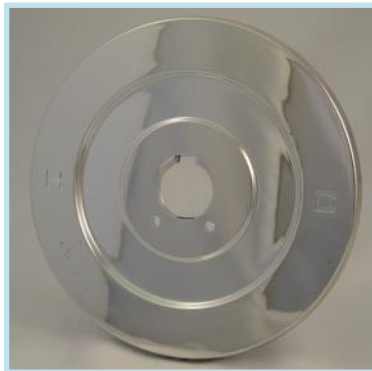
- Recessed 7" Diameter for Moentrol* with Seals
- Central Diverter Hole
- Screws at 2 and 7 o'clock

JAG Part #: 18-059

- 7" Diameter for Posi-Temp*
- No Diverter
- Screws at 2 and 7 o'clock

JAG Part #: 18-063

- 7" Diameter for Moentrol*
- Central Diverter Hole
- Screws at 5 and 7 o'clock



POWERS*

Escutcheon with Handle

- Square, Chrome, Smoked Acrylic Handle

JAG Part #: 18-238

OEM Reference #: 400-062*

Also proven to fit some models of: Biltmore*



SYMMONS*

Shower Escutcheons for SYMMONS*

JAG Part #: 18-054

OEM Reference #: T29A

- Diameter "A"
- Diverter Notch
- Screws at 3 and 9 o'clock



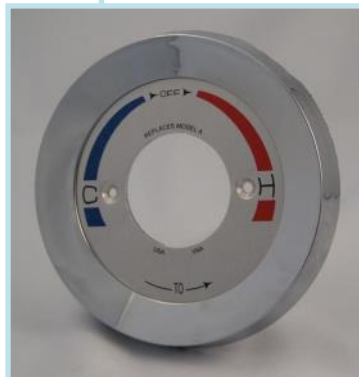
JAG Part #: 18-064

- Diameter "B"
- Diverter Notch
- Screws at 3 and 9 o'clock



JAG Part #: 18-056

- Diameter "C"
- No Diverter
- Screws at 3 and 9 o'clock



JAG Part #: 18-062

OEM Reference #: T19/T20

- Dome Escutcheon
- No Diverter



TEMPRESS II*

Escutcheon with Handle and Stem Extender Kit

CHROME

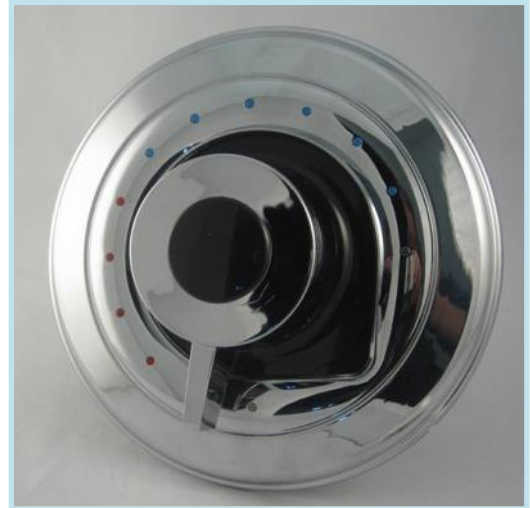
JAG Part #: 18-424

BRUSHED NICKEL

JAG Part #: 18-790

OEM Reference #: 1-207*

Also proven to fit some models of: Valley*, Grohe*



JAG Universal

Shower Escutcheon Screws

JAG Part #: 18-120

- 8/32 x 3"
- Oval, Phillips Head

JAG Part #: 18-121

- 10/24 x 3"
- Oval, Phillips Head



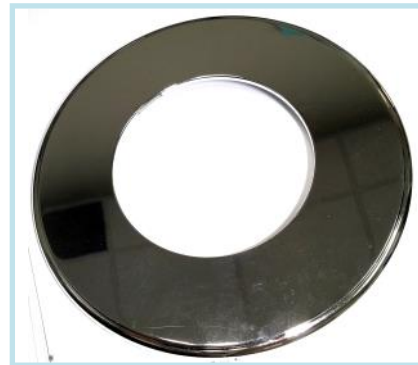
JAG Universal

Oversize Remodelling Plate for Tub Spout or Shower Arms

Tub or Shower Arms in Chrome 3.5" Diameter

JAG Part #: 18-792

- 3.5" Diameter

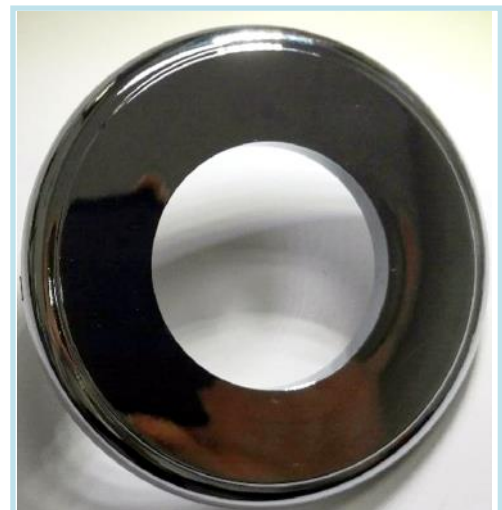


JAG Universal

Oversize Remodelling Plate for Tub and Shower Faucet / Escutcheon Trim

JAG Part #: 18-793

- 8" Diameter



Faucet Handles:

AMERICAN STANDARD*

Shower Handle

JAG Part #: 18-468

OEM Reference #: #068614-0020A*



DELTA*

Lever Handle for Monitor*

JAG Part #: 17-010

OEM Reference #: H-79



Canopy Handle for Monitor*

JAG Part #: 18-297



Canopy Handles for Delex*

JAG Part #: 18-301

OEM Reference #: RP196602*



DELTA*

Crystal Round Shower Handle

JAG Part #: 18-290

OEM Reference #: RP2391*



Shower Handle for Scald Guard*, Monitor*

JAG Part #: 18-293

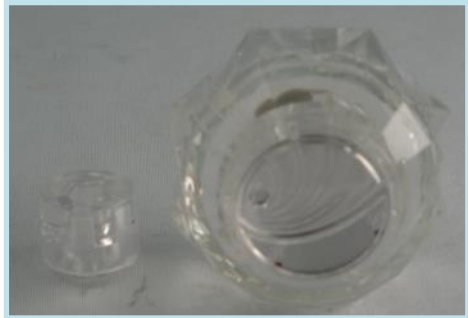
OEM Reference #: RP2392*



Round Lavatory Handle

JAG Part #: 18-291

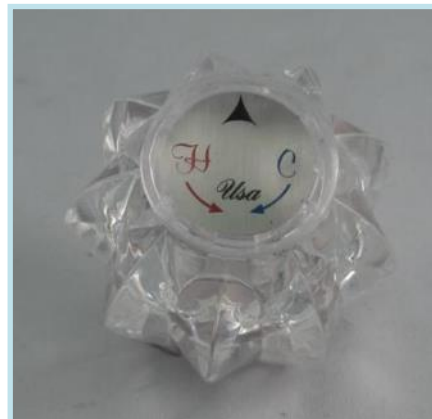
OEM Reference #: RP2389*



Shower Handle for Peerless*

JAG Part #: 18-295

OEM Reference #: RP1619*



DELTA*

Cap for Round Handle

JAG Part #: 18-292

OEM Reference #: RP1744C*, RP212*



Cap for ScaldGuard*, Monitor* Handle

JAG Part #: 18-294

OEM Reference #: RP8442*, RP1904*, RP1991*, RP3550*



Crystal Shower Handle for Peerless*

JAG Part #: 18-296

OEM Reference #: RP4233*



Pair of Caps for Peerless*

JAG Part #: 18-303

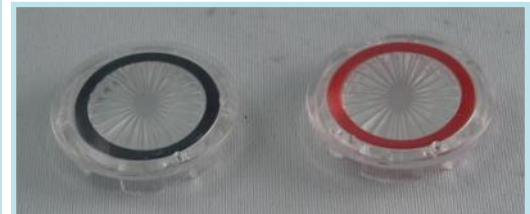
OEM Reference #: RP18373*



Pair of Caps for Delex*

JAG Part #: 18-300

OEM Reference #: RP18373*



DELTA*

Pair Handles for Delex* & Imports

JAG Part #: 18-299



DELTA*

Pair Handles for Peerless*

JAG Part #: 18-302



JAG Universal

Pair of Chrome Handles with Adapters fit Moen* and Delta*

JAG Part #: 17-170

OEM Reference #: Foundation* ref# B2891 ILF, Monticello and Brantford* ref #6610



DELTA*

Handle Cartridge Extender for Delex*

JAG Part #: 18-304

OEM Reference #: RP12631



DELTA*

Handle Adapter for Delex*

JAG Part #: 18-298



DELTA*

Shower Handle

- Delta* Monitor* Scald Guard*

OEM Reference #: D054A*, D030A*

JAG Part #: 18-510

- Brushed Nickel

JAG Part #: 18-511

- Chrome

JAG Part #: 18-512

- Acrylic Clear

JAG Part #: 18-513

- Oil Rubbed Bronze

JAG Part #: 18-514

- Smoke Acrylic

JAG Part #: 18-515

- Polished Brass



DELTA*

Shower Handle

- Delta* Screw Cap for #212* Ball

OEM Reference #: D010SS*, 212*

JAG Part #: 18-516

- Brushed Nickel

JAG Part #: 18-517

- Chrome

JAG Part #: 18-518

- Clear Acrylic

JAG Part #: 18-519

- Oil Rubbed Bronze

JAG Part #: 18-520

- Smoke Acrylic

JAG Part #: 18-521

- Polished Brass



EMCO*

FAUCET HANDLES

COLD/BLUE

JAG Part #: 17-743



HOT/RED

JAG Part #: 17-742



EMCO*

Replacement Pair Handles (Small Metal)

JAG Part #: 18-443



EMCO*

Replacement Pair Handles (Large Metal)

JAG Part #: 18-445



EMCO*

Replacement for Diverter Handle (Metal)

JAG Part #: 18-444



DELTA* GROHE*

Shower Handle with Adapters

OEM Reference #: D054A*, D030A*, D010SS*, M054A*, M004A*, T054FS*

Also Proven to Fit: Delta*. Monitor*, Moen* Posi-Temp*, Tempress II*,

JAG Part #: 18-483

- Brushed Nickel

JAG Part #: 18-484

- Chrome

JAG Part #: 18-485

- Clear Acrylic

JAG Part #: 18-486

- Oil Rubbed Bronze

JAG Part #: 18-487

- Polished Brass

JAG Part #: 18-488

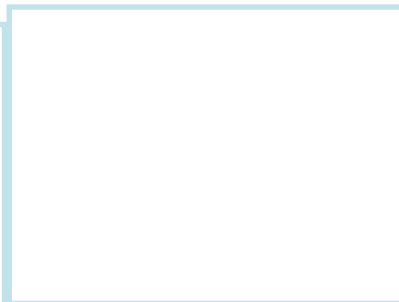
- Smoked Acrylic



**MIXET
Handle**

JAG Part #: 18-475

OEM Reference #: MLF-7*; MS-5AT-C*



MOEN

Crystal Tear Drop Lavatory Handles

JAG Part #: 18-272

OEM Reference #: 96791*

JAG Part #: 18-273

OEM Reference #: 96797*

JAG Part #: 18-284

OEM Reference #: 96884*



MOEN

Crystal Round Lavatory Handle for Moen

JAG Part #: 18-275

OEM Reference #: 13092*

JAG Part #: 18-276

OEM Reference #: 13094*



MOEN

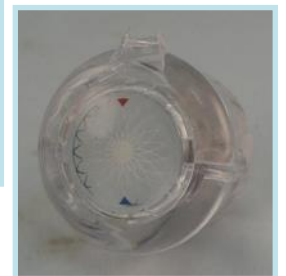
Crystal New Style Round Lavatory

JAG Part #: 18-278

OEM Reference #: 13042*

JAG Part #: 18-279

OEM Reference #: 13094*



MOEN

Lever Shower Handle for Commercial Faucets

JAG Part #: 18-281



MOEN

Lever Kitchen Handle

JAG Part #: 18-282

OEM Reference #: 96789*, 96790*



MOEN

Lever Shower Handle for Posi-Temp

JAG Part #: 18-285

OEM Reference #: 14732*



MOEN

Crystal Round Handles (Pair)

JAG Part #: 18-286

OEM Reference #: 91067*



MOEN

Two Handle Adapter Kit

JAG Part #: 18-287

OEM Reference #: 97556*



MOEN

Kitchen Handle Pivot Repair Kit

JAG Part #: 18-288

OEM Reference #: 101310*



MOEN* POSI-TEMP*

Shower Handle with Adapters

OEM Reference #: M054A*

JAG Part #: 18-522

- Brushed Nickel

JAG Part #: 18-523

- Chrome

JAG Part #: 18-524

- Clear Acrylic

JAG Part #: 18-525

- Oil Rubbed Bronze

JAG Part #: 18-526

- Polished Brass

JAG Part #: 18-482

- Smoked Acrylic



JAG UNIVERSAL

Combination Handle

4.25" Handle with Adapters to fit a number of OEM Brands including:
Delta*, Moen*, Grohe* and Tempres*

JAG Part #: 18-489

OEM Reference #: D054A*, D030A*, D010SS*, M054A*, M004A*,
T054FS*

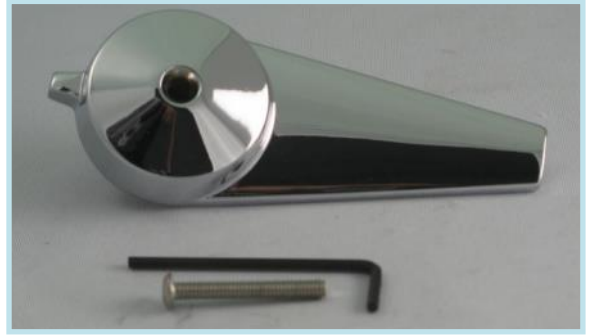
POWERS*

Shower Lever Handle

JAG Part #: 18-246

OEM Reference #: 420-495*

Also Fits: Biltmore



POWERS*

Shower Lever Handle with broach adapters

JAG Part #: 18-247

OEM Reference #: 800-036* , 900-070*

Also Fits: Biltmore



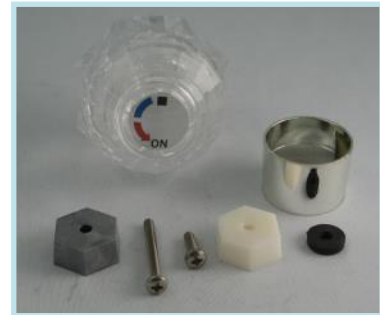
POWERS*

Round Shower Handle with cap and screws

JAG Part #: 18-248

OEM Reference #: 800-200* , 800-035*

Also Fits: Biltmore

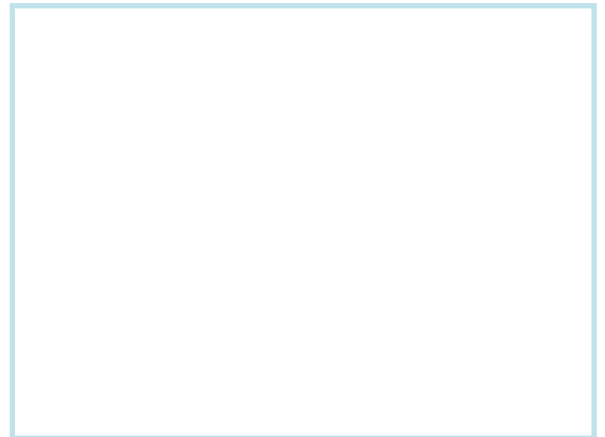


POWERS*

Die Cast Combination Handle (Vandal Proof)

JAG Part #: 18-490

Also Fits: Delta* and Symmons*



SAYCO*

Round Handle

JAG Part #: 18-283

OEM Reference #: PI070*



SYMMONS*

Tri-Canopy Handle

JAG Part #: 18-305

OEM Reference #: T-31*



SYMMONS*

Diverter Lever Handle

JAG Part #: 18-306

OEM Reference #: T-30*



SYMMONS*

Round Handle

JAG Part #: 18-307



SYMMONS*

Lever Canopy Handle

JAG Part #: 18-308

OEM Reference #: TS-65*



JAG UNIVERSAL

Shower Handle with Adapters

3" Handle with Adapters to fit a selection of OEM Brands: Delta*, Delta* Monitor*, Mone* Positemp* and Tempres II*

OEM Reference #: D054A*, D030A*, D010SS*, M054A*, M004A*, T054FS*

JAG Part #: 18-483

- Brushed Nickel

JAG Part #: 18-484

- Chrome

JAG Part #: 18-485

- Clear Acrylic

JAG Part #: 18-486

- Oil Rubbed Bronze

JAG Part #: 18-487

- Polished Brass

JAG Part #: 18-488

- Smoked Acrylic



VALLEY*

Round Clear Acrylic

JAG Part #: 18-628



VALLEY*

Round Clear Acrylic Handles (Pair)

JAG Part #: 18-629



WALTEC*

Metal 2 Handle Lavatory or Shower Handles

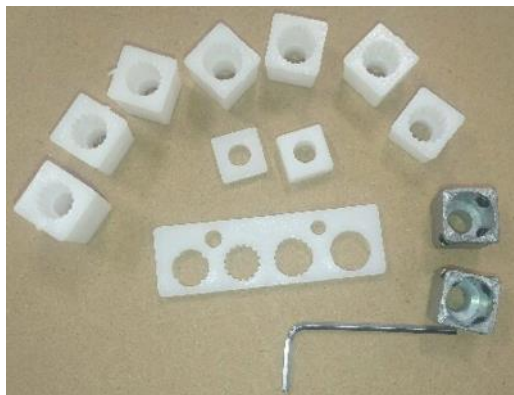
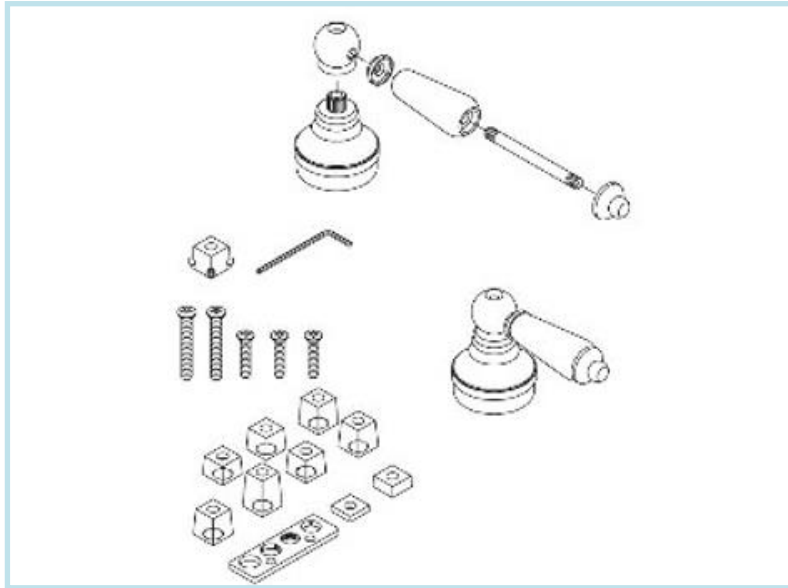
JAG Part #: 18-446



**JAG Universal
Universal Handle (Pair)**

Includes 14 Adapters to fit Most Faucets

JAG Part #: 17-005



Washers, O-Ring, Gasket Sets:

JAG Universal O-Ring Assortment Kit

Complete with 14 common Trade Sizes (120 Pieces)
Trade Sizes #108-#17PC for any Household Applications

JAG Part #: 18-113



JAG Universal Soft Bibb Washer Assortment Kit

Complete with 14 common Trade Sizes (110 Pieces)
Trade Sizes 00-1/2 for any Household Applications, Low Torque, Weak-
ness Applications

JAG Part #: 18-110



JAG Universal Standard Bibb Washer Assortment Kit

Complete with 14 common Trade Sizes (110 Pieces)
Trade Sizes 00-1/2 for any Red Heavy Duty, Commercial, High Torque
Applications

JAG Part #: 18-111



JAG Universal
Hard Bibb Washer Assortment Kit

Complete with 14 common Trade Sizes (110 Pieces)
Trade Sizes 00-1/2 for any Heavy Duty, High Torque and Medical Applications

JAG Part #: 18-112



JAG Universal
Cap Thread Gasket Assortment Kit

Complete with 14 common Trade Sizes (140 Pieces)
Cork, Rubber and Plastic Materials for a Variety of Applications

JAG Part #: 18-344



Toilet:

Ball Cock Repair

Flappers

Levers

Page

Cartridges

Page

Ball Cock Repair:

AMERICAN STANDARD* Ballcock Repair Kits

JAG Part #: 18-028

OEM Reference #: 012018-0070A*

JAG Part #: 18-029

OEM Reference #: 047243-0070A*



COAST*

Ball Cock Repair Kits

JAG Part #: 18-035

OEM Reference #: IB1*, IB1P*, 55014*

JAG Part #: 18-040

OEM Reference #: Mark III*, 55214*

JAG Part #: 18-041

OEM Reference #: IB1A*

JAG Part #: 18-042

OEM Reference #: IB1A*

JAG Part #: 18-043

OEM Reference #: Mark II*, 55074*

JAG Part #: 18-044

OEM Reference #: IB1X*, 55214*

JAG Part #: 18-045

OEM Reference #: Mark IV*, 55214*



COAST*

Ballcock Repair Assemblies

JAG Part #: 18-036

OEM Reference #: 71666*

JAG Part #: 18-037

OEM Reference #: 71736*



CRANE*

Ballcock Diaphragm Assemblies and Repair Kits

JAG Part #: 18-032

Diaphragm

JAG Part #: 18-033

Plunger

JAG Part #: 18-034

Repair

OEM Reference #: F12975 & F13259



Fill, Flush Valves, Flappers, Gaskets:

JAG Universal

IBIX* Replacement Fill Valve

JAG Part #: 14-101

OEM Reference #: IBIX

Repair Kit for 14-101

JAG Part #: 14-108

OEM Reference #: IBIX



JAG Universal

Water Control Valves

Anti-Siphon snap action shut off, efficient operation at any water pressure. Complete with coupling and flange nuts and 7" refill tube. Available in 2 heights:

8" Height

JAG Part #: 14-102

10" Height

JAG Part #: 14-103

Repair Kit for 14-102/14-103

JAG Part #: 18-423

OEM Reference #: 47078*



Fill, Flush Valves, Flappers, Gaskets: Fits American Standard*

AMERICAN STANDARD*

2" Flapper with Float

JAG Part #: 17-129

OEM Reference #: 7381129-0070A



AMERICAN STANDARD*

Actuating Units

Low Profile

JAG Part #: 18-008

OEM Reference #: #5*, 33642.07*

High Profile

JAG Part #: 18-009

OEM Reference #: #5*, 33642.07*

High Profile with Disc

JAG Part #: 18-010

OEM Reference #: #6*, 738807.07*

Low Profile

JAG Part #: 18-025

OEM Reference #: 33582.07UA*



AMERICAN STANDARD*
Actuator with Leg Stand

JAG Part #: 18-023
OEM Reference #: AS-101, #4* Series, 8162.07*



AMERICAN STANDARD*
Ballcock Repair Kit

JAG Part #: 18-027
OEM Reference #: 11372.08*



AMERICAN STANDARD*
Low Boy Flush Valve

JAG Part #: 18-048
OEM Reference #: 47107.0070A



AMERICAN STANDARD*
Telescopic Flush Valve

JAG Part #: 18-209
OEM Reference #: 047089.0070A



AMERICAN STANDARD*

Actuator Discs

Snap On, Short Ribs

JAG Part #: 18-011

OEM Reference #: 33643.0020A*



Snap On, Long Ribs

JAG Part #: 18-012

OEM Reference #: 33643.0020A*



Screw on, Short Ribs

JAG Part #: 18-015

OEM Reference #: 73383.02*



Screw on, Long Ribs

JAG Part #: 18-016

OEM Reference #: 73383.07*



Screw on or Snap in

JAG Part #: 18-019

OEM Reference #: 73383.07*



Screw in or Snap on for AS-104

JAG Part #: 18-020

OEM Reference #: 73383.07*



AMERICAN STANDARD*

Flapper Seals

Cadet III

JAG Part #: 18-391

OEM Reference #: 738920-0070A*

Champion IV

JAG Part #: 18-392

OEM Reference #: 7301111-0070A*

3" Jumbo Canister

JAG Part #: 18-393

OEM Reference #: Certain Flush*

Also Proven to Fit: Crane* Sure Seal*

3" Champion

JAG Part #: 18-026

OEM Reference #: 738651-0070A*



AMERICAN STANDARD*

Flapper with Integral Adjustable Float

JAG Part #: 18-432

Also Proven to Fit: Duravit*, St Thomas Creations*, Villeroy and Boch*



AMERICAN STANDARD

Time Rate* Flapper with Float

JAG Part #: 18-080

OEM Reference #: 738159-0070A*



AMERICAN STANDARD*

3" Flapper

JAG Part #: 18-222

OEM Reference #: 1818K* , 20130806*



CRANE*

2" Flapper

With Foam Insert

JAG Part #: 18-067



COAST*

2" Flapper

JAG Part #: 18-221

OEM Reference #: 53366*



ELJER*

3" Flapper TITAN 3

JAG Part #: 18-091

OEM Reference #: 495-6077-00*



ELJER*

2" Plastic Flapper

JAG Part #: 18-770

OEM Reference #: 495-6029-00*



ELJER*

2" Vinyl Flapper

JAG Part #: 18-771

OEM Reference #: 495-6072-00*



ELJER*

Counter Balance Plastic Flapper

JAG Part #: 18-798

OEM Reference #: 495-5528-00

Also Fits: Briggs, Coast



Fill, Flush Valves, Flappers, Gaskets: Fits Kohler*

KOHLER*
“Low Boy” Fill Valve

JAG Part #: 18-312



KOHLER*
Piston Kit

JAG Part #: 18-100
OEM Reference #: 51748*, 51250*



KOHLER*
Ballcock Float Assembly

JAG Part #: 18-101
OEM Reference #: 84499*



KOHLER*
2” Rigid Flapper

JAG Part #: 18-075
OEM Reference #: 55477*, 53316*, 738003-300*
Also Fits: Coast*



KOHLER*

2" Flapper with Foam Insert

JAG Part #: 18-069

OEM Reference #: 83064*, GP83064*



KOHLER*

2" Flat Flapper with Foam Insert and Float

JAG Part #: 18-073

OEM Reference #: 81217*, 738071-0070A*, 53356*, 53316*,



KOHLER*

2" Flapper with T-Back

JAG Part #: 18-076

OEM Reference #: GP84995*



KOHLER*

2" Flapper "Shark Fin"

JAG Part #: 18-077

OEM Reference #: GP84138*. GPI078440*



KOHLER*

3" Flapper for Class Five*

JAG Part #: 18-093

OEM Reference #: GPI078441*

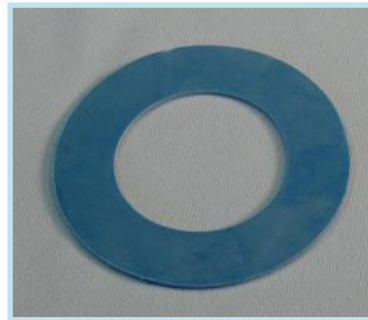


KOHLER*

Flush Valve Seal

JAG Part #: 18-074

OEM Reference #: 81217*, 738071-0070A*, 53356*, 53316*, 71706*



KOHLER*

Seal for Class Five*

JAG Part #: 18-395

OEM Reference #: 1097686*



KOHLER*

Full Ballcock and Fill Valve Kit

Includes IBIX*

JAG Part #: 18-359

OEM Reference #: 84499*



KOHLER*

Flush Valve with mounting lugs

Old Style Rialto

JAG Part #: 18-385

OEM Reference #: 83650*



KOHLER*

Flush Valve with mounting darts

New Style Rialto

JAG Part #: 18-387

OEM Reference #: 83095*



KOHLER*

3" Flush Valve for 2-piece Toilets

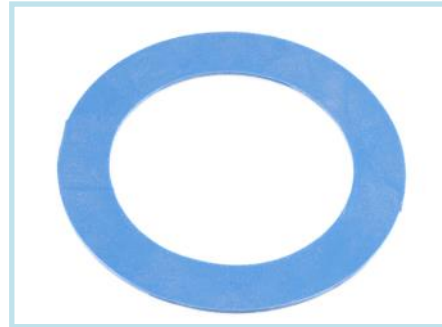
JAG Part #: 18-396



Fill, Flush Valves, Flappers, Gaskets: Fits Mansfield*

MANSFIELD*
Flush Valve Gasket

JAG Part #: 18-772
OEM Reference #: 741-0009*



MANSFIELD*
3" Flapper

JAG Part #: 18-094
OEM Reference #: 630-02060*



MANSFIELD*
Flush Valve

JAG Part #: 18-600
OEM Reference #: #211



Fill, Flush Valves, Flappers, Gaskets: Fits Toto*

TOTO*
3" Flapper

JAG Part #: 18-090
OEM Reference #: THU140S



TOTO*
3" Flapper "G-Max"

JAG Part #: 18-095
OEM Reference #: THU175S*



TOTO*
2" Flapper

JAG Part #: 18-558
OEM Reference #: THU303*



Fill, Flush Valves, Flappers, Gaskets: Fits Vortens*

VORTENS* Flush Valve Seal

JAG Part #: 18-394
Also Fits: Pegasus, Caroma, Imports



VORTENS* Push Button Dual Flush Valve

JAG Part #: 18-607
OEM Reference #: V181*
Also Fits: Imports



VORTENS* Side Lever Dual Flush Valve

JAG Part #: 18-608
OEM Reference #: V221*
Also Fits: Imports



JAG Universal
2" Yellow Flapper with Trunyon

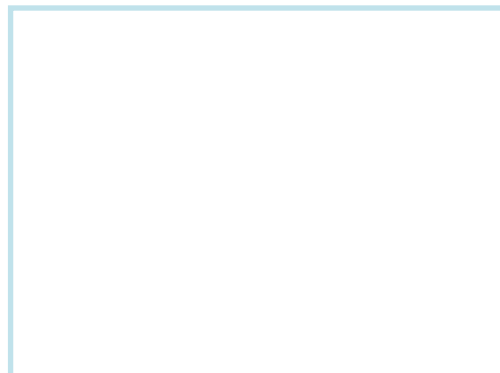
JAG Part #: 18-766



JAG Universal
2" Extra Soft Yellow Flappers

Extra Flexible Durometer

JAG Part #: 17-221



JAG Universal
2" Vinyl Flapper with Baffles

JAG Part #: 18-224

OEM Reference #: 23466*, 53506*, 53516*, 53526*



JAG Universal
2" Vinyl Flapper with Molded Strap

JAG Part #: 18-430



**JAG Universal
Standard 2" Flush Valve**

JAG Part #: 14-104



**JAG Universal
Telescoping 2" Flush Valve**

JAG Part #: 18-098



**JAG Universal
Toilet Tank Ballcock Repair Kit**

JAG Part #: 18-205



**JAG Universal
Flush Valve Converts from 2" to 3" Flapper**

JAG Part #: 18-398



JAG Universal

3” Flush Valve for 1 piece Toilets

JAG Part #: 18-399



JAG Universal

Flush Valve Converts from 2” to 3” Flapper for 1 Piece Toilets

JAG Part #: 18-400



Toilet Levers:

AMERICAN STANDARD*
Metal Toilet Tank Lever

- 4.5 inch Arm

JAG Part #: 14-805

OEM Reference #: 47048-0020A



AMERICAN STANDARD*
Metal Toilet Tank Lever

- 6.125 inch Arm

JAG Part #: 14-806

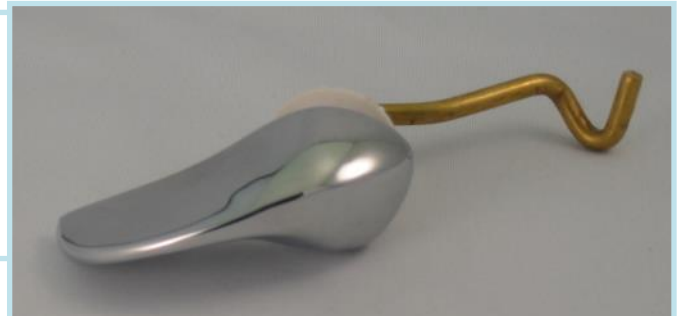
OEM Reference #: 47048-0020A



AMERICAN STANDARD*
Metal Toilet Tank Lever

JAG Part #: 14-807

OEM Reference #: 738473-0020A



AMERICAN STANDARD*
Metal Pressure Assist Toilet Tank Lever Kit

JAG Part #: 14-808

OEM Reference #: 738254-0020A



AMERICAN STANDARD*
Metal Toilet Tank Lever

JAG Part #: 14-820
OEM Reference #: 738772-0020A



AMERICAN STANDARD*
Metal Toilet Tank Lever

JAG Part #: 14-809
OEM Reference #: 738153-0020A



AMERICAN STANDARD*
Toilet Tank Lever

JAG Part #: 14-821
OEM Reference #: 738903-0020A



AMERICAN STANDARD*
Toilet Tank Lever: 30°, 6" Arm

OEM Reference #: 047192*

White

JAG Part #: 18-447

Chrome

JAG Part #: 18-448

Bone

JAG Part #: 18-449



AMERICAN STANDARD*

Toilet Tank Lever: 45°, 6" Arm

OEM Reference #: 047242*

White

JAG Part #: 18-450

Chrome

JAG Part #: 18-451

Bone

JAG Part #: 18-452



AMERICAN STANDARD*

Toilet Tank Lever: 5°, 6" Arm

OEM Reference #: 047148-XXXXA

White

JAG Part #: 18-584

Chrome

JAG Part #: 18-585

Bone

JAG Part #: 18-621



AMERICAN STANDARD*

Toilet Tank Lever: 15°, 6" Arm

OEM Reference #: 4063.XXXAX

WHITE

JAG Part #: 18-622

CHROME

JAG Part #: 18-623

BONE

JAG Part #: 18-624



AMERICAN STANDARD*

Toilet Tank Lever: 5°, 4" Arm

WHITE

JAG Part #: 18-603

CHROME

JAG Part #: 18-604



AMERICAN STANDARD*

Toilet Tank Lever: 45°, 4" Arm

White

JAG Part #: 18-625

CHROME

JAG Part #: 18-626

BONE

JAG Part #: 18-627



AMERICAN STANDARD*

Toilet Tank Lever for 8098* Model, Metal

OEM Reference #: 738899-0200A

8098* Model

White

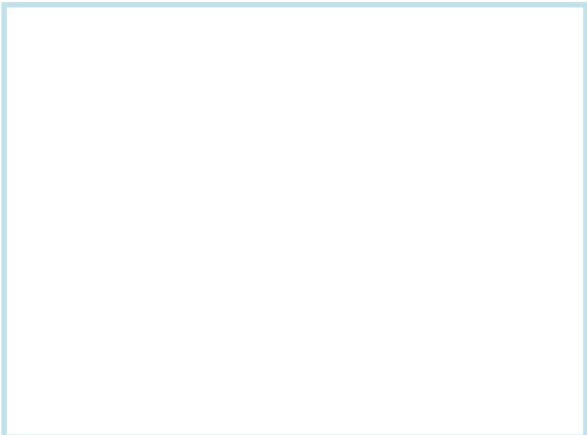
JAG Part #: 18-808

Chrome

JAG Part #: 18-809

Polished Brass

JAG Part #: 18-810



ELJER*

Metal Tank Lever

OEM Reference #: 495-2704

Chrome

JAG Part #: 14-803

Polished Brass

JAG Part #: 14-825



ELJER*

Flush Arm Assembly with Float Ball

JAG Part #: 18-046

OEM Reference #: 490-6512-00



ELJER*

Touch Flush Lower Arm Assembly

JAG Part #: 18-049

OEM Reference #: 495-6058-00



ELJER*

Touch Flush Upper Arm Assembly

JAG Part #: 18-050

OEM Reference #: 490-6200-00

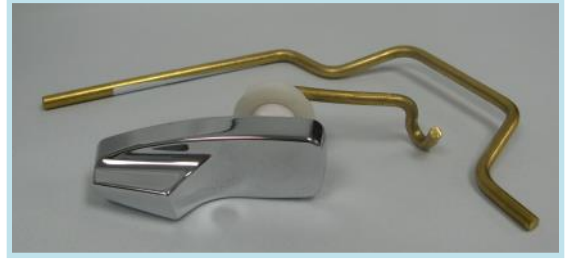


GERBER*

Metal Toilet Tank Lever Assembly

JAG Part #: 14-810

OEM Reference #: 99-571-KT



KOHLER*

Metal Handle, Plastic Arm Lever

OEM Reference #: K9404

Chrome

JAG Part #: 14-804

Polished Brass

JAG Part #: 14-824



KOHLER*

Metal Tank Lever

JAG Part #: 18-408

OEM Reference #: Rialto #81609



KOHLER*

Metal Tank Lever

JAG Part #: 18-875

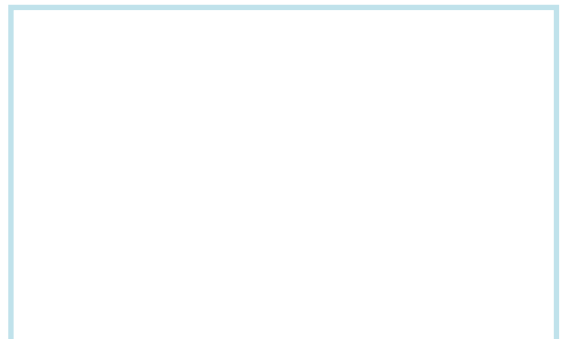
OEM Reference #: Rialto



KOHLER*

Metal Tank Lever

JAG Part #: 18-431



MANSFIELD*

Metal Toilet Tank Lever

JAG Part #: 14-826

OEM Reference #: M42*



MANSFIELD*

Plastic Toilet Tank Lever

JAG Part #: 14-827

OEM Reference #: 40CHP*



TOTO*

Metal Toilet Tank Lever

OEM Reference #: THU004

Chrome

JAG Part #: 14-811

Oil Rubbed Bronze

JAG Part #: 14-812

Satin Nickel

JAG Part #: 14-813



TOTO*

Metal Toilet Tank Lever

OEM Reference #: THU061

Chrome

JAG Part #: 14-814

Oil Rubbed Bronze

JAG Part #: 14-815

Satin Nickel

JAG Part #: 14-816



TOTO*

Metal Toilet Tank Lever

OEM Reference #: THU068

Chrome

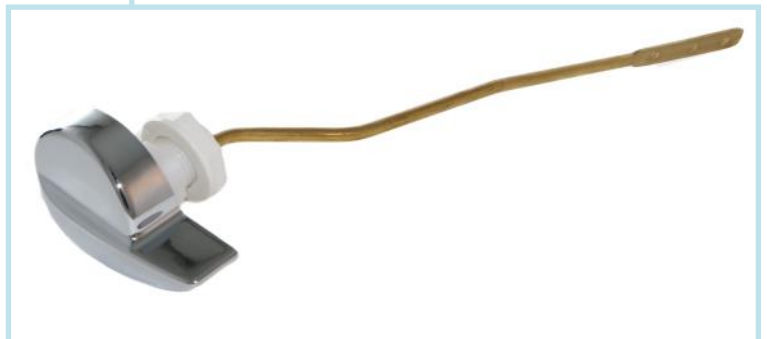
JAG Part #: 14-817

Oil Rubbed Bronze

JAG Part #: 14-818

Satin Nickel

JAG Part #: 14-819



TOTO*

Plastic Toilet Tank Lever

OEM Reference #: THU146*

Chrome

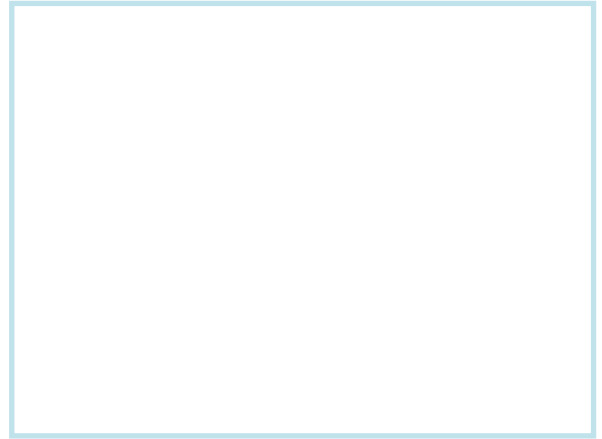
JAG Part #: 14-887

Satin Nickel

JAG Part #: 14-888

Polished Brass

JAG Part #: 14-893



TOTO*

Premium Metal Toilet Tank Lever

OEM Reference #: THU 141

Colour #01 - Cotton White

JAG Part #: 14-901

Colour #03 - Bone

JAG Part #: 14-902

Colour #11 - Colonial White

JAG Part #: 14-903

Colour #12 - Sedona Beige

JAG Part #: 14-904

Colour #51 - Chrome and Ebony Ceramic Insert

JAG Part #: 14-905

Colour #BN - Brushed Nickel

JAG Part #: 14-906

Colour #PN - Polished Nickel

JAG Part #: 14-907

Colour #RB - Oil Rubbed Bronze

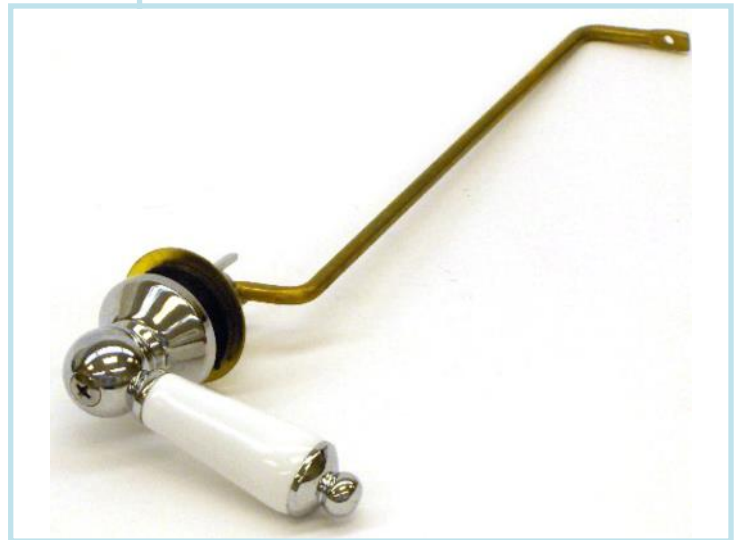
JAG Part #: 14-908

Colour #SB - Satin Bronze

JAG Part #: 14-909

Colour #CP - Chrome for 141N

JAG Part #: 14-910



TOTO*

Premium Metal Toilet Tank Lever

OEM Reference #: THU 148

Colour #01 - Cotton White

JAG Part #: 14-911

Colour #03 - Bone

JAG Part #: 14-912

Colour #11 - Colonial White

JAG Part #: 14-913

Colour #12 - Sedona Beige

JAG Part #: 14-914

Colour #51 - Chrome and Ebony Ceramic Insert

JAG Part #: 14-915

Colour #BN - Brushed Nickel

JAG Part #: 14-916

Colour #CP - Chrome

JAG Part #: 14-917

Colour #PB - Polished Brass

JAG Part #: 14-918

Colour #RB - Oil Rubbed Bronze

JAG Part #: 14-919

Colour #SB - Satin Brass

JAG Part #: 14-920



TOTO*

Premium Metal Toilet Tank Lever

OEM Reference #: THU 164

Colour #BN - Brushed Nickel

JAG Part #: 14-921

Colour #CP - Chrome

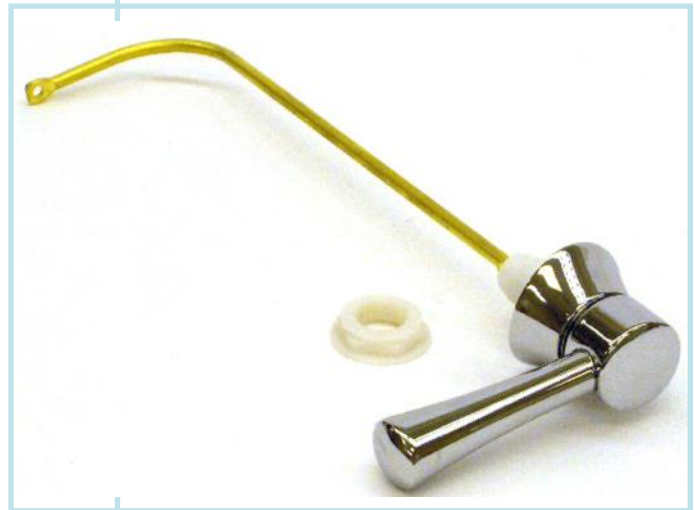
JAG Part #: 14-922

Colour #PB - Polished Brass

JAG Part #: 14-923

Colour #PN - Polished Nickel

JAG Part #: 14-924



TOTO*

Premium Metal Toilet Tank Lever

OEM Reference #: THU 191

Colour #BN - Brushed Nickel

JAG Part #: 14-925

Colour #CP - Chrome

JAG Part #: 14-926

Colour #PB - Polished Brass

JAG Part #: 14-927

Colour #PN - Polished Nickel

JAG Part #: 14-928



UNIVERSAL RUNDLE*

Metal Toilet Tank Lever

JAG Part #: 14-828

OEM Reference #: UR31 I



VORTENS*

Plastic Toilet Tank Lever

OEM Reference #: V189*

JAG Part #: 18-612

Also Fits: Imports



VORTENS*

Metal Toilet Tank Lever

OEM Reference #: V227*

JAG Part #: 18-613 (A.k.A 22-227)



VORTENS*

Plastic Toilet Tank Lever

OEM Reference #: V-191 (Vienna)

White

JAG Part #: 18-611

Chrome

JAG Part #: 18-811



VORTENS*

Plastic Toilet Tank Lever

OEM Reference #: VORTENS model V-189 with Metal Screw in the arm

JAG Part #: 22-189

Also Fits: Imports



JAG Universal

FIT-ALL BENDABLE TANK LEVER - PLASTIC

Classic Triangle Handle, Plastic Arm

Cut to Fit, Bend as required

JAG Part #: 14-001

- White

JAG Part #: 14-002

- Chrome

*Special Orders can be placed for Unique Colours in quantities:

JAG Part #: 14-201

- Bone

JAG Part #: 14-202

- Gray

JAG Part #: 14-203

- Antique White

JAG Part #: 14-204

- Satin Nickel

JAG Part #: 14-205

- Polished Brass



JAG Universal

FIT-ALL BENDABLE TANK LEVER - METAL

Classic Triangle Handle, Metal Arm

Cut to Fit, Bend as required

*Special Orders can be placed for Unique Colours in quantities

JAG Part #: 14-003

- White

JAG Part #: 14-004

- Chrome



JAG Universal
FIT-ALL BENDABLE TANK LEVER - PLASTIC

Modern Elite Handle, Plastic Arm
Cut to Fit, Bend as required

*Special Orders can be placed for Unique Colours in quantities

JAG Part #: 14-005

- White

JAG Part #: 14-006

- Chrome

JAG Part #: 14-010

- Oil Rubbed Bronze

JAG Part #: 14-011

- Satin Nickel



JAG Universal
FIT-ALL BENDABLE TANK LEVER - METAL

Modern Elite Handle, Metal Arm
Cut to Fit, Bend as required

*Special Orders can be placed for Unique Colours in quantities

JAG Part #: 14-007

- White

JAG Part #: 14-008

- Chrome

JAG Part #: 14-012

- Oil Rubbed Bronze

JAG Part #: 14-013

- Satin Nickel



JAG Universal

3 Way Metal Toilet Tank Lever

Classic Handle

Fits Most Toilets - Front Right, Side and Corner Placement

JAG Part #: 14-303

- Chrome

JAG Part #: 14-304

- Polished Brass

JAG Part #: 14-305

- Satin Nickel

JAG Part #: 14-306

- Oil Rubbed Bronze



JAG Universal

4 Way Metal Toilet Tank Lever

Classic Handle

Fits Most Toilets - Front Right, Front Left, Side and Corner Placement

JAG Part #: 14-401

- White

JAG Part #: 14-402

- Bone

JAG Part #: 14-403

- Chrome

JAG Part #: 14-404

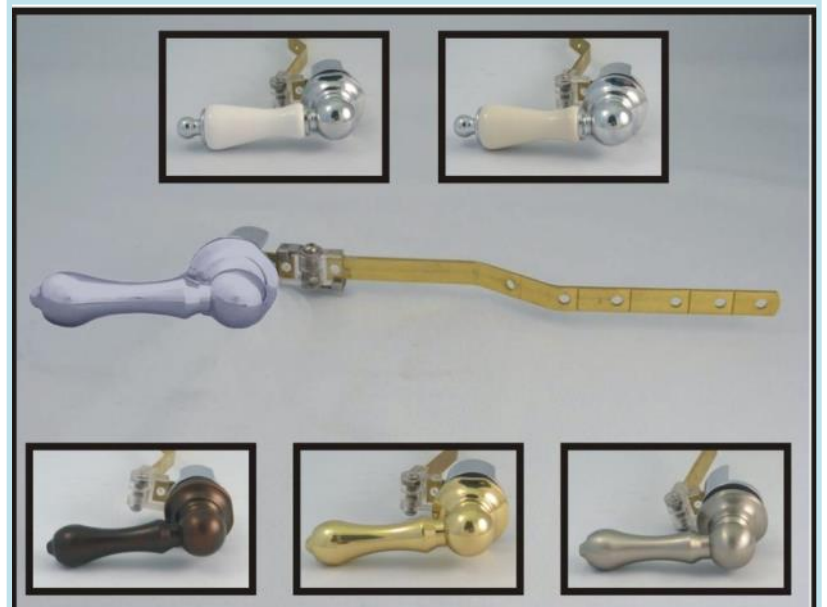
- Polished Brass

JAG Part #: 14-405

- Satin Nickel

JAG Part #: 14-406

- Oil Rubbed Bronze



JAG Universal

4 Way Metal Toilet Tank Lever

Modern Handle

Fits Most Toilets - Front Right, Front Left, Side and Corner Placement

JAG Part #: 14-407

- Chrome

JAG Part #: 14-408

- Polished Brass

JAG Part #: 14-409

- Satin Nickel

JAG Part #: 14-410

- Oil Rubbed Bronze



JAG Universal

Heavy Duty Universal Toilet Tank Lever

All Metal; Chrome Handle Only

JAG Part #: 14-834



JAG Universal

Universal Side Mount - Orion Style

JAG Part #: 14-801

- Chrome

JAG Part #: 14-830

- Bone

JAG Part #: 14-831

- White



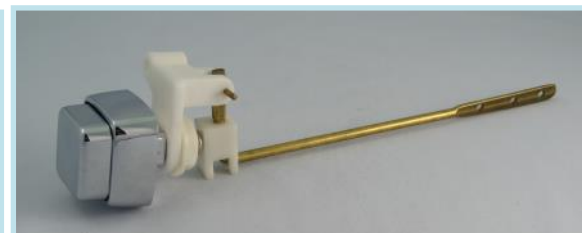
**JAG Universal
Extra Heavy Duty Universal Front Mount**

JAG Part #: 14-802



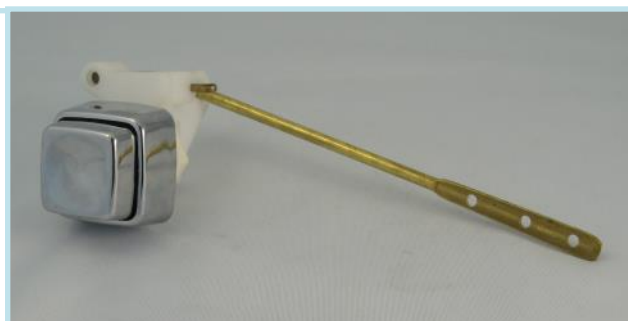
**JAG Universal
Heavy Duty Universal Side Mount Push Button**

JAG Part #: 14-822



**JAG Universal
Heavy Duty Universal Front Mount
Push Button**

JAG Part #: 14-823



**JAG Universal
General Purpose Universal Metal Tank Lever**

JAG Part #: 14-829



**JAG Universal
Heavy Duty Universal Toilet Tank Lever**

8" Arm

JAG Part #: 14-832

10" Arm

JAG Part #: 14-833



JAG Universal
Side Mount Push Button Lever

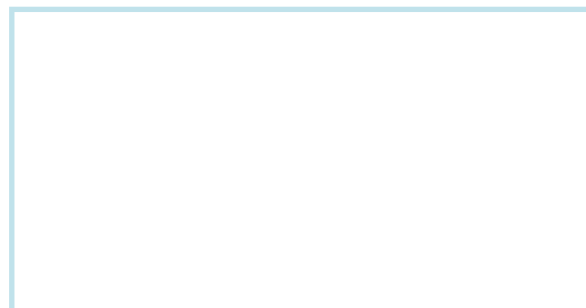
Chrome
JAG Part #: 14-886

Polished Brass
JAG Part #: 14-889



JAG Universal
5-1/2" Push Button Tank Lever

JAG Part #: 18-478



Bolts and Gaskets:

JAG Universal

Nylon bolts with Caps

- 2-1/2" Nylon Bolts with Washers, Nuts and Caps

JAG Part #: 17-026



JAG Universal

Nylon Toilet Bolts with Nuts

- 3-1/2" Nylon Bolts with Washer Nuts

JAG Part #: 17-027



JAG Universal

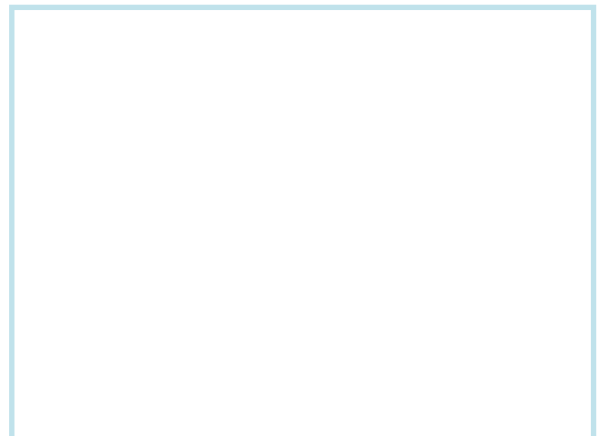
Bolt Caps with Washers

White

JAG Part #: 18-933

Bone

JAG Part #: 18-934



JAG Universal

JOHNI-BOLT STYLE BRASS CLOSET BOLTS

- Includes: Brass Bolts, Washers and Acorn Nuts

JAG Part #: 18-216

Dimensions: 1/4" x 2-1/4"



JAG Universal

JOHNI-BOLT STYLE BRASS CLOSET BOLTS

- Includes: Brass Bolts, Washers and Acorn Nuts

JAG Part #: 18-217

Dimensions: 5/16" x 2-1/4"



JAG Universal

CLOSE COUPLE TANK TO BOWL KIT

- Includes: Brass Bolts, Washers and Wing Nuts

JAG Part #: 18-220

Dimensions: 5/16" x 3-1/8"



JAG Universal

TANK TO BOWL KIT. 5/16" x 3-1/8".

- Includes: Brass Bolts, Washers and Wing Nuts

JAG Part #: 18-218

Dimensions: 5/16" x 3-1/8"



**AMERICAN STANDARD
TANK TO BOWL KIT**

- Kit for American Standard Tank to Bowl
- Includes: gaskets, screws, washers and nuts
- Dimensions: 5/16" x 3-1/8"

JAG Part #: 18-219



**AMERICAN STANDARD
CONVERSION AND BOLT DOWN KIT**

- Kit for American Standard Low Boy Flush Valves
- Includes: gaskets, screws and nuts (3 of each)
- Fits both brass and plastic models

JAG Part #: 18-135



**JAG Universal
ANCHOR FLANGE REPAIR KIT**

- Heavy Duty Metal and Plastic Components
- Cut to Fit
- For all sizes/models of toilet flange

JAG Part #: 18-139



**AMERICAN STANDARD
TANK TO BOWL "U" GASKET**

- Flush Valve Gasket fits American Standard

JAG Part #: 18-134



ELJER

ELJER TANK TO BOWL GASKET

- 3.16" OD
- 2.3" ID

JAG Part #: 18-137

OEM Reference #: 490-4333-00*



KOHLER

KOHLER TANK TO BOWL WASHER KIT

- 6 Large and 3 Small Washers

JAG Part #: 18-138

OEM Reference #: 52050*



JAG Universal

URINAL BOWL TO WALL GASKET KIT

- Kit for Wall Hung 3 PC Urinals
- Includes: Sponge Gasket, Alignment Ring and Adhesive Tape Roll

JAG Part #: 18-031

Dimensions: 3.58" OD x 2.16" ID



JAG Universal

WALL HUNG TOILET TANK TO WALL GASKET KIT

- Kit for Wall Hung Toilets
- Includes: Sponge Gasket, Alignment Ring and Adhesive Tape Roll

JAG Part #: 18-030

Dimensions: 5.35" OD x 3.5" ID



JAG Universal

TOILET/FLOOR SEAL GASKET

- Heavy Duty Soft Plastic
- Cut to Fit
- For all sizes/models of toilet footprint

JAG Part #: 18-147



JAG Universal

TOILET FLANGE STACK & SEAL

- Heavy Duty Solid Polypropylene
- Mounts to Floor Flange
- Cut and Stack as needed
- Each Flange is 1/4" thick

JAG Part #: 18-146



JAG Universal

4" CLOSET FLOOR FLANGE

- Solid Brass
- Heavy Duty
- Mounts to Floor Flange

JAG Part #: 18-206



JAG Universal

EXTENDED CARRIER NUTS

- For Short Wall Studs
- Cast Aluminium Nuts and Plastic Washers
- Set of 4

JAG Part #: 18-142



JAG Universal

CARRIER NUTS WITH WASHERS

- Fits Standard Wall Studs
- Cast Aluminium Nuts and Plastic Washers
- Set of 4

JAG Part #: 18-143



Wax Gaskets:

JAG Universal Wax Gasket

Standard: JAG Part #: 17-601

Thick: JAG Part #: 17-602

Standard with Horn: JAG Part #: 17-603

Extra Thick with Horn: JAG Part #: 17-604



Plunger:

JAG Universal

Drain Buster: Air Powered Plunger

- Pump-activated plunger
- 2 interchangeable heads
- Double lip feature on the larger suction cup

JAG Part #: 19-550



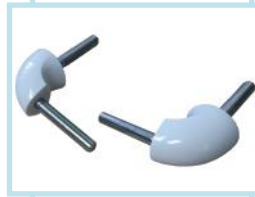
Toilet Seats:

JAG Universal

Commercial Toilet Seat: Open Front

- Elongated, Open Front, No Lid
- High Density Polypropylene
- Self-sustaining check hinges which hold the seat in any raised position up to 11° beyond vertical

JAG Part #: 19-551



JAG Universal

Elongated Front Toilet Seat

- Elongated Shape, with Lid
- High Density Polypropylene
- Slow Closing hinges with Easy Remove Clips for Cleaning

JAG Part #: 19-553



JAG Universal

Round Front Toilet Seat

- Round Shape, with Lid
- High Density Polypropylene
- Slow Closing hinges with Easy Remove Clips for Cleaning

JAG Part #: 19-552



JAG Universal

Elongated Front Toilet Seat

- Elongated Shape, with Lid
- High Density Polypropylene

JAG Part #: 19-555



JAG Universal

Round Front Toilet Seat

- Round Shape, with Lid
- High Density Polypropylene

JAG Part #: 19-554



Accessories:

Wiretone Baskets

Wiretone Baskets:

Soap Basket

Chrome

JAG Part #: 99-111

Brushed Nickel:

JAG Part #: 99-155



Sponge Basket,

Chrome:

JAG Part #: 99-311

Brushed Nickel:

JAG Part #: 99-355



Corner Soap Basket,

Chrome:
JAG Part #: 99-411

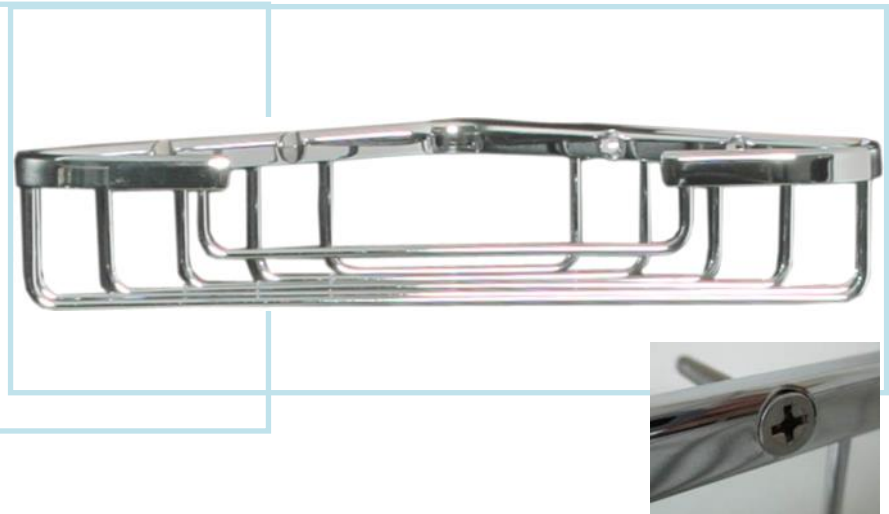
Brushed Nickel:
JAG Part #: 99-455



Large Corner Sponge Basket

Chrome:
JAG Part #: 99-511

Brushed Nickel:
JAG Part #: 99-555



Double Corner Utility

Chrome:
JAG Part #: 99-711

Brushed Nickel:
JAG Part #: 99-755



DISTRIBUTING:

JAG Plumbing Products is proud to be the trusted and official distributor of the following high quality brands.

National Distribution:

American Standard OEM Parts
Briggs Plumbing Products Ceramics
Icera USA Brand Ceramics
Kohler OEM Repair Parts
Penguin Toilets LLC
Rectorseal Products USA
Sioux Chief Plumbing Products

North American Distribution:

Amaircare Products
Boshart Industries Inc. Valves
Icera USA OEM Repair Parts
Reversomatic Softaire Fans
Sayco Faucets and Repair Parts
Shower Grate Shop Linear Drains

Please contact the JAG Offices for More Details at
1-855-686-0133

DISTRIBUTING:

Penguin LLC Toilets National Distribution:



Please contact the JAG Offices for More Details at
1 855 686 0133

DISTRIBUTING:

Shower Grate Shop Linear Drains North American Distribution:



Please contact the JAG Offices for More Details at
1 855 686 0133

Terms and Conditions

WARRANTY LIMITATIONS: *

JAG PLUMBING PRODUCTS distributes precision replacement parts. Brand names, Model Names, Original Manufacturers' names or Stock Numbers which may appear on invoices, catalogues, packages, quotations or correspondence, are so utilized for purposes of identification only and are not a warranty or representation, either expressed or implied.

* All manufacturers' names except JAG PLUMBING PRODUCTS used in this catalogue are for reference purposes only and do not indicate original equipment parts.

JAG PLUMBING PRODUCTS will fit designated brands and are not to be construed as an endorsement or acknowledgement, either expressed or implied that products are sold as authentic O.E.M. products made by or licensed by such manufacturers. The original equipment manufacturer bears no liability for the quality of JAG PLUMBING PRODUCTS.

This catalogue produced as the January 2018 issue replaces all previous catalogues or other notifications.

TERMS AND CONDITIONS OF SALE:

ALL TAXES EXTRA

FREIGHT AND SHIPPING:

All orders are FOB our warehouses:

- Canada: Pickering, Ontario
- U.S.A.: Niagara Falls, New York

LEAD TIMES:

- JAG PLUMBING PRODUCTS prides itself on delivering orders to customers as soon as possible. All orders placed will be acknowledged with a confirmation and will be shipped out as soon as possible.

PAYMENT TERMS:

- All orders are payable net 30 days from date of invoice.
- 2% net discount when paid within 15 days or less of the invoice date.
- Any amount past due is subject to a finance charge of 1.5% per month (18% per annum) to the past due balances.

PRICES:

- Prices are subject to change without notice. All orders will be shipped and invoiced at the prevailing price at the time of shipment. For larger quantities, we would like the opportunity to quote pricing and scheduled deliveries.

CLAIMS:

- Claims must be reported within 2 business days of receipt of goods. No claims will be allowed unless reported within said timeframe. All claims for shortages or damages should be reported by consignee, and must be accompanied by a copy of the proof of delivery receipt noting the specific shortage or damage.
- Any claim should be reported to JAG PLUMBING PRODUCTS Canada offices at 1-855-686-0133.
- Shipments are made at buyer's risk unless ordered to be insured.
- JAG PLUMBING PRODUCTS shall not be held responsible in any claim of injury or damage from the installation of JAG PLUMBING PRODUCTS merchandise.

Terms and Conditions

RETURNS:

- Returns are not accepted unless we are first notified of reason for the return and have authorized said return via an "RA#" - Return Authorization Number. JAG PLUMBING PRODUCTS will respond, in most cases, within 24 hours to all RA# requests. An RA# (or reason for decline) will be issued to the customer along with a Return Materials Form (RMF). Returned item(s) must be shipped with the RMF in order to be processed. Failure to include this form will result in the shipment being returned to the customer, at the customer's expense, and credit will not be considered. All RA#s expire 30 days after the date of issue. Returns on product (excluding defective items) will be accepted up to 90 days after date of delivery. Products returned without prior approval will be returned to sender freight collect.
- Return transportation must be PREPAID by customer. Any shipment sent collect will be rejected any returned at the customer's expense. Freight will be credited on defective merchandise or on orders cause by or resulting from shipping errors on our part.
- Credits will be issued at your cost when accompanied by an invoice or PO# otherwise the prevailing price will represent the credited amount.
- Material (excluding defective items) must be received by JAG PLUMBING PRODUCTS in sellable condition in the original packaging. Material (excluding defective items and our ship errors) will be subject to a minimum 25% restocking charge; Materials not received in original packaging will be subject to an additional 20% repackaging fee. Credits must be taken within one year of receipt.

MINIMUM ORDER QUANTITIES AND VALUES:

- All orders must be issued in increments of unit order quantities as listed in the catalog. Where only master case quantities are listed, orders must be issued by master case quantities as listed in the catalog. Partial order quantities will be increased to nearest inner case quantities. All orders must be placed conforming to priced units of sale, e.g.: bag, dozen, etc.
- Minimum order value - \$100.00 net

WARRANTY:

- JAG PLUMBING PRODUCTS warranty shall be limited to replacement or credit, not to exceed the purchase price of the item. Labor and/or installation charges of any kind are not covered by our warranty. The warranty is against defects in workmanship or material for a period of one (1) year from the date of purchase. The warranty covers only the specific use for which each item so designed.
- All claims regarding warranty must be reported to JAG PLUMBING PRODUCTS within 3 business days of occurrence.

BACKORDERS:

- If requested by the customer at the time of order, backorders exceeding \$50.00 will be held for 30 days. Backorders under \$50.00 will be cancelled.

Terms and Conditions

ILLUSTRATIONS/PHOTOGRAPHS:

- All images, photos and drawings in the catalog are intended as general description only. Unless specified, they do not represent any particular brand or likeness.
- Products may not be exactly as shown and may change at any time without prior notification.

REPRODUCTIONS:

- NO PART of this catalog may be reproduced without the expressed written consent of JAG PLUMBING PRODUCTS. All Photography and line art is the property of JAG PLUMBING PRODUCTS and cannot be reproduced or copied with out written permission.

CATALOG:

- JAG PLUMBING PRODUCTS shall not be held responsible for typographical errors and will not be held responsible for any liability associated with misprints, errors and/or pricing discrepancies in this publication.

JAG PLUMBING PRODUCTS

Pickering, Ontario
Canada L1W 2Y5

1 855 686 0133
www.JAGPlumbingProducts.com

