

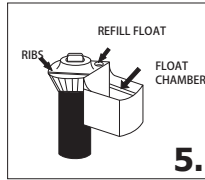
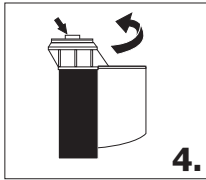
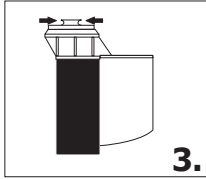
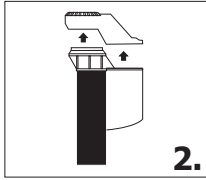
INSTRUCTIONS

Hunter*/Lavelle* Repair Kit

1. TURN OFF WATER SUPPLY TO TOILET & FLUSH TOILET.
2. DETACH REFILL TUBE & SNAP OFF COVER.
- 3 . GENTLY PUSH FLOAT ARM INWARD & REMOVE FLOAT .
4. WHILE HOLDING REFILL VALVE IN ONE HAND, TWIST TOP CAP 1/8 TURN COUNTERCLOCKWISE & REMOVE.
5. USING PARTS PROVIDED & RE-ASSEMBLE IN REVERSE ORDER.

IMPORTANT NOTES :

1. THE RIBS ON THE CAP SHOULD BE IN LINE WITH THE FLOAT CHAMBER & THE REFILL PORT MUST BE ALIGNED AS SHOWN.
- 2 . IF BALLCOCK TURNS OFF & ON BY ITSELF OR IF IT RUNS ON CONTINUOUSLY WITH NO WATER COMING OUT OF THE OVERFLOW TUBE, THEN REPLACE THE TANK BALL & RE-TEST.

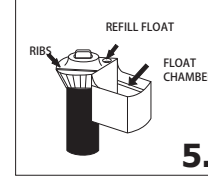
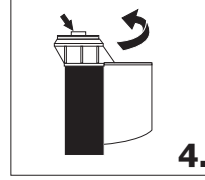
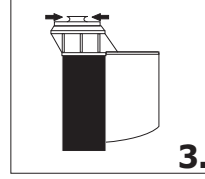
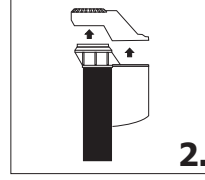


INS-18-099 (HR001K)

INSTRUCTIONS

Hunter*/Lavelle* Repair Kit

1. Cierre el suministro de al tanque.
2. Quite la manguera de rellenar y luego la tapadera.
3. Suavemente presione hacia en medio los brazos del flotador y quitelo levantandolo hacia arriba.
4. Mientras detiene la valvula con una mano, gire la part superior 1/8 en sentido contra horario oy quite la parte.
NOTE: direccion de "orificio de rellenar"
5. Con cuidado arme la valvula al revs de come se desarmo.
Improtante: Para poder armer las partes de superior se vavula, el "orificio de rellenar" debe quedar en direccioj como senaldo en ilustracion. Ponga la tapadera y luego la manguera de rellenar.



INS-18-099 (HR001K)