

LEROY HERITAGE MUSEUM ACQUIRES SECOND PROPERTY; PLANS EXPANDED REGIONAL HISTORY MUSEUM

*Learn About Our Plan to Enlarge Our Museum at a New Site,
Using the Current Site to Grow Our Local History Research Library*



**Give online
today at:**

www.leroyheritage.org

LeRoy Heritage Museum has acquired this 1896 Victorian hotel in LeRoy to become the site of its newly expanded museum.

❖
*Read More Inside
about How to Get
Involved with this
Exciting Project!*



The former Open Hand Grange, which currently houses the museum, will become an expanded research library and programming space.



AN EXCITING MESSAGE FROM LEROY HERITAGE MUSEUM, INC.

LeRoy Heritage Museum is pleased to announce the recent acquisition of an important property along Route 414 in the center of LeRoy, Pennsylvania, which includes a Victorian era hotel. The organization will use the property as the site of its new museum while its current museum will become a research library and local history programming space.

Founded in 2001, LeRoy Heritage Museum purchased and renovated the former Open Hand Grange on Mill Street in LeRoy, opening to the public in 2010. Beginning with LeRoy history, the museum soon added the history of Barclay Mountain to its collection. With the acquisition of the extensive Granville Township collection of Ruth Kinney-McIntire, the museum set about preserving Granville area history. The museum next received the collection of the former Canton Area Historical Society and since then has refocused on southwestern Bradford County as a whole.

The museum has grown rapidly over the years and has developed a need for more exhibit space, programming space, storage space, and a larger research library. The museum began looking at options in 2012 and since then has considered four different properties. Only one of these, the historic hotel set on 3.7 acres, met all of the needs.

Funds for the property purchase were donated by Rodney B. Mott. Mr. Mott was raised in LeRoy along with his four siblings by his parents, Frank and Betty Bly Mott (now deceased). Mr. Mott is a former CEO in the steel industry. Now retired he currently resides in South Carolina and Tennessee.

This contribution has made it possible for the museum to concentrate specifically on raising funds for renovation work. The museum has begun a major fundraising campaign with a goal of \$250,000 to cover both restoration of the historic building and the creation of an endowment fund for long-term support of the museum. A number of donors have already given contributions amounting to almost 1/3 of this goal and the museum is seeking others to get on board with this exciting project. The previous owners of the property invested significant funds in replacing mechanical systems, roof, windows, insulation and more. The museum will focus on completing public building code updates and turning the building into a functioning museum. The elaborate cherry staircase and other Victorian era features will be preserved.

Continued next page



Lewis House, built in 1896, contained a hotel and ballroom/opera house, general store, post office and lumber office.

Plans call for the first floor of the hotel to become the museum with four major exhibit rooms, a larger gift shop, and a volunteer room. Large pocket doors separate two of the exhibit rooms and these can be opened for larger temporary exhibits. The second floor will contain the restored Victorian ballroom for events and rooms for storage, the museum office, and an onsite caretaker's living quarters. The basement will contain a workshop for the cleaning and restoration of new museum pieces while the attic contains space that can be finished for future storage needs. The two floors of the house contain over 5,600 square feet of space and as much as 9,000 square feet including the unfinished basement and attic spaces. The present museum facility, in comparison, contains 2,500 square feet of space.

The current museum building, located on Mill Street in LeRoy, will contain an expanded local history research library, gift shop and a first-floor multipurpose room for local history programming, handicapped accessible research space and special museum events.

Built in 1896 by the Lewis Brothers company of LeRoy, the shingle-style Victorian was built to house a hotel and ballroom/opera house, general store, post office and lumber

Continued next page



Hand colored postcard image of the Lewis House, showing the lumber office that was added to the west side of the building.

office. The family business was composed of brothers, George Lewis, Harrison Lewis, and E. Lloyd Lewis, along with a brother-in-law, H.L. Stone. The brothers started in the lumbering business shortly before the end of the 19th century and after several years of success, built the hotel, known as the Lewis House with lumber produced at their portable saw mill on the mountain south of LeRoy. The company cut timber at Cranberry Marsh and moved its way across the mountain to Sunfish Pond and on to Carbon Run. In 1901 the company bid on a lumber contract that would have allowed them to continue working their way across the mountain. The Union Tanning Company ultimately chose the Barclay Brothers of Sinnamahoning, Pennsylvania, and the town of Laquin was born. Lumber stockpiled at the Lewis Brother's mill in Carbon Run was sold to the newly formed Laquin Lumber Company and used to build the sawmill there. The Lewis Brothers then closed down their mill and travelled by railroad to West Virginia and lumbered there for a period of time.

The hotel served as the stagecoach stop for LeRoy and travelers could get food and a room for the night. Regular dances hosted by the LeRoy Silver Cornet Band were held in the second floor ballroom as well as many community events such as LeRoy Center School graduation ceremonies. During weekends, single young men from Laquin would visit LeRoy

Continued next page

for some entertainment in the ballroom. As the story goes, one time the young men from LeRoy, jealous that these Laquin men were stealing their girls, threw them out one of the ballroom windows.

In later years, the hotel was turned into a doctor's office, then a funeral parlor, and finally a rest home before it became a private residence.

The museum board is excited about this project as they have searched for the right opportunity for a long time. "Many hours have been spent over the past four years discussing the best way to expand," said Matthew Carl, president of LeRoy Heritage Museum. Board members include Scott Shedden, Bob Storch, Lorelei Colton, Tom Carl, Donna Stone, Ann Carl, Dona Beers, Jeanne Butters, Ted Tomlinson, Marie O'Hara, and Matthew Carl.

The new location will be located on Route 414 and will therefore be more visible to travelers.

"Several historic homes in the center of LeRoy have been restored in recent years and the preservation of the hotel as a museum will be a great addition," said Carl.

For more information about giving opportunities and the recognition that donors will receive in the new museum, see the back page of this brochure, visit the museum website at www.leroyheritage.org or call 570-364-5003. Contributions are tax-deductible and may be sent to LeRoy Heritage Museum, Inc., 8051 Southside Road, Canton, PA 17724.

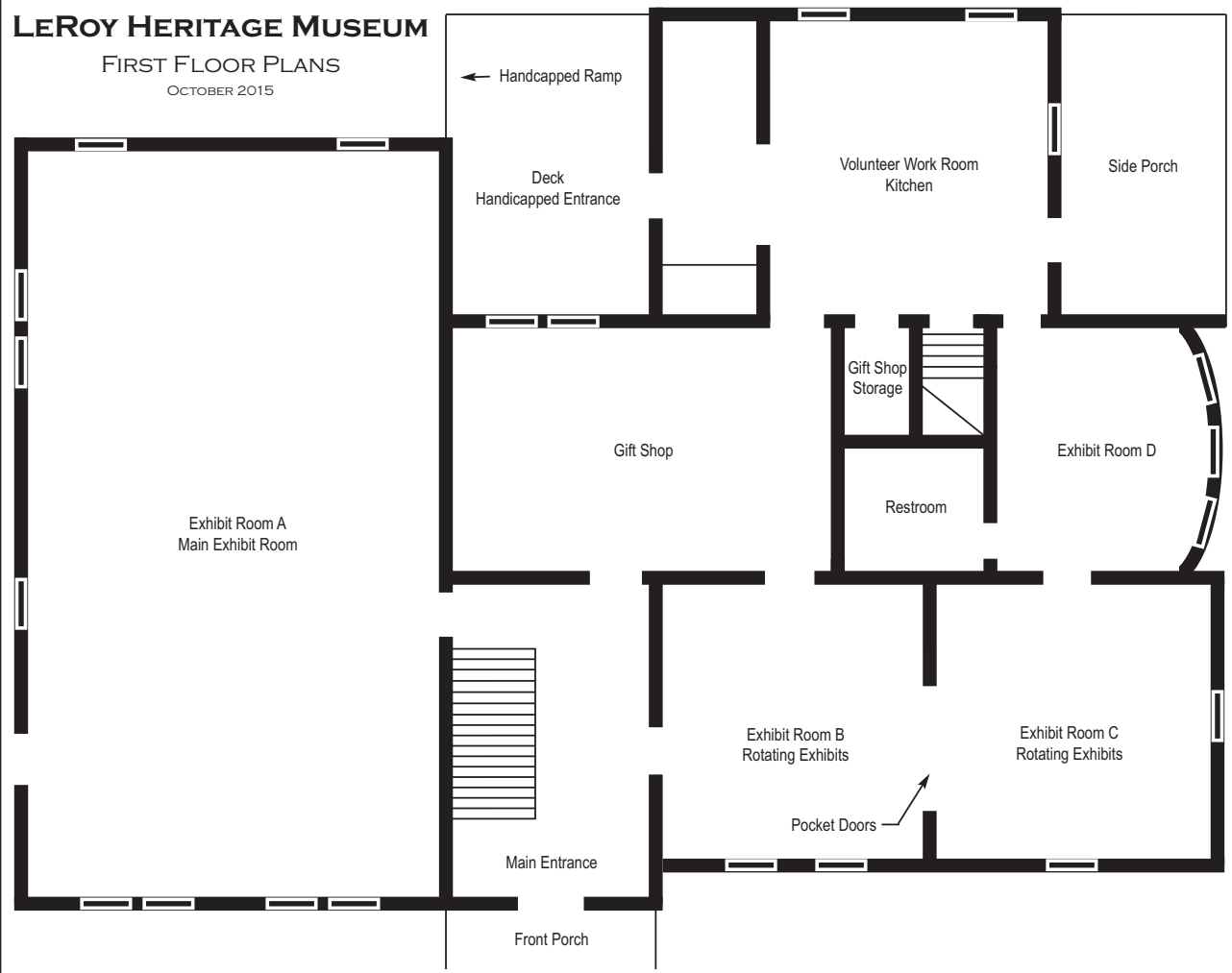


The ballroom inside the house as the previous owners hosted visitors during one of LeRoy Heritage Museum's Holly Home Tour Christmas events.

LEROY HERITAGE MUSEUM

FIRST FLOOR PLANS

OCTOBER 2015

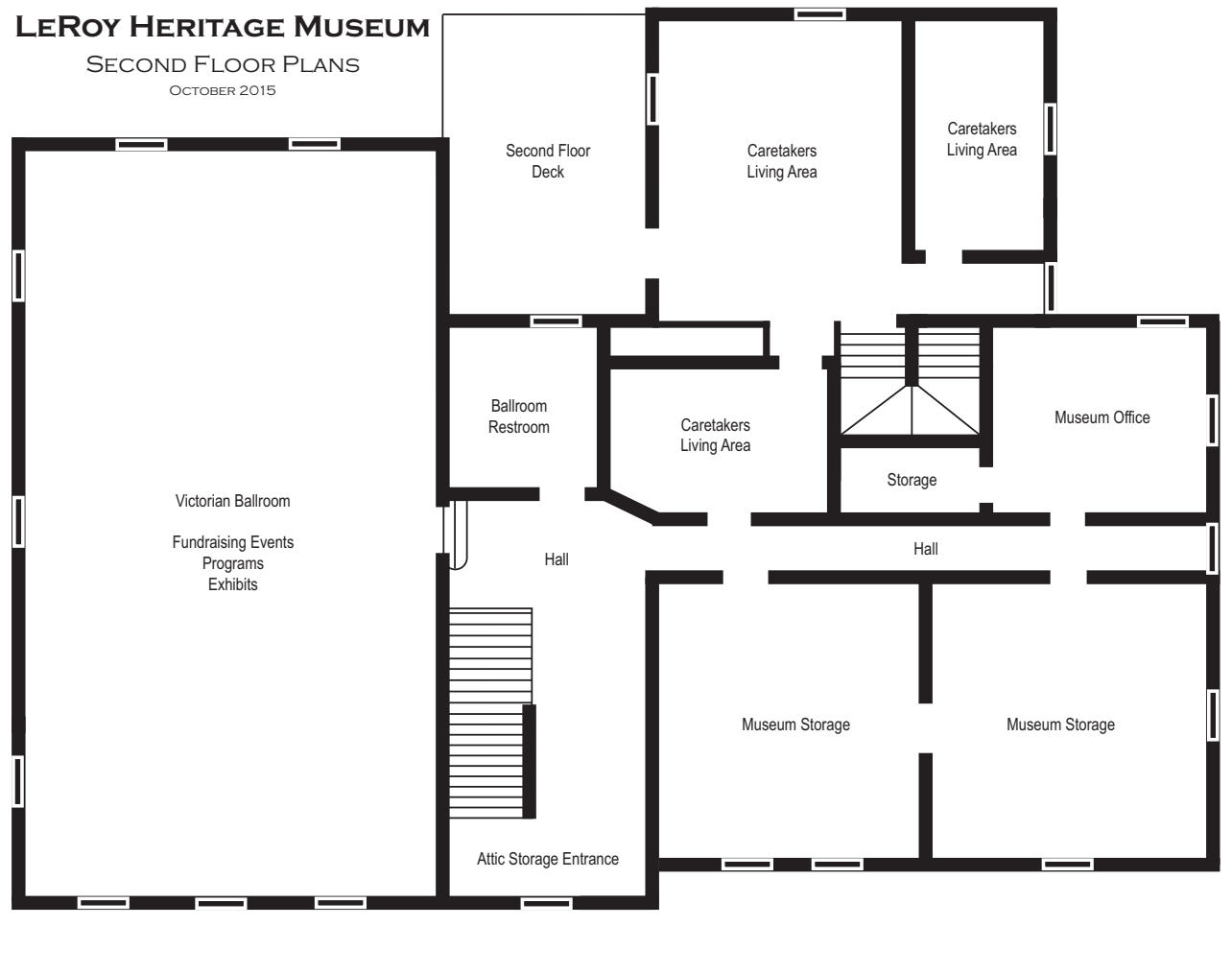


The grand staircase inside the hotel is made of cherry wood harvested from the mountain in LeRoy Township. Guests climbed these steps to access the ballroom or guest rooms.

LEROY HERITAGE MUSEUM

SECOND FLOOR PLANS

OCTOBER 2015



Lewis Brothers Lumber Company sawmill at Carbon Run.

LEROY HERITAGE MUSEUM CAMPAIGN DONATION FORM

PLATINUM DONOR

\$10,000 – Contributors at this level or higher will be permanently recognized as a Platinum Contributor on the donor wall inside the new museum lobby. This wall will be visible to all visitors as they enter the museum.

Contributors at this level will also have the opportunity to name a room inside the new museum on a first come, first serve basis.

GOLD DONOR

\$5,000 through \$9,999 – Contributors at this level will be permanently recognized as a Gold Contributor on the donor wall inside the new museum lobby. This wall will be visible to all visitors as they enter the museum.

Contributors at this level will also have the opportunity to have a 2x6" engraved sign placed in the Victorian ballroom next to a window in memory or in honor of a friend or family member (eight opportunities available).

SILVER DONOR

\$1,000 through \$4,999 – Contributors at this level will be permanently recognized as a Silver Contributor on the donor wall inside the new museum lobby. This wall will be visible to all visitors as they enter the museum.

Contributors at this level will also have the opportunity to have a 2x6" engraved sign placed next to a first floor museum window in memory or in honor of a friend or family member (twelve opportunities available).

BRONZE DONOR

\$500 through \$999 – Contributors at this level will be permanently recognized as a Bronze Contributor on the donor wall inside the new museum lobby. This wall will be visible to all visitors as they enter the museum.

ALL DONORS FROM \$1 AND UP WILL BE ACKNOWLEDGED IN OUR SEMI-ANNUAL JOURNAL, THE MONOGRAM, WITH THEIR NAME OR AS ANONYMOUS.

Name (as you would like it to appear on the donor wall; we will contact you for naming opportunity and memorial sign information when we are ready to produce the signs)

Address, City, State, ZIP (tax letters will be sent to this address)

Phone and/or Email

**MAIL COMPLETED FORM AND PAYMENT TO:
LEROY HERITAGE MUSEUM, 8051 SOUTHSIDE ROAD, CANTON, PA 17724.**