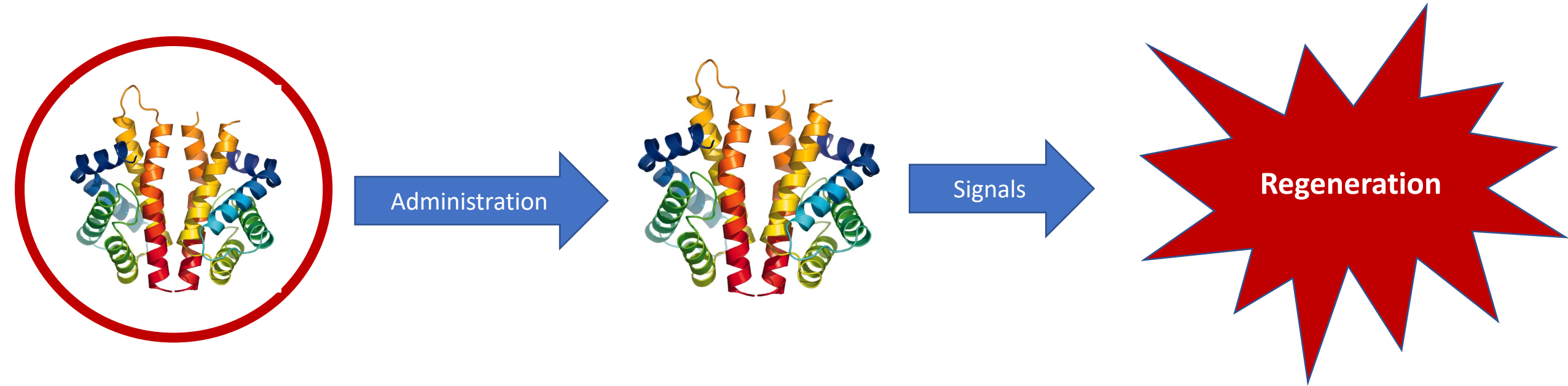


# PRODUCT DEVELOPMENT

Understanding the Working Mechanism of Stem Cells

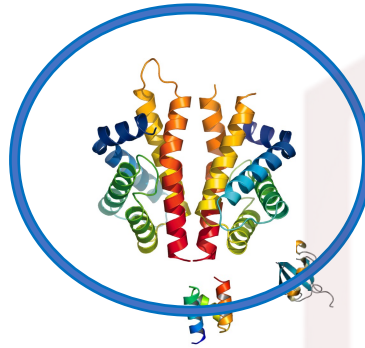


# Prime™ Development

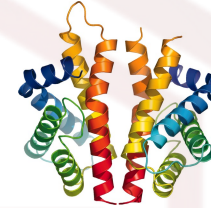
PrimePro™

A-Cellular

Step 1



Step 2



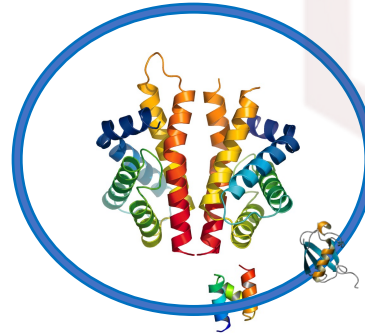
Step 3



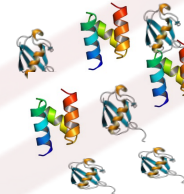
PrimeX™

Exosomes

Step 1



Step 2



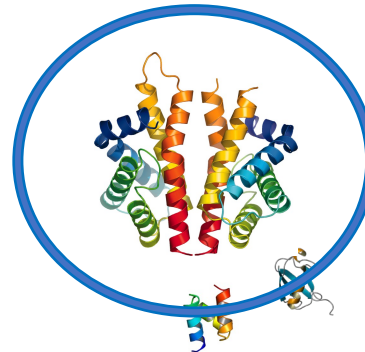
Step 3



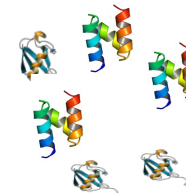
PrimeGrowth™

WJ/Amniotic-  
Derived Exosomes

Step 1



Step 2

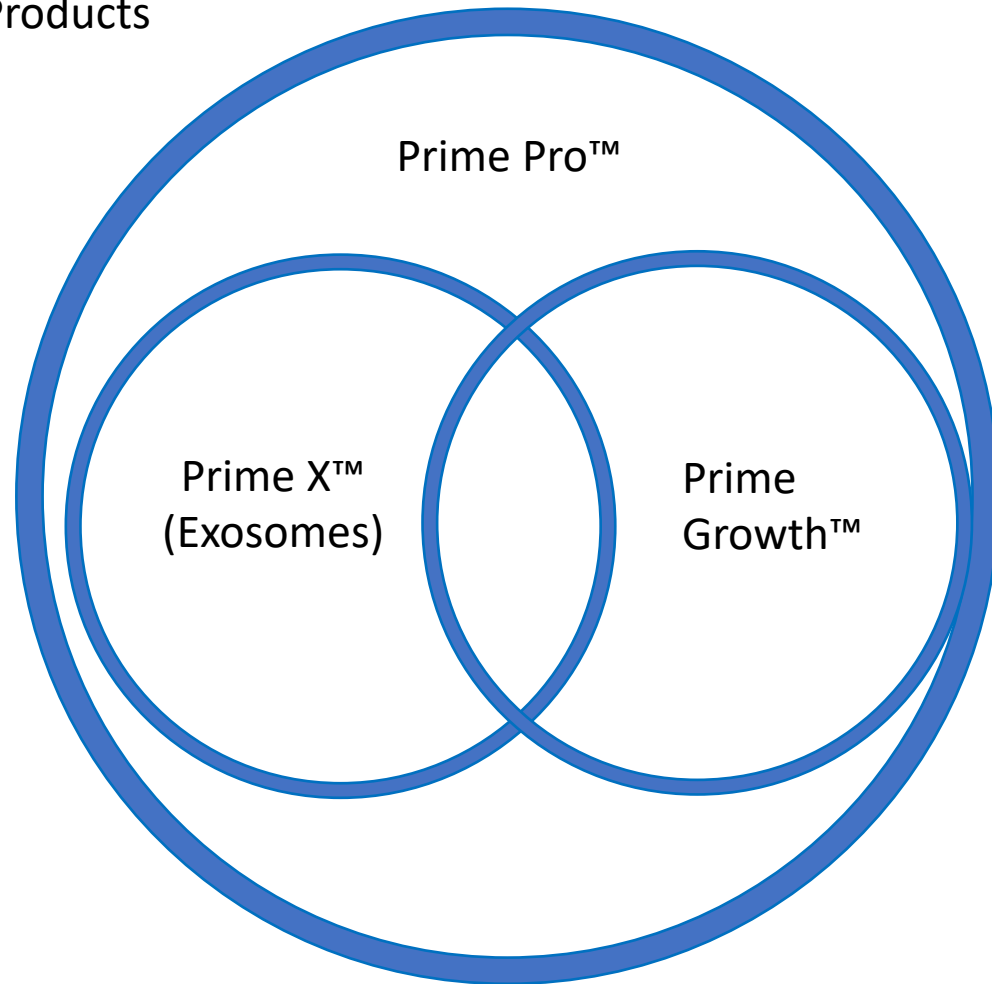


Step 3



# VENN DIAGRAM

A-Cellular Products





**THOMAS**  
ADVANCED MEDICAL LLC

#### ECM Scaffold

Collagen

151950

29514

4873

Elastin

40428

10673

857

Fibronectin

10843200

3460320

690885

Hyaluronic Acid

5610

1695

216

Fetuin-A

5893800

1754859

499228

Serpin A4

200400

51493

9036

#### Cell-Cell and Cell-ECM Interaction

Thrombospondin - 2

3900

1084

284

Adhesion G Protein

8405

2214

552

ICAM 1

12878

2600

410

#### Immune and Inflammatory Response

Complement C5

40428

11108

956

Galectin - 9

5610

1684

484

IL1RN

6750

2087

559

#### Cell Survival, Division, Differentiation and Migration

Fibroblast Growth Factors

2441

533

118

IGFBP 3

3997455

1155205

216904

IGFBP 6

150050

34606

6371

IGFBP 1

561300

170467

24071

EFG R

5610

1692

399

\* Units of measure are in pg/mL

\*\*Raw data was obtained from Proteomics Core Division at UT Southwestern Medical Center