

PERFECTIDES

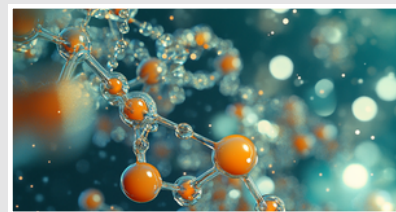
MIND BODY & SOUL INFORMATION PAGE



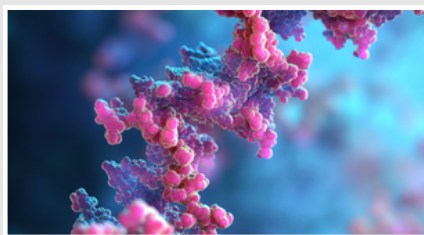
BPC-157 TB500 MGF Blend

The Combination Of BPC-157, TB500, and MGF (Mechano Growth Factor) creates a powerful peptide blend that offers extensive regenerative and healing benefits for the human body. BPC-157 is renowned for its ability to accelerate the healing of muscles, tendons, and ligaments, and reduce inflammation. TB500 on the other hand, promotes cell migration and proliferation, enhancing tissue repair and improving flexibility and muscle recovery. MGF is a potent variant of insulin-like growth factor (IGF-1) that stimulates muscle growth and repair, particularly in response to physical stress and injury. Together, these peptides work synergistically to support rapid recovery from injuries, enhance muscle growth, reduce inflammation, and promote overall tissue regeneration. This blend is particularly beneficial for athletes and individuals seeking to optimize their physical performance and accelerate recovery times.

**Weight Loss
Injury Healing**



**Anti-Aging
Cognitive Enhancing**



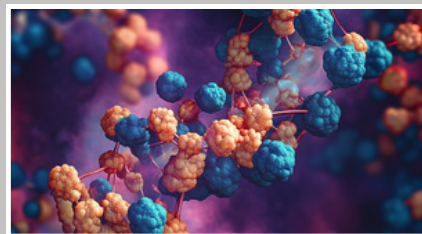
BDNF- Brain Derived Neurotrophic Factor

Brain-Derived Neurotrophic Factor also known as BDNF is a crucial protein that plays a pivotal role in the growth, maintenance, and survival of neurons in the brain, it is essential for neuroplasticity, the brain's ability to reorganize itself by forming new neural connections, which is vital for learning, memory, and cognitive function. BDNF enhances overall brain health by promoting the growth of new neurons and synapses, thereby improving mental clarity, mood, and resistance to stress. Elevated levels of BDNF have been associated with reduced risk of neurodegenerative diseases like Alzheimer's and Parkinson's. By supporting neural health and cognitive performance, BDNF is a key factor in maintaining a sharp and resilient mind throughout life.

Copper GHKCu

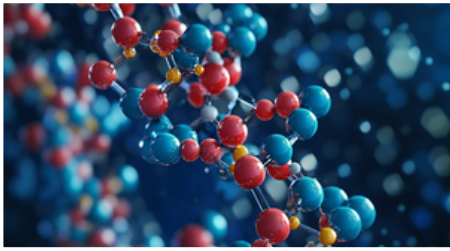
Copper with GHK-Cu (Glycyl-L-Histidyl-L-Lysine-Copper) is a powerful peptide complex known for its remarkable regenerative and healing properties. This blend plays a critical role in tissue repair and collagen synthesis, making it a popular ingredient in anti-aging skincare products for reducing wrinkles and improving skin elasticity. Beyond its cosmetic benefits, GHK-Cu also has profound effects on overall health by promoting wound healing, reducing inflammation, and enhancing the body's natural repair processes. It has been shown to stimulate the production of antioxidant enzymes, protecting cells from oxidative damage and supporting a robust immune response. Additionally, GHK-Cu can improve hair growth and overall skin health, offering a comprehensive approach to rejuvenation and well-being.

Injury Healing



Tirzepatide GIP-GLP-1-BPC157

Weight Loss

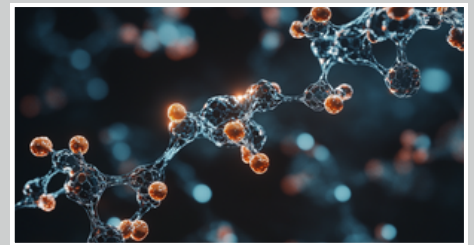


The Blend of Tirzepatide with GIP (Gastric Inhibitory Polypeptide), GLP-1 (Glucagon-Like Peptide-1) and BPC-157 offers a comprehensive approach to metabolic health, tissue repair, and overall well-being. Tirzepatide, a dual agonist of GIP and GLP-1 receptors, enhance insulin sensitivity and promotes weight loss by regulating blood sugar levels and reducing appetite. The inclusion of BPC-157, known for its potent regenerative and anti-inflammatory properties, further amplifies the blend's benefits by accelerating the healing of muscles, tendons, and ligaments. This synergistic combination not only supports metabolic optimization and weight management but also enhances the body's natural repair processes, making it a powerful tool for improving both metabolic health and physical recovery.

NAD + 1000mg

NAD + (Nicotinamide Adenine Dinucleotide) at a 1000mg dosage is a potent molecule that plays a critical role in cellular energy production and overall metabolic function. As a coenzyme found in every cell of the body, NAD+ is essential for converting nutrients into energy and supporting vital cellular processes. High levels of NAD+ are linked to enhanced mitochondrial function, which boosts energy levels, improves cognitive performance, and promotes cellular repair. Additionally, NAD+ had been shown to activate sirtuins, a family of proteins that regulate cellular health and longevity thereby offering anti-aging benefits. It also aids in DNA repair, reducing oxidative stress, and supporting a robust immune system. Overall, NAD+ supplementation can significantly enhance physical and mental performance, slow down the aging process, and improve overall health and vitality.

Anti-Aging Cognitive Enhancing



3X Blend GH Secretagogue, IPAMORELIN TESAMORELIN, GHRP2

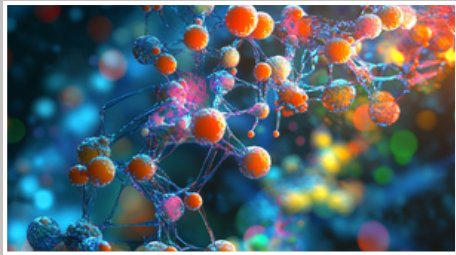
Lean Muscle Weight Control



The 3x Blend of GH secretagogues, including Ipamorelin, Tesamorelin, and GHRP-2, offers a powerful combination for stimulating the body's natural production of growth hormone (GH). Ipamorelin is known for its ability to increase GH release without significantly affecting cortisol levels, making it a safe and effective option for enhancing muscle growth, fat loss, and recovery. Tesamorelin specifically targets visceral fat reduction while also promoting lean muscle mass, making it highly beneficial for metabolic health. GHRP-2, another potent GH secretagogue, further amplifies GH release, aiding in tissue repair, Muscle growth, and overall rejuvenation. Together, these peptides work synergistically to enhance physical performance, accelerate recovery, reduce body fat, and improve overall vitality, making this blend a comprehensive solution for optimizing health and fitness.

GLP-1 / BPC-157

Lean Muscle Weight Control



The combination of GLP-1 (Glucagon-Like Peptide-1) with BPC-157 offers a multifaceted approach to enhancing both metabolic and tissue health. GLP-1 is a powerful incretin hormone that plays a key role in regulating blood sugar levels by enhancing insulin secretion and inhibiting glucagon release, which aids in weight management and supports cardiovascular health. Additionally, GLP-1 can improve satiety, reducing food intake and promoting weight loss. BPC-157, known for its profound regenerative properties, complements GLP-1 by accelerating the healing of muscles, tendons, and the gastrointestinal tract, while also reducing inflammation. Together, these peptides provide a synergistic blend that not only optimizes metabolic processes and promotes weight loss but also supports rapid recovery and tissue repair, enhancing overall physical health and well-being.

PNC-27 Ursolic Acid

PNC-1 (Pyrroloquinoline Quinone) and Ursolic Acid from a powerful duo with extensive benefits for the human body. PNC-1, a redox cofactor and antioxidant, plays a crucial role in cellular energy metabolism and mitochondrial biogenesis, which enhances overall energy levels, cognitive function, and protects against oxidative stress. It also supports neuroprotection, promoting brain health and potentially reducing the risk of neurodegenerative diseases. Ursolic Acid, a natural compound found in apple peels and other plants, is renowned for its anti-inflammatory and anti-carcinogenic properties. It aids in muscle growth, fat reduction, and improves glucose metabolism, contributing to better weight management and metabolic health. Additionally, Ursolic Acid has been shown to enhance skin health and reduce the risk of chronic diseases. Together, PNC-1 and Ursolic Acid offer a comprehensive approach to boosting energy, protecting against oxidative damage, and promoting overall health and longevity.

Disease Immune Modulation



LL37

Disease Immune Modulation



LL-37 is a potent antimicrobial peptide that plays a vital role in the body's innate immune system. It is part of the cathelicidin family of peptides and is known for its broad-spectrum antimicrobial activity, effectively fighting against bacteria, viruses, fungi, and even some cancer cells. LL-37 not only helps defend against infections but also promotes wound healing by modulating the inflammatory response and stimulating the migration and proliferation of cells involved in tissue repair. Additionally, LL-37 had been shown to enhance the immune system's ability to recognize and eliminate pathogens, making it a crucial component in maintaining overall immune health. Its anti-inflammatory properties further contribute to reducing chronic inflammation, which is linked to a variety of health conditions. Overall, LL37 offers significant benefits in enhancing immune defense, accelerating wound healing and promoting overall health and well-being.

PERFECTIDES

MIND BODY & SOUL INFORMATION PAGE

WEIGHT LOSS

- **GLP-1** (Glucagon-Like Peptide-1) is an incretin hormone that regulates blood sugar levels by enhancing insulin secretion and promoting satiety, which aids in weight management and metabolic health.
- **BPC-157** is a synthetic peptide renowned for its powerful regenerative properties, accelerating the healing of muscles, tendons, and gastrointestinal tract while reducing inflammation.
- **Tirzepatide** is a novel medication that acts as a dual agonist for both GIP (Gastric Inhibitory Polypeptide) and GLP-1 receptors, effectively enhancing insulin sensitivity and promoting weight loss. By targeting these incretin pathways, it helps regulate blood sugar levels, reduce appetite, and improve overall metabolic health.

Injury Health

- **Joint Juice with Synthetic Synovial Fluid and a Proprietary Peptide blend** is a formulation designed to mimic the natural lubrication found in healthy joints, thereby reducing friction and joint pain. This innovative blend not only provides immediate relief but also supports long-term joint health by promoting cartilage repair and reducing inflammation.
- **THYMOSIN BETA 4 (TB-4) and its synthetic counterpart, TB500**, are peptides that play a crucial role in tissue repair and regeneration by promoting cell migration, reducing inflammation, and accelerating wound healing. These peptides are particularly beneficial for enhancing muscle recovery, improving flexibility, and supporting overall tissue health.
- **MGF** (Mechano Growth Factor) is a variant of the IGF-1 (Insulin-Like Growth Factor-1) gene that is primarily involved in muscle repair and growth by promoting the proliferation and differentiation of muscle stem cells.
- **Water-Soluble injection curcumin** is a bioavailable form of the natural compound curcumin, designed for direct administration to provide potent anti-inflammatory and antioxidant benefits, enhancing overall health and aiding in the treatment of various inflammatory conditions.
- **Hypoxia Eye Drops with BPC157, TB4, MGF, KPV, and NAC** are an advanced formulation designed to promote rapid healing and regeneration of eye tissue, reduce inflammation and protect against oxidative stress, thereby improving overall ocular health and recovery from injuries.
- **Copper GHK-Cu** is a naturally occurring peptide complex that combines the copper ion with glycyl-L-histidyl-L-lysine, known for its powerful skin rejuvenation properties, promoting collagen production, wound healing, and reducing inflammation while enhancing overall skin health and appearance.

Lean Muscle Weight Management

- **The 3x Blend of GH secretagogue, IPAMORELIN, TESAMORELIN, GHRP2** is designed to synergistically stimulate the body's natural growth hormone production, promoting muscle growth hormone production, promoting muscle growth, fat loss, and overall rejuvenation. This potent combination enhances recovery, supports metabolic health, and combats the effects of aging by boosting endogenous growth hormone levels.
- **The 4x Blend of GH secretagogues, including IPAMORELIN, TESAMORELIN, GHRP-2 and GHRP-6**, offers a powerful synergistic effect to significantly enhance the body's natural growth hormone release, supporting muscle growth, fat reduction, and improved recovery. This comprehensive formulation not only amplifies the benefits of each individual peptide but also optimizes overall metabolic health and combats the signs of aging by elevating endogenous growth hormone levels.
- **Follistatin, specifically FST-344**, is a potent protein that inhibits myostatin, thereby promoting significant muscle growth and strength while also playing a role in tissue repair and regeneration.
- **IGF1-LR3 (Insulin-Like Growth Factor 1 Long R3)** is a modified version of IGF-1 with an extended half-life, designed to enhance muscle growth and repair by promoting protein synthesis and increasing cellular uptake of nutrients.
- **Gonadorelin** is a synthetic hormone that mimics the natural gonadotropin-releasing hormone (GnRH) in the body, used primarily to stimulate the release of luteinizing hormone (LH) and follicle-stimulating (FSH), which are crucial for reproductive health and function.

PERFECTIDES

MIND BODY & SOUL

INFORMATION PAGE

Lean Muscle Weight Control

- **FRAG MOD FRAG 5mg ACADESINE 25mg** Fragment 176-191 (FRAG MOD) is a modified peptide of a human growth hormone (HGH) specifically designed to target fat loss without affecting blood sugar, while Acadesine is an AMP-activated protein kinase (AMPK) activator that enhances cellular energy production and had potential applications in improving metabolic health and athletic performance.
- **GLP-1 /BPC157** is a synergistic combination where GLP-1 (Glucagon-Like peptide-1) enhances insulin secretion and glucose metabolism, while BPC157 promotes healing and reduces inflammation, together offering comprehensive benefits for metabolic health and tissue repair.
- **Tirezpatide** is a novel dual agonist of the glucose-dependent insulinotropic polypeptide (GIP) and glucagon-like peptide-1 GLP-1 receptors, designed to significantly improve glycemic control and support weight loss in individuals with type 2 diabetes by enhancing insulin secretion and reducing appetite.

Anti-Aging cognitive Enhancing

- **Epithalon (Epitalon)**, is a synthetic peptide that acts as a telomerase activator, promoting the elongation of telomerase and thereby supporting telomere maintenance and potentially slowing down the aging process at the cellular level and improving longevity and overall health.
- **BDNF Brain-Derived Neurotrophic Factor (BDNF)** is a vital protein that supports the survival, growth, and differentiation of neurons, significantly contributing to brain plasticity and cognitive function. It plays a crucial role in learning and memory, and its levels are often associated with mental health, with decreased BDNF linked to conditions such as depression and neurodegenerative diseases.
- **BioDERM Anti-Aging Peptides Serum** is a skincare formulation enriched with bioactive peptides that aim to reduce the appearance of fine lines and wrinkles, enhance skin elasticity, and promote a youthful, radiant complexion.
- **NAD+1000mg** is a high-potency supplement designed to boost levels of Nicotinamide Adenine Dinucleotide (NAD+) a critical coenzyme involved in cellular energy production, DNA repair, and overall metabolic function, potentially supporting enhanced vitality and longevity.

Disease Immune Modulation

- **LL37** is a potent antimicrobial peptide that plays a crucial role in the immune system by directly killing pathogens, modulating immune responses, and promoting wound healing and tissue repair.
- **THYMOSIN Alpha-1** is a therapeutic peptide that enhances immune function by stimulating the activity of T-cells, thereby improving the body's defense against infections and potentially aiding in the treatment of various immune-related conditions.
- **PNC-27 / ursolic acid** is a synthetic peptide developed to selectively target and induce apoptosis in cancer cells by binding to specific membrane proteins, potentially offering a novel approach in cancer treatment. Ursolic acid, a natural compound found in various plants, exhibits anti-inflammatory, antioxidant, and anticancer properties, and when combined with PNC-27, it may enhance the peptide's effectiveness in combating cancer.
- **THYMOSIN A ursolic acid TA-1 UA** is an immune-modulating peptide that enhances the activity of T-cells and other components of the immune system, potentially improving the body's defense against infections and diseases. When combined with ursolic acid (UA), a natural compound known for its anti-inflammatory and anticancer properties, this formulation may offer synergistic benefits in boosting immune function and providing additional therapeutic effects.
- **Water-Soluble injectable Resveratrol** is a bioavailable form of the antioxidant resveratrol, designed for direct administration into the bloodstream, which aims to enhance its therapeutic benefits such as anti-aging, anti-inflammatory, and cardioprotective effects.
- **Water-Soluble Quercetin** is a highly bioavailable form of the natural flavonoid quercetin, designed to be easily absorbed by the body, enhancing its antioxidant, anti-inflammatory, and immune-boosting properties.
- **Water-soluble injectable Curcumin** is a highly bioavailable form of the active compound in turmeric, designed for direct administration into the bloodstream to maximize its potent anti-inflammatory, antioxidant, and anticancer properties.