



Melbourne Whittley Cruiser Club Inc.

Cruise Report – Easter Cruise 2019.

Round the Top of the Bay.

It is always a challenge to cruise for four consecutive days on Port Phillip Bay, at anytime. We were impressed to see eight crews very enthusiastic about taking on this challenge! Who would have thought we would get four magnificent calm days in April, hot enough to go swimming! The most impressive outcome from this cruise was that we managed to cruise to a different location each day and most of the crews on the cruise had never cruised there before.

A new adventure for all, each day!

Cruise Dates: Friday 19 April 2019 to Monday 22 April 2019.

Crews Registered:

- Lucky Us – Gary & Lee Honeychurch
- Our Time – Russell Breguet & Deb
- Mahalo – Laurie & Dael Jackson
- To the Point – Dean, Tracey, Manning & Bryce Worsley
- Black Sheep – Peter & Caroline Holyoake
- Serenity – Tony & Diane Marshall
- Black Betty – Erwin Abbinga
- Ruby Tuesday – Wilco & Marisca Seinen

Cruise Location:

The tentative cruise plan for the Easter 2019, was a "Round the Top, of the Bay" Cruise. This was planned to be a "Journey" Cruise, staying at different Marinas, starting and finishing at the same place. Due to the unpredictability of the winds on the bay and the initially, small number of boats registered we changed this, to cruise to different location around the top of the Bay each day, while returning to Melbourne City Marina each of the 4 nights. This became the cruise of new experiences for many crews. I am very pleased to be able to report that on each of the four days over Easter we cruised to 4 different locations that most of the crews had never cruised to before.

Day 1 - Friday 19 April,

Five crews launched at St. Kilda Marina and Black sheep cruised from Pier 35 to join the cruise from St. Kilda Marina, out to the south end of the main shipping channel markers. It was so calm we could have water skied from there to Wyndham Harbour with the city skyline in the back ground. We had lunch at Wyndham harbour then cruised back up the bay to the mouth of the Yarra to spend the night at Melbourne City Marina.



Melbourne Whittley Cruiser Club Inc.
Cruise Report – Easter Cruise 2019.
Round the Top of the Bay.



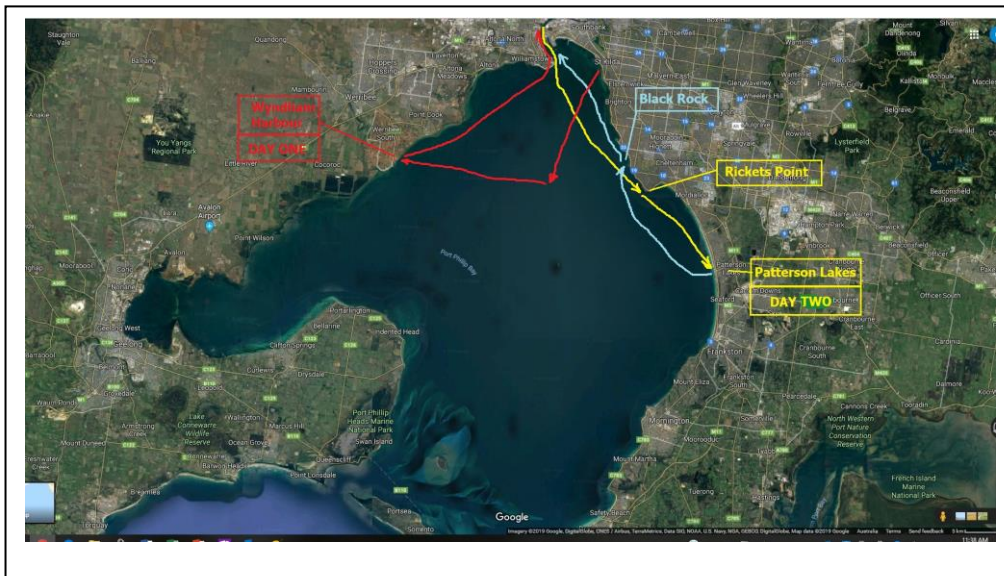
Figure 2 - Calm in the middle of the bay with the City in the back ground



Figure 1 - Wyndhan Harbour - Friday lunch

Day 2 – Saturday 20 April

After a fun night in the lounge at Melbourne City Marina, all 6 boat crews were up and ready to cruise by 9:30. Today was our most adventurous and longest cruise, from Melbourne City Marina down to Patterson Lakes. Again, the Bay was like glass. We all got up on the plane and headed towards Ricketts Point, off Beaumaris, at up to 35 knots, all making our own wakes on the calm bay. Tony and Di, in Serenity had a fuel gauge issue and returned to pier 35 to fuel up. The other 5 boats re-grouped at Ricketts Point and headed south towards Carrum, where we all cruised up the Patterson river to find the brand new public floating pontoon jetty near the supermarket and bakery for a lunch and fuel stop. No-one on the cruise had stopped in there before so we all took the opportunity to have Fox's Breakfast, "A pit stop and a look around". Russell & Deb walked down to the Cove restaurant. Others walked to Victorian Boat Sales while some relaxed on their boats in the sun. Actually, it was quite hot and we were looking for shade, then Russell suggested a swim, it was decided that we would stop around Black Rock on the way back for a dip in the Bay.





Melbourne Whittley Cruiser Club Inc.

Cruise Report – Easter Cruise 2019.

Round the Top of the Bay.

We had all agreed that Saturday night would be group cook up night and we would utilise the magnificent facilities of the Melbourne City Marina. Dean, Tracey, Laurie & Dael had their Costco cards and took most of the group shopping for food to cook on the BBQ. Costco was a new experience for some of us, and what a massive place it is. We bought a heap of steak, burgers, sausages, bread and salads that 14 of us could not finish. It was a bargain, that cost us \$7.50 a head. It was a fun night that finished with some singing on the balcony before back to the boat for bed.



Figure 6 - Patterson Lakes



Figure 5 - Patterson Lakes Cove Restaurant



Figure 4 - Swimming near Black Rock



Figure 3 - BBQ at Melbourne City Marina



Melbourne Whittley Cruiser Club Inc.

Cruise Report – Easter Cruise 2019.

Round the Top of the Bay.

Day 3 – Sunday 21 April

Sunday had the predicted highest wind for the Easter period. It reached 12 Knots! It was suggested by Di to attempt to cruise the Yarra. This is a cruise that not many of the crews had ever done and one we rarely get to do as the tides are too high and we struggle to get under the bridges. We checked the tide chart and confirmed a perfect time of 10:30am Low tide and the 2.69m clearance under Spencer Street Bridge. Measured all the boat heights from the water line and planned to be at Spencer Street an hour before low tide.

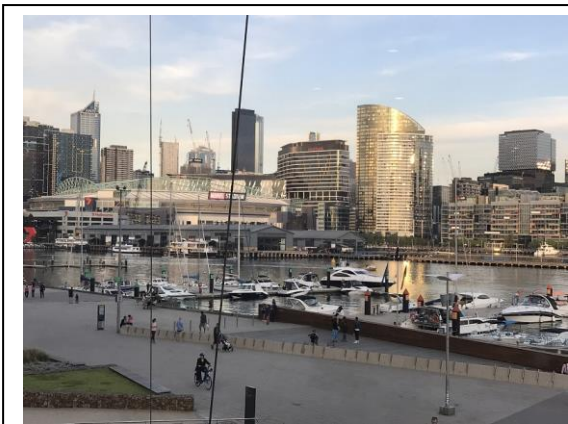


Figure 8 - Melbourne City Marina



Figure 7 - Our Time ready to head under the Bolte Bridge then up the Yarra for the first time

"To the Point", the SL24, was the highest and cleared the lowest bridge with ease. It is a very different perspective of the City of Melbourne from the Yarra as you cruise past the Crown Casino, Flinders Street Station, under the Swanton Street bridge and past the MCG. With no rowing clubs out on the Sunday, we had the river to ourselves apart from a few kayakers and an angry tour boat operator who believed we were on the wrong side of the bridge. Obviously, he did not have the same map as we were using!

On the first two days of our "Round the bay" adventure, we had completed two cruises that not everybody had done previously, so Di said the challenge was to cruise up the Yarra further than anyone in the group had ever been. We went past Herring Island, past St Kevin's, under the Monash freeway, past Scotch College and headed towards Hawthorn, before we turned to head back down stream.

Challenge completed. Another new location ticked off the bucket list!

Sunday night saw the arrival of Wilco & Marisca Seinen, who had just flown in from a week's holiday in Oman. They had left the Ruby Tuesday moored in the marina for a week so they could join the cruise as soon as they landed. I'm sure they were not expecting such a crazy



Melbourne Whittley Cruiser Club Inc.

Cruise Report – Easter Cruise 2019.

Round the Top of the Bay.

"welcome home" when they stepped out of the Uber from the airport to 14 friends enjoying happy hour on the balcony at Melbourne City Marina, shouting to come on up for a drink!

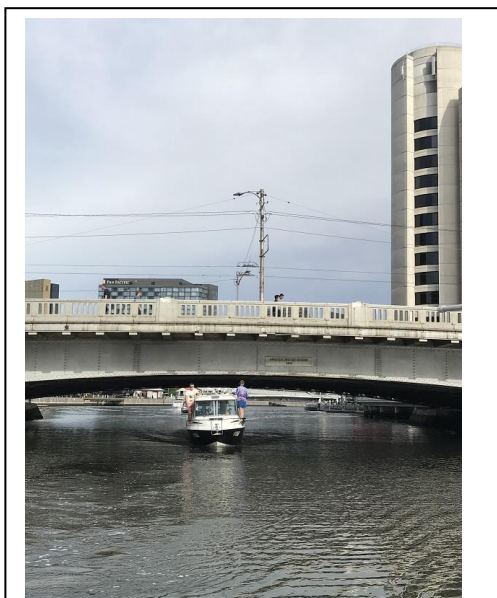


Figure 10 – "To the Point" under the Spencer Street Bridge with Manning & Bryce checking clearance and inspecting the bridge structure!



Figure 11 - Whittleys on the Yarra with the Melbourne CBD in the background

Day 4 – Monday 22 April

Discussions at the Restaurant on Sunday night as to the location for our last cruise around the top of the Bay on Monday prompted requests to continue the theme of "Somewhere we had not been"!

Peter & Caroline suggested we cruise to Williamstown, as they were the only crew who had been there before, but to make it interesting, Peter suggested that we cruise to the public wooden jetty near the centre of Williamstown and moor there as Black Sheep had never done that before!

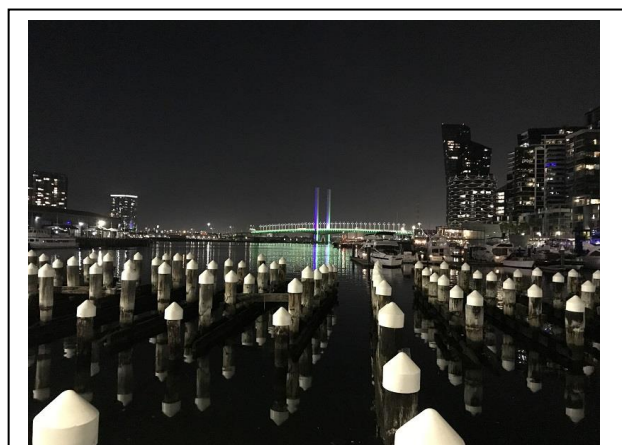


Figure 9 - Bolte Bridge & Melbourne City Marina



Melbourne Whittley Cruiser Club Inc. Cruise Report – Easter Cruise 2019. Round the Top of the Bay.

This crew were ready for a challenge so Peter and Caroline took the cruise leader roll and with Erwin arriving in Black Betty they lead the 8, Whittley boats successfully down to Williamstown for lunch.



Figure 14 - Melbourne City Marina



Figure 15 - Williamstown Public wooden Jetty



Figure 12 - Brunch & Coffee at Williamstown



*Figure 13 - The Crew on Williamstown Jetty
- Did we have a great Easter!!*

Williamstown is a great place for brunch and a coffee. Thanks to Peter and Caroline in Black Sheep, for leading us all down to Williamstown. We all said our good-byes as Black Betty and Black sheep headed back to pier 35 and Melbourne City Marina while the rest of the crews headed to St. Kilda Marina to retrieve and head home.

It was a fantastic Easter Cruise. Four different cruise destinations and journeys on Port Phillip Bay and the Yarra, four brilliant calm and warm days, four too many happy hours, four too many Easter eggs but eight enthusiastic Whittley crews!



Melbourne Whittley Cruiser Club Inc.
Cruise Report – Easter Cruise 2019.
Round the Top of the Bay.

Thanks to all of you for your company, assistance, suggestions and spirit of adventure in tackling the "Round the Top of Bay" Easter Cruise 2019.

Cheers, Gary & Lee Honeychurch.