

CITY CLERK'S OFFICE
 So. Burlington, Vt. DATE 20 1985
 received for record at 2:25 o'clock
 P.M. and recorded as Vol. 147 of
 PLATS as page 20
 [Signature] City Clerk

NOTES
 1. See Boundary Survey by Fred B. Loring for complete boundary information

LEGEND

SITE 1" = 60'

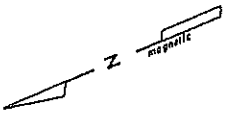
City of South Burlington

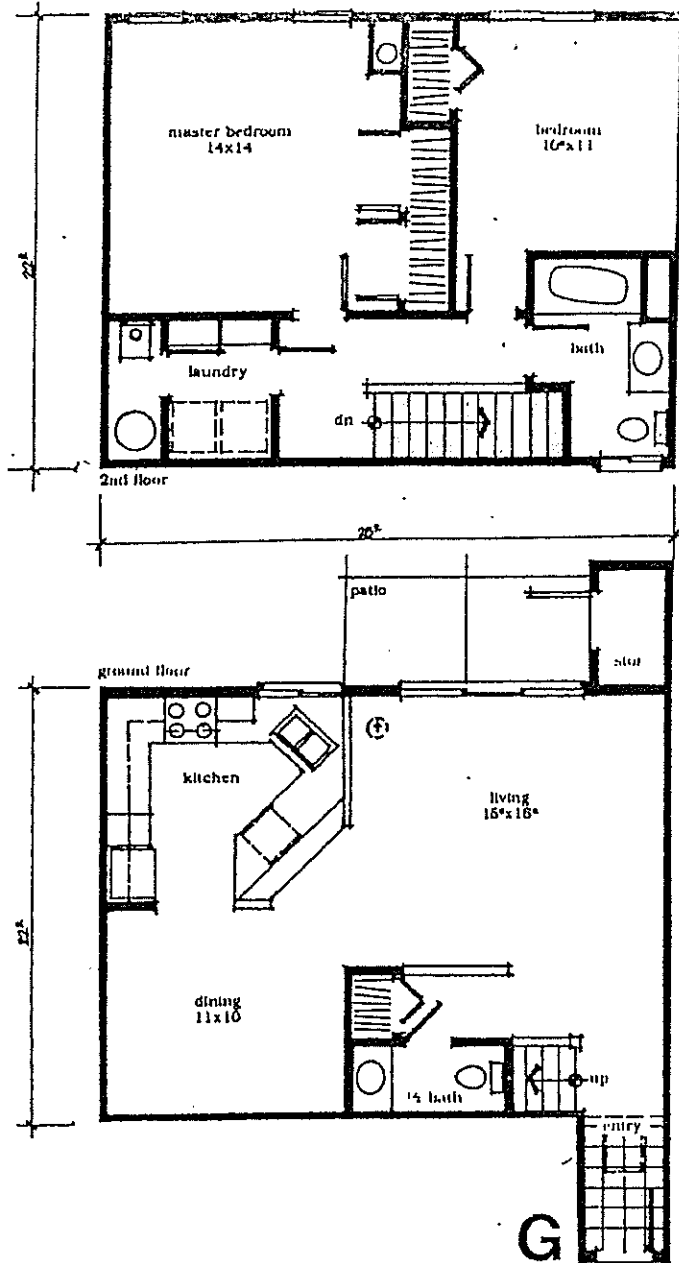
Instruction Co.

Kennedy
 Professional
 Associates

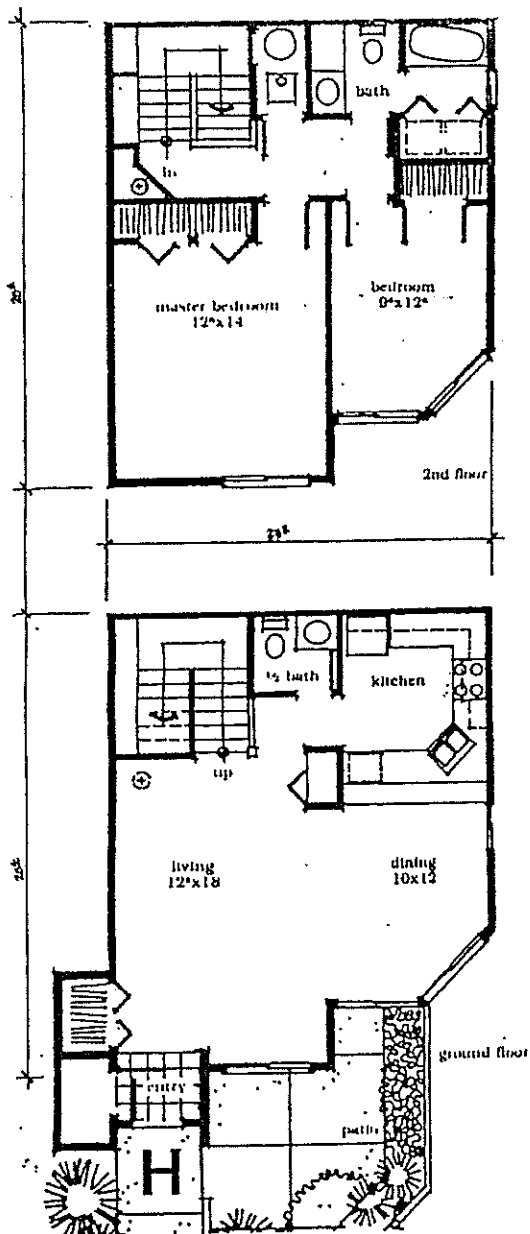
Larkin, et al

Sugar Tree

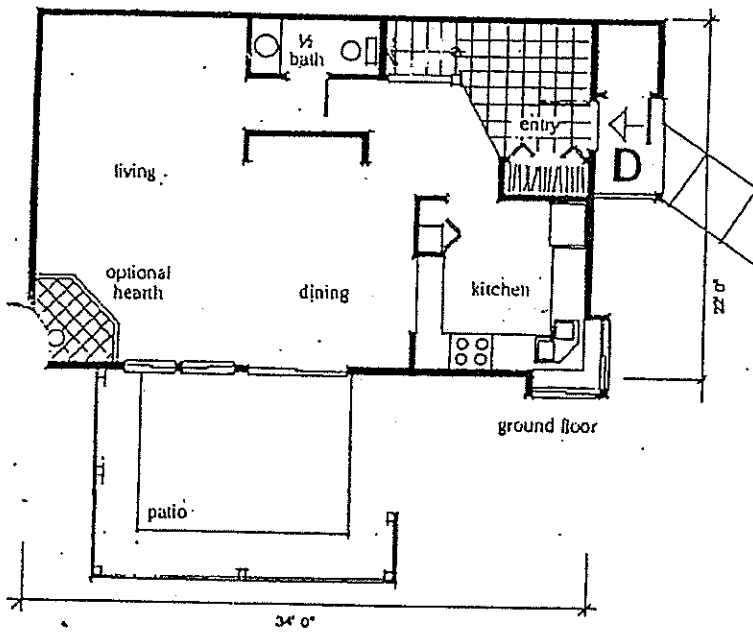
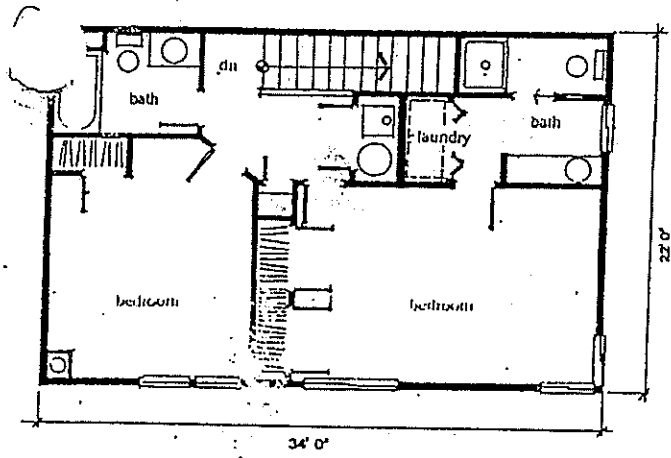




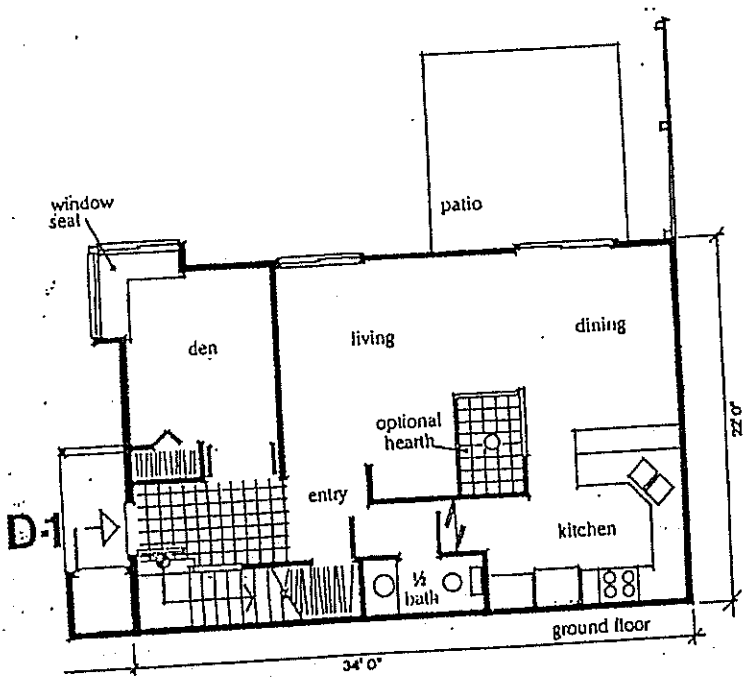
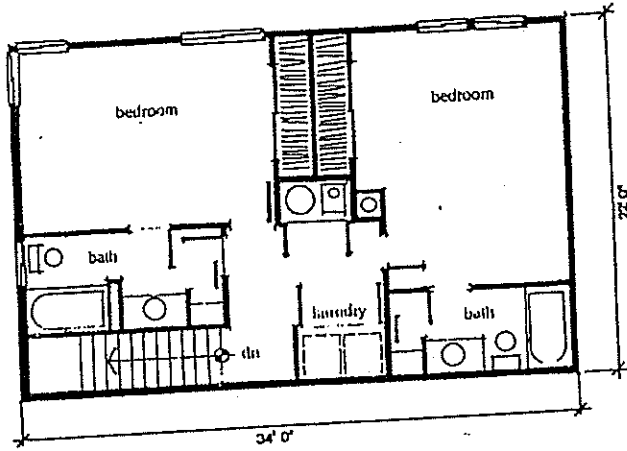
2 bedroom / 1½ bath
 townhouse 1290s.f.



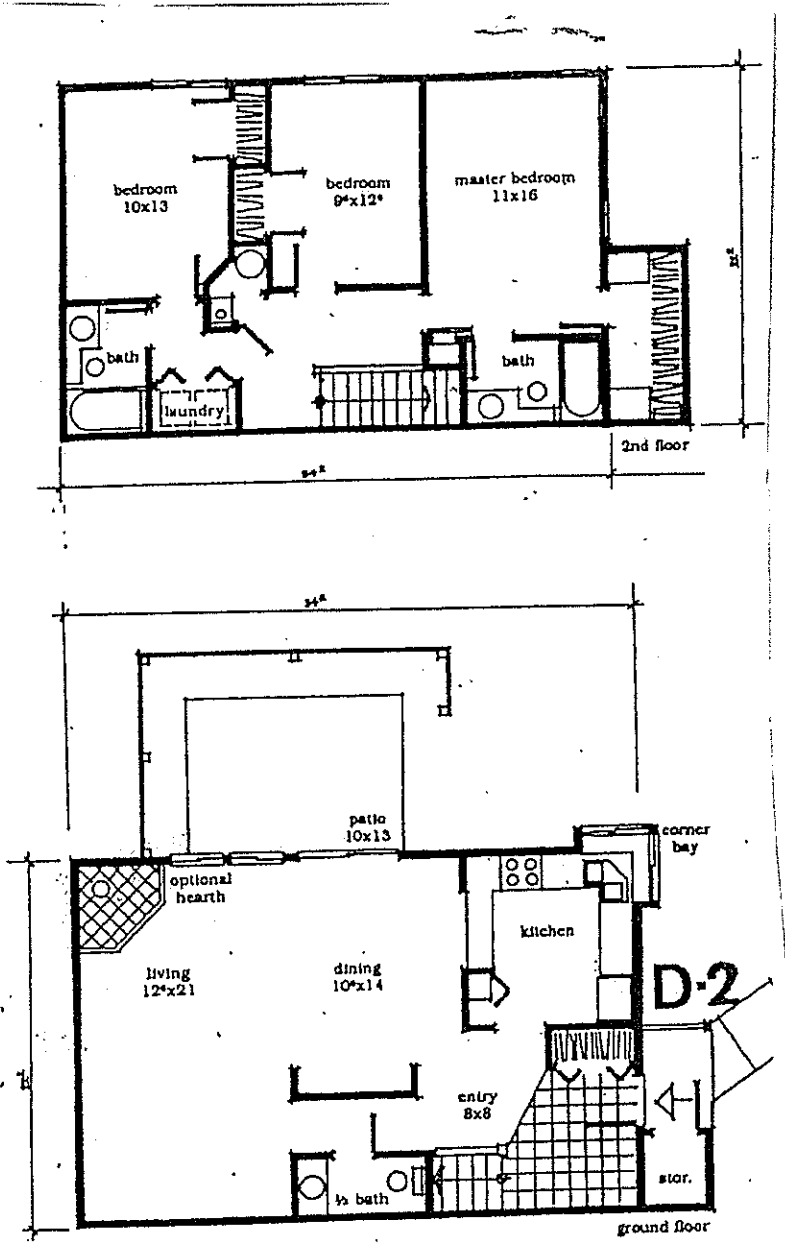
2 bedroom / 1 1/2 bath
 townhouse 1249 s.f.



2 bedroom/2½ bath
townhouse



2 bedroom/2½ bath
townhouse with den



3 bedroom / 2 1/2 bath
 townhouse 1572 s.f.