

# SITE 1" = 60'



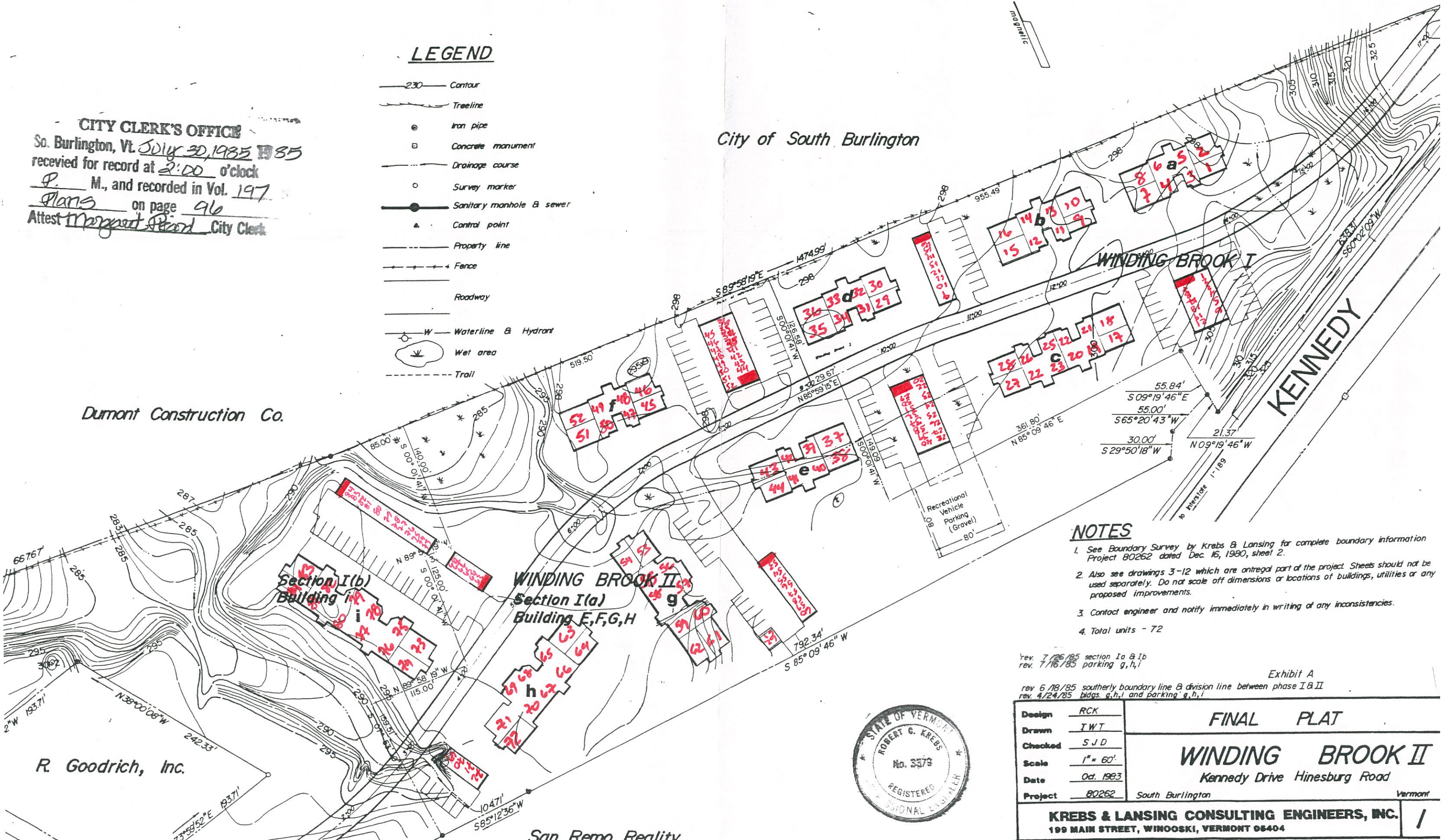
## LEGEND

- Contour
- Treeline
- Iron pipe
- Concrete monument
- Drainage course
- Survey marker
- Sanitary manhole & sewer
- Control point
- Property line
- Fence
- Roadway
- Waterline & Hydrant
- Wet area
- Trail

**CITY CLERK'S OFFICE**  
 So. Burlington, Vt. July 30, 1985 1985  
 received for record at 2:00 o'clock  
P. M., and recorded in Vol. 197  
Plans on page 96  
 Attest Margaret Stoddard City Clerk

City of South Burlington

Dumant Construction Co.



### NOTES

1. See Boundary Survey by Krebs & Lansing for complete boundary information Project 80262 dated Dec. 16, 1980, sheet 2.
2. Also see drawings 3-12 which are integral part of the project. Sheets should not be used separately. Do not scale off dimensions or locations of buildings, utilities or any proposed improvements.
3. Contact engineer and notify immediately in writing of any inconsistencies.
4. Total units - 72

rev. 7/26/85 section Ia & Ib  
 rev. 7/16/85 parking g, h, i

Exhibit A

rev. 6/18/85 southerly boundary line & division line between phase I & II  
 rev. 4/24/85 bldgs. g, h, i and parking g, h, i

R. Goodrich, Inc.

San Remo Realty



Design	RCK	<b>FINAL PLAT</b>
Drawn	IWT	
Checked	SJD	
Scale	1" = 60'	<b>WINDING BROOK II</b>
Date	Oct. 1983	Kennedy Drive Hinesburg Road
Project	80262	South Burlington Vermont
<b>KREBS &amp; LANSING CONSULTING ENGINEERS, INC.</b>		
199 MAIN STREET, WINOOSKI, VERMONT 05404		