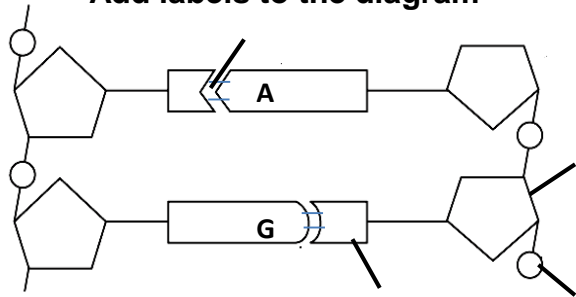


# DNA

COLUMN I	COLUMN II
1.3.1 Produced the first X-ray image of the DNA molecule	A: Rosalind Franklin B: Watson and Crick
1.3.2 Discovered the structure of DNA	A: Watson B: Crick
1.3.3 Monomers of nucleic acids	A: Nitrogenous bases B: Nucleotides
1.3.4 Replication takes place during	A: Protein synthesis B: Interphase of cell division

Add labels to the diagram



Give TWO observable reasons why this diagram represents a section of a DNA molecule

- 
- 

Differences between DNA and RNA

DNA	RNA

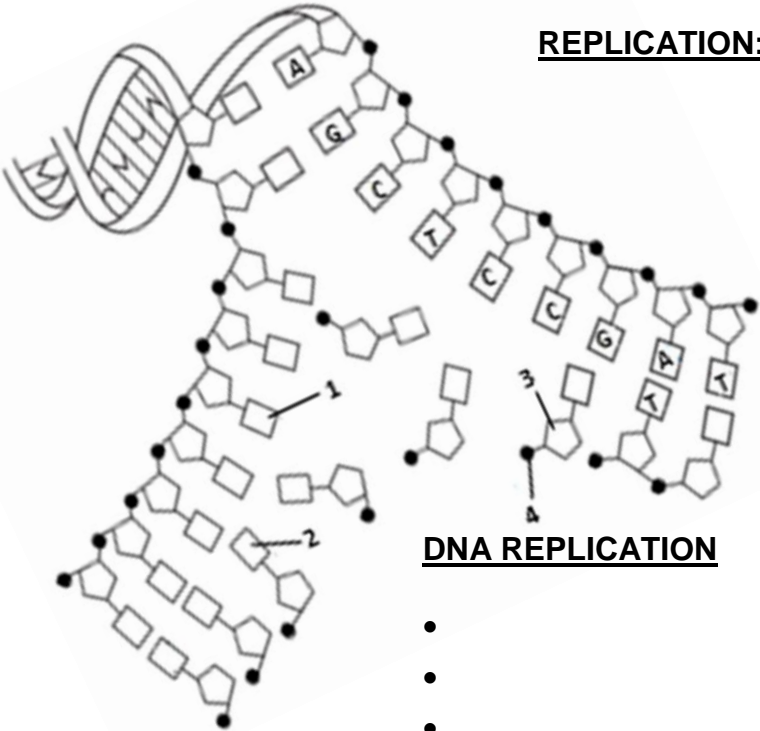
## DNA profiling

It can be described as .....

Every person except ..... has her/his own unique DNA profile.

DNA profiling can be controversial because

- 
- 



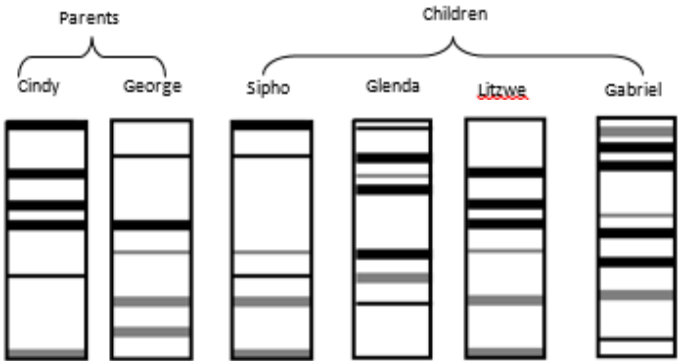
## DNA REPLICATION

- 
- 
- 
- 
- 
- 

## Significance of DNA replication

DNA replication is important because it:

- 
- 



DNA profiles of different individuals

Give THREE reasons why this diagram represents Replication

- 
- 
- 

Which TWO children are the biological offspring of Cindy and George?

..... and .....

Reason: .....

Other uses of DNA profiling

- 
-