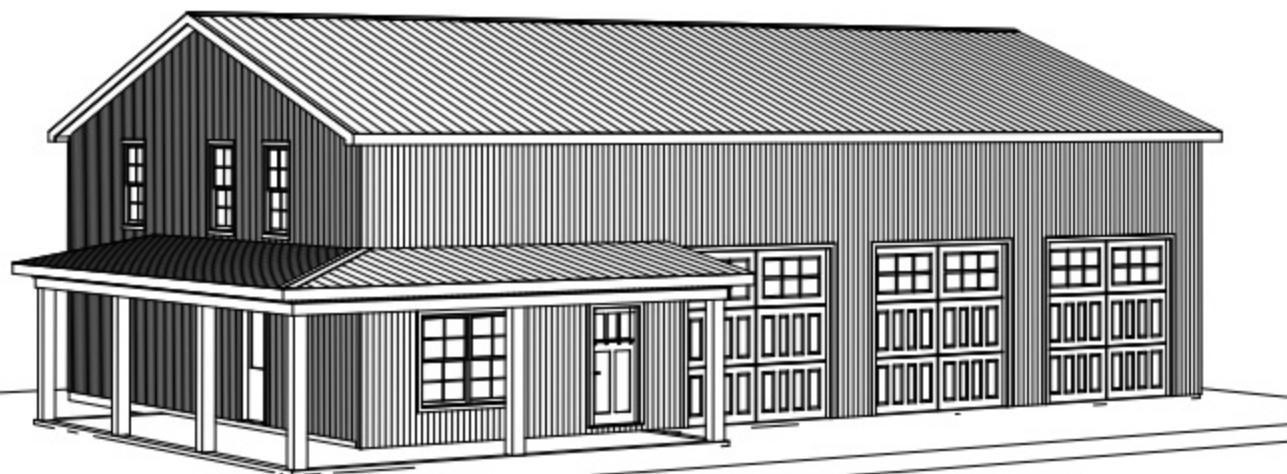
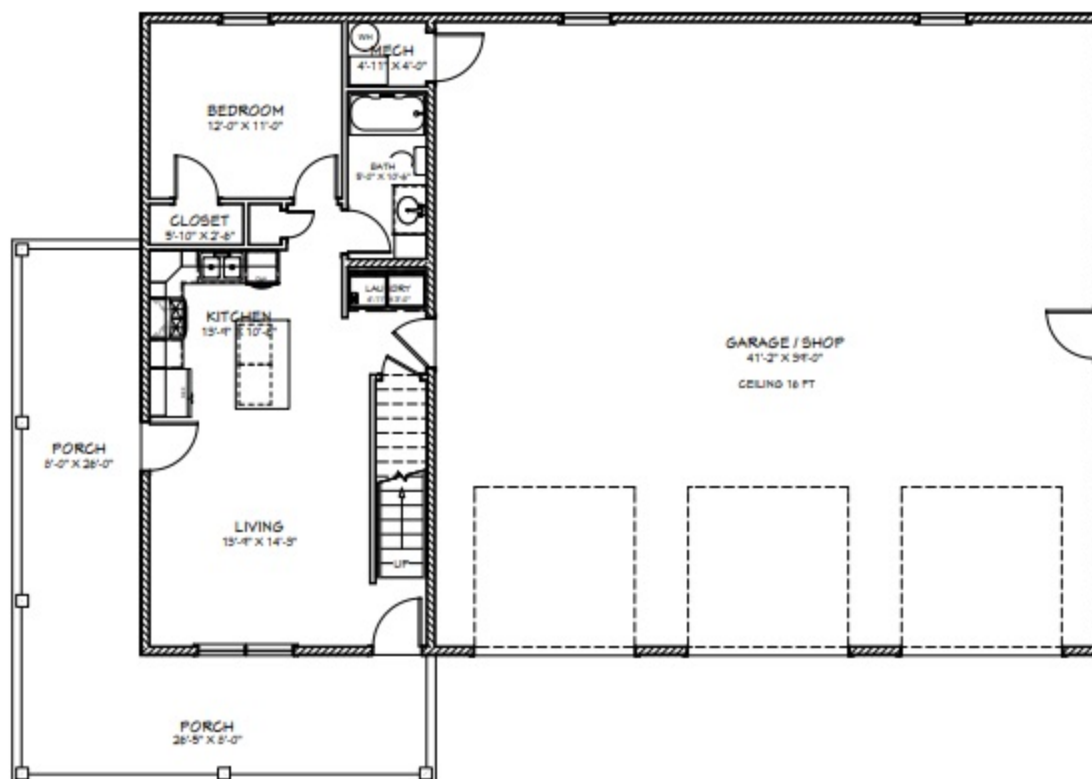


2nd Floor



Living Area- 1st Floor	732 sf
Living Area- 2nd Floor	683 sf
Porches	420 sf
Garage / Shop	1668 sf
Total Slab Sq Ft	2820 sf

BUILD IT YOURSELF KIT #21

BASIC SHELL PRICE: \$41,250.00*

- 40X60X16 BASIC SHELL
 - PORCHES AS SHOWN
 - 3 - 3' HOUSE DOORS
 - 8 - 3X5 VINYL WINDOWS
 - TRUSSES AT 2' ON CENTER ON HOUSE PART
 - TRUSSES AT 4' ON CENTER ON SHOP PART
 - STUDS AT 16" ON CENTER ON HOUSE PART
 - STUDS AT 24" ON CENTER ON SHOP PART
 - HOUSE WRAP
 - 143' OF INTERIOR FRAMING
 - SOFFIT AND FASCIA OVERHANG ON ROOF
 - 40 YR WARRANTY 29 GAUGE METAL - 19 COLORS AVAILABLE
- ADD \$10,500.00 TO UPGRADE TO OSB & PREMIUM BOARD & BATTEN METAL SIDING

*PLUS TAX & DELIVERY

ADDITIONAL FEES AND SURCHARGES MAY APPLY. PRICES ARE SUBJECT TO CHANGE WITHOUT NOTICE.