



DANPAL®
LIGHT ARCHITECTURE
SOLUTIONS FOR THE
BUILDING ENVELOPE

DANPAL®

LIGHT ARCHITECTURE SOLUTIONS FOR THE BUILDING ENVELOPE - OFFERING UNIQUE VISUAL EFFECTS AND OPTIMAL THERMAL COMFORT

Danpal® create exceptional light architectural systems for building envelopes. Perfect for facades, cladding, roofing, skylights and shading applications, Danpal® makes it easy to design natural daylight environments. A truly global company - with over 30 years' experience providing unique solutions to architects - Danpal® have supported a multitude of renowned architectural projects. We offer customers a complete system of innovative, premium quality and customised solutions that can be supplied ready-to-install.

CONTENTS

INTRODUCTION	4
□ FACADE SOLUTIONS	15
Controlite® for Facades	16
Danpatherm K12 / K7	18
Danpal® Facade System	20
□ CLADDING SOLUTIONS	23
Danpal® VRS System	24
🏠 SKYLIGHT SOLUTIONS	27
Controlite® for Roofing	28
Danpal® Roofing System	30
Danpal® Compact System	32
Danpavault	34
Danpalon® Industrial	36
🏠 OUTDOOR SOLUTIONS	39
Danpal® Roofing System	40
Danpal® Compact System	42
☂️ SHADING SOLUTIONS	45
Danpal® Louvre System	46
🏠 INTERIOR SOLUTIONS	49
Danpal® Interior and Decoration	50



Zénith, Limoges, France
Danpal® Single Glazing Facade System
Architect: Bernard Tschumi Architecte



THE ARCHITECTURE OF LIGHT



Danpal® offers a brilliant range of daylight harnessing architectural solutions designed for building envelopes. When you choose Danpal®, you choose light-transmitting architectural panelling systems with unmatched diversity and creative potential. Our customised and easy-to-install range of systems literally transform light - whether natural or artificial - into a powerful and versatile tool, for architectural creations that radiate inside and out.

Danpal® specialises in architectural innovation. For over 30 years, Danpal® has been a world leader in utilising the qualities of the sun for the benefit of architecture.

We Call It Light Architecture.

THE OPTIMAL BALANCE OF SOLAR AND THERMAL PERFORMANCE



NATURAL LIGHT & WELLBEING

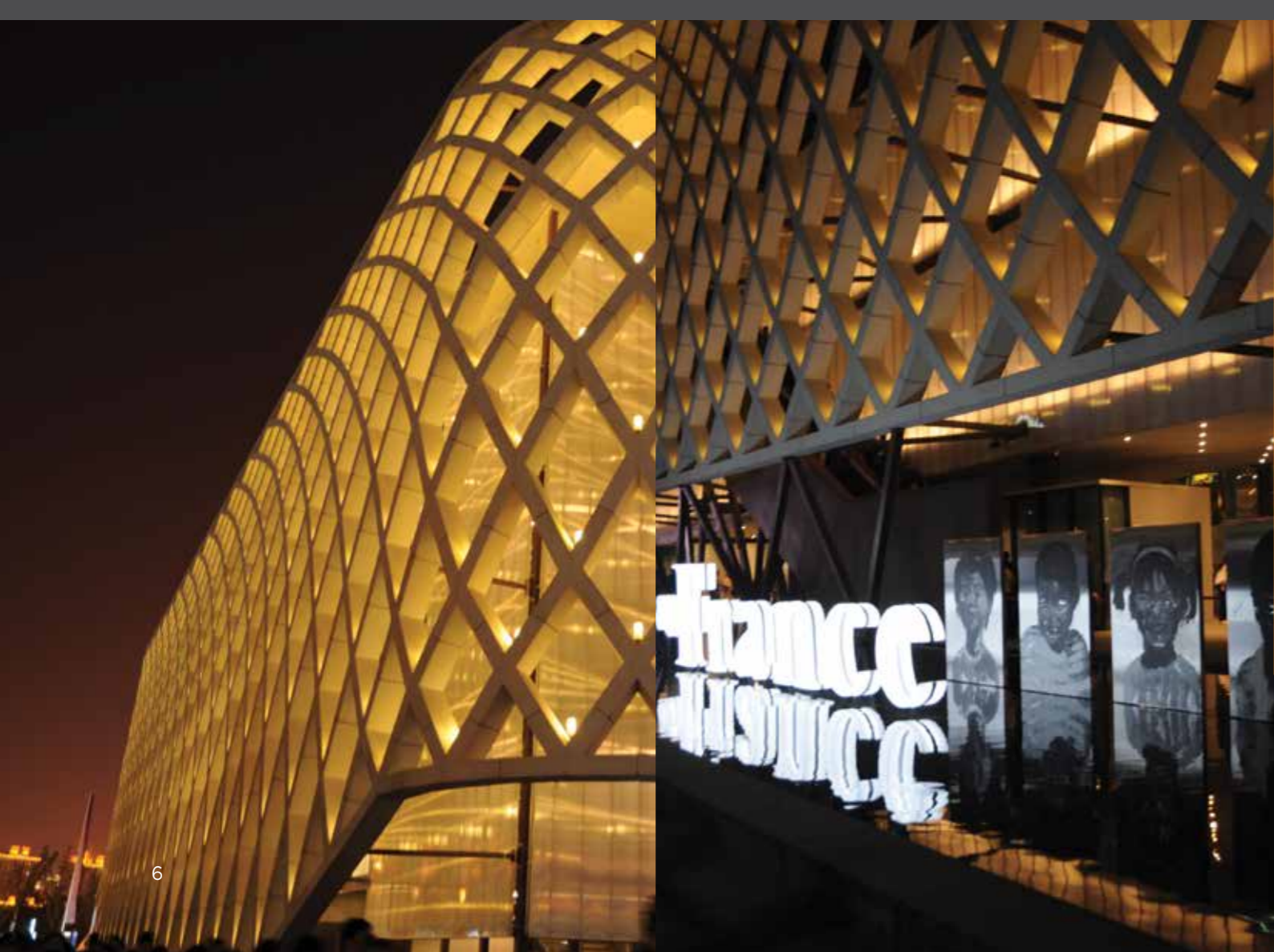
Natural lighting in structures is proven to be beneficial on many levels. Sunlight makes us happier and more relaxed and enables us to feel the time change during the day. It saves energy and enables us to view objects with greater clarity. It's no surprise architects are moving towards greater use of natural lighting that penetrates structures throughout the day. As people spend almost 90% of their time indoors, it is vital to create a comfortable solar and thermal environment for overall wellbeing.

PROVIDING GREATER COMFORT THROUGH VISUAL AND THERMAL EQUILIBRIUM

When it comes to architectural lighting, finding the equilibrium is key. Excess light results in undesired glare and intolerable ambient heat. Danpal® uses materials with superior flexibility, transparency, tonal qualities and insulating properties. Danpal® systems assure balanced thermal comfort, while their translucency ensures optimal visual comfort and even light diffusion.

Keystone House, Montreuil, France
Danpal® Single Glazing Facade System
Architect: M. Paillard

Elsa Enterprise Academy, Liverpool, UK
Danpal® Single Facade System
Architect: BDP Manchester



TRANSFORMING ANY STRUCTURE INTO A WORK OF ART

Architects are constantly seeking innovative solutions and raw materials to create the extraordinary. Since our establishment, Danpal's state-of-the-art systems have given architects the creative freedom to experiment with daylight in ever more experimental and inventive ways. Our extensive range of colours, textures and reflections, offers architects a rich palette for creating inspired structures that illuminate the user's experience - indoors and out, at any time of day.

Expo Shanghai 2010, China
Danpal® Single Glazing Facade System
Architect: Jacques Ferrier

ALWAYS
LIGHT YEARS
AHEAD



THE FIRST COMPANY TO DEVELOP THE TRANSLUCENT PANEL STANDING SEAM SYSTEM

A visionary in architectural technologies, Danpal® was the first company to develop the Danpalon® translucent panel standing seam system. We create unique daylight solutions for all types of building envelopes. For over three decades, Danpal's® systems have been used around the world in architectural projects spanning commercial, education, transport, health, sports and high-tech industries.

Danpal® solutions require minimal maintenance and offer excellent control of energy consumption, resulting in substantial life cycle cost savings. Danpal's ready-to-install systems help reduce on-site labour time, particularly in open environments or problematic conditions. A global leader in the design and manufacture of daylight systems with high thermal insulation properties and mechanical resistance, Danpal® enables architects to harness natural resources in an environmentally responsible and cost-effective manner.

Left: NAPA Fashion House, Korea
Danpal® Single Glazing Facade System, 16mm
Architect: Mark Fran/de plus

Top: Studio Offices, Korea
Danpal® Single Glazing Facade System, 16mm
Architect: Mark Fran/de plus



IN HARMONY WITH THE ENVIRONMENT

- **Solutions which limit energy consumption:** Our systems can adapt to variable climatic conditions for sensible management of available light.
- **Adapted to the HQE approach**, which has defined building certification. HQE targets both the interior of the building, i.e. the health and comfort of users, as well as integration into the environment, saving resources and reducing waste.
- **Partnerships with the ADEME** (Agency for Economic Development and Energy Control) and the CNRS (National Centre for Scientific Research) using precise measurements created in test cells to validate the thermal performance of the Danpatherm system.



- **Manufactured according to ISO 9001 and ISO 14001.**
- **Simplified maintenance** through high pressure cleaning with fresh water, with minimal soap or detergent required.
- **Recycling of off-cuts and packaging:** Danpal® panels and waste are 100% recyclable. 100% of our production off-cuts are regranulated by extrusion.
- **Low on-site fabrication and handling:** In 95% of cases we deliver systems that are manufactured to size (i.e. minimizing waste by eliminating off-cuts on site).
- **Non pollutant:** The Danpalon® system is certified as a non-pollutant and is suitable for use in sensitive fields such as the Agri-food sector.

Sports Complex, Epernon, France
Danpal® Single Glazing Facade System, Printed
Architect: Ligne 7 Architecture



DANPAL® SMART LIGHTING AND THERMAL SIMULATOR

PREDICT THERMAL AND SOLAR PROPERTIES OF ANY STRUCTURE

Well-designed buildings offer as much natural daylight as possible while still maintaining a comfortable internal environment. Danpal® provides the right tools for planning the most effective light openings – by integrating appropriate products, which exploit the optimal level of energy resources – anywhere in the world, any time of day.

By using state-of-the-art software, Danpal® provides lighting and solar energy simulations. Danpal® is unique in offering simulation solutions – reflecting its 30 year heritage as a specialist in daylight architectural innovation.

OPTIMAL PLANNING OF LIGHT ARCHITECTURE AND ENERGY USE

Danpal® products are built into the simulation software. Architects can monitor internal heat and light levels during preliminary design by testing the diffusing and insulating capacity of various Danpal® solutions. This ensures optimal energy efficiency and visual comfort.

TOTEXTH FireFit Club, Liverpool, UK
Danpal® Single Glazing Facade Systems
Architect: Cass Associates

CHOOSE THE PERFECT SYSTEM FOR YOUR ENERGY AND LIGHTING NEEDS

Danpal® simulations bring solar and energy efficiency to new levels and create flexibility in design. The simulation software enables architects to choose the perfect system design for their energy and lighting needs by “playing” with different product specification options and the structure area.

Taking into account the system’s physical characteristics (light transmission, solar factor, U value, etc.), the software creates a simulation of daylight and energy consumption, then provides a map showing the natural illuminance levels throughout the building.



FACADE SOLUTIONS

Danpal's translucent systems enable simple, quick and effective installation of facades. They are considered world leaders in their field.

- CONTROLITE® FOR FACADES
- DANPATHERM K12 / K7
- DANPAL® FACADE SYSTEM



CONTROLITE® FOR FACADES

INTELLIGENT DAYLIGHTING SYSTEM

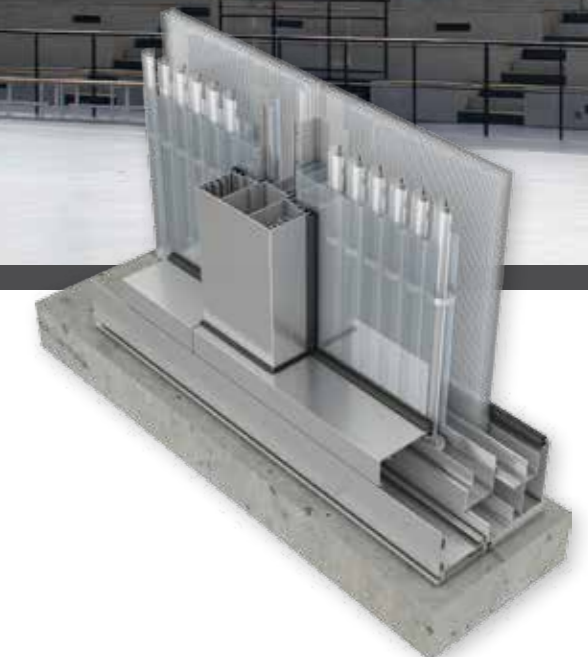
Light Optimisation for Facades

Transform your facade into a dynamic wall of light. Controlite® features rotating louvres that adjust their position throughout the day to transmit the optimal amount of daylight. This intelligent system balances light levels and solar heat gain to transmit uniformly diffused light, creating comfortable indoor environments in even the harshest climates. Controlite® offers a dynamic, cost-effective solution which significantly lowers energy consumption and integrates sustainable design.



SYSTEM BENEFITS

- High thermal insulation
- No visible aluminium connections on the outside
- Expansion of the polycarbonate
- Low maintenance





DANPATHERM

UNITIZED LARGE-SPANNING HIGH INSULATION SYSTEM FOR FAÇADES

Light & Insulation

Danpatherm is a unique, factory assembled building system designed to achieve high thermal performance and good light transmission with superb spanning capabilities. It is quick and easy to install, reducing labour costs and construction times. Danpatherm can be integrated with a complete LED lighting system, creating a radiant wall during the day and a light box at night.



Camille Fournet Manufacturing, Tergnier, France
Danpatherm Façade System
Architect: Atelier Boris Cindric

SYSTEM BENEFITS

- Exceptional thermal insulation
- Factory pre-assembled CASSETTE
- Quick and easy installation
- Clean look - no visible aluminium
- Variable levels of light transmission
- Unparalleled wind load resistance

Saint Thomas Church, Vaulx-en-Velin, France
Danpatherm Façade System
Architect: [Siz'-ix]

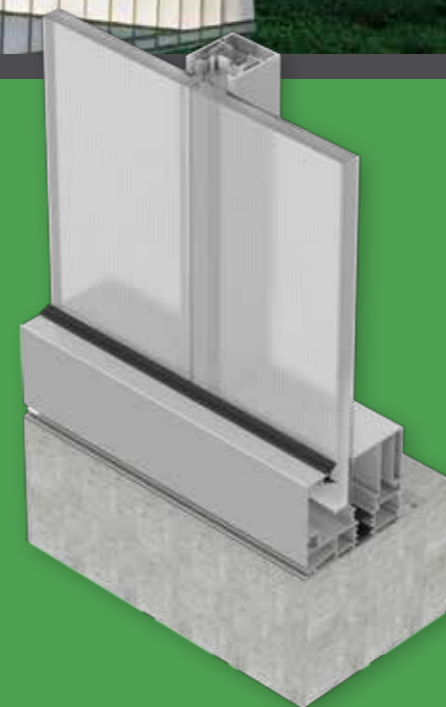


DANPAL® FACADE SYSTEM

SINGLE GLAZED TRANSLUCENT FACADE

The Freedom to Create Inspired Facades

Danpal® Façade is a translucent system which integrates Danpalon® panels with glazing profiles and finishes. Designed to be installed on various types of structure envelopes, Danpal® Façade offers a multitude of benefits. It is lightweight and provides excellent resistance to impact and weather. It also offers UV protection, superior air and water tightness, high security and comfortable light diffusion. Our extensive range of colours, textures, finishes, reflections, and lighting offer architects a rich palette to create inspired facades - illuminating the user's experience with sunlight by day, then offering spectacular light walls radiating internal light in the evenings.



SYSTEM BENEFITS

- High impact resistance
- UV protection
- Comfortable light diffusion
- Lightweight
- Freedom of design
- Superior air and water tightness
- Highly secure
- Certified system
- Easy installation
- Made with Microcell technology



CLADDING SOLUTIONS

The Danpal® cladding system provides exceptionally light, visually attractive and waterproof protection with superior insulation.

- DANPAL® VRS SYSTEM



DANPAL® VRS

VENTILATED RAINSCREEN SYSTEM

An Appealing Exterior with Insulating Efficiency

The principle of Danpal® VRS is to provide a full system incorporating the trusted Danpalon® panel that will fully protect the insulation. Based on natural ventilation by means of an air gap, the convective motion behind the panels keeps the insulation dry and maintains its efficiency through time.

SYSTEM BENEFITS

- Lightweight
- 100% waterproof
- Quick, easy and cost effective installation
- Unparalleled design & choice of colours
- Significant panel lengths (up to 12.0m standard lengths, longer upon request)
- Environmentally friendly
- No waste



International Student Residence, Reims, France
Danpal® VRS
Architect: Jean-Michel Jacquet



SKYLIGHT SOLUTIONS

Danpal's skylight systems allow you to explore new possibilities for designing buildings filled with light – with control of light intensity and energy consumption together with flexible installation.

- CONTROLITE® FOR ROOFING
- DANPAL® ROOFING SYSTEM
- DANPAL® COMPACT SYSTEM
- DANPAVAULT
- DANPALON® INDUSTRIAL

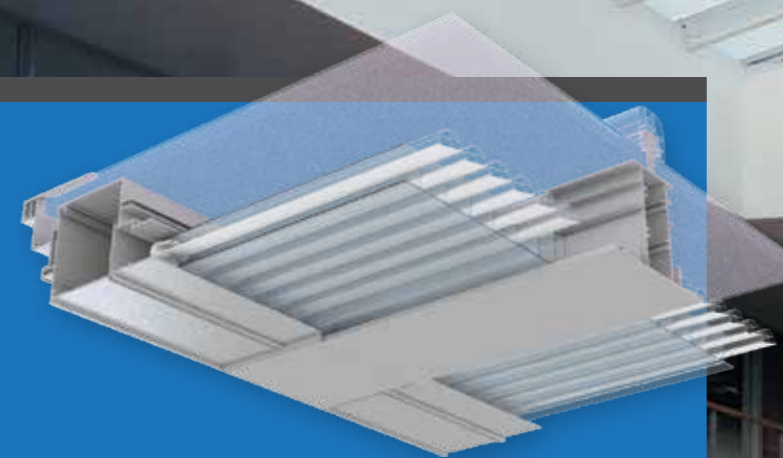


CONTROLITE® FOR ROOFING

INTELLIGENT DAYLIGHT SYSTEM

Light Optimisation for Roofing

Controlite® features rotating louvres that adjust their position throughout the day to transmit the optimal amount of daylight. This intelligent system balances light levels and solar heat gain to transmit uniformly diffused light, creating comfortable indoor environments in even the harshest climates. Controlite® offers a dynamic, cost-effective solution which significantly lowers energy consumption and integrates sustainable design.

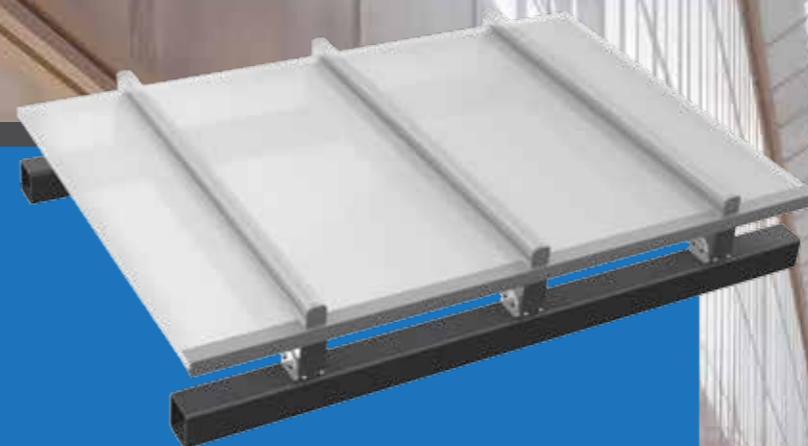


SYSTEM BENEFITS

- Transmits uniformly diffused light
- Creates a comfortable indoor environment
- Up to 93% of solar heat gain can be blocked
- Reduced rain noise
- Higher thermal insulation
- Free thermal expansion
- Mechanisms are easy to reach and maintain

Synthesis Cap, Saint-Cyr-sur-Loire, France
Controlite® for Roofing
Architect: Studio Architecture





DANPAL® ROOFING SYSTEM

MODULAR GLAZING SOLUTION FOR ROOFS

Get Natural Light from Above

Danpal® Roofing is a dry glazed translucent system available in a variety of designs, suitable for installation above or below various types of structures (according to engineering and design requirements). The system contains a variety of snap-on interlocking dry-glazed connectors made of polycarbonate or aluminium.

Danpal® Roofing systems are suitable for a wide range of weather conditions and offer high impact resistance. The large variety of aspects, colours, finishes and special effects provide a spectacular range of creative options.

SYSTEM BENEFITS

- Easy and fast installation
- Free floating system allowing full thermal expansion
- Good resistance to wind and snow loads
- Flexible system suitable for many types of roof designs
- Lightweight

Namseoul Grace Church Missionary Center, Korea
Danpal® Roofing System
Architect: Shinslab Architecture

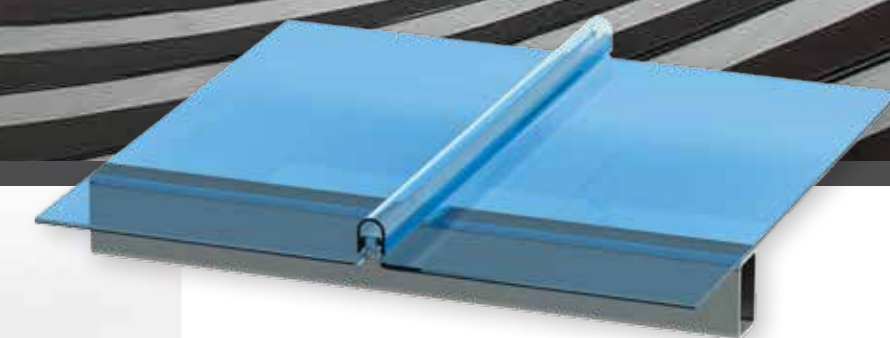


DANPAL® COMPACT SYSTEM

TOTAL TRANSPARENCY WITH HIGH IMPACT RESISTANCE

Transparency Without Limits

Enjoy the appearance of glass together with all the advantages of polycarbonate. Danpalon® Compact is a 4mm thick solid panel that provides a 'glass-like' appearance, together with strength, insulating qualities, flexibility, curving ability, low weight and UV protection. The Danpalon® panels' standing-seam connection system allows architects complete freedom to design spectacular glazed areas of unlimited size, angle or colour. Up to 12.0m long panels are supplied. Available as straight panels in a range of colours up to 12 metres long, they can be easily cold curved on site - adapting to all creative transparency ideas.



SYSTEM BENEFITS

- Pure transparency
- Lightweight
- Waterproof
- Easy installation
- Impact resistance
- Long panels, curvable on site



DANPAVAULT

BARREL VAULT SKYLIGHT SYSTEM

The Sky is No Limit

The Danpavault Barrel Vault Skylight System combines all the advantages of Danpalon® together with a skylight of unlimited length, offering easy integration with various roof types including profiled metal and concrete.

Danpavault's unique structure transmits an even diffusion of natural light, delivering superior durability, thermal insulation and extended UV protection.

The Danpavault system can be installed as a self-supporting skylight or over a metal structure covering a large range of radii and spans. It can be installed over small or large spans by adding aluminium framing options, such as spacers, bars or connectors.



SYSTEM BENEFITS

- Unlimited length
- Allows a greater amount of light compared to flat light openings per area of roof light opening
- Self supporting skylight
- Easy to install and compatible with many roof types
- Excellent light diffusion
- 100% watertight
- High load capacity

Plaza de Toros de Illescas, Toledo, Spain
Danpavault System
Architect: Diego Garteiz from DGM Arquitectos



DANPALON® INDUSTRIAL

OPTIMISED LIGHT FOR INDUSTRIAL STRUCTURES

Superior Light and Energy Efficiency for Industrial Structures

Danpalon® Industrial provides natural light to industrial structures. The panel strips transmit natural light throughout the day to factories and industrial plants. The panels provide an easy connection to industrial light openings; whether to existing structures, as single panels, or as an entire unit.



SYSTEM BENEFITS

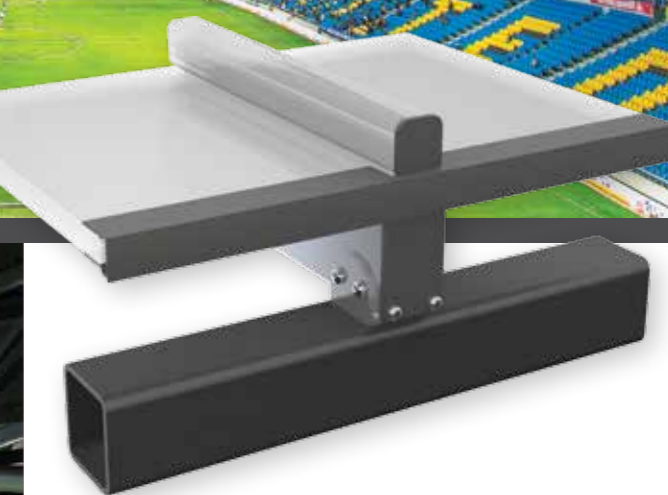
- 100% waterproof
- High impact resistance
- Lightweight
- Easily connects to existing panels
- Outstanding light transmission
- Excellent thermal insulation
- Quick, easy and cost effective installation
- Strong performance
- Superior air and water tightness



OUTDOOR SOLUTIONS

Danpalon® Outdoor Solutions provide high impact resistance, flexibility and an exciting range of creative possibilities.

- DANPAL® ROOFING SYSTEM
- DANPAL® COMPACT SYSTEM



DANPAL® ROOFING SYSTEM

MODULAR GLAZING SOLUTION FOR OPEN ROOFING

Enjoy Natural Light with the Benefits of Physical and UV Protection

Danpal® Roofing is a dry glazed translucent system available in a variety of designs suitable for installation above or below various types of structures (according to engineering and design requirements). The system contains a variety of snap-on interlocking dry-glazed connectors made of polycarbonate or aluminium.

Danpal® Roofing systems are suitable for a wide range of weather conditions and offer high impact resistance. The large variety of aspects, colours, finishes and special effects provide a spectacular range of creative options.

Danpal® Roofing provides a variety of benefits for open roof structures: lightweight, comfortable light diffusion, UV protection and flexibility of installation onto rounded and amorphous structures. It is sealed from the outside, while providing visibility from the inside.

SYSTEM BENEFITS

- Easy and fast installation
- Free floating system allowing full thermal expansion
- Good resistance to wind and snow loads
- Flexible system, suitable for many types of roofs

Soong-eui Arena Park Stadium, Korea
Danpal® Roofing System
Architect: Rosseti Architects and Mooyoung



DANPAL® COMPACT SYSTEM

TRANSPARENCY WITH HIGH IMPACT RESISTANCE

Total Transparency. Total Strength. Total Curving Ability

Enjoy daylight together with the advantages of physical and UV protection. Benefit from the appearance of glass and all the advantages of polycarbonate. Danpalon® Compact is a 4mm thick solid panel that provides a 'glass-like' appearance, together with strength, insulating qualities, flexibility, curving ability, low weight and UV protection. The Danpalon® standing-seam connection system allows architects complete freedom to design spectacular glazed areas of unlimited size, angle or colour. Up to 12.0m long panels are supplied. Available as straight panels in a range of colours, it can be easily cold curved on site - adapting easily to all creative transparency ideas.



SYSTEM BENEFITS

- Total transparency
- Lightweight
- Waterproof
- Easy installation
- Impact resistance
- Long panels
- Curvable on site
- SOCOTEC (EN accredited) certified system



SHADING SOLUTIONS

Danpal® Shading Solutions offer ultimate control over thermal and solar dynamics, as well as superior durability and UV protection. Available in a wide variety of colours and finishes to spark your imagination.

- DANPAL® LOUVRE SYSTEM



DANPAL® LOUVRE SYSTEM

OPERABLE TRANSLUCENT SHADING SYSTEM

The Creative Way to Control Light & Heat

Danpalon® Louvre is a translucent shading system that provides maximum control over light and heat, extended UV protection and high impact resistance. Users can adjust the louvres to create their desired balance of light and shade. With Danpal®, shading becomes a creative tool to dynamically transform the exterior. Available in a variety of colours, finishes and effects, it gives an appealing, innovative exterior design to new or refurbished buildings.



SYSTEM BENEFITS

- Lightweight
- Easy fabrication on-site or off-site
- Quick, easy and cost effective installation
- Recyclable materials
- High security
- Extended UV protection
- Wide variety of colours and finishes

Piscine, La Chapelle St-Luc, France
Danpal® Louvre System, 16mm
Architect: BLV



INTERIOR SOLUTIONS

Innovative interior solutions with superior
light and visual appearance.

- DANPAL® INTERIOR AND DECORATION

DANPAL® INTERIOR AND DECORATION

INNOVATIVE SOLUTIONS FOR INTERIORS WITH A UNIQUE RANGE OF DISTINCTIVE VISUAL APPEARANCES



Create New Atmospheres

Danpal® Interior Solutions enable designers to explore new aesthetic dimensions, creating revolutionary spaces transformed by light. Danpal® brightens a multitude of interior spaces: walls, partitions and interior ceilings open up under the effect of the light setting to create a unique ambience. Danpalon's unique Multicell structure provides exceptional quality of light, a rich non-industrial visual appeal and superior durability.

With Danpal®, architects can create partitions that evoke both intimacy and openness, due to their semi-transparent look. Danpalon's interior ceilings make the ceiling an integral part of the design space. Our wide range of lighting options bring increased depth and illuminate the user's experience. Use your creativity to make light an attraction with Danpal® Interior.



SYSTEM BENEFITS

- Wide range of colours and textures
- Unlimited design flexibility
- Lightweight
- Easy to install
- Allows for both open and intimate spaces

Prada Shop, New York, USA
Danpal® Interior and Decoration

IDEAL FOR CUSTOMISED AND UNITISED SOLUTIONS



TURNING YOUR VISION INTO REALITY

For any application - whether it's a transportation center, sports hall, school building or shopping mall - Danpal's systems provide unique advantages within bespoke solutions.

- Bold design to complement all architectural needs.
- Superior natural light properties.
- Excellent thermal insulation.
- Top loading performance.
- Easy and efficient installation.
- Top quality and long term product lifetime service.

OUR FULL SERVICE OFFERING

- Project engineers and the sales force in your region will accompany you and follow up your projects, from their inception to completion.
- Our design office will assist and guide you in the implementation of the most suitable solution for your specific needs.
- The order processing and preparation service offers customized orders, reinforced packaging, accurate labelling and impeccable delivery.
- Our support service will promptly respond and assist you in finding solutions for your on-site risks.
- We offer a full material warranty and are committed to meeting our customers' deadlines.

