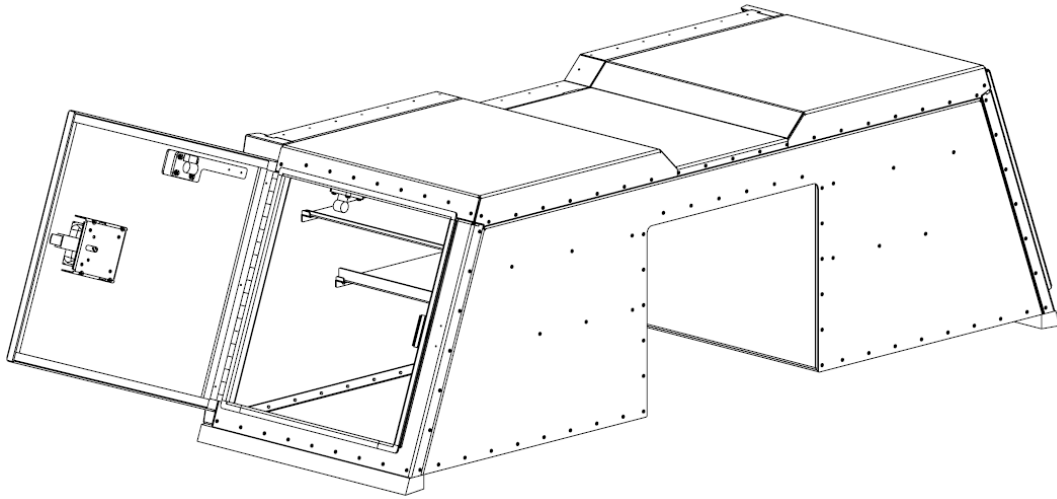




OWNERS MANUAL
MODEL TR-747-3-20-HM



ATTENTION: Please take the time to read and understand this manual completely. There are important instructions and warnings that you need to understand of before using this product. This product is covered under the following patents: US 9,499,106, US 10,000,165

Tool Rig LLC
6140 S Gun Club Rd
Ste. K6-375
Aurora CO 80016

<https://toolrig.com/>

Door latch key codes: _____

Powder coating code: _____

Table of Contents:

<u>Warnings</u>	<u>Page 2</u>
<u>Tools Required</u>	<u>Page 2-3</u>
<u>Parts Included</u>	<u>Page 3-4</u>
<u>Fairing Installation Instructions</u>	<u>Page 4-5</u>
<u>Toolbox Installation</u>	<u>Page 6</u>
<u>No Drill Clamp Mounting</u>	<u>Page 7</u>
<u>Through the Bed Rail Mounting</u>	<u>Page 8</u>
<u>Riser/Feet Installation</u>	<u>Page 9</u>
<u>Ratchet Strap Tie Down Bracket Installation</u>	<u>Page 10-11</u>
<u>Shelf Installation</u>	<u>Page 11</u>
<u>Toolbox Operation, Door/Hatch Spring Operation</u>	<u>Page 12</u>
<u>REPLACEMENT RIVET SCREWS</u>	<u>Page 12</u>
<u>Maintenance, Care, Cleaning</u>	<u>Page 13-14</u>
<u>Panel Parts, Dimensions</u>	<u>Page 16</u>
<u>Warranty, Return, Liability Policies</u>	<u>Page 17</u>



DO NOT store any hazardous, poisonous, flammable or explosive materials of any kind in the toolbox. This toolbox is designed for tools and gear only.

“Notice”

The side door latches are equipped with threaded holes on the inside of the door. There is a slotted hole in the latch bracket intended for a bolt to be installed so the door latch can be opened from the inside. The latches are shipped without these bolts (not Included) and can be installed by the purchaser if desired.

“Warning” ALUMINUM BEDS

If your pick-up bed is made out of aluminum please follow manufacturers recommendations for installing aftermarket products. If drilling through the bed rails you may have to seal the holes with zinc primer.

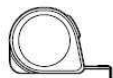


“Warning” DO NOT OVERLOAD TOOLBOX

The shelf ratings listed are engineered for the toolbox only. Remember the toolbox sits atop the vehicles bed rails. You must consult with the vehicle manufacturer for the bed rail weight ratings. If the toolbox is overloaded beyond the vehicles bed rail weight limit, damage to your vehicle’s bedrails may occur. Tool Rig LLC is not liable for damage of any kind caused by overloading the vehicles engineered weight limits.



Installation Tools Needed



Tape Measure



Safety Goggles



Gloves

Drill- (May not be needed depending on application)

Long 5/16" Drill Bit (may not be needed depending on application)

Masking Tape

Phillips screw driver (*Hand tool only, do not use power tools*) Tighten all screws hand tight then an additional ¼ turn.

1/2" wrench and socket wrench.

What's included, PARTS:

PART	DESCRIPTION	QUANTITY	PART NUMBER
A	Mounting Kit, Easy Quad Clamps	M8 1.25 X 75mm INCLUDED	4ea. TR-QUAD-MNT-ND
B	Mounting Kit, Through Bed Rails	5/16" X 1 1/4" INCLUDED	4ea. TR-MNT-KIT-1.25
C	Door Latch Keys	SouthCo INCLUDED	2ea. TR-KEY-SC
D	Upper Shelfves	INCLUDED	2ea. TR-UPPR-SLF
E	Lower Shelves	INCLUDED	2ea. TR-LOW-SLF
F	Side Wind Fairings	OPTIONAL	2ea. TR-SD-FRN
G	Risers/FEET	OPTIONAL	2ea. TR-FT-RSR
H	Riser/FEET Bolts	1/4" X 1 1/4" LAG OPTIONAL	6ea. TR-RSR-BOLTS
I	Top Fairing	OPTIONAL	1ea. TR-TOP-FRN
J	Ratchet Strap Tie Down	OPTIONAL	2ea. TR-TIE-DWN-SET
K	Rivet Screws	6-32 X 7/16" INCLUDED	4ea. TR-RVT-SCRW
L	Upper Shelf Clevis Pins	5/16"X 1" OPTIONAL	2ea. TR-CLV-PINS



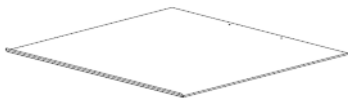
A



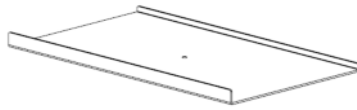
B



C



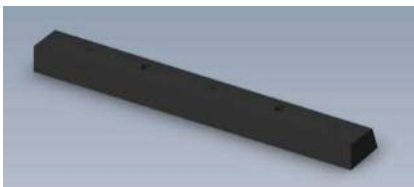
D



E



F



G



H



I



J



G, H

K

L

Note: All fairing hardware is already installed in the toolbox. Remove fairing screws from the cab side of the toolbox to install the side and top fairings. Leave screws in if not installing fairings.

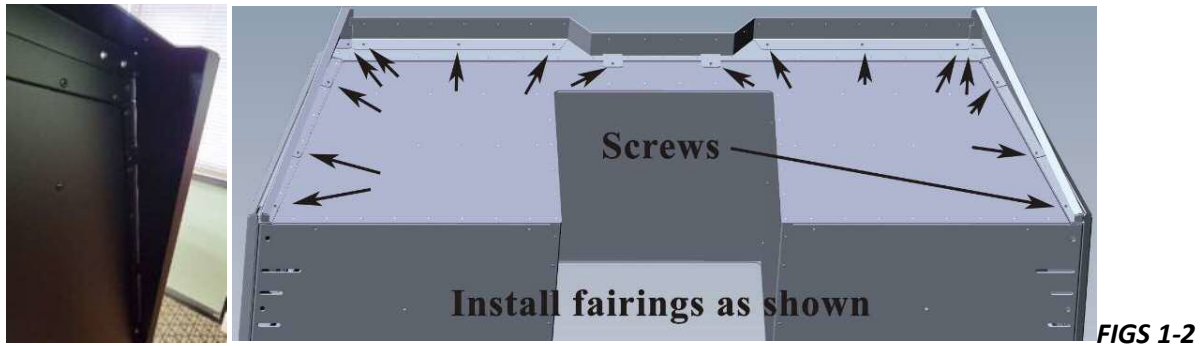


Unpackaging; Use scissors to cut the stretch wrap and foam sheets off of the product. Do not use a razor knife. Open side doors and remove parts, remove screws and nuts holding shelves and side fairings down.

FAIRING INSTALLATION; Parts F, I

INSTALL WIND FAIRINGS BEFORE PLACING TOOLBOX ON TRUCK; FIG 1-2

1. Install TOP fairing first. The screws are already installed in the toolbox, (16ea.). Remove screws from toolbox. ***Install the 2 outside top fairing screws first, then the 2 center screws.*** You will have to install the bottom side fairing screws with the screw driver at an angle. If you have any issues with the screw hole alignment ***see page 5, FIG 2a.***
2. Line up fairings and install screws. ***DO NOT OVERTIGHTEN.*** Hand tighten only, plus a ¼ additional turn.
3. If fairings are not being used you may use the threaded holes and screws for other accessories such as light brackets ext. We recommend using long screws with nuts installed inside the toolbox for accessories.
4. If you purchased just the side fairings then just leave the top fairing screws in place. The top fairing is not required and is optional.



TOP FAIRING INSTALLATION (screw hole alignment);

1. **Install the 2 outside screws first, left-side and right-side ends. Then the 2 center screws.**
2. All the screws should line up, install the remaining screws. After all the screws have been started, snug tight then ¼ turn. **(DON NOT OVERTIGHTEN)** If the screws do not line up, follow the next steps.
3. If any of the remaining screw holes do not align properly the bending's have become skewed. Simple adjustment required.
4. On either side of the fairing look and see if the fairing screw holes need to go outward or inward.
5. **If the fairing holes need to go outward the simply bend down on the first bending from the center and then bend up on the second bending. This will make the fairing side longer and the holes will line up. See FIG 2a**
6. **If the fairing holes need to go in towards the center then simply bend UP on the first bending from the center and then bend DOWN on the second bending. This will make the fairing side shorter and the holes will line up. See FIG 2a**



FIG 2a

TOOLBOX INSTALLATION



INSTALLATION, MAKE SURE THE VEHICLE IS ON LEVEL GROUND

LINE UP TOOLBOX to CAB and bed rails; *FIG 3-4*

1. Cut off stretch wrap and foam sheeting with scissors.
2. Open both side hatch doors and remove all parts. Shelves are bolted to the bottom of the toolbox. Remove screws and nuts. The top fairing if ordered is packaged on the outside to of the toolbox.
3. If you purchased fairings, **INSTALL NOW**, before placing toolbox on bed rails. **SEE PAGE 4**
4. Place toolbox in the bed of the pickup. We suggest 2 people lift the box and set on the bedrails near the cab of the truck.
5. Center the toolbox. Stand behind the vehicle and check the alignment of the toolbox and cab. Allow 1 ½ inches between toolbox and cab.

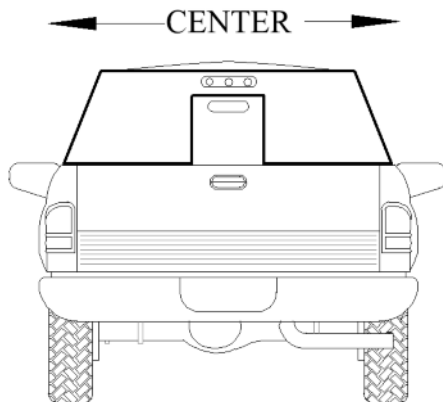


FIG 3

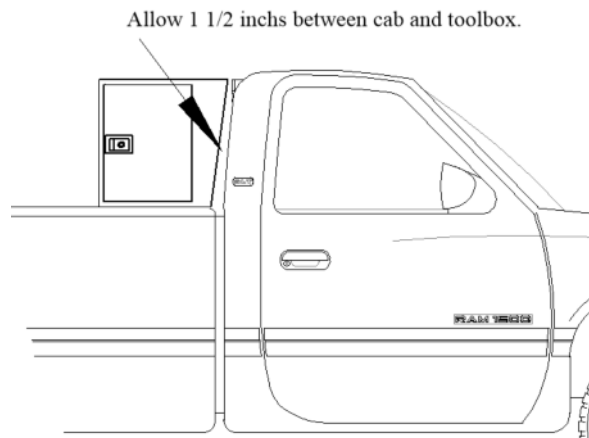


FIG 4

6. Once toolbox is aligned mark off with masking tape on the bedrails. Tape corners on bed rails to make sure toolbox stays aligned while installing mounting hardware.



NOTE: If your pickup is fitted with a drop in bed liner it may need to be drilled, trimmed or cut for proper installation of the toolbox.

NO Drill Quad Mount Clamps Installation **FIG 5 PART A**

1. Locate quad mount no drill clamps. Locate mounting slotted holes inside toolbox. Find which holes line up with the sides of the bedrails. If no holes or slotted holes line up, then you must drill a 5/16" holes for the best mounting clamp location (**Drill through the toolbox only**). Check under the toolbox for any bulkheads or anything that may be in the way of the mounting clamps. This process may take some ingenuity on your part. Some vehicles line up easily and some do not. The toolbox must be secured with all four mounting clamps. Install the bolt and fender washer through the **INSIDE** of the toolbox. Thread the jam nut next (**UNDER THE BED RAIL**), then the threaded clamp (**UNDER THE BED RAIL**), then the nyloc nut (**UNDER THE BED RAIL**).
2. Tighten the bolts to approximately 7-foot pounds. (*Hold the clamp in one hand while tightening to keep clamp aligned*). **FIG 7**
3. Tighten the Jam Nuts down on top of the clamp. **FIG 5**
4. Tighten the Nyloc lock nuts up on the bottom of the clamp. **FIG 5**
5. Excess bolt threads may be cut off.

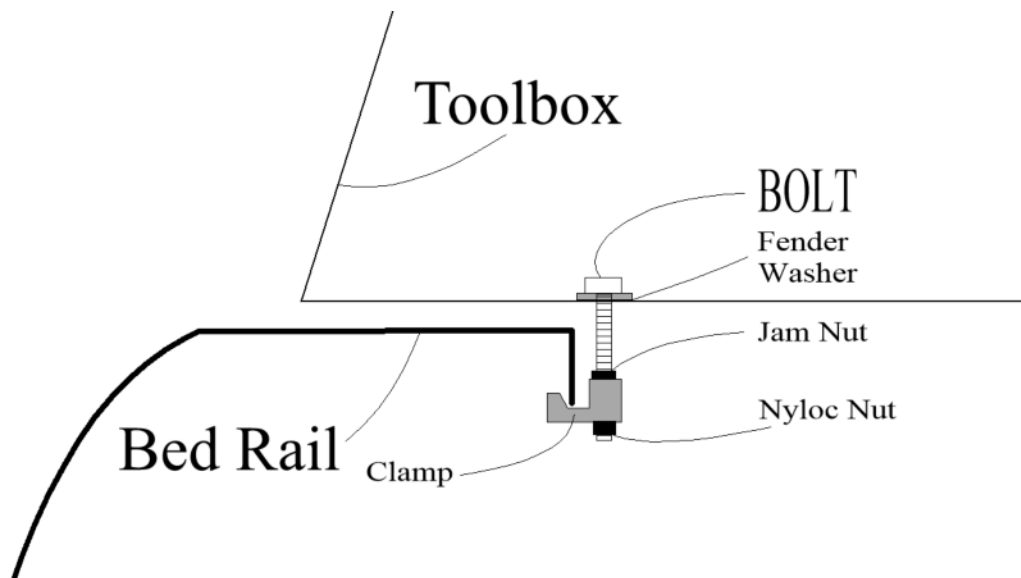


Figure 5

EASY QUAD MOUNT NO DRILL



Through the bed rail installation; FIG 8, 9 PART B

1. Follow the directions on page 5 to line up toolbox to cab.
2. Use your hand to feel underneath the bed rail for the best location of the bolts.
3. Locate the best slots inside the toolbox for the best bolt location. On some applications it may be required to drill a small pilot hole, then feel for the drill bit with your hand to make sure you can get the bottom nut and washer on. If none of the slotted holes line up, you will have to drill additional holes in the toolbox.
4. We recommend drilling one hole and installing one bolt at a time to keep the toolbox aligned with the masking tape.
5. If the truck bed is aluminum coat drilled holes with zinc rich primer or anti-seize.
6. Drill 4ea. 5/16" holes (**See warning page 2**), aluminum beds) and install bolts, washers and Nyloc nuts. Torque to 8-foot pounds. Snug bolts then ½ turn. **DO NOT OVER TIGHTEN** mounting bolts. Bed rail damage could occur.
7. See diagram below.

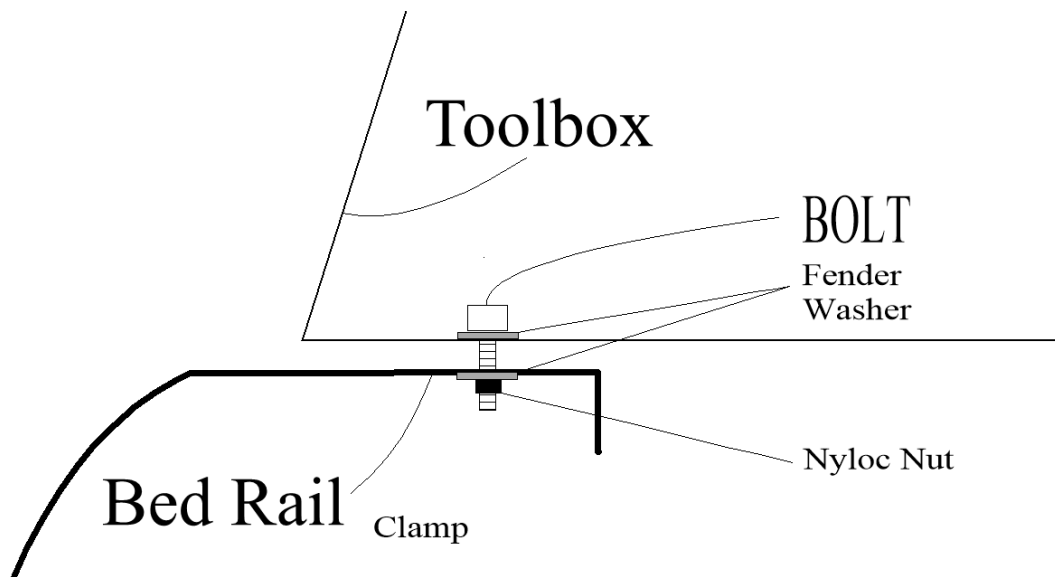


Figure 8 top, 9 below

THROUGH THE BED RAIL MOUNTING



RISER/FEET installation **FIG 15 PART G, H**

Follow directions on page 5 to line up toolbox and follow same instruction for the “Through the Bed Rails” installation. Page 7. Install Risers/FEET onto the toolbox using included hardware before placing toolbox onto the bed rails.

1. The risers come packaged with 3 lag bolts and washers and 4ea. 5/16” X 2 ½” mounting bolts, washers and lock nuts.
2. Attach risers to the bottom of the toolbox using the 3 lag bolts and washers. **FIG 10**
3. Follow installation directions above for the through the bed rails installation using the longer 2 ½” mounting bolts. Torque to 8 Foot Pounds. (**DO NOT OVER TIGHTEN**) mounting bolts. Bed rail damage could occur.



Riser/Foot bolt location.

Fig 10



Riser/Foot bolt hole location.

FIG 11

NOTE: diagram shows hole location, the bolts actually go through the toolbox first as shown in the top photo **FIG 10**.

Riser/Foot location with bolts
Installed but not tightened.



Hand tighten riser/foot bolts to 25-inch pounds.
Snug tight, then 1/4 a turn. (**Do not overtighten**)!

FIG 12



Mounting bolt location with Risers
Installed. You may have to drill holes,

FIG 13, 14

If existing holes don't line up you will have to drill holes. Follow "Through the Bed Rail Installation" **Page 7**

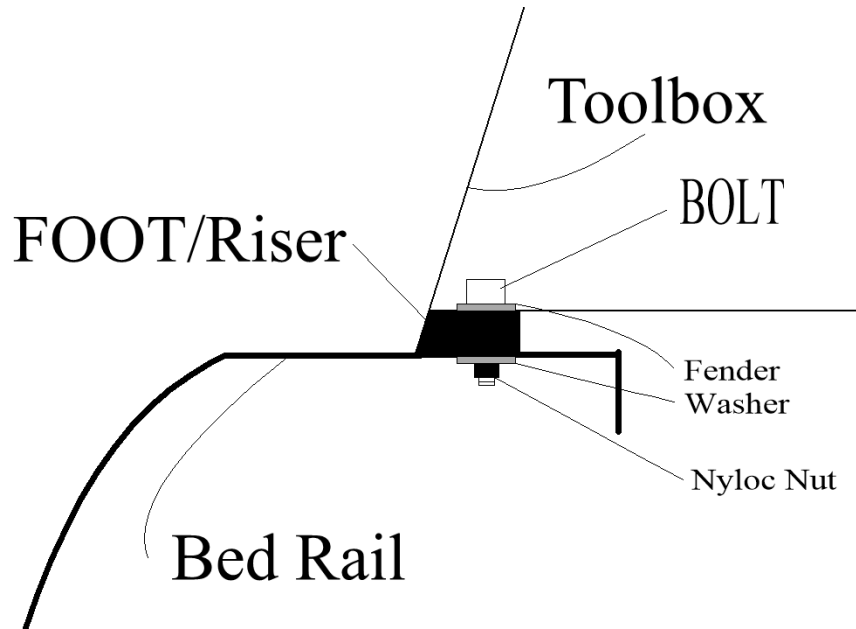


Figure 15

Ratchet Strap Tie Down Brackets Installation, PART J

1. Locate where you would like to mount the brackets. You may install the brackets anywhere on the toolbox you like. Make sure you stay at least 1 ½ inches away from any edges of the toolbox. Check inside the toolbox and make sure the backing plate won't engage any uneven surfaces. The standard location is the bottom outside corners of the toolbox. See **Fig 15a**
2. Once you have the bracket location use the backing plate as a template to locate the holes for drilling. Make sure the holes are lined up exactly. You may use a 7/32-inch drill bit to mark the holes through the backing plate. Once the holes are marked use a 5/16-inch drill bit and drill the 4 holes.
3. Use a round rat tail file to lightly clean any burrs from around the holes.
4. Install the 4 carriage bolts through the tie down bracket and through the toolbox panel.
5. Install the backing plate on the inside of the toolbox onto the 4 bolts.
6. Install the flat washers and the Nyloc nuts and torque to 25-inch pounds. Basically, snug all 4 nuts down tight then tighten an additional 1/4 turn.
7. **SEE FIG 16,17**



FIG 15a

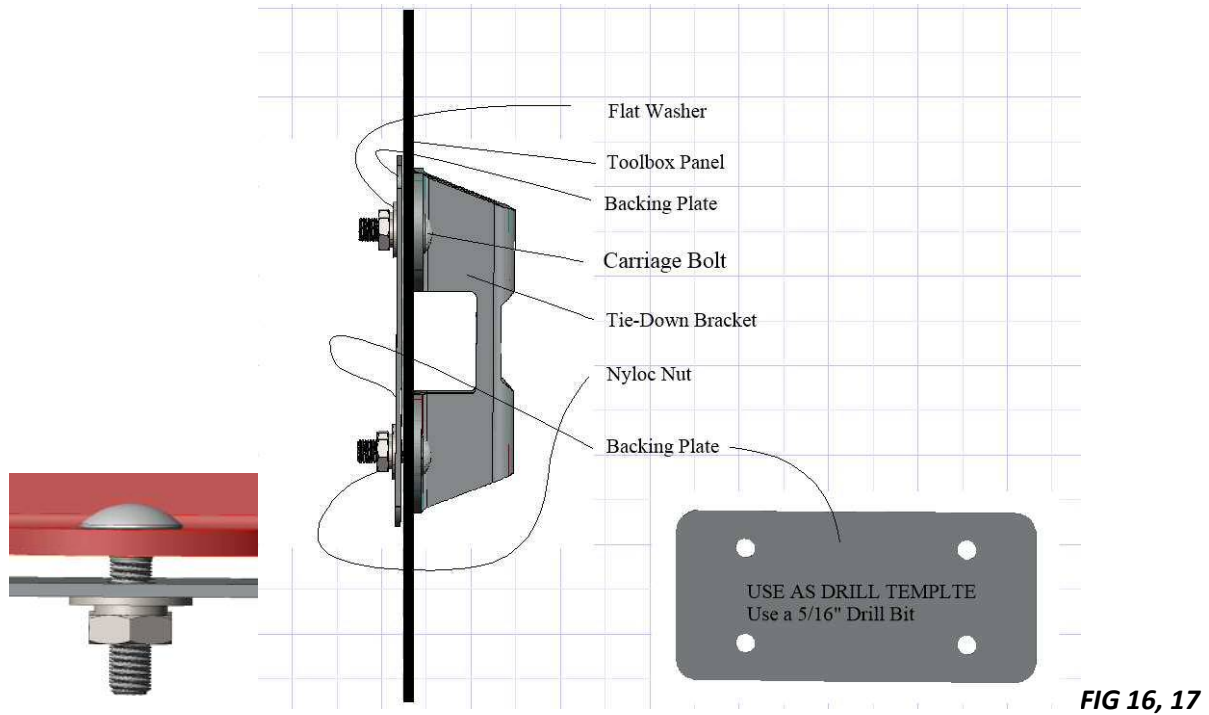


FIG 16, 17

SHELF INSTALLATION; PARTS D, E

1. Install larger shelves on upper shelf brackets. Tip the shelf sideways and install. **FIG 18**
2. Install smaller shelves on the bottom shelf brackets.
3. Install top shelf OPTIONAL locking clevis pins in the left side corner holes. **PART L, FIG 18a**
4. If no upper shelf pins were ordered then you can drill, purchase and install pins yourself.
5. The upper shelves will slide inward out of the way and all 4 shelves are removable.

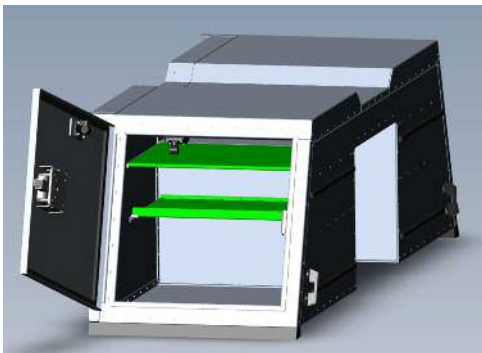


FIG 18



FIG 18a



TOOLBOX OPERATION

SIDE DOOR OPERATION

1. When the side doors are opened, the hatch spring locks into place preventing the doors from moving. When closing the doors pull the hatch spring down or towards you. DO NOT push the hatch springs in, damage to the springs could occur by getting caught in the door hinge. See FIG's 18b and 18c



FIG 18b



FIG 18c

REPLACEMENT RIVET SCREWS; PART K

In the rare event one of the rivets is broken or found missing, there are 4 rivet screws included with your parts. Follow instructions below.

1. Remove old/broken rivet. If the rivet is hard to remove you may have to drill it out. Use a 1/8th inch drill bit and drill out old/broken rivet.
2. Using a 5/64th inch Allen Wrench screw the rivet screw into the rivet hole and tighten. The rivet screw will self-thread into the rivet hole in the toolbox.
3. Install the lock nut on the inside of the toolbox.
4. The included rivet screws are black matching our stock toolbox color. If your toolbox is a different color, simply get yourself a piece of thin cardboard and punch the rivet screw through the cardboard. Spray paint the rivet screw head with the color of your choice. Use a good enamel spray paint suitable for exterior finishes.
5. That's it, you're done!



MAINTENANCE and CARE

1. Check the stability of the toolbox before every trip.
2. Check all mounting bolts for tightness every 60 days.
3. Lubricate door latch, key hole and door hinge with light machine oil every 60 days.
4. Door latch screws, hatch spring screw/nuts, and all mounting bolts/nuts must be periodically tightened and inspected.
5. Door Hatch Spring screws must be inspected for proper adjustment. The main screws as shown below must be coated with BLUE medium strength loc tight. Visually inspect the main screws every 60 days. If you see any screws coming loose, simply loosen screws and apply loc tight then tighten and adjust until the hatch spring moves freely. Friction and lateral torque from opening and closing the doors will cause these screws to loosen if loc tight is not applied. **FIG 19-20**

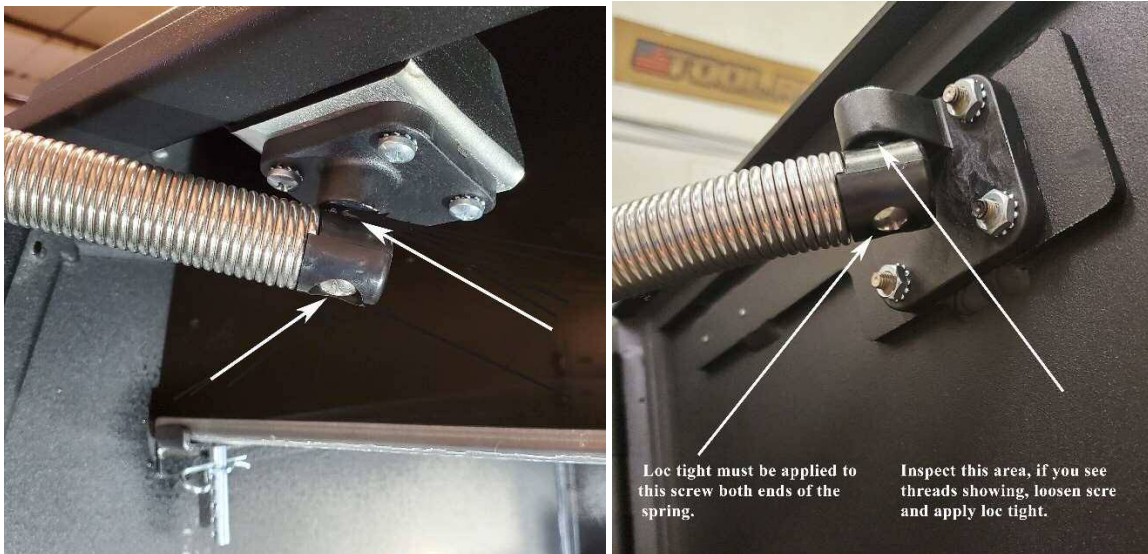


FIG 19-20

6. Door Adjustment. Inspect door operation and ensure they are opening, closing and latching properly. As the door seal wears you may have to adjust the striker plate. Simple process. If the door is loose after latching then you must adjust the striker plate in. If the door won't latch you adjust the striker plate out. Loosen screws and apply blue medium strength loc tight and tighten screws.



FIG 21

7. Door Adjustment, the side doors can be adjusted up, down, in or out. There are 7 # T-25 torx screws that hold the doors on. The door mounting holes are slotted. Simply loosen all door mounting screws, adjust the door and tighten screws. (**DO NOT OVERTIGHTEN**). Snug screws, then $\frac{1}{4}$ additional turn. **FIG 22**

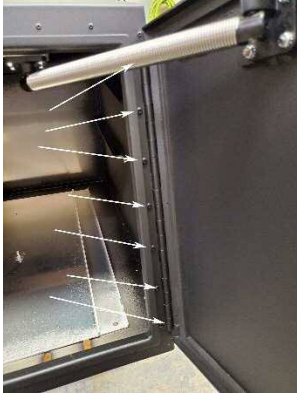


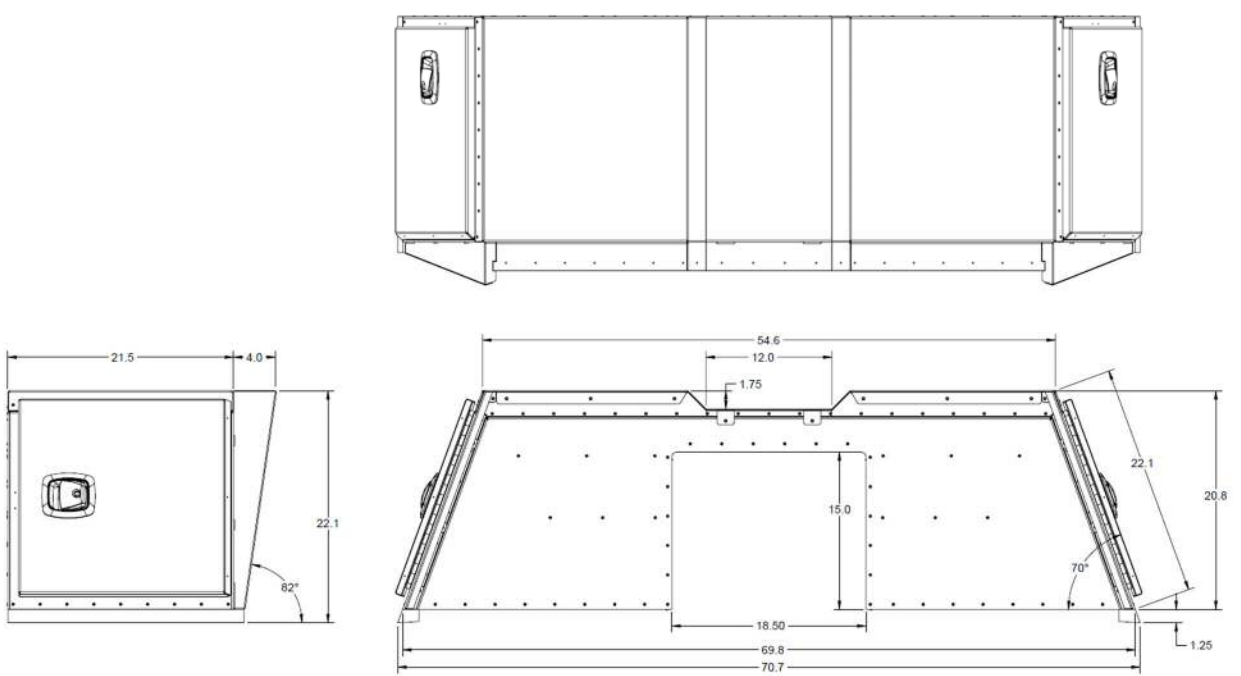
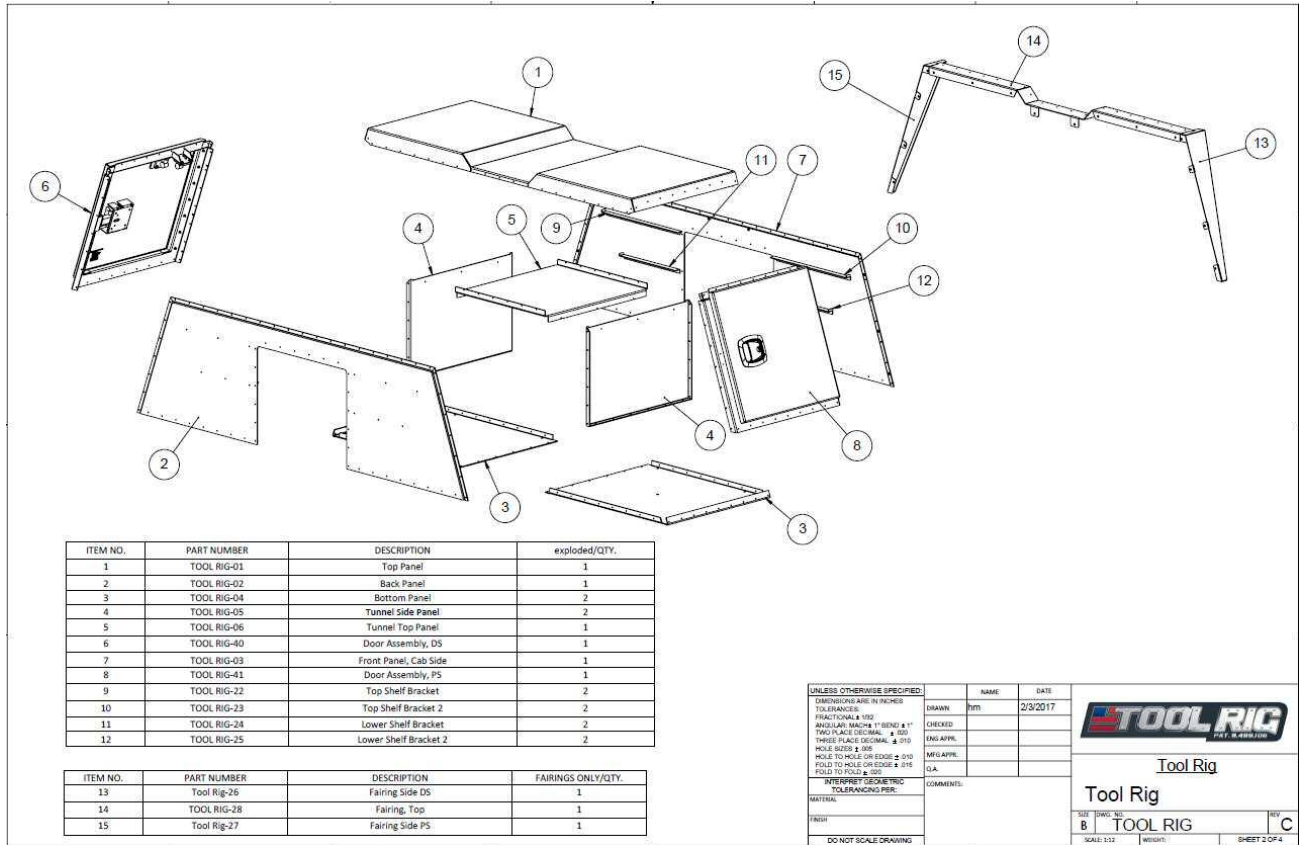
FIG 22

CLEANING



DO NOT USE ANY HARSH CHEMICALS ON THE TOOLBOX FINISH

1. Use hot soapy water only to wash your Tool Rig. Dry with towel. Do not use any chemical-based cleaners, it will damage the powder coated finish. If your powder coated finish is smooth you may apply wax. The standard factory powder coating finish is textured and we do not recommend using wax.



TOOLBOX DIMENSIONS

Tool Rig Return Policy

Product returns will only be accepted if initiated within 10 days of the shipping date. Products may only be returned with a valid Return Merchandise Authorization Number (RMA Number) A 20% restocking fee is applied for all returned merchandise providing the product is received within 21 days of the shipping date. The product must be in the original packaging and be in sellable NEW condition. If the product has been installed or there is damage to the product or packaging additional charges will apply. The purchaser is responsible for the return shipping fees. Please allow 10-14 days for inspection and for the refund to be processed.

Discounted or scratch and dent items are non-returnable and all sales are final.

If the product was damaged during shipment you must notify us within 24hrs of receiving the product. Photos must be provided of the damaged shipment. If the product was damaged during shipment, we will arrange for the product to be shipped back to us.

The return shipping address is:

Tool Rig LLC

6140 S Gun Club Rd. Ste. K6-375

Aurora CO 80016

tom@toolrig.com

Tool Rig Limited Warranty Policy

This product carries a **Three-year** factory limited warranty to the original purchaser only from the date of purchase. Tool Rig warrants the product will be free from defects in materials and workmanship from the date of purchase and continuing for **Three-years**. This warranty is void if the product is transferred to a different owner. If the product is found to be defective in materials or workmanship please email tom@toolrig.com to initiate a possible claim. Tool Rig will attempt to repair the defect with purchaser either through sending parts that the purchaser or a local auto accessory shop may replace.

Continued

What the warranty does not cover:

This warranty does not cover improper installation, overloading, accidents, wear and tear, modification to the product, alterations, labor, shipping costs, unlawful use, paint, powder coating or any finish. Defects resulting from acts of god, misuse, failure to properly install, damage caused by collision, hazardous or dangerous stored items and improper maintenance care. This warranty does not cover any contents of the product or any vehicle installed on.

Tool Rig LLC must be notified in writing of any defect assumed to be a warranted item upon discovery. Warranty coverage under this limited warranty is conditioned upon the original owner to follow warranty policy guidelines.

In no event shall Tool Rig LLC be liable for any consequential damages whether being incidental or indirect including economic loss resulting from use, misuse, nonperformance or the manufacture's negligence.

No other expressed warranty applies.

Send warranty inquiries to:

Tool Rig LLC

Attn: Warranty Claims

6140 S Gun Club Rd. Ste. K6-375

Aurora, CO 80016

tom@toolrig.com

Tool Rig Limitation of Liability Policy

Under no circumstances will Tool Rig LLC or any affiliates be held liable for any special, punitive, consequential, incidental, indirect or medical damages including but not limited to loss of profits, business, savings or revenues. The purchaser assumes and uses this product at their own risk and must follow the installation, maintenance, care and usage guidelines outlined in the owner's manual of the product.



Thank You for your purchase!

For support go to www.toolrig.com

Tool Rig LLC
6140 S Gun Club Rd
Ste. K6-375
Aurora, CO 80016