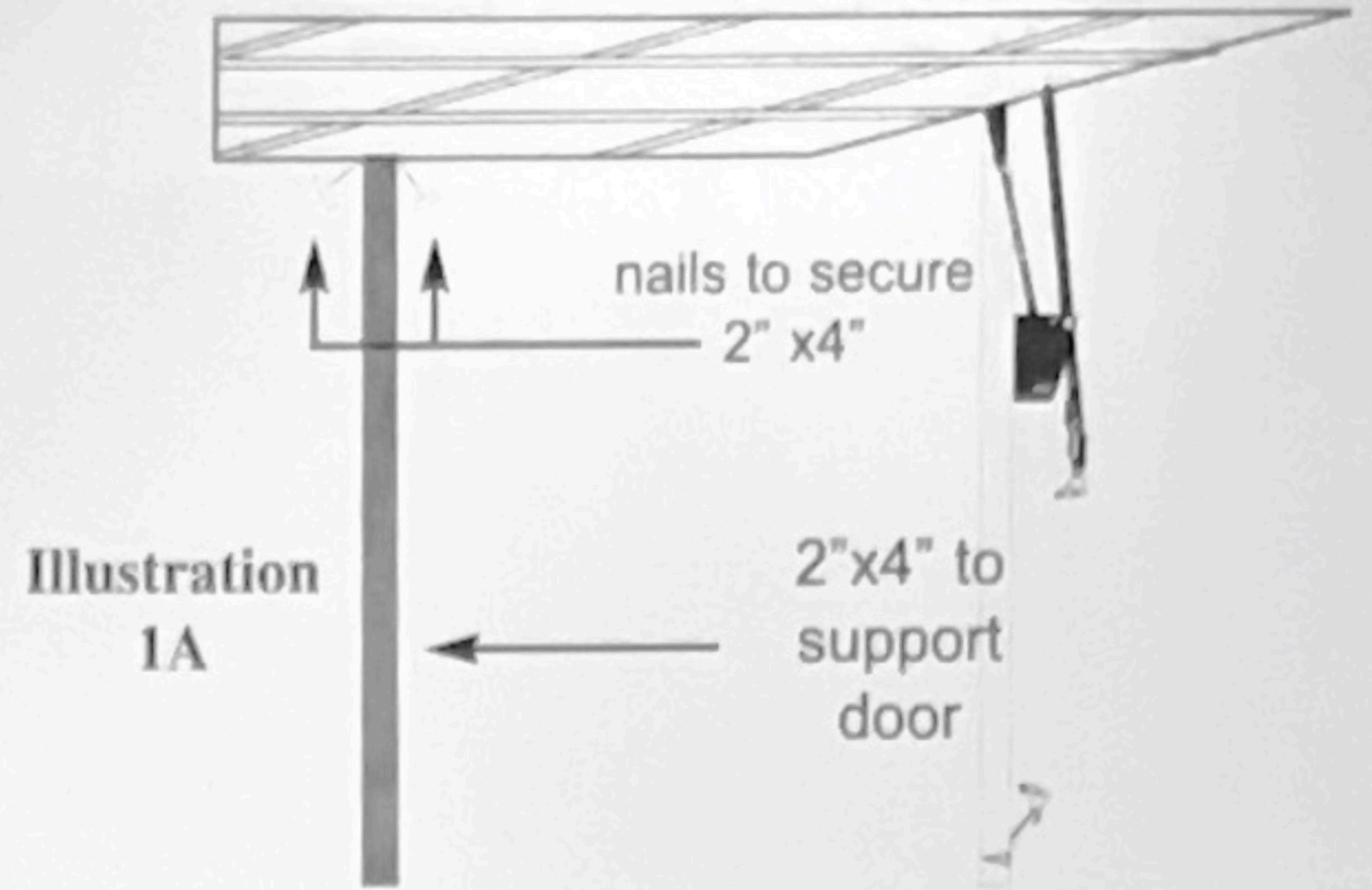


Please read the following instructions carefully before proceeding, and follow them exactly. We urge you to remember that you are working with a door that may weigh up to 350 lbs. and recommend you exercise care and caution when installing your garage door springs.

THE FOLLOWING CAUTIONARY NOTES ARE IMPORTANT:

1. DO NOT LIFT THE DOOR BY YOURSELF. Get help to make this safer and easier.
2. When the door is open, make sure it is supported securely with a 2 x 4 board nailed in place. (See Illustration 1A at right)
3. Attach springs only when door is open and DO NOT CLOSE DOOR UNTIL SPRINGS ARE SECURELY FASTENED
4. If you require additional assistance, call 1-800-404-9347 or Contact a licensed garage door installer located in your local yellow pages under garage doors.

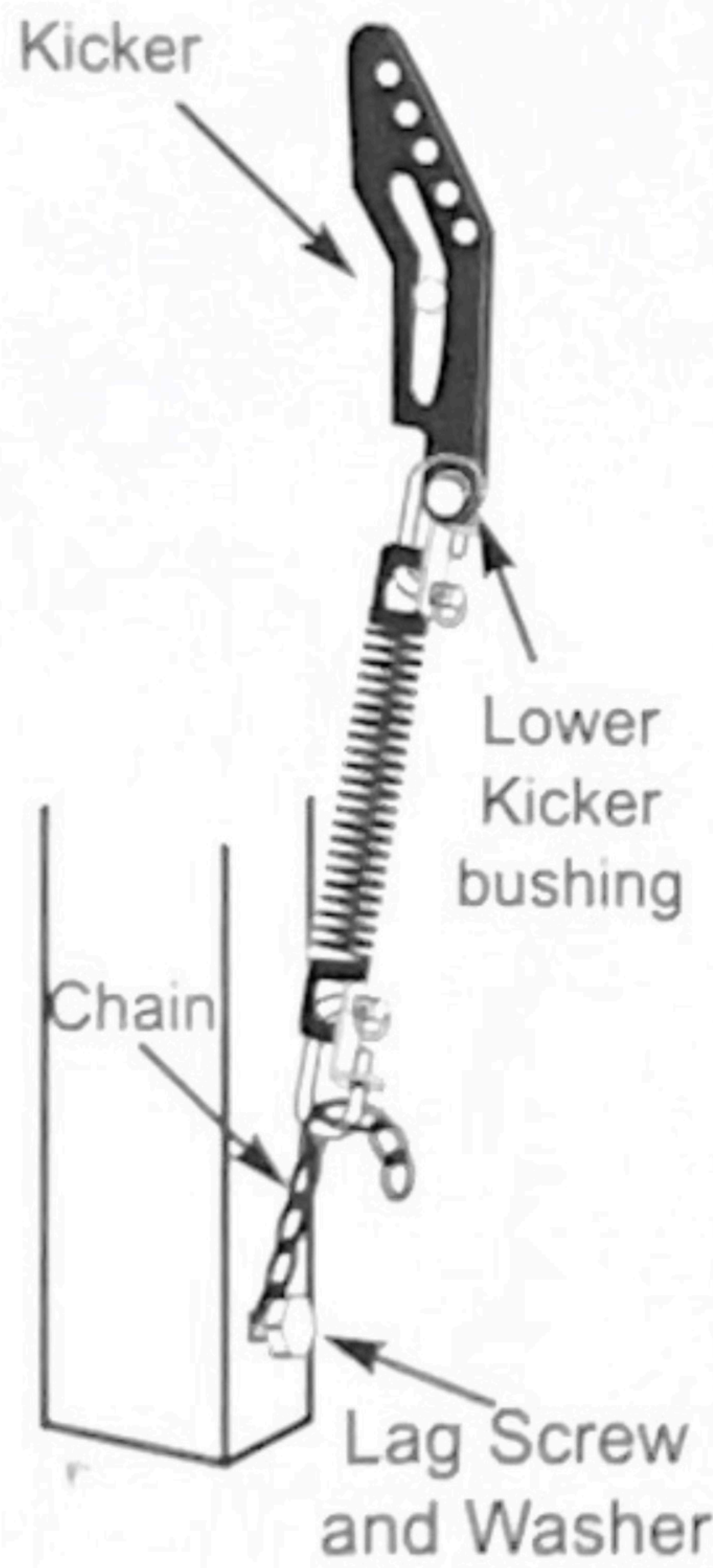


SELECT THE APPROPRIATE SPRING INSTALLATION FOR YOUR HARDWARE SETUP.

“C” hook Installation

SINGLE SPRING INSTALLATION

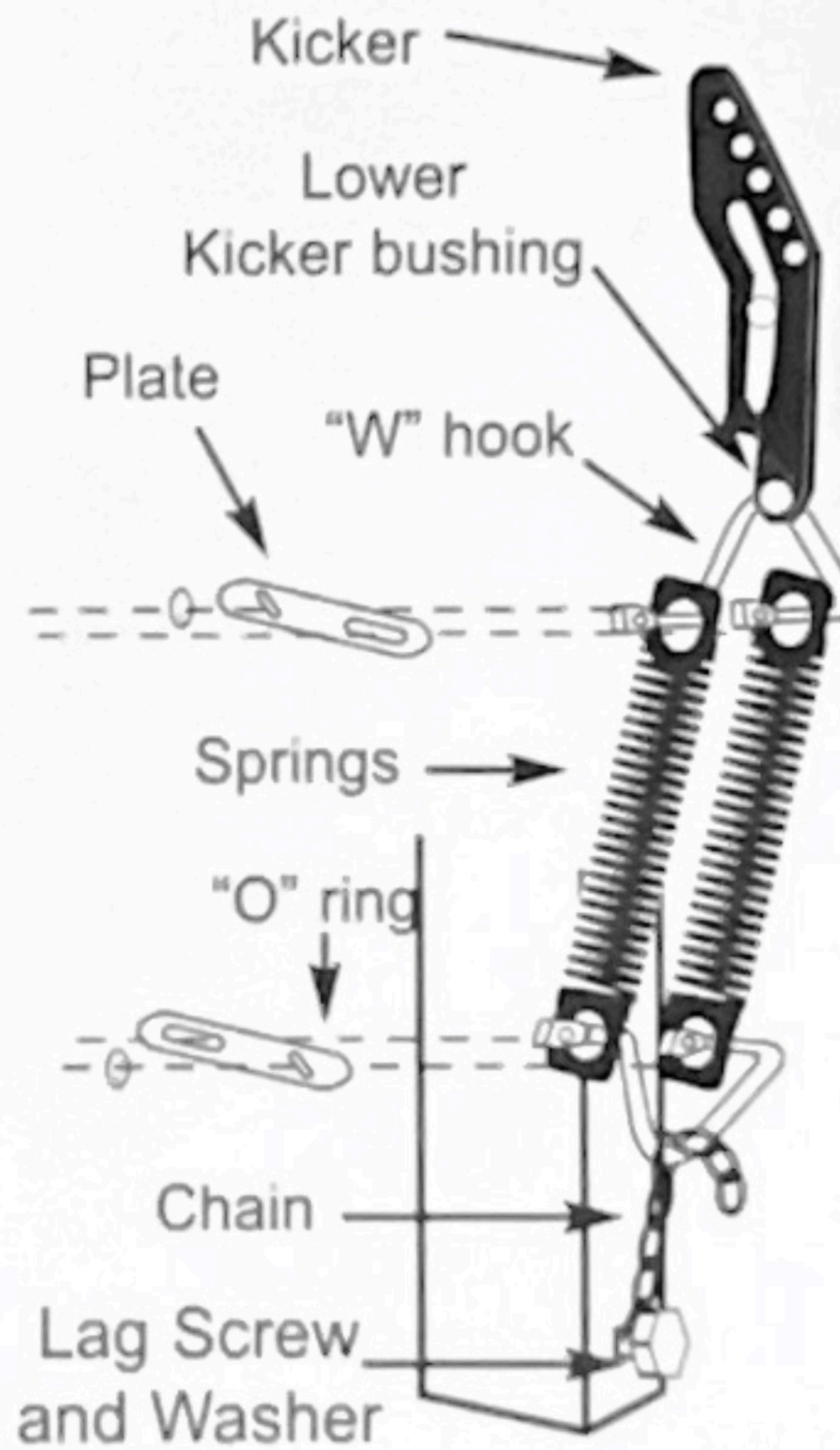
- Install one “C” hook into chain at bottom of door jamb and the other one over the lower bushing in kicker.
- Attach spring to lower “C” hook and install “L” shaped plate over open ends. Secure with “O” ring.
- Stretch spring (2” Max.) and attach to upper “C” hook. Secure with plate and “O” ring.
- Repeat on other side of door.



“W” hook Installation

DOUBLE SPRING INSTALLATION

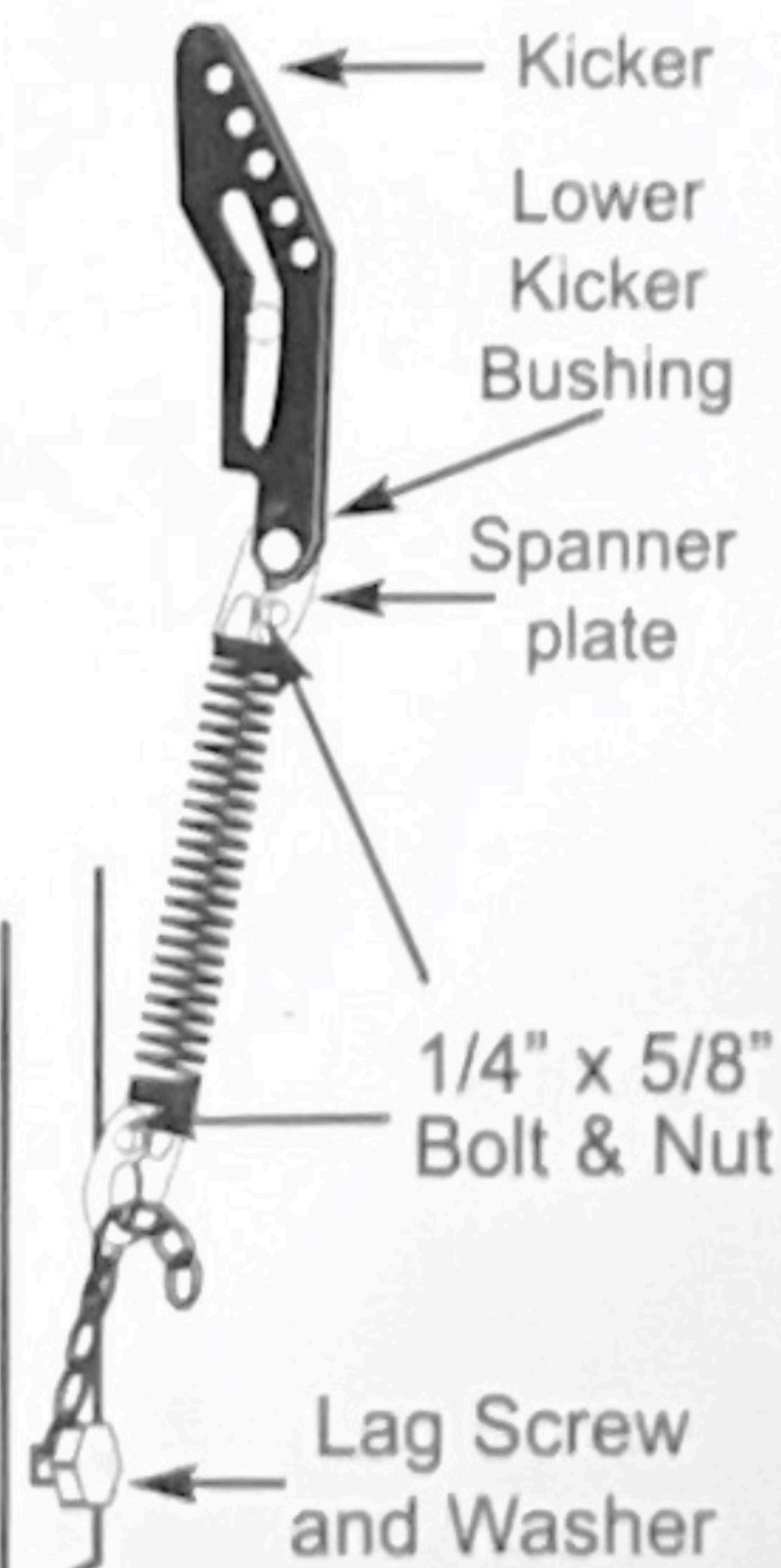
- Install one “W” hook into chain at bottom of door jamb and the other one over the lower bushing in kicker.
- Attach two springs to lower “W” hook & install plate over the ends. Secure with “O” ring.
- Stretch springs (Max. 2”) one at a time and attach to upper “W” hook. Secure with plate and “O” ring.
- Repeat on other side.



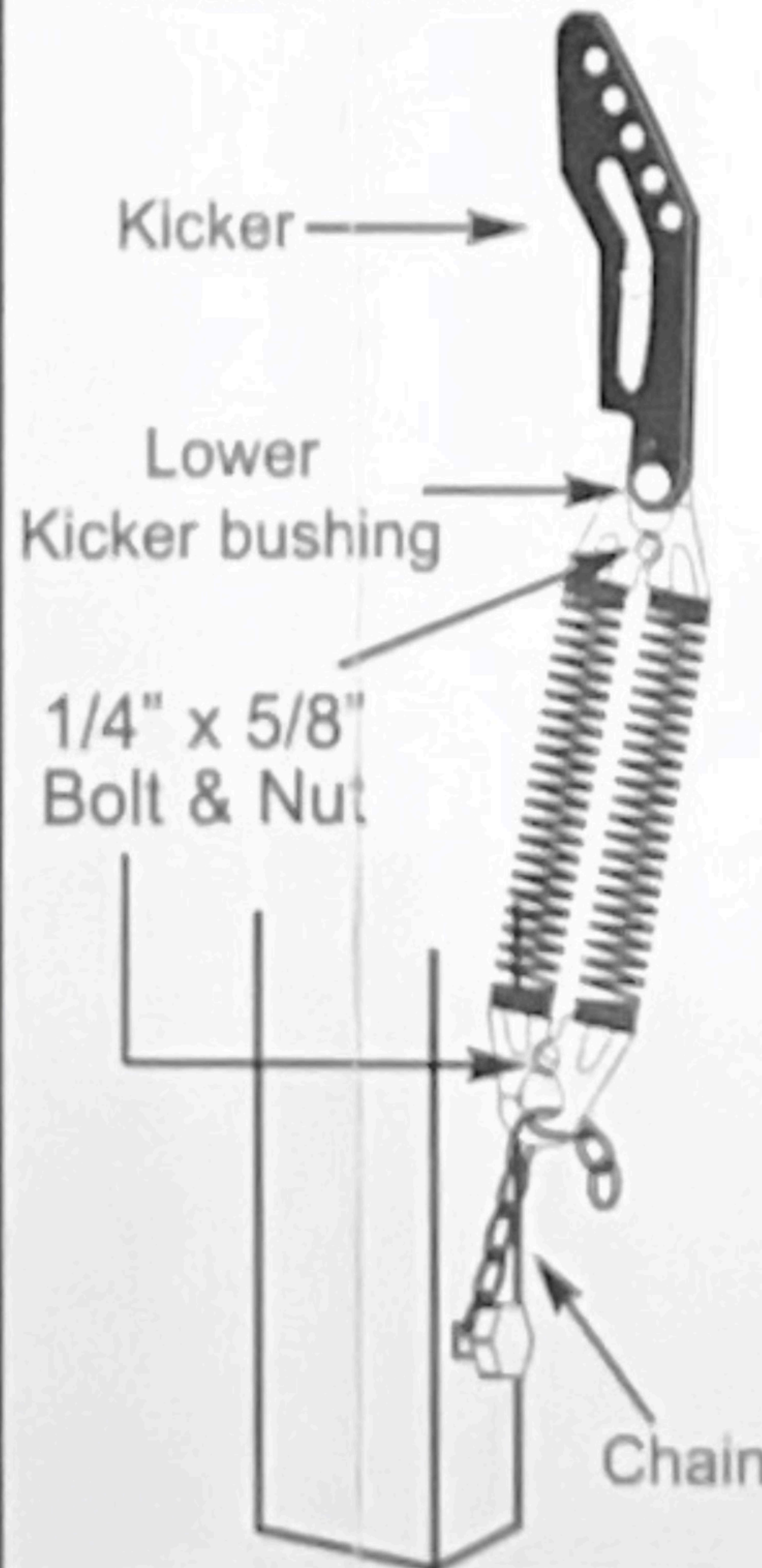
“SL” Installation

SINGLE SPRING INSTALLATION

- Install hook at end of spring into chain at bottom of door jamb. Attach Spanner Plate with 1/4” x 5/8” bolt & nut on hook.
- Stretch spring (Max. 2”) and hook over lower bushing on kicker, as shown. If hooks don't line up turn spring in the direction it turns easiest, until lined up.
- Attach top spanner plate, nut, and bolt
- Repeat on other side of door.



Discard Spanner Plates for this Installation



DOUBLE SPRING INSTALLATION

- Install hooks of two springs into chain at bottom of door jamb. Bolt hooks together with 1/4” x 5/8” bolt & nut.
- Stretch springs (Max. 2”), one at a time and hook over lower bushing on kicker, as shown. If hooks don't line up turn in the direction it turns easiest, until lined up.
- Bolt together with bolt and nut.
- Repeat on other side of door.

If you experience excessive noise while the door is being closed, first secure door in the open position with a 2x4 wood board nailed in place. Remove spring from upper attachment (at kicker), twist spring(s) 180 degrees in the direction they turn most easily. Resecure springs according to instructions, then, only after all parts are secured, remove prop and close door.