

Winnebago County  
Local Emergency Planning Committee (LEPC)  
Hazardous Materials Plan

---

### Statement of Purpose

The purpose of this Comprehensive Emergency Response Plan is to ensure the fulfillment of the all planning requirements under the Federal Emergency Planning and Community Right-to-Know Act (EPCRA), as well as the Illinois Emergency Planning and Community Right-to-Know Act (Illinois EPCRA). This document explains how the Winnebago County LEPC meets this statutory planning obligation for extremely hazardous substances (EHS) stored in Winnebago County by preparing site specific plans for facilities that report to it with Tier II Reports, as required by the United States Environmental Protection Agency (USEPA). Winnebago County LEPC further acts to prepare site specific plans for facilities that store Bulk Fuel at a terminal and Propane, as reported to it with Tier II Reports.

### Situations

Winnebago County has over 288,000 residents in an area that encompasses 519 square miles. The county is divided into 15 fire protection districts plus 7 additional fire protection districts within MABAS 8 (mutual aid box alarm system). The Rockford Fire Department (RFD) Hazardous Materials Team provides assistance to the surrounding fire protection districts in the county.

### Assumptions

Land use in Winnebago County is both urban and agricultural. Hazardous Materials are stored and transported in all portions of Winnebago County. Facilities storing hazardous materials in quantities sufficient to require reporting with Tier II Reports under USEPA guidelines will make these filings each year with the Illinois Emergency Management Agency (IEMA), the LEPC, and their fire departments.

### Organizations and Responsibilities

In accordance with Section 5(e) of the IEMA Act, the Winnebago County LEPC shall serve as an advisory committee for the development of emergency operations plan provisions for hazardous chemical emergencies. It is the responsibility of the Emergency Manager to initially prepare this emergency response plan for the county which he/she serves as Community Emergency Coordinator and lead its annual review.

The LEPC has voted to accept the initial Comprehensive Emergency Plan. Winnebago County's Emergency Manager is responsible for its maintenance, review, and updating. Members of the LEPC and the community may offer amendments to this plan after its annual review.

## Concept of Operations

The Incident Commander is responsible for the overall management of an incident, including determining incident objectives and strategies and establishing the immediate priorities. Response procedures for a hazardous material incident, under the direction and control of fire/rescue personnel as the Incident Commander, are but one of the provisions identified in EPCRA and Illinois EPCRA for emergency response planning requirements.

Under this title, Concept of Operations, the nine elements that must be included in an emergency response plan are provided for Winnebago County in a succession of chapters, each numbered to correspond with their enumeration in EPCRA and Illinois EPCRA.

Presentation of the required elements is set forth in the following Index.

### INDEX

Page			
3	Chapter 1	-	Facilities and Routes
8	Chapter 2	-	Response Procedures
10	Chapter 3	-	Emergency Coordinators
11	Chapter 4	-	Release Notification Procedures
13	Chapter 5	-	Determining the Occurrence of a Release
15	Chapter 6	-	Emergency Response Resources
16	Chapter 7	-	Evacuation Procedures
17	Chapter 8	-	Training Classes
19	Chapter 9	-	Emergency Plan Exercise
20	Appendix 1	-	Facilities Storing EHS
X	Appendix 2	-	Fire Departments Serving Winnebago County
X	Appendix 3	-	List of Schools in Winnebago County
X	Appendix 4	-	Nursing Homes and Assisted Living Facilities – Rockford
X	Appendix 5	-	Nursing Homes and Assisted Living Facilities – Outside Rockford
X	Appendix 6	-	Incident Flow Chart
X	Appendix 7	-	Emergency Release Notification Fact Sheet

## Chapter 1: Facilities and Routes

The Local Emergency Planning Committee (LEPC) is required to identify facilities that use or store Extremely Hazardous Substances (EHS) and other hazardous materials. The United States Environmental Protection Agency (USEPA) maintains a Consolidated List of Chemicals Subject to the Emergency Planning and Community Right-to-Know Act, known as the List of Lists on its website: <http://www.epa.gov/osweroe1/tools.htm#lol>.

The LEPC is also required to identify routes that are likely to be used in the transport of ESH. In addition, the LEPC is also required to identify those facilities that contribute to or are subject to additional risk due to proximity to facilities that store EHS.

### **Facilities that Store EHS and other Hazardous Materials**

The LEPC has identified facilities storing EHS and Hazardous Materials from reviewing Tier II Reports. The data from these facilities have been entered into the CAMEO fm database program suite (CAMEO). The most recent list of facilities storing EHS is included as Parts A, B, and C of Appendix 1 to this emergency response plan.

### **Transportation Routes for EHS and Hazardous Materials**

The LEPC is required to identify routes likely to be used in the transport of EHS and other Hazardous Materials. Winnebago County is a largely rural county with an international airport, several railroad lines extending to Chicago, and three major pipelines running through the county. This section will provide an overview of the types of transportation used in Winnebago County.

The following types of transportation have been identified by the LEPC:

- Roads
- Railroads
- Pipelines
- Air

The City of Rockford is the only municipality within Winnebago County that requires EHS and Hazardous Materials transportation routes to be identified. These are identified on maps located in the resource manual located at the 911 communications center and the Emergency Operations Center (EOC). This manual also includes names and contact numbers for rail, pipelines, and airports.

### Roads

#### **Interstate and Other Major Highways**

Winnebago County is centrally located in northern Illinois, 90 miles northwest of Chicago and 60 miles south of Madison, Wisconsin. Its location thus puts it on routes between the largest city in Illinois and the second largest city in Wisconsin. Roadway transportation is a major method of

transporting EHS and Hazardous Materials. We have identified three different types of roadways that would be used in transport; Interstate, U.S. Highways, and State Routes. As of 2006, Winnebago County does not restrict vehicular traffic aside from the State of Illinois' size and weight restrictions.

Many shipments of Hazardous Materials and EHS are in highway transit throughout the county. Quantities can range from small shipments to full tank cars. It is possible that any EHS could be shipped through the county. Typical accidents can include ruptured fuel tanks, low overhead clearance accidents, collision, and rollovers.

Major accidents often include highway closures and traffic control. This can cause a disruption in traffic flow and a large short-term economic impact for the area. In addition, an accidental release of a large quantity of Hazardous Materials and EHS during an accident could result in the need for protective action for the vicinity.

Emergency response will be under the direction of one of the fire departments serving the county as named in Appendix 2. Emergency response may include activating the area's mutual aid box alarm system (MABAS), and coordinating highway closures with the Winnebago County Sheriff's Department, along with the other various law enforcement agencies in the county: the Winnebago County Highway Department, Illinois Department of Transportation (IDOT), the Toll Way Authority, and other public works agencies.

### **Major Streets, Designated Truck Routes, and Established Shipments**

Many Hazardous Materials and EHS shipments originate, traverse, or terminate in Winnebago County. Industrial areas are usually served by truck traffic routes along major streets. Quantities can range from small shipments to full tank cars. Any Hazardous Materials or EHS could be shipped to a facility. Typical accidents include ruptured fuel tanks, low overhead clearance accidents, collisions, and rollovers.

Major accidents often include street closures and traffic control. This may disrupt local traffic patterns. In addition, an accidental release of Hazardous Materials could result in the need of protective action for the vicinity.

Emergency response may include activating the area's MABAS system. Street closures may involve local police departments and emergency management activities.

### **Other Routes**

These streets such as downtown business districts and residential areas, generally have infrequent hazardous materials and EHS shipments. These shipments are usually limited to small quantities to local businesses. Typical accidents include fuel tank leaks, drum punctures, low speed collisions, and loading and unloading accidents.

Accidents and small releases are usually handled by the local hazardous materials unit (County, City, or Village). Generally, the size and severity of the accidental release do not require extensive street closures or protective actions.

### Railroads

Winnebago County is traversed by four railroads: Union Pacific; Canadian National; Iowa, Chicago, and Eastern; and Illinois Railnet.

It is possible that any hazardous material or EHS could be shipped through the county. Quantities can range from small shipments to 200,000 gallon tank cars. Possible accident types include ruptured fuel tanks, train derailments, collisions, low overhead clearance accidents, and spark-ignited track fires. Major accidents often include highway closures and traffic control measures to be taken. This can cause a large disruption in traffic and cause a large short-term economic impact. In addition, an accidental release of a Hazardous Material could result in the need of protective action for the vicinity.

Emergency response will be under the direction of one of the fire departments having jurisdiction in the county. Emergency response may include activating the area's mutual aid box alarm system (MABAS), and coordinating highway closures with the Illinois State Police and Department of Transportation (DOT).

### Pipelines

There are several transmission pipelines that run through Winnebago County. These include:

- Natural gas pipelines, both supplying and traversing the county, and
- Petroleum products pipelines traversing the county

Pipelines generally do not contain EHS, but they do contain Hazardous Materials and are included here as a facility that could contribute to additional risk, if proximate to facilities storing EHS and Hazardous Substances. The LEPC and Communications Centers maintain a list of Pipeline Emergency contacts and future planning includes mapping their locations in CAMEO.

#### ***9-1-1 should be contacted for all emergencies.***

ONEOK NGL Pipeline: 1-800-666-9041

ONEOK North System: 1-800-844-5658

ONEOK Bakken Pipeline: 1-855-348-7240

Guardian Pipeline: 1-888-417-6275

Mid Continent Market Center: 1-888-675-3302

ONEOK Field Services: 1-800-675-3302

Midwestern Gas Transmission: 1-888-417-6275

ONEOK Permian NGL Operating Co: 1-844-288-7240

### Air

Winnebago County is directly in the path of east-west air traffic traveling to and from Chicago through O'Hare and Midway Airports. In addition, the county has the Chicago-Rockford International Airport along with Cottonwood Airport and other private air strips. In addition,

UPS will accept and transport Internationally Dangerous Goods (IDG) in the following categories: flammable liquids, non-flammable gasses, flammable gasses, flammable solids, corrosives, and anything listed under the miscellaneous category. A detailed list of all accepted classes, commodities, and their associated quantities for each substance is located on UPS's website at: <http://www.ups.com/content/us/en/resources/ship/idg/download/accepted.html>.

Airplanes may carry "Dangerous Goods" as defined by the Federal Aviation Administration. The size, quantity, and packaging of dangerous goods are strictly controlled. The physical hazard from a plane crash and the potential fuel fire would virtually outweigh any hazard from the cargo on board.

### **Additional Facilities**

The LEPC is required to identify other facilities that contribute to additional risk, as well as identify other facilities that are subjected to additional risk due to the proximity with facilities that store hazardous materials and EHS. Additional facilities are broken down into categories that have the potential to contribute to additional risk and those that are potentially subject to additional risk.

#### Facilities that Contribute to Additional Risk

The LEPC has determined any facility that stores Hazardous Materials may contribute to additional risk. See Appendix 1 for a current list of facilities based on quantities sufficient to require filing Tier II Reports. The Tier II Reports are maintained at the Winnebago County ESDA office and are available upon request.

#### Facilities that are Subject to Additional Risk

The LEPC has determined that the following facilities may be subjected to additional risk due to their proximity to an EHS and/or Hazardous Material facility or transportation route.

#### ***Hospitals:***

OSF St. Anthony Medical Center 566 E State St Rockford, IL 61108 815-226-2000	Rockford Health System 2400 N Rockton Ave Rockford, IL 61103 815-971-5000	Swedish American Hospital 1401 E State St Rockford, IL 61104 815-968-4400
--	--	--

#### ***Universities and Community Colleges:***

Judson College 973 Featherstone Road #A Rockford, IL 61107 815-399-3500	Northern Illinois University 8500 East State St Rockford, IL 61108 815-332-7339
--	--

Rock Valley Junior College  
 3301 North Mulford  
 Rockford, IL 61114  
 815-921-7821

Rockford Career College  
 1130 S. Alpine #100  
 Rockford, IL 61108  
 815-965-8616

Rockford University  
 5050 East State St  
 Rockford, IL 61108  
 815-226-4000

Saint Anthony College of Nursing  
 5658 East State St  
 Rockford, IL 61108  
 815-395-5091

Rasmussen College  
 5000 E State St  
 Rockford, IL 61108  
 877-533-5825

U of I College of Medicine  
 1601 Parkview Ave  
 Rockford, IL 61101  
 815-395-0600

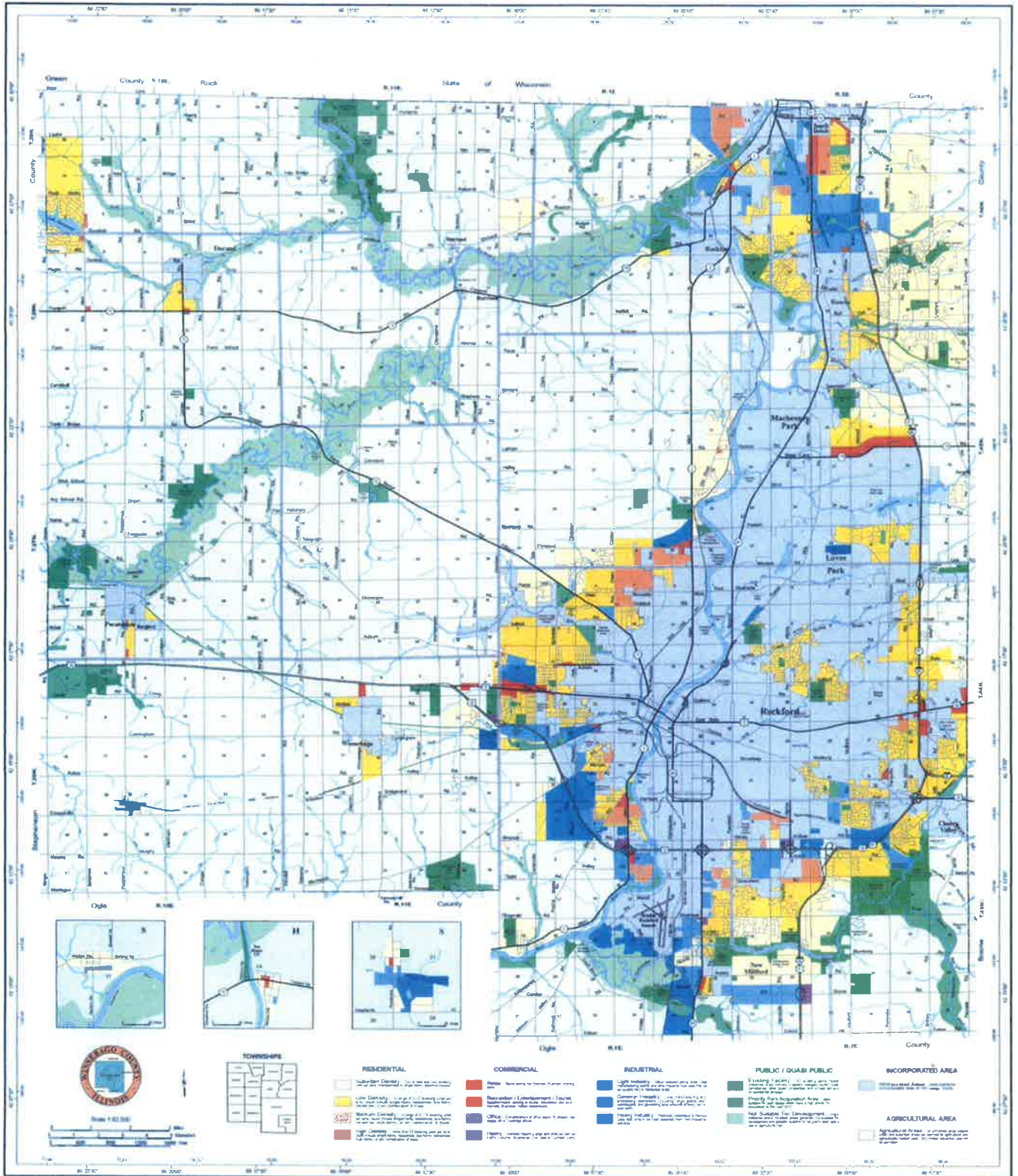
Upper Iowa University  
 1161 Tebala Blvd  
 Rockford, IL 61108  
 815-332-1414

***K-12 Schools (Private and Public):***

A current list of public and private schools including daycares known to the LEPC is provided in Appendix 3. This information is also listed in resource manuals at the 911 Center and EOC Communication Center. <http://schools.chicagotribune.com/county/winnebago>

***Nursing Homes and Assisted Living Facilities:***

A current list of Nursing Homes and Assisted Living Facilities known to the LEPC is provided in Appendices 4 and 5.



**RESIDENTIAL**

- Suburban Density
- Low Density
- Medium Density
- High Density

**COMMERCIAL**

- Retail
- Neighborhood / Entertainment / Local
- Office
- Heavy Commercial

**INDUSTRIAL**

- Light Industry
- Heavy Industry

**PUBLIC / QUASI PUBLIC**

- Existing Facility
- New Facility

**INCORPORATED AREA**

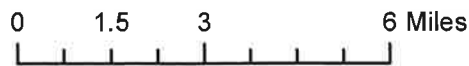
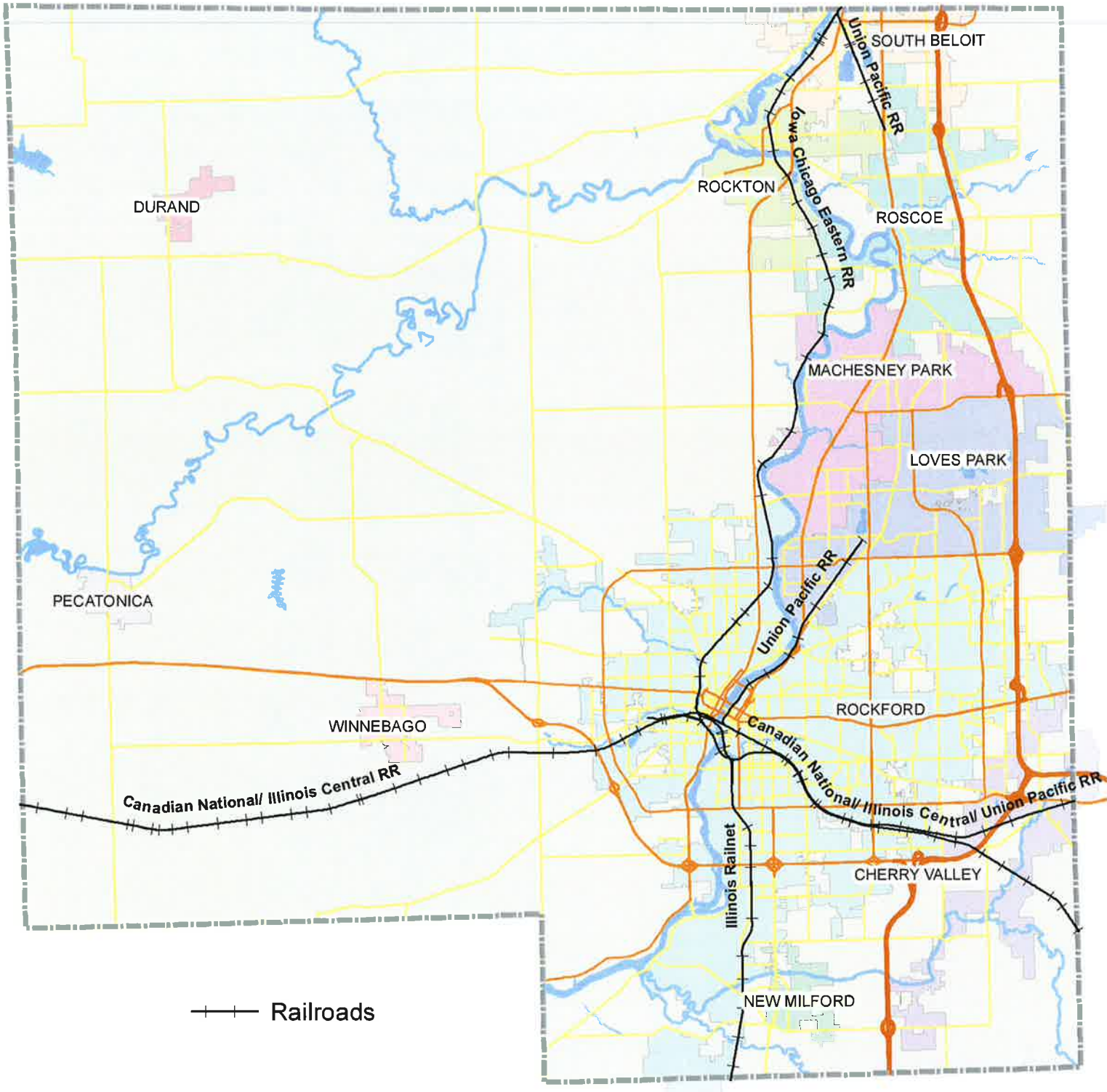
- 2010 Incorporated Areas

**AGRICULTURAL AREA**

- Agricultural Area



# Winnebago County



## Chapter 2: Response Procedures

Appendix 6 depicts hazardous materials response procedures by an Incident Flow Chart for both the City of Rockford and Winnebago County.

The LEPC will continue to obtain facility-specific information from annual Tier II submittals and update our files and this plan regularly. In addition, LEPC is required to include plans of how a facility summons emergency responders and emergency medical personnel. All facilities contact the 9-1-1 Communications Center in any Emergency.

Use of the 9-1-1 System for notification initiates response procedures. This notification is separate from Facility Notification Procedures, but will occur in the same timeframe if the facility or transporter determines the occurrence of its own release. If determination is by a neighboring facility or citizen's report, 9-1-1 notification may occur before Facility Notification Procedures Commence.

Following 9-1-1 notification, fire/rescue, law enforcement, and medical personnel will be dispatched. Fire/rescue will provide the Incident Command for a hazardous materials incident. The initial fire/rescue units will make a scene size-up and determine whether additional resources are needed.

- Level I: Release of hazardous materials that can be controlled by a minimum of personnel and no immediate evacuation is necessary.
- Level II: Release of hazardous materials that, because of the potential hazard, poses a threat to life and property.

A hazardous materials incident may escalate or de-escalate as conditions change. Some Level II incidents will require additional assistance from the Rockford Fire Hazardous Materials Team and additional ambulances. Notification to Rockford's emergency medical facilities (Rockford Memorial, Swedish American, and OSF St Anthony's) to activate their local emergency plans may also be necessary. These facilities follow the Joint Commission Accreditation Hospital Organizations. In the case of a City or County disaster declaration, each hospital would activate their individual local emergency plans. All of these can be contacted by the 9-1-1 dispatch center.

The Incident Commander will establish the command post and a perimeter for the incident. If the perimeter necessitates evacuation, law enforcement and/or surplus fire/rescue personnel will be assigned to this task. The Incident Commander will designate a Public Information Officer (PIO) for media and other briefings and to disseminate public information for necessary protective actions.

The Incident Commander may need further assistance from utility companies, public works, private contractors, county agencies, state agencies, or federal agencies. All of these can be contacted by the 9-1-1 dispatch center. There are signed agreements on file with the Board of Directors for the Illinois Mutual Aid Box Alarm System (MABAS) Division 8. MABAS

provides coordination for mutual aid for Illinois Fire Departments. This include hazardous material incident response coordination.

---

## Chapter 3: Emergency Coordinators

### **Facility Emergency Coordinators**

Every Tier II facility is required by EPCRA to designate at least two emergency contacts. In addition, the LEPC may ask each facility to designate a Facility Emergency Coordinator. This person would be responsible for coordinating planning activities between the facility and emergency responders and planners. Emergency contact information (including phone numbers) for every emergency contact is contained on the Tier II reports.

### **Community Emergency Coordinator**

The LEPC is required to appoint a Community Emergency Coordinator. Winnebago County has appointed the Winnebago County Emergency Services and Disaster Agency (ESDA) coordinator or his/her designee whose office has representatives on the LEPC. The Community Emergency Coordinator is the Winnebago County ESDA Coordinator. The emergency contact method for the Community Emergency Coordinator are by phone:

- Emergency Contact
  - 9-1-1
- Business Hours
  - 815-319-6015
  - 815-319-6007

## Chapter 4: Notification Procedures

### Facility Notification Procedures

The notification requirements are summarized as follows; In the event of an accidental release the owner/operator of a facility or the transporter is required to properly notify federal, state, and local authorities. Notification is required when the chemical release exceeds the reportable quantity of an EHS or a Comprehensive Environmental Response, Compensation, and Liability Act (CERCLA) hazardous substance. Additional follow-up notification shall be made as conditions and information change.

Failure to follow these notification requirements may cause the LEPC to refer the matter to the Illinois Environmental Protection Agency and the Federal Environmental Protection Agency.

The Illinois Emergency Management Agency (IEMA) provides a listing of these requirements on its Emergency Release Notification Fact Sheet, which appears in Appendix 7.

#### When to Notify

Immediate notification is necessary if a release occurs that results in:

- A member of the general public is hospitalized or killed
- An authorized official of an emergency agency recommends an evacuation for the general public
- Fire, breakage, release, or suspected contamination of ground or air occurs involving a chemical or etiological agent
- Any release of chemical product that produces a sheen on water

#### When to Notify (In Order of Notification)

1. 911
2. Winnebago County ESDA  
815-319-6015
3. Illinois Emergency Management Agency (IEMA)  
1-800-782-7860
4. National Response Agency (NRC)  
1-800-424-8802

Under Section 103 of the Comprehensive Environmental Release Compensation and Liability Act (CERCLA) of 1980, Transporters involved or the “person in charge” in an accidental release over the reportable quantities must call the National Response Agency (NRC) and 9-1-1 in the area where the accident has occurred.

### What to Notify

Initial notification should include the following:

- Specific location of release
- Name and telephone number of the person to contact at the site
- The chemical name of substance that is released and whether or not it is hazardous
- Quantity of substance released
- Time and duration of release
- Medium or media (air, land, and water) where release occurred
- Proper precautions that need to be put in place in result of the release, including evacuations
- Health risks associated with the release of this chemical. Advice regarding the treatment of people who may get exposed

A written follow-up notification should be done after the initial notification. The owner and/or operator of the facility should send the follow-up report to the SERC and the Winnebago County Emergency Coordinator. The follow-up report should include the following:

- Actions taken to respond to and contain the release
- Any known or anticipated health risks associated with the release
- What is appropriate advice regarding medical attention for exposed individuals?
- Any changed or updated information from the initial notification

Any follow-up notices shall be made as conditions and information change.

### **Community Notification Procedures**

The Incident Commander is responsible for communicating notification of a release of EHS or other hazardous materials and will designate a Public Information Officer (PIO) for this purpose. The circumstances requiring public notification will depend on incident-specific factors and may vary depending on public safety issues. If a release of EHS or other hazardous materials forces the closure of any establishment that serves food to the public (i.e., restaurants, grocery stores, schools, churches, etc.), the Winnebago County Department Administrator must be notified to facilitate a required inspection before such serving of prepared food can commence again.

## Chapter 5: Determining the Occurrence of a Release

A release may occur from an overt circumstance, such as an explosion or transportation accident. A release may also happen in a situation where its occurrence is not immediately recognized, such as a containment failure or during commission of a crime.

A release at a fixed facility or during transportation may be determined by various means such as:

- Electronic Equipment
- Visual Sighting
- Human Senses
- Neighboring Facilities
- Citizen's Report

A release may not affect the area beyond the property boundaries of the site where it occurs or it could result in a plume with an affected area downwind from the site. The LEPC has used ALOHA modeling from the CAMEO suite to determine when there would be plumes for every facility where a site specific plan has been written. When a plume is produced, the distance that is most likely to be affected by a release is identified with multiple maps to consider the variability of wind direction.

When an EHS will not produce a plume that can be modeled, a Chemical Safety Information sheet has been completed as a resource for determining the occurrence of a release. Site specific plans recommend an isolation area for every hazardous material at the facility based on the Emergency Response Guidebook.

One of the LEPC's duties is determining the likelihood of a release and estimating the consequences of the release. This is done by performing a hazard analysis. The following procedures describe the methods and techniques used to perform the hazard analysis:

- Review Tier II Reports and Identify Hazardous Materials and EHS Facilities
- Request additional information from Hazardous Materials and EHS Facilities
- Enter data and map data in CAMEO
- Perform screenings and scenarios for each facility
- Prepare and review hazard analysis for each facility

### **Review Tier II Reports and Identify Hazardous Material and EHS Facilities**

The Illinois Emergency Management Agency (IEMA) and the LEPC receive Tier II reports from regulated facilities. IEMA will perform Tier II data entry for the LEPC and provide the database of information to the LEPC. The LEPC will review reports generated from Tier II data and will identify Hazardous Materials and EHS Facilities.

### **Request Additional Information from Hazardous Materials and EHS Facilities**

The LEPC may send a letter asking the Hazardous Materials and EHS Facilities for additional information. This additional information may be required on a case-by-case basis.

## **Enter Data and Map CAMEO**

In 2009, the US Environmental Protection Agency (USEPA) released a new version of the CAMEO emergency planning software. CAMEO stands for “Computer-Aided Management of Emergency Operations and is freely available to LEPC’s and emergency responders nationwide. CAMEO is a database program optimized for chemical emergency planning. It works for other free programs from the USEPA: MARPLOT, ALOHA, and LANDVIEW. The four programs are commonly referred to as the CAMEO suite.

Once the inventory information is entered into CAMEO and MARPLOT, a Screening and Scenario can be conducted to determine the number of people and the area impacted by major chemical releases. It is a goal and objective of the Winnebago County LEPC to enter and map data into the CAMEO suite.



## Chapter 6: Emergency Response Resources

### **Facility Emergency Response Resources**

All facilities storing EHS should have provided Winnebago County LEPC with their facility release detection and emergency resources and procedures. This information is documented in an appendix to the facility's respective site specific plan and subject to review and update.

A goal and objective of the Winnebago County LEPC is to obtain a list of each Hazardous Materials and EHS facility's emergency response resources.

### **Community Emergency Response Resources**

Winnebago County LEPC maintains listings of community emergency response resources for emergency response agencies and organizations within Winnebago County. The site specific plan for facilities storing Hazardous Materials and EHS include an itemized listing of emergency response resources for the fire department with jurisdiction (see appendix 1), Rockford Fire Hazardous Materials Team, and MABAS Division 8. The site specific plans also identify a list of private contractors who can provide the resources necessary for scene stabilization and hazardous materials clean-up. The means for the Incident Commander to access these resources providers are listed in the site specific plans or they can be contacted by 9-1-1 dispatch.

Healthcare procedures at Rockford Memorial, OSF St. Anthony's, and Swedish American for hazardous materials accidents are maintained by the LEPC along with the complete emergency operations plan for each hospital and their full listing of emergency response resources.

## Chapter 7: Evacuation Procedures

Evacuation is the action to remove a vulnerable population from an area which is very likely to pose a significant human health or safety risk. Certain hazardous materials release conditions always call for evacuation: 1) there is a high potential for explosion and 2) the release is large with long-term duration anticipated. For other situations, evacuation should be considered when there is adequate time to warn and evacuate the population and the community has the resources and capability to effectively carry out the evacuation.

The City of Rockford and other municipalities in the county have evacuation procedures in their emergency operations plans. These plans identify two types of evacuations that may be utilized: “General Evacuation” and “Limited Evacuation”.

General Evacuation- would involve the relocation of large portions of the public from dangerous or potentially dangerous areas to one that provides safety from the impending situation.

Limited Evacuation- would involve the relocation of one or a few families from the impending situation.

The Incident commander will determine the level of a hazardous materials release and the perimeter for the incident. These determinations will establish whether a General Evacuation, Limited Evacuation, or no evacuation at all is called for.

If evacuation is recommended, law enforcement officers and/or surplus fire/rescue personnel will support the Incident Commander to provide the necessary means to assist with moving mobility-impaired persons and disseminate information to all within the area to be evacuated. However, the primary means by which evacuation information will be shared is through the PIO to the local media. Law enforcement will provide traffic control to assist in the evacuation. Upon request from the Incident Commander, public works will be responsible for barricades and directional signs identifying alternative transportation routes when primary routes (highways) are not useable.

At times when a limited evacuation might be called for, a simpler solution will be to shelter-in-place. Sheltering in place involves keeping or moving the potentially affected population indoors and minimizing the infiltration of the hazardous chemical into the structure by shutting off ventilation, closing doors and windows, sealing seams and thresholds, etc.

Sheltering in place may be the preferred protective action when: 1) the release is occurring very fast; 2) a migrating toxic vapor cloud could quickly overrun an exposed population; 3) the hazardous chemical released has a very low health hazard; 4) evacuation would be very difficult. It should be considered for individuals at schools, hospitals, and other special facilities. The initial decision for sheltering-in-place should be based on: 1) if there is not sufficient time to notify and evacuate the vulnerable population and 2) preliminary information confirms sheltering-in-place will provide adequate protection.

## Chapter 8: Training Classes

A variety of annual training for emergency responders and medical personnel is available at federal, state, and county levels. Training classes and conferences training opportunities can be found using these internet resources which are to be checked at least once a year.

### **Federal Emergency Management Agency (FEMA)**

FEMA's Emergency Management Institute (EMI) and the National Fire Academy (NFA), collocated in Emmitsburg, Maryland, offer many courses as listed below:

- EMI Independent Study Program: <http://training.fema.gov/is>
- EMI Resident (On-Campus) Courses: <http://training.fema.gov/EMICourses>
- NFA Training Resources: <http://www.usfa.fema.gov/training/nfa>
  - NFA On-Campus Classes:  
<http://www.usfa.fema.gov/dhtml/fire-service/nfa-on.cfm>
  - NFA Distance Education Classes:  
<http://www.usfa.fema.gov/dhtml/fire-service/nfa-off.cfm>

### **Occupational Safety and Health Administration (OSHA)**

OSHA is the federal agency responsible for worker safety. Information on OSHA training courses, materials, and resources can be found on the internet at:  
<http://www.osha.gov/dte/index.html>

### **American Red Cross (ARC)**

ARC is one of the nation's largest disaster service agencies. Winnebago County is served by Rock River Area Chapter, which is located at 727 N Church St, Rockford, IL 61103 (Phone: 815-963-8471). Training information from this American Red Cross chapter can be found on the internet at: <http://www.redcross.org/il/rockford>

### **Illinois Emergency Management Agency (IEMA)**

IEMA is the best source for training opportunities available to emergency responders and medical personnel in Illinois. Information on IEMA training and the free annual IEMA Conference can be found on the internet at: <http://www.illinois.gov/iema/training>

### **Illinois Fire Service Institute (IFSI)**

IFSI annually offers more than 300 classes in more than ten program areas. Information on IFSI training can be found on the internet at: <http://fsi.illinois.edu/content/courses>

### **Local**

The LEPC will attempt to facilitate training for First Responders and Emergency Personnel. The Winnebago County LEPC offers a variety of emergency response and hazardous materials

training through its annual Midwest Emergency Preparedness and Response Conference. This conference is a form of public outreach to the community along with other literature and information from the LEPC's public education committee and website ([www.winn-lepc.com](http://www.winn-lepc.com)). In addition, the Winnebago County LEPC holds an annual luncheon open to the public as a means to provide update of the LEPC Plan.

---

## Chapter 9: Emergency Plan Exercise

The purpose of this section is to describe how and when the LEPC will exercise the emergency plan. The Winnebago County LEPC is responsible for exercising this plan on an annual basis. The LEPC meets approximately 11 times each fiscal year. The LEPC Chair sets the agenda for each of those meetings with input from others on the committee. The LEPC Chair may choose any meeting during the fiscal year to conduct an exercise of this plan.

An exercise pursued within an LEPC meeting will be conducted as a discussion-based table top exercise. It will be facilitated by the Chair and require participation by all members in attendance. The scenario for such exercise will be based on the facts of a recent real-world hazardous materials incident within the planning district or the storyline of a recent table top, functional or full scale exercise conducted by a facility or response group within the planning district.

The purpose of the annual exercise is to check the adequacy of this plan. If a facility or response group within the planning district conducts a table top, functional or full scale exercise of a hazardous materials incident that is attended by at least 4 LEPC members (or 3 members plus the LEPC's independent contractor), they may check the adequacy of this plan during that exercise. If the group reports its findings at the next LEPC meeting, the committee may choose to use this activity for the annual exercising of the plan.

Exercising the plan shall be part of the Midwest Emergency Preparedness and Response Conference or at site-specific exercises with local companies or organizations. The exercises may include but not be limited to table top drills/exercises, functional or full-scale drills/exercises, and may vary from year to year.

APPENDIX 1

FACILITIES STORING EHS, TELECOMMUNICATIONS, AND PROPANE

<b>A. EHS- General</b>	<b>Mailing Address</b>	
(10)ADVANCED HEAT TREATING INC	980 INDUSTRIAL CT	LOVES PARK
(9)APPLIED PRODUCTS INC	12000 PRODUCT DR	MACHESNEY PARK
(16)AAMARAK UNIFORM	215 18 <sup>TH</sup> AVE	ROCKFORD
(16)ARNTZEN CORPERATION	1025 SCHOOL ST	ROCKFORD
(19)BEHR BELOIT	201 WHEELER AVE	SOUTH BELOIT
(16)BEHR IRON AND STEEL	1100 SEMINARY ST	ROCKFORD
(16)BEHR METALS	208 QUAKER RD	ROCKFORD
(16)BLUEWATER THERMAL SOLUTIONS	5136 27 <sup>TH</sup> AVE	ROCKFORD
(19)BREMNER FOOD GROUP INC	1450 PATE PLAZA	SOUTH BELOIT
(22)BUCKEYE TERMINALS	1511 S MERIDIAN RD	ROCKFORD
(17)CARRIER COMMERCIAL REGRIDERATION INC	750 N BLACKHAWK BLVD	ROCKTON
(16)CHEM PROCESSING	3910 LINDEN OAK DR	ROCKFORD
(16)CHEM PROCESSING INC	715 N MADISION ST	ROCKFORD
(16)CINTAS CORP	5100 26 <sup>TH</sup> AVE	ROCKFORD
(15)CLEAN HARBORS PECATONINCA INC	6125 N PECATONICA RD	PECATONICA
(9)COCA COLA REFRESHMENTS	10400 N SECOND ST	MACHESNEY PARK
(16)COMMONWEALTH EDISON	123 ENERGY DR	ROCKFORD
(16)COMMONWEALTH EDISION TDC389	2093 N BELL SCHOOL RD	ROCKFORD
(10)COMMONWEALTH EDISION TSS164	5900 MATERIAL AVE	LOVES PARK
(16)COMMONWEALTH EDISION TSS194	123 ENERGY DR	ROCKFORD
(16)CONCENTRIC ROCKFORD INC	2222 15 <sup>TH</sup> AVE	ROCKFORD
(22)CONSERV FS INC	1925 S MERIDIAN RD	ROCKFORD
(9)CURTIS METAL FISHING COMPANY	9917 N ALPINE RD	MACHESNEY PARK
(9)CURTIS THERMAL PROCESSING	10911 N SECOND ST	MACHESNEY PARK
(10)DANFOSS DRIVES	4401 N BELL SCHOOL RD	LOVES PARK
(10)DANFOSS DRIVES	7500 BEVERAGE BLVD	LOVES PARK
(16)DASCO PRO INC	2215 KISWAUKEE ST	ROCKFORD
(16)DIAMOND HEAT TREAT INC	3691 PUBLISHERS DR	ROCKFORD
(16)ECLIPSE	1665 ELMWOOD RD	ROCKFORD
(16)ECOLAB	5151 E ROCKTON RD	ROSCOE
(19)ECOLAB	3732 PRAIRIE HIL RD	SOUTH BELOIT
(16)ENGINEERED POLYMER SOLUTIONS	1215 NELSON BLVD	ROCKFORD

NOTE- Number in first column indicates the fire department with jurisdiction. See Appendix 2

## A. EHS-GENERAL CONT.

(16)ERG ROCKFORD ENERGY ROCKFORD INC	136 HARRISON AVE	ROCKFORD
(16)ESTWING MANUFACTURING CO INC	2647 8 <sup>TH</sup> ST	ROCKFORD
(10)FASTENAL COLD HEADING	5800 INDUSTRIAL AVE	LOVES PARK
(16)FIBERGLASS INNOVATIONS LLC	2219 KISWAUKEE ST	ROCKFORD
(17)FIRST STUDENT INC #27010	720 N BLACKHAWK BLVD	ROCKTON
(19)FLYING J TRAVEL PLAZA	14049 WILLOWBROOK RD	SOUTH BELOIT
(16)G & K SERVICES	5611 11 <sup>TH</sup> ST	ROCKFORD
() G & K SERVICES		
(19)GARDNER ABRASIVES	481 GARDNER ST	SOUTH BELOIT
(10)GE AVIATION	1354 CLIFFORD AVE	LOVES PARK
(10)GKN ROCKFORD INC	1200 WINDSOR RD	LOVES PARK
(10)GLEASON CUTTING TOOLS COOPERATION	1351 WINDSOR RD	LOVES PARK
(16)GREENLEE TEXTRON INC	1222 RESEARCH PKWY	ROCKFORD
(16)GUNITE COOPERATION	302 PEOPLES AVE	ROCKFORD
(16)HOLLAND INC	1751 NEW MILFORD SCHOOL	ROCKFORD
(9)IL ARMY NATIONAL GUARD	10045 N SECOND ST	MACHESNEY PARK
(6)INGERSOLL CUTTING TOOL COMPANY	885 S LYFORD RD	ROCKFORD
(16)INNOVATIVE FIXTURE SOLUTIONS	1122 N MILFORD AVE	ROCKFORD
(16) INTERGRATED HOMECARE SERVICES	5027 HARRISON AVE	ROCKFORD
(16)INTERNATIONAL PAPER	2100 23 <sup>RD</sup> AVE	ROCKFORD
(16)IPSEN CERAMICS INC	325 JOHN ST	ROCKFORD
(16)J & M PLATING INC	4500 KISWAUKEE ST	ROCKFORD
(16)J.L. CLARK PLASTIC DIVISION	1109 23 <sup>RD</sup> AVE	ROCKFORD
(16)J.L. CLARK ROCKFORD METALS	923 23 <sup>RD</sup> AVE	ROCKFORD
(16)JACOBSON WAREHOUSE COMPANY	749 SOUTHRIDGE DR	ROCKFORD
(16)K & J FINNISHING INC	716 CEDAR ST	ROCKFORD
(16)LJ FABRICATORS	944 RESEARCH PKWY	ROCKFORD
(16)LAMSON OIL COMPANY	2217 20 <sup>TH</sup> AVE	ROCKFORD
(16)LIEBOVICH STEEL AND ALUMINUM	2116 PRESTON ST	ROCKFORD
(16)LOWES	7130 E STATE ST	ROCKFORD
(9)LOWES	9700 N ALPINE RD	MACHESNEY PARK
(16)LOWES	2801 S SPRINGFIELD AVE	ROCKFORD
(22)MARATHON ROCKFORD TERMINAL	7312 CUNNINGHAM RD	ROCKFORD
(16)MEYER MATERIAL CO	423 S MADISON ST	ROCKFORD
(9)MID-STATES CONCRETE INDUSTRIES	500 SOUTH PARK AVE	SOUTH BELOIT
(22)MIKRON MIDWEST	301 N ELIDA ST	WINNEBAGO

NOTE- Number in first column indicates the fire department with jurisdiction. See Appendix 2

## A. EHS- GENERAL CONT.

(16)MNP PRICISION PARTS	1111 SAMUELSON RD	ROCKFORD
(13)MONDELEZ GLOBAL LLC	5500 FOREST HILLS RD	LOVES PARK
(16)MTE HYDRAULICS INC	4701 KISWAULKEE ST	ROCKFORD
(2)MULLER PINEJURST DAIRY INC	2110 OGILBY RD	ROCKFORD
(16)NUCO2 INC	4699 COLT RD	ROCKFORD
(22)ONEOK NORTH SYSTEM LLC	7351 CUNNINGHAM RD	ROCKFORD
(16)OSF ST ANTHONYS MEDICAL CENTER	5666 E STATE ST	ROCKFORD
(16)OWENS CORNING FOAM INSULATION LLC	2710 LAUDE ST	ROCKFORD
(18) PEARL CITY ELEVATOR	8505 FREEPORT RD	DURAND
(16)PENSKE TRUCK LEASING CO LP	4617 SANDY HOLLOW RD	ROCKFORD
(10)PEPSI COLA OF ROCKFORD	7550 BEVERAGE BLVD	ROCKFORD
(16) PIERCE BIOTECHNOLOGY INC	3747 N MERIDIAN RD	ROCKFORD
(10)PROGESSIVE STEEL TREATING INC	922 LAWN DR	LOVES PARK
(2)ROCK RIVER WATER RECLAMATION DISTRICT	3333 KISWAUKEE ST	ROCKFORD
(16)ROCK ROAD COMPANIES INC	801 BEALE CT	ROCKFORD
(10) ROCK VALLEY OILAND CHEMICAL CO	1911 WINDSOR RD	LOVES PARK
(16)ROCKFORD FOUNDRIES INC	212 MILL ST	ROCKFORD
(16)ROCKFORD HEALTH SYSTEM	2400 N ROCKTON AVE	ROCKFORD
(16)ROCKFORD HEAT TREATERS INC	4704 AMERICAN RD	ROCKFORD
(16)ROCKFORD PRODUCTS	707 HARRISON AVE	ROCKFORD
(16)ROCKNEL FASTENER INC	5319 11 <sup>TH</sup> ST	ROCKFORD
(16)ROGERS BROTHERS INC	1925 KISWAUKEE	ROCKFORD
(16)RYDER TRANSPORTATIONS SERVICES	3573 MERCHANDISE RD	ROCKFORD
(16)SAMS CLUB #8297	7151 WALTON ST	ROCKFORD
(16)SHERWIN WILLIAMS ROCKFORD POWDER PLANT	4472 TECHNOLOGY DR	ROCKFORD
(16)SMITH OIL CORPERATION	2120 16 <sup>TH</sup> ST	ROCKFORD
(9)SOURCEONE HEALTHCARE TECHNOLOTIES INC	8101 BURDEN DR	MACHESNEY PARK
(16)SPX HYDRAULICS TECHNOLOGIES	5885 11 <sup>TH</sup> ST	ROCKFORD
(16)SWEDISH AMERICAN HOSPITAL	1401 E STATE ST	ROCKFORD
(0) TAYLOR FREEZER		
(9)TERRA HARVEST FOODS	7166 GREENLEE DR	CALEDONIA
(10)TERRA HARVEST FOODS INC	2154 HARLEM RD	LOVES PARK
(2)THE HOME CITY ICE COMPANY	2110 OGILBY RD	ROCKFORD
(16)HOME DEPOT	6930 ARGUS DR	ROCKFORD
(9)HOME DEPOT	1580 WEST LANE	MACHESNEY PARK

NOTE- Number in first column indicates the fire department with jurisdiction. See Appendix 2



**A. EHS- GENERAL CONT.**

(9)TOE DIE CASTING CO INC	13910 DEARBORN AVE	SOUTH BELOIT
(16)UDL LABORATORIES	4951 HIAWATHA DR	ROCKFORD
(16)UDL LABORATORIES	1718 NORTHROCK CT	ROCKFORD
(16)UPS AIR HUB	3300 AIRPORT DR	ROCKFORD
(16)UPS FUEL FARM	881 AIRPORT DR	ROCKFORD
(16)UTC AIROSPACE SYSTEMS	2421 11 <sup>TH</sup> ST	ROCKFORD
(16)UTC AIROSPACE SUSTEMS	4747 HARRISON AVE	ROCKFORD
() VALSPAR		
(16)VIKING CHEMICAL CO	1827 18 <sup>TH</sup> AVE	ROCKFORD
(22)WEST SHORE PIPE LINE CO	7245 CUNNINGHAM RD	ROCKFORD
(16) WILLIAM CHARLES CONSTRUCTION	6230 KISHWAUKEE RD	ROCKFORD
(10)WILLIAM CHARLES CONSTRUCTION	5300 NIMTZ RD	LOVES PARK
(10)WILLIAM CHARLES CONSTRUCTION	5290 NIMTZ RD	LOVES PARK
(16)WINDSTREAM NORLIGHT ROCKFORD	555 S MAIN ST	ROCKFORD
(16)WOODS EQUIPMENT COMPANY	1518 ELMWOOD RD	ROCKFORD
(10)WOODWARD INC	5001 N SECOND ST	LOVES PARK
(10)ZENITH CUTTER INC	5200 ZENITH PKWY	LOVES PARK

**B. EHS- TELECOMMUNICATIONS**

(16)AT&T	2404 8 <sup>TH</sup> AVE	ROCKFORD
(10)AT&T	910 HARLEM RD	LOVES PARK
(16)AT&T	211-213 N CHURCH ST	ROCKFORD
(16)AT&T	216 N MAIN ST	ROCKFORD
(16)AT&T	5610 NEWBURG RD	ROCKFORD
(16)AT&T	1239 SANDY HALLOW RD	ROCKFORD
(16)COMCAST	4115 N MULFORD RD	ROCKFORD
(16)COMCAST	4450 KISWAUKEE RD	ROCKFORD
(6)FRONTIER COMMUNICATIONS	1308 TERRY RD	CHERRY VALLEY
(9)FRONTIER COMMUNICATIONS	11059 MAIN ST	ROSCOE
(16)FRONTIER COMMUNICATIONS	5959 20 <sup>TH</sup> ST	ROCKFORD
(22)FRONTIER COMMUNICATIONS	200 N PECATONICA ST	WINNEBAGO
(9)NEW CINGULAR WIRELESS	6914-7298 SWANSON RD	ROSCOE
(16)US CELLULAR	1130 E STATE ST	ROCKFORD
(16)VERIZON	1415 E STATE ST	ROCKFORD
(14)VERIZON	7093 OLD RIVER RD	ROCKFORD

NOTE- Number in first column indicates the fire department with jurisdiction. See Appendix 2

**B. EHS- TELECOMMUNICATIONS CONT.**

(9) VERIZON	7754 ELEVATOR RD	ROSCOE
(9) VERIZON	7664 MITCHELL RD	ROSCOE
(10) VERIZON	5601 HARLEM RD	LOVES PARK
(21) VERIZON	1550 N MEMORIAL BLVD	ROCKFORD

---

**C. EHS- PROPANE**

(9) AIRGAS MIDWEST	10853 N SECOND ST	LOVES PARK
(16) AIRGAS MIDWEST	4646 LINDEN RD	ROCKFORD
(19) BLACKHAWK PROPANE COMPANY INC	1000 DONER DR	ROCKFORD
(16) FERRELLGAS	4498 STEWART RD	ROCKFORD
(16) FERRELLGAS	2340 15 <sup>TH</sup> ST	ROCKFORD
(9) FERRELLGAS	10522 N SECOND ST	LOVES PARK
(16) NICOR GAS	4651 LINDEN RD	ROCKFORD

APPENDIX 2

FIRE DEPARTMENTS SERVING WINNEBAGO COUNTY

MABAS DIVISION 8

(1) Belvidere	123 S State St., Belvidere, IL 61008	815-544-2242
(2) Blackhawk	3738 South Main St, Rockford, IL 61102	815-962-1584
(3) Boone County District 1	120 W Ogden St., Capron, IL 61012	815-569-2061
(4) Boone County Rural District 2	1777 Henry Luckow Ln., Belvidere, IL 61008	815-544-3336
(5) Bryon	123 N Franklin St., Byron, IL 61010	815-234-4911
(6) Cherry Valley	120 E State St., Cherry Valley, IL 61016	815-332-5382
(7) Durand	115 W Howard St., Durand, IL 61024	815-248-2696
(8) Greater Rockford Airport	60 Airport Dr., Rockford, IL 61109	815-969-4000
(9) Harlem-Roscoe	10544 Main St., Roscoe, IL 61073	815-623-7867
(10) Loves Park	400 Grand Ave., Loves Park, IL 61111	815-654-5030
(11) New Milford	2177 Will James St., Rockford, IL 61109	815-874-4880
(12) North Boone District 3	305 W Grove St., Poplar Grove, IL 61065	815-765-3366
(13) North Park	600 Wood Ave., Machesney Park, IL 61115	815-636-3051
(14) Northwest	3222 N Central Ave., Rockford, IL	815-963-8891
(15) Pecatonica	1221 Main St., Pecatonica, IL 61063	815-239-2513
(16) Rockford	204 S First St., Rockford, IL 61104	815-987-5645
(17) Rockton	201 N Blackhawk Blvd., Rockton, IL 61072	815-624-6010
(18) Shirland	13086 Mitchell St., Shirland, IL 61079	815-629-2341
(19) South Beloit	402 Clark St., South Beloit, IL 61080	815-389-3401
(20) Stillman Valley	200 S Rural Rd., Stillman Valley, IL 61084	815-645-8110
(21) West Suburban	3816 W State St., Rockford, IL 61102	815-964-3441
(22) Winn-Bur-Sew	110 E Main St., Winnebago, IL 61088	815-335-2651

APPENDIX 3

LIST OF SCHOOLS WITHIN WINNEBAGO COUNTY IL

CHARTER

Name	Address	City	Number
CICS Jackson	315 Summit St	Rockford	815-316-0093
Legacy Academy of Excellence	4029 Prairie Rd	Rockford	815-961-1100
Galapagos Rockford	2605 School St	Rockford	815-708-7946

SPECIAL SCHOOLS

Name	Address	City	Number
Denis Early Childhood	730 Lincoln Park Blvd	Rockford	815-490-5410
Dolan Center Maryville Farm	10104 Farm School Rd	Durand	815-599-3975
Fairview Center	512 Fairview Ave	Rockford	815-277-8400
Roosevelt Center	978 Haskell Ave	Rockford	815-966-3250
Summerdale Early Childhood	3320 Glenwood Ave	Rockford	815-966-3750
Wilson ASPIRE	520 N Pierpont Ave	Rockford	815-966-3770

PRIVATE SCHOOLS

Name	Address	City	Number
Allegro Academy	6413 Forest Hills Rd	Rockford	815-877-1489
Abounding Grace Christian	518 N Court St	Rockford	815-315-3244
Alpine Academy	5001 Forest View Ave	Rockford	815-227-8894
Alpine Christian	325 N Alpine Rd	Rockford	815-399-0880
Berean Baptist	5626 Safford Rd	Rockford	815-962-4841
Boylan Central Catholic	4000 St Francis Dr.	Rockford	815-877-0531
Cathedral Baptist	5622 35 <sup>th</sup> Ave	Rockford	815-874-3883
Christian Life	5950 Spring Creek Rd	Rockford	815-877-5749
Concordia Lutheran	7424 N 2 <sup>nd</sup> St	Machesney Park	815-633-6450
Crossroad Learning Center	625 Adams St	Rockford	815-489-0560
Firstborn Christian Academy	8213 N Alpine Rd	Machesney Park	815-633-0030
Holy Family	4407 Highcrest Rd	Rockford	815-398-5331
Keith Country	1 Jacoby Pl	Rockford	815-399-8823
Lydia Urban Academy	223 S Winnebago St	Rockford	815-966-0039
Montessori Learning Path	200 N 1 <sup>st</sup> St	Rockford	815-964-1700
Montessori Private Academy	8101 Sayer Rd	Rockford	815-332-8101
Mt Sinai Learning Academy	1901 W State St	Rockford	815-987-5743
North Love Christian	5301 E Riverside Blvd	Rockford	815-877-6021
Our Lady Sacred Heart Academy	3218 11 <sup>th</sup> St	Rockford	815-399-3021
Rainbow Academy	6419 Forest Hills Rd	Rockford	815-877-7980
Rockford Christian	1401 N Bell School Rd	Rockford	815-391-8000
Rockford Iqra	5925 Darlene Rd	Rockford	815-397-6899
Rockford Kindercare	308 N Mulford Rd	Rockford	815-3982800

Rockford Lutheran	3411 N Alpine Rd	Rockford	815-877-9551
Rock River Academy	3445 Elmwood Rd	Rockford	815-877-3440
Sacred Heart Classical Center	3330 Maria Linden Dr.	Rockford	815-543-1193
Spectrum	2909 N Main St	Rockford	815-877-1600
St Bernadette	2300 Bell Ave	Rockford	815-968-2288
St Bridget	604 Clifford Ave	Loves Park	815-633-8255
St Edward	3020 11 <sup>th</sup> St	Rockford	815-398-2631
St James	409 N 1 <sup>st</sup> St	Rockford	815-962-8515
St Paul C O G I C Academy	1001 Washington Ave	Rockford	815-965-4308
St Paul Lutheran	811 Locust St	Rockford	815-965-3335
St Peters	1231 N Court St	Rockford	815-963-3620
St Rita	6284 Valley Knoll Dr.	Rockford	815-398-3466
The Ryan Jury Child Dev	122 Williams Park	Rockford	815-489-9501
Wee Care Day Care	623 E Jefferson St	Rockford	815-968-9366

#### DURAND COMMUNITY UNIT SCHOOL DISTRICT 322

Name	Address	City	Number
Durand Elementary School	200 W South St	Durand	815-248-2171
Durand Junior High School	200 W South St	Durand	815-248-2171
Durand High School	200 W South St	Durand	815-248-2171

#### HARLEM SCHOOL DISTRICT 122

Name	Address	City	Number
Donald C Parker Center	808 Harlem Rd	Machesney Park	815-654-4559
Loves Park Elementary	344 Grand Ave	Loves Park	815-654-4501
Machesney Elementary	8615 N 2 <sup>nd</sup> St	Machesney Park	815-654-4509
Maple Elementary	1405 Maple Ave	Loves Park	815-654-4502
Marquette Elementary	8500 Victory Ln	Machesney Park	815-654-4503
Olson Park Elementary	1414 Minahan Dr.	Machesney Park	815-654-4504
Ralston Elementary	8605 N 2 <sup>nd</sup> St	Machesney Park	815-654-4505
Rock Cut Elementary	7944 Forest Hills Rd	Machesney Park	815-654-4506
Windsor Elementary	935 Windsor Rd	Machesney Park	815-654-4507
Harlem Middle School	735 Windsor Rd	Machesney Park	815-654-4510
Harlem High School	1 Huskie Circle	Machesney Park	815-654-4511

#### HONNONEGAH COMMUNITY HIGH SCHOOL DISTRICT 207

Honnonegah High School	307 Salem St.	Rockton	815-624-2070
------------------------	---------------	---------	--------------

#### KINNIKINNIK COMMUNITY CONSOLIDATED SCHOOL DISTRICT 131

Name	Address	City	Number
Ledgewood Elementary	11685 Southgate Rd	Roscoe	815-623-2118
Stone Creek Elementary	11633 Southgate Rd	Roscoe	815-623-2865
Kinnikinnik	5410 Pine Ln	Roscoe	815-623-2166
Roscoe Middle School	6121 Elevator Rd	Roscoe	815-623-2837

PECATONICA COMMUNITY UNIT SCHOOL DISTRICT 321

Name	Address	City	Number
Pecatonica Elementary	721 Reed St	Pecatonica	815-239-2550
Pecatonica Middle School	1200 Main St	Pecatonica	815-239-2612
Pecatonica High School	1300 Main St	Pecatonica	815-239-2611

PRAIRIE HILL COMMUNITY CONSOLIDATED SCHOOL DISTRICT 133

Prairie Hill Elementary	14714 Willowbrook Rd	South Beloit	815-389-3957
Willowbrook Middle School	6605 Prairie Hill Rd	South Beloit	815-389-3967

ROCFORD PUBLIC SCHOOL DISTRICT 205

Name	Address	City	Number
Dennis Early Childhood Center	730 Lincoln Park Ave	Rockford	815-490-5410
Fairview Early Childhood	512 Fairview Ave	Rockford	815-227-8400
Summerdale Early Childhood	3320 Glenwood Ave	Rockford	815-966-3750
Beyer Elementary	333 15 <sup>th</sup> Ave	Rockford	815-966-3390
Bloom Elementary	2912 Brendenwood Ave	Rockford	815-229-2170
Brookview Elementary	1750 Madron Ln	Rockford	815-229-2492
Carlson Elementary	4015 Pepper Dr.	Rockford	815-654-4955
Cherry Valley Elementary	619 E State St	Cherry Valley	815-332-4938
Conklin Elementary	3003 Halsted Rd	Rockford	815-654-4860
Ellis Elementary	222 S Central Ave	Rockford	815-966-3909
Froberg Elementary	4555 20 <sup>th</sup> St	Rockford	815-874-2464
Gregory Elementary	4820 Carol Court	Rockford	815-229-2176
Hillman Elementary	3701 Green Dale Dr.	Rockford	815-229-2835
Maud E Johnson Elementary	3805 Rural St	Rockford	815-229-2485
King Elementary	1306 S Court St	Rockford	815-966-3740
Kishwaukee Elementary	526 Catlin St	Rockford	815-966-3380
Lathrop Elementary	2603 Clover Ave	Rockford	815-966-3285
Lewis Lemon Elementary	1993 Mulberry St	Rockford	815-967-8000
Marsh Elementary	2021 Hawthorne Dr.	Rockford	815-229-2430
McIntosh Elementary	525 N Pierpont Ave	Rockford	815-966-3275
Nashold Elementary	3303 20 <sup>th</sup> St	Rockford	815-229-2155
Nelson Elementary	623 15 <sup>th</sup> Ave	Rockford	815-229-2190
Riverdahl Elementary	3520 Kishwaukee St	Rockford	815-229-2870
Rolling Green Elementary	3615 W Gate Pkwy	Rockford	815-229-2881
Spring Creek Elementary	5222 Spring Creek Rd	Rockford	815-654-4960
A C Thompson Elementary	4949 Marion Ave	Rockford	815-966-3000
Walker Elementary	1520 Post Ave	Rockford	815-966-3795
Welsh Elementary	2100 Huffman Blvd	Rockford	815-966-3560
West View Elementary	1720 Halsted Rd	Rockford	815-654-4945
White Swan Elementary	7550 Mill Rd	Rockford	815-229-2184
Whitehead Elementary	2325 Ohio Pkwy	Rockford	815-229-2840
Eisenhower Middle School	3525 Spring Creek Rd	Rockford	815-229-2450
Flinn Middle School	2525 Ohio Pkwy	Rockford	815-229-2800

Name	Address	City	Number
Kennedy Middle School	520 N Pierpont Ave	Rockford	815-654-4880
Lincoln Middle School	1500 Charles St	Rockford	815-229-2400
RESA Middle School	1800 Ogilby Rd	Rockford	815-489-5509
West Middle School	1900 N Rockton Ave	Rockford	815-966-3200
Auburn High School	5110 Auburn St	Rockford	815-966-3300
East High School	2929 Charles St	Rockford	815-229-2100
Guilford High School	5620 Spring Creek Rd	Rockford	815-654-4870
Jefferson High School	4145 Samuelson Rd	Rockford	815-874-9536
West High School	2929 Charles St	Rockford	815-229-2100

#### ROCKTON SCHOOL DISTRICT

DISTRICT NUMBER: 815-624-7143

Name	Address	City	Number
Rockton Grade School	1050 E Union St	Rockton	815-624-8585
Whitman Post Elementary	1060 E Union St	Rockton	815-624-4006
Stephan Mack Middle School	11810 Old River Rd	Rockton	815-624-2611

#### SHIRLAND COMMUNITY CONSOLIDATED SCHOOL DISTRICT 134

Name	Address	City	Number
Shirland Consolidate Community	8020 North St	Shirland	815-629-2000

#### SOUTH BELOIT COMMUNITY UNIT SCHOOL DISTRICT 320

Name	Address	City	Number
Blackhawk Elementary	840 Blackhawk Blvd	South Beloit	815-389-4001
Clark Elementary	464 Oak Grove St	South Beloit	815-389-2311
Riverview Elementary	306 Miller St	South Beloit	815-389-1231
South Beloit Jr High	840 Blackhawk Blvd	South Beloit	815-389-1421
South Beloit High School	245 Prairie Hill Rd	South Beloit	815-389-9004

#### WINNEBAGO COMMUNITY UNIT SCHOOL DISTRICT 323

Name	Address	City	Number
Dorothy Simon Elementary	309 S Benton St	Winnebago	815-335-2318
Jean McNair Elementary	304 E McNair Rd	Winnebago	815-335-1607
Winnebago Middle School	407 N Alida St	Winnebago	815-335-2364
Winnebago High School	200 E McNair Rd	Winnebago	815-335-2336

DAYCARES/CHILD CARE CENTERS

Name	Address	City	Number
Antzy Pants Preschool	503 Main St	Pecatonica	815-239-9080
Blackhawk Learning Connection	421 Buckbee St	Rockford	815-962-8853
Christ the Rock Lutheran	8330 Newburg Rd	Rockford	815-332-5551
Christ United Methodist Church	4509 Highcrest Rd	Rockford	815-398-1458
Circles of Learning	2907 N Main St	Rockford	815-636-3820
Creative Learners II	112 S Cherry St	Cherry Valley	815-332-9653
Cross and Crowns Preschool	7404 Elevator Rd	Roscoe	815-623-3273
East Riverside KinderCare	6473 E Riverside Blvd	Rockford	815-636-2200
Fairgrounds Head Start	612 N Church St	Rockford	815-987-5480
Grace Lutheran	343 Grand Ave	Rockford	815-282-6114
Hiland Hill Preschool	2101 E State St	Rockford	815-397-4212
KinderCare Learning Center	308 N Mulford Rd	Rockford	815-398-2800
Maray Drive KinderCare	4345 Maray Dr.	Rockford	815-226-9090
Montessori Private Academy	8101 Sayer Rd	Rockford	815-332-8101
Mt Olive Early Childhood	2001 N Alpine Rd	Rockford	815-399-3171
Old Stone Preschool	550 S Blackhawk Blvd	Rockton	815-624-7872
Orton Keyes Head Start	653 Ranger St	Rockford	815-969-6565
Pecatonica Preschool	528 Pecatonica St	Pecatonica	815-239-2285
Playtown Preschool	3300 Rural St	Rockford	815-399-0531
Rainbow Learning Center	6419 Forest Hills Rd	Rockford	815-877-7980
Rockford Day Nursery	2323 S 6 <sup>th</sup> St	Rockford	815-962-0834
RSH Children's Learning Center	2918 Glenwood Ave	Rockford	815-971-4176
Shepard of the Valley Preschool	2715 S Mulford Rd	Rockford	815-397-5880
St Andrew Lutheran	511 W Rockton Rd	Rockton	815-624-6051
Stepping Stones	11364 2 <sup>nd</sup> St	Roscoe	815-623-7282
Tender Beginnings Learning Center	2722 Broadway	Rockford	815-399-5512
Trinity Day Care	215 N 1 <sup>st</sup> St	Rockford	815-986-5437
Winnebago Preschool	106 S Benton St	Winnebago	815-335-7445
World of Dreams	14465 De La Tour Dr.	South Beloit	815-624-8900



APPENDIX 4

NURSING HOMES AND ASSISTED LIVING FACILITIES

NURSING HOMES AND ASSISTED LIVING FACILITIES – ROCKFORD

Name	Address	Phone
Alma Nelson Manor	550 S Mulford Rd	815-339-4914
Alden Park Strathmoor	5668 Strathmoor Dr.	815-229-5200
Alpine Fireside Health Center	3650 N Alpine Rd	815-877-7408
Amberwood Care Center	2313 N Rockton Ave	815-964-2200
Anam Care Inc.	8104 Sayer Rd	815-332-5566
Anam Glen	7978 Newburg Rd	815-332-1919
Asta Care Center of Rockford	707 W Riverside Blvd	815-877-5752
The Atrium	2885 McFarland Rd	815-282-3340
Bickford House	960 N Mulford Rd	815-397-7100
Canterbury Place	2503 Canterbury Ln	815-965-1778
Christian Life Retirement Center	5921 Allerton Dr.	815-316-0490
Christian Life Retirement Center	250 Bienterra Trail	815-277-1400
Christian Life Retirement Center	2750 Mulford Rd	815-633-5544
Courtyard Terrace	2313 N Rockton Ave	815-964-2200
Crimson Pointe	7130 Crimson Ridge Dr.	815-398-7792
Debes Corporation	6122 Mulford Village Dr.	815-229-1848
Emeritus at Rockford	1545 Temple Ln	815-332-8484
Estate Care	8712 Oakwood Glen Dr.	815-332-3298
Fairhaven Christian Retirement	3470 N Alpine Rd.	815-877-1441
Forest City Rehab and Nursing	321 Arnold Ave	815-397-5531
Glenwood Villa	3247 Glenwood Ave	815-965-1043
Grand Victorian	3495 McFarland Rd	815-654-1400
Hallam Terrace	1108 Taylor St	815-963-0570
Heritage Woods of Rockford	202 N Show PI Dr.	815-332-3700
Highview Retirement Home	4149 Safford Rd	815-964-3368
Hospice Care of America	3815 N Mulford Rd #4	815-316-2700
Independence Village	3655 N Alpine Rd	815-282-9696
Lenden Maria	3330 Maria Linden Dr.	815-877-7416
Lifehouse the Atrium	7885 McFarland Rd	815-282-3340
Locustwood Health Care	3520 School St	815-968-4280
Loyalton of Rockford	1545 Temple Ln OFC	815-332-9972
Luther Center	111 W State St	815-965-0055
Morning Star Village	1160 N Mulford Rd	815-484-9500
Oakridge Manor	2885 McFarland Rd	815-282-3340
Olson Terrace	3006 Alida St	815-963-0355
P A Peterson Center for Health	1311 Parkview Ave	815-399-8832
Park Strathmoor Nursing Home	5668 Strathmoor Dr.	815-229-5200
Park Ridge Terrace	6131 Park Ridge Rd	815-633-6810

Peterson Meadows Retirement	6401 Newburg Rd	815-229-0390
Presence Cor Mariae Center	3330 Maria Linen Dr.	815-877-7416
Provena St Anne Center	4405 Highcrest Rd	815-229-1999
River Bluff Nursing Home	4401 N Main St	815-877-8061
River Oaks Retirement	2400 S Main St	815-964-3890
Robert Webb Terrace	3016 Alida St	815-963-8544
Rockford Healthcare Center	310 Arnold Ave	815-398-7954
Rockford Supportive Living	2114 Kishwaukee St	815-966-1030
Rock River Health Care	707 W Riverside Blvd	815-877-5752
Rockton Court	2615 N Rockton Ave	815-965-4198
Rosewood Care Center	1660 S Mulford Rd	815-397-8700
Seborg Terrace	3024 Alida St	815-963-0332
Springwood on Main	1920 N Main St	815-964-6834
St Anne Center	4405 Highcrest Rd	815-229-1999
Walter Lawson Children's Home	1820 Walter Lawson Dr.	815-633-6636
Wesley Willows Alzheimer's	4054 Albright Ln	815-637-4349
Wesley Willows	4141 N Rockton Ave	815-654-2534
Willows on Main	1920 N Main St	815-964-6834

APPENDIX 5

NURSING HOMES AND ASSISTED LIVING FACILITIES – OUTSIDE ROCKFORD

BELVIDERE

Biltmore Rehab and Nursing	1701 5 <sup>th</sup> Ave	Belvidere	815-547-5451
Heritage Woods of Belvidere	1444 N State St	Belvidere	815-544-9495
Maple Crest Care Center	4452 Squaw Prairie Rd	Belvidere	815-547-6377
Parkside Manor	628 W Lincoln Ave	Belvidere	815-547-7595
Northwoods Care Center	2250 Pearl St	Belvidere	815-544-0358

BYRON

Neighbors Nursing Home	811 W 2 <sup>nd</sup> St	Byron	815-234-2511
------------------------	--------------------------	-------	--------------

DURAND

Medina Manor Retirement Center	402 S Center St	Durand	815-248-2151
--------------------------------	-----------------	--------	--------------

LOVES PARK

East Bank Center	6131 Park Ridge Rd	Loves Park	815-633-6810
Lincolnshire Place of Loves Park	6617 Broadcast Pkwy	Loves Park	815-633-5880

SOUTH BELOIT

Fair Oaks Health Care Center	1515 Blackhawk Blvd	South Beloit	815-389-3911
Sandcastle Community Center	201 S 8 <sup>th</sup> St	South Beloit	815-389-0121

ROCKTON

Highview in the Woodlands	1000 Falcon Point Place	Rockton	815-624-6700
---------------------------	-------------------------	---------	--------------

ROSCOE

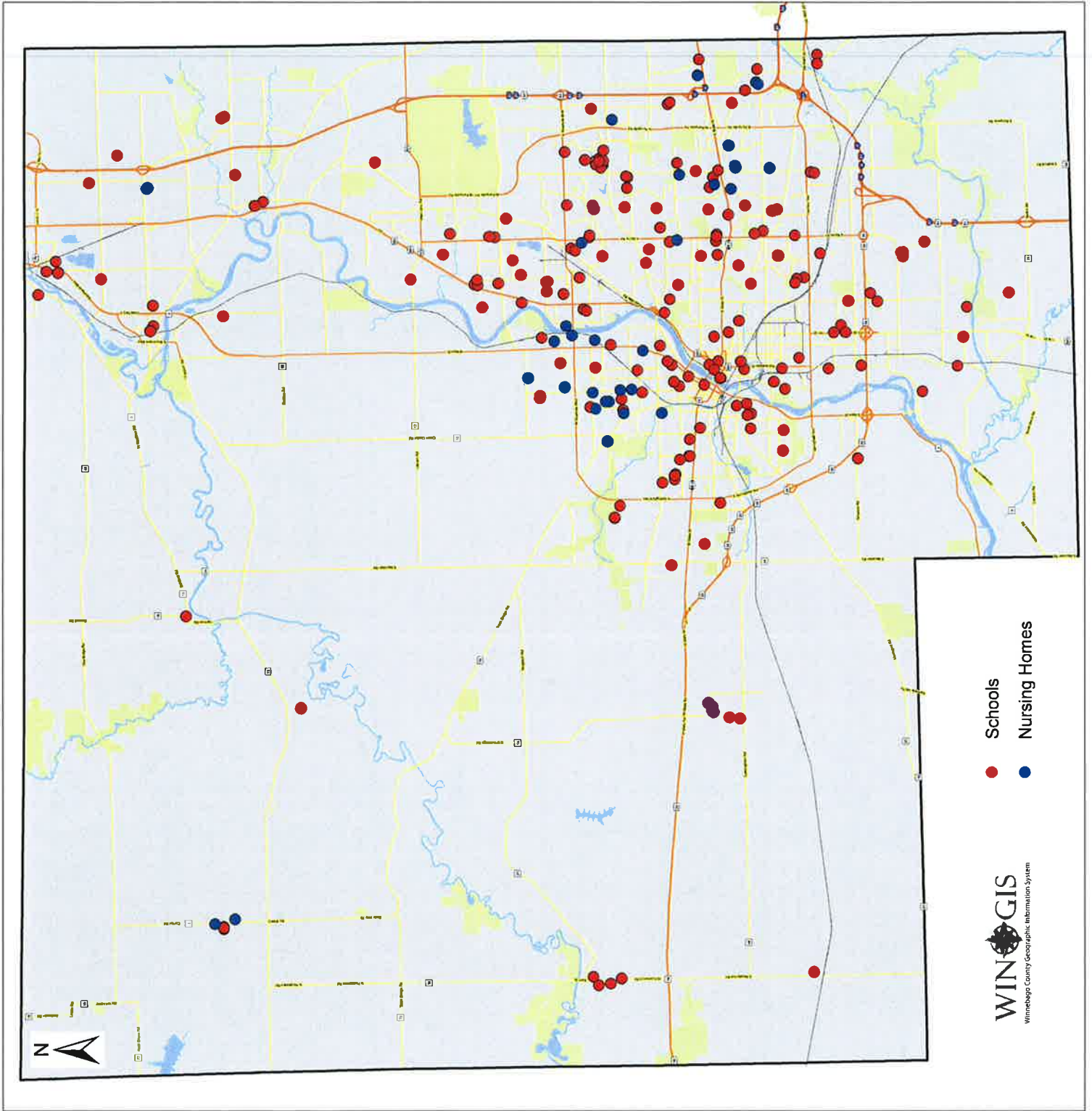
Northpointe Terrace	5601 E Rockton Rd	Roscoe	815-525-4800
---------------------	-------------------	--------	--------------

OREGON

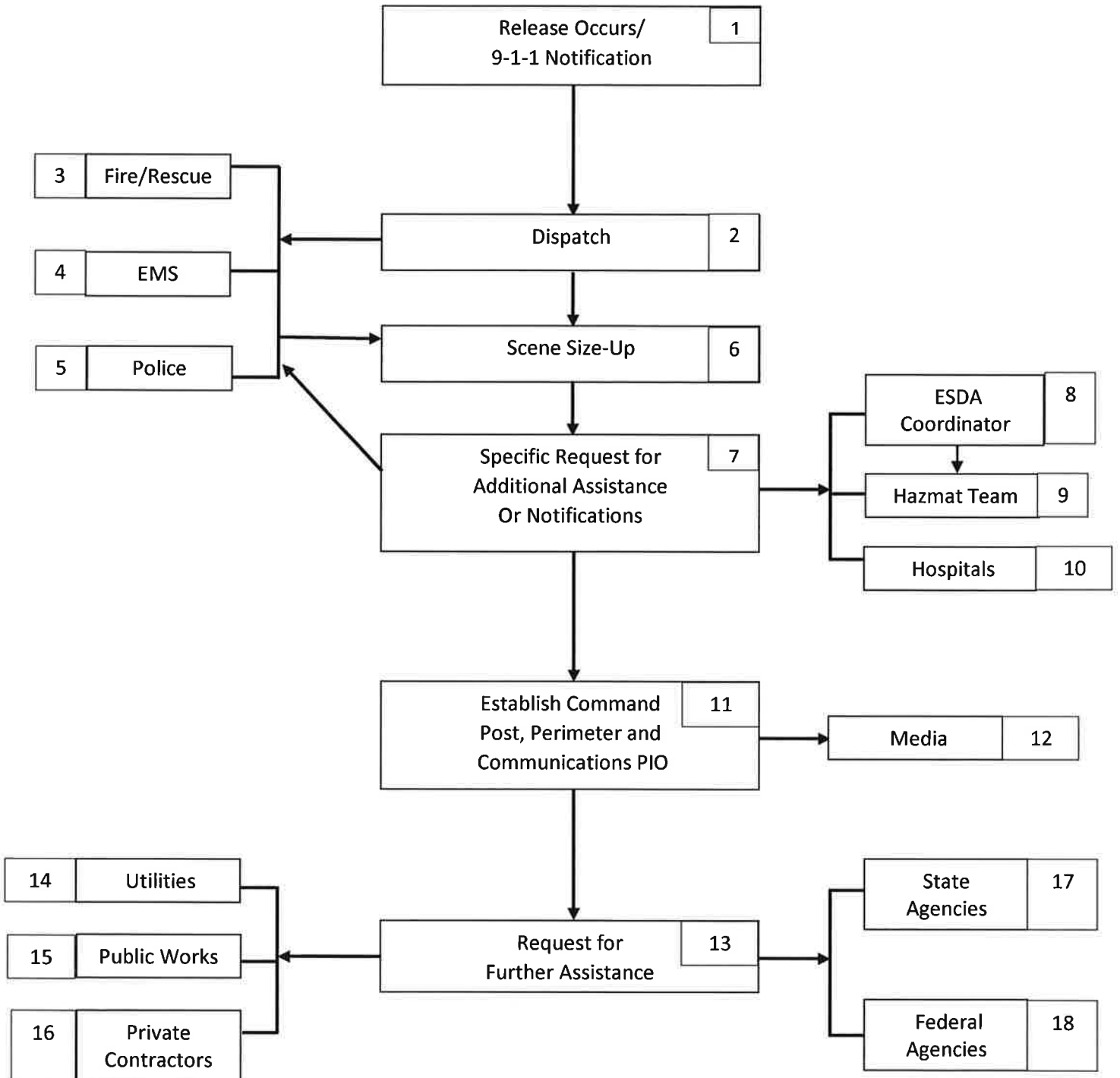
Oregon Healthcare Center	811 S 10 <sup>th</sup> St	Oregon	815-732-7994
--------------------------	---------------------------	--------	--------------

WINNEBAGO

Prairieview Assisted Living	500 E McNair Rd	Winnebago	815-335-1800
-----------------------------	-----------------	-----------	--------------



INDEX 6  
INCIDENT FLOW CHART



## EMERGENCY RELEASE NOTIFICATION FACT SHEET

**A. Immediate telephone notification shall be given by the owner or operator of a facility when a release equal to or exceeding the reportable quantity of an extremely hazardous substance<sup>1</sup> or a CERCLA hazardous substance<sup>2</sup> occurs at the facility.**

**In such incidents, notifications are to be made to the following:**

- 1. Illinois Emergency Management Agency (IEMA)/State Emergency Response Commission (SERC) at 1-800-782-7860 (within state) or (217) 782-7860 (when calling from out-of-state);**
- 2. Local Emergency Planning Committee (LEPC) that is likely to be affected by the release. The LEPC telephone number(s) may be obtained from the IEMA Website at [http://www.state.il.us/iema/disaster/serc\\_tier2.htm](http://www.state.il.us/iema/disaster/serc_tier2.htm);**
- 3. National Response Center (NRC) at 1-800-424-8802 (if the substance is a CERCLA hazardous substance).**

**Please Note: Transportation-related incidents only require 9-1-1 notification.**

**B. Immediate telephone notification is also required if an incident or accident involving a hazardous material<sup>3</sup> occurs which results in:**

- 1) a member of the general public is killed;
- 2) a member of the general public receives injuries requiring hospitalization;
- 3) an authorized official of an emergency agency recommends an evacuation of an area by the general public;
- 4) a motor vehicle has overturned on a public highway;
- 5) Fire, breakage, release or suspected contamination occurs involving an etiologic agent;
- 6) Any release of petroleum (or oil) that produces a sheen on nearby surface water<sup>4</sup> and/or threatens navigable waters;
- 7) Any spill or overflow of petroleum that results in a release to the environment that exceeds 25 gallons.<sup>4</sup>

**In such incidents, notification shall be made as noted in Paragraph A, above, except no notification is required to the NRC, except items 6 and 7 (oil that impacts water and overfills emanating from underground storage tanks).**

**At a minimum, notification shall include:**

- 1) the chemical name or identity of any substance involved in the release;
- 2) an indication of whether the substance is an extremely hazardous substance;
- 3) an estimate of the quantity in pounds of any such substance that was released into the environment;
- 4) the time and duration of the release;
- 5) the specific location of the release;
- 6) the medium or media (air, land, water) into which the release occurred;
- 7) any known or anticipated acute or chronic health risks associated with the emergency and, where appropriate, advice regarding medical attention necessary for exposed individuals;
- 8) proper precautions to take as a result of the release, including evacuations;
- 9) the name and telephone number of the person or persons to be contacted for further information.

**WRITTEN FOLLOW-UP NOTICE IS REQUIRED WITH RESPECT TO INCIDENTS AS DESCRIBED IN PARAGRAPH A, ABOVE. As soon as practicable after such release (within 30 days), the owner or operator shall provide a written follow-up emergency notice (or notices, as more information becomes available) to the SERC and the LEPC, updating the information provided in the immediate notification and including additional information with respect to:**

- 1) Actions taken to respond to and contain the release;**
- 2) Any known or anticipated acute or chronic health risks associated with the release;**
- 3) Where appropriate, advice regarding medical attention necessary for exposed individuals.**

<sup>1</sup> See 40 CFR 355 for a listing of extremely hazardous substances (EHS)

<sup>2</sup> See 40 CFR 302.4 for a listing of Comprehensive Environmental Response, Compensation and Liability Act (CERCLA) hazardous substances

<sup>3</sup> See 49 CFR 172.101 for a list of hazardous materials

<sup>4</sup> See 41 IAC 176.340 Reporting and Cleanup of Spills and Overfills (USTs) OR 29 IAC 430 (ASTs)

**(These rules are compiled in 29 IAC 430 and 29 IAC 620)**

**Last Updated 5/2014**

