



**STANTON SALES**  
& SERVICE

---

Tube Turns  
Pipeline Closures  
Monolithic Insulated Joints  
Anchor Forgings



**SYPRIS**  
TECHNOLOGIES  
Tube Turns Division



Service Disabled Veteran Owned Small Business  
**SDVOSB**  
CVE





## Pipeline and Pressure Vessel Closures

- Tool-Less Locking Band
- Double Bolt Yoke Style
- Threaded Closures
- T-Bolt (Swing Bolt) Closures

## Faster, Easier Operation

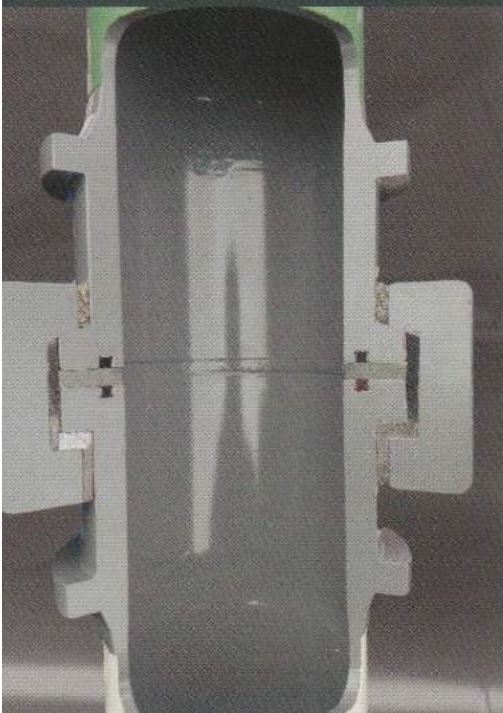
- Designed to pressure vessel code (ASME Sec VIII Div 1) and .50 DF
- Welding hubs of Dual and Triple Certified ASME grade and ASTM A694 materials
- Horizontal, Vertical, and Inclined Vessels

## Applications

- Pig Launchers/Receivers
- Filter Separators
- Strainers
- Meter Runs
- Other Pipeline Vessels

## Monolithic Insulated Joints

- Electrically isolate sections of pipeline to prevent corrosion caused by stray electrical currents
- Designed to meet pressure piping code (ASME B31.3, B31.4, B31.8) and ASME Sec VIII Div 1
- Custom manufactured to your specifications



**STANTON SALES**  
& SERVICE



**Service Disabled Veteran Owned Small Business**

- 📞 Office: 219-380-0074 Cell: 502-322-5917
- ✉ Robert@stantonsales.net, Nick@stantonsales.net
- 🔍 www.stantonsales.net
- 📍 2397 E Division Rd  
LaPorte, IN 46350

[linkedin.com/company/stanton-sales-and-service-llc](https://www.linkedin.com/company/stanton-sales-and-service-llc)