

Men's Fashion Polo Long Sleeve

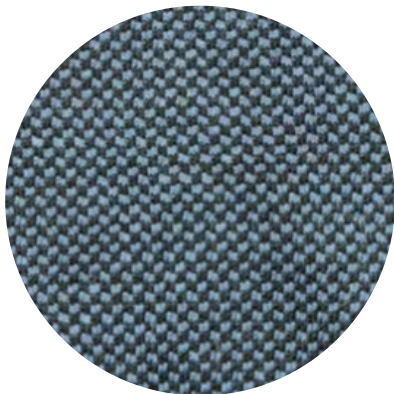


Polo collar, 3 buttons, one chest patch pocket on the right, Rib cuff, open flat bottom.

Size: S to 2XL

Material:

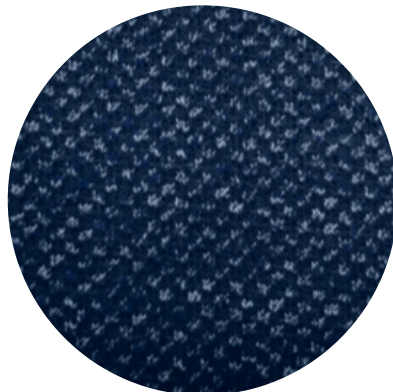
100% Polyester



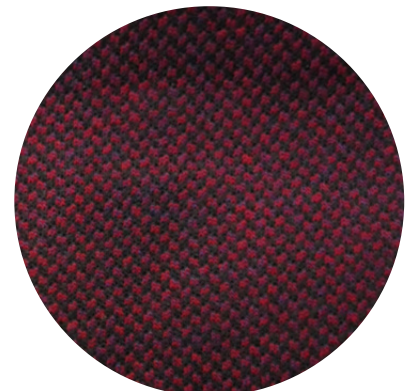
PLS-33601



PLS-33602



PLS-33603



PLS-33604

Men's Polo Shirt Long Sleeve

Men's Polo Shirt

Polo collar with one chest patch pocket on the right, shirts cuff, flat bottom.

Size: S to 2XL

Material:

60% Cotton,
40% Polyester



PLS-20603
Blue



PLS-20604
Red



PLS-20605
Navy



PLS-20606
Navy