



**Customer:** MJ Consulting  
**Customer Sample ID:** 25mg Full Spec #1  
**Laboratory Number:** 20C0008-01  
**Servings per Container:** 3.348



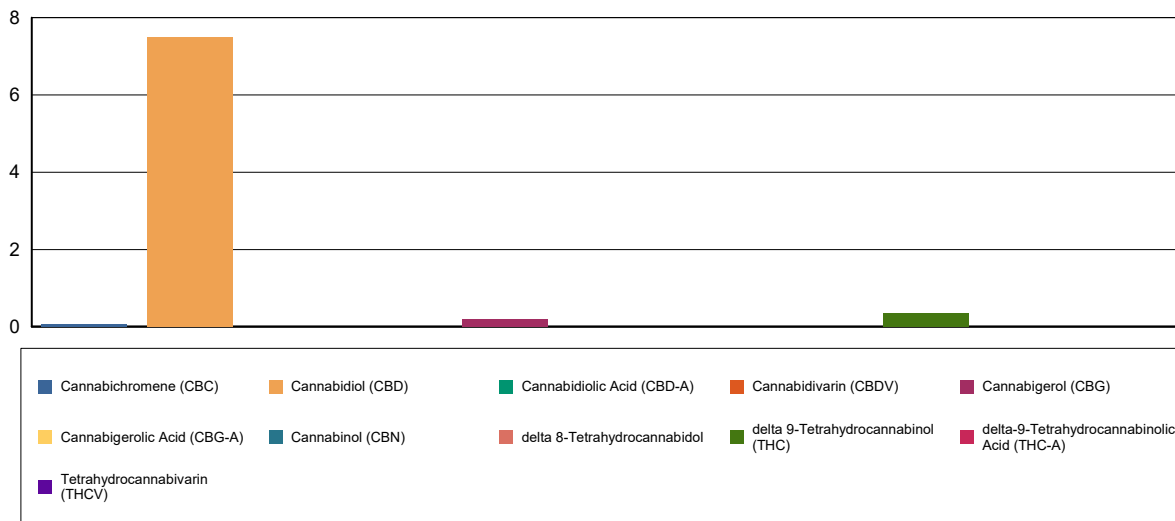
## Cannabinoid Profile

**Extraction Technician:** CB  
**Analytical Chemist:** MF

Extraction Date(s)	Analysis Date(s)
3/2/2020	3/2/2020

Cannabinoids (HPLC)		Results		
	LOD (mg/g)	%	mg/g	mg/Gummy
Cannabidiol (CBD)	<0.001			
Cannabidiolic Acid (CBD-A)		0.0001	0.00105	0.00351
Cannabigerolic Acid (CBG-A)	<0.001			
Cannabigerol (CBG)		0.02	0.207	0.692
Cannabidiol (CBD)		0.75	7.49	25.1
Tetrahydrocannabivarin (THCV)	<0.001			
Cannabinol (CBN)	<0.001			
delta 9-Tetrahydrocannabinol (THC)		0.03	0.340	1.14
delta 8-Tetrahydrocannabidol	<0.001			
Cannabichromene (CBC)		0.007	0.070	0.233
delta-9-Tetrahydrocannabinolic Acid (THC-A)		0.0008	0.00807	0.027
Cannabinoids Total		%	mg/g	
Max Active THC		0.03	0.35	
Max Active CBD		0.75	7.49	
T.Active Cannabinoids		0.81	8.11	
Total Cannabinoids		0.81	8.12	
Ratios				
21.55:1 CBD to THC		0.05:1 THC to CBD		

### Cannabinoid (mg/g)



Altitude Consulting, LLC utilizes NIST traceable Reference Standards and Certified Reference Material to calibrate analytical instruments along with proven analytical methods. The methods are applied in the most ethical manner following good laboratory practice guidelines. The results of this report are based solely on the sample submitted and cannot be reproduced.



**Customer:** MJ Consulting  
**Customer Sample ID:** 25mg Full Spec #2  
**Laboratory Number:** 20C0008-02  
**Servings per Container:** 3.614



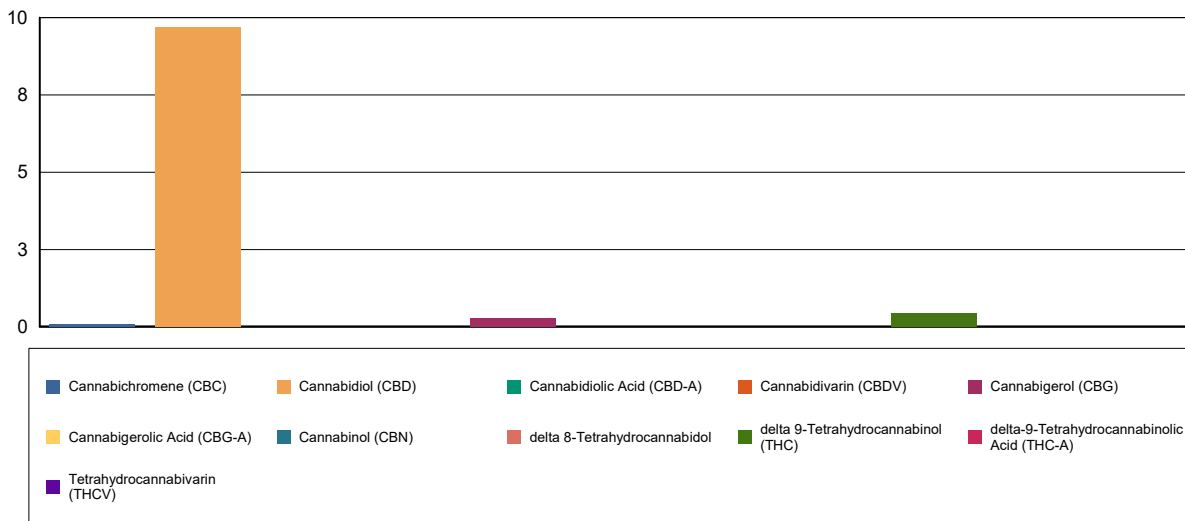
# Cannabinoid Profile

**Extraction Technician:** CB  
**Analytical Chemist:** MF

Extraction Date(s)	Analysis Date(s)
3/2/2020	3/2/2020

Cannabinoids (HPLC)		Results		
	LOD (mg/g)	%	mg/g	mg/Gummy
Cannabidiol (CBD)	<0.001			
Cannabidiolic Acid (CBD-A)		0.0001	0.0012	0.00433
Cannabigerolic Acid (CBG-A)	<0.001			
Cannabigerol (CBG)		0.03	0.271	0.980
Tetrahydrocannabivarin (THCV)	<0.001			
Cannabinol (CBN)	<0.001			
delta 9-Tetrahydrocannabinol (THC)		0.04	0.450	1.62
delta 8-Tetrahydrocannabinol	<0.001			
Cannabichromene (CBC)		0.009	0.092	0.332
delta-9-Tetrahydrocannabinolic Acid (THC-A)		0.0009	0.00888	0.032
<b>Cannabinoids Total</b>		<b>%</b>	<b>mg/g</b>	
Max Active THC		0.05	0.46	
Max Active CBD		0.97	9.70	
T.Active Cannabinoids		1.05	10.50	
Total Cannabinoids		1.05	10.50	
<b>Ratios</b>				
21.17:1 CBD to THC		0.05:1 THC to CBD		

## Cannabinoid (mg/g)



Altitude Consulting, LLC utilizes NIST traceable Reference Standards and Certified Reference Material to calibrate analytical instruments along with proven analytical methods. The methods are applied in the most ethical manner following good laboratory practice guidelines. The results of this report are based solely on the sample submitted and cannot be reproduced.