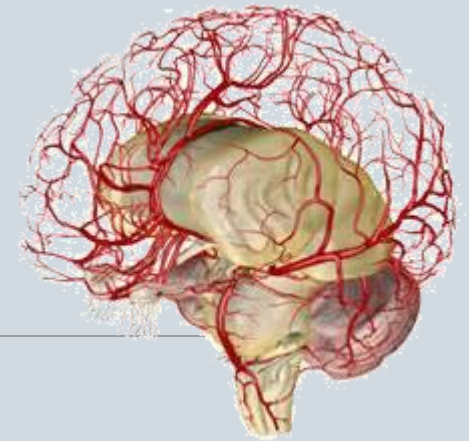


Quality Improvement

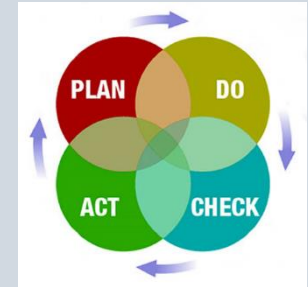
GEORGIA STROKE CURRICULUM



Objectives

- Recognize Stroke quality measures and the implementation of scientific, clinical Stroke evidence
- Understand the importance of clinical practice guidelines and how the guidelines determine Stroke patient care
- Understand the different levels of Stroke treatment centers
- Know the importance of Stroke Systems of Care (SSOC)
- Review the role of the Stroke Coordinator

Process Improvement



PDSA/A3 (PDCA)

Plan – Do – Study – Act

- Multicycle method to initiate new process or treatment
- Evaluate, adjust and repeat until goal is reached

Six Sigma

- Method and tool set used to analyze processes

LEAN

- Eliminate non-value-added processes or techniques

RCA Root Cause Analysis

- Retrospective analysis of adverse events

Know when to use each Quality Improvement method

Quality Improvement Basics

- Stroke quality measures are outcome measures
- Quality measures (indicators) apply to processes and aspects of stroke care
- Measures are supported by best scientific evidence and are action driven
- Each indicator/measure is analyzed and evaluated
 - **Who** is responsible for each aspect of the patient's care?
 - **What** information does the data tell us?
 - **Where** does the information originate?
 - **How** is care coordinated based on the data?



Outcomes & Quality Improvement

- Stroke patient pre-hospital and hospital stay is entered in stroke registry to track outcomes
- Data collection and analysis evaluates the Stroke program performance
- Data **benchmarked** to drive performance improvement

Key to Stroke Program success is data collection, analysis and improvement implementation strategies

Clinical Practice Guidelines (CPGs)

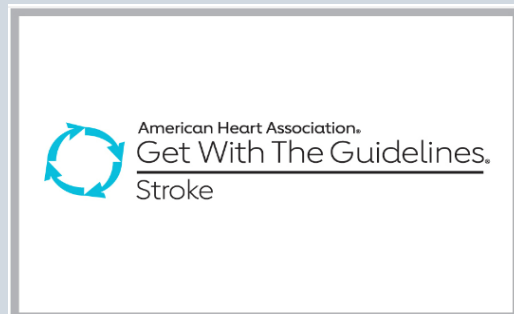
- Recommendations for population-based patient care guided by best available research evidence and practice experience
- Stroke care quality protocols are based on expert consensus guidelines
- All certified Stroke Programs are required to enter Stroke data into a valid Stroke registry
- Most certified Stroke Centers employ Get With The Guidelines[®]-Stroke (GWTG-Stroke) which imbeds the best research and science (Guidelines) into the data registry

Stroke Performance Measures

- Stroke performance measures are based on the Clinical Practice Guidelines
- Measures are based on the organizations Stroke Center specific national certification or State of GA designation
- For example, Stroke Measures include:
 - VTE prophylaxis
 - Dysphagia Screen
 - Door To Needle for lytic
 - Door To Device for mechanical reperfusion therapy

Get With The Guidelines® Stroke

- Product of American Heart Association
- Robust and comprehensive registry and database
- Best scientific Stroke research is imbedded into GWTG-S
- **Improves stroke care by promoting consistent adherence to the latest scientific treatment guidelines**



Get With The Guidelines[®] Stroke

- Implementing the best scientific Stroke care for patients, hospitals can obtain GWTG[®]-Stroke awards
- Awards are evidence that patients received Stroke care that has been researched as best evidence
- Sharing Stroke quality data with the staff and providers help them to understand the “why” for implementing best practices
- GWTG-Stroke awards include
 - Achievement Measures
 - Quality Measures
 - Target: Stroke
 - Target: Type 2 Diabetes



Stroke Center Certification

Comprehensive Stroke Center

(DNV, TJC, HFAP)

Neurosurgery and Neuroendovascular 24/7, Neuro ICU, all PSC functions plus full spectrum of hemorrhagic stroke and ischemic stroke care

Thrombectomy-Capable Stroke Centers

(TJC, DNV (Primary Plus), HFAP)

Ability to perform mechanical thrombectomy 24/7, dedicated ICU, closely aligned CSC expectations, no full spectrum for hemorrhagic stroke required

Primary Stroke Center

(DNV, TJC, HFAP)

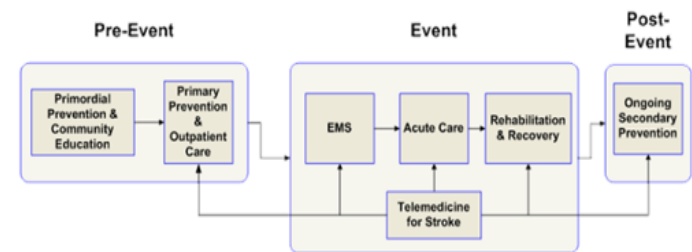
Stroke Coordinator, Stroke Services,
Continuum of inpatient care, Data collection

Acute Stroke Ready Hospital (DNV, TJC, HFAP) and/or GA Remote Treatment Stroke Center (GA State designation)

IV Alteplase, CT scanner, +/- Tele-Stroke Support

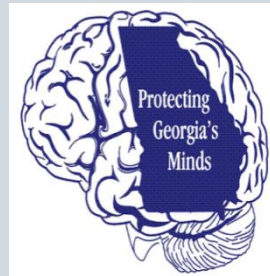
Stroke Systems of Care

- Collaborate with EMS, local government and agencies to ensure the most effective care
- Share best practices to large geographical areas
- Present data for processes related to stroke care
- Facilitate enrollment in stroke clinical trials
- Review protocols and CPGs annually
- Network for community outreach



Georgia Coverdell Acute Stroke Registry

- Named in honor for the late Senator Paul Coverdell, of Georgia, who died of a massive Stroke in 2000, the primary goal of the Georgia Coverdell Acute Stroke Registry (GCASR) program is to improve the care of acute Stroke patients in the hospital and pre-hospital settings
- The program is funded by the Centers for Disease Control Paul S. Coverdell National Acute Stroke Registry cooperative agreement and was established in 2001 as a prototype project implemented by the Emory School of Medicine
- Full implementation and incorporation into the State's Department of Public Health (DPH) began in 2005



Georgia Coverdell Murphy Act

- Signed into law May 14, 2008
- Establishment of protocols related to the assessment, treatment and transport of Stroke patients by licensed EMS providers
- Distribution of state identified Stroke Centers on the EMS website

<https://dph.georgia.gov/locations/state-office-ems-and-trauma>



Stroke Coordinator

Roles and Responsibilities

- Regulatory preparation: ASRH, PSC, TSC, CSC
- Know the strengths and weakness
 - Mock drills, stroke alerts, daily rounds
- Manage data “inspect what you expect”
- PDCA – recheck, recheck, recheck
- Patient and family experience
- Prioritize PI projects
- Celebrate wins!

Educator
(Continuum of Care)

Outreach
(Community/EMS)

**Networking &
Collaboration**
(GA-SPA)

**Professional
Development**
(SCRN/CNRN)

Research

**Policy &
Procedures**

**Quality
Improvement**
(Concurrent RCA)

**Data
Abstractor
Analysis**
(AHA/ASA GWTG)



Mission Statement

The Georgia Stroke Professional Alliance is Committed to Stroke Prevention and Optimizing Stroke Care through Professional Networking and Education

- Began with 7 Atlanta stroke coordinators in 2007
- Founded in 2009
- Unique, voluntary grass-roots organization
- Opportunity to present at International Stroke Conferences (ISC)
- Members include hospitals, EMS, Neurologists, physicians independent consultants, rehab, pharmaceutical/medical device industries, stakeholders from the AHA/ASA, DPH, Coverdell
- Resource for best practice and mentoring to implement best practices
- Visit: <http://georgiastrokeprofl.org>
- For membership contact Denise.goings@atriumhealth.org

Thank you – Questions?



Resources

www.stroke.org

www.findhelp.org

www.activase.com

<http://dph.Georgia.gov/Georgia-Coverdelle-acute-stroke-registry>

<https://dph.Georgia.gov/Georgia-diabetes-prevention-and-control-program>

<https://dph.Georgia.gov/chronic-disease-prevention/heart-disease/high-blood-pressure-control>

[Get With The Guidelines® - Stroke | American Heart Association](#)

[DNV Healthcare Stroke Care Certification Program – DNV](#)

[Stroke Certification | The Joint Commission](#)

[HFAP StrokeCertBro.pdf](#)

[About the SCRN Credential | ABNN Certification](#)

Resources

Comprehensive Review for Stroke Nursing, Second Edition. (2020). In S. L. Kiffon Keigher. American Association of Neuroscience Nurses.

Nasser Razack, M. J. (2018). Stroke Made simple. Razack Intellectual Properties, LLC.

Stroke Certification Study Guide for Nurses. (2017). In K. Morrison. Springer .

2022 Guideline for the Management of Patients With Spontaneous Intracerebral Hemorrhage: A Guideline From the American Heart Association/American Stroke Association
<https://doi.org/10.1161/STR.0000000000000407>

Guidelines for the Early Management of Patients With Acute Ischemic Stroke: 2019 Update to the 2018 Guidelines for the Early Management of Acute Ischemic Stroke: A Guideline for Healthcare Professionals From the American Heart Association/American Stroke Association
<https://doi.org/10.1161/STR.0000000000000211>

Care of the Patient With Acute Ischemic Stroke (Prehospital and Acute Phase of Care): Update to the 2009 Comprehensive Nursing Care Scientific Statement: A Scientific Statement From the American Heart Association <https://doi.org/10.1161/STR.0000000000000356>