

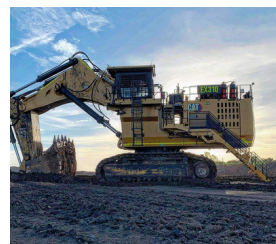
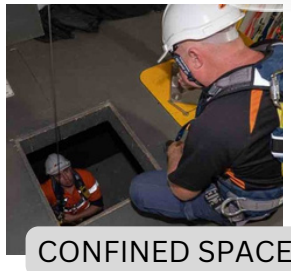


[www.a1advancedtraining.com.au](http://www.a1advancedtraining.com.au)

## Mobile Trainers & Assessors

**NOTICE:**

**Mining Plant & Machinery Owners/Operators**



### DID YOU KNOW ?

That since 1st January 2012 there has been a national ticketing system for accredited plant & machinery operators called RIIMPO (Resources, Infrastructure, Industries.. i.e., Mining, Civil, Agriculture, Trucking & Warehousing. This replaces the O.H.S competencies.

These tickets are not issued by Workplace Health & Safety  
BUT by Accredited RTO's  
(Registered Training Organisations)

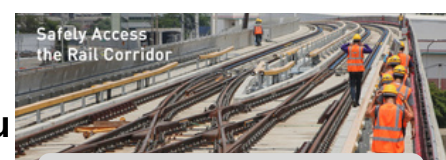
Our Trainers have High-Risk industry experience and have been in these fields since 2000.

➤ To book training contact:



**STANDARD 11**

Our Head Trainer Scott direct on  
**0439663870** or  
[admin@a1advancedtraining.com.au](mailto:admin@a1advancedtraining.com.au)



**RAIL CORRIDOR ACCESS**

# NATIONALLY RECOGNISED COURSES

RIIMPO306D - Operate plant/machinery on live stockpiles

RIIMPO308F - Conduct tracked dozer operations

RIIMPOS0SF Conduct Wheeled Dozer

RIIMPO225E Conduct Skid Steer Loader Operations without attachments

RIIMPO336E Conduct Bell Dump Truck Operations

RIIMPO337E Conduct Articulated Truck Operations

RIIMPO338E Conduct Rigid Haul Truck Operations

RIIPRO301D Conduct crushing and screening plant operations

RIISAM205E Cut, weld and bend materials

RIISAM212E Service mine plant and equipment

RIIVEH201E Operate Light Vehicle

RIIVEH202F Operate a Medium Vehicle

RIIVEH302E - Operate multi-combination vehicle

RIIVEH303F - Drive heavy combination vehicle

RIIVEH304E - Conduct tip truck operations

RIIVEH305E Operate and Maintain Four Wheel Drive Vehicles

RIIVEH306E Operate Mine Service Vehicle

RIIVEH307F Operate a Heavy Rigid Vehicle

RIIWHS202E - Enter and work in confined spaces

RIIWHS204E - Work safely at heights

RIIWHS205E - Control traffic with stop-slow bat

RIIWHS206 - Control traffic with portable traffic

Control devices and temporary traffic signs

RIIWHS207 - Control traffic on high volume roads

RIISS00034 Surface Coal Mine Safety Skill Set (Standard 11)

S1,S2,S3 Mine Site Supervisor

G2 Risk Facilitator

AHC BIO201 Inspect and clean machinery for plant, animal, and soil material

AC DC Chemical Control-Qld Licensing

AHCMOM216 Operate side by side utility vehicles

AHCMOM217 Operate quad bikes

AHCMOM213 Operate and Maintain Chainsaws (Level 1)

AHPCPM205 Fell Small Trees (Level 2)

FWPCOT3350 - Fell trees manually (intermediate)

FWPCOT3301 Operate a pole saw

RIIMPO310F Conduct Grader Operations

REMPOHJE Conduct Scraper Operations

RIIMPO334E Conduct skid steer Loader operations using attachments

RIIHAN201E Operate a Forklift

RIIHAN203E Conduct Lifting Operations

RIIHAN208E Perform Digging

RIIHAN210D Perform Intermediate Rigging Operations

RIIHAN301E Operate Elevating Work Platform

RIIHAN304E Conduct Slewing Crane Operations

RIIHAN305D Operate a Gantry or Overhead Crane

RIIHAN307E Operate a Vehicle Loading Crane

RIIHAN311F Conduct Operations with Integrated Tool Carrier

MSMPER200 Work in accordance with an issued permit

MSMWHS216 Breathing apparatus

MSMWHS217 Gast test atmospheres

TLIF0020 - Safely access the rail corridor

RIIMPO205E Operate Roller/Compactor

RIIMPO206D Conduct Bulk Water Truck Operations

RIMPO208F Operate Support Equipment

RIIMPO301E Conduct hydraulic excavator operations

RIIMPO302E Conduct Hydraulic Shovel Operations.

RIIMPO304E Conduct Wheel Loader Operations

RIIMPO305F

CPCWHS1001 Prepare to work safely in the construction industry (white card)

HLTAID009 Provide Cardiopulmonary Resuscitation

HLTAID011 Provide First Aid

HLTAID012 Provide an emergency first aid response in an education & care setting

RIIHAN308F Load and unload plant

RIIHAN309F Conduct Telescopic Materials Handler Operations RIIHAN311F-Conduct Operations with Integrated Tool Carrier

RIIMPO206D Conduct Bulk Water Truck Operations

RIIMPO315E Conduct Tractor Operations

RIIMPO316E Conduct Self-propelled Compactor Operations

RIIMPO317F Conduct Roller Operations

RIIMPO318F Conduct Civil Construction Skid Steer Loader Operations

RIIMPO319E Conduct Backhoe/Loader Operations

RIIMPO320F Conduct Civil Construction Excavator Operations

RIIMPO321F Conduct Civil Construction Wheeled Front End Loader Operations