

Quilted Project Bag

Pattern for Bag in Two Sizes

Small (12" X 7" X 4.5")

Large (14" X 8" X 4.5")



Anne Hurlburt
Scandia Quilt Studio
14160 236th St. N.
Scandia, MN 55073
651 433-1485 (home) or 612 202-8325 (cell)
www.scandiaquiltstudio.com
anne@scandiaquiltstudio.com

Quilted Project Bag

Fabric Requirements/ Cutting Instructions

Fat quarter friendly— three fat quarters (18" X 22") may be used for this project. One fat quarter for the outer fabric, one fat quarter for the lining, plus one more for the optional pocket and the handle and the zipper tab will make a bag in either size.

Small Bag (12" wide by 7" high by 4.5" deep)

| | |
|--------------------|---|
| Bag Body (Quilted) | (1) 13" X 18" (non-directional fabric) OR (1) 13" X 19" cut in half to make (2) 13" X 9.5" rectangles (directional fabric) |
| Lining | (2) 13" X 9.5" rectangles |
| Pocket (Optional) | (1) 11" X 13" rectangle |
| Handle | (1) 2.5" X 12" rectangle |
| Zipper Tab | (1) 2.5" X 3" rectangle |

Large Bag (14" wide by 8" high by 4.5" deep)

| | |
|--------------------|--|
| Bag Body (Quilted) | (1) 15" X 21" (non-directional fabric) OR (1) 15" X 22" cut in half to make (2) 15" X 11" rectangles (directional fabric) |
| Lining | (2) 15" X 11" rectangles |
| Pocket (Optional) | (1) 15" X 11" rectangle |
| Handle | (1) 2.5" X 12" rectangle |
| Zipper Tab | (1) 2.5" X 3" rectangle |

Other Supplies, both sizes:

| | |
|---------------------|---|
| Zipper | 18" or longer nylon purse zipper (YLI) |
| Interfacing or Foam | If not using pre-quilted fabric for outer fabric. Cut same size as bag body fabric. |

General Instructions

- Use half-inch (0.5") seam allowance throughout unless otherwise specified
- If not using pre-quilted fabric for bag body, apply interfacing or foam (such as Soft and Stable) to outer bag fabric before beginning. Or layer with batting and a backing and quilt as desired.
- Using a heavier fabric (such as canvas) for the bag body may eliminate the need for interfacing or quilting.
- Coordinate your thread color with fabrics. I like to match the fabric color if possible.
- The walking foot and/or zipper foot for your sewing machine will be helpful.

Sewing Instructions

1. Seam Bag Body (if using directional fabric)

To ensure that the patterned fabric is right-side up in the finished bag, seam the two pieces of the body at the bottom using a half-inch seam.

This will make sure your directional fabrics are right-side up on the finished bag.



2. Prepare Handle

- a) Press the handle fabric in half, lengthwise.
- b) Open the fold and press the two long edges to the center fold.
- c) Press in half again, encasing the raw edges in the middle. Topstitch close to both edges.
- d) Fold the handle in half, matching the raw edges. Baste stitch across the raw edges to secure. Your handle should look like this.



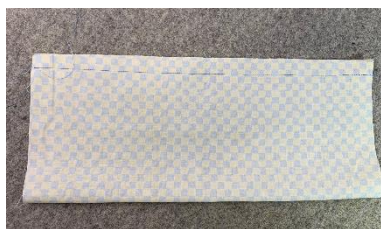
3. Prepare Zipper Tab

- a) Fold and press the short sides of the zipper tab to the wrong side, using a half inch seam allowance. Fold again with the raw edges together and press.
- b) Cut off the zipper stop. Do not open the zipper until the tab is in place!
- c) Insert the cut end of the zipper half-way into the folded tab, using the pressed end as a guide, and fold the raw edges to meet in the middle (over the plastic zipper coil.) Adjust to encase all the raw edges and pin. The folds should be even on the front and back of the tab.
- d) Topstitch the top fold, then the other three sides, and then again across the top. If you would like to top-stitch an "X" through the tab, that is optional. My finished tab looks like this.

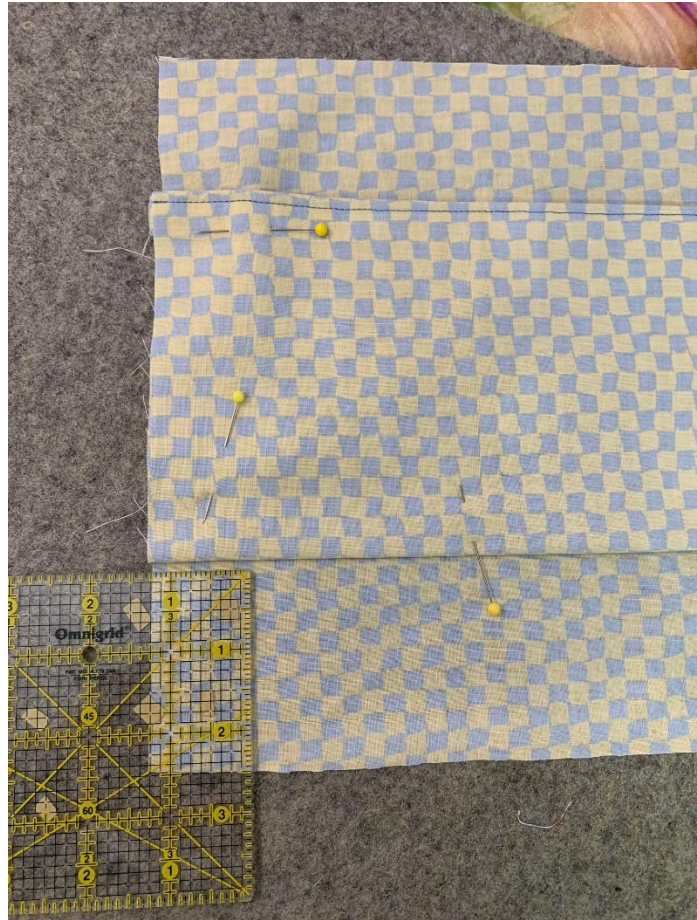
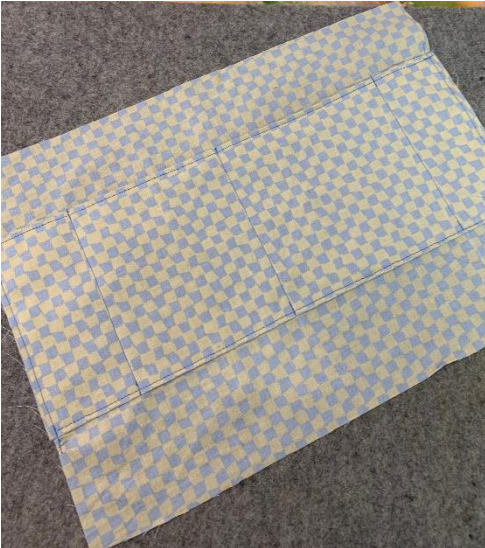


4. Prepare Pocket (Optional)

- a) Fold the pocket piece wrong sides together and seam.
- b) Turn this "tube" so the raw edges are inside. Press, and topstitch the seamed long edge close to the fold.

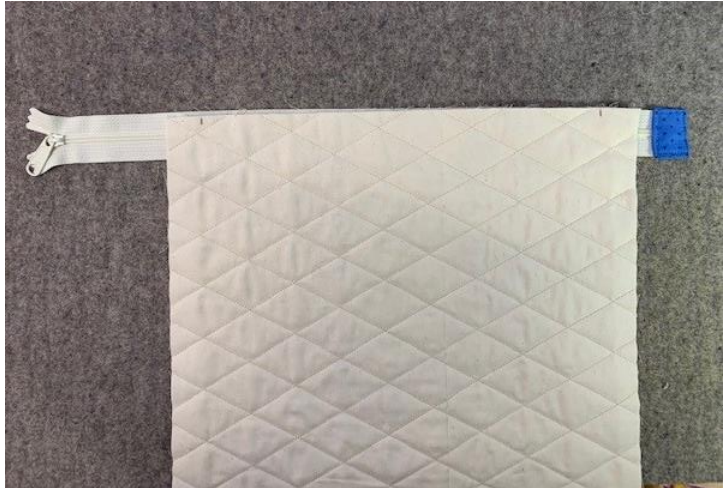


- c) Position the pocket on one of the lining pieces, with the folded edge about 2.5 inches from the bottom of the lining. (The top-stitched edge is the top of your pocket.) Pin in place.
- d) Stitch the sides of the pocket to the lining near the raw edges, and along the bottom folded edge of the pocket, through all layers. Add some “dividers” to your pocket by marking and stitching several vertical lines. Sections of 4 or 5 inches make good spaces for small items, spaces of 1 or 2 inches are good for pens and other slender items.



5. Baste Zipper to Bag Body

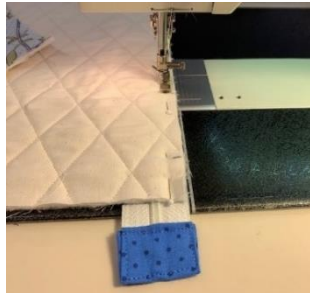
- a) Place the closed zipper right side up, with the tab to the right. Lay the bag body on top, right side on the zipper. Align the raw edge of the bag body with the edge of the zipper tape. Leave a half-inch gap between the right side raw edge and the zipper tab.



- b) Make a mark on the bag body one inch from each side of the body.



- c) Using a zipper foot, baste the body to the zipper between the marks.



- d) Fold up the other side of the bag and repeat.



- e) Open the zipper. On the open end, turn the zipper tape into the seam allowance with the zipper coil outside of the half-inch seam allowance on the side of the bag. Pin, then add a few basting stitches. Do this on both sides of the zipper.



6. Stitch Linings in Place Over Zipper

- a) Place the lining piece right sides together with the body, lining up the raw edges on the sides and with the edge of the zipper tape, with the zipper between the bag and lining pieces. If your lining piece has a pocket, make sure the opening of the pocket is facing up, towards the zipper. The ends of the zipper tape will extend out of the seam allowance.
- b) With the zipper foot, Stitch through all layers (body, zipper & lining) starting at the raw edge of the body on the open end to the one-inch mark next to the zipper tab. Repeat for the other lining piece.
- c) Snip off the excess zipper tape. Also trim off any of the extra zipper teeth in the seam allowance to reduce bulk.

- d) Open the seams on either side of the zipper. Gently press, taking care to not apply too much heat to the nylon zipper.



7. Baste Handle in Place

Pin, then baste the handle to the right side of the bag body about a half-inch below the open end of the zipper.



8. Seam Body and Lining

- a) Match the raw edges of the lining and the raw edges of the bag body. Pin all around eave an opening 3 to 4 inches wide for turning in the bottom of the lining.
- b) Tuck the zipper tab inside to keep it away from stitching.
- c) Stitch all the way round with a half-inch seam, breaking the stitching at the zipper tab between the raw edges of the lining and the body.



9. Box Corners

- a) Mark a $1\frac{3}{4}$ " square on all four corners of the bag body and the lining. Measure the square inside the seam allowances. In the photo to the right, the bag body is made in one piece, with no seam, so the height of the square is measured from the bottom fold.
- b) Using your scissors, cut out the corners.



- c) Fold each corner so that raw edges meet. On the lining (and the body if there is a seam at the bottom) nest the seams to reduce bulk. Pin and stitch across. Your bag will look like this:



10. Finishing

- a) Turn bag right side out through the opening in the lining. Smooth the lining into the bag.



- b) Smooth the lining and body away from the zipper. Press and add a few pins to keep layers from shifting and topstitch all the way around. If you begin under the zipper tab the stop and start will be less visible.
- c) Close the opening in the lining, either by hand stitching or by machine. To finish by machine, pin the folded edges of the opening together and stitch close to the edge.



Enjoy your bag! These basic instructions can be used to make bags in different sizes. Customize by adding pockets inside or outside. Change the depth and height by using a larger or smaller square to cut the boxed bottom. Make the outer bag from a pieced quilt block. Make it your own!



Copyright 2021, Anne Hurlburt
Scandia Quilt Studio
14160 236th St. N.
Scandia, MN 55073
651 433-1485 (home) or 612 202-8325 (cell)
www.scandiaquiltstudio.com anne@scandiaquiltstudio.com