

KNEER · SÜD
FENSTER

Lived Vision



D Lift and slide **oors**

Aluminium-wood / wood
Innovations



An overview of our lift and slide doors and new developments

**KNEER · SÜD
FENSTER**

Lived Vision

Today's market demands for larger glass surfaces and increased comfortable living standards need to be satisfied and, in order to fulfill this requirement, we have updated the lift and slide door programme. Alongside the Sky-Plus variant, where the glass surface has been extended to a maximum area, a great deal of smaller design details have been amended. This reworking has created, for example, a reduced sash appearance, new sealing strips and guide rails are now standard features. Furthermore, all the aluminium-wood and wood systems will be now generally equipped with the "Eco-Pass" threshold.



The large opening widths from the lift and slide doors create the space for a beautiful, bright home.

Lift and slide doors from Kneer-Südfenster can be supplemented and/or ordered with a large range of design variations and increased user-comfort.

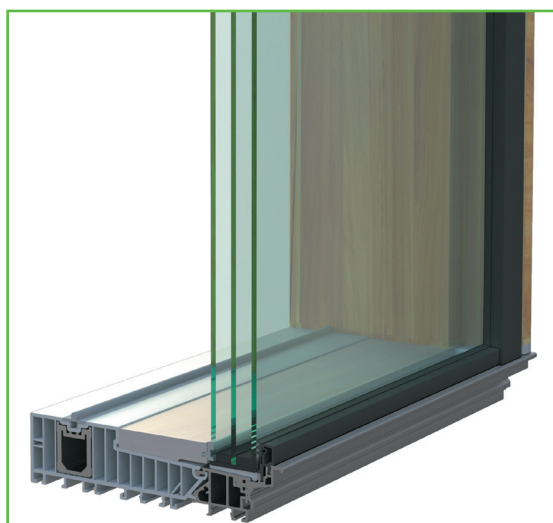
- Simplified operation
- Combinable with the soft-close damper system for soft sliding into the locking elements
- Smooth sliding movement with the HS400 COMPACT carriage
- High basic security as standard
- Gradual increases up to resistance class RC2, according to EN1627-1630
- Concealed locking technology by utilising a hookbolt gear
- Excellent energy efficiency and accessibility
- Maximised incidence of light with the ECO PASS floor threshold and the ECO PASS Sky solutions
- Motorised operation and electronic lock monitoring are also possible

1) Lift and slide door system: Sky-Plus

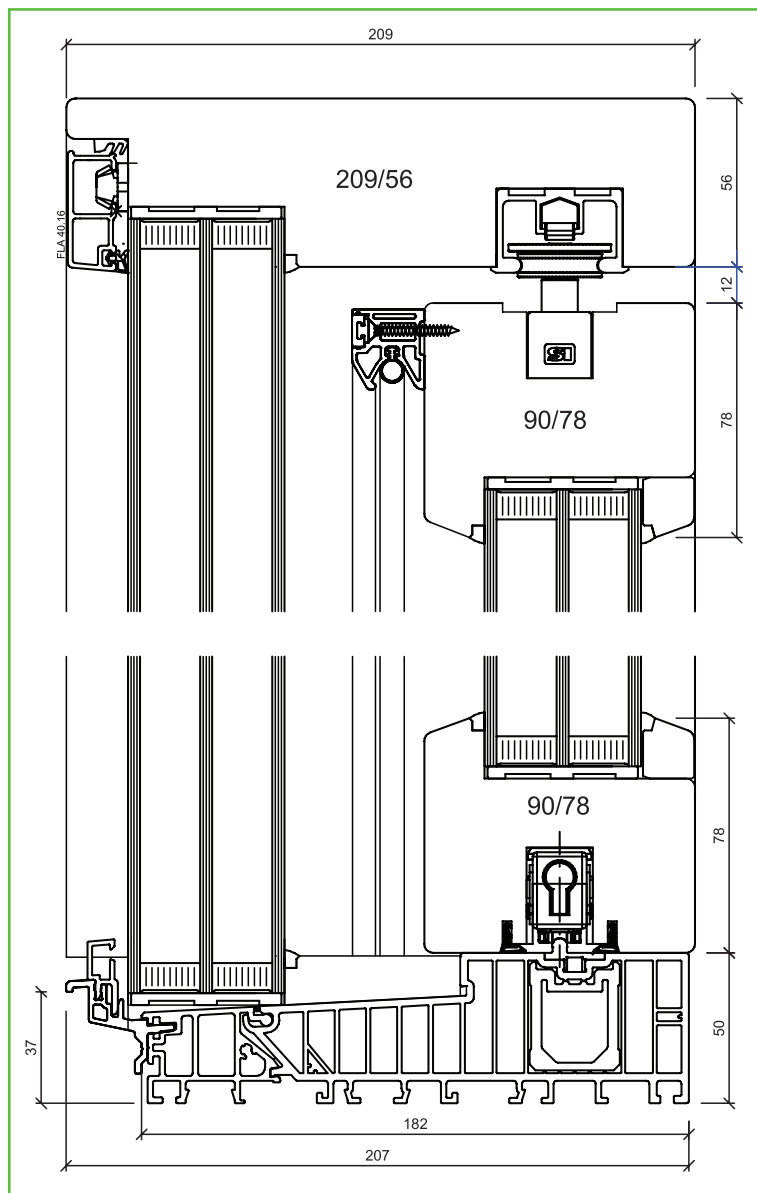
The Sky-Plus variant impresses with a maximum glass surface and absolutely narrow sash appearance. The glass panel is hereby inserted in the threshold at the bottom as well as at the top and sides in the frames. This therefore creates the possibility for glass panel thicknesses of up to 52 mm. This also fulfills all the requirements for specialised glass. The system is delivered exclusively as barrier-free with flat running rail and tread plate. A soft-close damper and an exposed drive unit can be ordered as optional extras. This therefore creates a lift and slide door with maximum visibility levels and the highest possible comfort standards.

Systems:

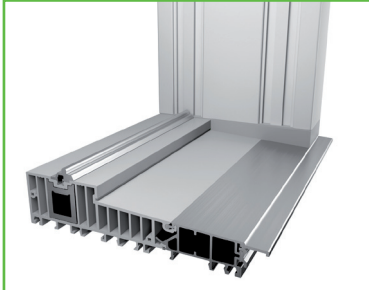
- Aluminium-Wood HST 115 Sky-Plus
- Wood HST 90 Sky-Plus



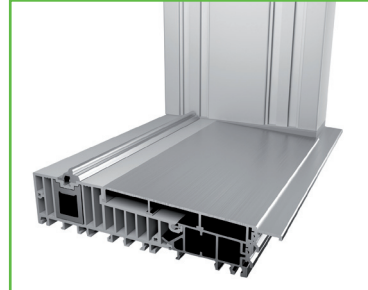
Glazing in the threshold



2) Threshold solutions



Standard floor threshold



Barrier-free floor threshold



The new floor threshold variants provide excellent transparency and comfort levels.

Your benefits:

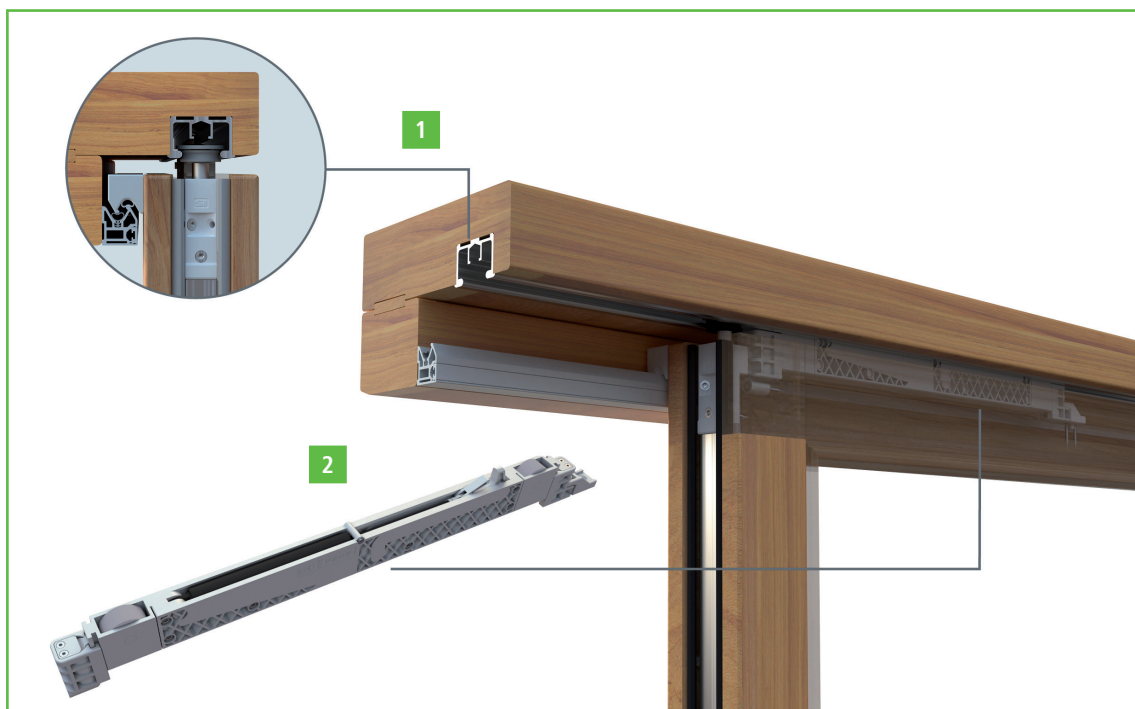
- Increased incidence of light through the larger glass surface
- Optimum thermal insulation by implementing a 10 chamber construction in the floor threshold
- Improved U-Values by utilising small profiles and larger glass proportions
- Barrier-free entrance without compromising the tightness

3) Soft-Close Elements

The soft-close elements consist of the standard implemented guide rail and the damper which is concealed in the guide rail as an optional extra. The new guide rail creates a completely new sliding feel with its maximised ease of movement. The damper slows down heavy door sashes just before the end position and then eases them smoothly into the locking position. This protects against the risk of injuries and preserves the sliding element as well as preventing constructional damage.

Systems:

- Aluminium-Wood HST 95 / 115 / 115 Sky-Plus
- Wood HST 68 / 82 Effizient / 82 / 90 / 90 Sky-Plus



- 1) Soft-Close guide rail
- 2) Fully concealed Soft-Close damper; creates a highlight for elegant design requirements

Your benefits:

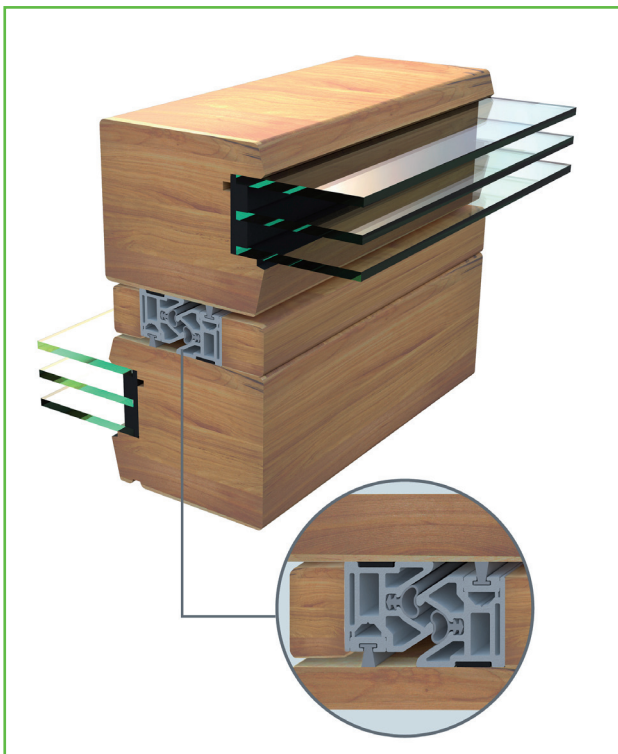
- A completely new sliding feel with maximum ease of movement
- Simplified and intuitive operation
- Prevents damages from improper operation when closing or opening the lift and slide sash
- Considerably reduces the risk of injuries (risk of crushing)
- Increased design standard through concealment of mechanism

4) New sealing concept

A new sealing system has been integrated to achieve increased tightness and a continuous level of comfort. This comprises a v-shaped sealing strip which is attached to the rear edge as well as new silicon sash seals which ensure tightness at the bottom and front. The synthetic sealing strip is designed with multiple chambers and therefore optimises the thermal separation between the internal and external climatic conditions.

Systems:

- Aluminium-Wood HST 115 / 115 Sky-Plus
- Wood HST 68 / 82 Effizient / 82 / 90 / 90 Sky-Plus



Your benefits:

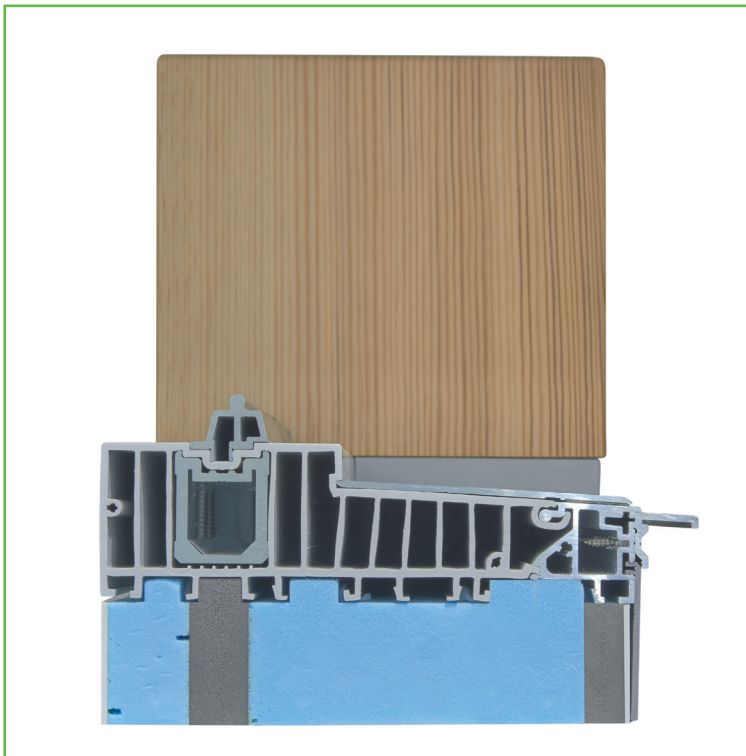
- Optimised thermal separation by utilising synthetic vertical and horizontal, multiple chamber, sealing strips
- No condensate formation
- High wind and driving rain tightness
- Invisible screw fittings

5) Thermally insulated enlargements

The "Eco-Pass" floor threshold provides excellent thermal insulation values. This therefore considerably reduces the risk of condensation water build up. In order to achieve optimum values in other base areas, high thermal insulation enlargements have been implemented. These components are perfectly designed for the pressure loads which are created by higher weights as well as also being conceived for the requirements of thermal protection and tightness. The perfectly fitting base elements can be supplied in building heights from 40 - 320 mm.

Systems:

- Aluminium-Wood HST 95 / 115 / 115 Sky-Plus
- Wood HST 68 / 82 Effizient / 82 / 90 / 90 Sky-Plus



Your benefits:

- Increased stability for the floor threshold by utilising perfectly fitting aluminium reinforcing elements
- Increased stability for the corner areas with functional frame-corner connections
- High insulating floor threshold provides thermal insulation which exceeds the requirements stated in the Energy Saving Regulation
- The risk of condensation is considerably reduced
- Perfectly fitting base profile available in various heights for perfect floor recess

6) Carriage

More incidence of light due to smaller profiles, increased ease of movement with the sash weight distributed on eight carriage rollers and improved energy efficiency supplement this new carriage system. A real time-saver when installing lift and slide doors is provided by the height adjustable carriage for sash weights up to 300 kg.

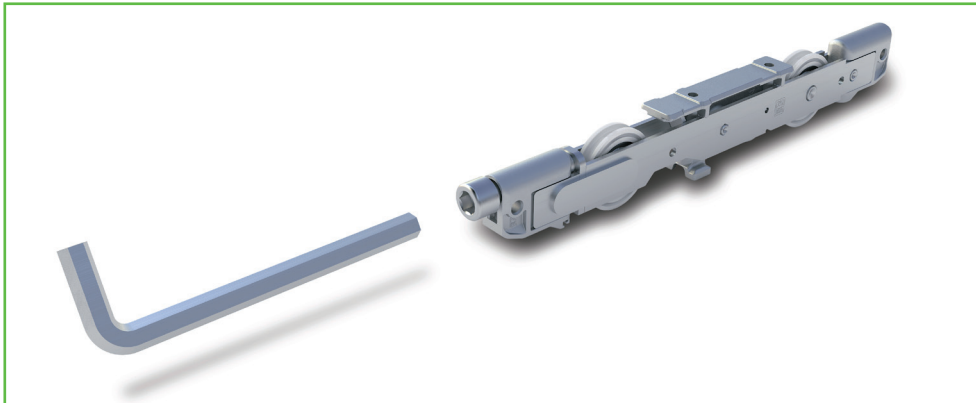
Systems:

- Aluminium-Wood HST 115 / 115 Sky-Plus
- Wood HST 90 Sky-Plus



Systems:

- Aluminium-Wood HST 95
- Wood HST 68 / 82 Effizient / 82 / 90



Your benefits:

- Smooth and easy sliding movement with optimum load distribution on 8 rollers
- Less load on each roller reduces wear on the carriage rollers
- Increased incidence of light due to the large glass surface
- Improved U-Values with smaller profiles and increased glass proportions
- Smooth and easy sliding movement by utilising optimised adjustment possibilities
- Professional adjustment on site

KNEER - SÜD FENSTER

Lived Vision

KNEER GmbH

Fenster und Türen
Horst-Kneer-Straße 1
72589 Westerheim
Telefon 07333 / 83-0
Telefax 07333 / 83-40
E-Mail: info@kneer.de

SÜD-FENSTERWERK

GmbH & Co. Betriebs-KG
Rothenburger Straße 39
91625 Schnelldorf
Telefon 07950 / 81-0
Telefax 07950 / 81-253
E-Mail: info@suedfenster.de

SÜD-BAUELEMENTE GmbH

Ludwig-Erhard-Straße 4
03238 Massen
Telefon 03531 / 7991-14
Telefax 03531 / 5011-51
E-Mail: info@suedfenster.de

www.kneer-suedfenster.de

