

KNEER · SÜD
FENSTER

Lived Vision



ENTRANCE DOORS
PRIME MODELS

2025

ALUMINIUM-WOOD

PRIME MODELS 2025

Sophisticated entrance doors

The decisive factor for your well-considered purchase decision is certainly the appearance.

The spark must jump over. Whether modern, classic, purist or charming - the front door must suit you and the style of your house. Aluminium-wood front doors from KNEER-SÜDFENSTER are not only beautiful to look at and inviting, but also convince through inner values such as a robust construction, high security and good thermal insulation.

An innovative, technically mature entrance door fulfills its tasks for many years and looks very good at the same time!

ENTRANCE DOORS
CATEGORY PREMIUM⁺

FROM PAGE 6

ENTRANCE DOORS
CATEGORY PREMIUM

FROM PAGE 12

ENTRANCE DOORS
CATEGORY BASIC⁺

FROM PAGE 20

ENTRANCE DOORS
CATEGORY BASIC

PAGE 23



Welcome to Kneer-Südfenster

For 90 years the family business KNEER-SÜDFENSTER has been producing high-quality building elements for demanding clients from aluminum-wood, wood, aluminum, aluminum-plastic and plastic.

Around 800 employees manufacture windows, lift-and-slide doors, mullion-transom facades and entrance doors according to the latest findings in the highest quality for customers all over the world.



MODEL OVERVIEW	4
ENTRANCE DOORS MODELS	6
ALUMINIUM COLOURS PG 1	24
WOOD TYPES & COLOURS	25
GLAZING	26
STAINLESS STEEL EQUIPMENT	27
BLACK EQUIPMENT	28
SPECIAL EQUIPMENT	30
FINGERPRINT	31
SAFETY TECHNOLOGY	32
TECHNICAL DATA	34
ALSO AVAILABLE	38

MODEL OVERVIEW



HTA 25-215

> page 6



HTA 25-220

> page 8



HTA 25-226

> page 10



HTA 25-201

> page 14



HTA 25-219

> page 16



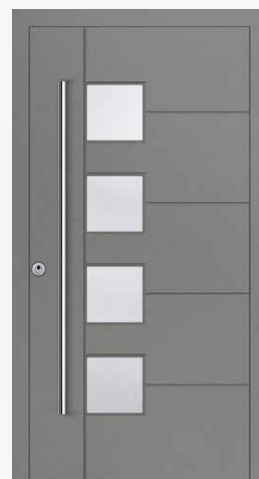
HTA 25-213

> page 18



HTA 25-203

> page 18



HTA 25-218

> page 18



HTA 25-706

> page 22



HTA 25-707

> page 22



HTA 25-709

> page 22



HTA 25-710

> page 22



HTA 25-207
 > page 15



HTA 25-206
 > page 16



HTA 25-216
 > page 16



HTA 25-205
 > page 16



HTA 25-701
 > page 20



HTA 25-702
 > page 20



HTA 25-703
 > page 20



HTA 25-705
 > page 20



HTA 25-127
 > page 23



HTA 25-128
 > page 23



HTA 25-129
 > page 23



HTA 25-130
 > page 23



RC 2
standard



HT A 25-215

standard equipment
colour HWF-RAL9007-FME grey aluminium
wood type spruce, colour AH-LAS-100-10
half-set BA 3502

WELCOME AT HOME

Elegance redefined. This entrance door is a simple beauty.
Reduced to the essentials, with subtle details that shine in the light.
Discover true luxury in your entrance area.

standard equipment

automatic-lock with daytime function | roller hinges freely selectable | entrance door outside, in RAL-colour according to colour chart PG 1 & PG 2 | entrance door inside, pine, spruce or meranti, colour according to colour chart | internal grip outside plate with LED-handle illumination | half-set freely selectable



PREMIUM⁺



RC 2
standard



HT A 25-220

standard equipment
colour HWF-7773-FME cast iron
wood type spruce, colour AH-LAS-101-05
half-set BA 3518

TIMELESS ELEGANT

Behind the charming exterior hides the latest technology and innovative security equipment of resistance class RC 2. A modern entrance door means more protection, security and well-being.

standard equipment

*automatic-lock with daytime function | roller hinges freely selectable | entrance door outside in RAL-colour according to colour chart PG 1 and PG 2
entrance door inside, pine, spruce or meranti, colour according to colour chart | handle outside aluminium in powdercoated RAL 9005 jet black fine structure
matt with LED-handle illumination | half-set freely selectable | ⚠ Only available with illustrated handle in jet black or silver*





RC 2
standard



HT A 25-226

standard equipment
frame colour HWF-RAL9005-FMA
jet black
door leaf concrete-look
wood type spruce, colour AH-LAS-101-05
handle BA 3056
half-set BA 3518

The concrete-look is only possible on the outside.

THE AESTHETIC LIES IN THE RESTRAINT

Rough surface embossed with pores: the concrete-appearance is timeless and elegant. The combination with wood inside is an interesting mix: A unique entrance door with unmistakable appearance for discerning builders with a faible for the special.

standard equipment

automatic-lock with daytime function | roller hinges freely selectable | frame colour outside HWF-RAL9005-FMA jet black | door leaf outside concrete-look | entrance door inside, pine, spruce or meranti, colour according to colour chart | handle and half-set freely selectable

HT A 25-226 frame colour HWF-RAL9005-FMA jet black
door leaf concrete-look | handle BA 3056 | half-set BA 3518



PREMIUM

YOUR ENTRANCE DOOR, YOUR STYLE

Give your entrance a touch of character with our new design surfaces.

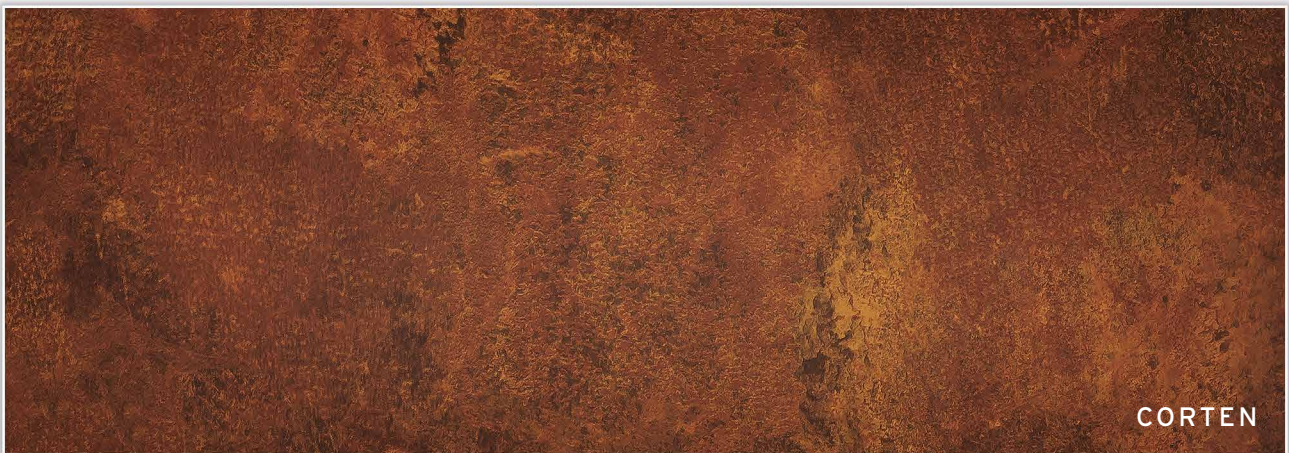
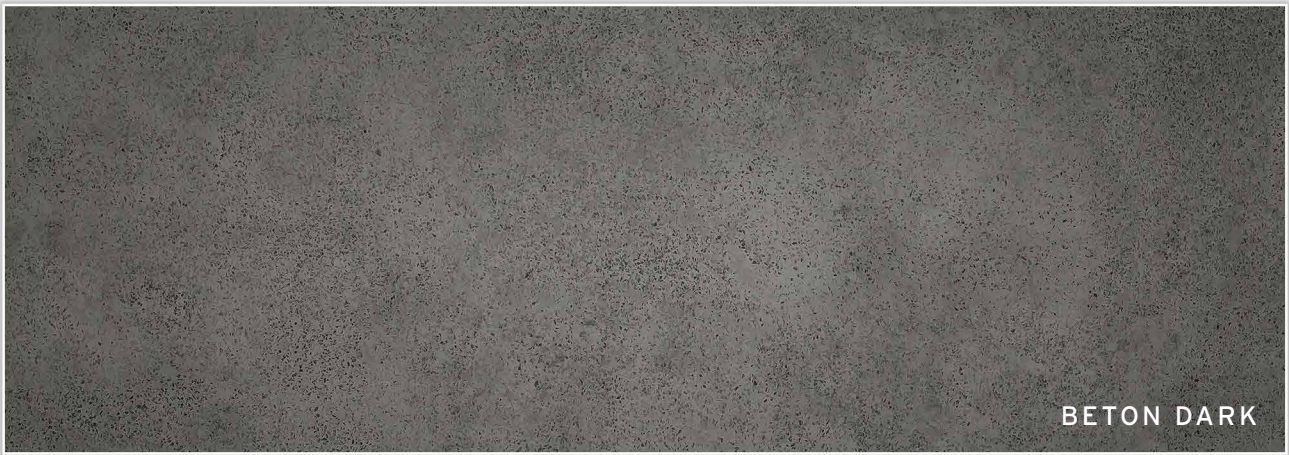
The combination of black with natural wooden decors creates an inviting cosiness, while modern rust or concrete looks give your entrance door an industrial charm.

These entrance doors can be customised with the following design surfaces:

HT A 25-201 | HT A 25-203 | HT A 25-205 | HT A 25-206 | HT A 25-207 | HT A 25-213 | HT A 25-216 | HT A 25-219

You can also choose from our standard colours (aluminium colours PG 1 and PG 2).





PREMIUM



RC 2
standard



HT A 25-201

frame colour HWF-RAL9005-FMA
jet black
door leaf surface beton dark
wood type spruce, colour AH-LAS-101-05
handle BA 3052
half-set BA 3521
jet black base plate

*Please consider the door
contains optional equipment*

standard equipment



stainless
steel
standard

automatic-lock with daytime function | roller hinges, silver | frame outside colour according to colour chart | door leaf outside colour according to colour chart or design surfaces **see page 13** | entrance door inside, pine, spruce or meranti, colour according to colour chart | handle in stainless steel freely selectable | half-set BA 3502 | base plate in stainless steel



HT A 25-207

frame colour HWF-RAL9005-FMA
jet black
door leaf surface oak-amber
wood type spruce, colour AH-LAS-101-05
glazing satinised white with clear stripes
handle BA 3057
half-set BA 3518
jet black pilaster stripes

*Please consider the door
contains optional equipment*

standard equipment



stainless
steel
standard

automatic-lock with daytime function | roller hinges, silver | frame outside colour according to colour chart | door leaf outside colour according to colour chart or design surfaces **see page 13** | entrance door inside, pine, spruce or meranti, colour according to colour chart | handle in stainless steel freely selectable | half-set BA 3502 | pilaster stripes in stainless steel

PREMIUM

EQUIPMENT ALSO AVAILABLE
IN STAINLESS STEEL



HT A 25-206

colour HWF-RAL9006-FME white aluminium
glazing satinised white | handle BA 3055
half-set BA 3518 | jet black pilaster stripes



HT A 25-216

colour HWF-RAL9006-FME white aluminium
glass partially sandblasted | handle BA 3055
half-set BA 3518



HT A 25-205

frame colour HWF-RAL9005-FMA jet black | door leaf surface
oak-concrete | partially sandblasted glass in the number field
glass and house number Iso light | handle BA 3055
half-set BA 3518 | jet black applications



HT A 25-219

frame colour HWF-RAL9005-FMA jet black
door leaf surface oak-concrete | glazing satinised
white | handle BA 3053 | half-set BA 3518
jet black applications

HT A 25-201 INSIDE VIEW
Oak cross veneer brushed light



PREMIUM

EQUIPMENT ALSO AVAILABLE
IN STAINLESS STEEL



UNIQUE
ACCENTS



HARMONIUS LOOK

A lovingly designed entrance area gives us the feeling of being welcomed with open arms and delights us anew every day.

The various exterior and interior finishes and a wide range of colour options are the perfect expression of individual taste.

HT A 25-213

frame colour HWF-RAL9005-FMA jet black
door leaf surface corten | handle aluminium
curved, powdercoated RAL 9005 jet black
fine structure matt | half-set BA 3518



HT A 25-203

colour HWF-RAL9007-FME grey aluminium
handle BA 3001 | half-set BA 3502
stainless steel pilaster stripes



HT A 25-218

colour HWF-RAL9007-FME grey aluminium
glazing satinised white | handle BA 3001
half-set BA 3502 | grooves



HT A 25-213 frame colour HWF-RAL9005-FMA jet black door leaf surface oak-amber | handle aluminium curved, powdercoated RAL 9005 jet black fine structure matt | half-set BA 3518 | glazing Iso light

BASIC⁺

ALLE MODELLE
NUR MIT ABGEBILDETEM
GRIFF MÖGLICH



HT A 25-701

colour HWF-RAL9016-FMA traffic white
glazing satinised white | handle BA 3047, 1600 mm
half-set BA 3502



HT A 25-702

colour HWF-RAL9016-FMA traffic white
glazing satinised white | handle BA 3047, 1600 mm
half-set BA 3502



HT A 25-703

colour HWF-RAL7016-FMA anthracite grey
glazing satinised white | handle BA 3047, 1600 mm
half-set BA 3502



HT A 25-705

colour HWF-RAL7016-FMA anthracite grey
glazing satinised white | handle BA 3047, 1600 mm
half-set BA 3502



BASIC⁺

ALLE MODELLE
NUR MIT ABGEBILDETEM
GRIFF MÖGLICH



HT A 25-706

colour HWF-RAL9016-FMA traffic white
glazing satinised white | handle BA 3047, 1600 mm
half-set BA 3502



HT A 25-707

colour HWF-RAL9016-FMA traffic white
handle BA 3047, 1600 mm
half-set BA 3502



HT A 25-709

colour HWF-RAL7016-FMA anthracite grey
handle BA 3047, 1600 mm
half-set BA 3502 | stainless steel pilaster stripes



HT A 25-710

colour HWF-RAL7016-FMA anthracite grey
glazing satinised white | handle BA 3047, 1600 mm
half-set BA 3502

BASIC

ALLE MODELLE
NUR MIT ABGEBILDETEM
GRIFF MÖGLICH



HT A 25-127

colour HWF-RAL9016-FMA traffic white
glazing satinised white | handle BA 3066, 1000 mm
half-set BA 3502



HT A 25-128

colour HWF-RAL9016-FMA traffic white
glazing satinised white | handle BA 3066, 1000 mm
half-set BA 3502



HT A 25-129

colour HWF-RAL7016-FMA anthracite grey
glazing satinised white | handle BA 3066, 1000 mm
half-set BA 3502



HT A 25-130

colour HWF-RAL7016-FMA anthracite grey
glazing satinised white | handle BA 3066, 1000 mm
half-set BA 3502

ALUMINIUM COLOURS PG 1



HWF-RAL9016-FMA
traffic white



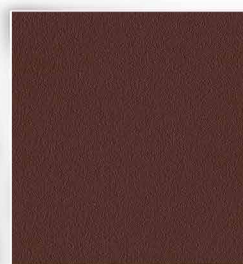
HWF-RAL7040-FMA
window grey



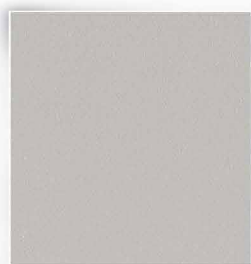
HWF-RAL7037-FMA
dusty grey



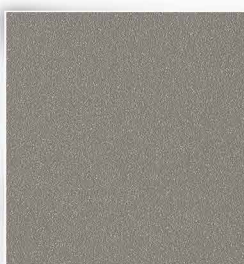
HWF-RAL7016-FMA
anthracite grey



HWF-RAL8017-FMA
chocolate brown



HWF-RAL9006-FME
white aluminium



HWF-RAL9007-FME
grey aluminium



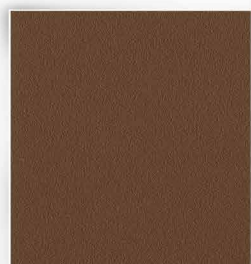
HWF-7774-FME
volcanic ash



HWF-DB703-FME
DB 703



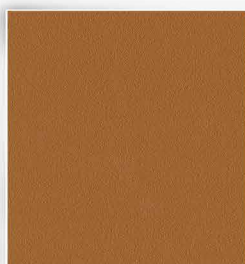
HWF-7773-FME
cast iron



HWF-RAL8014-FMA
sepia brown



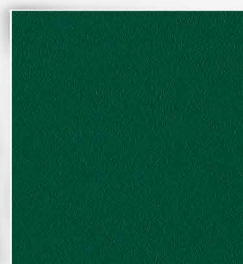
HWF-RAL8011-FMA
nut brown



HWF-RAL8003-FMA
clay brown



HWF-RAL3004-FMA
purple red



HWF-RAL6005-FMA
moss green



HWF-RAL9005-FMA
jet black



HWF-6669-GMA
alu nature



HWF-6668-GMA
alu middle bronze



HWF-6667-GMA
alu dark bronze

ALUMINIUM SPECIAL COLOURS

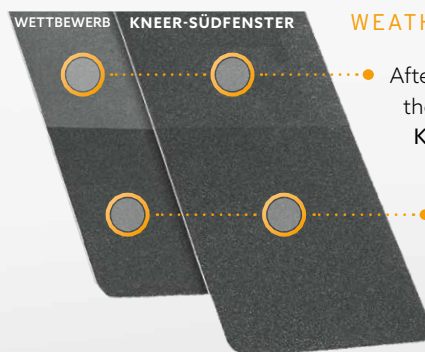
1 PG 2 | see category Also available

RAL colour at choice smooth-matt

2 PG 3 - 5 | see category Also available

RAL colour at choice smooth-glossy, fine structure and highly weather resistant (HWF) as far as possible

NOTE The following colours are not available: NCS-, DB- and RAL design colour card, wood decors, pearl effect

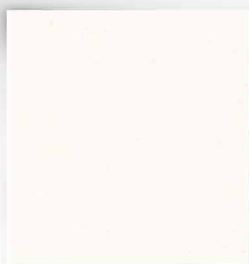


WEATHER TEST

After 10 YEARS of weathering, the HWF-coating of KNEER-SÜDFENSTER is much less faded

Powder coating in new condition

WOOD TYPES & COLOURS



PINE | SPRUCE
OAK
AH-DMA-150-05



SPRUCE
AH-LAS-101-05



PINE | SPRUCE
OAK
AH-LAS-100-10



PINE | SPRUCE
AH-LAS-102-05



PINE | SPRUCE
AH-LAS-100-09



PINE | SPRUCE
LARCH | OAK
AH-LAS-103-13



PINE
AH-LAS-107-53



PINE | SPRUCE
LARCH | OAK
AH-LAS-105-01



PINE | SPRUCE
EICHE
AH-OEL-202-54



PINE | SPRUCE
LARCH | OAK
SIK CN.01.55*
(replacement for glaze LAS-44-14)



PINE | SPRUCE
LARCH | OAK
LAS-16-09



PINE | SPRUCE
LARCH | OAK
LAS-19-03



PINE | SPRUCE
LARCH | OAK
LAS-18-02



PINE | SPRUCE
LARCH | OAK
LAS-40-02

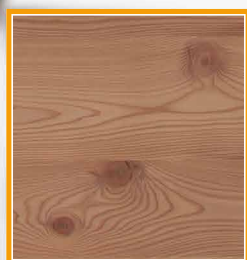


PINE | SPRUCE
LARCH | OAK
LAS-31-01

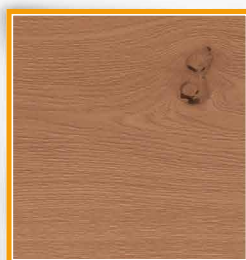
NEW



PINE | SPRUCE
LARCH | OAK
OEL-27-10



LARCH CROSS VENEERED
brushed light



OAK CROSS VENEERED
brushed light

NOTE

Cross veneer wood surfaces are only possible with **PREMIUM** and **PREMIUM+** entrance doors

CROSS VENEER WOOD SURFACES

Additionally you can get the wood types oak and larch. The cross veneers are executed brushed and get a bright colour. The colour differences and rough branches are deliberately emphasized. The veneer of larch is much more knotty and lively as that of the oak. The expression of the individual veneers can nevertheless vary. For the door frame these two colors are not available, as a combination we recommend an opaque color such as RAL 9005 jet black to match the **black equipment** section.

GLAZING

To make your new front door even more individual, we offer special glasses for you to choose from. In addition to Iso light, we also offer various ornamental glass types. Or would you prefer satinised white with a clear edge? Very elegant!



SATINISED WHITE*



CHINCHILLA WHITE*



MASTERCARRE WHITE*



BAROCK WHITE



SILVIT WHITE



GOTHIK WHITE



MADRAS PAVE WHITE



MADRAS UADI WHITE



SATINISED WHITE WITH CLEAR EDGE



MIRROR ON THE INSIDE

All doors without glass cutout are perfectly suitable for designing with a large mirror (approx. 30 cm wide). This is a decorative as well as practical design and changes the design in the entrance area.

The following doors are available with mirror:

HT A 25-201 | HT A 25-203 | HT A 25-213 | HT A 25-215
HT A 25-220 | HT A 25-226 | HT A 25-707 | HT A 25-709

STAINLESS STEEL EQUIPMENT



**HANDLE BAR
HALF-ROUND**

material: stainless steel
1480 mm – BA 3030
1280 mm – BA 3011
1040 mm – BA 3004



**HANDLE BAR
ROUND**

material: stainless steel
1480 mm – BA 3001
1200 mm – BA 3003
500 mm – BA 3010



**KNOB:
BA 3006**

material:
stainless steel

NOTE

For **PREMIUM** entrance doors you can choose between these handle bars

HALF-SETS

PREMIUM, **BASIC⁺** and **BASIC** front doors are standardly equipped with stainless steel fittings and interior handle BA 3502. On request, a handle can be selected on the outside instead of the handle bar. The outside lever handle is identical with the inside lever handle (without surcharge). You will receive 5 keys in the standard.



HALF-SET: BA 3502

handle shape: round
inside: attached escutcheon
outside: attached protection escutcheon
material: stainless steel



HALF-SET: BA 3525

handle shape: half-round
inside: attached escutcheon
outside: attached protection escutcheon
material: stainless steel



HALF-SET: BA 3522

handle shape: round
inside: attached escutcheon
outside: plano protection escutcheon
material: stainless steel



HALF-SET: BA 3506

handle shape: angular
inside: attached escutcheon
outside: attached protection escutcheon
material: stainless steel



HALF-SET: BA 3529

handle shape: half-round
inside: attached escutcheon
outside: attached protection escutcheon
material: stainless steel



HALF-SET: BA 3523

handle shape: angular
inside: attached escutcheon
outside: plano protection escutcheon
material: stainless steel

your possibilities

BLACK EQUIPMENT

Black MAGIC

Fully on trend:

Accessories in an elegant very intense black. Mysterious, traditional and fascinating.

Magical forces captivate your visitors and convey an enchanting, sparkling atmosphere of well-being.

Surprise family, friends and acquaintances with a high quality entrance door made especially for you, including the most state-of-the-art technology.

Made with decades of experience.



NOTE

For PREMIUM entrance doors you can choose between these handle bars



HANDLE BAR HALF-ROUND

1480 mm - BA 3052

1280 mm - BA 3053

1040 mm - BA 3054

HANDLE BAR ROUND

1480 mm - BA 3055

1200 mm - BA 3056

500 mm - BA 3057



BASE PLATE

1 per entrance door



ROLLER HINGES

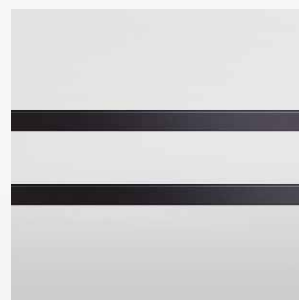
3 per entrance door



FINGERPRINT



APPLICATIONS



PILASTER STRIPES



HALF-SET: BA 3518

handle shape: round
inside: attached escutcheon
outside: attached protection escutcheon



HALF-SET: BA 3526

handle shape: half-round
inside: attached escutcheon
outside: attached protection escutcheon



HALF-SET: BA 3519

handle shape: round
inside: attached escutcheon
outside: plano protection escutcheon



HALF-SET: BA 3521

handle shape: angular
inside: attached escutcheon
outside: attached protection escutcheon



HALF-SET: BA 3530

handle shape: half-round
inside: attached escutcheon
outside: attached protection escutcheon



HALF-SET: BA 3520

handle shape: angular
inside: attached escutcheon
outside: plano protection escutcheon

SPECIAL EQUIPMENT

ACCESS OPTIONS

All entrance doors are equipped as standard with an automatic lock (without E-opener).

By pulling the door, the latch bolts at the top and bottom of the door automatically move 20 mm into the bolting bar. As a result, the door is always locked - without locking with the key. A day trap (also called snapper or latch) is also integrated in the lock, however, the automatic locking must be deactivated for use.

1 E-OPENER

Electric door opener - for using, the automatic lock has to be deactivated manually. The E-opener is integrated in the face plate.

- ✓ Easy opening of the entrance door by actuation of e.g. the domestic intercom system
- ✓ No need to walk to the door

2 AUTOMATIC LOCK WITH M-OPENER

Door opener with motor-driven release - By pulling the door closed the multipoint lock will be activated without locking it. Releasing is done by pressing the handle or for instance by a domestic intercom system. Electrical opening options such as fingerprint or domestic intercom system are overridden by manual relocking.

- ✓ Maximum security without locking
- ✓ The automatic and the motorised locking complement each other
- ✓ Ideal for access system in single and multi-family houses

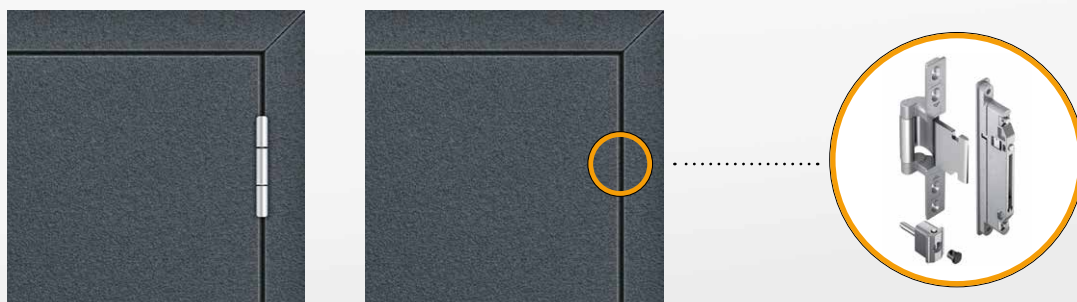
3 FULL MOTORIZED LOCK

Opening and closing is motorized - as if by magic. As soon as the door falls into the lock, the lock independently closed, without any manual closing. The opening of the entrance door is comfortably motorized via door opener the intercom system or via access systems.

- ✓ Maximum comfort and security
- ✓ Increased tightness
- ✓ Panic function as standard, opening the door from inside is always guaranteed

FULLY CONCEALED HINGES

You have the possibility to upgrade all front doors with concealed hinges.



FINGERPRINT

KEYLESS ACCESS

Smart access with fingerprint because intelligent building utilisation begins directly at your new entrance door.

While keys, codes or cards can be forgotten, lost or stolen your finger is always with you.

But a fingerprint is even more - it gives the entrance door with new features a smart upgrade!

This creates more comfort and safety in everyday life and for the whole family.



YOUR FINGER
AS A KEY



HIGHEST
SECURITY



PUSH-
NOTIFICATIONS



PERSONALISED
TIME FRAMES



SMART REMOTE
OPENING



1

FINGERPRINT „STAINLESS STEEL“ FOR THE DOOR LEAF

FINGERPRINT „BLACK“ FOR THE DOOR LEAF

- ✓ 4-segmental luminous ring for visual signalling
- ✓ with provider-app for smart functions
- ✓ single-user management included as standard
- ✓ access system is managed via smartphone or tablet
- ✓ connection with Alexa/Google/Apple



2

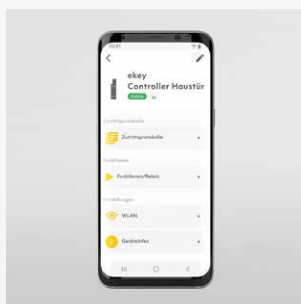
FINGERPRINT "STAINLESS STEEL" WITH HANDLE BAR

FINGERPRINT "BLACK" WITH HANDLE BAR

- ✓ 4-segmental luminous ring for visual signalling
- ✓ with provider-app for smart functions
- ✓ single-user management included as standard
- ✓ access system is managed via smartphone or tablet

"stainless steel" half-round: 1280 mm – BA 3076 or 1480 mm – BA 3077

"black" half-round: 1280 mm – BA 3078 or 1480 mm – BA 3079



MANAGE FINGERPRINT-SYSTEM WITH THE PROVIDER-APP

The app as a management centre, where you can assign roles and authorisations for family, friends or service providers, among other things.

Push notifications let users know that their loved ones have arrived home safely.

The front door can also be opened remotely. The connection to the Amazon Alexa voice assistant provides additional convenience at the front door - your practical everyday helper!

SYSTEM REQUIREMENTS

The fingerprint can only be integrated with a **functioning WLAN** and the corresponding ekey binoyx app. The app can be downloaded via the Play Store or App Store. A smartphone or tablet with the following requirements is necessary for installation and commissioning:
Android 9 or higher, iPhone or iPad requires iOS 14.0 or higher.



SAFETY TECHNOLOGY

SECURITY AND SAFETY FOR YOUR HOME

Your new entrance door should be inviting for visitors and deterrent for burglars.

First and foremost, it must guarantee safety because burglars choose this way more and more often.

Even with the basic equipment we therefore attach great importance to the solid safety mechanism.





SAFETY COMPONENTS

STANDARD EQUIPMENT

- 1 Lock tested corresponding to security class RC 2:
When closing the door the latch bolts drive 20 mm into the bolting bar via a magnetic impuls at the top and bottom of the door. Therefore the door is always closed - without re-closing with a key.
- 2 The main bolt can be locked with a key turn - the lever blocks for control purposes, as a child safety lock and for maximum security.
- 3 Continuous bolting bar:
protection against prying on the lock side
- 4 Cylinder with drill protection
- 5 Interior handle in stainless steel with exterior cylinder cover: serves as a pull protection for the cylinder
- 6 Stable roller conveyor: triple security on the hinge side
- 7 Strong and massiv aluminium panel:
meets RC 2 requirements

AUF WUNSCH DAS PLUS AN SICHERHEIT

- 8 P4A safety glazing: One pane consists of a composite of two panes with integrated security foil. Furthermore, the glazing is glued circumferential with a special adhesive in the glass cut-out. Thus, the glass connection is secured. | Safety execution RC 2 **against surcharge**

The status **RC 2 TESTED** achieve the following front doors

- ✓ Without glass cut-out through standard equipment:
HT A 25-201 | HT A 25-203 | HT A 25-213 | HT A 25-215 | HT A 25-220 | HT A 25-226 | HT A 25-707 | HT A 25-709
- ✓ Through the use of an additional P4A protective glazing:
HT A 25-205 | HT A 25-206 | HT A 25-207 | HT A 25-216 | HT A 25-218 | HT A 25-219
HT A 25-701 | HT A 25-702 | HT A 25-703 | HT A 25-705 | HT A 25-706 | HT A 25-710

TECHNICAL DATA

MATERIAL	aluminium-wood
SYSTEM	AHT 1-95 / 3-95 with Classic- or Art-shell
GASKETS	3 pieces
GLAZING	triple glazing, with warm edge
WOOD SPECIES	pine or spruce
WOOD SURFACE	4-layer colour application, colours according to Kneer-Südfenster colour chart
ALUMINIUM SURFACE	aluminium shell powdercoated highly weather resistant door with panel in the standard colours according to aluminium colour chart (wood decors are not possible) special colours according to RAL are possible fine structur and highly weather resistant if possible
LOCK	automatic-lock as multipoint locking with daytime function, without E-opener
CYLINDER	profile cylinder with emergency and danger function, drill protection and 5 keys
HINGES	3 pieces of 3-piece bands in silver colour
MAX. SIZE	1150 x 2250 mm frame outer dimension
MIN. SIZE	from 700 x from 1811 mm frame outer dimension (depending on model)

U_D-VALUE AHT 3-95 *

MODEL	CATEGORY	U _D -VALUE PINE	U _D -VALUE SPRUCE
HT A 25-215	PREMIUM⁺	0,75 W/m ² K	0,71 W/m ² K
HT A 25-220	PREMIUM⁺	0,75 W/m ² K	0,71 W/m ² K
HT A 25-226	PREMIUM⁺	0,75 W/m ² K	0,71 W/m ² K
HT A 25-201	PREMIUM	0,75 W/m ² K	0,71 W/m ² K
HT A 25-203	PREMIUM	0,75 W/m ² K	0,71 W/m ² K
HT A 25-205	PREMIUM	0,84 W/m ² K	0,79 W/m ² K
HT A 25-206	PREMIUM	0,84 W/m ² K	0,79 W/m ² K
HT A 25-207	PREMIUM	0,82 W/m ² K	0,78 W/m ² K
HT A 25-213	PREMIUM	0,75 W/m ² K	0,71 W/m ² K
HT A 25-216	PREMIUM	0,86 W/m ² K	0,81 W/m ² K
HT A 25-218	PREMIUM	0,84 W/m ² K	0,79 W/m ² K
HT A 25-219	PREMIUM	0,81 W/m ² K	0,77 W/m ² K
HT A 25-701	BASIC⁺	0,84 W/m ² K	0,79 W/m ² K
HT A 25-702	BASIC⁺	0,88 W/m ² K	0,84 W/m ² K

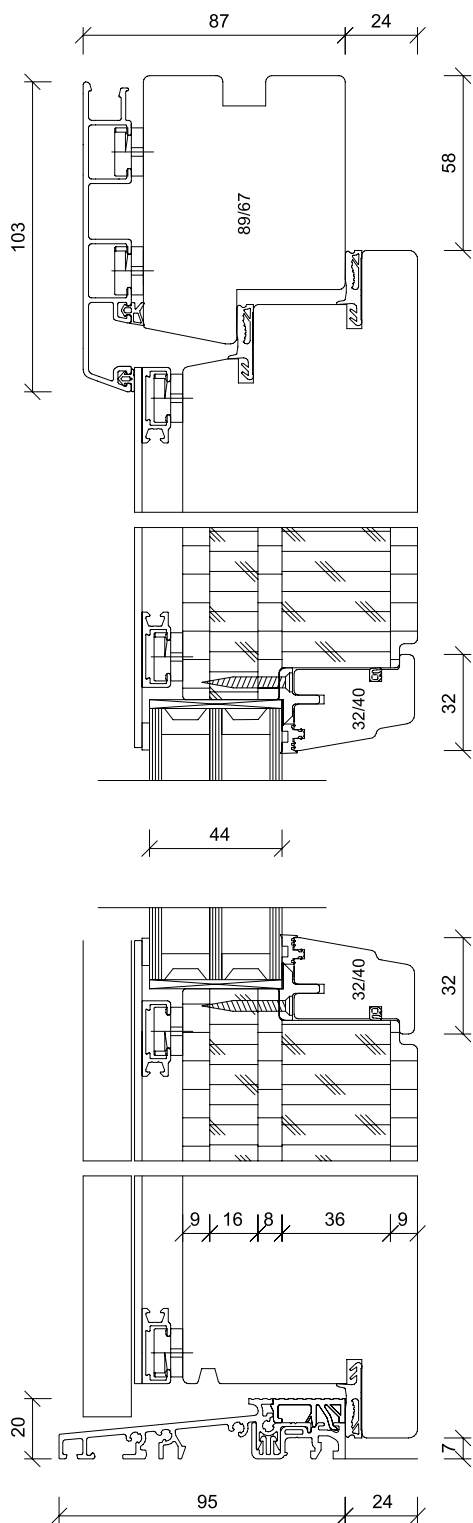
U_D-VALUE AHT 3-95 *

MODEL	CATEGORY	U _D -VALUE PINE	U _D -VALUE SPRUCE
HT A 25-703	BASIC⁺	0,85 W/m ² K	0,81 W/m ² K
HT A 25-705	BASIC⁺	0,83 W/m ² K	0,79 W/m ² K
HT A 25-706	BASIC⁺	0,83 W/m ² K	0,79 W/m ² K
HT A 25-707	BASIC⁺	0,75 W/m ² K	0,71 W/m ² K
HT A 25-709	BASIC⁺	0,75 W/m ² K	0,71 W/m ² K
HT A 25-710	BASIC⁺	0,86 W/m ² K	0,82 W/m ² K

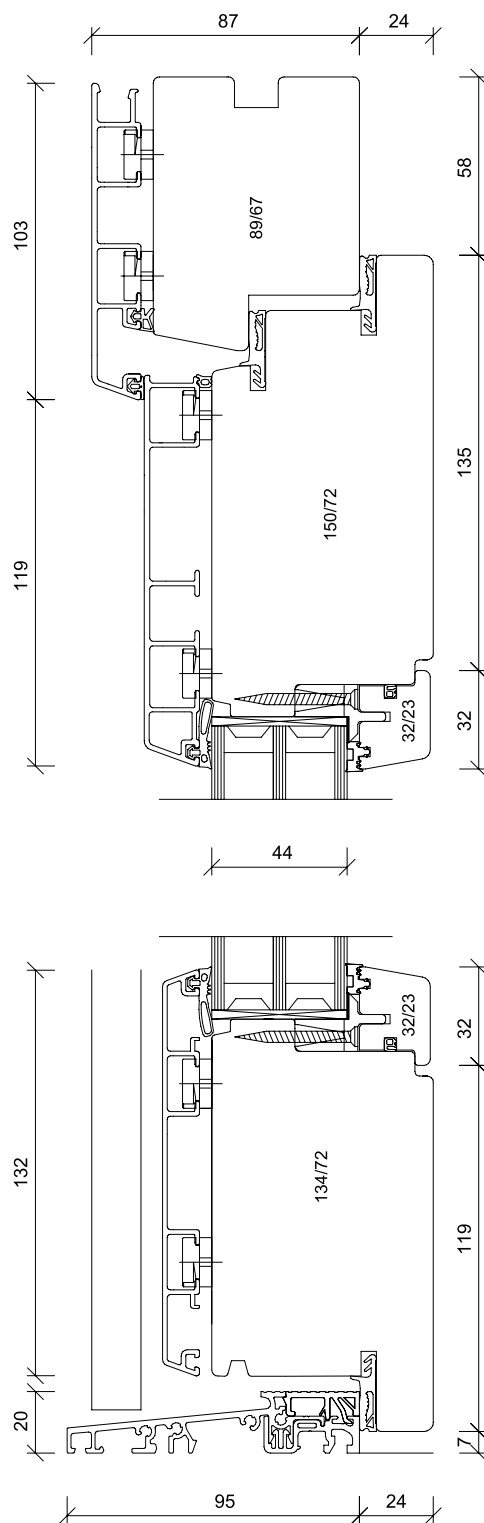
U_D-VALUE AHT 1-95 *

MODEL	CATEGORY	U _D -VALUE PINE	U _D -VALUE SPRUCE
HT A 25-127	BASIC	0,97 W/m ² K	0,92 W/m ² K
HT A 25-128	BASIC	1,0 W/m ² K	0,97 W/m ² K
HT A 25-129	BASIC	1,1 W/m ² K	1,0 W/m ² K
HT A 25-130	BASIC	1,1 W/m ² K	1,0 W/m ² K

AHT 3-95



AHT 1-95



TECHNICAL DATA

MATERIAL	aluminium-wood
SYSTEM	AHT 3-105 Modern (system cannot be selected at BASIC and BASIC+)
GASKETS	3 pieces
GLAZING	triple glazing, with warm edge
WOOD SPECIES	pine or spruce
WOOD SURFACE	4-layer colour application, colours according to Kneer-Südfenster colour chart
ALUMINIUM SURFACE	aluminium shell powdercoated highly weather resistant door with panel in the standard colours according to aluminium colour chart (wood decors are not possible) special colours according to RAL are possible fine structur and highly weather resistant if possible
LOCK	automatic-lock as multipoint locking with daytime function, without E-opener
CYLINDER	profile cylinder with emergency and danger function, drill protection and 5 keys
HINGES	3 fully concealed hinges
MAX. SIZE	1150 x 2250 mm frame outer dimension
MIN. SIZE	from 700 x from 1831 mm frame outer dimension (depending on model)

U_D-VALUE AHT 3-105 MODERN *

MODEL	CATEGORY	U _D -VALUE PINE	U _D -VALUE SPRUCE
HT A 25-215	PREMIUM+	0,78 W/m²K	0,73 W/m²K
HT A 25-220	PREMIUM+	0,78 W/m²K	0,73 W/m²K
HT A 25-226	PREMIUM+	0,78 W/m²K	0,73 W/m²K
HT A 25-201	PREMIUM	0,78 W/m²K	0,73 W/m²K
HT A 25-203	PREMIUM	0,78 W/m²K	0,73 W/m²K
HT A 25-205	PREMIUM	0,85 W/m²K	0,80 W/m²K
HT A 25-206	PREMIUM	0,85 W/m²K	0,80 W/m²K
HT A 25-207	PREMIUM	0,84 W/m²K	0,80 W/m²K
HT A 25-213	PREMIUM	0,78 W/m²K	0,73 W/m²K
HT A 25-216	PREMIUM	0,86 W/m²K	0,81 W/m²K
HT A 25-218	PREMIUM	0,85 W/m²K	0,81 W/m²K
HT A 25-219	PREMIUM	0,83 W/m²K	0,79 W/m²K

* Calculation basis U_D-value according to DIN EN ISO 10077-1 (door size 1230 x 2180 mm)

The technical drawing illustrates the AHT 3-105 Modern window profile through three detailed cross-sectional views.

- Top Section:** Shows the main profile structure with a total height of 1035 mm and a width of 104 mm. It includes labels for components like F BR 103.16 and FL 51.14, and specifies a glass thickness of 89/84 mm.
- Middle Section:** Provides a detailed view of the frame assembly, highlighting a depth of 48 mm and a specific component dimension of 32/46 mm. A 32 mm gap or offset is also indicated.
- Bottom Section:** Offers another perspective of the profile details, showing a base width of 70 mm and a depth of 41.5 mm. Various small offsets and clearances are specified as 20 mm, 9 mm, 36 mm, 68 mm, and 9 mm.

ALSO AVAILABLE

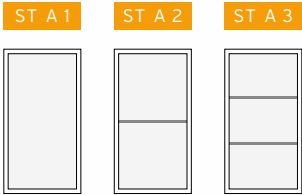
SIDE LIGHTS

ST A 1, ST A 2 and ST A 3 possible (max. width 910 mm)

GLAZING

VSG 6 mm

glass sand-blasted with clear edge or clear stripes
for entrance door or side light



SYSTEM

Entrance door system AHT 3-115

ineligible by Basic +

Entrance door system AHT 3-105 Modern

ineligible by Basic +

Side light AHT 3-115/AHT 3-105 Modern

ineligible by Basic +

ACCESS OPTIONS

Electric opener

Automatic lock as multipoint locking with M-Opener

Full motorized lock without adaptor

Types of wood: pine, spruce, meranti, larch, oak

SECURITY / MISCELLANEOUS

Safety execution RC 2 for entrance door

Mirror on the inside of the entrance door

COLOURS

pg 1-2

included in the basic price

pg 3-5

NOTE

There might be slight deviations in colour due to printing process.

KNEER · SÜD **FENSTER**

Lived Vision



KNEER GmbH Fenster und Türen

Horst-Kneer-Straße 1
D-72589 Westerheim
phone: +49 (0) 7333 / 83-0
e-Mail: info@kneer.de

SÜD-FENSTERWERK GmbH & Co. Betriebs-KG

Rothenburger Straße 39
D-91625 Schnelldorf
phone: +49 (0) 7950 / 81-0
e-Mail: info@suedfenster.de

SÜD-BAUELEMENTE GmbH

Ludwig-Erhard-Straße 4
D-03238 Massen
phone: +49 (0) 3531 / 799-114
e-Mail: info@suedfenster.de



WWW.KNEER-SUEDFENSTER.DE

Your KNEER-SÜDFENSTER specialized dealer: