

• Afternoon Tea •





• Afternoon Tea •



Our wondrous afternoon tea is inspired by our leafy surroundings. This time honoured tradition is best paired with a cup of tea, and we are delighted to offer ours in association with Whittard of Chelsea.

Vegetarian and children's afternoon teas are also available to pre-order

• Botanical Afternoon Tea • Scones

Two homemade classic and two golden raisins, strawberry preserves, clotted cream v

Sandwiches

Egg & chive v

Cream cheese & cucumber v

Severn & Wye smoked salmon, dill cream cheese

Salt beef & onion chutney tacos

Coronation chicken

Pâtisserie

Black cherry pepper dome v

Chocolate orange tartlets v

Poppy beetroot loaf v

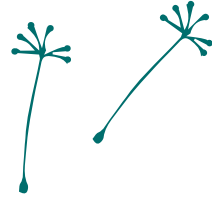
Lemon & coconut pyramid v

Heritage carrot cake v



• 42pp / 80 for two •





• Savoury Afternoon Tea •

Scones

Caramelised onions & Rosemary
black garlic houmous v

Sandwiches

Egg & chive v
Cream cheese & cucumber v
Severn & Wye smoked salmon, dill cream cheese
Salt beef & onion chutney tacos
Coronation chicken

Savoury Bites

Maple roasted cocktail sausages
Confit duck spring roll
Cauliflower bites v
Hake croquettes

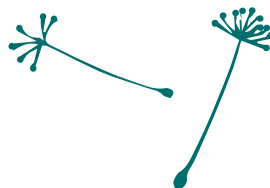
• 42pp / 80 for two •



• Cream Tea •

Homemade scones served with strawberry
preserve, and clotted cream (v)

• 14pp •



• Pick Your Perfect Tea •



• 144 On The Hill Blend Black Tea • Black Tea

Our signature tea is an elegant blend of black and jasmine scented green tea, with beautifully balanced flavours of bergamot and a flamboyant flourish of pink and white petals. The rich tea blends beautifully with the refreshing floral taste of the green, while the hint of bergamot creates the lightest suggestion of an Earl Grey.

• Earl Grey • Black Tea

Renowned for its wonderful bergamot aroma, Earl Grey tea has become firmly ensconced as an afternoon tea classic. Our take on the quintessential British blend of fine Chinese and Ceylon black tea is perfectly balanced with flavours of citrusy bergamot – we've even added a scattering of blue cornflower petals for an elegant final flourish.





• 1886 Blend •
Black Tea



This historical loose-leaf blend is inspired by the type of tea enjoyed in Victorian times when Walter Whittard opened his first shop in 1886. Created using the Victorian time techniques, this tea is a hearty, full-bodied and flavoursome brew with a real taste of authenticity.

• Richmond Gardens •
White Tea

This rosebud-scattered loose-leaf white tea is Richmond's lush flora in a cup. With loose leaf White Peony tea as a base, Richmond Gardens is a light and elegant brew, while the sweet suggestion of rose and flavours of ripe summer fruits add a delightfully characteristic twist.

• Mango & Bergamot •
Green Tea Blend

Delicately blended with exotic flavours of mango, lulo and bergamot, this blend is a sweetly sophisticated loose-leaf green tea. High-quality green tea leaves form the base of the blend, picked in early spring for their verdant colour and herby taste. Scattered with rose, sunflower and blue cornflower petals, this blend is as beautiful as it is delicious – perfect for adding a twist of Richmond exoticism to an afternoon spread.

• Golden Camomile •
Herbal Blend

Classically comforting and naturally sweet, a loose golden herbal infusion with a fragrant floral finish. Crafted purely from whole golden camomile flowers. With its sundrenched warmth, we'd call it a cup of pure relaxation.

• Coffee •

Espresso | Caffè Latte | Cappuccino
Americano | Flat White



• Children's Afternoon Tea •



Let the kids enjoy their very own three-tiered afternoon tea full of delicious sweet treats and savoury bites. Served from Midday - 5pm

Two & three course children's menu also available
- just ask your server!

Finger sandwiches

Ham & cheese
Cream cheese & cucumber (v)

Vegetable dippers

Carrot, cucumber and sweet pepper
sticks, houmous dip (v)

Sweet treats

Donut delight lollipop
Chocolate eclairs
Vanilla superberry cheesecake
Candy floss

• 14pp / 22 for two •

• Drinks •

Vegan & natural juices

Natural ingredients, vegan, gluten free
Mango
Peach
Multivitamin Tropical
Strawberry



• ALL 4 •

