

Madison Bead Society

PO Box1563, Madison, WI 53701-1563 | info@madisonbeadsociety.org | www.madisonbeadsociety.org

President Letter – May 2020

COVID-19, coronavirus, stay at home – I’m getting tired of hearing about it, yet I can’t stop turning on the news to hear the latest updates. I’m limiting my exposure to the news and turning to things I have more control over. No, not the cats, don’t be silly. My she-cave! It’s my telecommuting office, TV room, craft room, reading nook, and yoga studio (you got me, once in a while I do my PT stretches/exercises in there but not yoga). After telecommuting for 5 weeks, I needed a break. There’s no bus ride to transition from work to home and I was starting to burn out. I took a week off – Craft-Cation! – and spent most of it going through the piles and organizing. I know my house needs a good Spring cleaning, but now I have a peaceful space I can retreat to when I need a break from cleaning, once I start cleaning.

I hope you all have found a similar release for pent-up energy. To give you something to look forward to, here’s information on two rescheduled beading events:

Art Glass and Bead Show’s 15th Anniversary – November 21-22

Chris Mode consulted her vendors and determined rescheduling for November was preferable to cancelling the 2020 show. Thank you Chris! We all appreciate the hard work you put into AGBS every year, not just this year. We’re excited about the rescheduled date as it falls on the same weekend as the Women’s Expo, a Holiday Bazaar, and the Gem and Mineral Show. It’s also the weekend before Thanksgiving. Go to <http://www.beadshowmadison.com/index.html> for more information.

MBS will have a table in the vendor hall, Sat. 10 to 5 and Sun. 10 to 4. Thanks to the volunteers for the March show. We’ll ask for volunteers again, a 3-4 hour shift, in the Fall. There will be information about MBS at the table in addition to brochures. We will sell grab bags again (\$3 per bag), and volunteers are permitted to sell their finished pieces or lampwork beads while staffing the table. Please take for-sale items with you at the end of your shift.

University of Wisconsin Hospital Display – July 2020

We were able to reschedule the UW Hospital display from May to July this year, returning to May in the future. All of this is contingent on the Stay at Home order lifting and if the CDC guidelines allow this type of travel. Wally will know more when she talks to her contact in June.

This is the 14th time we have displayed there. It is a chance for the society to reach out to potential new members and gives us an opportunity to sell. Display items are sold through the Hospital’s gift shop (20% of sales are donated to the Hospital’s art fund).

Wally has coordinated the display for several years. She’ll need pieces the week of June 22nd (after Father’s Day). You can drop off pieces at the June 23rd meeting (location to be determined), or at Meant to Bead between June 22-26. So far, 5 members have committed to submit pieces. To have a good display, we’ll need between 75 and 100 pieces. If you weren’t ready in April but can have pieces for the July display, *please email me* (president@madisonbeadsociety.org), and tell me how many pieces you can provide, limit of 12.

Each item needs to be accompanied by a card (which I will mail to you), giving the artist’s name, title or name of the piece, technique used, and the price (tax not included). If you do not

want to sell a piece, write NFS in the price line. We need a value for all pieces, even those not for sale, for insurance purposes. Each item, plus card, needs to be in its own small plastic bag, and the small plastic bags need to be in a larger plastic bag. This permits the exhibitor to pick and choose items for the display.

Drop off day is to be determined, but it will be at Meant to Bead (<https://www.meanttobead.com/>). We certainly hope the shop will be open again by mid-June. Meanwhile, if you need something to complete a project, Shannon can offer curbside pickup. Details are on the store's website.

Pieces will be returned at the August meeting or by other arrangement.

August 25th meeting: Bead Loom

I hope you were looking forward to the bead loom workshop like I was. It is now tentatively scheduled for August, with October as a back-up date should the situation change.

Location: [to be determined] Meeting is from 6:30 to 8:30, Board meeting at 6:00, any member may attend.

Presenter: Mary Jo Schiavoni

Supplies: bead loom, beading thread (Nymo will work), size 10 beading needle, 3 colors of seed beads either size 8 or size 10 [Editor's Note: if you haven't done bead looming before, use size 8 beads; if you have some experience with a bead loom, you can mix sizes]

Mary Jo will go over the basics of bead looming. Don't buy one just for the meeting, there will be a couple extra ones at the meeting. Try it out and see if you like it before buying a bead loom. Mary Jo also supplied me with a pattern (last page), so we're all on the same page. [I apologize for the smudged flower in the top pattern.]

Each pattern is the same width, 6 strings. Use black or white thread or a color to match what you choose to be the background color.

Closing thoughts

I will contact libraries about reserving a meeting room for June and July soon. I'm not sure anyone is there, but I know they can offer curbside pickup now. Stay tuned.

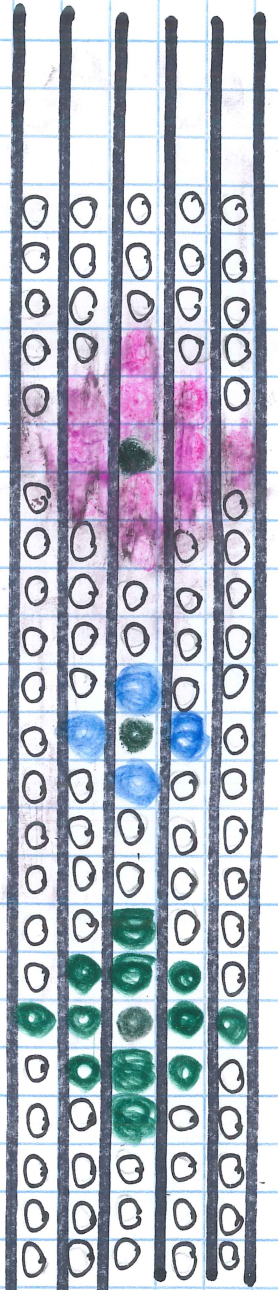
Okay, I definitely scratched that "organizing my craft room" itch. Time to do some serious beading!

2020 Meetings: June 23, July 28, August 25, September 22, October 27, November 24 (that's Thanksgiving week)

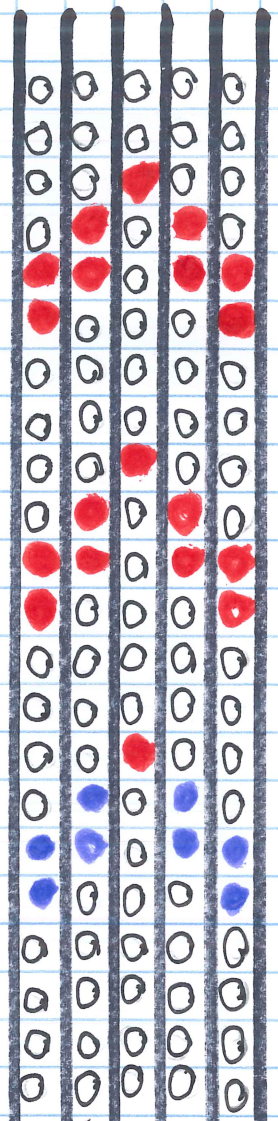
Thanks for reading and bead on!

Pat Reichert president@madisonbeadsociety.org

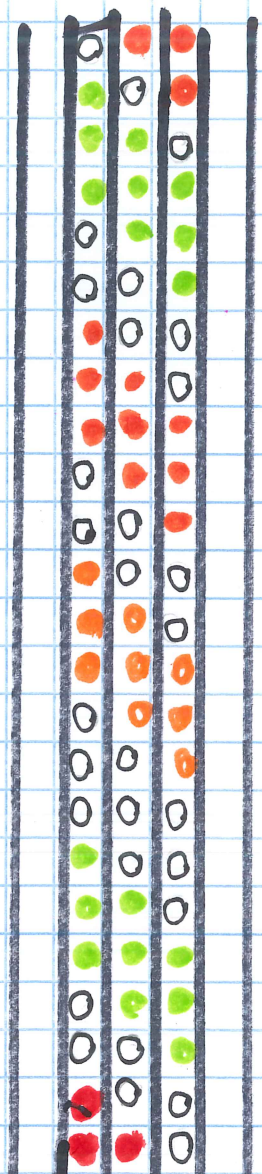
Pearl Zippers (Pick One)



(1)



(2)



(3)

O = BACK GROUND BEADS (Black or White is nice)

} PATTERN BEADS